

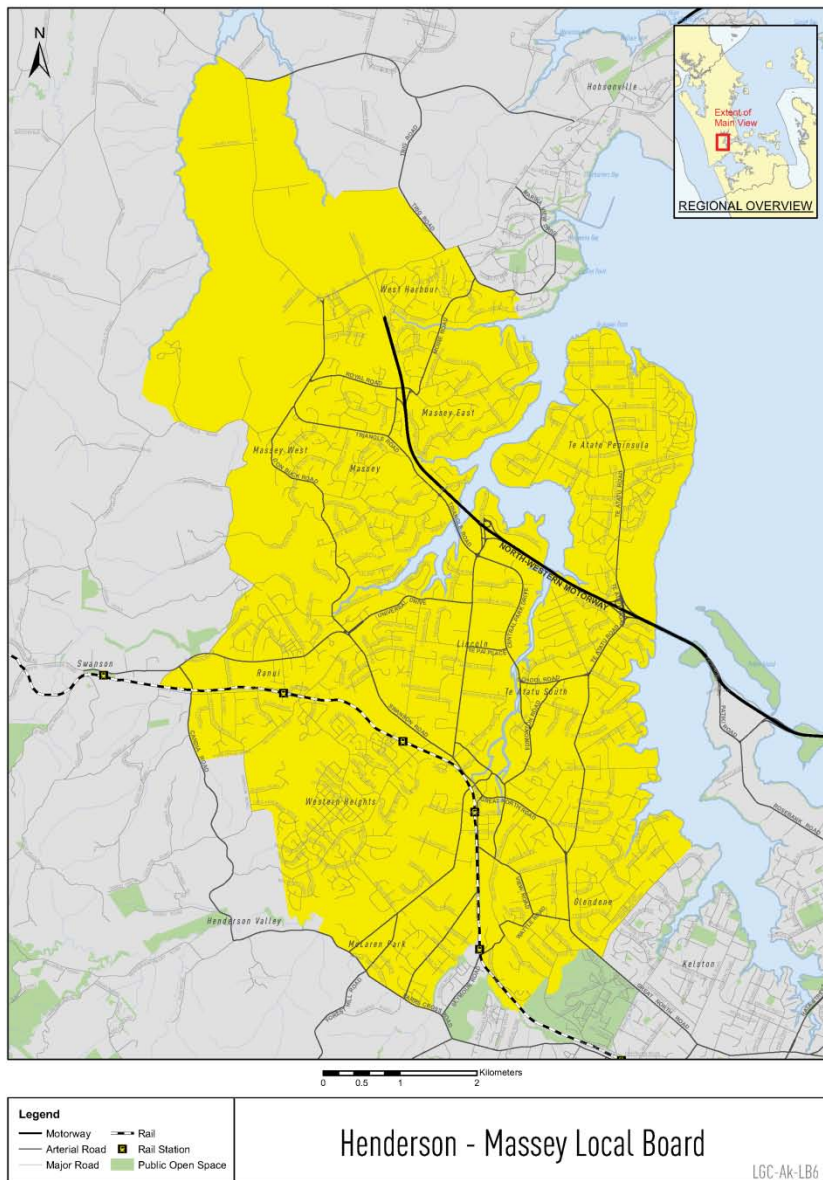
## **Henderson-Massey Local Board Profile**

### **- Initial results from the 2013 Census**

February 2014

Social and Economic Research Team  
Research, Investigations and Monitoring Unit  
Auckland Council

## Map of Henderson-Massey local board area



This report is part of a broader series of 2013 Census reports being developed by the Research, Investigations and Monitoring Unit at Auckland Council. These will be released throughout 2014.

For more information on Auckland-related census data please contact us on [census@aucklandcouncil.govt.nz](mailto:census@aucklandcouncil.govt.nz).

For more information on the 2013 census, please visit the Statistics New Zealand census website:  
[www.stats.govt.nz/Census/2013-census.aspx](http://www.stats.govt.nz/Census/2013-census.aspx)

To access Auckland-specific data visit our interactive website: [www.censusauckland.co.nz](http://www.censusauckland.co.nz).

## At a glance

At the 2013 New Zealand Census of Population and Dwellings:

- The usually resident population count for the Henderson-Massey local board area was 107,685. Henderson-Massey's population increased by 8,898 (9.0%) between the 2006 and 2013 Censuses.
- Proportions of Māori (15.9%) and Pacific peoples (19.5%) were higher in Henderson-Massey than they were in Auckland as a whole.
- 21.8 per cent of the Henderson-Massey population identified with an Asian ethnic identity, up from 16.7 per cent in 2006.
- Te reo Māori and Samoan were spoken by a greater proportion of people in Henderson-Massey than in Auckland as a whole.
- 23.1 per cent of Henderson-Massey usual residents were children (aged 0-14).
- The median age in Henderson-Massey was 33.5 years, compared to 35.1 years in Auckland as a whole.
- The number of usual residents in Henderson-Massey aged 65 years and over was 11,388 (10.6% of usual residents), up from 9,261 (9.4%) in 2006.
- There were 45,909 employed adults (people aged 15 years and over) in Henderson-Massey. The proportion of adult residents who were employed was 58.9 per cent, compared with 61.5 per cent in Auckland as a whole.
- The median personal income for adults in Henderson-Massey was \$26,800 per annum – lower than that for Auckland as a whole at \$29,600.
- The proportion of Henderson-Massey adults with a formal qualification was 77.0 per cent, up from 72.5 per cent in 2006.
- At the 2013 Census, a total of 34,440 households and 34,509 occupied private dwellings were recorded in Henderson-Massey.
- One-family households were the most common type of household in Henderson-Massey, making up 71.1 per cent of households.
- The median household income in Henderson-Massey was \$66,900 per annum, compared to \$76,500 for Auckland as a whole.
- The majority (84.6%) of the occupied dwellings in Henderson-Massey were separate houses.
- At 61.3 per cent the rate of home ownership in Henderson-Massey was similar than in Auckland as a whole (61.5%). In line with long-term trends, the home ownership rate in Henderson-Massey had declined from 64.6 per cent in 2006.

# Table of Contents

1.0	Introduction .....	1
1.1	Henderson-Massey local board area .....	1
1.2	Important notes on the data .....	1
2.0	Population and growth.....	2
2.1	Auckland's growth slows but remains high.....	2
2.2	Henderson-Massey continues to grow .....	2
3.0	Cultural diversity.....	3
3.1	Henderson-Massey is ethnically diverse .....	3
3.2	Broad changes since 2006 .....	4
3.3	Significant growth in the Asian population.....	5
3.4	Slight increase in numbers of Māori.....	6
3.5	Pacific peoples population growing .....	6
3.6	MELAA category small but growing .....	7
3.7	Te reo Māori and Samoan more common in Henderson-Massey .....	7
4.0	Age.....	9
4.1	Youthful population in Henderson-Massey.....	9
4.2	Older population growing .....	9
5.0	Work and income .....	11
5.1	Lower proportions of Henderson-Massey residents employed.....	11
5.2	Rise in employment for people aged 65 years and over.....	12
5.3	Rise in unemployment for young people .....	12
5.4	Median incomes relatively low .....	12
6.0	Formal education qualifications .....	13
6.1	Lower levels of qualification in Henderson-Massey.....	13
6.2	Increase in levels of qualifications in Henderson-Massey .....	13
7.0	Households and dwellings.....	14
7.1	One-family households prevalent in Henderson-Massey .....	14
7.2	Multi-family households increasing .....	15
7.3	Most dwellings are separate houses.....	15
7.4	Unoccupied dwellings less prevalent in Henderson-Massey .....	15
8.0	Home ownership .....	16
8.1	Home ownership declining in Henderson-Massey.....	16
	Summary Data.....	17

# 1.0 Introduction

This report provides a summary profile for the Henderson-Massey local board area, following the initial release of data from the 2013 New Zealand Census of Population and Dwellings. It presents an overview of key findings as at the 2013 Census, and outlines changes over time since the 2006 Census. A table of key census data is included at the back of this report, for quick reference.

## 1.1 Henderson-Massey local board area

The Henderson-Massey local board area (hereafter referred to as Henderson-Massey) is located at the western end of the Waitemata Harbour. It includes the Te Atatu Peninsula and the suburbs of West Harbour, Westgate, Ranui, Massey, Henderson and Glendene.

Main retail areas are in Henderson and the Massey/Westgate shopping centre. Business activity is also concentrated along the Lincoln Road corridor. Te Atatu town centre is a vibrant neighbourhood centre.

Henderson town centre has a significant local government presence at the Waitakere Central complex, key government services and the Unitec campus. The town centre has an integrated bus and train station, with enhanced access to the heart of the civic, retail and business district.

The area is home to several cultural and recreational facilities, including the Corban Estate Arts Centre, Henderson Valley Studios, West Wave Aquatic Centre, The Trusts Stadium, the Netball Waitakere complex and Massey Leisure Centre. Both Opanuku and Oratia streams flow through Henderson and provide significant environmental, recreational and amenity benefits to the area.

The Henderson town centre is also the base of Te Whānau o Waipareira Trust's activities.

## 1.2 Important notes on the data

Information in this report is based on the census usually resident population count from New Zealand's 2013 Census of Population and Dwellings, held on 5 March 2013. This excludes New Zealand residents who were temporarily overseas on census night.

The data in this report has been randomly rounded to protect confidentiality. Individual figures may not add up to totals, and values for the same data may vary in different tables.

Unless otherwise stated, all percentages in this report exclude responses that cannot be classified (e.g., 'not stated', 'response unidentifiable', 'response out of scope'). This is in line with Statistics New Zealand conventions.

It should be remembered when considering the findings in this report that as the 2011 Census was cancelled, the gap between this census and the last one was seven years, rather than five years so caution should be exercised when comparing inter-censal change.

## 2.0 Population and growth

Auckland has a long history of population growth, fuelled by natural increase (births minus deaths), as well as net migration from overseas and other parts of the country. Findings from the 2013 Census show that growth continued to occur across all local board areas in Auckland, although it is slightly muted when compared with the previous inter-censal period. This section outlines population growth in Auckland prior to discussing Henderson-Massey in particular.

### 2.1 Auckland's growth slows but remains high

The 2013 usually resident population count for Auckland was 1,415,500, constituting 34.0 per cent of New Zealand's total population.

This was an increase of 110,589 people in the seven years since the previous census. Auckland gained the largest number of residents of any local government area in New Zealand and just over half (51.7%) of New Zealand's population growth occurred in Auckland.

Auckland experienced a higher percentage change in population between 2006 and 2013 than did New Zealand overall – 8.5 per cent compared with 5.3 per cent. However, Auckland's percentage change was not as high as some other local government areas across New Zealand, including Selwyn District (32.6%) and Queenstown Lakes District (22.9%).

The average annual growth for Auckland was 1.2 per cent, half of that from the previous inter-censal period (2.4%). This slow-down in the rate of population growth between 2006 and 2013 is likely to be a result of several factors, including a decline in net migration, as the impact of the Global Financial Crisis took effect.

### 2.2 Henderson-Massey continues to grow

The 2013 usually resident population count for Henderson-Massey was 107,685, constituting 7.6 per cent of Auckland's total population.

The usual resident population of Henderson-Massey increased by 8,898 (9.0%) since the 2006 Census. As in Auckland as a whole, growth has slowed in Henderson-Massey from an average annual rate of change of 2.6 per cent between 2001 and 2006 to an average annual population change of 1.2 per cent between 2006 and 2013.

**Table 1: Usually resident population, 2001 to 2013**

	Numbers of usual residents			Percentage change (%)		Annual average change (%)	
	2001	2006	2013	2001 to 2006	2006 to 2013	2001 to 2006	2006 to 2013
Henderson-Massey	86,823	98,787	107,685	13.8	9.0	2.6	1.2
Auckland	1,160,271	1,304,958	1,415,550	12.5	8.5	2.4	1.2

## 3.0 Cultural diversity

This section outlines the ethnic composition of Henderson-Massey at 2013, and also briefly discusses main languages spoken.

Statistics New Zealand identifies ethnicity as a measure of cultural affiliation, as opposed to race, ancestry, nationality or citizenship. In line with previous censuses, people could identify with more than one ethnicity. All responses are included in the data so tables showing proportions may add up to more than 100 per cent.

### 3.1 Henderson-Massey is ethnically diverse

At the 2013 Census, 55.8 per cent of the Henderson-Massey usually resident population identified as European, compared with 59.3 per cent across Auckland as a whole.

Proportions of Māori and Pacific peoples were higher in Henderson-Massey than they were in Auckland as a whole. In 2013, nearly one in five (19.5%) usual residents in Henderson-Massey identified with a Pacific ethnic group, compared to 14.6 per cent in Auckland as a whole.

While those identifying as Māori constituted 10.7 per cent of Auckland's population, 15.9 per cent of Henderson-Massey's population identified as Māori. Furthermore, 11.2 per cent of Auckland's Māori population lived in Henderson-Massey.

Usual residents classified under the broad Asian ethnic category made up 21.8 per cent of the population in Henderson-Massey and 23.1 per cent of the population in Auckland as a whole.

**Table 2: Ethnicity, 2013**

	Henderson-Massey		Auckland	
	Count	%	Count	%
European	56,313	55.8	789,306	59.3
Māori	16,008	15.9	142,767	10.7
Pacific Peoples	19,701	19.5	194,958	14.6
Asian	21,981	21.8	307,233	23.1
MELAA	2,148	2.1	24,945	1.9
Other	1,134	1.1	15,639	1.2
Total people specifying ethnicity	100,884	116.3	1,331,427	110.8
Not elsewhere included	6,801		84,123	
Total people	107,685		1,415,550	

Notes:

MELAA refers to Middle Eastern, Latin American and African.

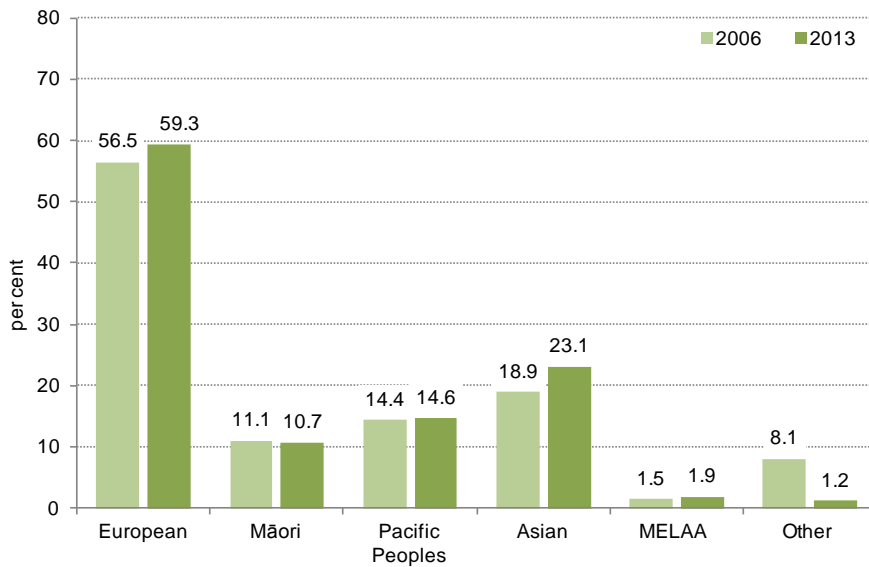
People could choose more than one ethnicity and categories are not exclusive. Percentages will add to more than 100.

Percentages exclude 'not elsewhere included'.

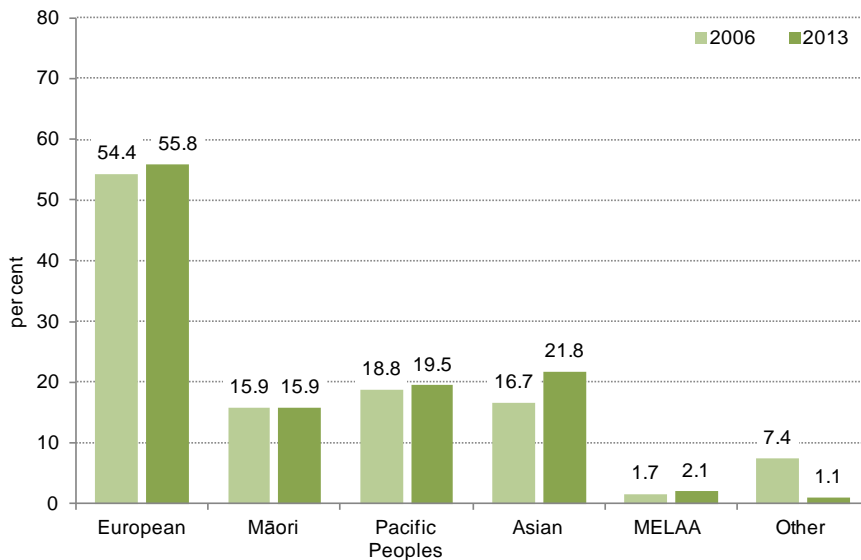
### 3.2 Broad changes since 2006

The graphs below show the changes in the ethnic composition of Auckland and Henderson-Massey between the 2006 and 2013 Censuses. Although these two areas remain predominantly European, they both have a growing proportion of usual residents classified in the broad Asian ethnic category. There has also been a notable decrease in proportions classified as Other – some reasons for this are discussed below.

**Figure 1: Auckland ethnic groups, 2006 and 2013 (%)**



**Figure 2: Henderson-Massey ethnic groups, 2006 and 2013**



Notes:

MELAA refers to Middle Eastern, Latin American and African.

People could choose more than one ethnicity and categories are not exclusive. Percentages will add to more than 100.



The decrease in the Other ethnic category was a national trend and is due in large part to a substantial drop in the numbers who identified as New Zealander. In both 2006 and 2013, almost all Other responses were New Zealander responses. However, the numbers of New Zealander responses declined from a high of 99,474 in 2006 to 14,904 in 2013 in Auckland as a whole, and from 6,798 to 1,044 in Henderson-Massey. The high numbers of New Zealander responses recorded in the 2006 Census were the result of an email campaign and public discussion in the lead-up to the census.<sup>1</sup>

In Henderson-Massey, the European population increased from 54.4 per cent (50,229 usual residents) in 2006 to 55.8 per cent (56,313 usual residents) in 2013. This trend is likely related to the decline in identification as New Zealander. In Auckland as a whole and in Henderson-Massey, there was strong growth in those who identified as New Zealand European, a group likely to have identified as New Zealanders in the 2006 Census.

**Table 3: Changes in five largest European groups, 2006 to 2013**

	Henderson-Massey			Auckland		
	2006	2013	Change 2006 to 2013 (%)	2006	2013	Change 2006 to 2013 (%)
New Zealand European	44,025	50,247	14.1	611,901	696,966	13.9
British and Irish	2,271	2,139	-5.8	35,067	35,379	0.9
Dutch	828	843	1.8	7,785	7,995	2.7
South Slav	687	576	-16.2	3,822	3,528	-7.7
Australian	528	411	-22.2	8,637	7,062	-18.2
Total people specifying ethnicity	92,406	100,884	9.2	1,239,051	1,331,427	7.5

Notes:

This table shows the five largest European groups within the Henderson-Massey local board area at Level 3 classification as at 2013. People could choose more than one ethnicity and groups are not exclusive. Percentages will add to more than 100.

### 3.3 Significant growth in the Asian population

In 2013, 21.8 per cent of the Henderson-Massey population identified with an Asian ethnic identity, up from 16.7 per cent in 2006. The five largest Asian ethnic groups in Henderson-Massey are shown in Table 4 below. Indian has narrowly overtaken Chinese as the largest Asian sub-group and now constitutes 7.3 per cent of the total population in Henderson-Massey, up from 5.4 per cent in 2006. The Chinese ethnic group now constitutes 7.2 per cent of the Henderson-Massey population, up from 5.6 per cent in 2006 (refer also to summary tables at the end of this report).

Of the five largest Asian ethnic groups in Henderson-Massey, the following experienced the most significant growth between 2006 and 2013:

- Filipino – increased by 69.2 per cent to 2,493 usual residents
- Cambodian – increased by 55.8 per cent to 402 usual residents
- Indian – increased by 48.4 per cent to 7,377 usual residents.

<sup>1</sup> For more information, refer to a report prepared in 2007 by Statistics New Zealand on who identified as 'New Zealander' <http://www.stats.govt.nz/Census/about-2006-census/profile-of-nzer-responses-ethnicity-question-2006-census.aspx>

**Table 4: Changes in five largest Asian groups, 2006 to 2013**

	Henderson-Massey			Auckland		
	2006	2013	Change 2006 to 2013 (%)	2006	2013	Change 2006 to 2013 (%)
Indian	4,971	7,377	48.4	74,460	106,329	42.8
Chinese	5,178	7,248	40.0	98,418	118,230	20.1
Filipino	1,473	2,493	69.2	9,825	20,499	108.6
Korean	1,680	1,485	-11.6	21,351	21,981	3.0
Cambodian	258	402	55.8	3,372	4,188	24.2
Total people specifying ethnicity	92,406	100,884	9.2	1,239,051	1,331,427	7.5

Notes:

This table shows the five largest Asian groups within the Henderson-Massey local board area at Level 3 classification as at 2013. People could choose more than one ethnicity and groups are not exclusive. Percentages will add to more than 100.

### 3.4 Slight increase in numbers of Māori

In Henderson-Massey, the Māori population increased from 14,676 in 2006 to 16,008 in 2013, but their proportion of the population remained unchanged at 15.9 per cent.

### 3.5 Pacific peoples population growing

There was an increase in the number of Pacific peoples in Henderson-Massey from 17,343 usual residents (18.8% of the population) in 2006 to 19,701 (19.5%) in 2013 (as shown in Figure 2).

Table 5 presents data for the five largest Pacific sub-groups in Henderson-Massey. Samoan remains the largest Pacific sub-group with 10,644 usual residents in 2013, constituting 12.3 per cent of the local board area's population. The Fijian ethnic group experienced the most significant growth between 2006 and 2013, with numbers of usual residents identifying as Fijian increasing by 41.4 per cent from 789 to 1,116.

**Table 5: Changes in five largest Pacific groups, 2006 to 2013**

	Henderson-Massey			Auckland		
	2006	2013	Change 2006 to 2013 (%)	2006	2013	Change 2006 to 2013 (%)
Samoan	9,480	10,644	12.3	87,840	95,916	9.2
Cook Islands Maori	2,718	2,958	8.8	34,788	36,810	5.8
Tongan	2,169	2,709	24.9	40,140	46,971	17.0
Niuean	1,677	1,977	17.9	17,667	18,555	5.0
Fijian	789	1,116	41.4	5,847	8,493	45.3
Total people specifying ethnicity	92,406	100,884	9.2	1,239,051	1,331,427	7.5

Notes:

This table shows the five largest Pacific groups within the Henderson-Massey local board area at Level 3 classification as at 2013. People could choose more than one ethnicity and groups are not exclusive. Percentages will add to more than 100.

### 3.6 MELAA category small but growing

The MELAA category in Henderson-Massey grew from 1.7 per cent (1,545) of the population in 2006 to 2.1 per cent (2,148) in 2013. The table below shows that within the MELAA category, growth has occurred mainly in the Latin American and African ethnic groups and less so in the Middle Eastern ethnic group.

**Table 6: Changes in MELAA groups, 2006 to 2013**

	Henderson-Massey			Auckland		
	2006	2013	Change 2006 to 2013 (%)	2006	2013	Change 2006 to 2013 (%)
Middle Eastern	801	930	16.1	10,710	12,864	20.1
Latin American	258	474	83.7	3,090	5,820	88.3
African	489	744	52.1	4,800	6,303	31.3
Total people specifying ethnicity	92,406	100,884	9.2	1,239,051	1,331,427	7.5

Notes:

This table shows all MELAA groups within Henderson-Massey local board area at Level 3 classification as at 2013.

People could choose more than one ethnicity and groups are not exclusive. Percentages will add to more than 100.

### 3.7 Te reo Māori and Samoan more common in Henderson-Massey

English was the most common language in which people could hold a conversation about everyday things, with 1,233,633 speakers in Auckland (95.6% of the usually resident population) and 92,850 speakers in Henderson-Massey (95.5%).

Samoan was the next most common language in Auckland (58,200 speakers; 4.5% of usual residents) and in Henderson-Massey (6,156 speakers; 6.3%). Te reo Māori was more common in Henderson-Massey (3,591 speakers; 3.7% of usual residents) than in Auckland as a whole (30,927 speakers; 2.4%).

Hindi was equally prevalent in Henderson-Massey and Auckland as a whole (3.8%), whereas the Sinitic (Chinese) languages were slightly less prevalent in Henderson-Massey than in Auckland.

**Table 7: Top 10 languages spoken, 2013**

	Henderson-Massey		Auckland	
	Count	%	Count	%
English	92,850	95.5	1,233,633	95.6
Samoan	6,156	6.3	58,200	4.5
Hindi	3,708	3.8	49,518	3.8
Māori	3,591	3.7	30,927	2.4
Northern Chinese <sup>(1)</sup>	2,160	2.2	38,781	3.0
Yue <sup>(2)</sup>	1,839	1.9	30,681	2.4
Sinitic not further defined <sup>(3)</sup>	1,824	1.9	30,282	2.3
Tagalog	1,752	1.8	14,925	1.2
Korean	1,308	1.3	19,365	1.5
Tongan	1,230	1.3	26,028	2.0
Total people stated	70,131	-	1,316,262	-
Not elsewhere included	7,170	-	101,961	-
Total people	77,136	-	1,415,550	-

Notes:

- 1) Includes Mandarin
- 2) Includes Cantonese
- 3) Includes Chinese languages not further defined.

People could identify more than one language so percentages will not add to 100.

Percentages calculated excluding 'not elsewhere included' and 'too young to talk' responses.

## 4.0 Age

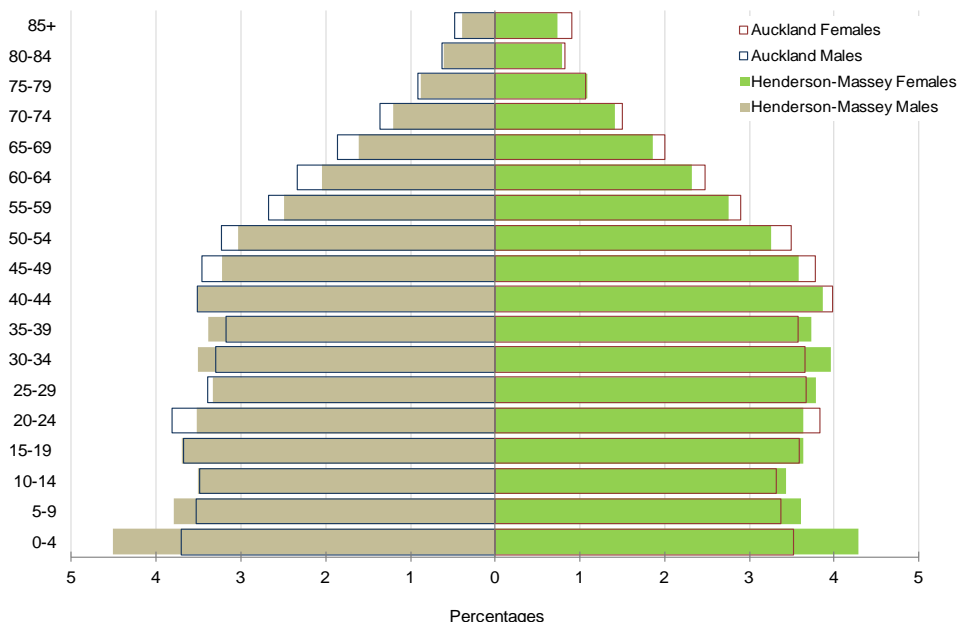
At the time of the 2013 Census, the median age in Henderson-Massey was 33.5 years, compared to 35.1 in Auckland as a whole.

### 4.1 Youthful population in Henderson-Massey

In 2013, the proportions of children in Henderson-Massey were high compared to Auckland as a whole (23.1% aged 0 to 14 years compared with 20.9%). The proportions of the population in the 30-39 age group are also slightly high in Henderson-Massey (14.6% compared 13.7% for Auckland), suggesting that this local board area is particularly popular for families.

The proportions of those aged 65 years and over were relatively low (10.6% compared with 11.5% for Auckland).

**Figure 3: Age-sex structure, Henderson-Massey compared with Auckland, 2013**



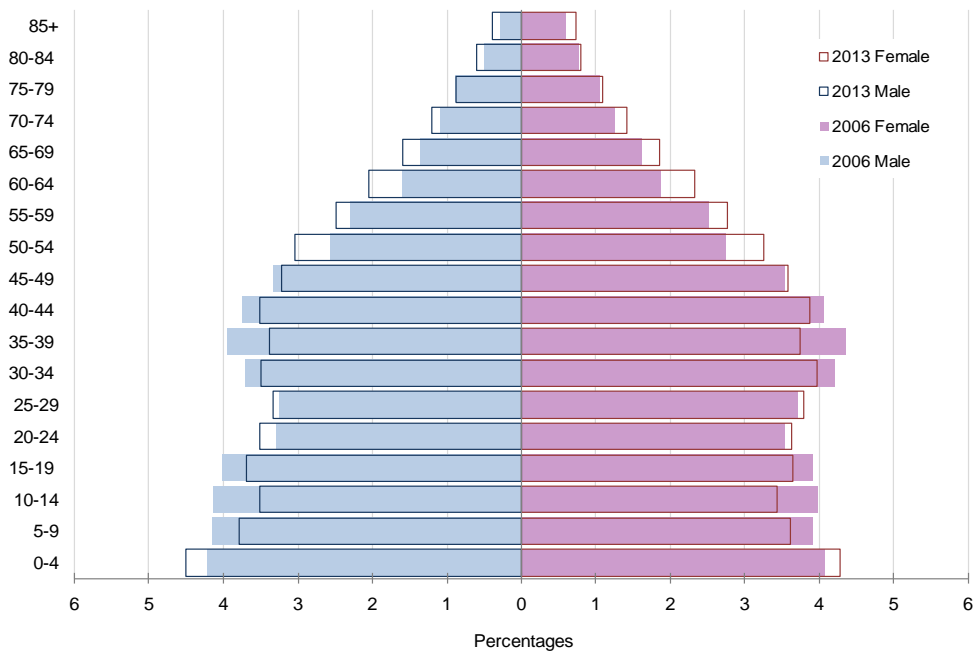
### 4.2 Older population growing

Auckland experienced a 27 per cent increase in the number of usual residents who were aged 65 years and over between 2006 and 2013, equating to an additional 34,600 older people since 2006. This is a part of a long-term national and global trend of population ageing that has arisen as people live longer and fertility rates decline. Ageing means that there will be numerically and proportionately more people in older age groups over the next few decades. As the age-sex structure (Figure 4) shows, this is also occurring in Henderson-Massey.

The number of usual residents aged 65 years and over in Henderson-Massey increased between 2006 and 2013, from 9,261 (9.4% of the population) to 11,388 (10.6%). If one considers older age groups more broadly, growth is even more apparent. The proportion of Henderson-Massey's

population aged over 50 years has increased from 23.0 per cent (22,674 usual residents) to 26.5 per cent (28,518).

**Figure 4: Age-sex structure, Henderson-Massey, 2006 and 2013**



## 5.0 Work and income

This section describes the work and labour force status of adults (usual residents aged 15 years and over). People were defined as employed if they worked for one hour or more for pay or profit, or without pay in a family farm, business, or professional practice, or if they had a job but were not at work for some reason.

People were defined as 'not in the labour force' if they were not employed and were not actively seeking work. This includes students, people caring for children or other family members, retired people, and people who were unable to work for some reason such as illness or disability.

The unemployment rate is the number of people aged 15 years and over who did not have a paid job, were available for work, and were actively seeking work, expressed as a percentage of the labour force. Please note that the official unemployment rate in New Zealand is calculated by Statistics New Zealand using the quarterly Household Labour Force Survey. Also, the data presented here masks fairly significant variation in unemployment rates between 2006 and 2013, particularly following the Global Financial Crisis (GFC).

### 5.1 Lower proportions of Henderson-Massey residents employed

At the time of the 2013 Census, there were 650,610 employed adults (usual residents aged 15 years and over) in Auckland as a whole and 45,909 in Henderson-Massey. In Auckland, those who were employed made up 61.5 per cent of adults, down from 64.7 per cent in 2006. In Henderson-Massey the proportion of adults who were employed was lower and had declined from 63.7 per cent in 2006 to 58.9 per cent in 2013.

**Table 8: Work and labour force status,<sup>(1)</sup> for the usually resident population aged 15 and over, 2006 and 2013**

	Henderson-Massey				Auckland			
	2006		2013		2006		2013	
	Count	%	Count	%	Count	%	Count	%
Employed full-time	35,955	51.0	36,831	47.3	496,071	51.1	513,204	48.5
Employed part-time	8,925	12.7	9,078	11.6	132,777	13.7	137,406	13.0
Unemployed <sup>(2)</sup>	2,997	4.3	4,926	6.3	37,305	3.8	57,483	5.4
Not in labour force	22,554	32.0	27,117	34.8	305,358	31.4	349,923	33.1
Total people stated	70,434	100.0	77,949	100.0	971,514	100.0	1,058,016	100.0
Work and labour force status unidentifiable	4,185		4,809		44,334		61,179	
Total people	74,616		82,758		1,015,848		1,119,195	
<i>Subtotals</i>								
Total people in labour force	47,880	68.0	50,832	65.2	666,156	68.6	708,093	66.9
Total people employed	44,880	63.7	45,909	58.9	628,851	64.7	650,610	61.5
<i>Unemployment rate<sup>(3)</sup></i>		6.3		9.7		5.6		8.1

Notes:

- 1) A person's work and labour force status in the seven days ending 5 March 2006 and 3 March 2013.
- 2) The number and proportion of adults who are unemployed.
- 3) The proportion of adults *in the labour force* who are unemployed.

All percentages are calculated as a proportion of 'Total people stated', except for the unemployment rate which is calculated as a proportion of 'Total people in labour force'.

The unemployment rate increased between 2006 and 2013, from 5.6 per cent (of those in the labour force) to 8.1 per cent in Auckland, and from 6.3 per cent to 9.7 per cent in Henderson-Massey. Changes in employment and unemployment reflect the economic slowdown that resulted from the GFC.

A third of Auckland adults (349,923 usual residents aged 15 and over) were not in the labour force in 2013. The proportion of adults not in the labour force was slightly higher in Henderson-Massey, at 34.8 per cent (27,117).

## **5.2 Rise in employment for people aged 65 years and over**

Between 2006 and 2013 the proportion of those aged 65 years and over who were employed increased in Auckland from 17.1 per cent to 22.0 per cent, and in Henderson-Massey from 15.5 per cent to 18.4 per cent.

## **5.3 Rise in unemployment for young people**

The unemployment rate for young people (those aged 15-24 years) rose between 2006 and 2013 from 14.3 per cent (16,986 usual residents) to 20.3 per cent (22,815 usual residents) for Auckland, and from 15.4 per cent (1,359 usual residents) to 24.6 per cent (1,989 usual residents) for Henderson-Massey.

There was also a general decline in young people's labour force participation between 2006 and 2013. In Auckland, 56.7 per cent of young people were in the labour force in 2013 down from 62.7 per cent in 2006. In Henderson-Massey 55.2 per cent of young people were in the labour force in 2013 down from 64.1 per cent in 2006.

## **5.4 Median incomes relatively low**

The median personal income for adults (people aged 15 years and over) in Henderson-Massey was \$26,800 per annum – lower than that for Auckland as a whole at \$29,600. Furthermore, a smaller proportion of adults in Henderson-Massey (2.9%) had a personal income of over \$100,000 per annum compared to Auckland as a whole (7.4%). A personal income of \$20,000 or less was reported by 41.3 per cent of adults in Henderson-Massey, compared to 39.0 per cent in Auckland.

In 2013, the median household income in Henderson-Massey was \$66,900 per annum, compared to \$76,500 for Auckland as a whole.



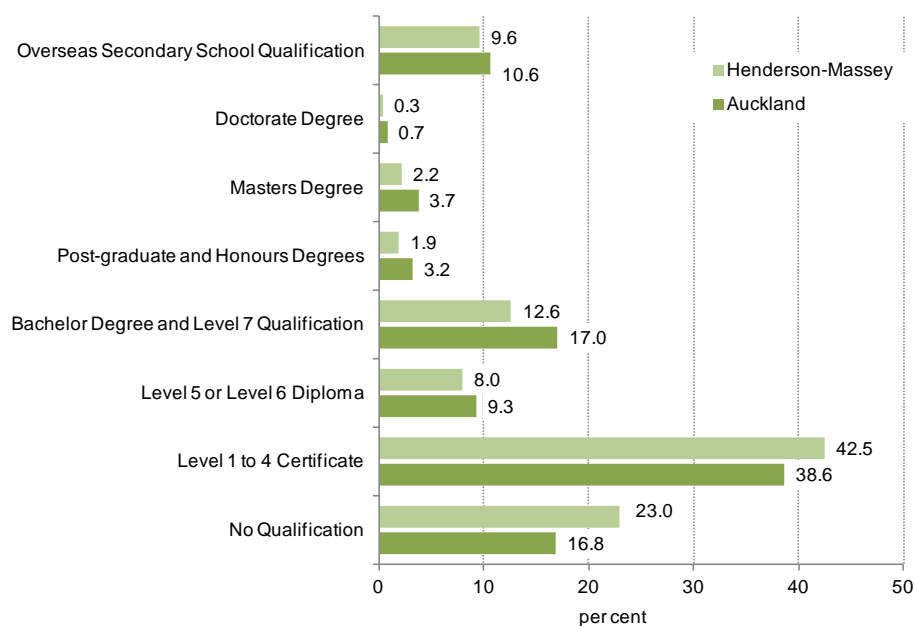
## 6.0 Formal education qualifications

Statistics New Zealand identify a formal qualification as a formally recognised award for educational or training attainment that requires at least three months of full-time study (or the part-time equivalent).

### 6.1 Lower levels of qualification in Henderson-Massey

The graph below shows the highest education qualifications of adults (people aged 15 years and over) in Auckland as a whole and in Henderson-Massey. In 2013, higher proportions of Māngere-Ōtāhuhu adults had no qualification at 23.0 per cent, compared to 16.8 per cent for Auckland as a whole. Level 1 to 4 qualifications were also more common in Henderson-Massey (42.5 per cent of adult residents) than in Auckland as a whole (38.6%). This may in part reflect the age structure in Henderson-Massey, i.e., higher proportions of the population too young to have yet attained tertiary qualifications, as well as the employment and economic context of this local board area.

**Figure 5: Highest education qualification for people aged 15 and over, 2013**



### 6.2 Increase in levels of qualifications in Henderson-Massey

The number and proportion of adults with higher educational qualifications are increasing in Auckland as a whole, and in Henderson-Massey. In 2013, 83.2 per cent of all Auckland adults (people aged 15 years and over) had a formal qualification, up from 79.7 per cent in 2006. In Henderson-Massey the proportion of adults with a formal qualification increased from 72.5 per cent in 2006 to 77.0 per cent in 2013.

Nearly a quarter (24.6%) of adults in Auckland had a university degree or equivalent in 2013, up from 19.9 per cent in 2006. The percentage of those with a university degree or equivalent in Henderson-Massey was lower, but increased from 12.3 per cent in 2006 to 17.0 per cent in 2013.

## 7.0 Households and dwellings

Statistics New Zealand define a 'household' as either one person who usually resides alone, or two or more people who usually reside together and share facilities (such as eating facilities, cooking facilities, bathroom facilities, and a living area), in a private dwelling. A family is defined as a couple, with or without child(ren), or one parent and their child(ren), all of whom have usual residence together in the same household. The children do not have partners or children of their own living in the household. A household can contain one or more families, or can contain no families at all.

A dwelling is defined as a structure, part of a structure, or group of structures that is used, or intended to be used as a place where people reside. It may be permanent or temporary and may function as private or non-private (eg. providing short- or long-term communal or transitory type accommodation).

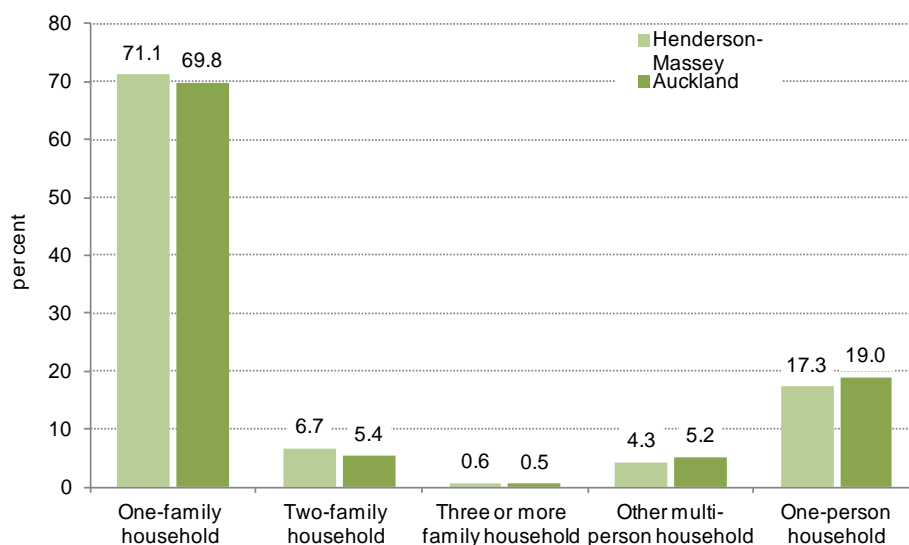
At the 2013 Census, a total of 34,440 households and 34,509 occupied private dwellings were recorded in Henderson-Massey.

### 7.1 One-family households prevalent in Henderson-Massey

In 2013, one-family households were the most common type of household in Henderson-Massey, making up 71.1 per cent of households. In Auckland as a whole, one-family households constituted 69.8 per cent of households.

Two-family and three or more family households were slightly more common in Henderson-Massey than in Auckland as a whole. In Henderson-Massey two-family households constituted 6.7 per cent of households compared to 5.4 per cent in Auckland as a whole.

**Figure 6: Household composition, 2013**



## 7.2 Multi-family households increasing

In Henderson-Massey there was an increase between 2006 and 2013 in the numbers of all household types. Growth in numbers of two-family and three or more family households was strong, while growth in numbers of one-family was relatively modest. This resulted in a decline in the proportion of households consisting of a single family and an increase in the proportions of households consisting of two or more families.

**Table 9: Changes in household composition, 2006 to 2013**

	Henderson-Massey		Auckland	
	Change 2006 to 2013 (Count)	Change 2006 to 2013 (%)	Change 2006 to 2013 (Count)	Change 2006 to 2013 (%)
One-family household*	1,599	7.3	20,496	6.9
Two-family household*	600	37.0	6318	34.5
Three or more family household*	72	51.1	747	44.4
Other multi-person household	183	14.8	912	4.0
One-person household	282	5.2	3660	4.4
Total households stated	2,739	9.0	32,124	7.6
Household composition unidentifiable	-12	-1.0	3105	26.7
Total households	2,730	8.6	35,232	8.1

Notes:

\* with or without other people.

## 7.3 Most dwellings are separate houses

In 2013, three quarters (74.7%) of the occupied dwellings in Auckland were separate houses. This proportion was higher in Henderson-Massey, at 84.6 per cent. Attached dwellings – i.e., two or more flats/ units/ townhouses/ apartments/ houses joined together – were less prevalent in Henderson-Massey at 14.9 per cent, than in Auckland as a whole at 24.8 per cent.

While there have been increases in Henderson-Massey in the numbers of dwellings in each dwelling type between 2006 and 2013, proportions of dwellings in each type remain relatively unchanged.

## 7.4 Unoccupied dwellings less prevalent in Henderson-Massey

The number of unoccupied dwellings in Henderson-Massey increased from 1,467 in 2006 to 1,596 in 2013. The proportion of dwellings in this local board that were unoccupied remained constant at 4.4 per cent.<sup>2</sup>

Unoccupied dwellings were less prevalent in Henderson-Massey than in Auckland as a whole where they constituted 6.6 per cent of all dwellings in 2013.

<sup>2</sup> Note that these figures do not include dwellings under construction.

## 8.0 Home ownership

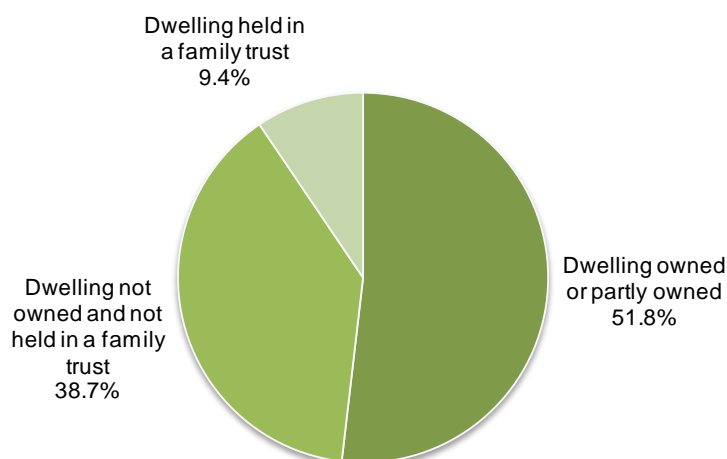
Census data provides information on ownership level of the dwelling by the people who live in it, as at the time of Census. Census does not provide information on ownership of any other dwellings or properties by those people.

### 8.1 Home ownership declining in Henderson-Massey

In 2013, 61.3 per cent of households in private occupied dwellings in Henderson-Massey owned the dwelling, or held that dwelling in a family trust. The home ownership rate (this includes both dwellings owned by occupants and those held in family trusts) was similar to that in Auckland as a whole (61.5%).

In line with long-term trends, home ownership declined in Henderson-Massey from a rate of 64.6 per cent in 2006.

**Figure 7: Tenure in Henderson-Massey, 2013**



**Table 10: Changes in tenure, 2006 to 2013**

	Henderson-Massey			Auckland		
	2006	2013	Change 2006 to 2013 (%)	2006	2013	Change 2006 to 2013 (%)
Owned or part owned	16,320	16,470	0.9	204,711	201,411	-1.6
Held in a family trust	2,361	2,994	26.8	52,791	67,533	27.9
Not owned and not held in a family trust	10,221	12,309	20.4	145,953	168,708	15.6
Total households stated	28,905	31,773	9.9	403,455	437,649	8.5
Not elsewhere included	2,805	2,667	-4.9	30,810	31,851	3.4
Total households	31,710	34,440	8.6	434,265	469,500	8.1

# Summary Data

	Henderson-Massey	Auckland	New Zealand
<b>Population</b>			
2013	107,685	1,415,550	4,242,048
2006	98,787	1,304,958	4,027,947
2001	86,823	1,160,271	3,737,280
<b>Growth 2006 to 2013: Numbers</b>	8,898	110,592	214,101
<b>Growth 2006 to 2013: %</b>	9.0	8.5	5.3
<b>Age: Numbers</b>			
Under 15 years	24,927	296,358	865,632
15 to 64 years	71,370	956,034	2,769,387
65 years and over	11,388	163,152	607,032
Total	107,685	1,415,544	4,242,051
<b>Age: %</b>			
Under 15 years	23.1	20.9	20.4
15 to 64 years	66.3	67.5	65.3
65 years and over	10.6	11.5	14.3
Total	100.0	100.0	100.0
<b>Ethnicity: Numbers</b>			
European	56,313	789,306	2,969,391
Māori	16,008	142,767	598,602
Pacific Peoples	19,701	194,958	295,941
Asian	21,981	307,233	471,708
MELAA	2,148	24,945	46,956
Other	1,134	15,639	67,752
Total people who stated an ethnicity	100,884	1,331,427	4,011,402
<b>Ethnicity: %</b>			
European	55.8	59.3	74.0
Māori	15.9	10.7	14.9
Pacific Peoples	19.5	14.6	7.4
Asian	21.8	23.1	11.8
MELAA	2.1	1.9	1.2
Other	1.1	1.2	1.7
Total people who stated an ethnicity	116.3	110.8	110.9
<b>Highest education qualification: numbers (of those aged 15 years and over)</b>			
No qualification	16,599	166,785	628,377
Secondary qualification (Level 1 to 4)	30,714	383,082	1,291,335
Level 5 or Level 6 Diploma	5,766	91,923	278,091
Bachelor degree or Level 7 qualification	9,117	168,924	408,444
Post-graduate and Honours degree	1,389	31,854	86,598
Masters degree	1,557	36,792	83,949
Doctorate degree	237	7,428	22,317
Overseas secondary school qualification	6,942	105,201	201,519
Total people stated	72,324	991,986	3,000,633

	Henderson-Massey	Auckland	New Zealand
<b>Highest education qualification: % (of those aged 15 years and over)</b>			
No qualification	16,599	16.8	20.9
Secondary qualification (Level 1 to 4)	30,714	38.6	43.0
Level 5 or Level 6 Diploma	5,766	9.3	9.3
Bachelor degree or Level 7 qualification	9,117	17.0	13.6
Post-graduate and Honours degree	1,389	3.2	2.9
Masters degree	1,557	3.7	2.8
Doctorate degree	237	0.7	0.7
Overseas secondary school qualification	6,942	10.6	6.7
Total people stated	72,324	100.0	100.0
<b>Work and labour force status: % (of those aged 15 years and over)</b>			
Employed full time	47.3	48.5	48.0
Employed part time	11.6	13.0	14.3
Unemployed	6.3	5.4	4.8
Not in the labour force	34.8	33.1	32.9
Total	100.0	100.0	100.0
<b>Median personal income \$</b>	\$26,800	\$29,600	\$28,500
<b>Number of occupied dwellings</b>			
Private dwellings	34,509	472,044	1,561,956
Non-private dwellings	75	1,407	8,739
Total occupied dwellings	34,584	473,451	1,570,698
<b>Number of households</b>			
2013	34,440	469,500	1,549,890
<b>Household composition: numbers</b>			
One-family household #	23,616	317,619	1,030,497
Two-family household #	2,220	24,612	47,433
Three or more family household #	213	2,430	3,588
Other multi-person household	1,416	23,580	72,384
One person household	5,754	86,547	355,242
Total households stated	33,222	454,782	1,509,144
<b>Household composition: %</b>			
One-family household	71.1	69.8	68.3
Two-family household	6.7	5.4	3.1
Three or more family household	0.6	0.5	0.2
Other multi-person household	4.3	5.2	4.8
One person household	17.3	19.0	23.5
Total households stated	100.0	100.0	100.0
<b>Median household income \$</b>	\$66,900	\$76,500	63,800
<b>Tenure: %</b>			
Dwelling owned or partly owned	51.8	46.0	49.9
Dwelling held in a family trust	9.4	15.4	14.8
Dwelling not owned and not held in a family trust	38.7	38.5	35.2
Total households stated	100.0	100.0	100.0

# With or without other people

Note that in line with Statistics New Zealand conventions, the calculation of percentages excludes 'not elsewhere included' responses.