

# Beach Haven Coastal Connections

## Kaipatiki Local Board



Grant Jennings - Manager Kauri Dieback & Track Specialist - PSO

Leigh Radovan – Senior Project Manager Kauri Dieback - PSO

August 2021



# Purpose

**To update and obtain feedback from the Kaipatiki Local Board on the proposed track renewals in Shepherds Park and Hellyers Creek Reserve**





# **Friends of Shepherds Park**

## **Feedback from on site walkover**

### **Support**

- **Aggregate track**
- **Accessibility –step free for all including wheelchairs and prams**
- **Current track layout – no change**
- **Upgraded lookout in Shepherds Park**
- **Step free access to beach**

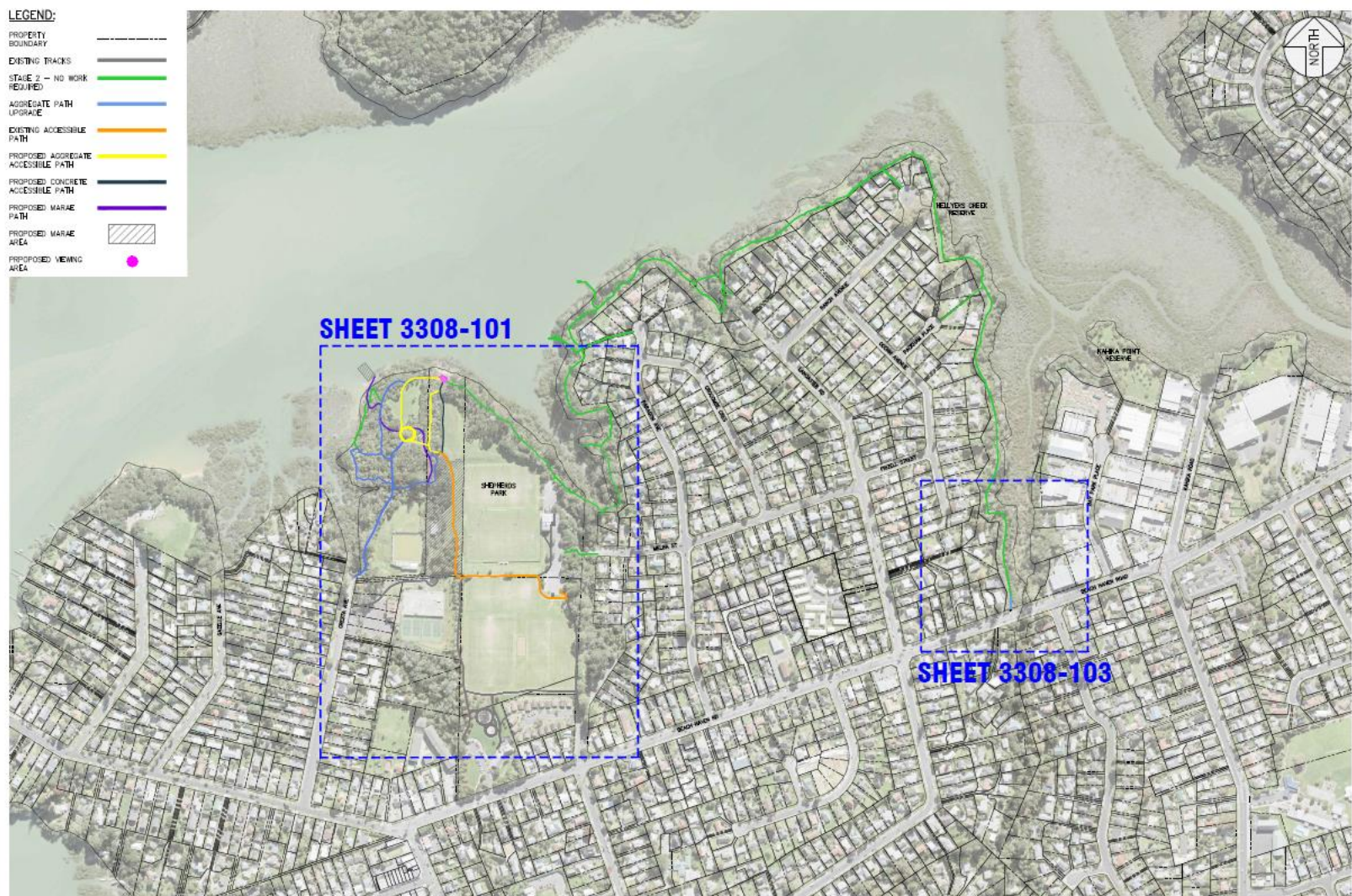




# Overall Plan

**LEGEND:**

PROPERTY BOUNDARY	---
EXISTING TRACKS	—
STAGE 2 - NO WORK REQUIRED	—
AGGREGATE PATH UPGRADE	—
EXISTING ACCESSIBLE PATH	—
PROPOSED AGGREGATE ACCESSIBLE PATH	—
PROPOSED CONCRETE ACCESSIBLE PATH	—
PROPOSED MARAE PATH	—
PROPOSED MARAE AREA	▨
PROPOSED VIEWING AREA	●





- LEGEND:**
- PROPERTY BOUNDARY
  - EXISTING TRACKS
  - STAGE 2 - NO WORK REQUIRED
  - DECOMMISSION EXISTING TRACK
  - AGGREGATE PATH UPGRADE
  - EXISTING ACCESSIBLE PATH
  - PROPOSED AGGREGATE ACCESSIBLE PATH
  - PROPOSED CONCRETE ACCESSIBLE PATH
  - PROPOSED MARAE PATH
  - PROPOSED MARAE AREA
  - PROPOSED VIEWING AREA

# Stage 1 Upgrade Tracks





**LEGEND:**

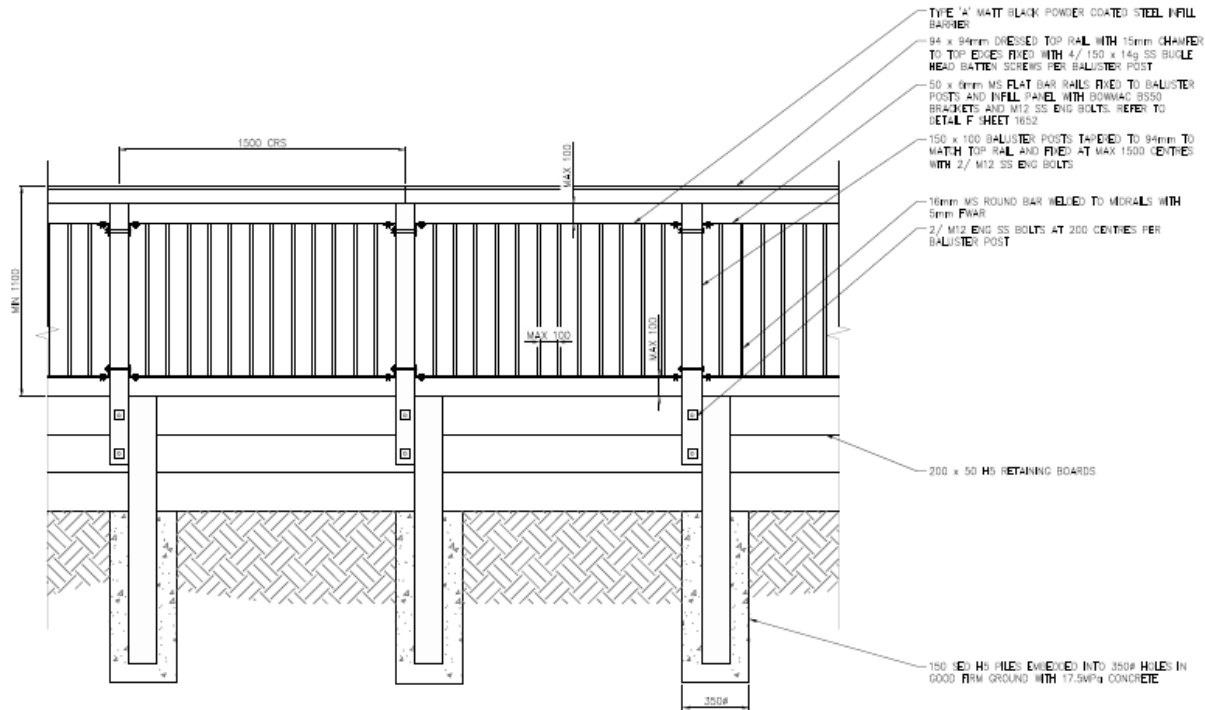
- PROPERTY BOUNDARY 
- STAGE 2 - NO WORK REQUIRED 
- DECOMMISSION EXISTING TRACK 
- AGGREGATE PATH UPGRADE 
- EXISTING ACCESSIBLE PATH 
- PROPOSED AGGREGATE ACCESSIBLE PATH 
- PROPOSED CONCRETE ACCESSIBLE PATH 
- PROPOSED FENCE 
- PROPOSED VIEWING AREA 



# Lookout Upgrade



# Barrier for Lookout



01 TYPICAL BARRIER ELEVATION  
SCALE: 1:25 @ A3



# Beach Haven Road Entrance Upgrade







**End**

# Chelsea Estate Heritage Park

## Regional Park Assessment

August 2021

*Community & Social Policy*

*Community Facilities*

*Parks Sports & Recreation*

# What brings us here?

- Kaipātiki Local Parks Management Plan consultation (August 2019)
- Regional Park Management Plan review consultation (Oct 2020)
- Kaipātiki Local Board workshop (February 2021)

## Key issues reported by the local board and the public

- Maintenance issues
- Heritage protection
- Environmental
- Not enough budget to address issues
- Need long-term management planning
- Public awareness

# Three options

- **Option A (*status quo*)**– Chelsea Estate Heritage Park remains a destination park (governed by the Kaipātiki Local Board)
- **Option B** - Chelsea Estate Heritage Park and surrounding parks are designated as a regional park (governed by the Governing Body)
- **Option C** - Chelsea Estate Heritage Park and surrounding parks are designated as a regional asset (governed by the Governing Body)

# Assessment

- No set framework for assessing designating a local park as a regional park

## Assessment tools utilised

1. Does the park meet the values expressed in the Regional Parks Management Plan?
2. What are the pros and cons of each option? Do the the options help address key issues?

Maintenance (inc. duck ponds and landscaping)	Heritage Protection (inc. factory buildings and iwi history)	Environmental (bird and tree diversity and protection)	Budget/ Resource	Long-term management planning	Public awareness
--	---	---	---------------------	-------------------------------------	------------------

3. Where does governance best sit based on Local Government (Auckland Council) Act 2009?

# 1. Does Chelsea Estate Heritage Park meet the values expressed in the 2010 Regional Park Management Plan?

- Natural
- Landscape
- Tangata whenua
- Cultural
- Recreational
- Economic

# What we know about the park - People's Panel findings (May 2021)

- Chelsea Estate Heritage Park very popular with local residents
- Chelsea Estate Heritage Park attracts visitors from further in the region
- Visitors tend to live either locally or in surrounding local boards
- Visiting the café is the main reason for visitation to Chelsea Estate Heritage Park
- Surrounding parks not as popular
- Over 80% of visitors to Chelsea spent less than two hours there
- Chelsea Estate Heritage Park attracts older, more European visitors

# What we know about the park

- The reserve has areas of dense tree coverage, including mature Kauri trees
- The reserve is a segment of the Northwest bird corridor, has an English Estate-style park and heritage cottages from the Chelsea Sugar Factory
- Chelsea Sugar Factory has rights to operate unimpeded 24/7
- Reserve has limited sport and recreation opportunities, largely due to the topography and dense tree coverage
- Visitor infrastructure is limited with few public toilets, parking or space for hosting large events
- There is mana whenua significance on the reserve but no local iwi are currently involved formally with the management of the park



# What we know about regional parks (People's panel)

- The most popular regional parks are:
  - Waitākere Ranges Regional Park (visited by 34% of respondents)
  - Auckland Botanic Gardens (29%)
  - Long Bay Regional Park (28%)
  - Muriwai Regional Park (26%)
- Some regional parks are less visited, such as Ātiu Creek Regional Park (3%) Waitawa Regional Park (5%)
- Regional parks attract visitors from all over Auckland but are especially popular with those residing in surrounding local board areas.
- Visitors to regional parks tend to spend half a day or more at the park i.e., 48% spent over three hours.
- The main driver for those who visited regional parks in the past year was being close to nature (49%).

## 2. Options matrix (pros/cons) against areas of concern

Maintenance (inc. duck ponds and landscaping)	Heritage Protection (inc. factory buildings and iwi history)	Environmental (bird and tree diversity and protection)	Budget/ Resource	Long-term management planning	Public awareness
--	---	---	---------------------	-------------------------------------	------------------

- **Option A (*status quo*)**– Chelsea Estate Heritage Park remains a destination park (governed by the Kaipātiki Local Board)
- **Option B** - Chelsea Estate Heritage Park and surrounding parks are designated as a regional park (governed by the Governing Body)
- **Option C** - Chelsea Estate Heritage Park and surrounding parks are designated as a regional asset (governed by the Governing Body)

# 3. Local Government (Auckland Council) Act 2009

## *Section 17*

- i. Will the impact of the decisions extend beyond a single local board area?
- ii. Will it be easier/more effective to achieve alignment and/or integrated decision making with other Auckland Council decisions if the allocation moves to the governing body?
- iii. Will the benefits of a consistent or co-ordinated approach across Auckland outweigh the benefits of reflecting the diverse needs and preferences of the communities within the local board area?

# Next steps