

Kaipātiki Local Board Workshop Programme

Date of Workshop: Wednesday 3 May 2023
Time: 10.00am
Venue: Boardroom, 90 Bentley Ave, Glenfield

Time	Workshop Item	Presenter	Governance role	Proposed Outcome(s)
10.00am – 12.00pm	LB Annual Planning workshop 4 – Annual Budget consultation feedback and input on regional topics	Paul Edwards Senior Local Board Advisor, Local Board Services	<ul style="list-style-type: none"> Engagement 	<ul style="list-style-type: none"> Hear formal submissions / deliberate
12.00 – 12.45pm	Lunch			
12.45 – 1.45pm	FIFA – Business and Community Toolkit	Tia Verran Advisor External Relations, Tātaki Auckland Unlimited Santha Brown FIFA Programme Director, Tātaki Auckland Unlimited Kylie Robertson FIFA Programme Marketing Manager, Tātaki Auckland Unlimited Neil Coventry FIFA Programme Manager (Training Venue), Tātaki Auckland Unlimited	<ul style="list-style-type: none"> Keeping informed 	<ul style="list-style-type: none"> Receive update

1.45 – 2.45pm	Auckland Transport <ul style="list-style-type: none"> Beach Haven Road Pedestrian Crossing Pupuke Road / Ocean View Road Intersection 	<p>Marilyn Nicholls Elected Member Relationship Partner (North), Auckland Transport</p> <p>Michael Hamerton Development Planner, Auckland Transport</p> <p>Matthew Ah Mu Programme Support Manager, Auckland Transport</p>	<ul style="list-style-type: none"> Setting direction 	<ul style="list-style-type: none"> Define board position and feedback
2.45 – 3.00pm	Break			
3.00 – 4.00pm	Local Board Plan Development session continued	<p>Paul Edwards Senior Local Board Advisor, Local Board Services</p>	<ul style="list-style-type: none"> Setting direction 	<ul style="list-style-type: none"> Define board position and feedback

Next workshop: Wednesday 10 May 2023

10-May-23	9.15am	9.50am	Members only time
	10.00am	11.00am	Kaipātiki Local Board business meeting
	11.00am	11.10am	Break
	11.10am	12.10pm	Local Grants Round 3 & Multi-board grants round 2
	12.10pm	1.00pm	Lunch
	1.00pm	5.00pm	LB Annual Planning workshop 5 - Draft local board work programmes 2023/2024 and Performance measures

Role of Workshop:

- Workshops do not have decision-making authority.
- Workshops are used to canvass issues, prepare local board members for upcoming decisions and to enable discussion between elected members and staff.
- Workshops are open to the public however, decisions will be made at a formal, public local board business meeting.
- Members are respectfully reminded of their Code of Conduct obligations with respect to conflicts of interest and confidentiality.
- Workshops for groups of local boards can be held giving local boards the chance to work together on common interests or topics.

Local board agreements and work programmes

Workshop: Discuss and consider consultation feedback and input on regional topics

Kaipātiki Local Board



Workshop purpose

1. To receive consultation feedback from the Kaipātiki Local Board area on:
 - proposed local board priorities for 2023/2024
 - proposed local activities to discontinue, reduce spending on, or increase fees to meet the Governing Body's proposed reduction in local board funding
 - regional topics in the draft Annual Budget 2023/2024
2. Discuss local feedback on regional topics to be formalised at your business meeting on 10 May 2023. These will be considered by the Governing Body when making decisions on the Annual Budget 2023/2024



LBA Workshop: agenda

Topic		Time
Topic 1	Consultation feedback on local board priorities for 2023/2024 and advocacy initiatives	
Topic 2	Consultation feedback on regional topics in the proposed Annual Budget 2023/2024	
Topic 3	Staff survey on Annual Budget	
Topic 4	Advocacy	
Topic 5	Input on regional topics in the proposed Annual Budget 2023/2024	



Topic 1: Consultation feedback



Types of feedback

- Online submissions, hard copy forms, emails and letters.
- Have Your Say events, phone surveys
- Auckland Council social media channels.

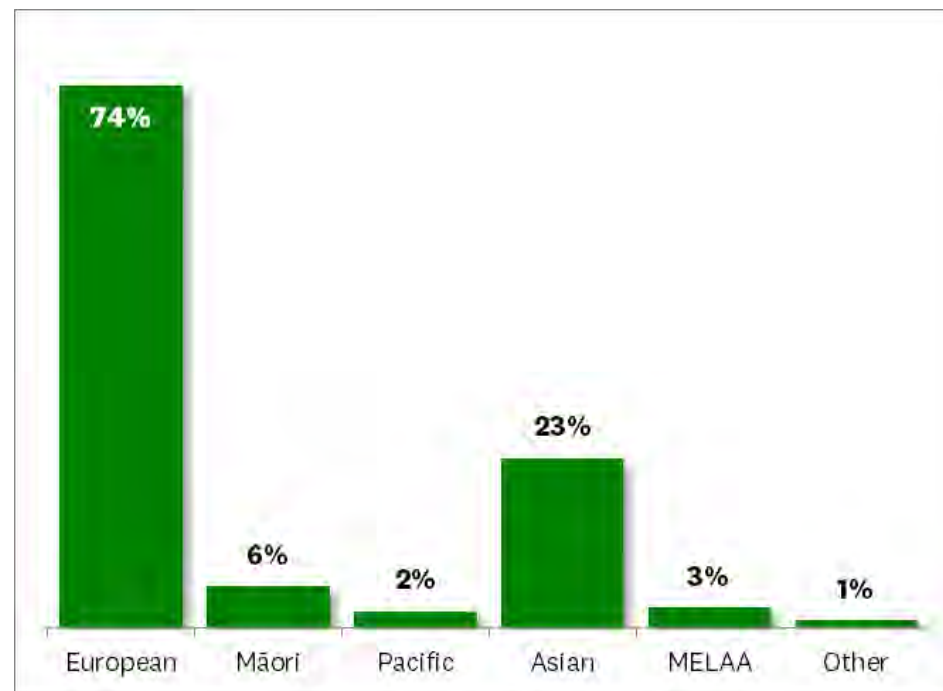
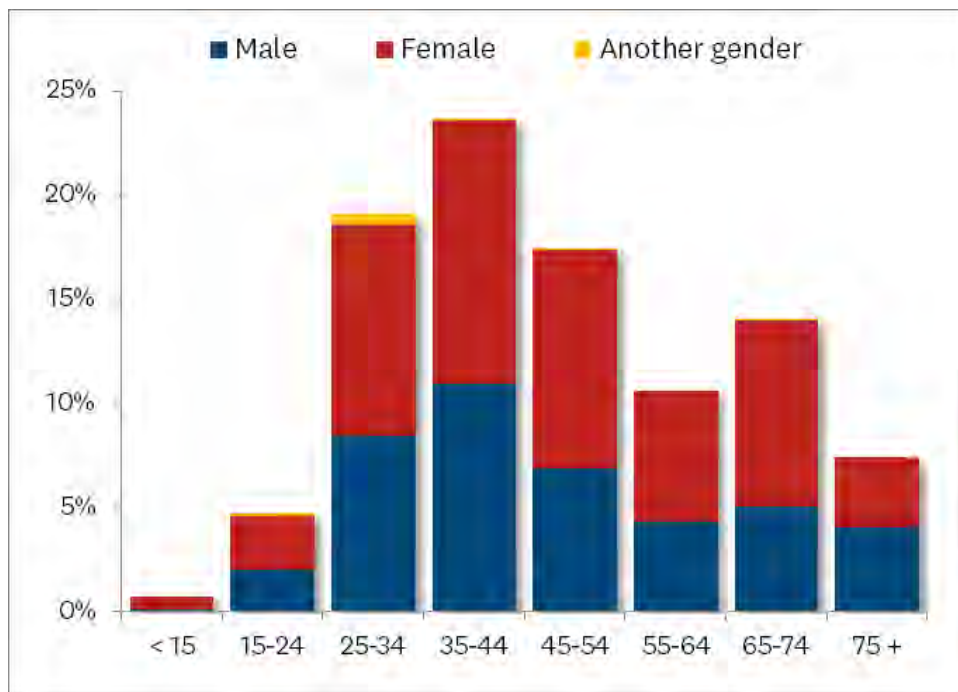
Feedback received

Out of 41,147 pieces of feedback received regionally, 2,135 were from people living in the Kaipātiki Local Board area.



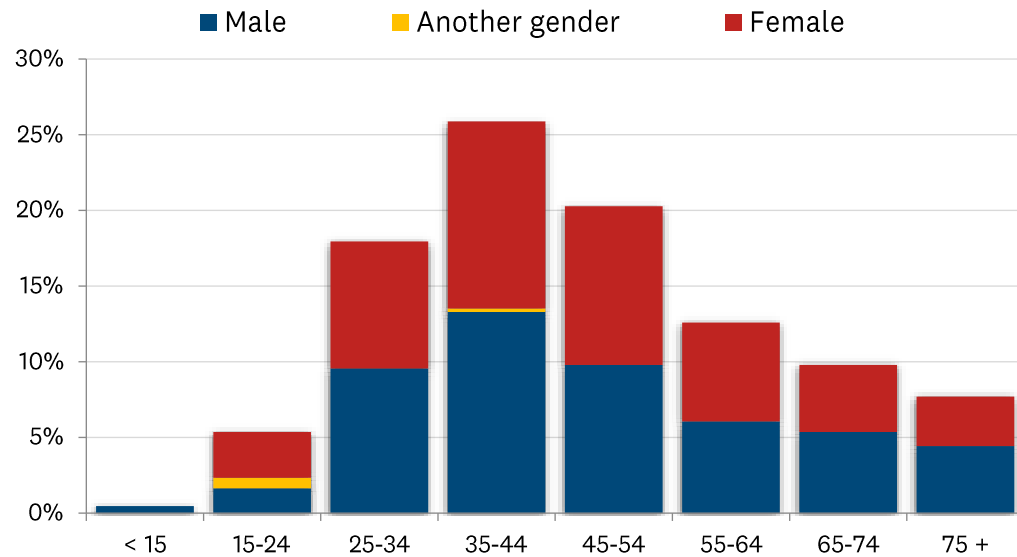
Information on submitters

The tables and graphs below indicate what demographic categories people identified with. This information only relates to those submitters who provided demographic information.

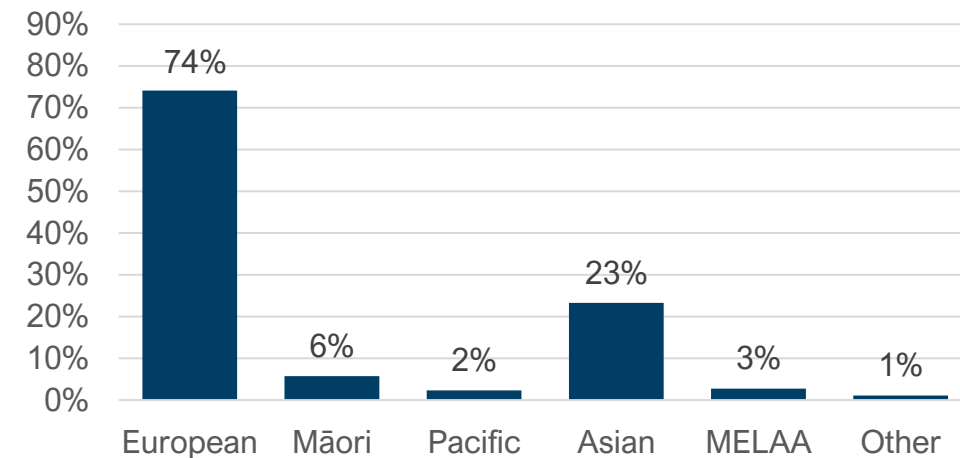
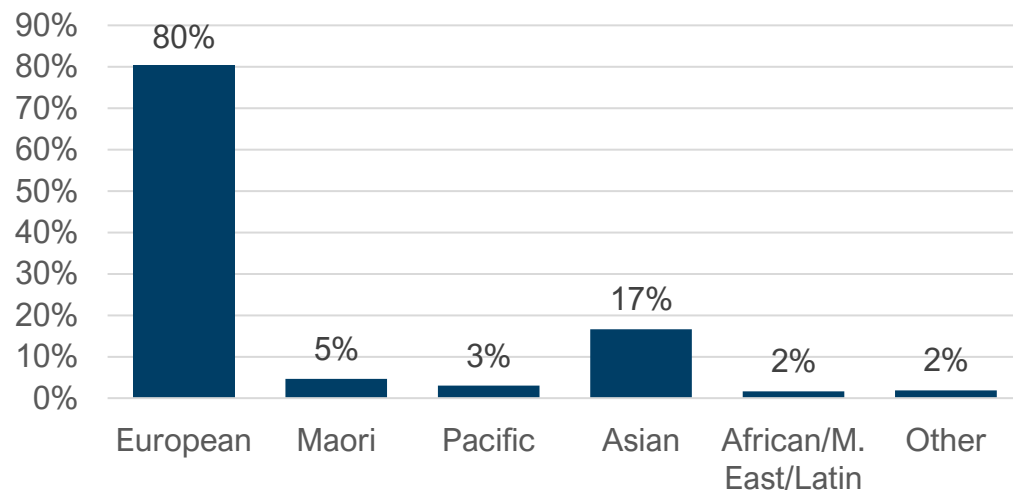
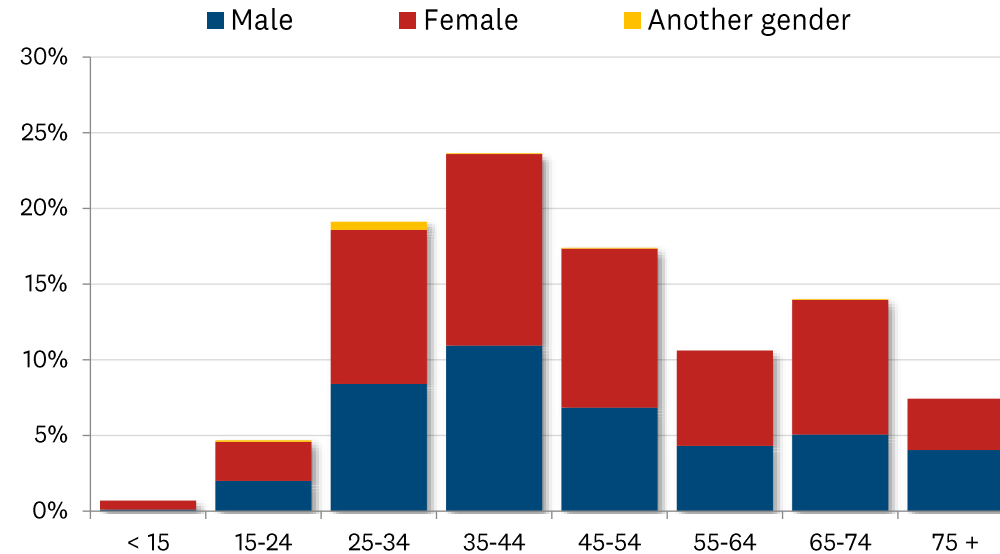


Information on submitters – Annual Budget 2022/23 compared to Annual Budget 2023/24

Annual Budget 2022-2023



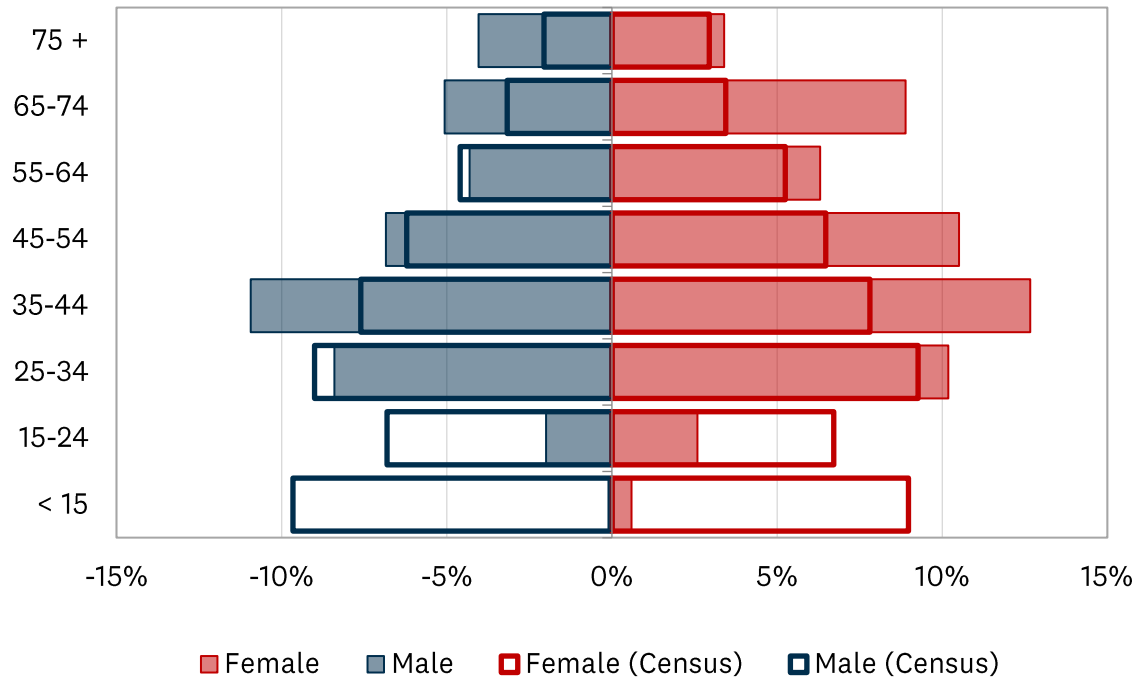
Annual Budget 2023-2024



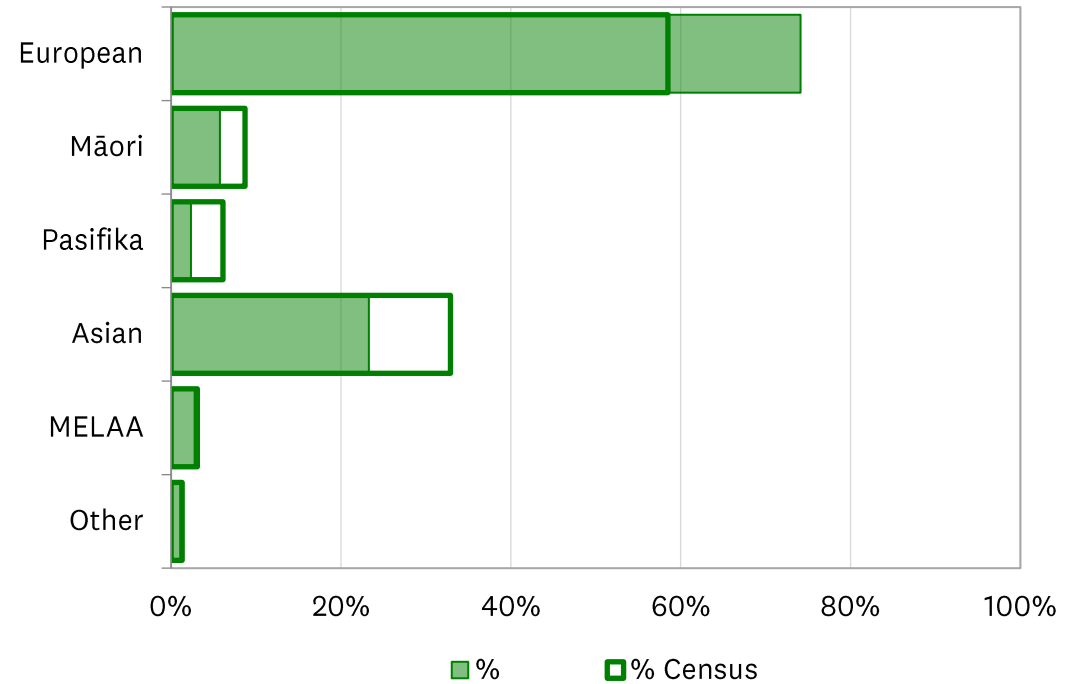
Information on submitters

How representative are the submitters to the Kaipātiki Local Board population?

Gender – submitters against census



Ethnicity – submitters against census



Organisations*		
Birkenhead Residents Association	Volunteering Auckland	Auckland Bands' Association Inc
Offgrid Studios	Citizens' Advice Bureau, Glenfield Branch	Asian Family Services
Hearts and Minds NZ	Highbury Community House Incorporated	The Royal New Zealand Plunket Trust
Harmonious Events	All Saints Birkenhead Scout Group	Belong Aotearoa
Youthtown	Friends of Shepherds Park	Takapuna District Cricket Club
Art Yoga	North Harbour Sports Council	Beach Haven Playcentre
Tuilaepa Youth Mentoring Service	Marlborough Park Tennis Club	Netball North Harbour
Volunteering Auckland	Pest Free Kaipatiki	North Shore Budget Service
Men's Shed North Shore Trust	Kaipatiki Project	Auckland North Community and Development
Rawene Centre	Auckland Historical Society	Mairangi Players Inc
Church Council of the Onewa Christian Community	Northcote Town Centre	Squash Auckland
Shepherds Park Squash Club Inc	Kaipatiki Community Facilities Trust	Glenfield Community Centre

**Final list of organisations to be confirmed.*



Mana Whenua Submissions

Thirteen of the nineteen mana whenua entities responded to the proposals for the Annual Budget 2023/2024

- Ngāti Pāoa Trust Board
- Ngaati Whanaunga Incorporated Society
- Ngāti Tamaoho Settlement Trust
- Ngāti Tamaterā Treaty Settlement Trust
- Te Ahiwaru Trust
- Te Runanga o Ngāti Whātua
- Ngāti Manuhiri Settlement Trust
- Te Kawerau Iwi Settlement Trust
- Te Akitai Waiohua Settlement Trust
- Te Whakakitenga o Waikato Incorporated
- Ngāti Rehua – Ngātiwai Ki Aotea Trust
- Ngātiwai Trust Board
- Te Ara Rangatū o te Iwi Ngāti Te Ata - Waiohua



Consultation feedback received on the Kaipātiki Local Board priorities for 2023/2024 and advocacy initiatives



Local board priorities

Kaipātiki Local Board consulted on the following priorities.

Our key priorities in your Local Board Area in 2023/2024

- *supporting our local community organisations, within available budgets, to deliver services that meet the needs of our community*
- *supporting our environmental groups, within available budgets, to deliver pest reduction and other initiatives to improve the natural environment*
- *continuing delivery of our extensive track upgrade programme to improve the user experience and protect our kauri against dieback disease*
- *working with council staff and community groups to address the flooding and seawater inundation at Little Shoal Bay by implementing the shoreline adaptation plan actions*

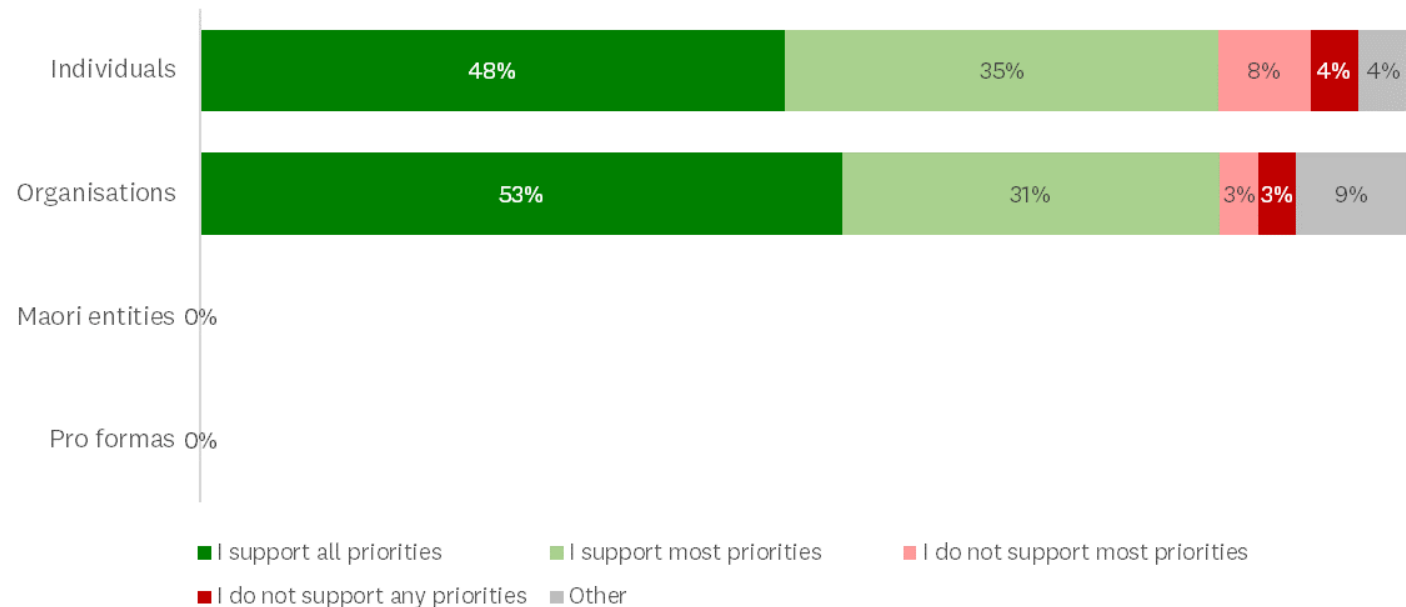


Local board priorities

Kaipātiki Local Board consulted on their local board priorities and received.

Count	I support all priorities	I support most priorities	I do not support most priorities	I do not support any priorities	Other	Don't know	Total
Individuals	828	614	131	68	71	18	1730
Organisations	17	10	1	1	3	0	32
Maori entities	0	0	0	0	0	0	0
Pro formas	0	0	0	0	0	0	0

- 1730 individuals and 32 organisations submitted on the local board priorities
- The majority of submitters 'supported all' of the local board priorities.





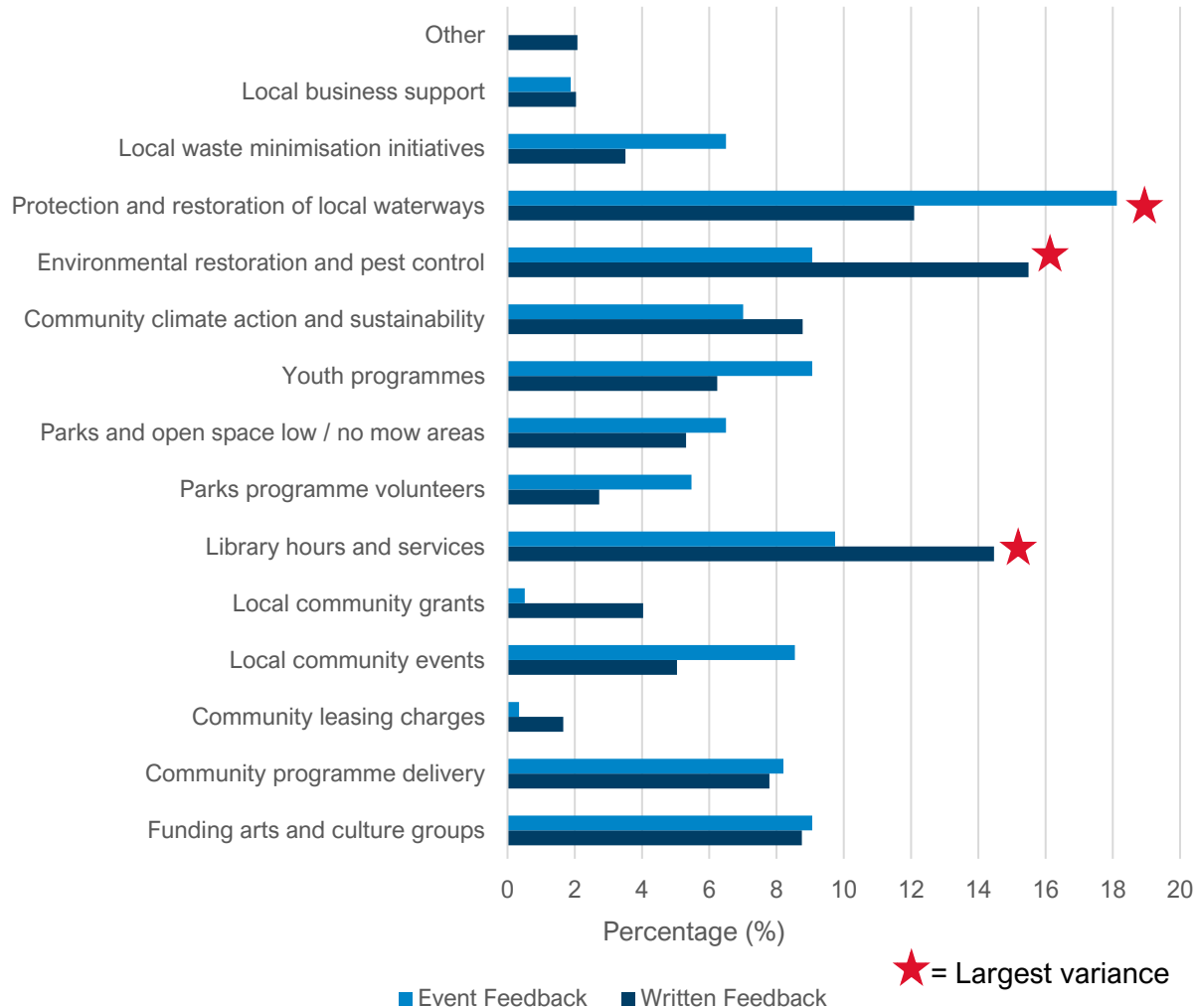
Responding to the budget challenge

Kaipātiki Local Board consulted on the following list of activities and asked which three services were **the most important** to retain funding for and which three they were prepared to **discontinue to reduce funding towards**

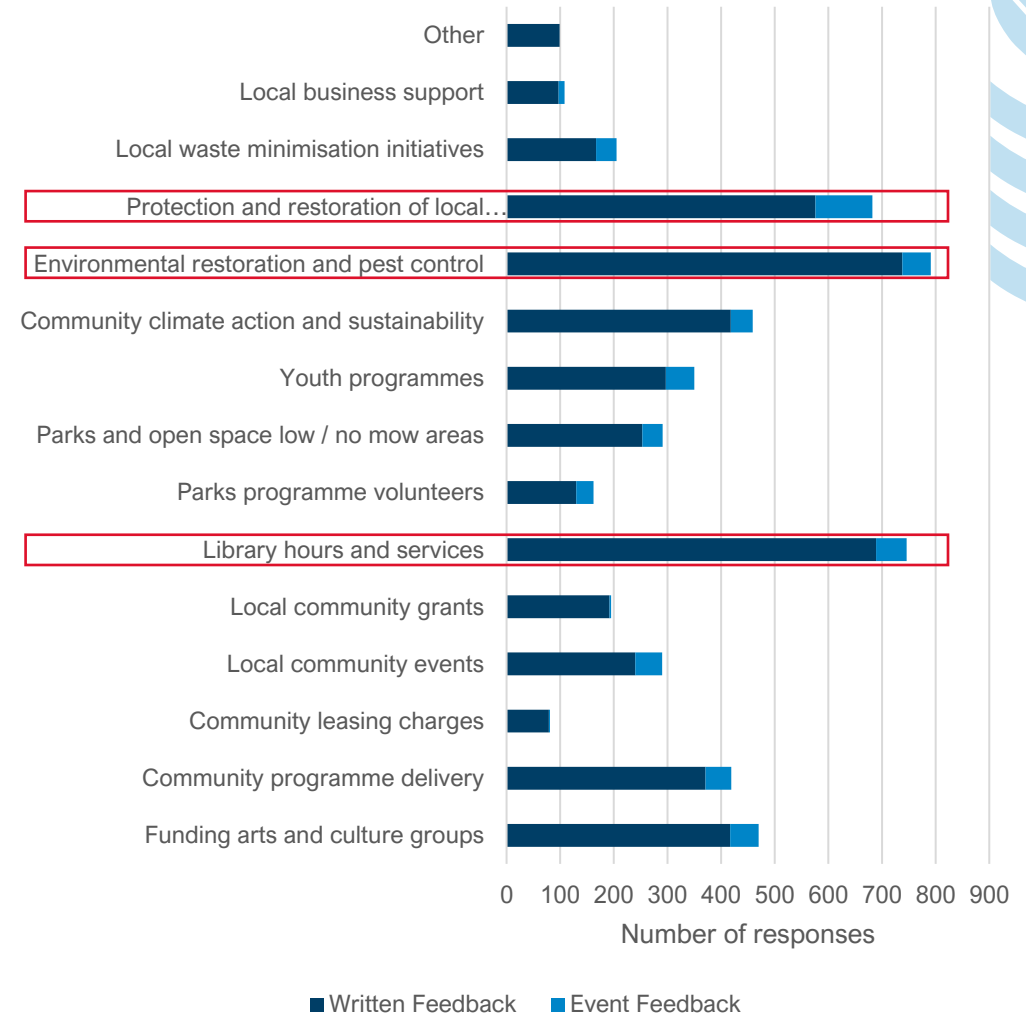
Activity	
Local Community Services	
Arts and Culture	Community Leasing Charges
Community delivery/programmes	Events
Grants	Library opening hours and services
Parks – volunteers	Parks and open space management – no mow
Youth	
Local Environmental Management	
Community climate action and sustainability	Environmental restoration and pest control
Water quality	Waste minimisation
Local Planning and Development	
Business support	

The three most important priority areas:

Which three of our services do you not want to reduce funding for?



Which three of our services do you not want to reduce funding for?



The three most important priority areas:

Individuals

- Environmental restoration and pest control (16%)
- Library hours and services (15%)
- Protection and restoration of local waterways (12%)

Organisations

- Community programme delivery (17%)
- Local community grants (16%)
- Community leasing charges (13%)





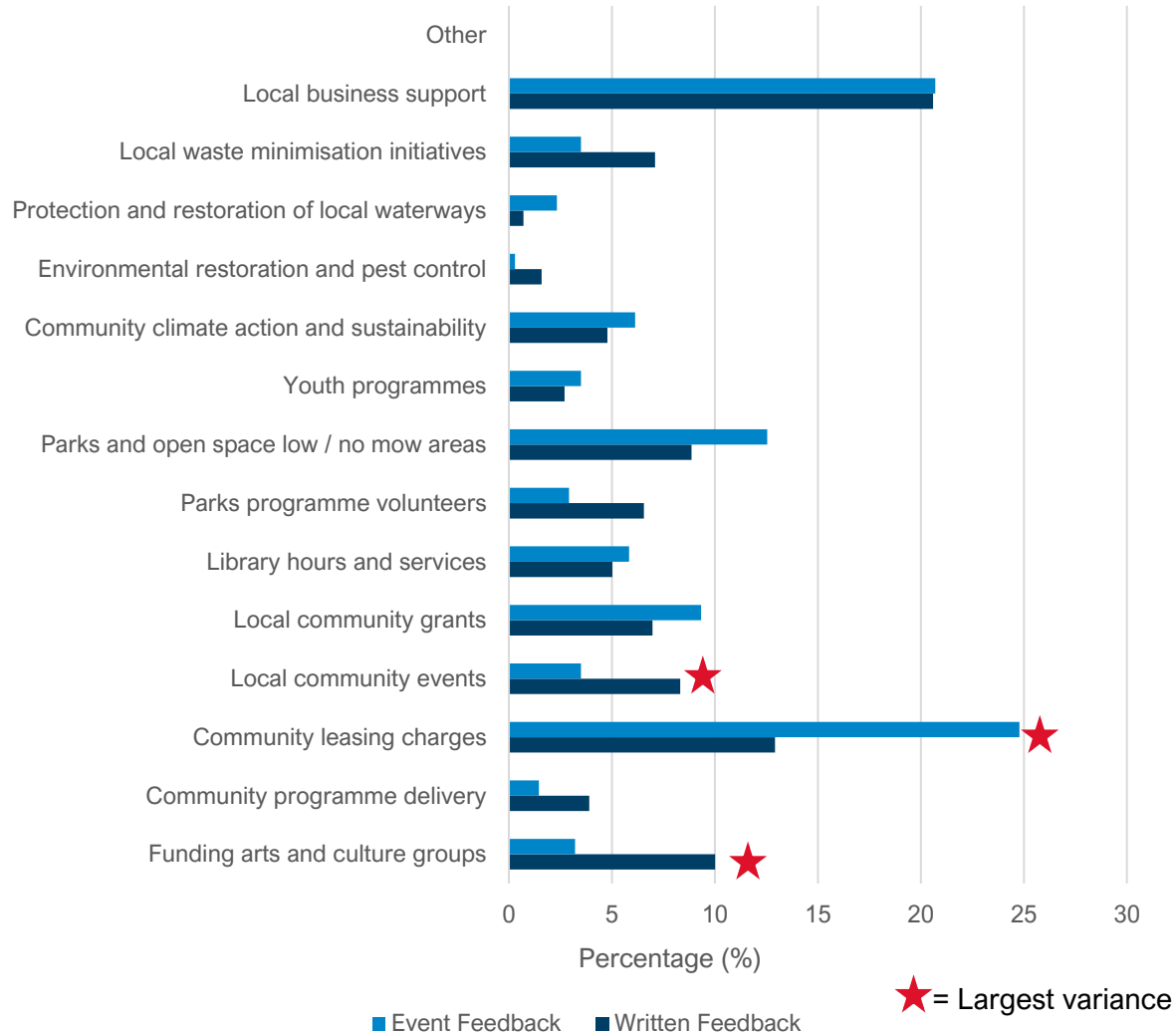
Key Themes on why the identified priorities were so important

- Strong support for activities that support future sustainability of the environment and mitigation against climate change
- More recent concerns around the January Auckland flooding event and the connection to views around the need to improve stormwater infrastructure and resilience to future flooding events
- Importance of activities which provide for social connection, belonging and mental wellbeing
- The belief that the activities were essential core services of council and therefore keystones for the community
- Support for those activities that provide best value and greatest return on investment
- Views that priority should be given to those activities where a reduction in funding would cost more in the long-term i.e. pest control

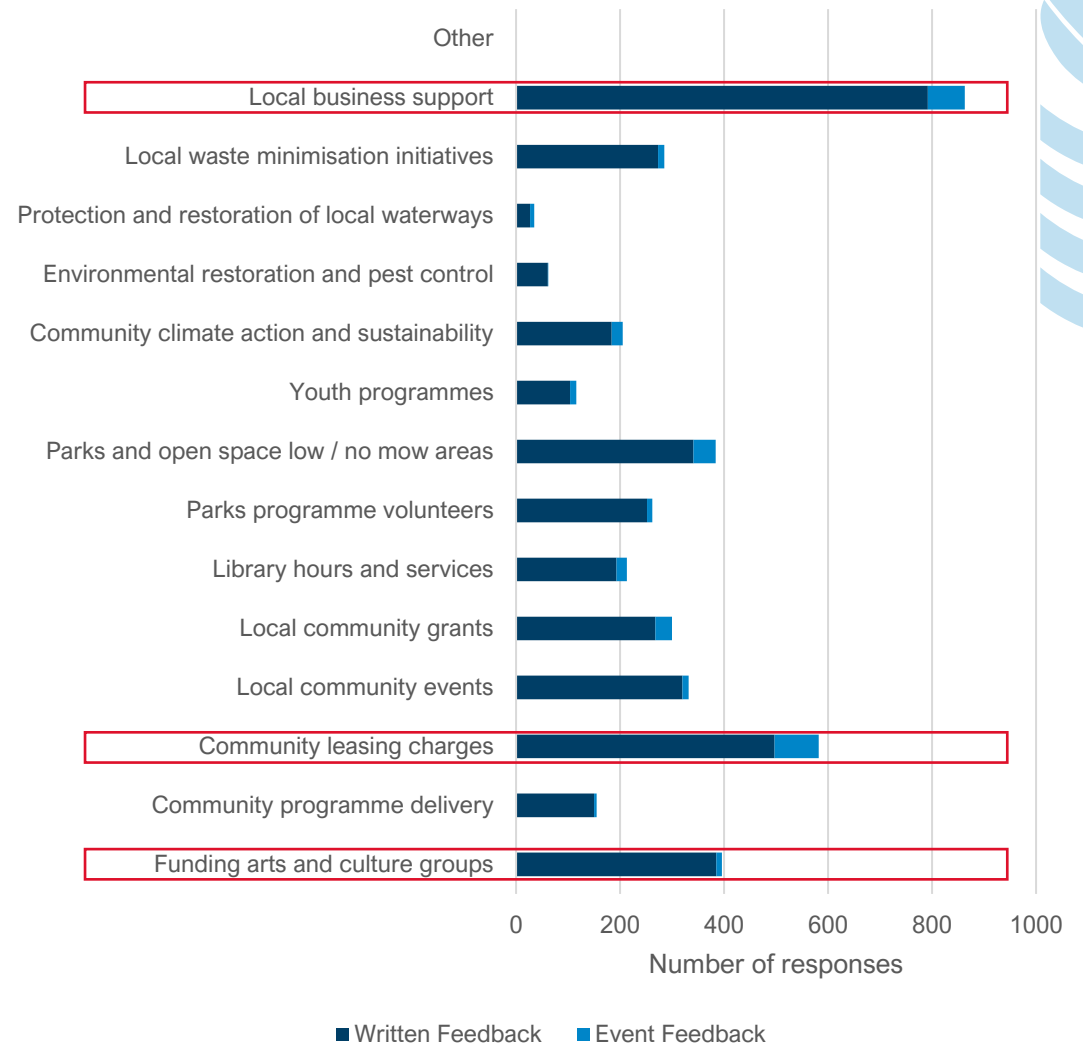


The three activities that individuals/organisations were prepared to have reduced funding or increased fees:

Which three services would you be prepared to reduce funding for?



Which three services would you be prepared to reduce funding for?



The three activities that individuals/organisations were prepared to have reduced funding or increased fees:

Individuals

- Local business support (17%)
- Community leasing charges (11%)
 - Funding arts and community groups (8%)

Organisations

- Local business support (13%)
- Parks and open space (low mow/no mow) (11%)
- Parks programme volunteers (7%) and community leasing charges (7%)



**Topic 2:
Consultation
feedback received on
regional topics in the
proposed Annual
Budget 2023/2024**



Annual Budget 2023/2024: regional topic

The proposed Annual Budget 2023/2024 sets out Auckland Council's priorities and how to pay for them. Submitters were asked to respond to five key questions on regional topics outlined below:

- 1. Operating spending reductions**
- 2. Amending Auckland International Airport Limited (AIAL) Shareholding Policy**
- 3. Managing rates and debt**
- 4. Storm response**
- 5. Changes to other rates, fees and charges**



1. Operating spending reductions

Aucklanders were asked for feedback on a proposal to save \$125 million through reductions including:

- maintaining the current reduced number of public transport services for 2023/2024 to save \$21 million
- reducing funding to Tātaki Auckland Unlimited to save a further \$27.5 million with effects on service delivery (including economic development and tourism promotion) and pricing at venues it manages such as Auckland Zoo, Auckland Art Gallery and stadiums
- reducing regional services such as community and education programmes, arts and culture programmes, regional events, economic development and other social services activities such as homelessness funding, community empowerment and funding for youth centres to save \$20 million
- reducing local board funded activities across all boards to save \$16 million (feedback received on local impacts of the reduction is outlined in the 'Feedback received for the Kaipātiki Local Board for 2023/2024' section above)
- reducing contestable grants to save \$3 million
- no longer directly providing early childhood education services to save \$1 million.



The graphs below give an overview of the responses from Kaipātiki Local Board area

Q1 Operating spending reductions



Early Childhood Centres Proposal - Kauri Kids

- *Stopping this service will negatively impact the most vulnerable i.e. low income families*
- *Concern over the affordability of alternate providers and availability of spaces*
- *The centres are family orientated, community focused, inclusive safe and provide a community asset*
- *Kauri Kids provide hours that suit families at an affordable cost compared to private centres which provide a service*
- *Suggestions that the fees could be slightly increased to combat the cost*

Council-delivered Early Childhood Education Services



■ Do not support cuts to ECE services ■ Support cuts to ECE services



2. Amending Auckland International Airport Limited (AIAL) Shareholding Policy

Aucklanders were asked about a planned change to the AIAL Shareholding Policy which will allow the sale of some or all of Auckland Council's shares in AIAL. The proposal is to sell all the shareholding (currently around 18% of shares in Auckland Airport) which would reduce debt by around \$1.9 billion. This is projected to reduce interest costs by \$87 million per year.

The graphs below give an overview of the responses from Kaipātiki Local Board area.



Q2 – AIAL Shareholding Policy

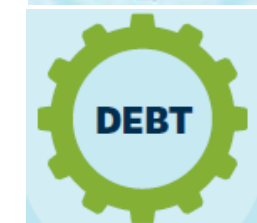


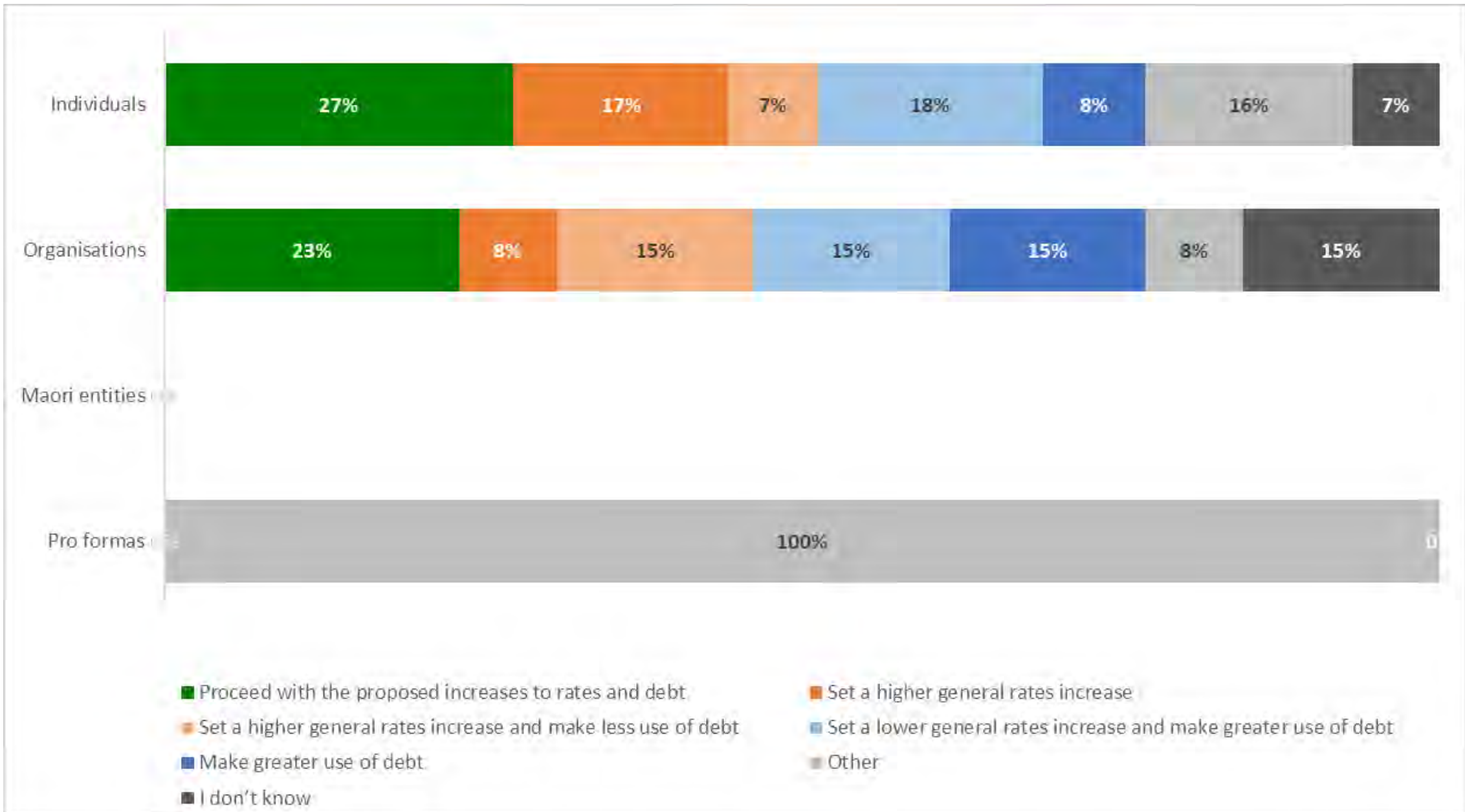
3. Managing rates and debt

Aucklanders were asked to provide feedback on a proposal of a total rates increase for the average value residential property of around 4.66 per cent or \$154 per year. This would be achieved through:

- an average increase in general rates of 7 per cent across all existing properties, including non-residential
- reducing the Natural Environment Targeted Rate (NETR) and Water Quality Targeted Rate (WQTR) by around two thirds and using the money already collected from these rates to continue delivering these work programmes as planned in 2023/2024
- pausing the long-term differential strategy (the split between business and residential rates) for one year.

Aucklanders were also asked about the proposal to increase council's use of debt by up to \$75 million in the 2023/2024 year. The proposal involves using the debt to fund some capital expenditure that is currently planned to be funded by operating revenue.





4. Storm response

Aucklanders were asked about a proposal to increase council's operating budgets by around \$20 million each year to improve the ability to prepare for and respond to future storms. This would likely require rates to increase for 2023/2024 by around an additional 1 per cent (on top of the 4.66 per cent increase proposed to address the budget shortfall).



Storm Events

A higher rates increase may now be required to enable us to better prepare for and respond to future storm events.



Storm Response Graph



5. changes to other rates, fees and charges

Aucklanders were asked for feedback on proposals to increase some targeted rates and other regulatory fees and charges as set out below. If the changes are not made, then general rates may need to be higher than proposed.

This includes re-prioritisation of additional bus service expenditure which was planned to be funded by the Climate Action Targeted Rate (CATR) and the following waste management rates changes

- A 10.6 per cent increase to the base rate and targeted rate charges for non-standard refuse bins (in the former Auckland (ACC) and Manukau (MCC) city council areas)
- introduction of a fee for swapping bin sizes
- extension of the food scraps targeted rate to the new areas that will receive the service this year.



Majority of individuals and organisations supported the waste management rates changes

Majority of individuals (69%) and organisations (50%) supported the swimming pool/spa pool fencing compliance targeted rate

48% of individuals and 33% of organisations supported change for which bus services that are funded by the Climate Action Targeted Rate



Other Issues

Feedback on any other issues, including:

- Tūpuna Maunga Authority Operational Plan **2023/2024**



Topic 3: Staff survey on Annual Budget



Context - the staff survey

Kaimahi in teams with people potentially impacted by Governing Body decision making on the Annual Budget 2023/2024, were asked for feedback on the following proposed Auckland Council operational cost savings :

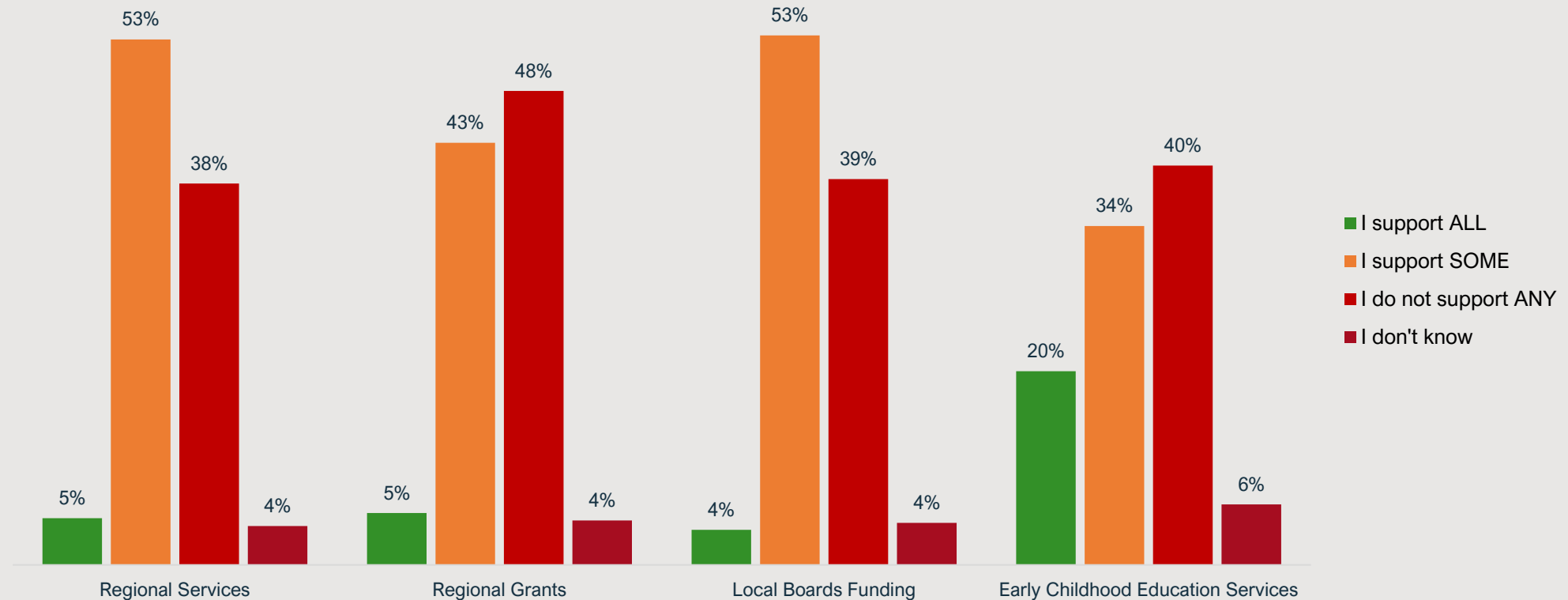
- \$20m reduction in general rates funding for regional services
- \$3m reduction in regional contestable grants
- \$16m reduction to local Board funding
- \$1m savings from withdrawing from the provision of early childhood education services.

The questions asked were:

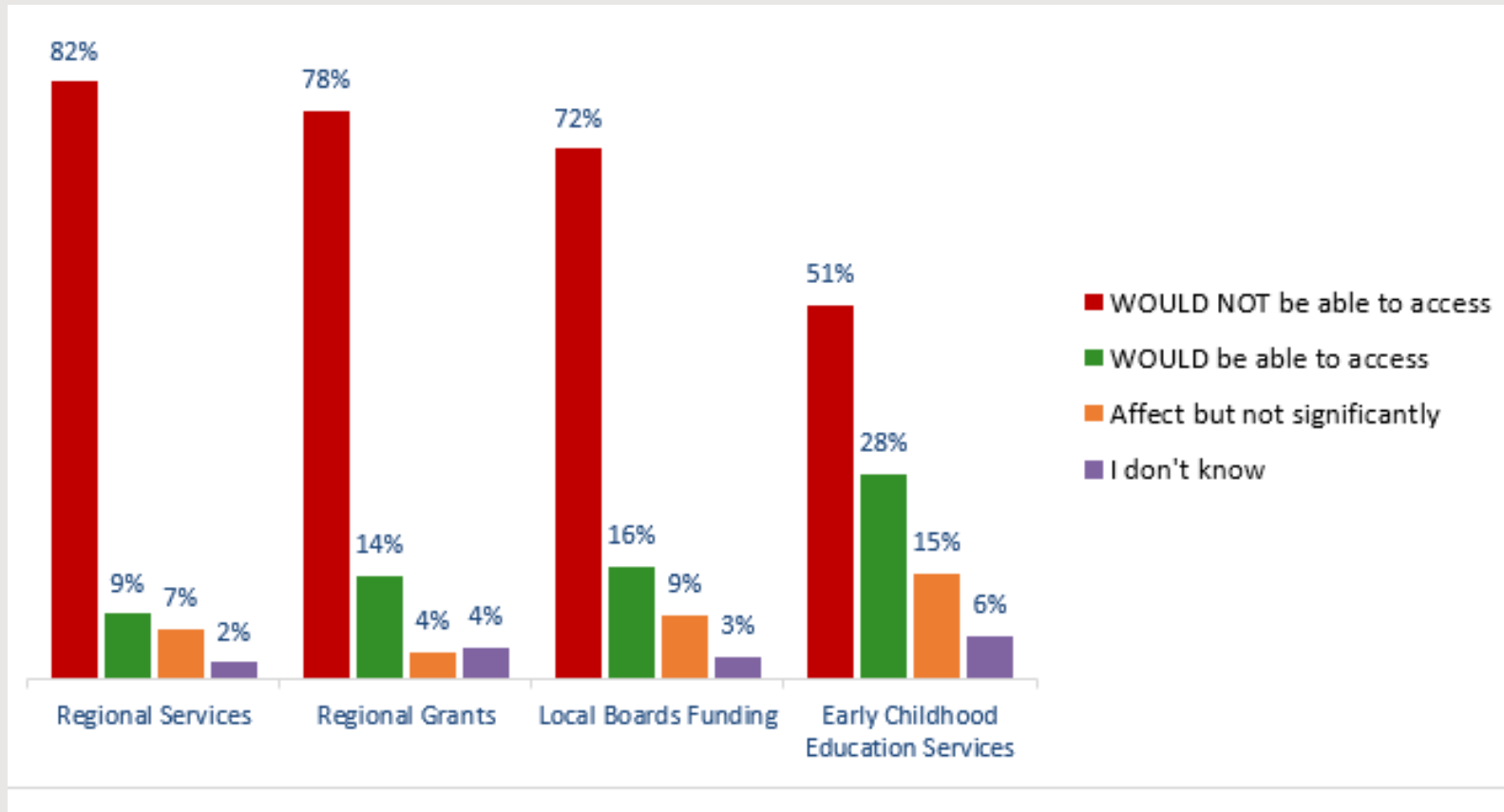
- As a team member or someone potentially impacted by the savings proposal, what do you think about the options to reduce our operating cost?
- As a team member or someone who delivers the affected activity, service or function, what do you think the impact for users would be if the proposed change went ahead?
- As a team member, or someone potentially impacted by the savings proposals, is there any other feedback you would like to provide about the proposal our for public consultation?



Summary of overall feedback: As a team member or someone potentially impacted by the savings proposal, what do you think about the options to reduce our operating cost?



Summary of overall feedback: As a team member or someone who delivers the affected activity, service or function, what do you think the impact for users would be if the proposed change went ahead?



Themed Comments

Regional Services

Regional Grants

Local Board Funding

Early Childhood Education Services



Topic 4: Advocacy



Local board advocacy

- Consider any initiatives to include as advocacy to Governing Body as part of the Annual Budget
- Take into account the consultation feedback above and Council's financial position.

Possible areas:

- *Local procurement*
- *OLI – Birkenhead War Memorial*
- *Northcote Town Centre Development – Community Hub, Town Square, Te Ara Awataha*



**Topic 5: local board
feedback on regional
topics in the Annual
Budget**



Kaipātiki Local Board input on regional topics in the Annual Budget 2023/2024

1. operating spending reductions
2. amending Auckland International Airport Limited (AIAL) Shareholding Policy
3. managing rates and debt
4. storm response
5. changes to other rates, fees and charges



Key steps: local board input on regional topics in the Annual Budget 2023/2024

**Consider
consultation
feedback
(today)**

**Resolve your
input on regional
topics
(10 May)**

**Present to
Finance and
Performance
Committee
(17 May)**



Kaipātiki Local Board

Input into the Annual Budget 2023/2024

Presenter: 

Governing Body workshop 17 May 2023



LB feedback on Proposed Annual Budget Regional Topics

Topic	Proposal	Support / Do not support
Operating spending reductions	Maintaining the currently reduced number of public transport services (as of December 2022) for 2023/2024 to save \$21 million	Support / Do not support
	Reducing funding to Tātaki Auckland Unlimited to save a further \$27.5 million,	Support / Do not support
	Reducing regional services to save \$20 million	Support / Do not support
	Reducing local board funded activities across all boards to save \$16 million	Support / Do not support
	Reducing regional contestable grants to save \$3 million	Support / Do not support
	No longer directly providing early childhood education services to save \$1 million	Support / Do not support



LB feedback on Proposed Annual Budget Regional Topics

Topic	Proposal	Support / Do not support
Amending Auckland International Airport Limited Shareholding Policy	To sell Auckland Council's shares in AIAL	Support / Do not support
Managing rates and debt	To increase rates by 4.66 percent.	Support / Do not support
	To increase debt by \$75 million	Support / Do not support
	To reduce Natural Environment and Water Quality Targeted Rates.	Support / Do not support
Storm response	To increase rates by an additional 1 per cent to fund a storm response fund	Support / Do not support



Additional feedback

- Add any additional feedback here (particularly areas on do not support)





Tāmaki Makaurau Auckland FIFA Women's World Cup 2023 Host City Programme



**Business and community workshop
May 2023**

aucklandunlimited.com

100 Days to go

- Celebrated on 11 April across both host countries and all host cities.
- FIFA's final ticket phase and marketing campaign live.
- Looking forward to the activity in the countdown now to kick-off on 20 July at Eden Park.



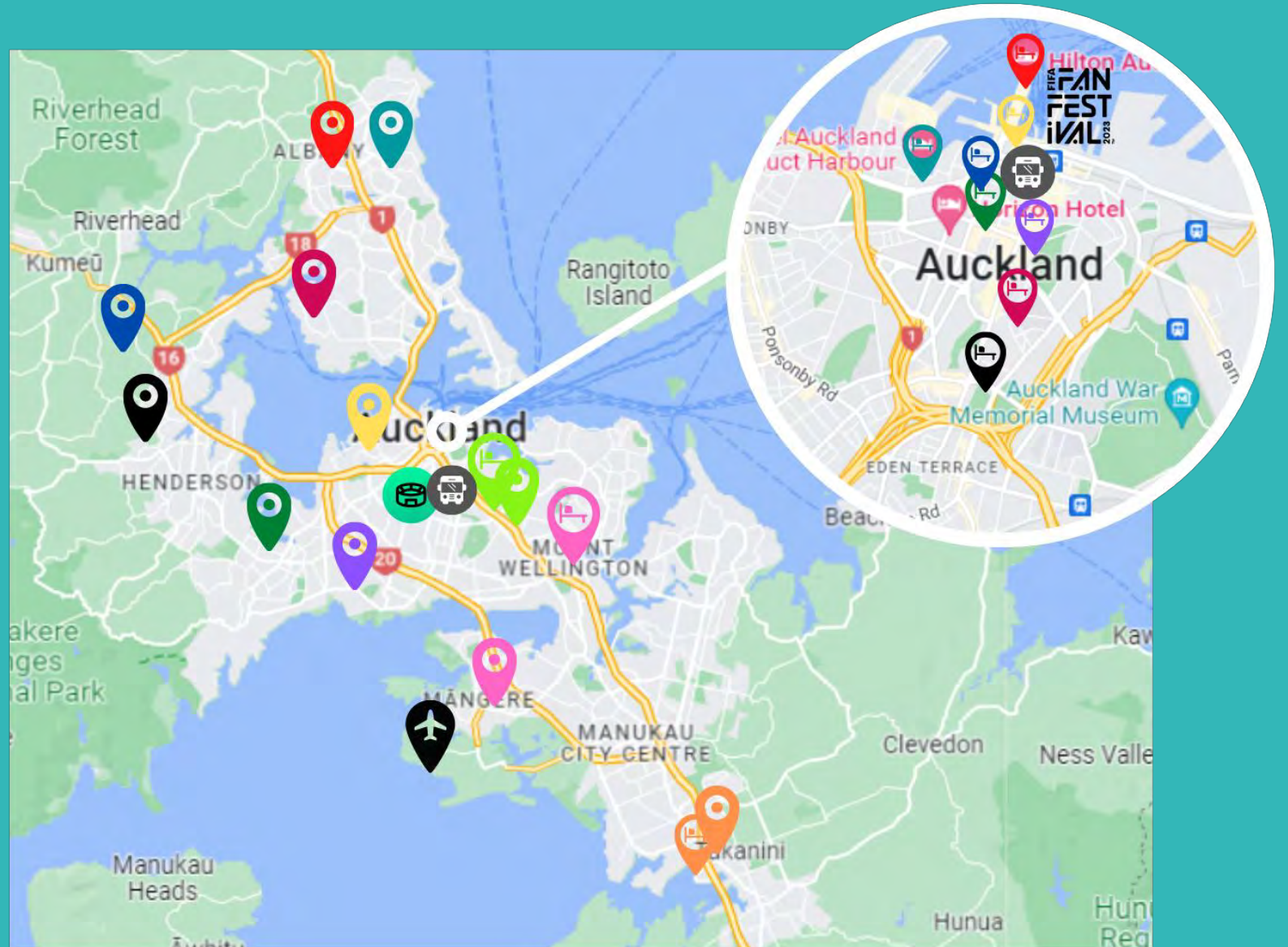
What we will cover

- Event re-cap
- Training venue update
- Community engagement
- Match Ready toolkit
- Questions



Tournament footprint – region-wide major event

- **9 matches** – including the opening match on 20 July and a semi-final at **Eden Park**
- **8 Team Base Camp Training Sites** paired to **8 Team Base Camp hotels**
- **2 Venue-Specific Training Sites** and Hotels
- **FIFA Fan Festival** (The Cloud)
- **Transport hubs:**
 - Auckland International Airport
 - Train stations – Britomart/Kingsland
- **Host City events and activations** – multiple other sites



Forecast benefits & outcomes for Tāmaki Makaurau Auckland

- \$60M in regional GDP
- 130,000 visitor nights
- Global broadcast reach of 1.12b+
- Legacy outcomes, including upgrades to 11 training venues
- Increases liveability and social benefits
- Bolstering Auckland's global host city reputation and workforce



Training venue update

FIFA Women's World Cup 2023



Training venues

Completion of the training venue programme to meet FIFA requirements and achieve gender neutral legacy outcomes, including:

- Lighting upgrades
- Pitch compliance
- Changing room and club room upgrades



Shepherds Park – status update

Lighting	Complete – complies with FIFA requirements.
Field	Grow-in phase - Will allow a couple of community games pre-tournament.
Clubroom	70% Complete - 9 June estimated completion date. Now working six days a week to complete programme.
Other	Path upgrades to be complete by 9 June.



Shepherds Park

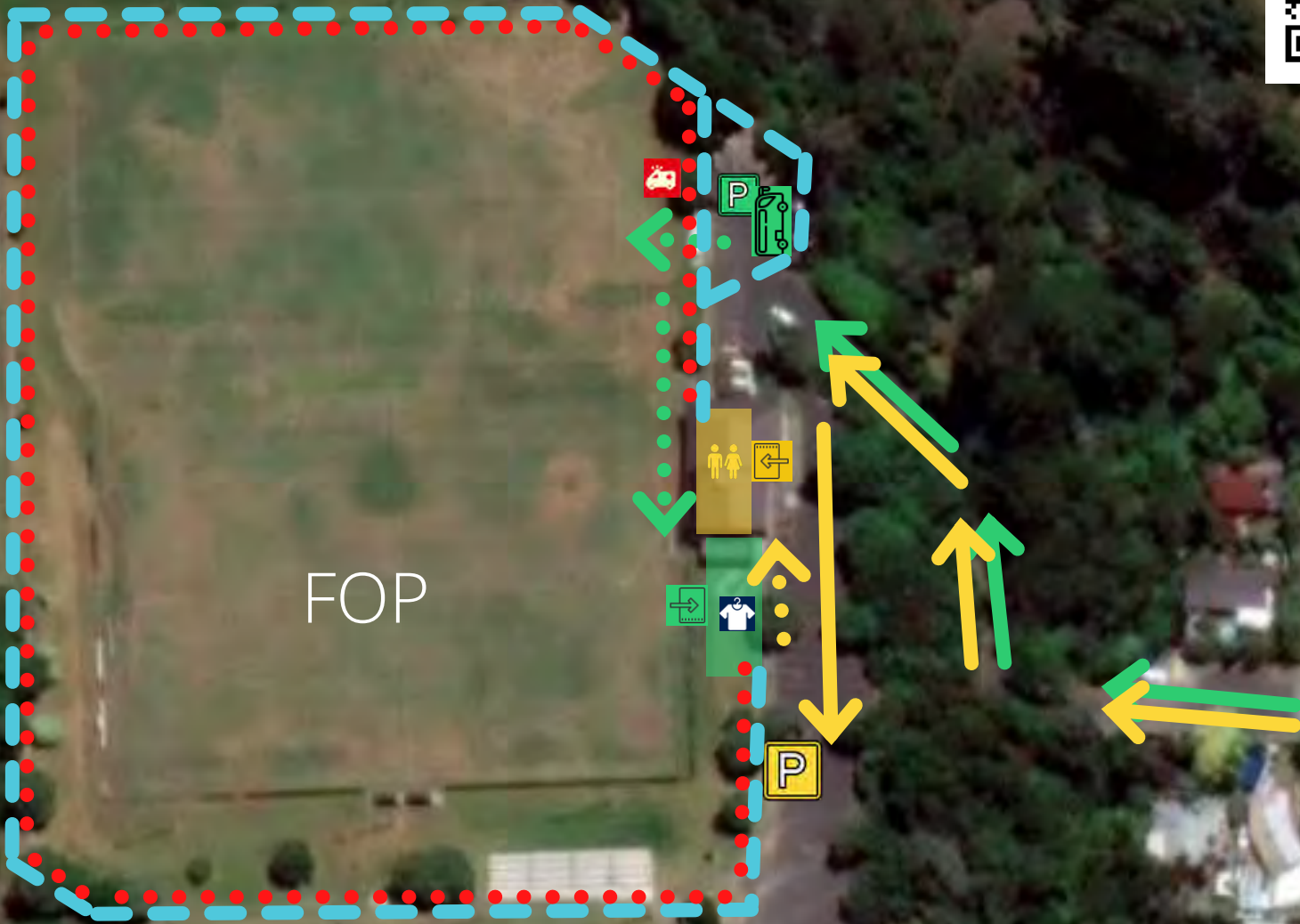
Shepherds Park– key dates

- **15 May 2023**
Council start fencing training venues and building filming towers
- **22 June**
FIFA pitch protection period commences –
no community use of the field from this point
- **6 July 2023**
FIFA have exclusive use of clubrooms and field
- **17 July 2023**
Italy start using base camp training venue (from ‘match day minus 7’ at present)
- **4 August 2023**
End of group stage – FIFA expected to release most/all base camp training venues back for
community use (at their discretion)

Shepherds Park – additional notes

- Provisional pre-tournament training venue: Kristin School from 7 July
- We have received DoC Minister approval for exclusive use of a portion of the Park Reserve for duration of the tournament.
- Will require TMP on Melba St (and possibly Paragon Ave) to allow player bus access.
- Through the capital investment into club venue upgrades there is a requirement for each club to develop and report on the implementation of an Equity Charter with Northern Region Football. The Charter principles will cover governance and operational equity objectives, including but not limited to:
 - Female representation on Club Committees/Boards.
 - Governance representation that aligns with community diversity.
 - Females receive equal support and provision from clubs in respect to training equipment, team gear, coach experience/qualifications, food, travel, sponsorship, etc
 - Equal representation of gender and race in imagery across website, social media & other club collateral
- Now we have indicative site plans (next slide) and team arrival dates from FIFA we will sit down with all key park users to discuss and work through any operational impacts/concerns, notably:
Beach Haven Bowling Club, Beach Haven Community House, Beach Haven Tennis Club, Shepherds Park Squash Club, Kauri Kids, Friends of Shepherds Park.
- Aware of high general public use/access through park. Provisionally, intent to notify general public users about impact via signage, leaf drop to neighbours, and social media.

ITA



SHEPHERDS PARK
AUCKLAND/TĀMAKI MAKAURAU, NZ
TEAM BASE CAMP
TRAINING SITE (TBCTS)

COMPETITIONS / TEAM

- AREA / ZONE: [Green bar] PLAYER ENTRANCE: [Green gate icon]
- DRIVEWAY / ACCESS VEHICLES: [Green arrow]
- WALKWAY / ACCESS PEDESTRIAN: [Green dotted arrow]
- DRESSING ROOMS: [Blue shirt icon] AMBULANCE: [Red ambulance icon]
- TEAM BUS: [Green bus icon] PARKING: [Green P icon]

MEDIA / GUESTS

- AREA / ZONE: [Yellow bar] MEDIA / GUEST ENTRANCE: [Yellow gate icon]
- DRIVEWAY / ACCESS VEHICLES: [Yellow arrow]
- WALKWAY / ACCESS PEDESTRIAN: [Yellow dotted arrow]
- PARKING: [Yellow P icon] TOILET (INC ACCESSIBLE): [Yellow person icon]

OUTER / INNER PERIMETER FENCE: [Blue dashed line]

FIELD OF PLAY FENCE: [Purple dashed line]

VIEW OBSTRUCTING SCRIM: [Red dotted line]



Community Engagement

FIFA Women's World Cup 2023



Trophy Tour

- Auckland will be the first host city to kick off the Trophy Tour from 2-4 June.
- The Trophy Tour will act as a tool to help get people in the World Cup spirit in both central Auckland and the regions.
- The Trophy Tour will see activations in multiple locations across Auckland during King's Birthday Weekend – including match venue Eden Park.



School engagement

FIFA SCHOOLS PROGRAMME – launches in May

- An interactive student-facing hub for Years 1-8.

NZ FOOTBALL SCHOOLS PROGRAMME – from Term 2

- Kōtuitui is available to primary and intermediate schools and kura across Aotearoa New Zealand to deliver during either Term 2, 3 or 4.

YOUTH SYMPOSIUM – 20 June

- Youth conference for 14-18 year olds on menstruation through the lenses of Te Ao Māori worldview, sustainability, sport and wellbeing, diversity and inclusions

FIFA FAN FESTIVAL – 20 July to 20 August

- FIFA Fan Festival excursion opportunity for primary schools.



Multicultural engagement

- A record-breaking 32 teams participating the tournament.
- This presents a huge opportunity to authentically connect these culturally and linguistically diverse audiences.
- FIFA are currently inducting community leaders in host cities who represent each team culture, and have a position of leadership within their cultural community.
- FIFA led Adopt-A-Team initiative – launching late May.



Team engagement opportunities

- A team engagement programme is being developed with FIFA
- Noting the teams main focus while here will on being competitive, therefore time will be limited.



FIFA Fan Festival

- Running from 20 July to 20 August at The Cloud on Queens Wharf.
- The place to experience a festival in football, music, entertainment, food, and matches on the big screen.
- Cultural activations and school programme.
- Open on match days: weekdays 12pm – 11pm/weekends 10am – 11pm.
- A clean zone will be activated on match days.



Match Ready

FIFA Women's World Cup 2023



Objectives of Match Ready

- Inform businesses about the **benefits of hosting** the FIFA Women's World Cup 2023 and how they can leverage these in effective, and compliant ways.
- Support Aucklanders and businesses with the **tools they need** to provide a welcoming, inclusive, high-quality experience to visitors.
- Reinforce the Auckland FIFA Women's World Cup 2023 **local and domestic marketing** campaign.

What does it include?

The Match Ready online toolkit launches mid-May and includes:

- About the event: Auckland's hosting and delivery
- How to watch and participate
- How to get your business 'Match Ready'
- Compliant business and venue dressing options
- Traffic and transport information
- Information about sustainability for businesses
- Latest tournament and host city news

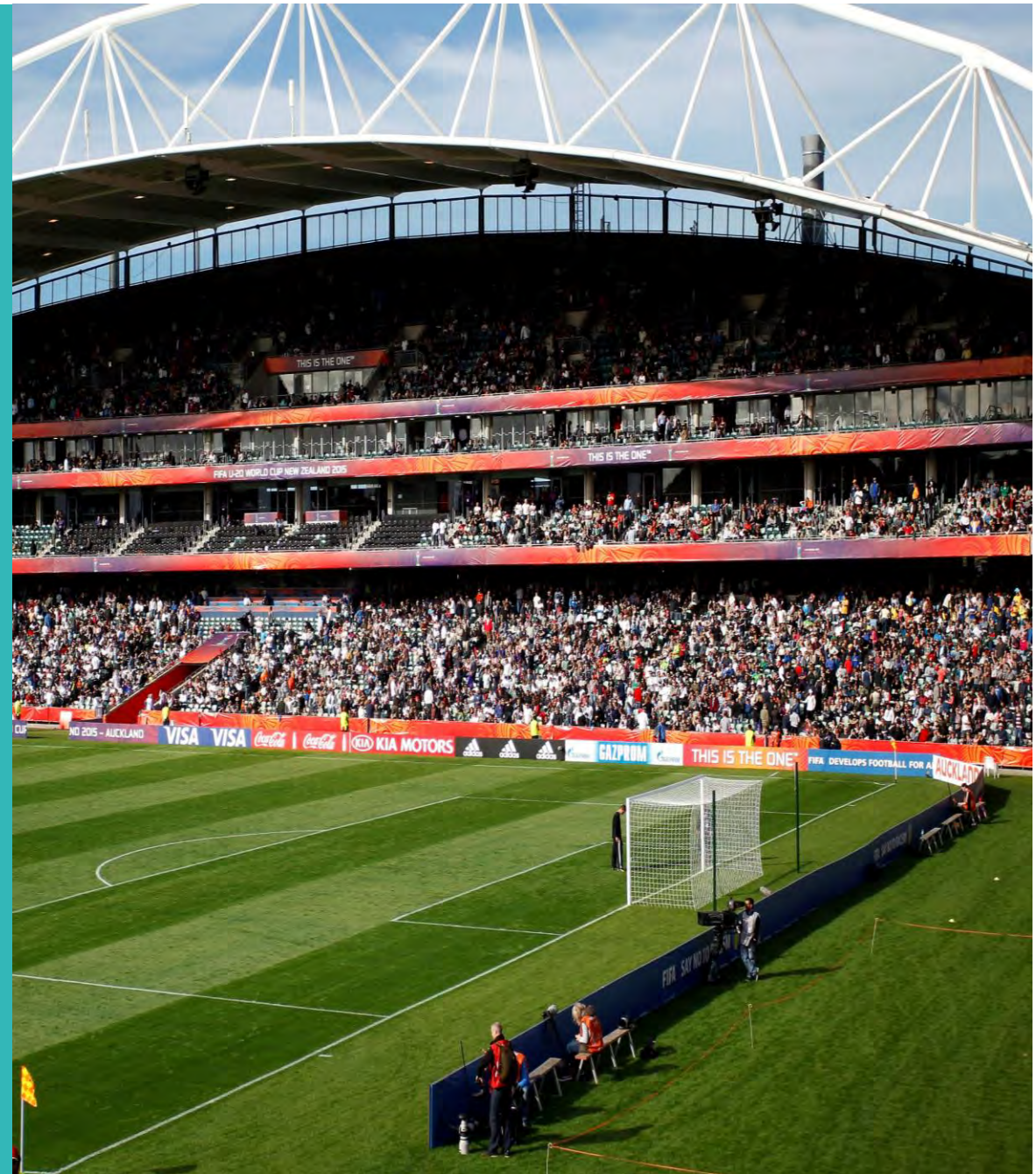
Commercial rights

- The FIFA Women's World Cup 2023 has been declared a major event under the Major Events Management Act (MEMA) 2007.
- There are rules businesses need to know to ensure they can benefit, while working within the restrictions of the act.
- Under the act, you can not suggest that any persons, brands, goods or services have an association with a major event when they do not.
- Ministry of Business, Innovation and Employment (MBIE) has a full guide online to provide guidance for businesses.



Clean Zones & Clean Transport Routes

- Applies to zones around Eden Park and to the FIFA Fan Festival on match days.
- Restrictions will not affect "business as usual" activities.
- If any new business activity during the Tournament - or someone else has asked your permission to do something - then restrictions do apply.
- As well as the restrictions put in place by the MEMA, the rules of the district plan and bylaws continue to apply as normal.



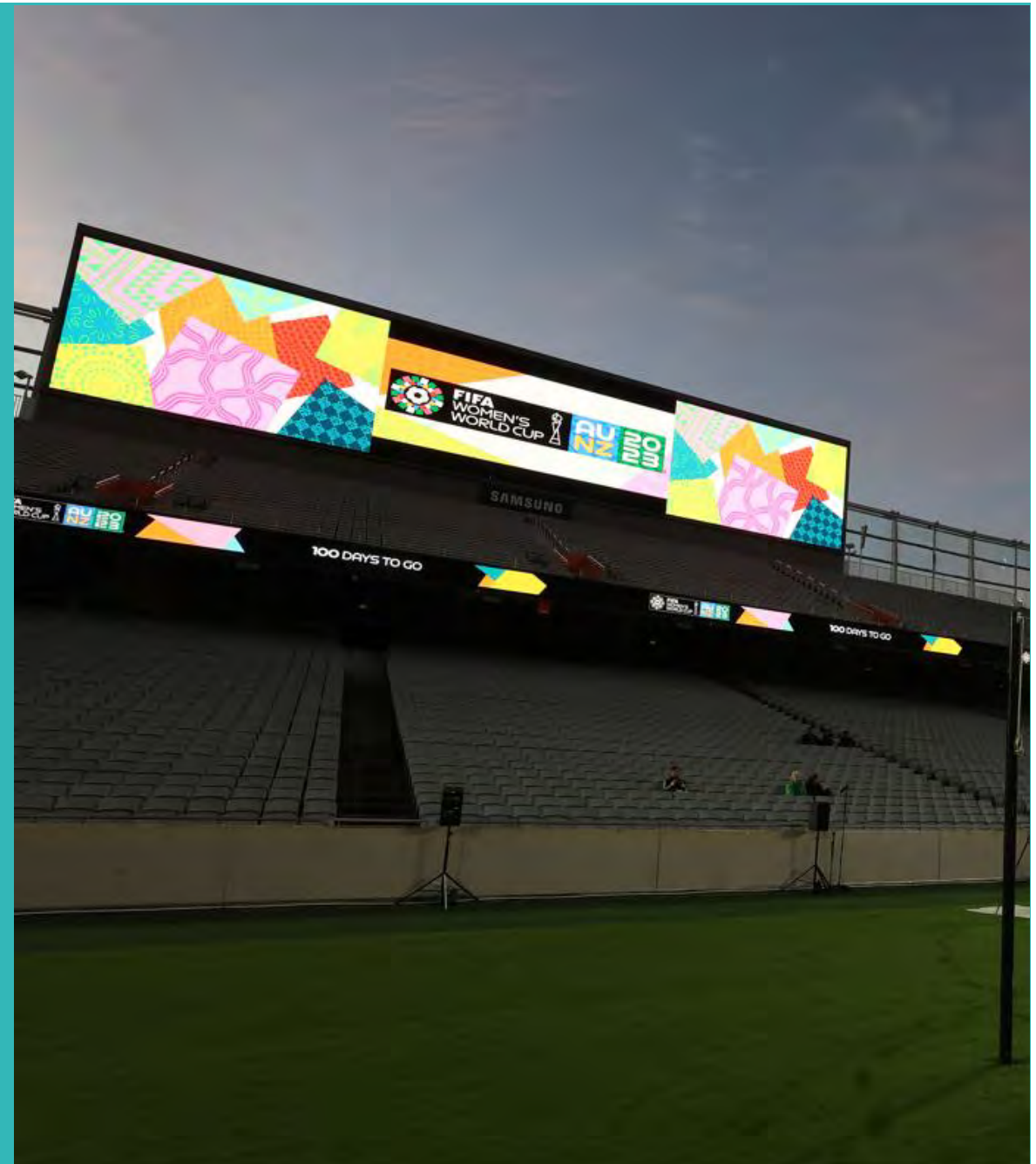
Protected words & emblems

To avoid unauthorised association with the event, there are words and emblems which are protected:

WORDS

- Beyond Greatness
- Fédération Internationale de Football Association
- FIFA
- FIFA Women's World Cup / Football Women's World Cup / FWWC 23
- Women's World Cup Australia 2023 / Women's World Cup New Zealand 2023

EMBLEMS

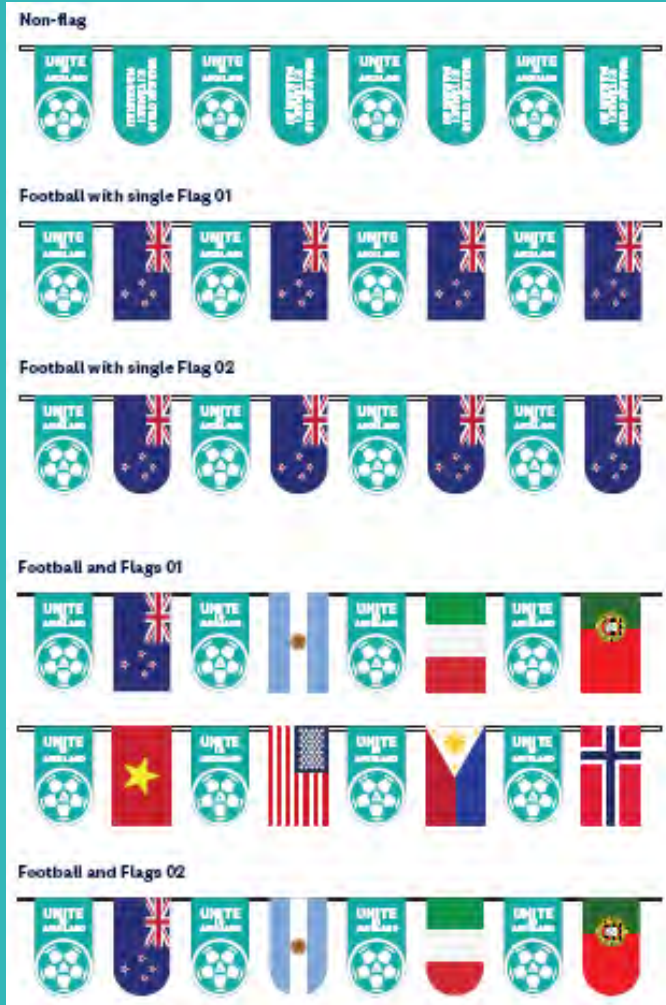


Business dressing

- The FIFA Women's World Cup 2023 will showcase Auckland to the world and we want to look our best.
- To be a proud host of FIFA Women's World Cup 2023, Business Associations can register interest to receive business dressing items such as bunting, posters and decals to make sure local areas make the most of the tournament atmosphere.
- This also gives local areas the opportunity to dress themselves to support the international teams based in their training venues.



Business dressing examples



Business checklist

- Start planning now.
- Learn what you can and can't say around commercial rights.
- Find out if your local area is hosting a team.
- Register interest for business dressing options.
- Make sure you are including “Auckland” in your SEO search criteria and social hashtags.
- Get your **tickets** to the matches at Eden Park!



Questions?

Ngā mihi



Beach Haven Road Pedestrian Crossing: Project Update

Michael Hamerton, Project Manager

3 May 2023

Contents

- Overview and Progress
- Pedestrian investigation
- Concept design options
- Summary of options
- Way forward

Overview and Progress



- Pedestrian crossing investigation to determine desire lines, undertaken Wednesday 22 May 2023
- Three site options selected as suitable for further assessment within investigation area
- Concept design for three options produced
- Internal consultation to determine acceptability with AT Metro

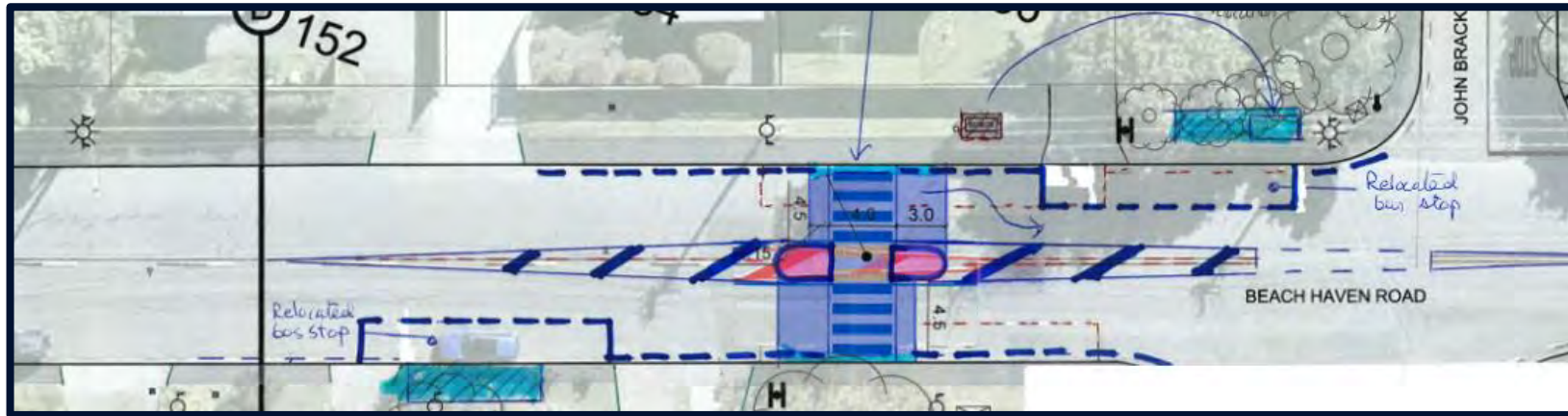
Pedestrian Investigation



AM Peak Pedestrian Survey Results

- Survey undertaken to determine the current demand and desire lines.
- Pedestrian crossing demand linked with bus stop location.
- New crossing location could be considered with bus stops and passenger demand.

Option 1



Advantages

- Proposed location at surveyed desire line, and keeps bus stops together
- Retain existing pedestrian crossings outside #117 and #164; resulting in net gain of crossings plus traffic calming effect.

Disadvantages

- Bus stops and shelter relocation
- Trees to be removed.
- Loss of 2 parking spaces.
- Sight line worsens out of John Bracken Way when bus stopped.



Option 2



Advantages

- Sight lines from John Bracken Way are less impacted.
- No other distinct advantages over Option 1.

Disadvantages

- Bus stops and shelter relocation
- Trees to be removed.
- New northern bus stop location creates unequal spacing between adjacent bus stop locations.



Option 3



Advantages

- Provides safer pedestrian crossing.
- Avoids tree removals, bus stop relocations, and additional consultation.
- General traffic calming effect.
- Lower cost option in comparison to other two options.

Disadvantages

- Located away from main pedestrian desire lines and away from the bus stops.



Option Summary

Criteria	Option 1	Option 2	Option 3
Avoids tree removal	✗	✗	TBC
Avoids parking loss	✗	✓	✓
Accepted by AT Metro	✓	✗	▬
Avoids bus stop relocation	✗	✗	✓
Consistent with current desire lines	✓	✗	✓
Keeps bus stops “paired”	✓	✗	✓
Safe crossing location provided	✓	✓	✓
Net gain in pedestrian crossing locations	✓	✗	✗
Stormwater impacts	TBC	TBC	TBC
Recommended Option	✗	✗	✓



Way forward

Item	Timeframe*
Topographical Survey	Late May 2023
Preliminary design for preferred option	Late June 2023
Detailed Design and Consultation (including Road Safety Audit)	July - September 2023
Statutory Applications	October - December 2023
Tender and Procurement Process	January - February 2024
Construction	March 2024

*timeframes are indicative



Thank you

Pupuke Road / Ocean View Road Intersection: Design Options

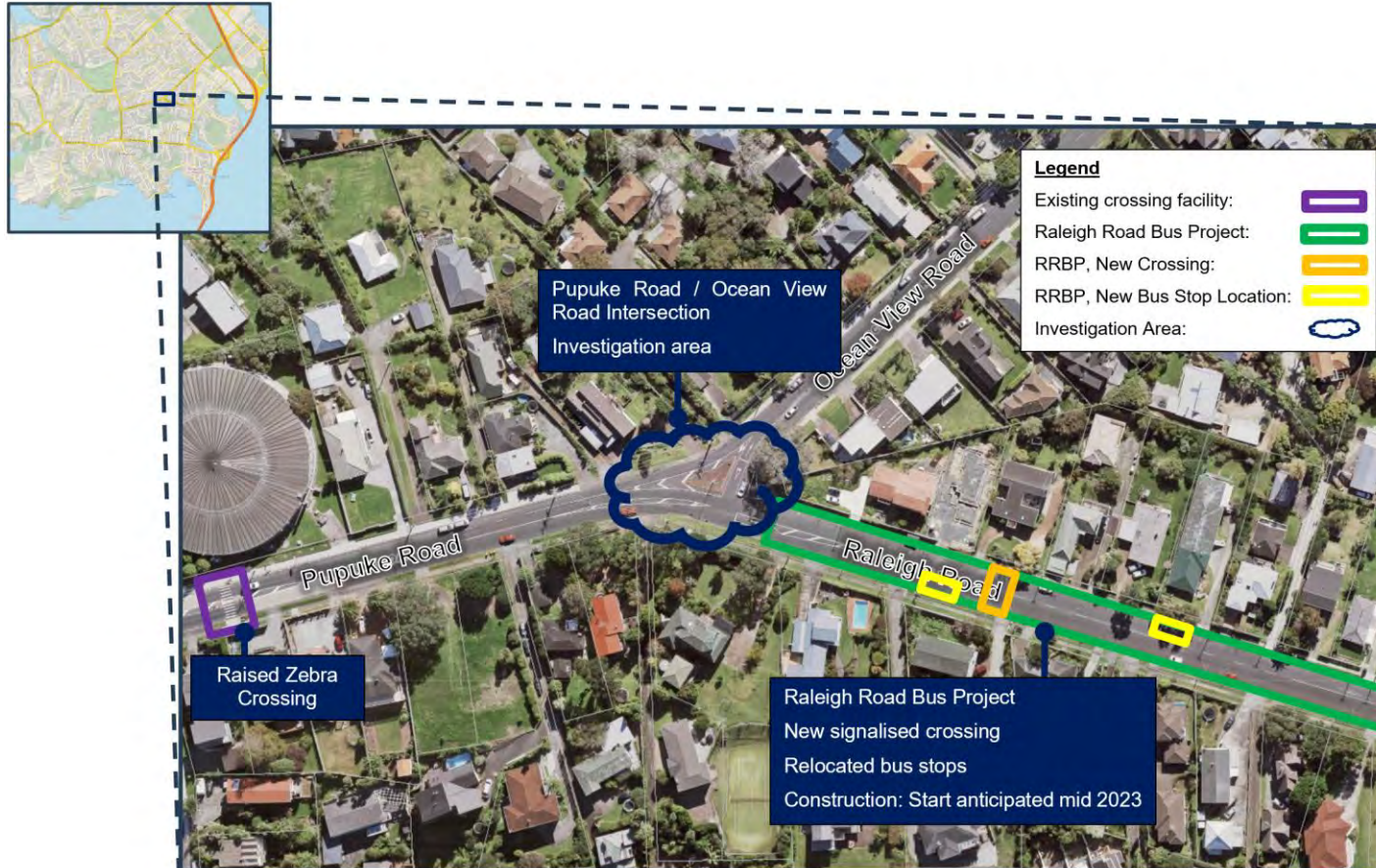
Michael Hamerton, Project Manager

3 May 2023

Contents

- Overview and Progress
- Pedestrian investigation
- Concept design options
- Summary of options
- Way forward

Overview and Progress



- Pedestrian surveys, undertaken Wednesday 8th March 2023
- Topographical survey undertaken during February 2023
- Three designs developed through concept to draft level.
- Preliminary stormwater assessment undertaken.
- Reviewed with surrounding projects, notably Raleigh Road bus project.

Pedestrian Investigation

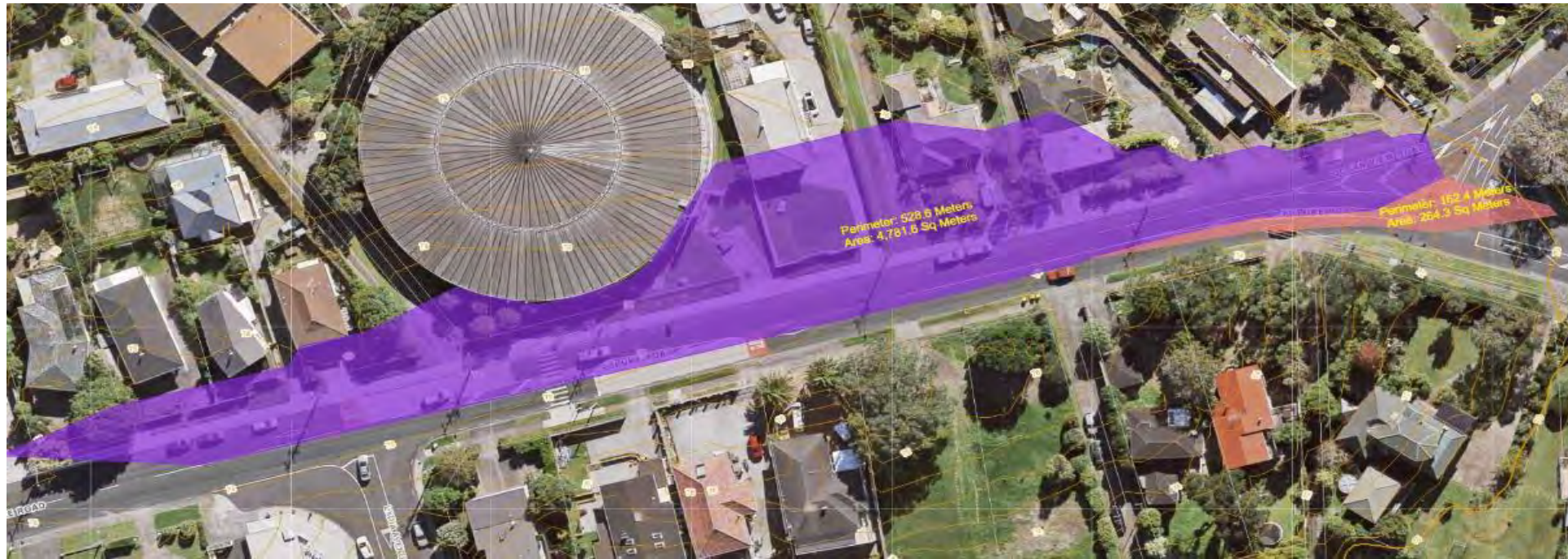


AM Peak Pedestrian Survey Results

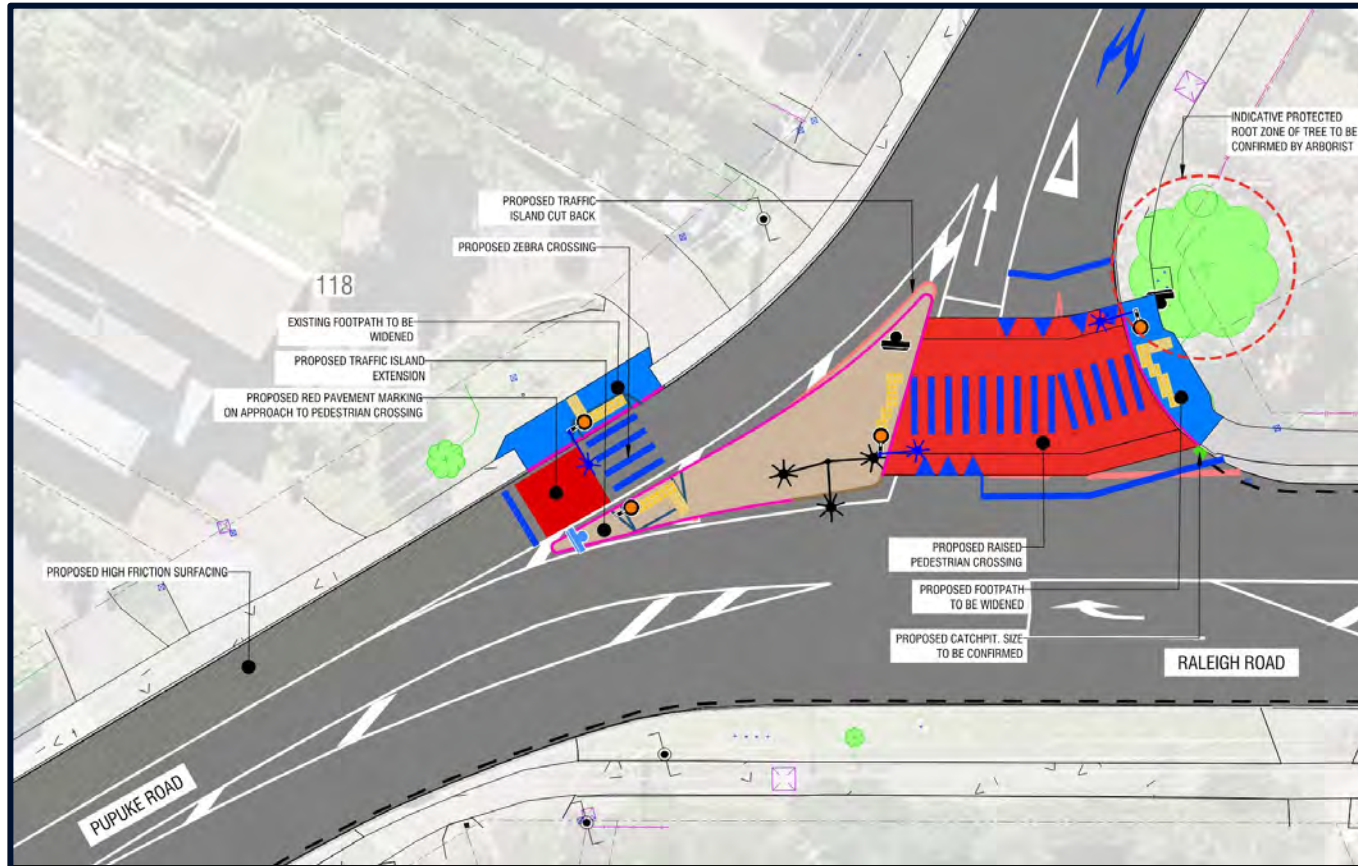
- Current desire lines show the east-west movement is the highest.
- Bus stop is a demand generator, but being relocated by Raleigh Road bus project.
- Future works by the Raleigh Road bus project will provide a new north-south crossing link.
- Proposals have focussed on the east-west link.

Preliminary Stormwater Investigation

- Stormwater catchments determine the suitability of raised safety platforms.
- Identified that a raised safety platform cannot be placed on the slip lane, as it would result in stormwater runoff towards nearby houses.

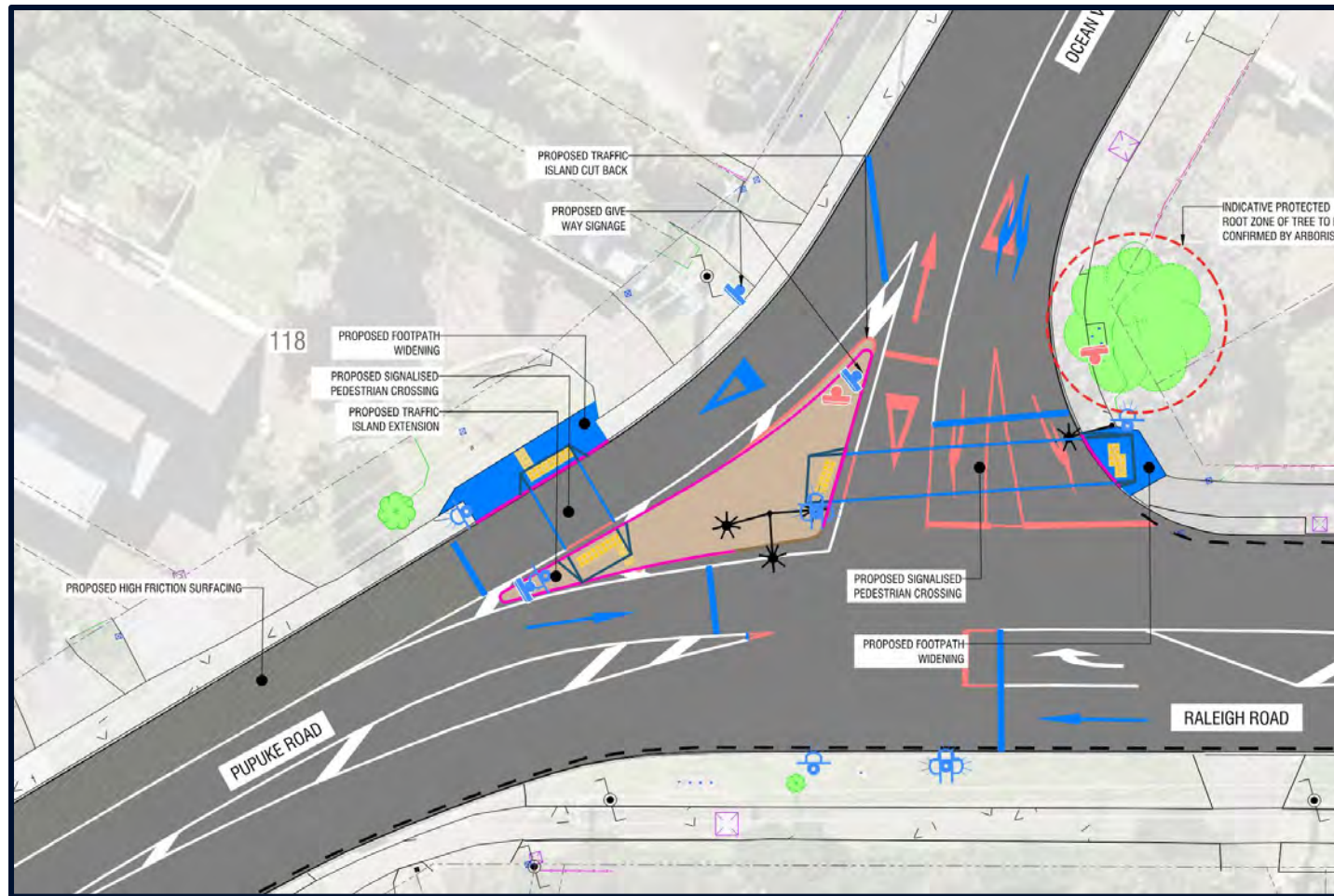


Option 1



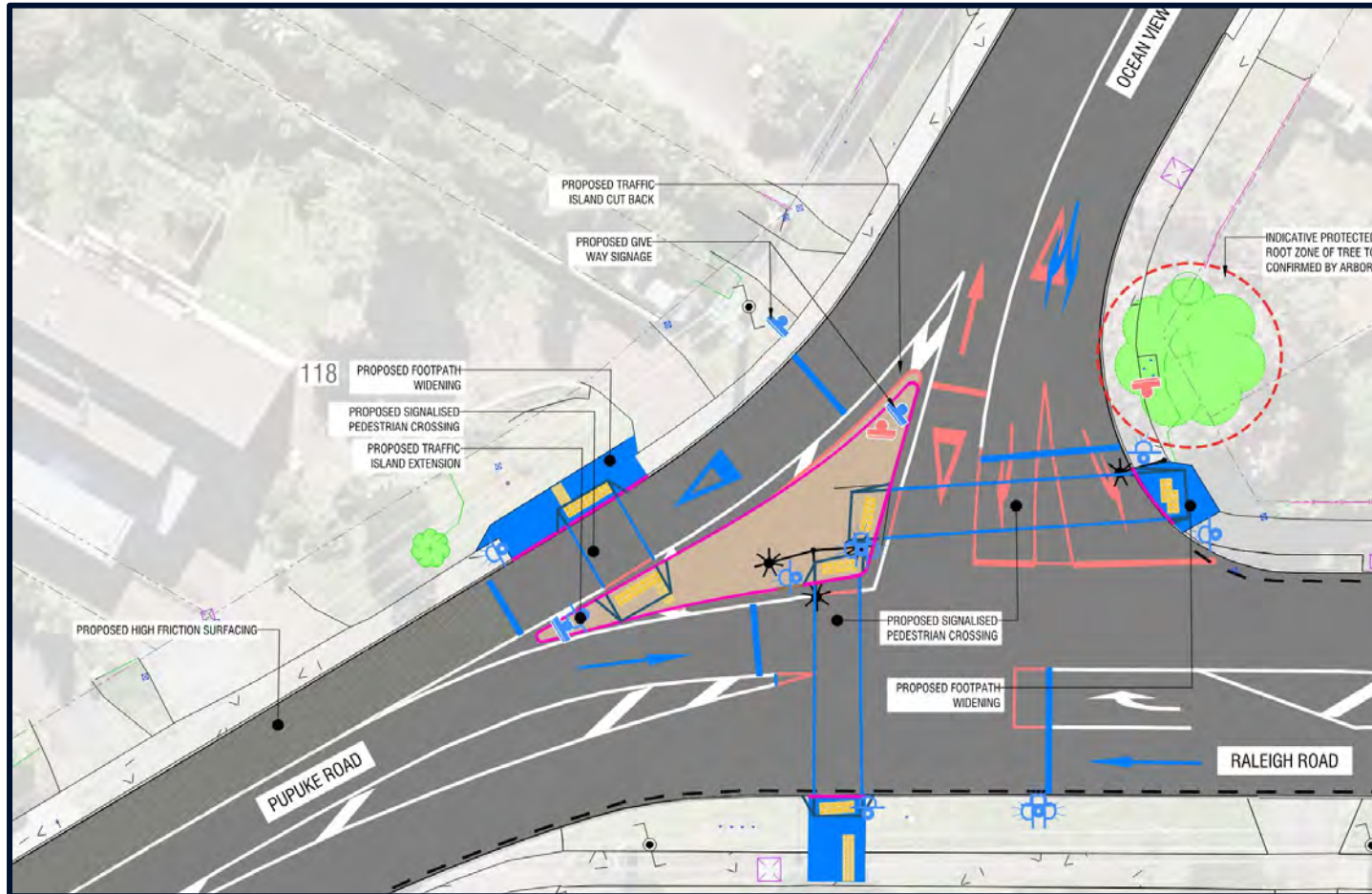
- One level zebra crossing and one raised zebra crossing.
- Kerb extension on central island to create space for pedestrian crossing on slip lane
- Potential excavation within the tree root zone.
- Waiting cars will wait across zebra crossing.
- 13m wide crossing on the platform exceeds the maximum preferred distance of 10m.

Option 2



- Two signalised crossings.
- Kerb extensions to create space for ped crossing on slip lane
- Reduced risk of impact to tree root zone (to be confirmed by arborist)
- Opportunity improve turning into and out of Ocean View Road.
- Feasibility subject to traffic modelling outcomes.

Option 3



- Option 2 but with an additional north-south signal crossing on Pupuke Road.
- Low pedestrian demand on north-south crossing.
- Adjacent Raleigh Road bus project will be delivering north-south signalised crossing.
- Feasibility subject to traffic modelling.

Option Summary

Criteria	Option 1	Option 2	Option 3
Lower risk to tree root zones (tbc)	✘	✔	✔
No expected loss of parking	✔	✔	✔
Consistent with current desire lines	✔	✔	✔
High level of pedestrian protection	✘	✔	✔
Stormwater mitigation is feasible	✘	✔	✔
Recommended Option	✘	✔	✘



Way Forward

Item	Timeframe*
Detailed Design for preferred option, and Consultation (including Road Safety Audit and ATOC review for signal options)	May – August 2023
Statutory Applications	September - October 2023
Tender and Procurement Process	November - December 2023
Construction	January – February 2024

*timeframes are indicative





Let's go there 

Drafting the Kaipātiki Local Board Plan 2023

Pre-engagement findings

3 May 2023



Session outline

- Complete Strawman discussion from last week
- Pre engagement results
- Next Steps



Timeline

- **Local board plans** must be adopted by 31 October 2023.



Pre-engagement



Pre-engagement phase

- In-person
 - 1 April – Te Ara Awataha celebration
 - 17 April – World Café evening, Beach Haven
 - 18 April – Māori Hui – Whakawhanaungatanga
- Written
 - Engagement ‘postcards’ distributed at events, displayed at libraries and an electronic version sent to stakeholder list
- Digital tools
 - ‘Share your idea’ and a survey, live for the month of April

This information is still being collected and will be shared with Members when analysed



Postcards and Sticky-dots

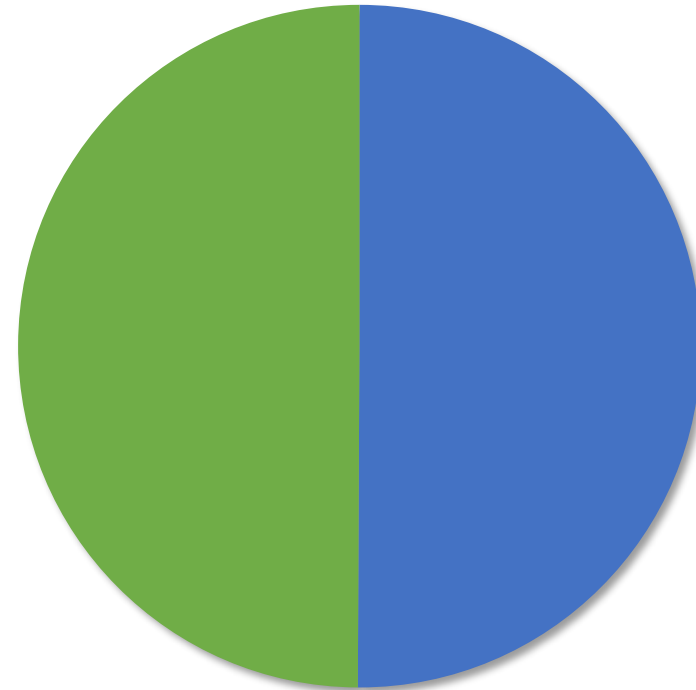


Feedback



Feedback points recieved

**1028,
Events**

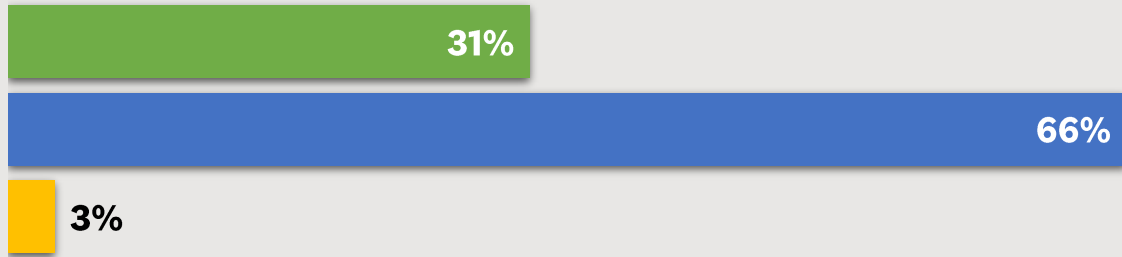


**1031,
Postcards**

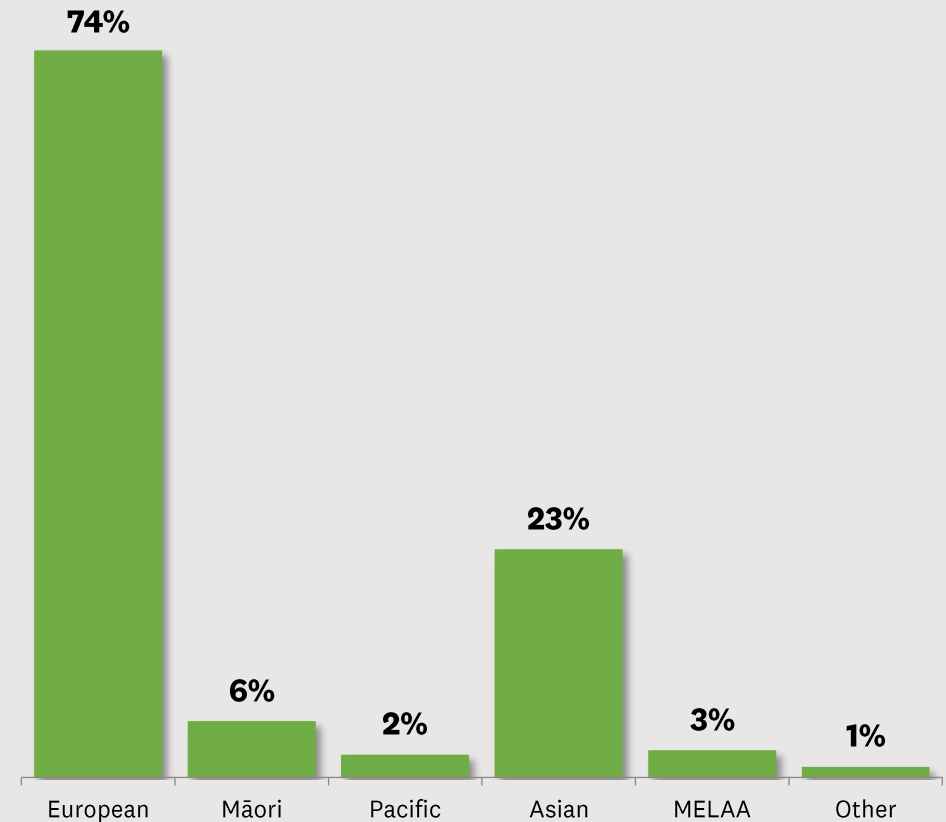
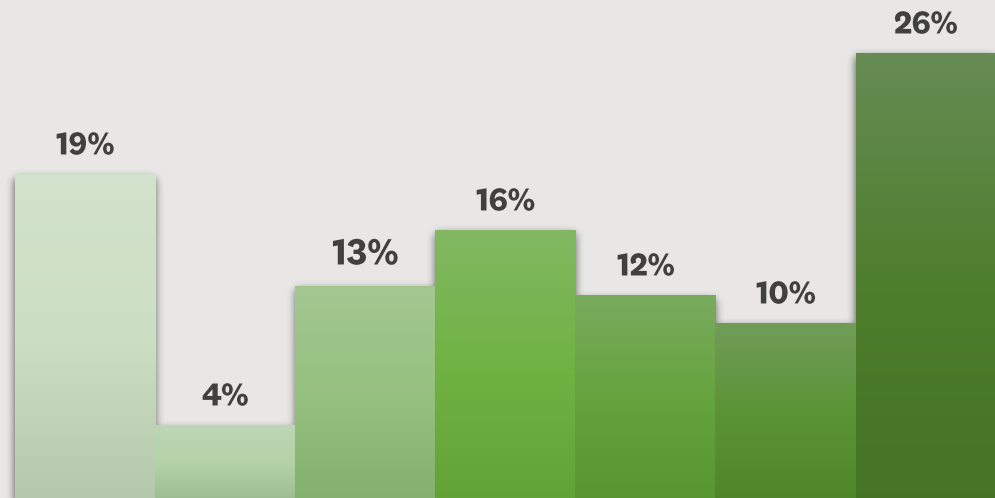


Demographics

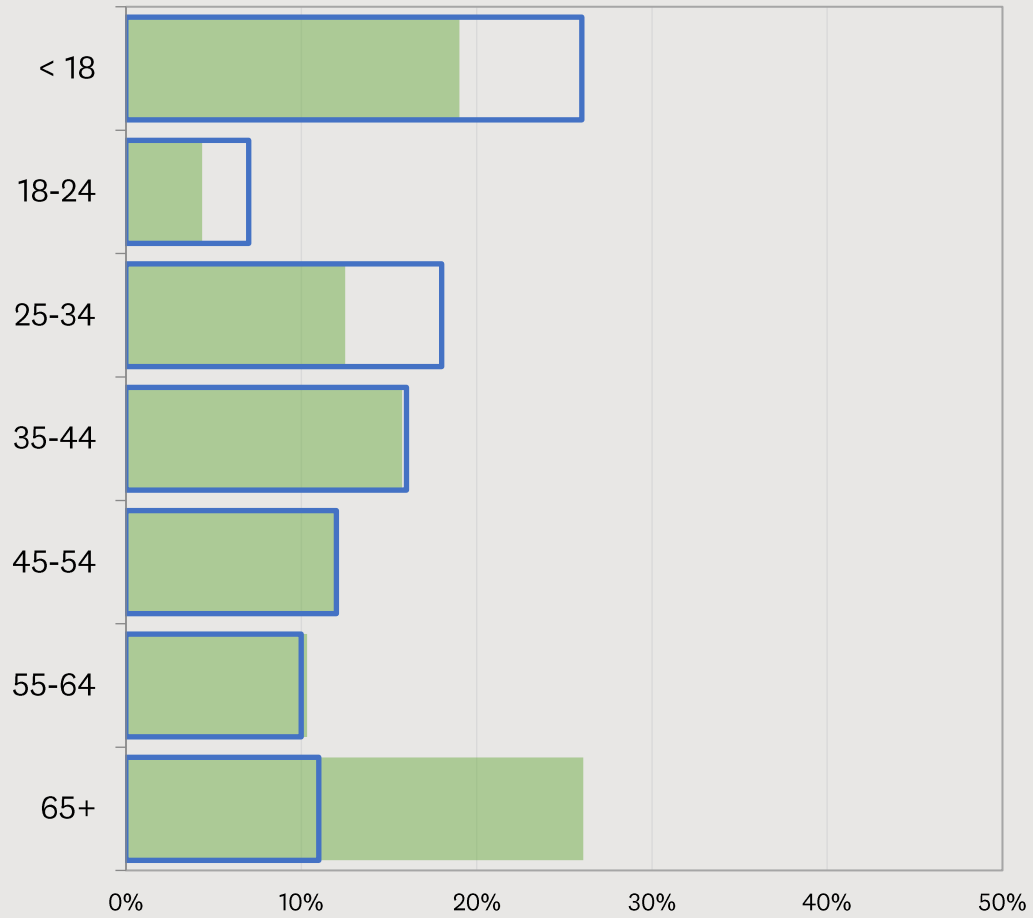
Male Female Gender Diverse



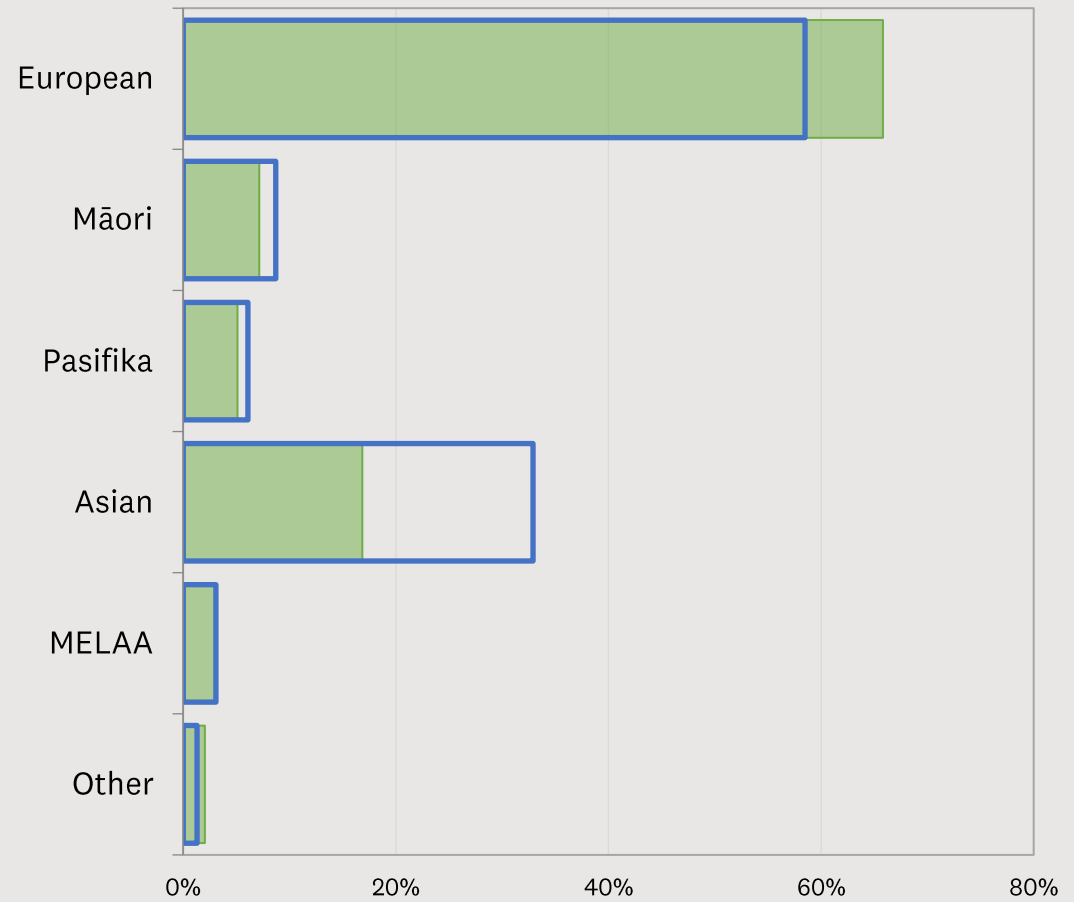
< 18 18-24 25-34 35-44 45-54 55-64 65+



Demographics – Representative Sample?



■ % □ % Census



■ % □ % Census



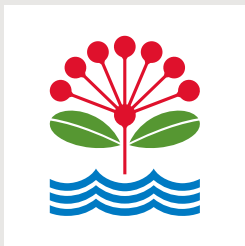
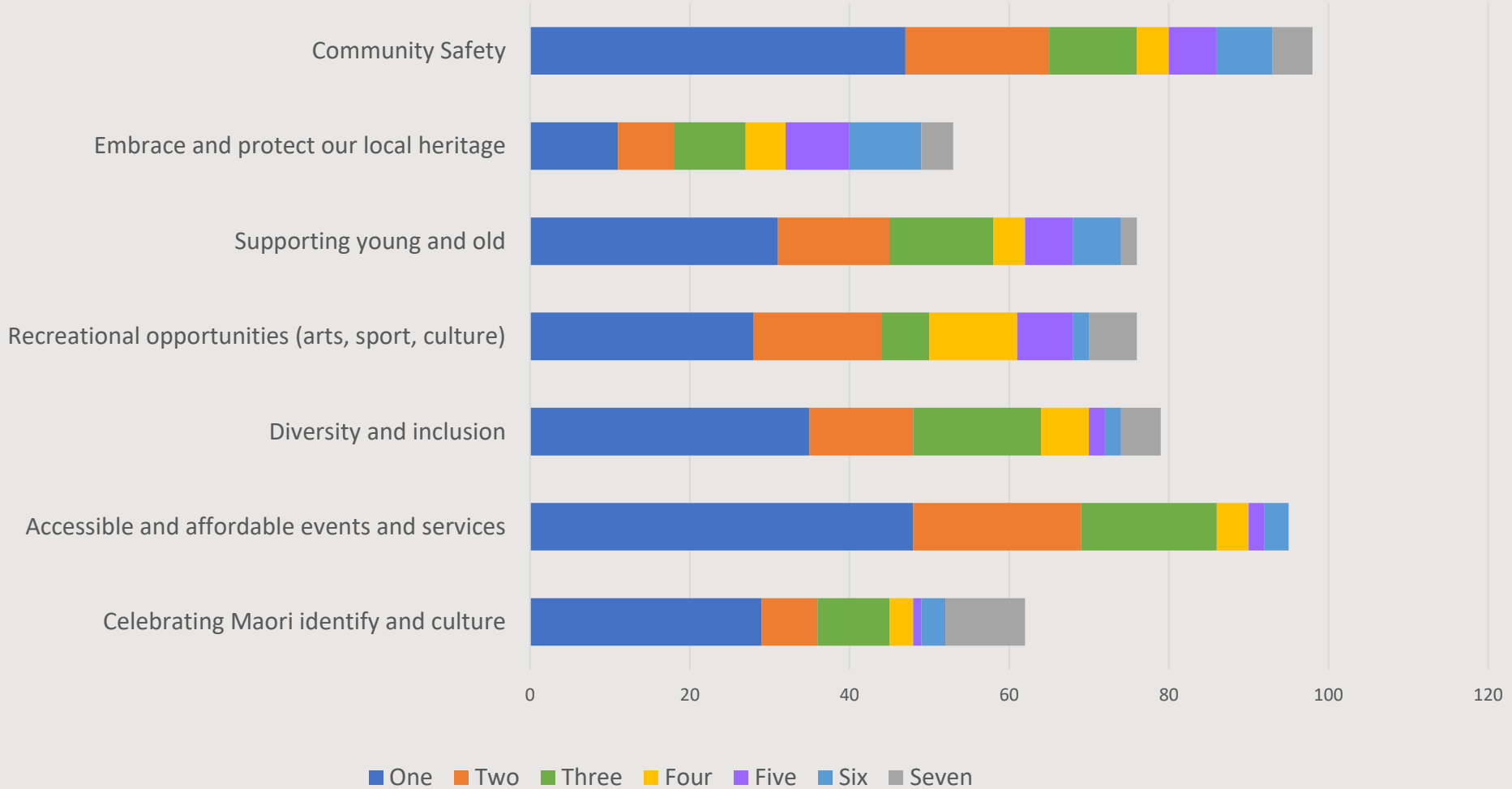


Belonging and Wellbeing



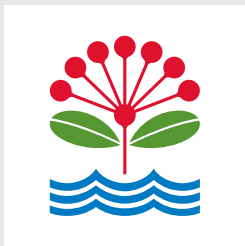
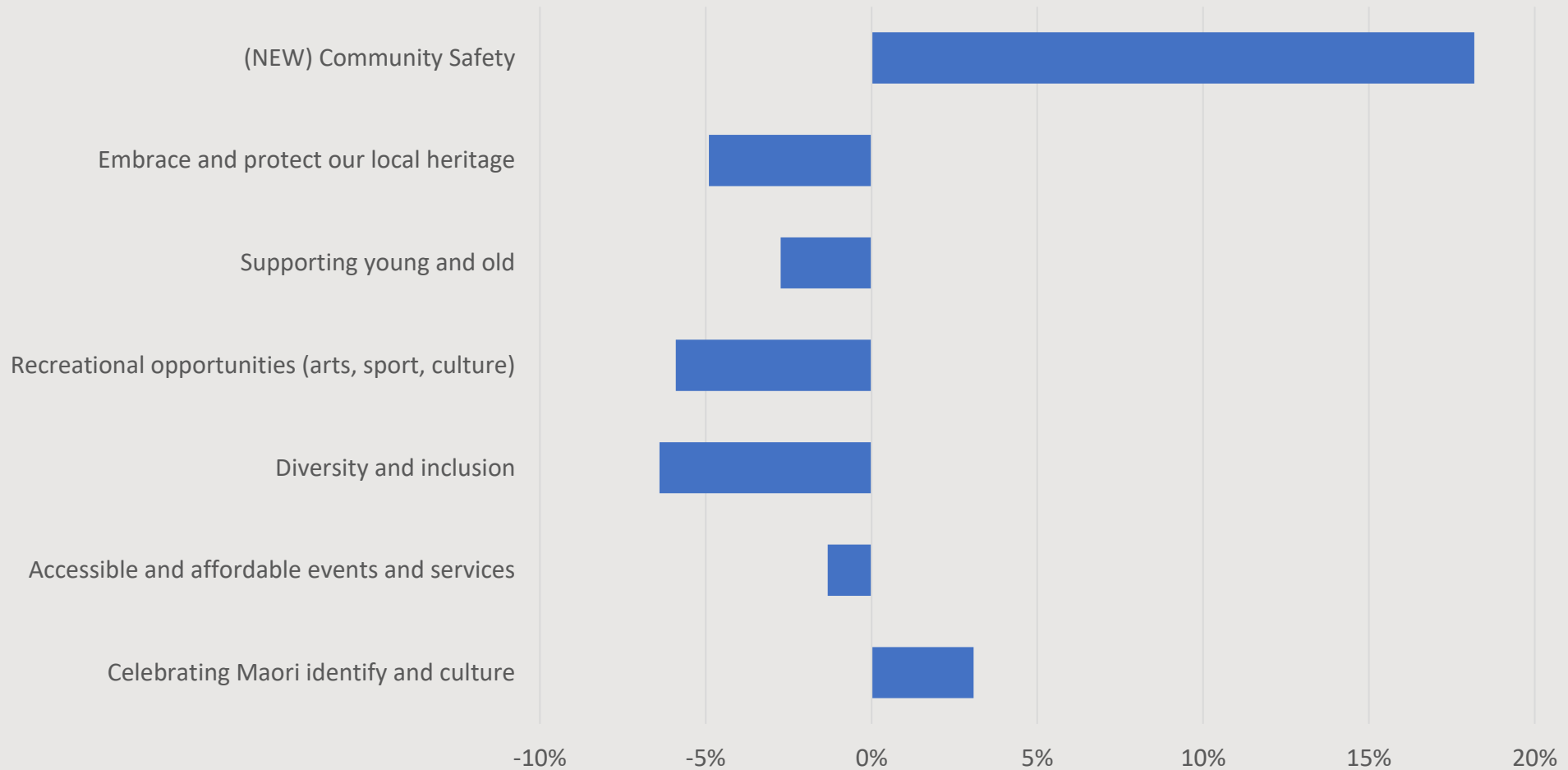
Priority Goals (ranked)

Belonging and Wellbeing



Priority Goals (total count) – compared to 2020

Belonging and Wellbeing - Change from 2020



Themes – Belonging and Wellbeing

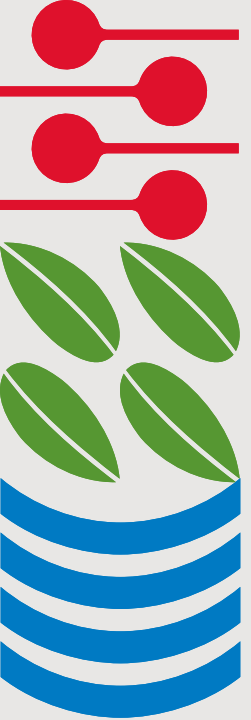
**Need to look
after people**

**Opportunities
for
community
connection**

**Keep things
accessible
and
affordable**

**Support local
groups**



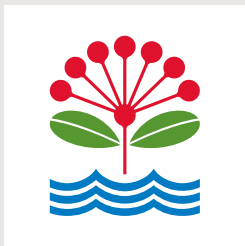
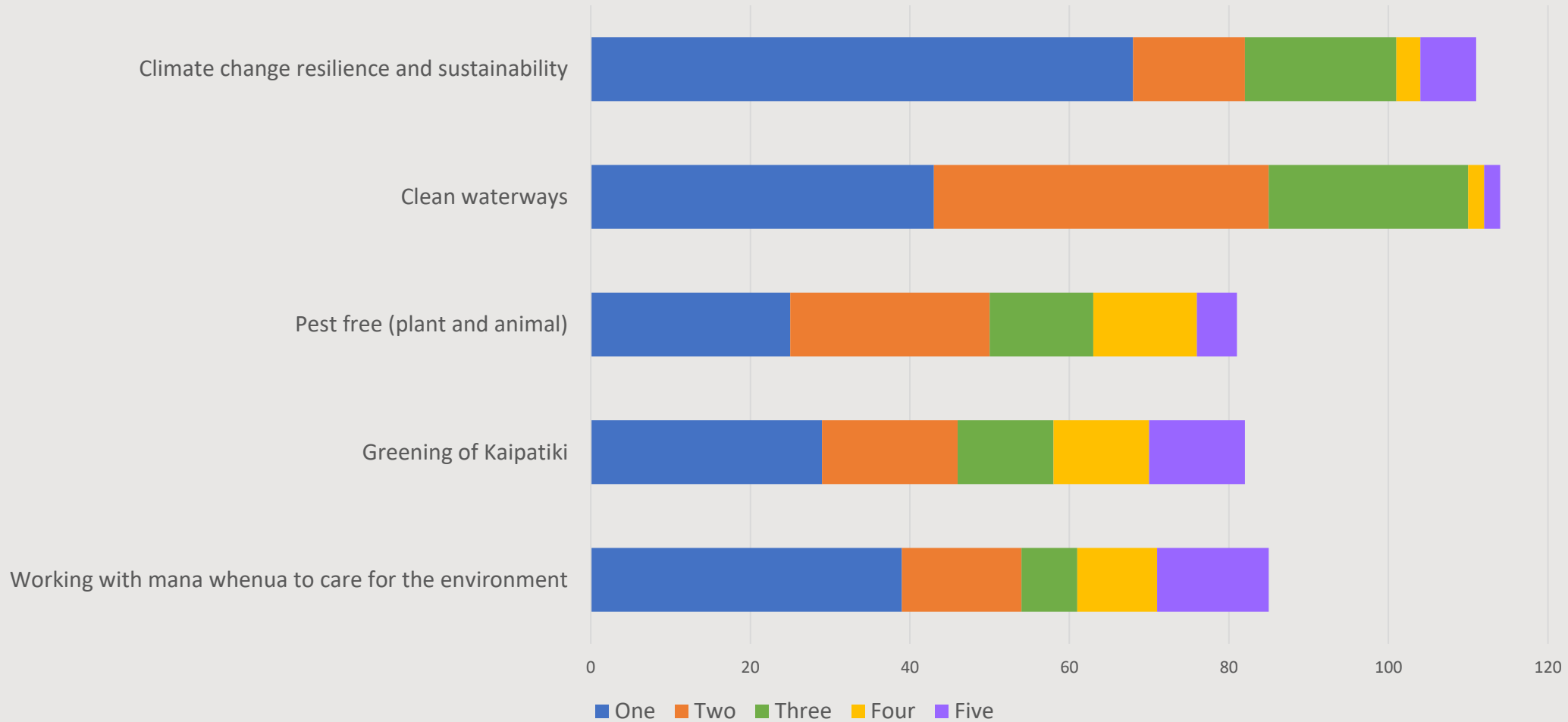


Environment



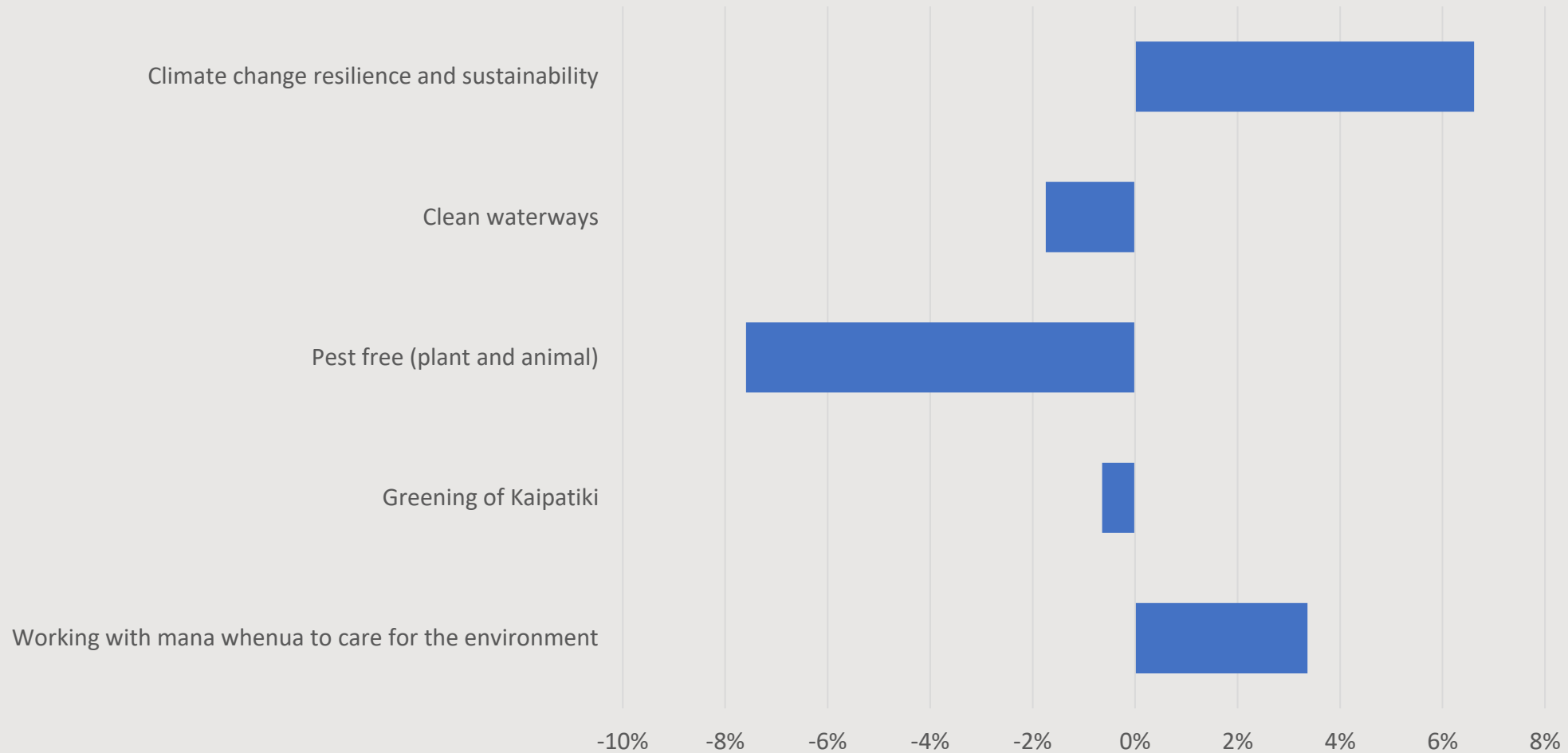
Priority Goals (ranked)

Environment



Priority Goals (total count) – compared to 2020

Environment - Change from 2020



Themes – Environment

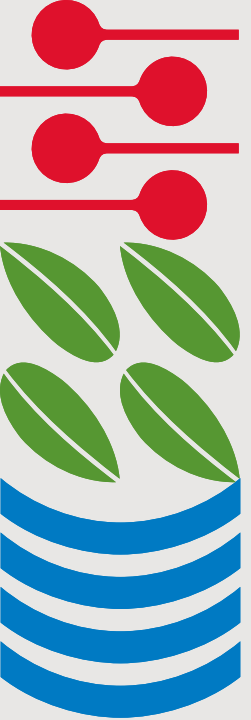
**Environmental
education**

**All the goals
are
integrated**

**Protect our
greenery**

**Retaining
current
investment**



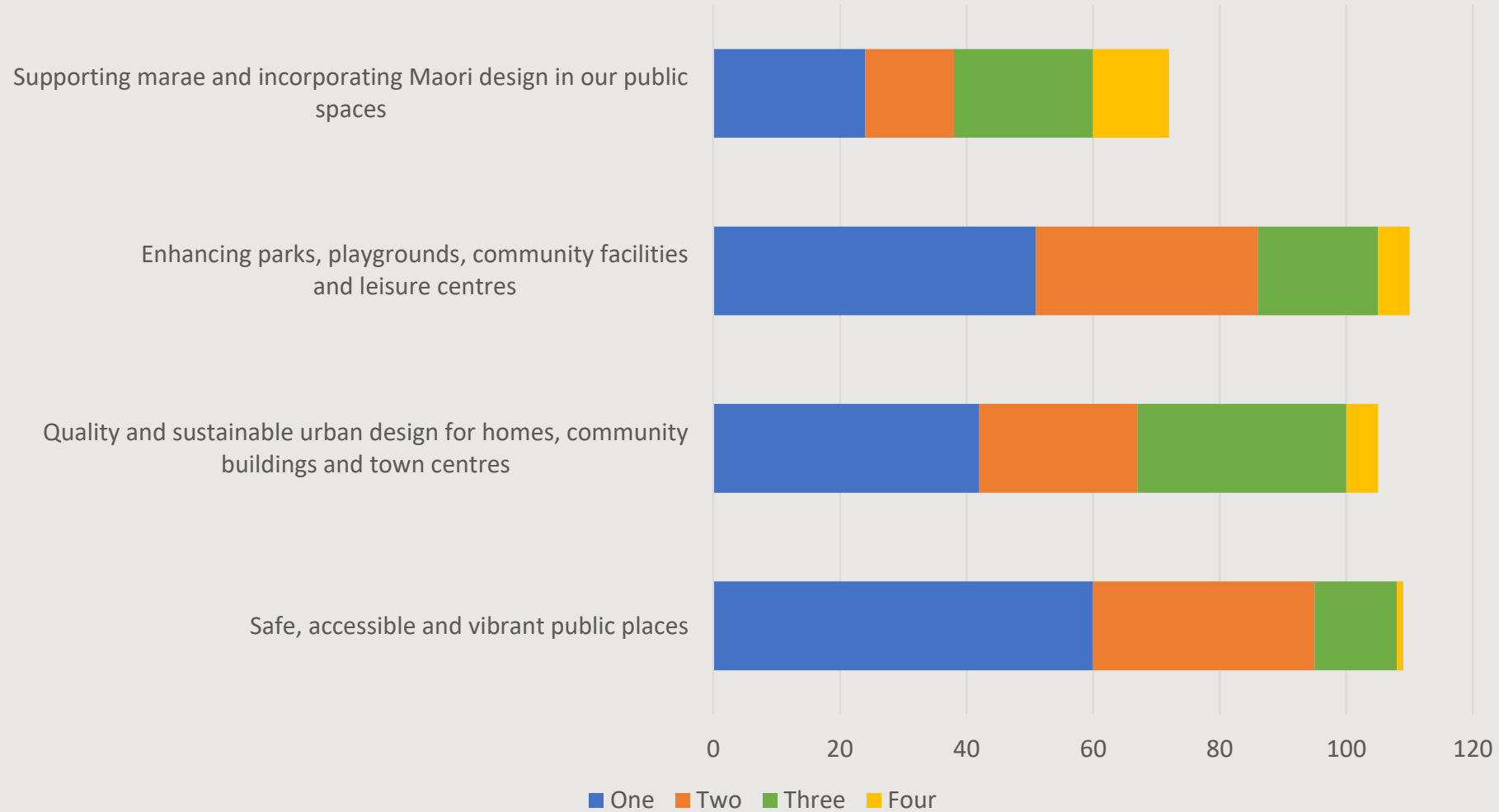


Places and Spaces



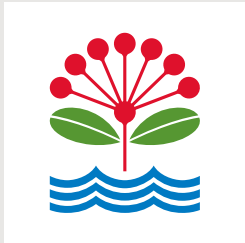
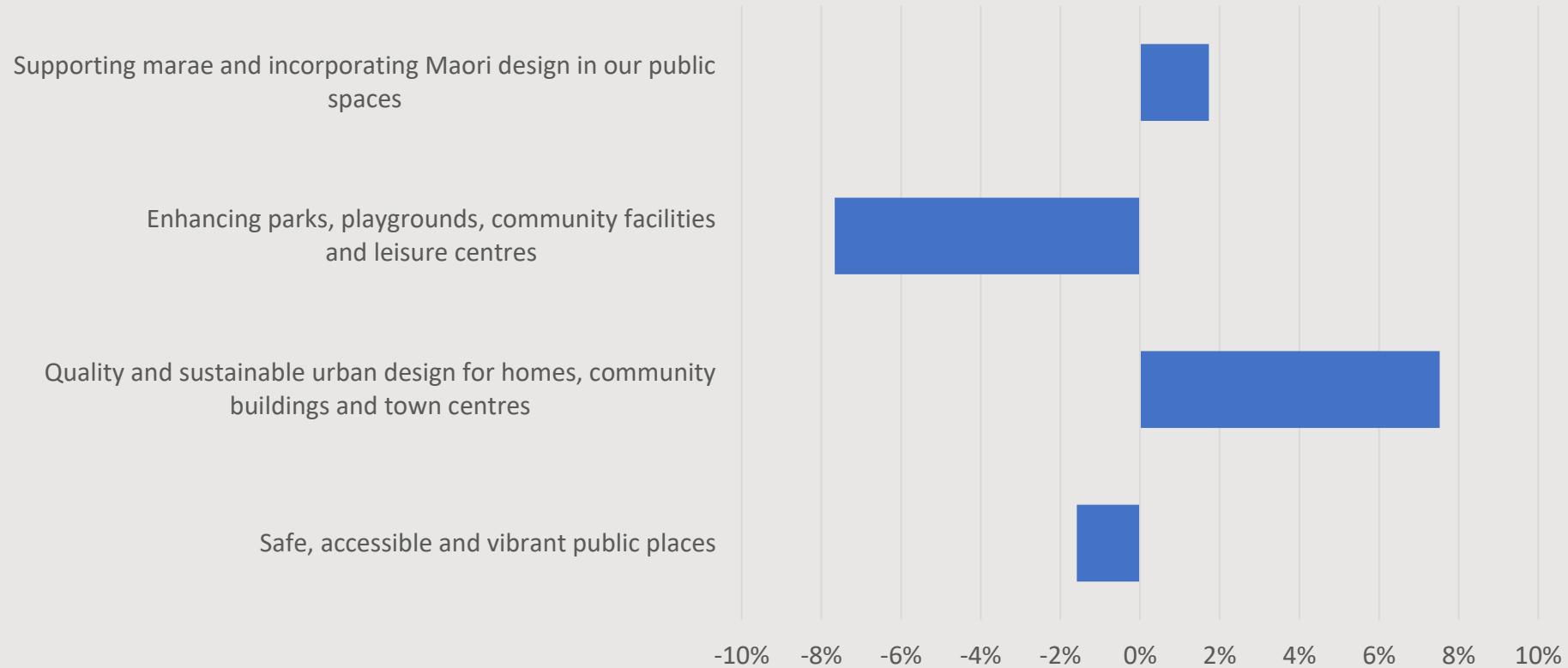
Priority Goals (ranked)

Places and Spaces



Priority Goals (total count) – compared to 2020

Places and Spaces - Change from 2020



Themes – Places and Spaces

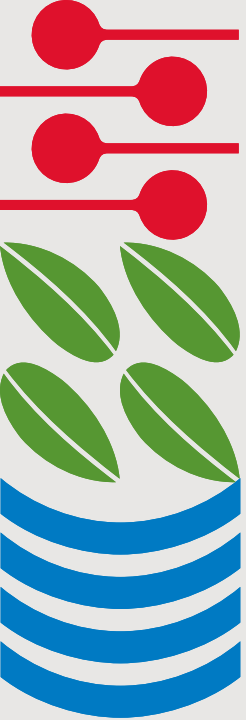
**Variety of
places and
spaces**

**Invest in
neglected
facilities**

**Access for
low-income**

**Ability to
respond to
intensification**



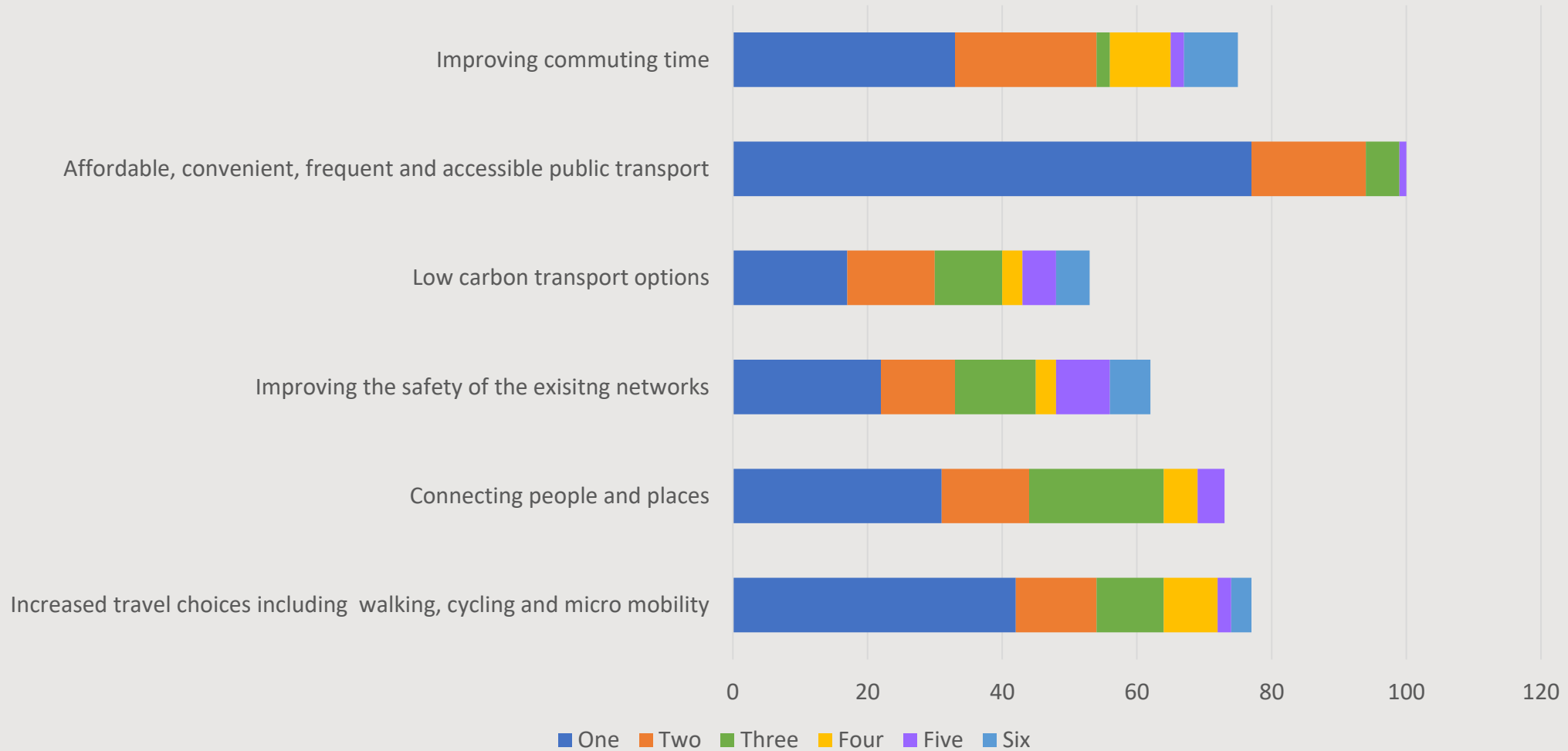


Transport and Connections



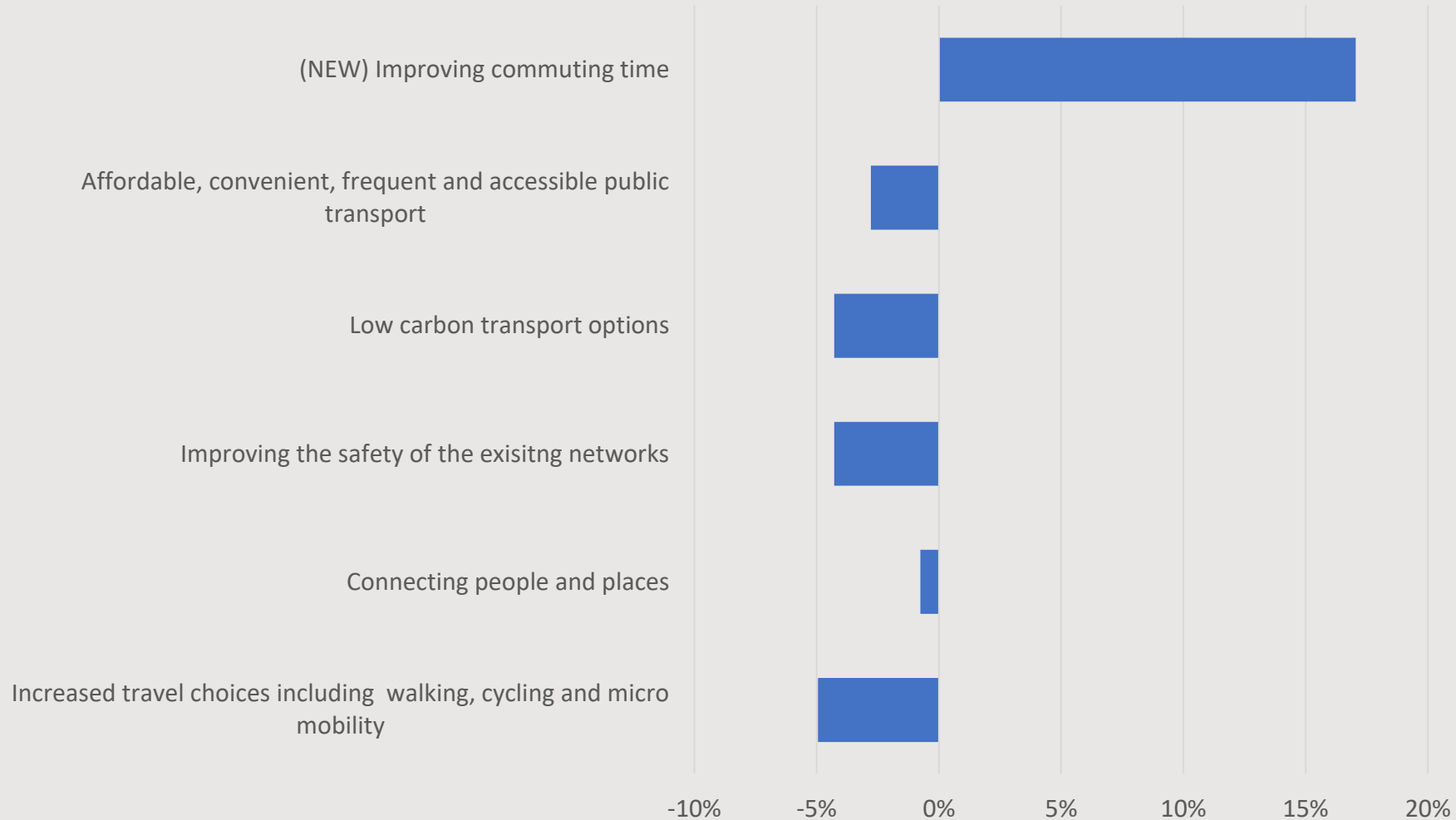
Priority Goals (ranked)

Transport and Connections



Priority Goals (total count) – compared to 2020

Transport and Connections- Change from 2020



Themes – Transport and Connections

**Public
transport
needs to be
reliable**

**Impact of
development
on transport
needs**

**More bike
lanes**

**Improved
commuting
experience
needed**



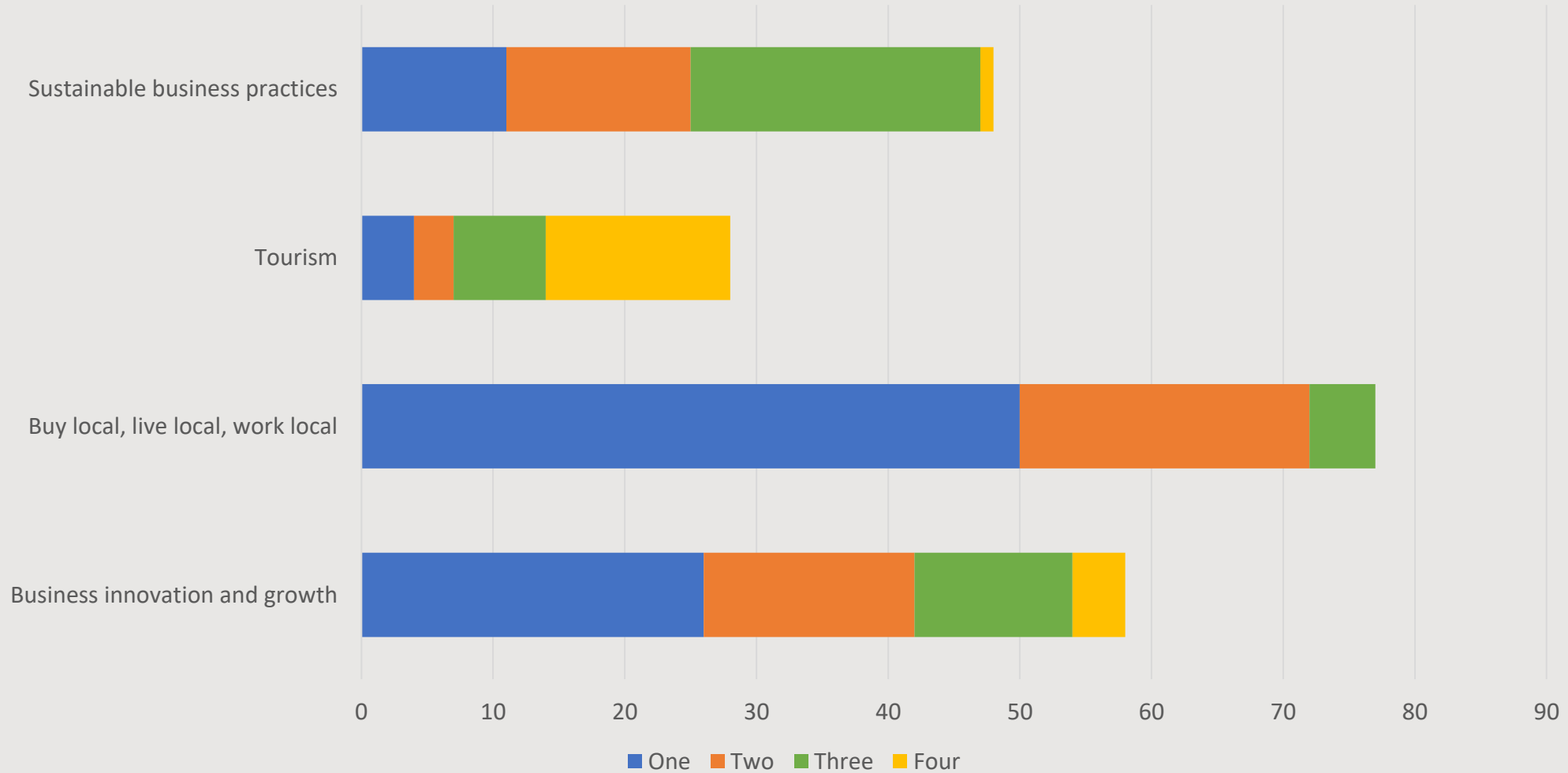


Opportunity and Prosperity



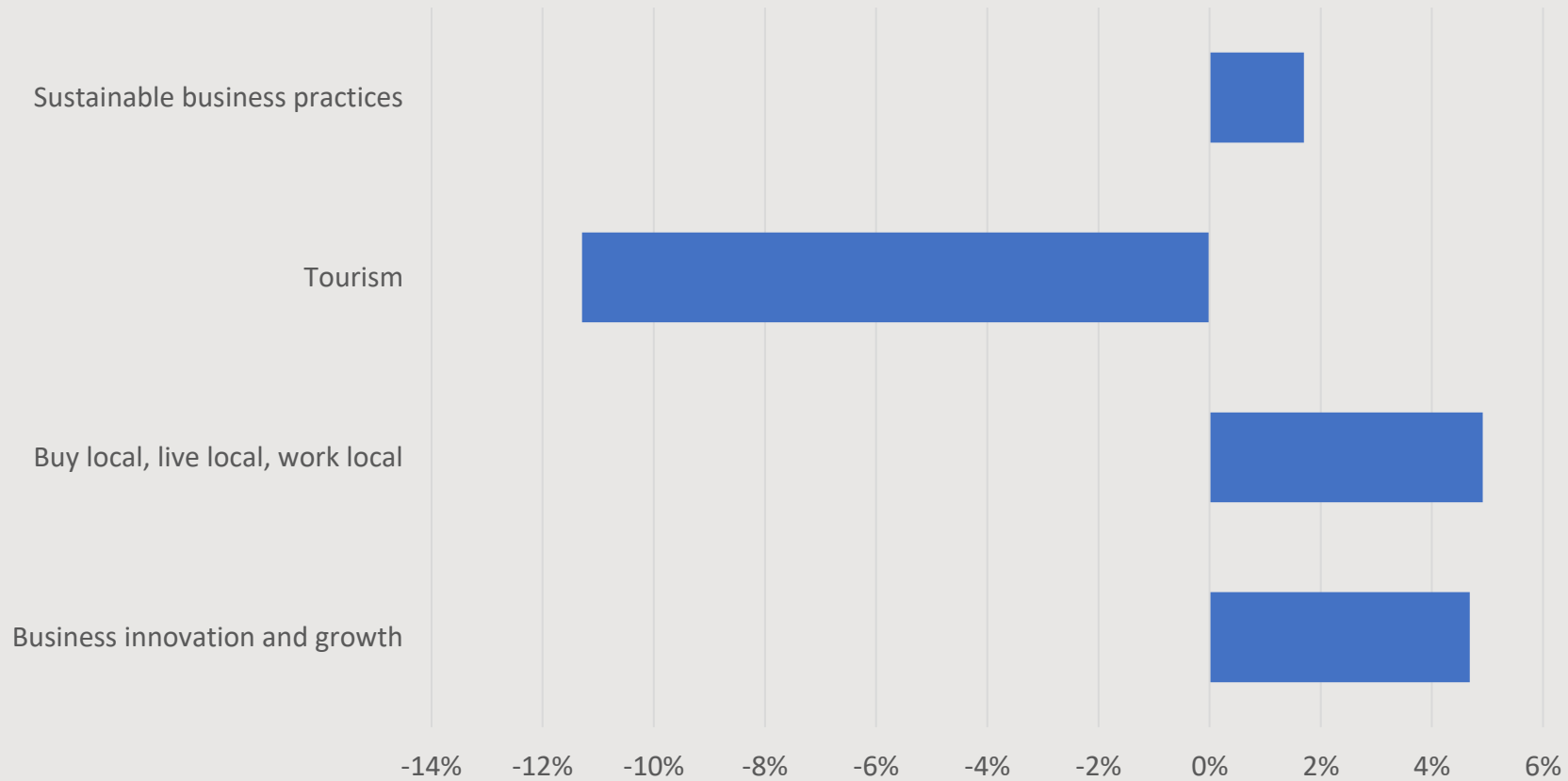
Priority Goals (ranked)

Opportunity and Prosperity



Priority Goals (total count) – compared to 2020

Opportunity and Prosperity - Change from 2020



Themes – Opportunity and Prosperity

**Supporting
local
economy**

**Implement
ideas proven
elsewhere**

**Sustainable
impact**

**Support small
businesses**



Next steps

- Engagement with Iwi and our local Māori community
- 7 June - Workshop Draft Local Board Plan
- 21 June – Adopt Draft Local Board Plan for consultation

