

## Kaipātiki Local Board Workshop Programme

**Date of Workshop:** Wednesday 31 May 2023  
**Time:** 10.00am  
**Venue:** Boardroom, 90 Bentley Ave, Glenfield

Time	Workshop Item	Presenter	Governance role	Proposed Outcome(s)
10.00 – 11.00am	Connected Communities <ul style="list-style-type: none"> <li>• Manaakitanga Kaipātiki work programme line FY22-23               <ul style="list-style-type: none"> <li>- Taiao Ora</li> </ul> </li> </ul>	<b>Cicilia Dwe</b> Community Broker, Connected Communities  <b>Trina Schuster</b> Connected Communities Lead & Coach, Connected Communities  <b>Lavinia Rongo</b> Project Lead Taiao Ora	<ul style="list-style-type: none"> <li>• Keeping informed</li> </ul>	<ul style="list-style-type: none"> <li>• Receive update</li> </ul>
11.00 – 11.10am	Break			
11.10am – 12.10pm	Auckland Emergency Management – Local Board response plans	<b>Paul Amaral</b> General Manager Auckland Emergency Management  <b>John Cranfield</b> Head of Response & Recovery, Auckland Emergency Management  <b>Adam Maggs</b> Head of Capability & Public Awareness, Auckland Emergency Management  <b>Melanie Hutton</b> Head of Resilience, Auckland Emergency Management	<ul style="list-style-type: none"> <li>• Setting direction</li> </ul>	<ul style="list-style-type: none"> <li>• Define board position and feedback</li> </ul>

12.10 – 1.00pm	Lunch			
1.00 – 2.00pm	<p>Connected Communities</p> <ul style="list-style-type: none"> <li>Tāmaki Makaurau - Te Puni Kokiri Regional Advisor</li> </ul>	<p><b>Dave Kaio</b> Manukura   Te Rakipaewhenua-North Shore me Te Uru o Tāmaki Makaurau-West Auckland, Te Puni Kōkiri</p> <p><b>Anahita Oei</b> Local Board Engagement Advisor, Local Board Services</p> <p><b>Cicilia Dwe</b> Community Broker, Connected Communities</p>	<ul style="list-style-type: none"> <li>Keeping informed</li> </ul>	<ul style="list-style-type: none"> <li>Receive update</li> </ul>
2.00 – 3.00pm	<p>Infrastructure and Environmental Services</p> <ul style="list-style-type: none"> <li>Environmental Services Work Programme <ul style="list-style-type: none"> <li>Pest Free Kaipātiki</li> <li>Kaipātiki Project</li> </ul> </li> </ul>	<p><b>Mary Stewart</b> Senior Conservation Advisor, Infrastructure and Environmental Services</p> <p><b>Brandii Stephano</b> Relationship Advisor, Infrastructure &amp; Environmental Services</p> <p><b>Annie Dignan</b> General Manager, Pest Free Kaipātiki</p> <p><b>Janet Cole</b> Manager, Kaipātiki Project</p>	<ul style="list-style-type: none"> <li>Setting direction</li> </ul>	<ul style="list-style-type: none"> <li>Define position and feedback</li> </ul>

**Next workshop:** Wednesday 7 June 2023

<b>7-Jun-23</b>	9.15am	9.50am	Members only time
	10.00am	12.00pm	Auckland Transport <ul style="list-style-type: none"> <li>Local Board Transport Capital Fund and Globe lights</li> </ul>
	12.00pm	12.45pm	Lunch
	12.45pm	2.45pm	Customer and Community Services - Parks and Community Facilities
	2.45pm	3.00pm	Break
	3.00pm	4.30pm	Draft Local Board Plan

**Role of Workshop:**

- (a) Workshops do not have decision-making authority.
- (b) Workshops are used to canvass issues, prepare local board members for upcoming decisions and to enable discussion between elected members and staff.
- (c) Workshops are open to the public however, decisions will be made at a formal, public local board business meeting.
- (d) Members are respectfully reminded of their Code of Conduct obligations with respect to conflicts of interest and confidentiality.
- (e) Workshops for groups of local boards can be held giving local boards the chance to work together on common interests or topics.



# TAIAO ORA

HONONGA - CONNECTING COMMUNITIES

## Taiiao Ora

HONONGA - CONNECTING COMMUNITIES



FREE HANGI | KAPAHAKA | HARAKEKE WEAVING  
| MINI MARKET | RONGOA AND MORE

OPAKETAI BEACH HAVEN GARDENS, 356 RANGATIRA ROAD

**01  
JULY  
SATURDAY**

**1PM  
TO 6PM  
FREE EVENT**



Presented by  
Lavinia Hera Rongo



# HOROPAKI PROJECT

Taiao Ora is a Te Ao Maori approach to art forms through spirituality, traditional customs and integrations that tautoko and support our community to nurture and express ones self through teachings of Te Ao Maaori matauranga that brings knowledge and awakening of skills into alignment for life and career purposes. This event empowers local businesses and our people to showcase their talents and crafts. We also support and instill foundational knowledge into our communities of traditional methods of living off the taiao to support whanau and tamariki in their homes for day to day living.



# ANAMATA<sub>VISION</sub>

- Create relationships with local iwi, marae, kura, kohanga reo, Māori whanau to create prosperous programs or implementations in this area for change and reclaiming tikanga and innovative creative and spaces of connection in this district
- Engage to support local kura/events to showcase local talents
- Engage with whanau to produce and provide living capabilities through te ao Māori/ te reo lessons/rongoa lessons/living off the whenua
- Community workshops, professional developments

### MINI MAARAMATANGA

- Mini maara plants
- Matauranga on Maramataka,
- Seeding kai pods and pots.
- Harakeke weaving and mahi raranga.



### MAHI A REHIA

- Traditional Maori games and activities for learning connection and matauranga development

### MAORI MARKET

Mini Local Maori business

- Food stalls
- Arts/Crafts stalls
- Local sales of produce kai or home made items



### TOI ARTS

Exposure to public presentation through the arts of kapahaka me nga mahi-a-rehia (mau rakau, patu, tititorea, waiata), Carving and history on Maori arts.

### MAORI KAI

- Free traditional Maori kai with and guides on how to create at home for whanau members.



### RONGO MAORI

Connections to nature through, life skills of harvesting, maramataka, rongoa - medicine, weaving to build resilience and enabling capable contributors of our community

# HEI MAHI ACTIVATIONS

- Haka Powhiri
- Kapahaka
- Mau Rakau Activity
- Local performances
- Poi Station
- Raranga/Weaving station
- Traditional Maori Games station
- Traditional Maori musical station
- Maara/Maramataka Station
- Te Reo Maori Station
- Mini whakairo/carving station
- Moko Station
- Free Hangi





# Tukunga iho/Outcome:



Taiao Ora is a kaupapa that brings local communities together to collaborate, network and reclaim an awakening of spirituality, expression, and healing through Te Ao Maori traditions that will align personal visions and aspirations for success in our community, re-connecting to re-invent. Our taiao and our Te Ao Maori customs are the source of re-connecting our whanau and our people. This kaupapa allows a space for our people to express supports needed in the local area, and enables contribution to statistic and systemic barriers our people face as space to find solutions.



**PAITAI**



# Local Board Elected Members' Response Plan Workshop

23 May 2023



**Auckland  
Emergency  
Management**  
Tokonga Mate Ohotata o Tamaki Makaurau



# AEM Responsibility

- Group office of the Auckland Civil Defence and Emergency Management Group
- Administered by Auckland Council under specific legislation (CDEM Act 2002)
- Responsible for delivering emergency management planning and activities at a regional level across the '4 R's' (Reduction, Readiness, Response & Recovery)



**Auckland  
Emergency  
Management**  
Tokonga Mate Ohotata o Tāmaki Makaurau



# Auckland Emergency Management Structure

AEM currently have 33 FTE positions.

There are three teams:

- Capability and Public Awareness
- Resilience
- Response and Recovery



**Auckland  
Emergency  
Management**  
Tokonga Mate Ohotata o Tāmaki Makaurau



# Purpose of Workshop

- Collaborate with you on the content you would like to include in your Local Board Response Plan
- This will become a useful tool to help respond to emergencies



**Auckland  
Emergency  
Management**  
Tokonga Mate Ohotata o Tāmaki Makaurau



# Proposed Structure of your Response Plan

- Purpose of the Plan
- Key Contact lists
- Roles and Responsibilities
- Hazards in your Local Board rohe
- Emergency Alerts and Warning Systems
- Public and Local Board Elected Member alerts
- Emergency Coordination Centre (ECC) activation
- Communication
- Civil Defence Centres, Shelters and Community Emergency Hubs (Definition and lists)



**Auckland  
Emergency  
Management**  
Tokonga Mate Ohotata o Tāmaki Makaurau



# Questions we would like you to consider

## ***Roles, Responsibilities and expectations during a response***

What we have identified and what additional things you might want to see

## ***Risks and Hazards***

What we have, and what you might also want to see in relation to risks and hazards?

## ***Civil Defence Centres and locations (AEM managed and resourced)***

What we have, and what you might also want to see included?

## ***Community Emergency Hubs (LB/community managed and resourced), community groups and connecting with Marae***

What you have in this area that we can capture?

Lastly, do you have any legacy Response Plans or arrangements you would like to share?



**Auckland  
Emergency  
Management**  
Tokonga Mate Ohotata o Tāmaki Makaurau







**Ngā mihi nui | Thank you**



**Auckland  
Emergency  
Management**  
Tokonga Māte Ohotata o Tamaki Makaurau





Te Puni Kōkiri  
MINISTRY OF MĀORI DEVELOPMENT

# Tāmaki Makaurau Our Region





- Tāmaki-makau-rau
- Because so many tribes have lived in the area, there are at least six different explanations for the origin of Auckland's Māori name, Tāmaki. One view is that the name derives from the 18th-century Te Wai-o-Hua chief Kiwi Tāmaki, whose pā was at Maungakiekie (One Tree Hill), pictured here.

# Our Rohe

"When you look past the concrete, the whenua of the past is still there.  
Vibrant maara kai, connection and communication over waterways" Matua Tuks

## Kaipara Harbour – Te Hana - Waitakere Ranges – Manukau Harbour – Franklin – Hauraki Gulf.

Total	4,941 sq km	100%
Urban	1,086 sq km	22%
Rurual	3,855 sq km	78%

01

Tāmaki is considered the most populous urban area in Aotearoa.

02

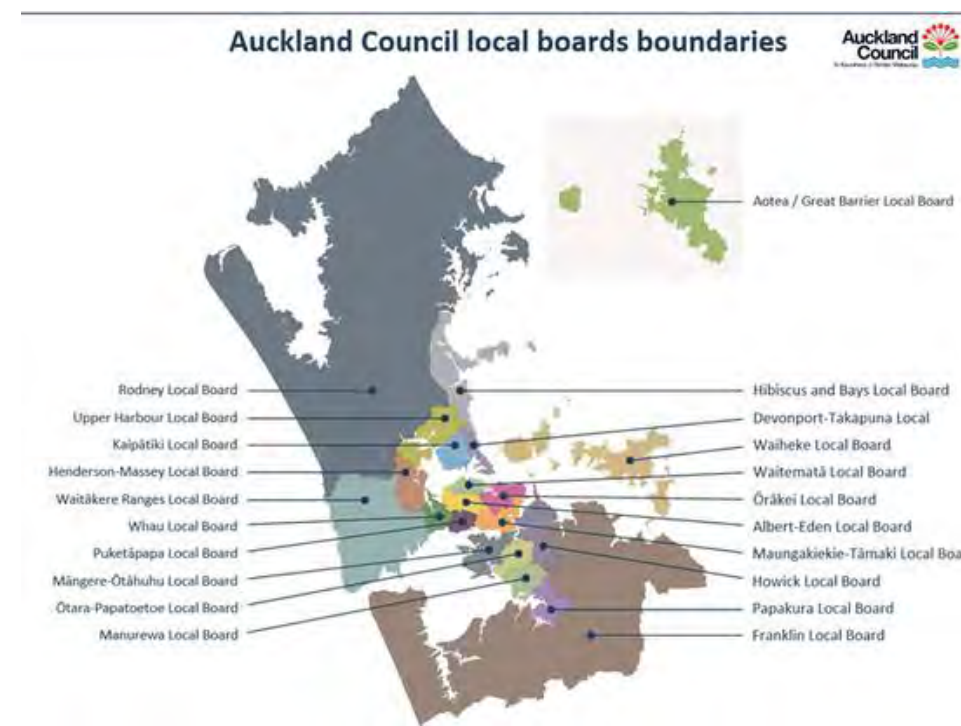
Although people of Māori descent live across the wider Tāmaki region, our Māori whānau population is largely concentrated in **South and West Auckland**, where deprivation is highest.

03

**Auckland the 'Super City'**  
1 council  
170 elected representatives.  
11,108 kaimahi

04

6 of the **21 local board areas** account for nearly half (49.7%) of the Māori population in Tāmaki Makaurau. These are Manurewa, Henderson–Massey, Papakura, Ōtara–Papatoetoe, Māngere–Ōtāhuhu and Franklin.



# Our People

"He aha te mea nui o te ao? He tāngata, he tāngata, he tāngata"



## 26.9% of Māori live here

2018 (181,194). **Mana whenua** comprise 18% of Auckland's Māori population, whereas **mātāwaka** make up approximately 68%.

## We are 11.5% of AKL

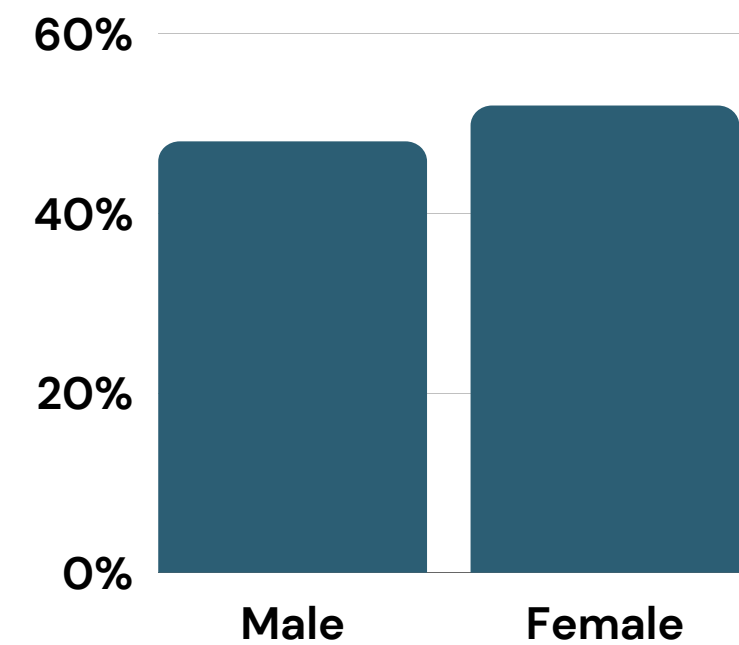
Māori	181,194	11.5%
Pacifica	243,966	15.5%
Pakeha	841,386	53.5%
Asian	442,674	28.2%

## We are Young

The Māori population is fast growing and young. By 2038 an estimated 250,000 Māori will live in Tāmaki Makaurau.

**0-14 years 31.8%**  
**15-64 years 63.2%**  
**65+ years 5%**

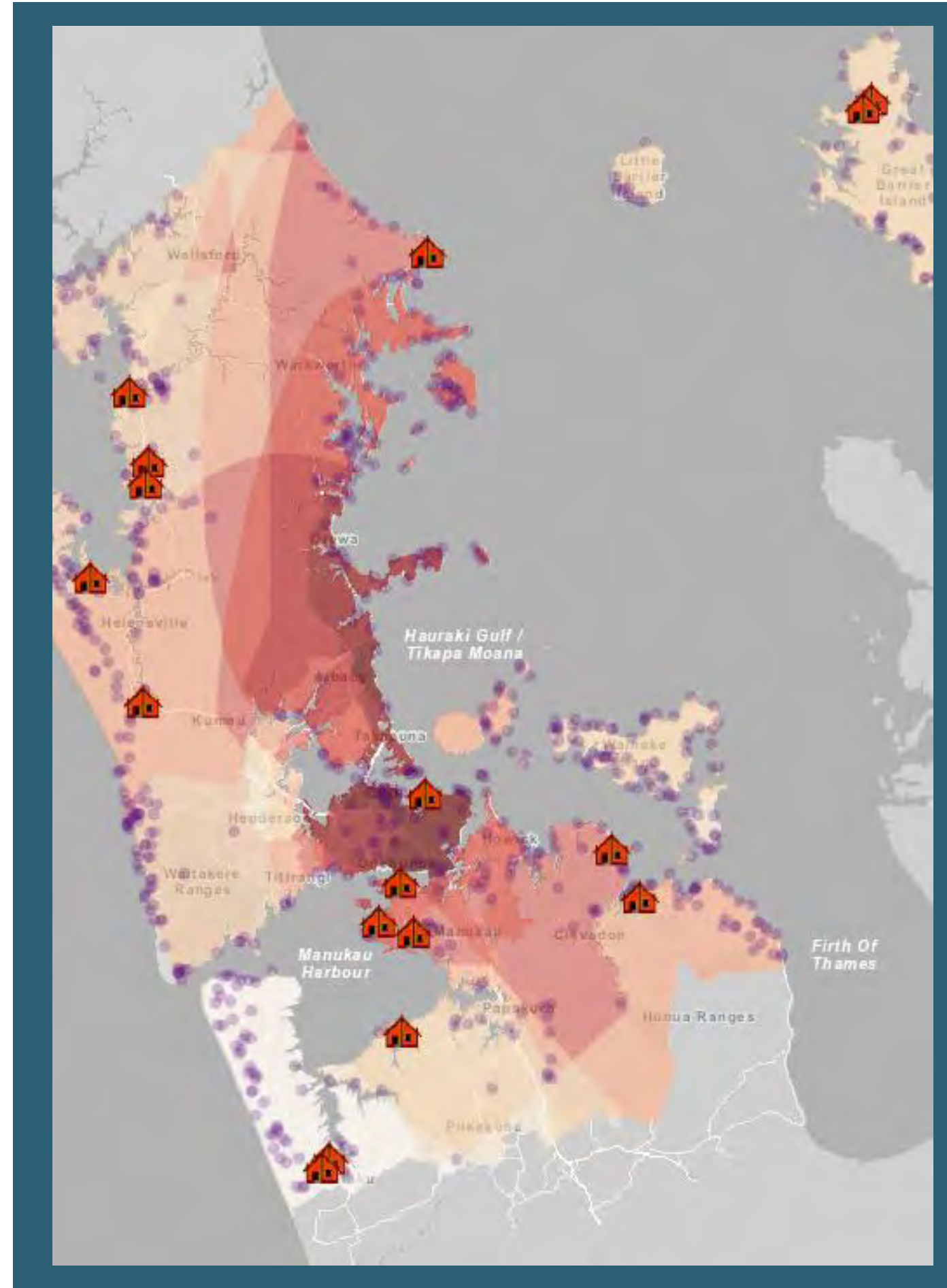
## Wāhine



# Iwi

represented in  
Tāmaki Makaurau

- Ngāti Wai
- Ngāti Manuhiri
- Ngāti Rehua Ngāti Wai ki Aotea
- Te Rūnanga o Ngāti Whātua
- Te Uri o Hau
- Ngāti Whātua o Kaipara
- Ngāti Whātua Ōrākei
- Te Kawerau ā Maki
- Ngāti Tamaoho
- Te Ākitai Waiohūa
- Ngāi Tai ki Tāmaki
- Ngāti Te Ata Waiohūa
- Te Ahiwaru Waiohūa
- Waikato–Tainui
- Ngāti Paoa
- Ngāti Whanaunga
- Ngāti Maru
- Ngāti Tamaterā
- Te Patukirikiri.



# Marae

Opportunities to become **self-sustaining, thriving hubs for Māori and the wider community**. More work needs to be done in this area to realise **marae aspirations** – moving away from responsive urgent assessment-based investing to visioning and long-term planning.

## 68 Marae

- 26 Mana Whenua Marae
- 15 Mātāwaka / Taurahere
- 27 Institutional



# Our vision, purpose and roles

## Our purpose and roles

While all parts of the public sector have collective responsibility for improving outcomes for Māori wellbeing, we are government's principal policy advisor on Māori wellbeing and development.

Our core roles are:



**Empowering whānau** to succeed in their goals and aspirations.



**Providing a strategic voice** on wellbeing in government decision-making.



**Investing in innovation and capability** at an iwi, hapū and whānau level.



**Monitoring and challenging** other agencies to deliver better results for Māori.

## Our vision: Thriving whānau

When whānau are thriving, so do their communities, hapū, iwi and all of Aotearoa.

## What we do



**Leading policy advice** to government on strategic issues central to Māori wellbeing and development.



**Monitoring outcomes** for Māori, evaluating our effectiveness and the effectiveness of other agencies to improve outcomes for Māori.



**Advising on and managing investments** in innovative services, programmes, and capability for Māori.



**Sustaining local relationships** with iwi, hapū and whānau, to inform policy and service design, and connecting Māori with government agencies.



**Influencing and supporting** public sector agencies and other organisations to focus on things that make the biggest difference based on evidence.

# Our Value Proposition

We bring the following attributes to the public sector as we work to achieve the Government's priorities:

- We are the principal connector between the Crown and whānau, hapū and iwi.
- We invest with whānau, hapū and iwi to achieve their aspirations.
- Together, we design and enable innovative approaches to accelerate whānau, hapū and iwi development.
- We use our knowledge to influence the public service to lift its performance for whānau, hapū and iwi.



## Te Puni Kōkiri Strategy

Our refreshed strategic framework provides a line of sight between our vision, our purpose, our role, our three strategic priorities and our nine focus areas that best position the Ministry for strategic impact. Underpinning this are our values that reflect how we work within Te Puni Kōkiri, across Government, with whānau, hapū and iwi Māori, and Māori entities.





## Housing



8.2% Māori home ownership in Tāmaki Makaurau  
Higher experiences of crowding in households



3,810 households in Tāmaki Makaurau on the Public Housing Register where the lead applicant was Māori  
50% of applicants for public housing in Tāmaki Makaurau are Māori



1,020 Māori in Tāmaki Makaurau were granted an Emergency Housing - Special Needs Grant  
50% of people in Tāmaki applying for Emergency Housing-Special Needs Grants are Māori



## Enterprise



1389 Māori Pakihi in Tāmaki Makaurau  
3795 registered sole traders in Tāmaki Makaurau



1890 significant employers of Māori in Tāmaki Makaurau



Estimated \$12.5 billion of Māori asset base is in Tāmaki Makaurau  
Nearly 1/5th of the Māori Asset base can be found in Tāmaki Makaurau  
Over 60% of the Māori asset base in Tāmaki is made up of rental and real estate, transport and warehousing and manufacturing and construction



## Employment



86,882 Māori employed in Tāmaki Makaurau  
9.4% of total employment in Tāmaki Makaurau  
8% unemployment rate for Māori in Tāmaki Makaurau



**Higher concentration** of Māori in **low-skilled labour** positions than Non-Māori  
Māori in Tāmaki Makaurau have a **higher concentration** of employment in professions that have **low growth rates**.  
Earning on average **\$6,000 less** than the average total income, and **\$15,000 less** than the average Pākeha income



48% of Māori students are leaving school with NCEA level 3



Te Ao Māori

Te Whare o te Reo Mauri Ora and Broadcasting

Te Pae Tawhiti: Wai 262

Te Taiao

## Tāmaki Māori Land Ownership

**239** Governed Land Blocks

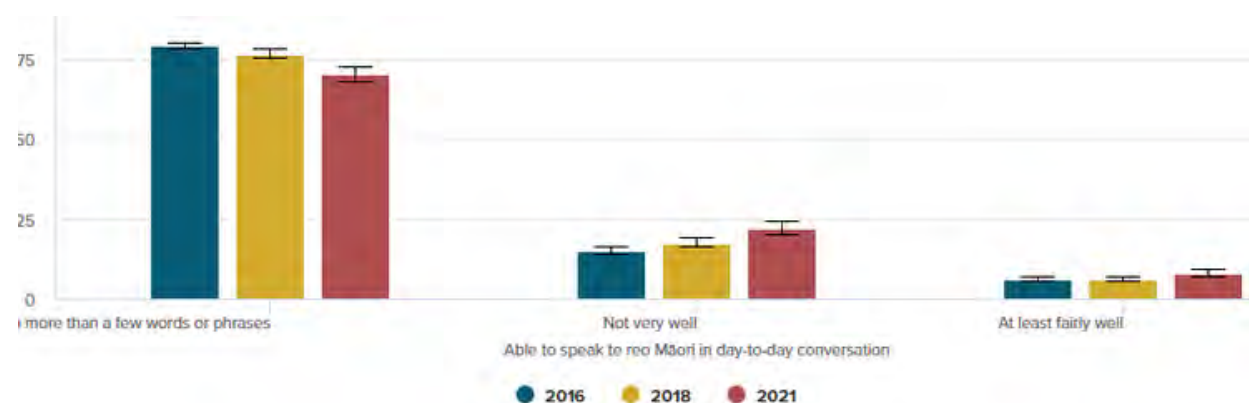
**339** Ungoverned Land Blocks

**85.5%** Benefactors Enquiries in Tāmaki affiliated outside our region.

## Te Reo Māori in Tāmaki Makaurau



Almost **25%** of Māori in Tāmaki Makaurau speak Te Reo as a first language



## Hauraki Gulf Forum

- 4000 km<sup>2</sup>
- Established by the Hauraki Gulf Marine Park Act 2000 (the Act).
- Requires a constituent forum made up of Local Bodies (Auckland, Thames Coromandel, Waikato District, Matamata Piako) and Ministers of DoC, Fisheries and TPK.
- The Act also requires 6 Tangata Whenua representatives
- The Regional Office (the Director) represents the MfMD on the forum.
- The MfMD as a constituent party in the Act and as such is required to provide a percentage of the operating costs to the forum. Currently this is about \$37,000 per annum.
- Tangata Whenua are not required pay a percentage of operating costs.

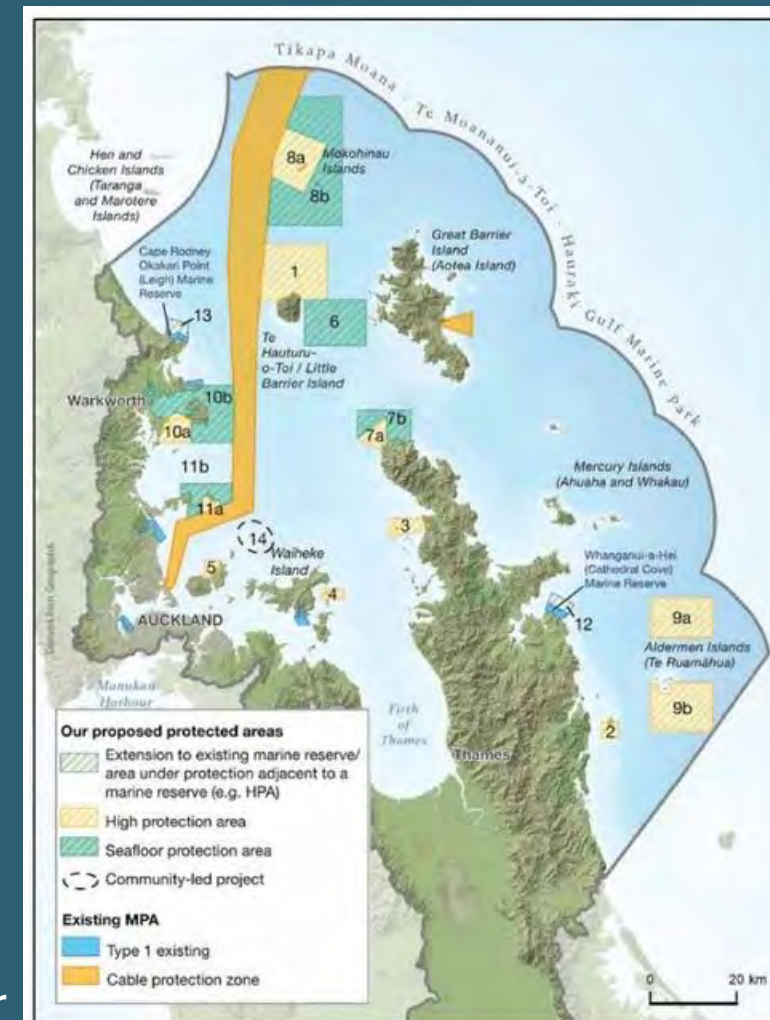


Figure 1: Locations of the protected area proposals that we will engage and consult on.



Equitable & effective government performance for Māori

Whānau-centred Approaches  
Lead Māori Public Policy  
Māori Wellbeing Monitoring

" A Spirit of Service is identified by the Public Service Act 2020 as the fundamental characteristic of the Public Service. The Act requires Public Service leaders and boards of Crown agents to preserve, protect and nurture the Spirit of Service to the community that all public servants bring to their work

# Government Presence



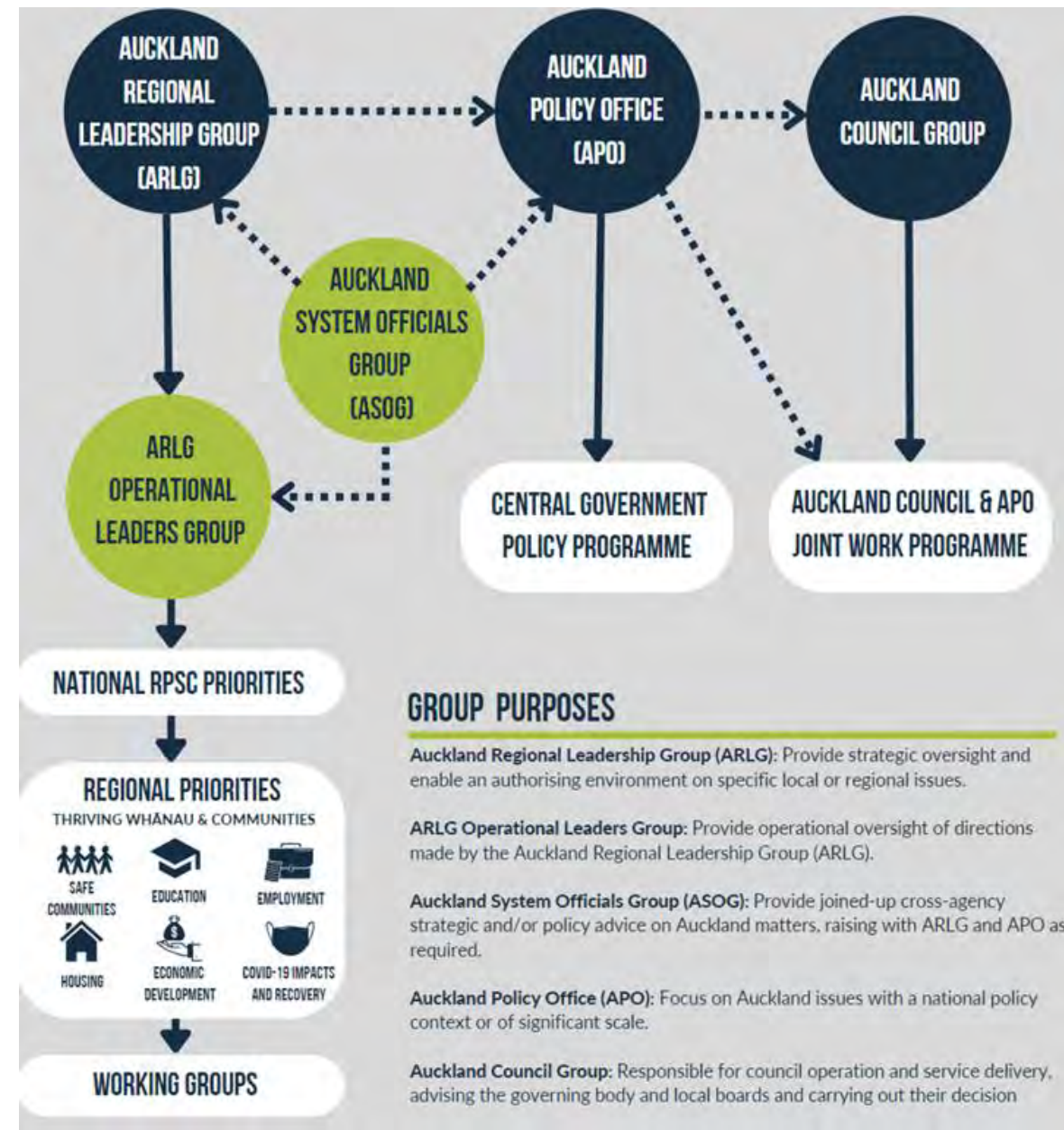
TPK Regional cost centre is \$3.5 million vs \$40 Billion investment across all ministries for Tāmaki Makaurau.

# 25%

All Ministry Agencies have a regional presence, majority based out of the APO Office. 25% Public Service Operations are here in Tāmaki.

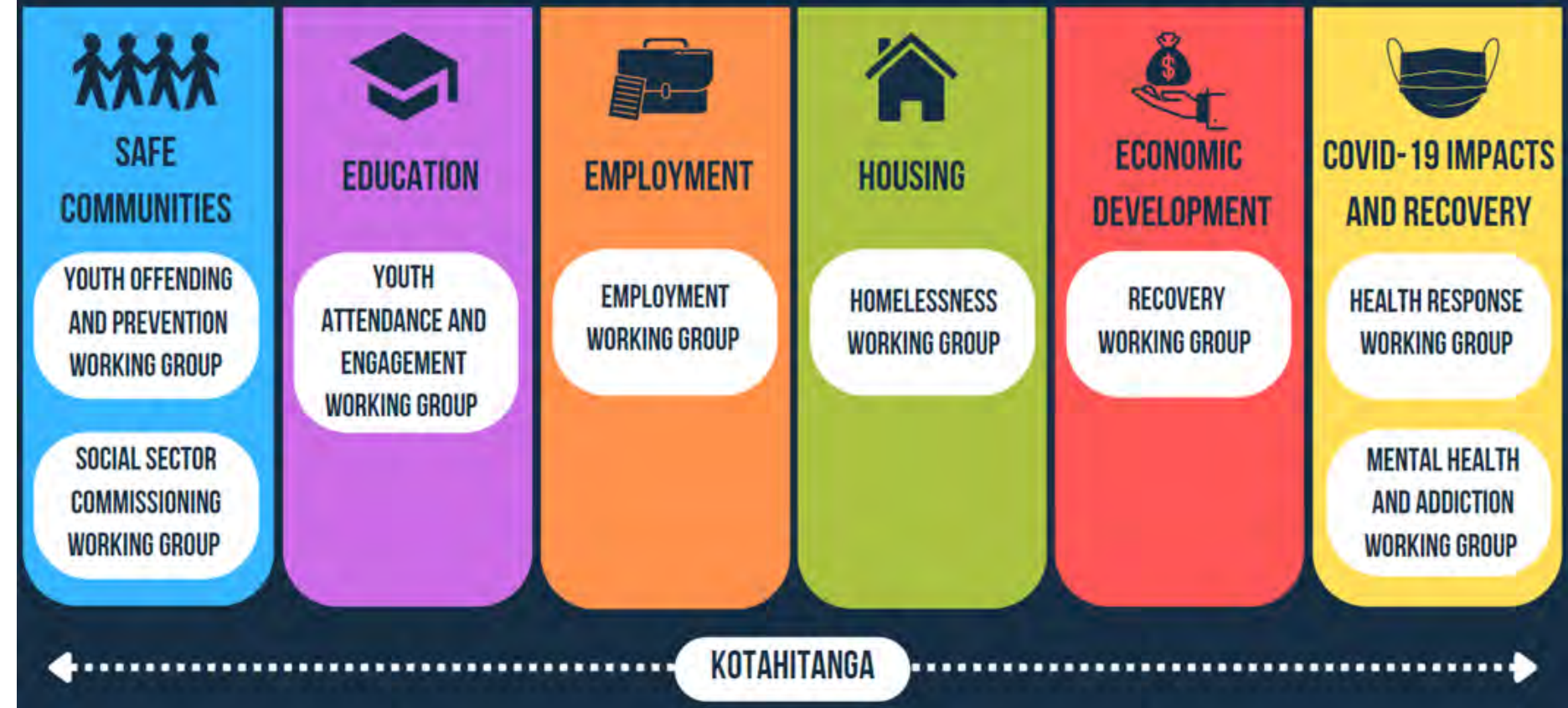
# Whole of Government

as example Auckland Regional Leadership Group



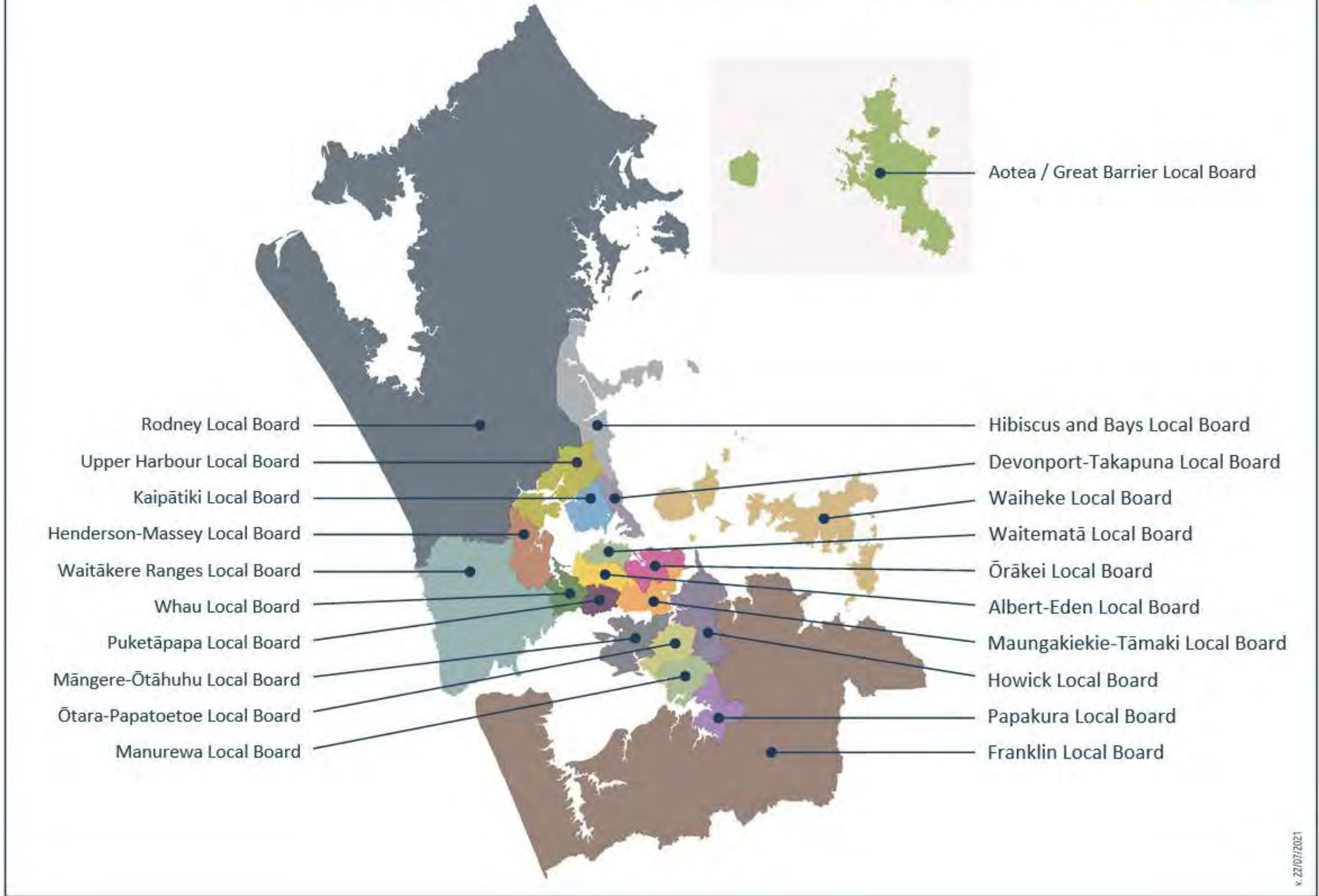
# TĀMAKI MAKĀURAU REGIONAL PRIORITY WORKING GROUPS

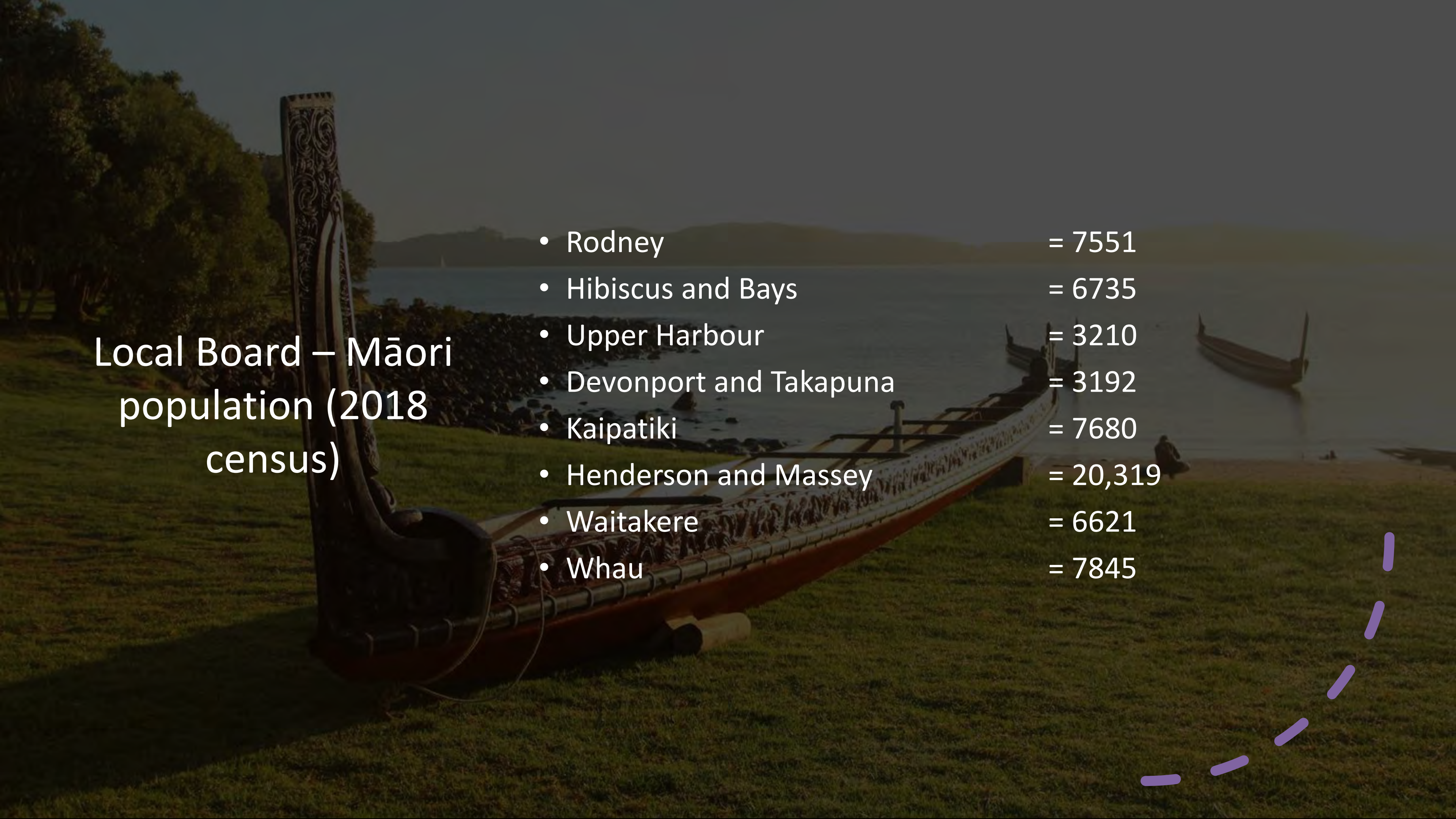
## THRIVING WHĀNAU & COMMUNITIES



# LOCAL BOARDS

## Auckland Council local boards boundaries





Local Board – Māori  
population (2018  
census)

- Rodney = 7551
- Hibiscus and Bays = 6735
- Upper Harbour = 3210
- Devonport and Takapuna = 3192
- Kaipatiki = 7680
- Henderson and Massey = 20,319
- Waitakere = 6621
- Whau = 7845



# QUESTIONS



**Te Puni Kōkiri**  
MINISTRY OF MĀORI DEVELOPMENT

# Environmental Services Work Programme:

- Pest Free Kaipātiki
- Kaipātiki Project

Mary Stewart – Senior Conservation Advisor

May 2023





# PFK Vision and Programmes

PFK Vision:

Kaipātiki - a place where community and the natural environment flourish

PFK Purpose:

To inspire, educate and resource people to make positive change in our natural environment and community



# Shore Actions Commitment to Community and Environment

✉ info@shoreaction.org.nz



Shore Action  
www.shoreaction.org.nz

[Home](#) [Meet The Team](#) [Our Plan](#) [Contact Us](#) [Donate or Get Involved](#) [News](#) ▶



## ACTION ON PARKS & ENVIRONMENT

- Protect and enhance our environment.
- Continue to increase pest-free initiatives and education via Pest Free Kaipātiki, Kaipātiki Project and park volunteer groups.
- Continue bush track upgrades and protect our precious kauri from dieback disease.
- Greening of Kaipātiki, with more park and street trees.
- Action on Little Shoal Bay flooding and inundation.
- Clean streams, ponds and Wairau Estuary.
- New headland regional park - transform and unify Chelsea Estate Heritage Park, Chatswood Reserve and Kauri Point Centennial Park.
- No park sales!



## ACTION ON PLAY

- Continue upgrading and maintaining our playgrounds and sports facilities.
- More shadesails over playgrounds to protect our tamariki.
- Build new splashpad, basketball courts and pontoons.
- Continue to fund the family-friendly Summer Fun play in our parks and Winter Fun play in our halls.



## ACTION IN OUR COMMUNITY

- Vibrant and safer town centres.
- Support our sports clubs, volunteers, youth, cultural groups, community houses and network hubs.
- Continue to champion the Northcote town centre redevelopment, with new community building, town square, parks and connections.
- Support increasing public art throughout Kaipātiki.
- Support the Beach Haven marae proposal.
- Protect our heritage and special character areas. Keep developers within the zoning rules.



# Investment Enables Partnership and Delivery



## Kaipātiki Urban Ngahere

Action Plan 2021



**NATURE SPACES AND TRAILS**  
KAIPĀTIKI LOCAL BOARD, AUCKLAND



## Kaipātiki Open Space Network Plan 2022-2032



## AUCKLAND PLAN 2050

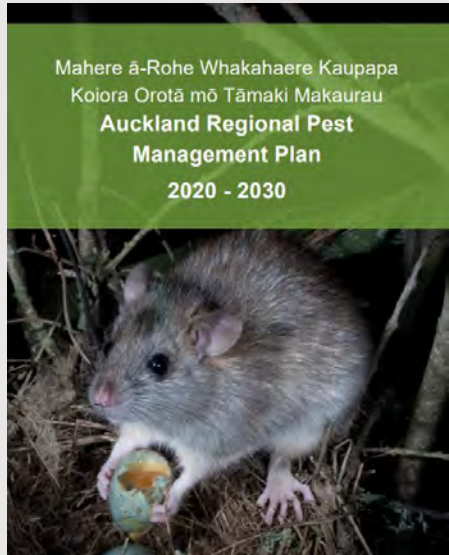


## TE MAHERE Ā-ROHE O KAIPĀTIKI 2020 Kaipātiki Local Board Plan 2020



## BIRKENHEAD WAR MEMORIAL PARK Masterplan

August 2019 Rev D - Local Board Adoption



## Mahere ā-Rohe Whakahaere Kaupapa Koiora Orotā mō Tāmaki Makaurau Auckland Regional Pest Management Plan 2020 - 2030



## Kaipātiki Climate Action Plan

February 2023, Version 1.0





# PFK and KLB Partnership

## Kaipātiki Local Board Plan outcomes

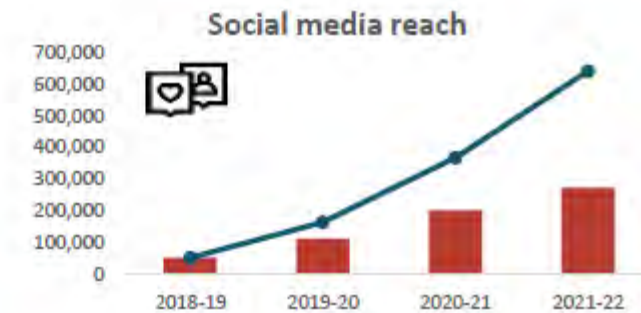
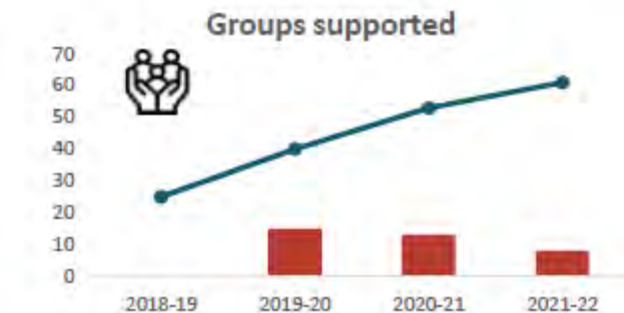
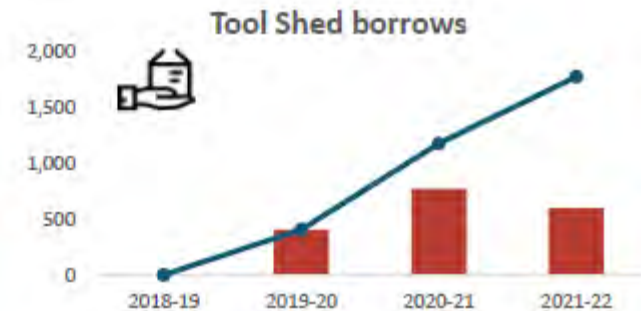
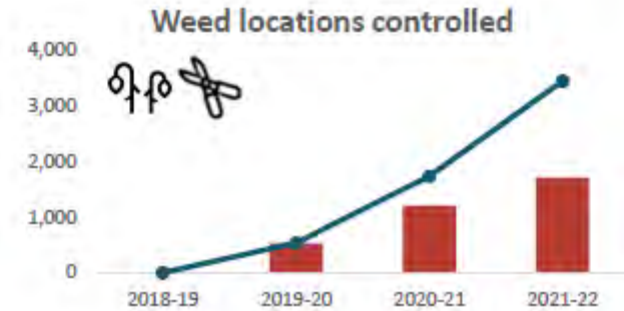
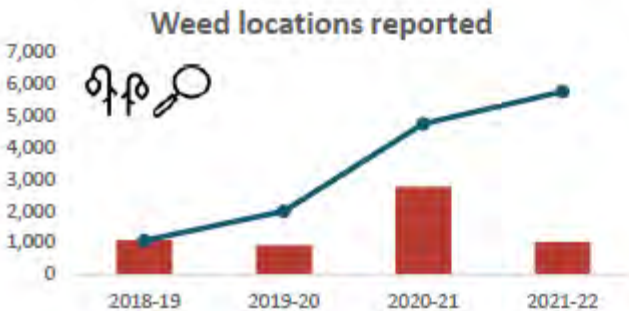
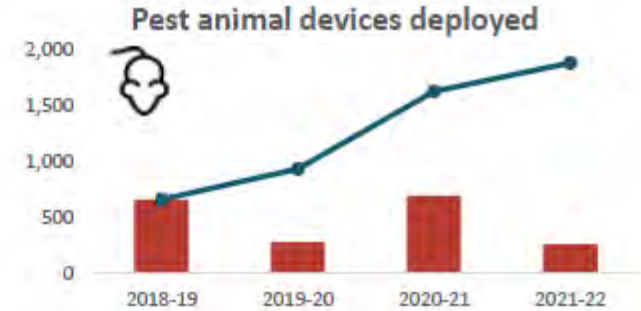
Local board outcome	Local board objective
<b>Belonging and wellbeing – Our people are involved in the community, socially connected to one another, and supported to be active, creative, resilient and healthy</b>	Individuals and communities have a high level of wellbeing
	Local community organisations lead the delivery of services to our communities
	Opportunities to participate in the arts and sport are available and accessible
	Our children and young people are included in decision-making and are empowered to effect change
	Our diversity is a strength that we nurture and celebrate as we come together
<b>Environment – Our natural environment is protected and restored for future generations to enjoy</b>	Our heritage is protected and celebrated
	Our birds and other native wildlife flourish with fewer pest plants and animals
	Our natural environment, harbours and waterways are protected and enhanced, in partnership with mana whenua and our community
	Our people are environmentally aware and work together to live sustainably
	Our urban forest (ngahere) is protected and enhanced through the greening of Kaipātiki
	Support coastal communities to be prepared for the impacts of a changing climate
	Local and international visitors are attracted to our area

Local board outcome	Local board objective
<b>Opportunity and prosperity – Our people can buy local, live local and work local</b>	Our business community encourages and supports local sustainable business practices and initiatives
	Our village centres and small local precincts are enhanced
	The Wairau Valley and our other business areas provide our people with the opportunity to work locally
<b>Places and Spaces – Our built environment is high quality, vibrant, well-maintained, reflects the culture and heritage of Kaipātiki, and meets our people's needs</b>	Our aquatic, recreational, art and community facilities are enhanced to meet the needs of our growing and changing population
	Our parks, playgrounds, and public spaces are SunSmart, high quality, accessible, and well maintained
	Our town centres of Birkenhead, Glenfield and Northcote are strengthened to be vibrant and safe hubs that meet the needs of our people
	Quality and sustainable urban development occurs that creates spaces that are safe, healthy, multi-functional and have a low impact on the climate
<b>Transport and connections – Our people have many transport options and can easily and safely move around and find their way</b>	Our public transport network is affordable, convenient, frequent, environmentally conscious and accessible – connecting people to where they need to go
	People have more travel choices to get to work, school or go about their daily lives
	The Kaipātiki Connections Network Plan delivers commuter and recreational walking and cycling links through the local board area



# PFK Reporting measures past 4 years

All data from reporting periods 1 July 2018 to 30 June 2022 collected by Pest Free Kaipatiki Restoration Society. Red bars show Annual totals; Blue Lines show cumulative totals.

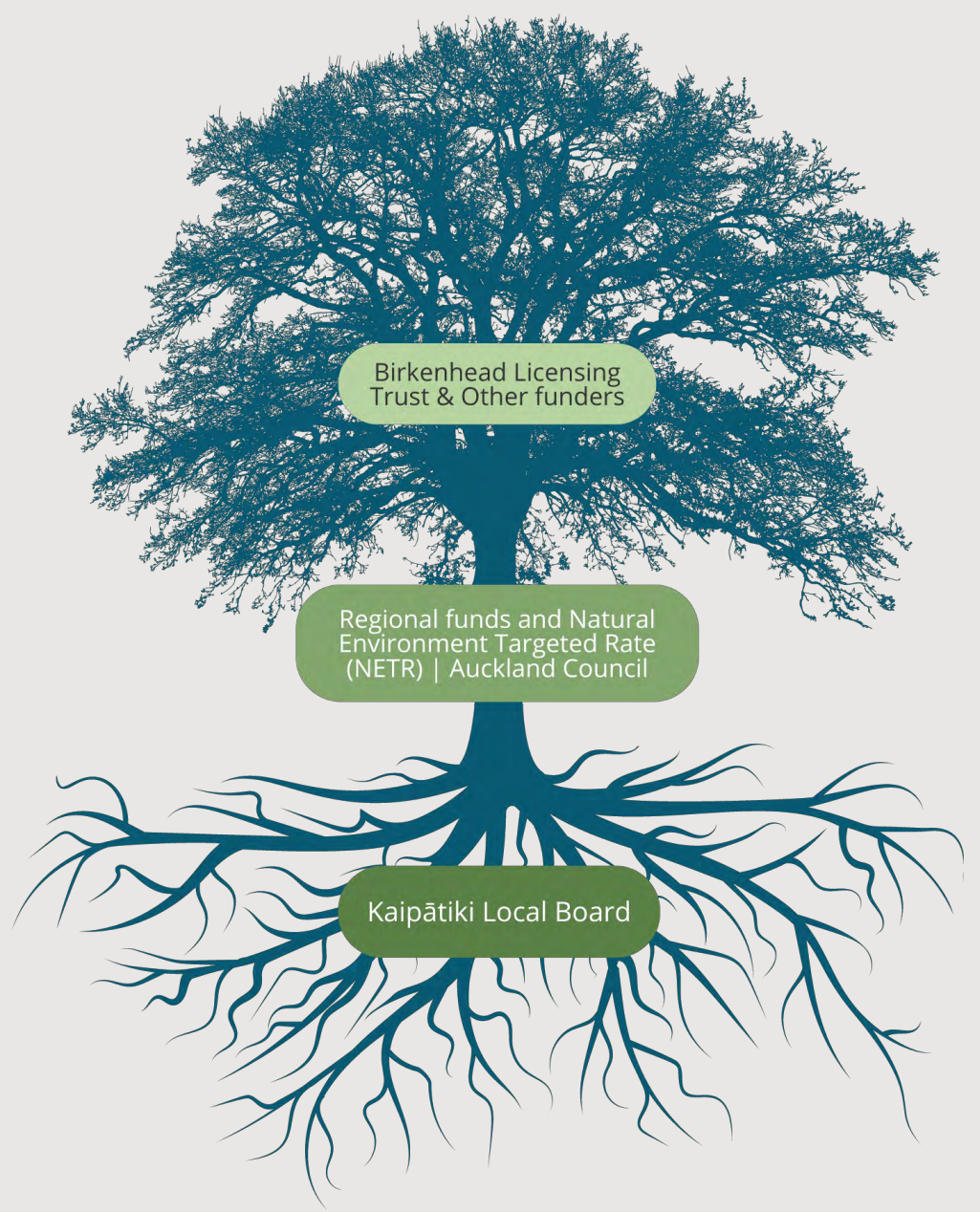


# Snapshot of May 2023. How PFK connect Kaipātiki Community

1. KRN, Council & KRN network meeting (tracks, slips and communications)
2. Toolshed volunteer prep day
3. Street gatherings
4. Working bee - weeding events
5. Library Green Clinics
6. Kaumatua kuia and reps of Ngāti Whātua Ōrākei, Ngāti Ki Tamaki Trust, Ngāti Paoa
7. Hit Squad public volunteering
8. Fortnightly toolshed open days
9. Planting days
10. Volunteer hui
11. Drop in public/visitors at HQ
12. Pippins and Guides (Girl Guiding)
13. Volunteer working bee at HQ (Twice weekly)
14. PFK Schools programme in 7 different schools - teachers, principle & students
15. Door knocking & surveying - Buffer programme
16. AC Environmental Services Team Meeting presentation
17. New reserve site visit with community coordinator (Ayton)
18. Kaurilands summit presentation and attendance- iwi and key stakeholders in the KD and MR space
19. Corporate volunteering



# Funding Picture 2022 /23



Ecologist (Restoration Advisors x2)  
\$90,000

BFA & Buffers  
Kauri dieback and myrtle rust  
Finance manager CCFG  
Reserve Management (Big 5)  
\$352,440

Core staff and operations, PFK  
programme, Greening of Kaipātiki  
and Schools  
  
\$200,000  
+\$10,000 KLB Climate Action Grant

# Funding Picture 2023 /24



Birkenhead Licensing Trust & Other funders

Regional funds and Natural Environment Targeted Rate (NETR) | Auckland Council

Kaipātiki Local Board

Ecologist (Restoration Advisors x2)  
\$120,000 confirmed

BFA & Buffers  
Kauri dieback and myrtle rust  
Finance manager CCFG  
Reserve Management (Big 5)  
Tools & Resources  
\$0 Confirmed

Tikanga o Te Taiao  
RENH pest plant role (end Feb)  
RENH teaching gardens  
\$55,500 confirmed

Core staff and operations, PFK programme, Greening of Kaipātiki and Schools

\$246,348 requested



# Kaipātiki Local Board funding request

Items	Cost
Manager – Annie Project Administrator – Tania Community Activator - Kelly	\$141,874
Operational expenses – staff support and building – keeping the lights on	\$25,814
Programme engagement – halos, supporting volunteer groups, events, incorporating Mātauranga Māori	\$23,940
Schools engagement – Angi and school specific resources	\$9,120
Greening of Kaipātiki Programme – Bella and trees	\$45,600
Total	\$246,348



# Pest Free Kaipātiki Aspirations

- PFK is sustainable long term.
- Forge ahead to facilitate better communications and increased efficiencies between council staff, contractors and reserve groups.
- Continue to grow the momentum of learning and integration of Mātauranga Māori within PFK.
- Continued growth in tree cover, volunteers, birds community connections etc...
- Reduction in predators, pathogens and weeds .
- Engage the community in climate change mitigation actions.
- Inspire our community to care.



# Kaipātiki - a place where community and the natural environment flourish



# Environmental Services Work Programme:

- Pest Free Kaipātiki
- Kaipātiki Project

Mary Stewart – Senior Conservation Advisor

May 2023





**Kaipātiki**  
Project

share in nature's revival

# For a sustainable future

---

- Vision and programmes
- Achievements
- Funding 22-23, 23-24
- Showcased example





# We create memories for a sustainable future

---

“Our future thinking is highly dependant on our past experiences.”

*Dr David Hallford - clinical psychologist & researcher  
Deakin University, Victoria*



**Kaipātiki**  
share in nature's





# Kaipātiki Project

share in nature's revival

# NGĀ MOEMOEĀ Our Vision

## OUR VALUES

### Manaakitanga

Each of us seeks to encourage and uplift all those we welcome and work with.

### Whanaungatanga

We nurture relationships and reciprocal connections that build belonging to community and place.

### Kaitiakitanga

Developing shared caring for and responsibility to our local places.

## OUR CULTURE & PRACTICE

- Honour Te Tiriti o Waitangi
- Embrace Te Ao Māori & Mātauranga Māori
- Seek authenticity of local place
- Act with transparency
- Lifelong learning for sustainability
- World class thinking and delivery
- Drive systemic change
- Team and volunteers' contribution valued & recognised



# TŌ MĀTOU PĀNGA

## Our Impact

2022		2021	% change
<b>42,044</b>	eco-sourced, chemical-free native plants grown (89 species)	44,959	↓ -6%
<b>129</b>	nursery & teaching garden regular volunteers	123	↑ 5%
<b>3,795</b>	nursery & teaching garden regular volunteer hours	5,850	↓ -35%*
<b>111</b>	bush restoration and planting days	75	↑ 48%
<b>862</b>	restoration volunteers	830	↑ 4%
<b>3,083</b>	restoration volunteer hours	3,554	↓ -13%*
<b>9,560</b>	kg of pest plants removed	8,400	↑ 14%
<b>17</b>	stream sites monitored	14	↑ 21%
<b>708</b>	participants across 84 experiential learning workshops	1,632	↓ -57%*
<b>3,475</b>	Compost Collective workshop participants across 324 workshops	6,081	↓ -43%*
<b>241</b>	tonnes of waste diverted	419	↓ -42%*
<b>35,846</b>	website visits (5,403 Facebook followers)	32,978	↑ 9%



**991**  
Volunteers



**708**  
Workshop participants



**42,044**  
Plants grown

**111**

Bush restoration & planting days

\*Due to COVID restrictions and limitations on gathering we needed to manage volunteer numbers, resulting in a reduced number of regular volunteers allowed onsite. We also ran a reduced number of volunteer sessions and workshops due to lockdowns.





# WHAKAHOU TAIAO Regenerative Environments

## Regenerative Environments



**DEREK CRAIG**  
Restoration Nursery  
Manager



**CRYSTAL ASTON**  
Nursery Assistant



**NEIL HENDERSON**  
Kaiwhakahaere Taiao |  
Restoration Activator



**TAKUTAI MOANA  
WATTS**  
Kaiawhina Kaitiaki |  
Restoration Assistant



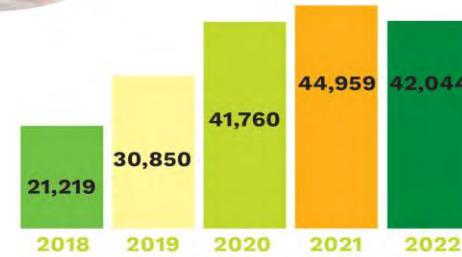
**MARIA VALKOVA**  
Restoration Group  
Co-ordinator



**JAIME CALVERT**  
Regeneration Team  
Member



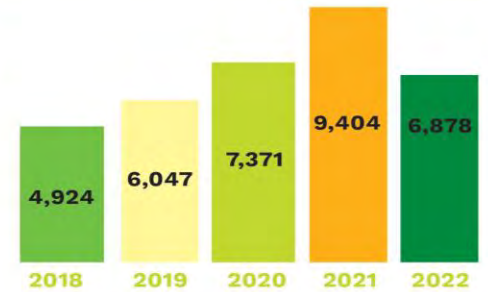
**BRETT STANSFIELD**  
Freshwater Ecologist  
(contractor)



native plants grown  
since 2018  
**180,832**



volunteer hours since  
2018 valued at **\$818,858**  
based on NZ living wage  
at \$23.65 per hour





NGĀ MAHI AKO

# Experiential Learning for Sustainable Living

## Sustainable Living



**JUDITH ROSAMUND**  
Teaching Garden  
Co-ordinator



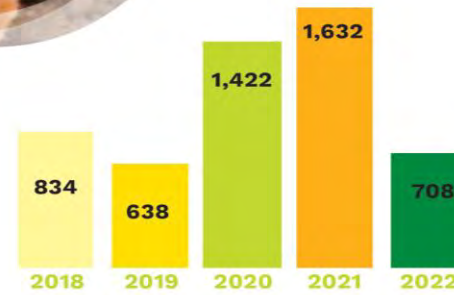
**ROBYN FORRYAN**  
Para Kore Zero Waste  
Activator



**WAIATA RAMEKA-TUPE**  
Kaiāwhina ō Rongo  
Teaching Garden

1e  
ng

n,  
1d  
1000s

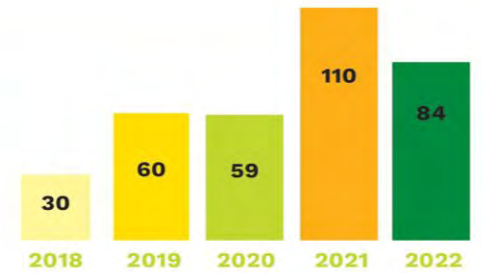


workshop participants  
since 2018

# 5,234

# 343

workshops since 2018





# MAHI TAHI

# Partnering & Engaging to Build Resilient Communities

Partnerships & Engagement

## Communications & Engagement



**SAM TU'ITAHĪ**  
Kaitakawāenga Hāpori |  
Community Activator



**BLANKA ROS**  
Marketing Strategist



**DAN DE KLERK**  
Digital Communications  
& Event Facilitator



**ANNA SHAW**  
Administration Assistant  
& Compost Collective  
Co-ordinator



**ENVIRONMENT  
HUBS AOTEAROA**  
Collaboration for local solutions



# NGĀ MIHI MAIOHA

## Operations & Support



**JANET COLE**  
Manager



**SANDRA ATKINS**  
Operations Manager



**JOANNE KYRIAZOPOULOS**  
Grants & Impact Specialist



**IRINA ZGOBA**  
Cleaner

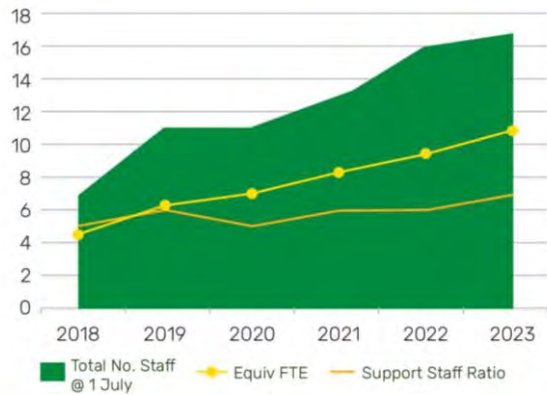
## Core Funding Partners



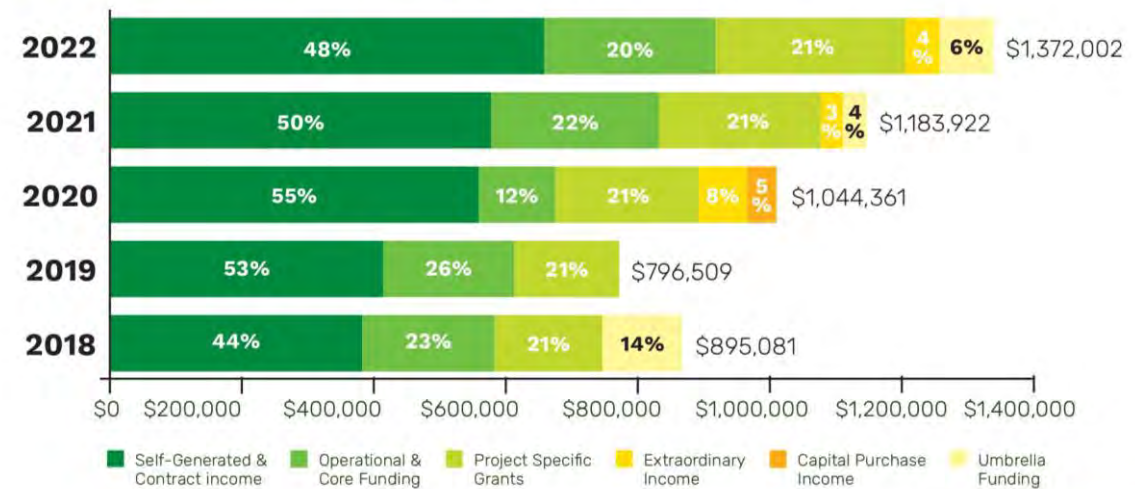
Our activities would not have been possible without your help, support, collaboration and encouragement.

# TĒ TAIKĀKĀ Resilience & Capability

## Staff Growth and Capability



## Income Sustainability - Shows 2018-2022 split of income



# NGĀ WHAKAWHIWHINGA

## Awards & Recognition

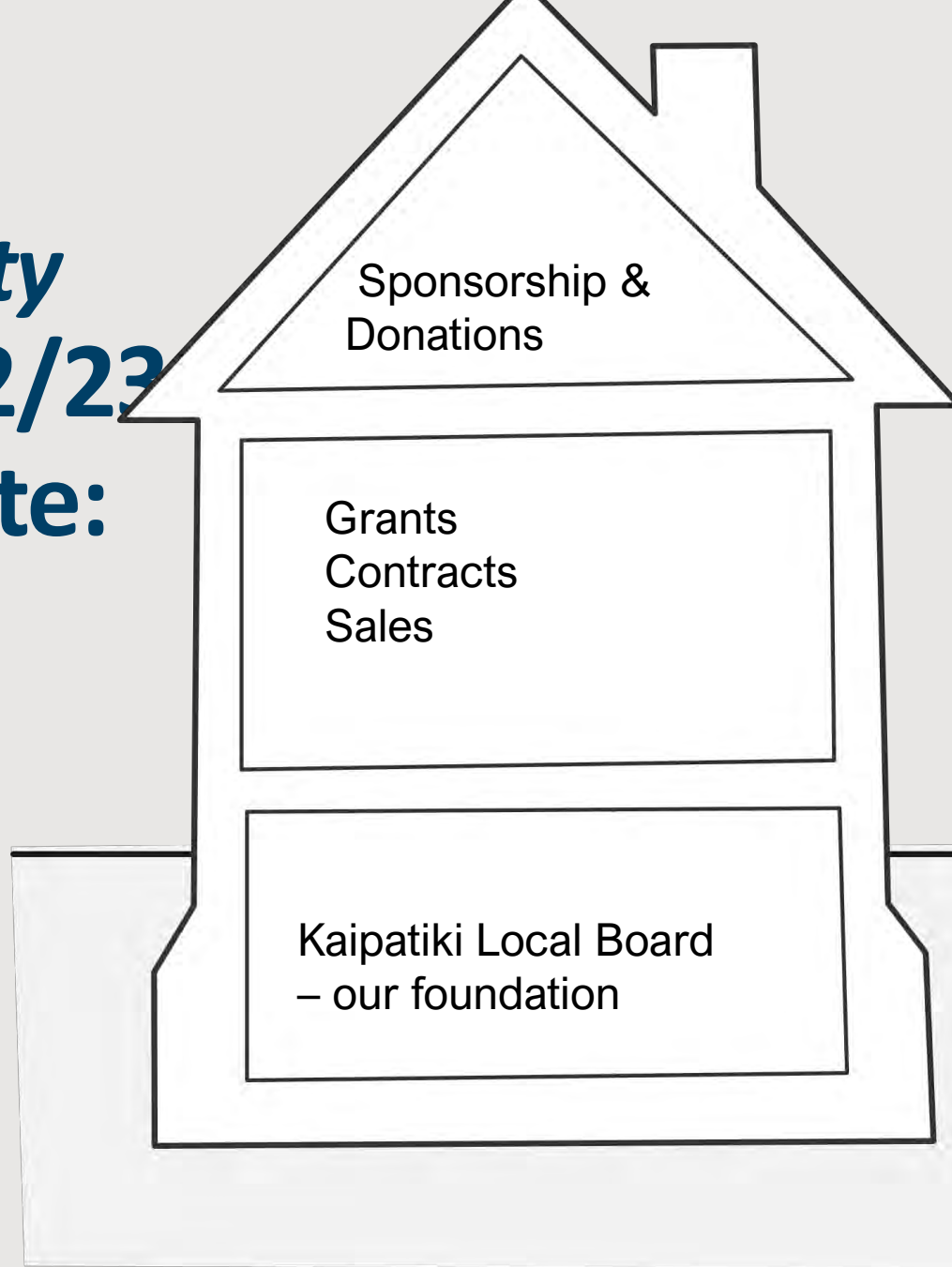
- **New Zealander of the Year 2022**
  - Charmaine Bailie- Winner in Te Toa Taiao o Te Tau / Environmental Hero of the Year
- **Westpac Auckland Business Awards 2022**
  - Kaipātiki Project - Finalist in Excellence in Community Contribution: North & West (Winner announced later today)
- **Volunteering Auckland's LOVE Award 2022**
  - Sam Tu'itahi -Winner of the Leader of Volunteer Engagement Award
- **Sustainable Business Awards 2021**
  - Charmaine Bailie - Commendation in the Sustainability Superstar category
  - Kaipātiki Project - Finalist in the Social Impactor category
- **The Kūmara Awards 2021**
  - Jessie Tonar Scout Reserve regeneration initiative - Award in the 'Saving the World One Place at a Time



# **Building sustainability Funding 22/23**

## **Total to date: \$1.2m**

**Sources:  
5 local boards  
8 AC depts  
2 govt depts  
13 funders  
5 NGOs**



Sponsorship \$12,500  
Donations \$ 35,435

Grants \$574,209  
Contracts \$431,198  
Sales \$118,295

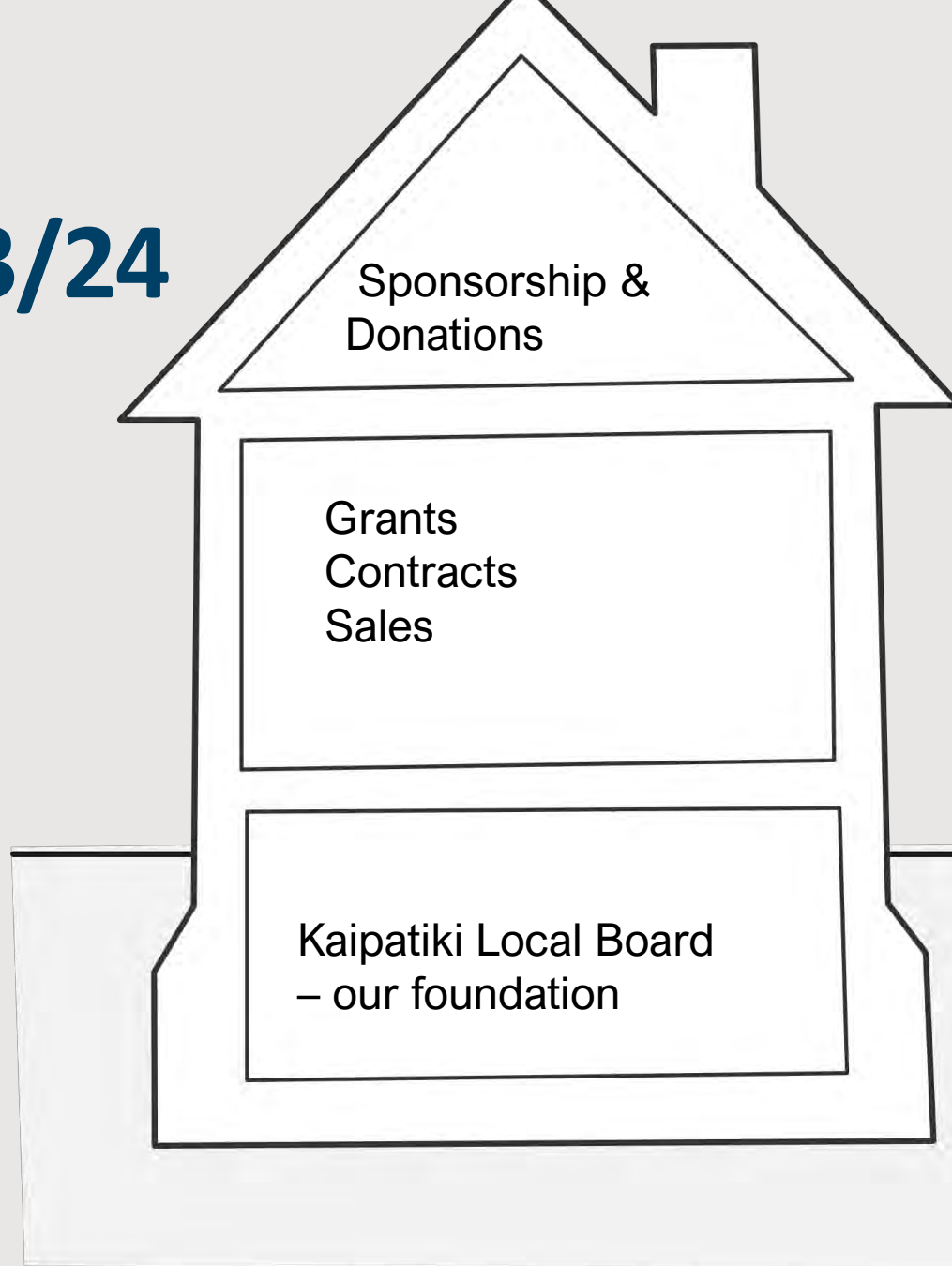
KLB funding – \$100,000  
Core staff and operations  
Hands on Ecology - Eskdale Reserve, native plant nursery and teaching garden  
Ecofest  
Education for sustainability, Kaipātiki Streamcare programme

Tools and resources \$ 5,500



**Funding 23/24**  
**\$550,000**  
**\$942,000?**

**Sources:**  
**5 local boards**  
**8 AC depts**  
**2 govt depts**  
**13 funders**  
**5 NGOs**



Sponsorship ?

Donations ?

Sales ?

Grants \$437,000 *made up of*  
-carry forward \$178,000  
-confirmed \$2000  
-projected \$257,000

Contracts \$505,000 *made up of*  
-carry forward \$30,000  
-confirmed \$340,000  
-projected \$150,000

KLB funding – ?

Core staff and operations

Hands on Ecology - Eskdale

Reserve, native plant nursery and  
teaching garden

Ecofest

Education for sustainability,

Kaipātiki Streamcare programme

Tools and resources ?





# Kaipatiki Local Board funding request

Items	Cost
Environmental hub operations and support – staff support and keeping the lights on	\$25,000
Hands on Ecology: Restoration staff - Eskdale Reserve	\$25,000
Volunteer opportunities – native plant nursery and teaching garden	\$15,000
Education for Sustainability/environmental learning centre staff	\$15,000
Kaipātiki Streamcare programme	\$20,000
EcoFest backyard actions, including online engagement	\$10,000
Skills and capability building	\$10,000
Total	\$120,000

