

Kaipātiki Local Board Workshop Programme

Date of Workshop: Wednesday 8 February 2023
Time: 10.00am
Venue: Boardroom, 90 Bentley Ave, Glenfield

Time	Workshop Item	Presenter	Governance role	Proposed Outcome(s)
11.10am – 12.10pm	Waitematā Harbour Connections	<p>Dave Dunlop Alliance Director</p> <p>Duncan Humphrey Project Director Waitematā Harbour Connections Alliance</p> <p>Katrina Hunt Senior Transport Advisor, Auckland Council</p> <p>Daniel Newcombe Partner Interface Manager</p> <p>Kathryn Martin Communications and Engagement</p> <p>Lucie Timmers Communications & Engagement Lead</p>	<ul style="list-style-type: none"> Keeping informed 	<ul style="list-style-type: none"> Receive update
12.10 – 1.00pm	Lunch			

1.00 – 2.00pm	Auckland Transport - Safe School Speeds – Birkdale School	<p>Marilyn Nicholls Elected Member Relationship Partner (North), Devonport Takapuna & Kaipātiki Local Board Areas</p> <p>Darren Govindasamy Transportation Engineer – Schools, Auckland Transport</p> <p>Stephen Anderton Senior Project Manager, Auckland Transport</p> <p>Sam Smith Senior Engagement Partner, Auckland Transport</p>	<ul style="list-style-type: none"> Setting direction 	<ul style="list-style-type: none"> Define board position and feedback
2.00 – 2.30pm	Break			
2.30 – 5.00pm	Business Meeting			

Next workshop: Wednesday 22 February 2023

22-Feb-23	9.15am	9.50am	Members only time
	10.00am	11.00am	Customer and Community Services - Regional Services and Strategy <ul style="list-style-type: none"> Glenfield Community Centre
	11.00am	11.10am	Break
	11.10am	12.10pm	Infrastructure and Environmental Services <ul style="list-style-type: none"> Climate Action Plan
	12.10pm	1.00pm	Lunch
	1.00pm	2.00pm	Eke Panuku Development
	2.00pm	3.00pm	BID Policy and BID programmes
	6.00pm	8.00pm	Kaipātiki Local Board Community Forum - Kaipātiki Local Board office

Role of Workshop:

- (a) Workshops do not have decision-making authority.
- (b) Workshops are used to canvass issues, prepare local board members for upcoming decisions and to enable discussion between elected members and staff.
- (c) Workshops are open to the public however, decisions will be made at a formal, public local board business meeting.
- (d) Members are respectfully reminded of their Code of Conduct obligations with respect to conflicts of interest and confidentiality.
- (e) Workshops for groups of local boards can be held giving local boards the chance to work together on common interests or topics.

Waitematā Harbour Connections



February 2023



Ngā Iwi Mana Whenua
o Tāmaki Makaurau

Waitematā Harbour Connections



Te Kāwanatanga o Aotearoa
New Zealand Government

Purpose of Today

The purpose of this session is to:

- Provide a high level overview of the project progress and timeframes
- Provide a recap of the project for new local board members
- Outline the consultation proposed
- Seek feedback on key consultation opportunities in the local board area
- Enable an opportunity to answer questions and hear feedback and ideas.

Auckland Harbour Bridge - A key transport connection



Te Kāwanatanga o Aotearoa
New Zealand Government

*Data from Auckland Harbour Bridge Shared Path Options Assessment 2021

Strong project partnership approach



Ngā Iwi Mana Whenua
o Tāmaki Makaurau

Waitematā Harbour Connections



Te Kāwanatanga o Aotearoa
New Zealand Government

Project Introduction

- **Government's announcement January 2022** brought forward planning for a fully integrated transport network.
- **Partnership approach** to progress the next phase of planning work on the Waitematā Harbour Connections.
- **Indicative Business Case phase (IBC)** will build on the findings of the previous business case, and consider relevant updates in policies, context, and related projects including Auckland Light Rail.
- **A nationally significant**, high-volume, strategic corridor providing substantial local, regional, and national benefits.
- **Anticipated population growth in Auckland**, will need to be catered for through the project.
- **Connections will provide a multi-modal system solution** including ongoing Northern Busway enhancements, long-term active modes for people on foot and bikes, freight, rapid transit (such as light rail) and network resilience for drivers.
- **It is inter-generational** – considering longevity, mode shift and climate change outcomes.

Strategic Case

The problems are diverse and are expected to impact at varying scales, ranging more local impacts, to national level.



ACCESS

- **The cause:** Population growth and increasing economic activity
- **The effect:** Increase in travel demand vs bridge access catchment
- **Means for me?:** Bottlenecks and increase travel times, freight movement of goods and services impacts productivity.



TRAVEL CHOICE

- **The cause:** Gaps in infrastructure restricting travel choices available
- **The effect:** Current mode share vs impact on carbon emissions.
- **Means for me?:** Bus unreliability increases, cycling and walking not an option, driving experience worsens, unmet carbon reduction commitments.



RESILIENCE

- **The cause:** Climate events vs detour/unproductive time cost
- **The effect:** Aging asset vs maintenance requirements
- **Means for me?:** Significant impacts notably high wind events impact the way we live, impacting travel reliability across harbour.

Strategic Case

This project brings with it opportunities



- Enable quality integrated urban communities.
- Improved quality of life through better access to more employment, education and health care opportunities across Tamaki Makaurau
- Provide people with more high quality choices to reliably access opportunities across the harbour.
- Reduction in greenhouse gas emissions from the transport network.
- Reduced frequency of disruptions and faster recovery from unplanned disruption events.

Way forward: Multi-Modal

Strategic investigations will include all modes and how they interact:

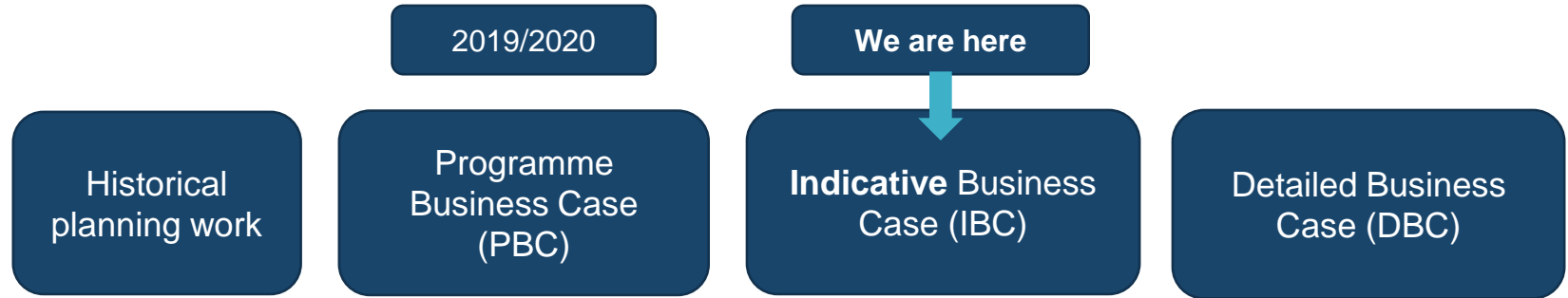
- **Rapid Transit**
- **Active modes**
- **Roading (freight and general traffic)**
- **Northern Busway**

Other strategic investigations include:

- **Resilience improvements including utilities**
- **Future use of existing Auckland Harbour Bridge**
- **Lanes and modes that support freight and services**
- **Emissions reduction**
- **Urban development and land use needs**
- **Funding and financing options**



Business case process



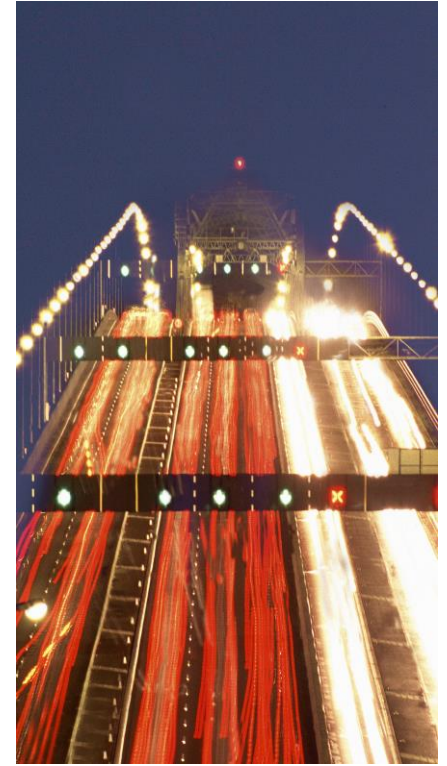
Indicative Business Case 2022 - 2023

IBC will:

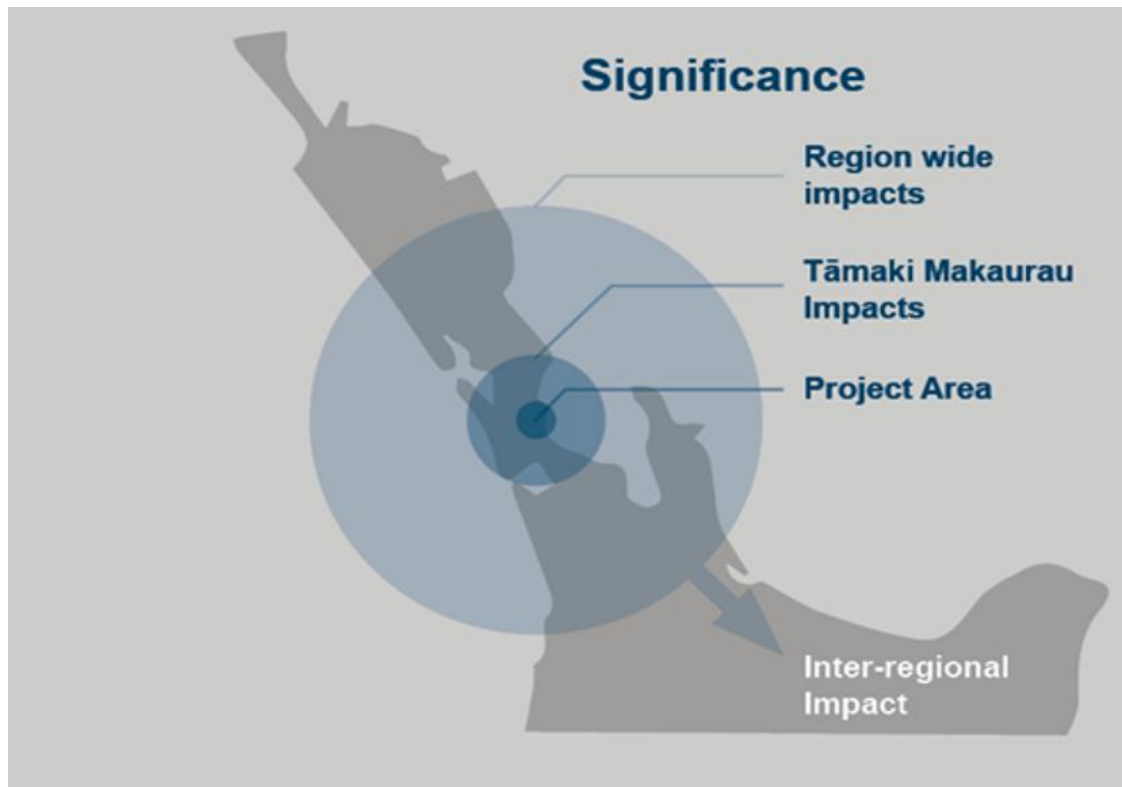
- build on the findings of the previous 2020 business case
- consider relevant strategic policy and planning updates

The IBC will confirm the 'what' by looking at:

- Preferred mode, form and alignment for an additional rapid transit connection
- Preferred form and alignment of the long-term cross-harbour active modes
- Preferred form and alignment of road connectivity improvements
- Preferred timing of these interventions
- Determination of best urban development and land use needs



Significance



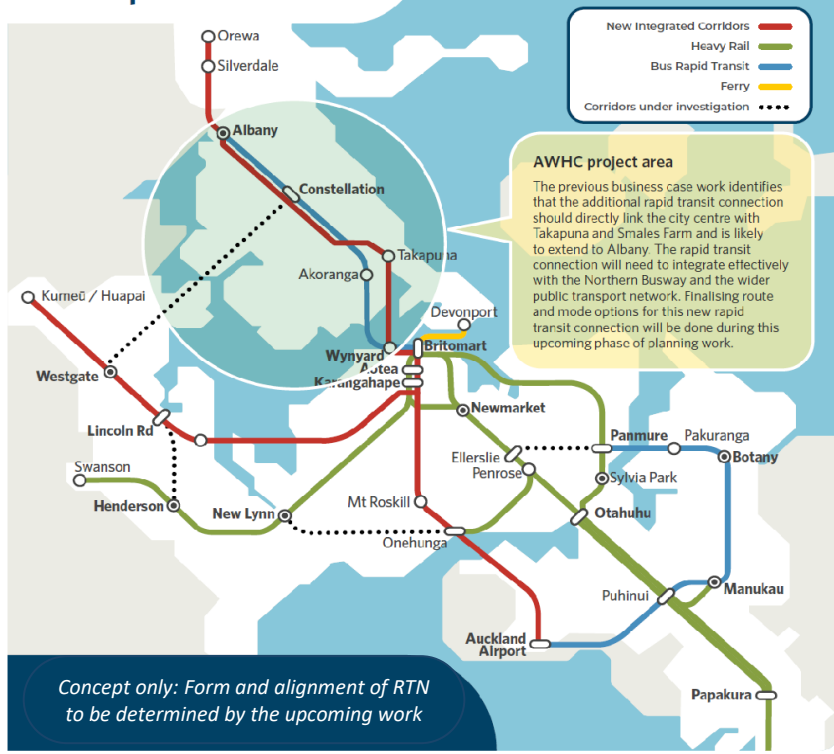
- Project area impacts
- Tāmaki Makaurau impacts
- Region wide impacts
- Inter-regional impacts
- National significance

Part of Auckland's future rapid transit network



Waitematā Harbour Connections is the next stage in expanding Auckland's future rapid transit network. It will improve transport choices and make Tāmaki Makaurau Auckland a better place to live now and for future generations.

Future Rapid Transit Network



Related projects, plans and policies

- Auckland Light Rail
- Emission Reduction Plans
- Northwest Rapid Transit
- Rapid Transit Network Plan
- Northern Busway Enhancements
- Te Tupu Ngātahi – Supporting Growth (North)
- Auckland's Transport Emissions Reduction Pathway (TERP)
- Te hau mārohi ki anamata New Zealand's First Emissions Reduction Plan 2022 (ERP)
- National Policy Statement (notably Urban Development)
- Auckland Motorway Improvements
- City Rail Link (CRL)
- Northern Corridor Improvements
- Access for Everyone/City Centre Master Plan
- Government Policy Statement on Land Transport
- Auckland Transport Alignment Project (ATAP)

Communications & Engagement

- Taking Aucklanders on the journey through this project and its contribution to shaping the future of Tāmaki Makaurau
- Engagement in late 2022 to raise awareness and support, and gather feedback from community and stakeholders to inform the IBC process
- Engagement and consultation from late March this year on options to help shape the recommended way forward.
- Targeting a diverse range of views and feedback from across the region



Early Engagement

- Elected Member Engagement July and Nov 2022
- Hosted a Stakeholder Breakfast and panel event with the Minister of Transport Dec 2022
- Engagement at primary schools Nov and Dec 2022
- Community engagement at six local community markets across six weeks in Nov-Dec 2022
- Survey questions to understand how and why people currently use the crossing, and what they would like to see in the future.



Survey Results

97% of respondents cross the harbour

30% of respondents currently cross the harbour by bus

Reliability, speed and convenience are the most important factors in encouraging future public transport usage

Current bus trips are most commonly for **employment**, then **social activities**

88% said they would catch a bus or a train over the harbour if they could

66% would walk or cycle across the harbour

Respondents said they would use more public transport in the future for trips to social activities, if more options were available



Most common themes in the open comments



Key destinations were **Central City & Takapuna**



Strong support for **rail options**



Open comments on cycling and walking connections were mixed

19% mentioned support for future connections
16% said cycling is not a priority

There was also strong support for cycling infrastructure sooner, rather than later, with comments suggesting a cycle lane on the current bridge

To help with the **decision-making process** on options in the next phase, respondents want information about **cost, timelines** and **modes**

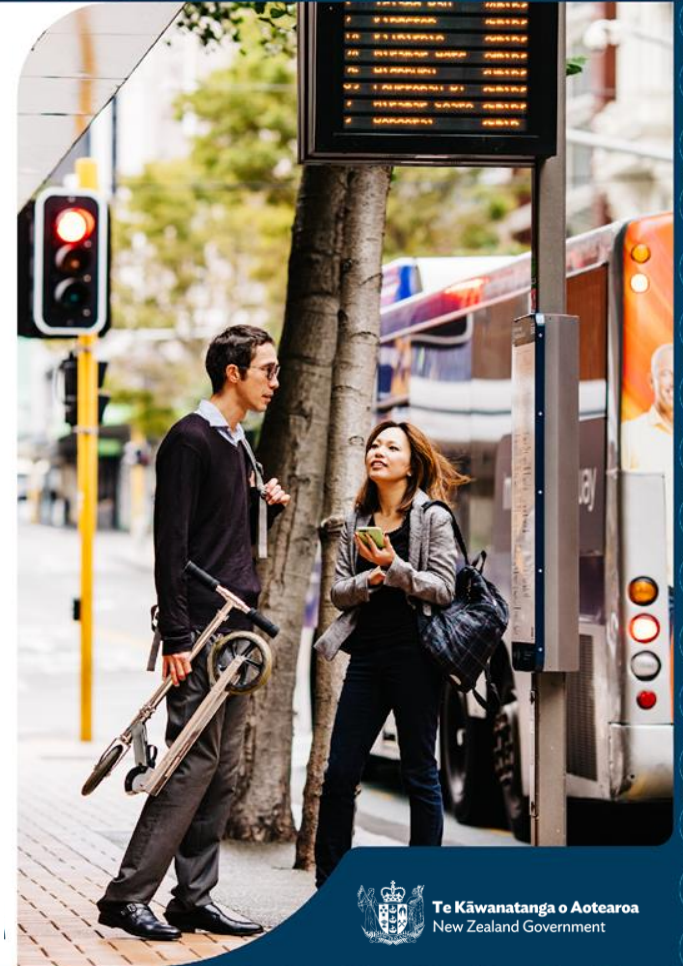
Sentiments from Nov-Dec survey

This is a once in a century opportunity to lay the foundation for our future generations.

Please invest in doing it right first time. Having options to walk and cycle safely would be incredible. Key is that it is designed right so that everyone is safe and has their own space so everyone feels comfortable using it.

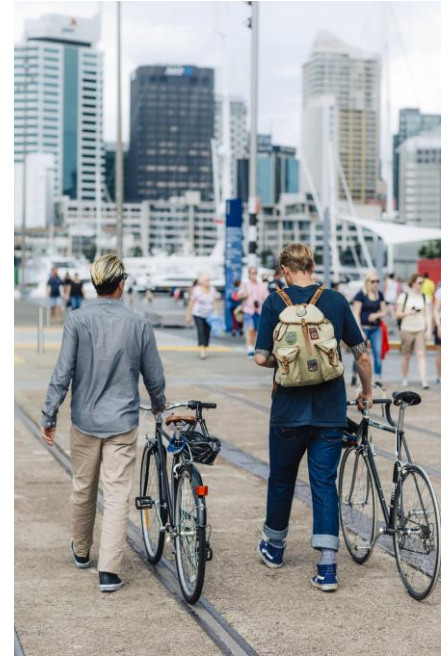
Focus on reliable public transport and discourage car use.

Auckland could be a world class liveable city if we connected the city better. We are lagging behind other cities in liveability which have nowhere near as beautiful a landscape or harbour, yet actually make it easy for people to move around.

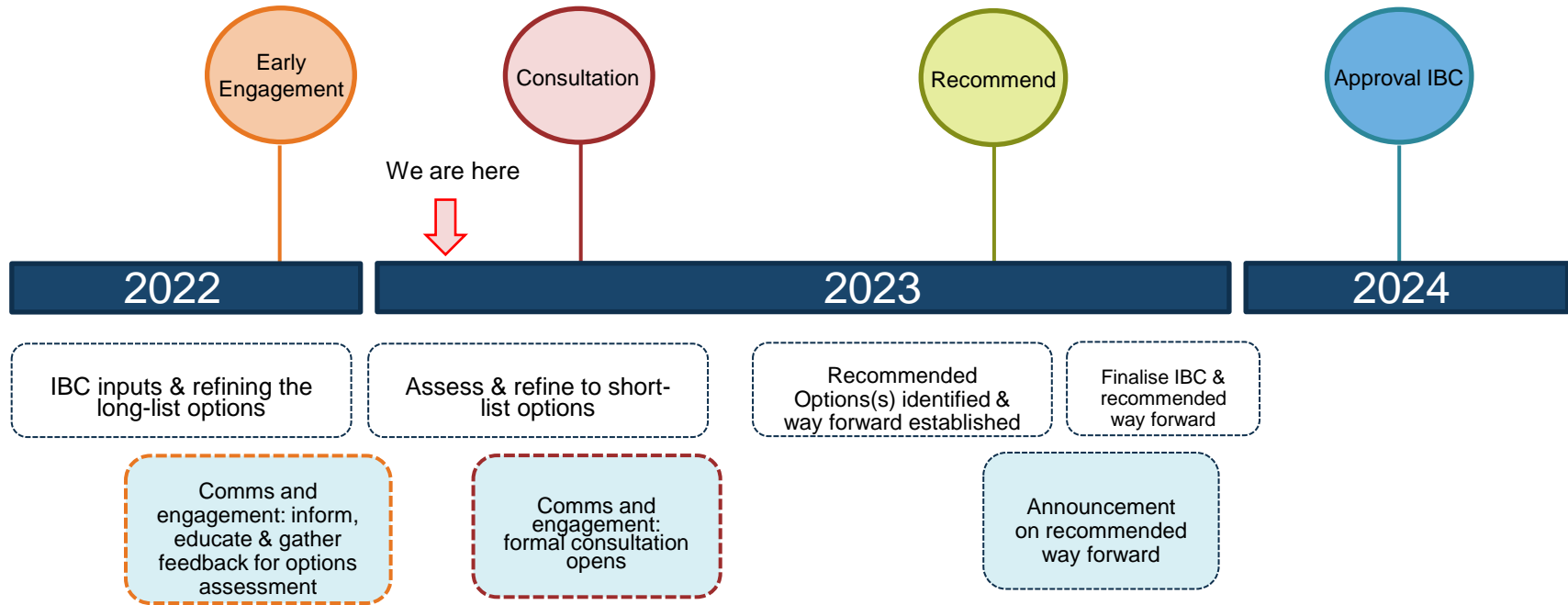


Engagement and Consultation

- The main consultation and engagement period is late March to late April 2023.
- We want to understand what the community like about a series of options.
- Stakeholder engagement will also continue, with a focus on business, utilities and freight groups.
- Looking for opportunities to connect with our diverse communities.
- You will receive an information pack and links to the website and survey in March.
- Please share project information and the survey link with your networks.
- **Pātai:** Are there any particular groups or stakeholders in your area that we should connect with?
- **Pātai:** Are there any events or proposed consultations that you would like us to join with a particular focus on reaching diverse communities?



Timeline for Indicative Business Case




Note: subsequent phases and timing are subject to government decision making and include, detailed business case (DBC), pre-implementation (consenting and design) followed by tender and construction

In summary

- The Waitematā Harbour Connections project:
 - is inter-generational
 - will be multi-modal
 - will take an overall network and planning approach
 - includes future use of the existing Auckland Harbour Bridge
 - includes strong climate change and emissions reduction focus
 - includes land use planning and quality urban development
 - has strong governance at all levels
 - requires effective engagement with partners, stakeholders and communities
 - includes Integration with Auckland Light Rail on rapid transit
- **Consultation starts late March.**





He pātai? Questions

Innovating Streets for Schools Pathway to Permanence – Birkdale Primary School

7/02/2023

Let's go there 

Contents

1. Innovating Streets for People Safe School Streets Trail
2. The Path to Permeance
3. What are the Permanent Changes?

Innovating Streets for People Safe School Streets Trail

- Trial temporary physical infrastructure changes on streets around primary school entrances to improve safety and to promote walking and cycling.
- Consultation and engagement with the school and local residents between 2017 – 2019, trial started June 2021.



The Path to Permeance

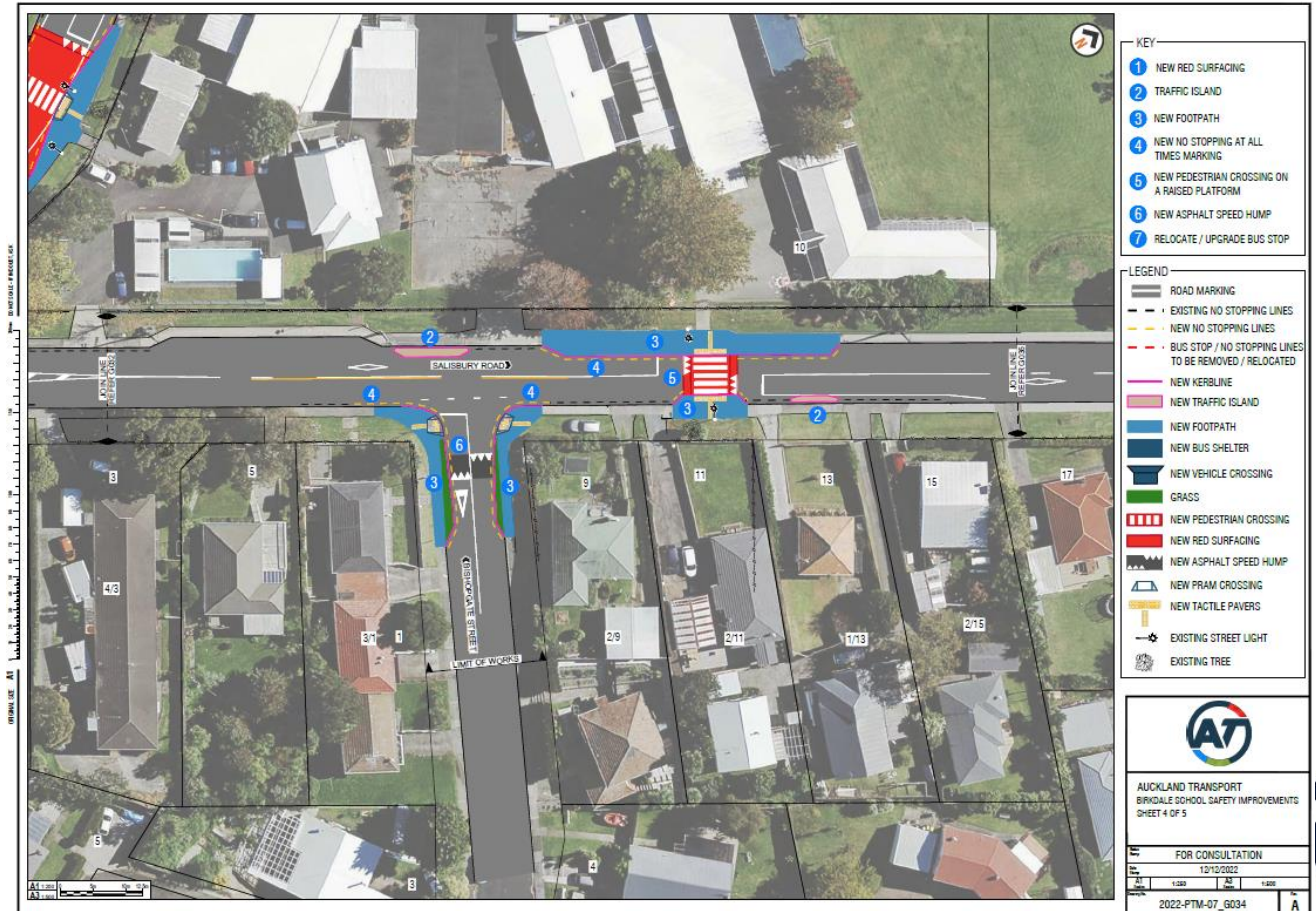
Making permanent the temporary trial measures installed during the Innovating Streets for People Safe School Streets Trail

- Successful trial – Decrease in speeds, reduction in dangerous in risky road user behaviour, increased perceived safety and an uptake in active mode usage.
- Retention decision made February 2022.
- Estimated cost of permanent solution \$1.4 million.
- Construction planned for April 2023.



What are the Permanent Changes?

Road	Location	Treatment Type
Birkdale Road	136 Birkdale Road	Red surfacing with 'SCHOOL' painted threshold
Birkdale Road	96 Birkdale Road	Red surfacing with 'SCHOOL' painted threshold
Birkdale Road	120A Birkdale Road	Upgrade existing zebra to Raised zebra. Footpath widening
Birkdale Road	114 - 116, 104 Birkdale Road	Side island
Birkdale Road	From opposite 120 to 124	Relocation of bus stop
Birkdale Rd/ Salisbury Rd	Intersection	Radius tightening of corners, realignment of pram crossings and refuge islands, widening flush
Birkdale Rd/ Stott Ave	Intersection	Radius tightening of corners
Salisbury Ave/ Bishopgate St	Intersection	Radius tightening of corners, give way control
Salisbury Road	11 Salisbury Road	Upgrade existing zebra to Raised zebra, footpath widening
Salisbury Road	20 Salisbury Road	Red surfacing with 'SCHOOL' painted threshold
Salisbury Road	10, 13 Salisbury Road	Side island
Bishopgate Street	1 Bishopgate Street	Speed hump



Community engagement

- Opportunity to showcase permanent design to the community
- Capture feedback and answer questions the community have about the permanent safety solutions
- Provide a voice and face to the project



Thank you

Let's go there 