

Kaipātiki Local Board Workshop Programme

Date of Workshop: Wednesday 9 March 2022
Time: 9.45am
Venue: Via Microsoft Teams

Time	Workshop Item	Presenter	Governance role	Proposed Outcome(s)
9.45 – 10.45am	Anzac Day discussion	<p>Karem Colmenares Senior Event Organiser (Civic), Regional Service Planning, Investment and Partnerships</p> <p>Genieve Abrahams Event Organiser (Civic), Regional Service Planning, Investment and Partnerships</p>	<ul style="list-style-type: none"> Setting direction 	<ul style="list-style-type: none"> Define board position and feedback
10.45 – 11.30am	Connected Communities - Welcoming Communities Scoping Project	<p>Claire Liousse Empowered Communities Specialist, Connected Communities</p> <p>Lisa Diggins Specialist Advisor, Connected Communities</p> <p>Cheng Goh Project Consultant, Connected Communities</p> <p>Trina Schuster Connected Communities Lead & Coach, Connected Communities</p> <p>Astrid van Holten Immigration New Zealand</p>	<ul style="list-style-type: none"> Setting direction 	<ul style="list-style-type: none"> Define board position and feedback
11.30 – 11.45am	Break			

11.45am – 1.30pm	Kaipātiki Local Parks Management Plan	<p>Darren Jeong Service & Asset Planner, Regional Service Planning, Investment and Partnerships</p> <p>Matthew Ward Service & Asset Planning Team Leader, Regional Service Planning, Investment and Partnerships</p> <p>John McKellar Parks & Places Specialist, Parks Sports and Recreation</p>	<ul style="list-style-type: none"> • Setting direction 	<ul style="list-style-type: none"> • Define board position & feedback
1.30 – 2.15pm	Lunch			
2.15 – 3.15pm	Industrial Pollution Prevention Programme – Wairau sensor pilot update	<p>Bianca Lilley Healthy Waters Specialist, Infrastructure & Environmental Services</p> <p>Leon Blackburn Targeted Initiatives Senior Specialist, Licensing & Reulatory Compliance</p> <p>Simon Wilkinson Wilkinson Environmental Ltd</p> <p>Hannah Brightley Intermediate Healthy Waters Specialist / Acting Relationship Advisor – Infrastructure & Environmental Services</p>	<ul style="list-style-type: none"> • Setting direction 	<ul style="list-style-type: none"> • Define board position & feedback
3.15 – 3.30pm	Break			

3.30 – 4.30pm	Auckland Transport: Draft Auckland Parking Strategy 2022	Claire Covacich Principal Transport Planner, Auckland Transport	<ul style="list-style-type: none"> Setting direction 	<ul style="list-style-type: none"> Define board position and feedback
4.30 – 5.00pm	FIFA Women's World Cup 2023 Presentation will be available early next week	Neil Coventry Training Venues Manager, FIFA Women's World Cup 2023	<ul style="list-style-type: none"> Setting direction 	<ul style="list-style-type: none"> Define board position and feedback

Next workshop: Wednesday 23 March

23 March 2022	9.30am	10.00am	Board members time
	10.00am	12.30pm	LBAP 5
	12.30pm	1.15pm	Lunch
	1.15pm	2.45pm	Community Facilities
	2.45pm	3.00pm	Break
	3.00pm	4.00pm	Heritage report discussion
	4.00pm	5.00pm	Auckland Unlimited

Role of Workshop:

- (a) Workshops do not have decision-making authority.
- (b) Workshops are used to canvass issues, prepare local board members for upcoming decisions and to enable discussion between elected members and staff.
- (c) Workshops are open to the public however, decisions will be made at a formal, public local board business meeting.
- (d) Members are respectfully reminded of their Code of Conduct obligations with respect to conflicts of interest and confidentiality.
- (e) Workshops for groups of local boards can be held giving local boards the chance to work together on common interests or topics.

2022 Anzac Day Service Kaipātiki Local Board

March 2022



Purpose of the meeting

- To provide the delivery options and get directions from the local board for Anzac Day services and parades 2022.



Context

- LDI budget approved: \$39,000
- Planning on Anzac services has already commenced and some financial deadlines are coming up within the fortnight
- There are restrictions on events in all levels of the traffic light system, Auckland is currently in Red
- The number of COVID-19 cases have increased significantly in the last week
- Majority of attendees are older and more at risk of severe illness from COVID-19
- Staff are unable to plan for two unique services catering to multiple levels of the traffic light system, direction is needed from the local board where to focus our attention



Event Definitions

Outdoor community gatherings

- Outdoor community gatherings must follow the gathering guidelines
- Gatherings are open to the public and do not require tickets or registration
- Includes street parades, free public concerts in a park, community fairs
- Specific to RED
 - Gatherings are **limited to 100 people** if everyone has a **My Vaccine Pass***
 - Gatherings are **limited to 25 people** if My Vaccine Passes are **not being used**
 - Children and babies are included in the gathering limits — but not people working at a gathering
 - From 4 February 2022, you must wear a face mask when attending a gathering

* Capacity limits are based on the size of the event space and may be less than 100 or 25 if space does not allow



Traffic Lights – basic rules at each shade for Events

	RED		ORANGE		GREEN	
	With Vaccination Pass checks	No Vaccination Pass checks	With Vaccination Pass checks	No Vaccination Pass checks	With Vaccination Pass checks	No Vaccination Pass checks
Attendees	Up to 100	No event can be held, only gatherings	No limits	Up to 50	No limits	Up to 100
Distancing between people	1mtr	1mtr	No legal requirements	1mtr	No legal requirements	1mtr
Defined space	100pax with 2mtrs between spaces	25pax with 2mtrs between spaces	No legal requirements	50pax with 2mtrs between spaces	No legal requirements	100pax with 2mtrs between spaces
Food & Beverage	Seated & separated 1mtr	Seated & separated 1mtr	No legal requirements	Seated & separated 1mtr	No legal requirements	Seated & separated 1mtr
Face masks	As at 4.02.2022, mandatory for all event workers, participants, and attendees.	As at 4.02.2022, mandatory for all event workers, participants, and attendees.	As at 4.02.2022, mandatory for all event workers, participants, and attendees.	As at 4.02.2022, mandatory for all event workers, participants, and attendees.	As at 4.02.2022, mandatory for all event workers, participants, and attendees.	As at 4.02.2022, mandatory for all event workers, participants, and attendees.



Anzac Day Service – Birkenhead- Red and Orange Level

Options	Format	Impact / Risks
1a) On site private service live streamed	<p>Venue: inside the Birkenhead RSA club house Capacity: 100 guests by invite only Programme: no parade. Public may lay a wreath during the day. Filming the service for a live feed on local area social channels Contactless catering options only</p>	<p>Public could be upset to see there are guests inside the hall but are denied access to the private service All invitees will need to be fully vaccinated Mask to be worn throughout the service Social distancing will occur 1m apart and seated Delivered under original budget Covid could still be transmitted through small gathering indoor</p>

The Birkenhead RSA has indicated this delivery option



Anzac Day Service – Birkenhead – Red and Orange Level

Allocated Budget \$16,000

CATEGORY	BUDGET ESTIMATE
Staffing	\$200.00
AV Equipment	\$3,000.00
Security	\$650.00
First Aid	\$450.00
Wreaths	\$120.00
Optional- Livestreaming (TBC)	\$6,000.00
TOTAL	\$10,420.00



Planning Meeting Outcome

“I have discussed this matter with our executive committee and they have decided to hold a service inside our clubrooms, and have no public service or parade.

This decision was made reluctantly, but the Omicron Outbreak and Traffic Light Red status present huge challenges with social distancing and contact tracing requirements. Of almost equal concern is the current protest movement in New Zealand and how these anti mandate protestors would likely disrupt the day and how other members of the public and/or RSA members may react. This then becomes a Health and Safety issue.

Can I please request assistance with live streaming our Anzac Service and with some security staff on the day (ideally 4) to handle any potential protest problem.” - **Phil Agent, Secretary/ Manager, Birkenhead RSA**

The Civic Parade in Birkenhead WMP;

The decision we made together (Birkenhead RSA and KCFT the provision provider)

“ that the Civic Parade be held at RSA Birkenhead be cancelled and a small intimate service is to be an indoor setting on 25th April 2022, Auckland Council Budget would provide the appropriate needs within the service area and also undertake the broadcasting video system.”

At the KLB meeting I spoke on the two community ANZAC parades, Northcote and Glenfield and we had also discussed these parades at length, and all felt and they should be cancelled. – **Jill Nerhney**



Anzac Day Service – Northcote and Glenfield - Red Level

Options	Format	Impact / Risk
Cancel	N/A	<p>Public upset that service been cancelled Funding from both services could be deferred to Birkenhead to support additional cost.</p>
Indoors	<p>Venue: Inside the Memorial hall, numbers limited to Northcote hall capacity (27). Glenfield hall capacity (60) No parade. No catering Invitees only, all need to be fully vaccinated Wreaths can be laid during the service.</p>	<p>Public could be upset to see there are guests inside the hall but are denied access to the private service All invitees will need to be fully vaccinated Mask to be worn throughout the service Social distancing will occur 1m apart and seated Delivered under original budget Covid could still be transmitted through small gathering indoor</p>

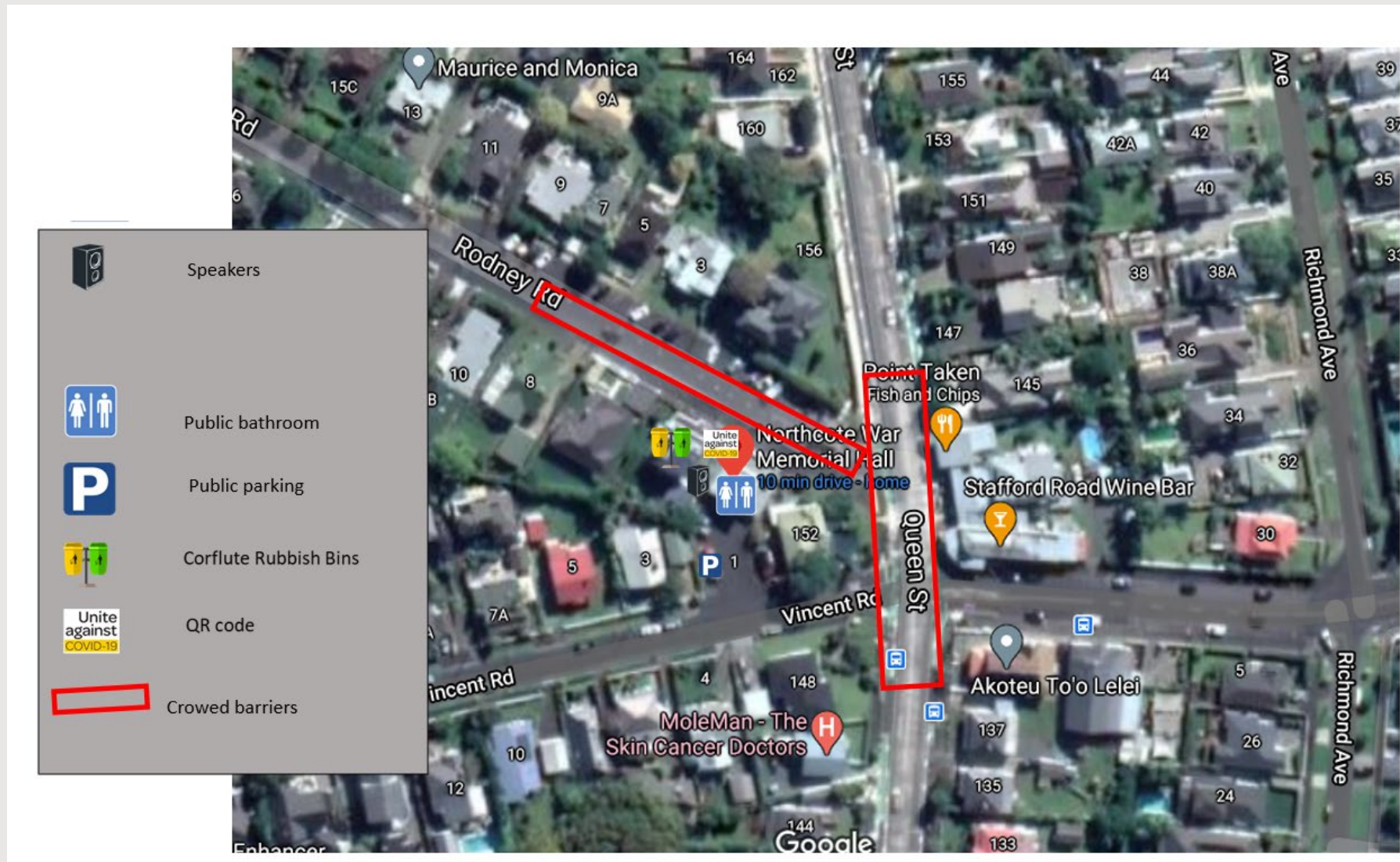


Anzac Day Service – Northcote and Glenfield - Orange Level

Options	Format	Impact / Risk
Outdoors	<p>Venue: outside within the fenced area. parade can be held but would need to be brought closer to site Wreaths can be laid during the service.</p>	<p>Public may be upset they are denied access because they don't have a covid pass. Protesters may attend and disrupt the services due to fully vaccinated allowed access only High risk of people driving cars through the services Potential increase in cost</p>
Indoors	<p>Venue: Inside the Memorial hall, numbers limited to hall capacity (90). No parade. Wreaths can be laid during the service.</p>	<p>Public could be upset to see there are guests inside the hall but are denied access to the private service All invitees will need to be fully vaccinated Mask to be worn throughout the service Social distancing will occur 1m apart and seated Delivered under original budget Covid could still be transmitted through small gathering indoor</p>



Anzac Day Service – Northcote Outdoor - Orange Level



Anzac Day Service – Northcote - Orange Level

Allocated Budget \$14,000

CATEGORY	BUDGET ESTIMATE
Staffing	\$500.00
Kaipatiki community trust	\$1500.00
Fencing	\$3,500.00
Security	\$800.00
First Aid	\$750.00
Catering	\$500.00
Wreaths	\$120.00
Waste Management	\$225.00
Traffic Management Plan	\$7,200.00
TOTAL	\$15,095



Anzac Day Service – Glenfield Outdoor - Orange Level



Anzac Day Service – Glenfield - Orange Level

Allocated Budget \$9000

CATEGORY	BUDGET ESTIMATE
Staffing	\$500.00
Fencing	\$3,500.00
Security	\$800.00
First Aid	\$750.00
Catering	\$500.00
Wreaths	\$120.00
Waste Management	\$225.00
Traffic Management Plan	\$5,256.50
TOTAL	\$11,651.50



Delivery Options – Summary- Northcote & Glenfield

Option 1:

Plan & deliver under RED

PROS	CONS
Commemoration to be held.	Limited to 27 Northcote hall and 60 Glenfield hall.
Planning to progress.	Invite only.
More controlled and safe event space.	Vulnerable attendees at high risk of being expose to COVID.
Can be delivered within existing approved LDI budget	Potential anti-mandate protests at live events restricting access to My Vaccine Pass holders.
Sufficient time to reallocate underspent funds	

Option 2:

Plan & deliver under ORANGE

PROS	CONS
Commemoration to be held if region moves to Orange.	Must cancel if no confirmation on shift to Orange is known 15 days prior to the service.
Planning to progress.	Extra budget required to cover fencing and security.
More controlled and safe event space.	Potential anti-mandate protests at live events restricting access to My Vaccine Pass holders.
No limits on attendees numbers.	Vulnerable attendees at high risk of being expose to COVID.

Option 3:

Reallocate funds to local services

PROS	CONS
Local Board supporting local services led by the community.	No local board hosted service to be held in 2022.
	Potential local services are cancelled.

Board to confirm an option for the delivery of the service



Expectations - next steps

Local Board Members

- To confirm the delivery option as soon as possible
- To appoint an event lead for Anzac Day service

Civic team

- To plan and deliver based on direction provided
- To discuss live streaming options with Comms (If requested)

Local Board Services team

- Coordinate the wreaths

Comms team

- To assist local board members with speech notes- if requested.
- To provide support with promotion in social media if requested



Q&A



Welcoming Communities: introduction and next steps

Claire Liousse, Lisa Diggins and Cheng Goh – Connected
Communities

February 2022



Today's agenda

- Introductions
- About Welcoming Communities
- Current analysis
- Questions, comments, feedback
- Next steps



Introductions

Welcoming Communities is a settlement programme funded by the Ministry of Business, Innovation and Employment for FY21-24.

This scoping project is being delivered by a partnership between Auckland Council (Connected Communities) and Immigration New Zealand.



Welcoming Communities – Te Waharoa ki ngā Hapori

Welcoming Communities is a programme that:

- supports councils/local boards, mana whenua and communities to create welcoming and inclusive environments for newcomers
- means putting out the proverbial welcome mat to recent migrants, former refugees, international students and anyone new to the community
- is built on values of Whanaungatanga and Manākitanga, and the principle that when newcomers feel connected and welcomed into a community, everyone enjoys greater social, civic, economic and cultural benefits.

Being a Welcoming Community means building a positive, welcoming reputation.



Participating Communities



Hamilton City Council
Tauranga City Council
Western Bay of Plenty District Council
Palmerston North City Council
Whanganui District Council
Rangitikei District Council
Horowhenua District Council
Masterton District Council
Ashburton District Council
Selwyn District Council
Queenstown Lakes District Council
Central Otago District Council
Gore District Council
Invercargill City Council
Southland District Council
Hastings District Council
Tasman District Council



Welcoming Communities Standard

1. Inclusive Leadership
2. Welcoming Communications
3. Equitable Access
4. Connected and Inclusive Communities
5. Economic Development, Business and Employment
6. Civic Engagement and Participation
7. Welcoming Public Spaces
8. Culture and Identity



Welcoming Communities benefits (source: INZ)

Councils and communities are seeing:

- stronger relationships between local residents, newcomers, local community groups and the council
- locals and newcomers celebrating each others cultures
- newcomers more confident to engage with the council
- improved access to services and resources for all newcomers
- local businesses owners valuing diversity in their workforce
- new local partnerships and collaborations to deliver Welcoming Plan activities



Immigration New Zealand support

- Knowledge Sharing
- Standards, Welcoming Plan and Accreditation
- Celebrating success
- Funding towards a coordinator (\$50,000 per year) and benefits attached to each stage of accreditation (example, one-off contribution of \$9,500 towards activities at Stage 2 – Established)



Local Board application should:

- be clear about the benefits they see for newcomers and local residents, and why they want to join Welcoming Communities
- be able to show that the local board, in partnership with its community, is committed to participating in the programme
- describe how they will partner with mana whenua to implement Welcoming Communities
- have a successful track record of collaborating with local and national partners to implement other initiatives and programmes.



Local Board	Suburb
Kaipātiki (5.4% Akld population)	Beach Haven, Birkenhead, Chatswood, Birkdale, Northcote Peninsula, Glenfield, Hillcrest, Marlborough, Totara Vale, Bayview



88,269 residents (Census 2018)



28,986 dwellings (2018)
 - 62.3% own – partially own, in trust
 - 37.8% not owned
 ++ 1,500 new homes (Northcote Development) in the next five years

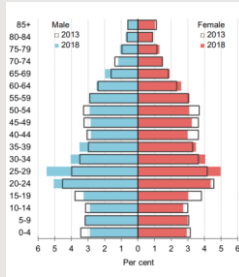
❖ Age profile :



Median 34.8 yrs vs Akld region (median : 34.7 yrs)



18.7% Less than 15 yrs

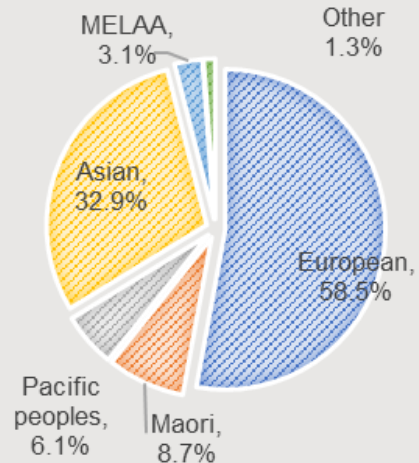


32.2% under 25 yrs



11.6% Over 65yrs

❖ 3 in 5 European descent, a third Asian descent



- Languages
 - Chinese, Tagalog, Māori, Hindi, French, Afrikaans, Samoan and Spanish
 - 25.2% two languages (vs 25% Akld)
 - 3.9% three languages (vs 4% Akld)
- Religious affiliation : No religion (48.6%)
Christian (36.5%)



❖ Migration:

- 45.8% overseas born (vs 41.6% Akld)
 - of which 25.7% from Asia, 6.4% from UK , 4.8% from Middle East and Africa, 3% from Europe

- 21.2% residents arrived within past 9 yrs (vs 16.2% Akld)

❖ Employment:

- 54.4% are in Full-time employment (vs 51.9% Akld)
 - 14.2% Part-time (vs 13.7% Akld)
 - 3.5 % Unemployed (vs 4.1% Akld)
 - 27.9% Not in Labour force (vs 30.4% Akld)

❖ Income:

- Medium income : \$37,000 (vs \$34,400 Akld)



Kaipātiki Local Board Priorities



- Outcome 1** : Belonging and wellbeing
- Outcome 2** : Environment
- Outcome 3** : Places and spaces
- Outcome 4** : Transport and connections
- Outcome 5** : Opportunity and prosperity



Observations

- Provide safe, accessible social infrastructure to nurture thriving, connected and inclusive communities
- Recognition and celebration of diversity; projects, events and activations meet community needs across all sectors
- Strategic partnerships and collaboration. Utilise local resources to solve local problems, increase social capital available in community.
- Education, training, volunteering opportunities and engagement to promote sustainability and climate conscious practices



Questions, feedback and next steps

- Do you see potential value in the local board joining Welcoming Communities?
- Are you comfortable with the team moving to the next stage of engagement?
- Who are the key organisations to engage with at this stage, to seek feedback on opportunities from the programme and interest in participating in the future?



Reviewing the draft Kaipātiki LPMP

Kaipātiki Local Board workshop

9 March 2022



Today's focus

1. Recap of works undertaken & Summary of legal review of Volume 1
2. Overview of Volume 2 feedback from the PWG & draft approach for multiple park pages / amalgamation of maps
3. Overview of Volume 2 feedback from staff
4. Reclassification (Kauri Point Domain)

*Allow approximately
20-25 minutes for
each item*

Introduction – Kaipatiki LPMP (Local Parks Management Plan) and PWG involvement

- Intention to prepare the Local Parks Management Plan was publicly notified from June 2019 to August 2019.
- Resolution KT2018/114 – PWG (Political Working Group) established to collaborate with the council officers to:
 - i. Develop the scope of work required for the LPMP, receive regular project updates
 - ii. To provide informal feedback to staff on the direction taken for the Open Space (now Local Parks) Management Plan.

NB: All decisions regarding the LPMP will be taken by the Local Board at business meetings.



What we've done since we last met on 8 December 2021

DECEMBER

- Two staff workshops to discuss Volume 2 held on 2 and 13 December
- Mana whenua workshop to discuss Volume 2 held on 3 December
- Workshop with the PWG on 16 December
- Publicly notified 1 proposed reclassification on 23 December
- Draft Kaipatiki LPMP sent to Political Working Group members, mana whenua and staff on 17 December for feedback over January and February

JANUARY

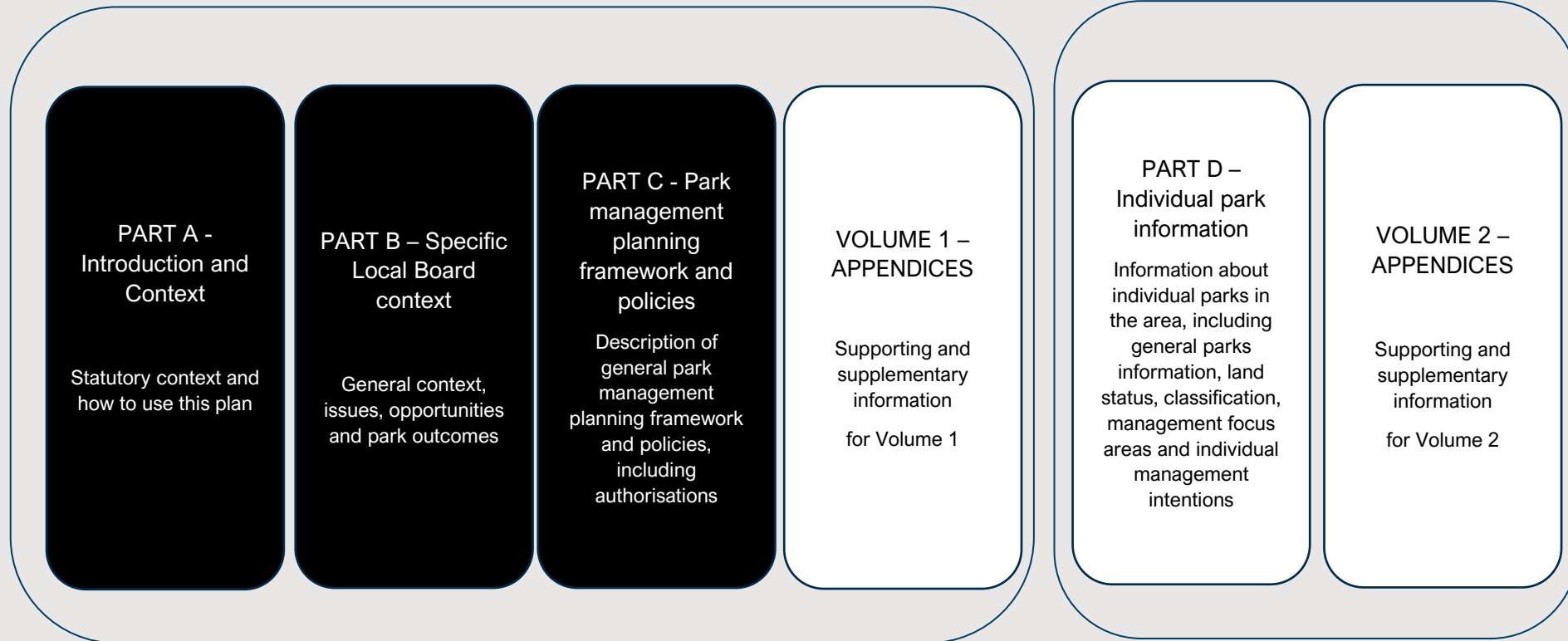
- Collated local board and staff feedback on draft plan (none received from mana whenua)
- Replied to public member enquiries about proposed reclassification
- Received 1 objection about proposed reclassification of Kauri Point Domain

FEBRUARY

- We reviewed Political Working Group members and staff feedback and made updates to draft plan (between 14 and 18 February)



Overall structure of LPMP - Recap



Recap of work undertaken & summary of legal review of Volume 1

Recap and summary of work undertaken for Volume 1

- Engaged with mana whenua between October 2019 and July 2021 to cover Park Values, principles for park management, Te Ao Māori in park management, General Policies
- Also engaged with Political Working Group and the local board, and had multiple workshops between 2019 and November 2020 to gain feedback on the volume 1 content
- Made changes to the Volume 1 content, which include:
 1. New principle - Focus on environmentally sustainable practices in managing and improving parks
 2. New policies – emphasis on pedestrian access (e.g. kauri dieback closures), policy supporting community group owning buildings covered by lease, environmental considerations few buildings (e.g. rainwater, energy and carbon footprint reduction, natural hazard management, better alignment with bylaws, recognition of heritage values and archaeological materials)



Legal review of Volume 1

Legal review was undertaken on 17th December 2021. The key actions taken are as follows:

Section	Summary of advice	Key actions undertaken / to be undertaken
Part A – Introduction & context	<ul style="list-style-type: none"> RA obligations and restrictions are fully captured Weight given to RA and LGA in wider regulatory context Impact of other regulations are interpreted accurately 	<ul style="list-style-type: none"> RMA removed from statutory diagram and amended wording Clarified that park users may need both regulatory approval under bylaw and landowner approval for lease/licences To update quick reference guide to policies/bylaws To clarify interpretation of the Marine and Coastal Area (Takutai Moana) Act 2011 (MACAA) and the status of park land in the common marine and coastal area (CMCA)
Part B – Parks in the local board area	<ul style="list-style-type: none"> Preface that outcomes for parks are something to strive towards Reflet obligations to involve Māori under RA and LGA specifically Clarify that relationships are with tribal authorities (mandated organisations) representing mana whenua interests in Auckland 	<ul style="list-style-type: none"> Reset expectations about delivering aspirations in open space planning documents Amended to reflect council's obligations to Māori under the RA and LGA specifically Removed reference to mana whenua status and replaced it with standard text that council recognises 19 tribal authorities as representing mana whenua interests in Auckland. Removed list of specific hapū and iwi who have an association with the local board area.
Part C – Park management planning framework	<p>Management focus areas</p> <ul style="list-style-type: none"> MFAs developed for LGA land, adapted for recreation reserves Encroachments as common issues in MFAs should be out of scope 	<ul style="list-style-type: none"> Emphasis that management focus areas (MFAs) are for LGA parks foremost Added a sentence about using MFAs for recreation reserves to provide for secondary values / purposes No change – Parks Management Plan Integration Group has agreed that encroachments should be addressed. Encroachments are listed as common issues for the MFAs informal recreation, and recreation and ecological linkage



Legal review of Volume 1

Section	Summary of advice	Key actions undertaken / to be undertaken
<p>PART D – General policies</p>	<p>Overall</p> <ul style="list-style-type: none"> • Simplify in text definitions e.g. microbility, buildings • Ensure alignment with RA classification is a requirement not a consideration • Reflect obligations to mana whenua under RA and LGA specifically <p>Park management policies</p> <ul style="list-style-type: none"> • Ensure maintenance and shared use of buildings aligns with community leases • Represent the full regulatory framework for drones and UAVs in parks • Exclude encroachments due to risk • Confirm council practice for working with mana whenua on proposals for parks <p>Authorisations</p> <ul style="list-style-type: none"> • Clarify that decision-making is for non-regulatory activities • Determine whether considerations in the authorisation assessment are feasible • Refine the scope for plaques and memorials and the scattering of ashes • Reconsider the approach for public and private utilities 	<ul style="list-style-type: none"> • Simplified definition of microbility • Amended text to ensure alignment of park activities with RA classification • Removed footnote about MACAA • Simplified definition of building • Amended text to explain maintenance responsibility of lessees • Clarified full regulatory framework applying to drones and UAVs • No change - Parks Management Plan Integration Group has agreed that encroachments should be addressed • Amended text to reflect obligations to mana whenua under the RA • Clarified that local boards responsible for regulatory decisions where they have been delegated • No change - most of the assessment criteria same as what is in the draft Hibiscus and Bays LPMP and draft Waiheke LPMP • Refined scope for plaques and memorials to say not permitted except where specifically provided for • Amended policy and appendices to provide examples of public and private utilities.



Overview of PWG feedback received on draft plan, park amalgamation and renaming

Overview of Political Working Group feedback received

- Feedback received from 1 Political Working Group member over February - **thank you!**
- Please refer to updated Volume 2 for amendments in response to the following feedback:
 - Amalgamation of multiple parks to single park (eg. Kaipatiki Esplanade Reserve, Eskdale Park)
 - Amendments to parks names (e.g. removal of street suffix, adding “reserve” at the end)
 - Have individual pages for all the reserves
 - Adjust the scale of aerial image to show advocacy road parcels in detail / latest development.



Approach to parks amalgamation & renaming (Slide 1)

- In December 2021, resolution (KT/2021/242) was made to request amalgamation of multiple reserves into a single reserve
 - Birkenhead Domain, Eskdale Scenic Reserve, Parcel Crown Land SO2473 of Francis Kendall Reserve, Hiwihau Reserve, Kelmar Reserve, Lauderdale Reserve and Tree View Reserve into “**Eskdale Park**”
 - Kaipatiki Esplanade Reserve, Witherford Scenic Reserve and parcels LOT 7 DP 43766, LOT 2 DP 49724, and LOT 2 DP 316330) part of Manuka Reserve to “**Kaipatiki Esplanade Reserve**”



(Recap) –Reasons for recommending to avoid park amalgamation/renaming as part of LPMP

- As previously advised, renaming parks name and amalgamating individual parks as part of Local Parks Management Plan was not recommended due to the following reasons:
 1. Unclear which reserves have been officially named by way of gazetting under the Reserves Act and whether the intention of the local board is to replace these
 2. Limited background information on specific reasons for some reserves' current names and whether they are significant to the community or individuals connected with the creation / naming of the reserve.
 3. In-depth research on park's current name will take time – proposing to rename / amalgamate reserves without detailed research may undermine community confidence in the process
 4. Limited time to consult mana whenua about the renaming proposals prior to undertaking community consultation through the draft LPMP – may question why not part of Te Kete Rukuruku programme.



Approach to parks amalgamation & renaming (Slide 2)

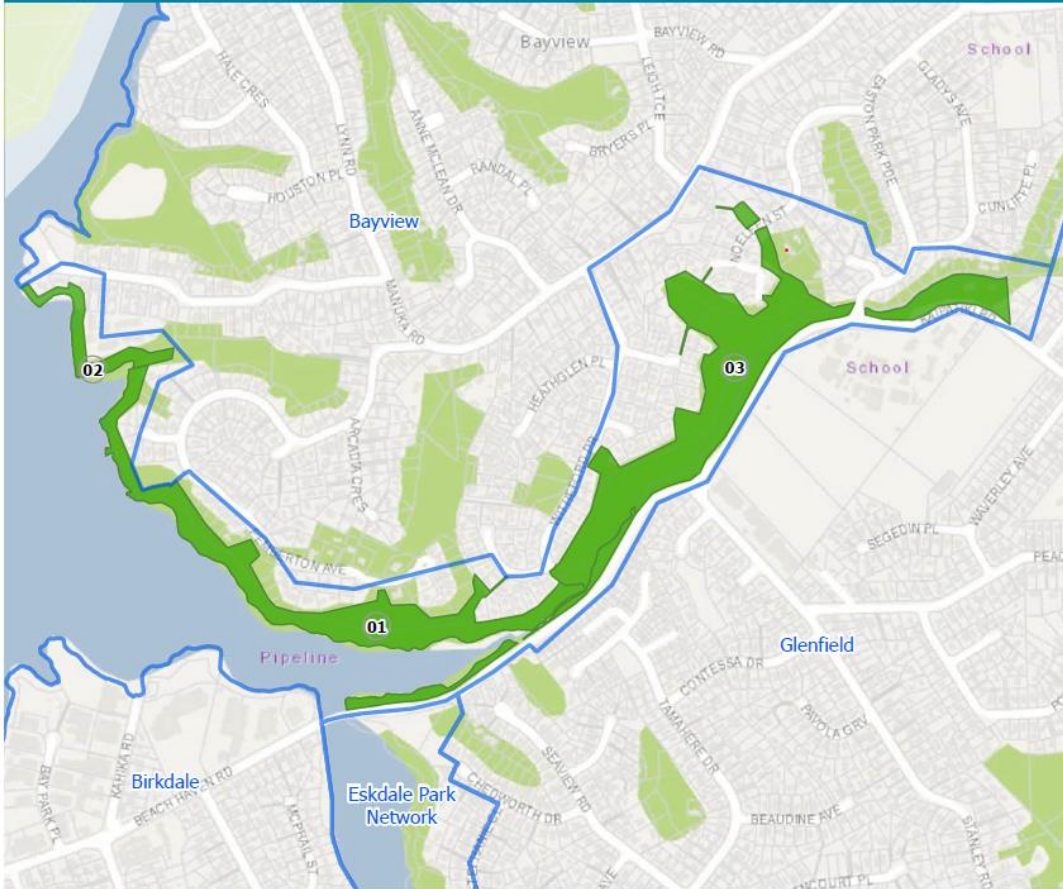
- Two options considered
 1. Create a single amalgamated park chapter each for Eskdale Park & Kaipātiki Esplanade Reserve
 2. Cluster the proposed amalgamated parks, under dedicated suburbs
- Recommended approach : Option no. 2 - As part of updated Plan, we propose creating two suburb areas:
 1. Eskdale Park network
 2. Kaipatiki Coastal Walkway Reserves

We propose to consult with the public about the intention to amalgamate and rename the reserves through the draft LPMP.
- Reasons for recommending Option 2
 1. Avoids confusion for the community when consulting on the draft LPMP
 2. Avoids the need for in-depth research prior to notification of the draft LPMP, which could delay the process
 3. Retains the existing individual parks names while enabling consultation on proposed amalgamation / renaming to occur through the draft LPMP.
 4. Opportunity to consider feedback and research on park names following notification of LPMP – any changes can be reflected in final LPMP



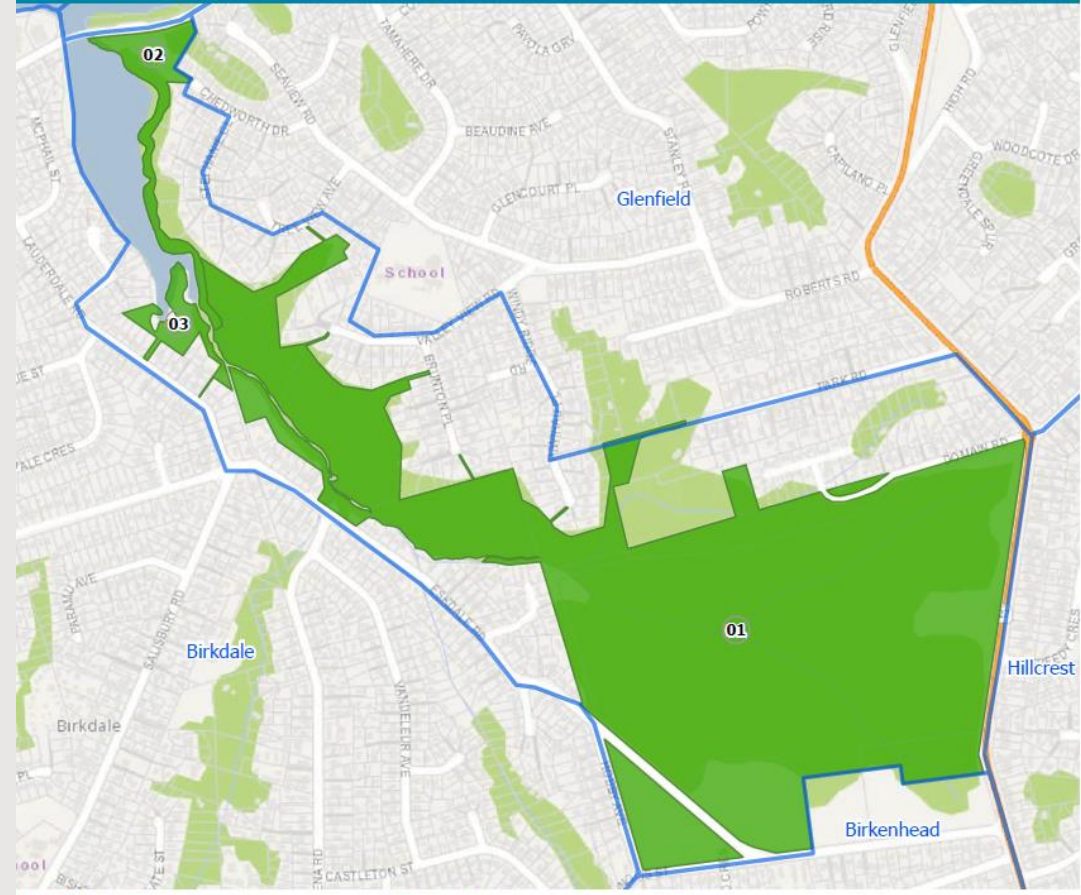
Approach to parks amalgamation & renaming (Slide 3)

Kaipātiki Coastal Walkway Reserves



Map ID	Park name	Where to find information
01	Kaipātiki Esplanade Reserve	See individual map
02	Manuka Reserve South	See individual map
03	Witheford Scenic Reserve	See individual map

Eskdale Park Network



Map ID	Park name	Where to find information
01	Eskdale Reserve	See individual map
02	Francis Kendall Reserve	See individual map
03	Lauderdale Reserve	See individual map



Questions for the Local Board

1. Do you have any concerns relating to clustering proposed amalgamated parks under two dedicated suburbs (option 2)?
2. Do you support taking the approach of including management intentions in the draft LPMP as the mechanism to consult about the proposed amalgamation and renaming of reserves?
3. Purpose of amalgamation and renaming – Does the local board seek to remove individual reserve names (whether gazetted or not) as outlined in KT/2021/242?
4. Is this approach in order to amalgamate multiple reserves and create one singular official gazetted name (which would be reflected in the final LPMP)?



Overview of staff feedback received on draft plan



Overview of staff feedback

- Feedback received from various staff – E.g. Heritage, Kauri dieback, Community Facilities, Coastal Specialist,
- Most staff feedback has been addressed in Volume Two via updates to other information, management issue and intentions.
- Feedback covered
 - Identify parks where track and accessway upgrades and improvements can be considered
 - Identify parks where voluntarily community groups are actively undertaking pest removal works
 - Raise profile of kauri dieback/myrtle rust risks and ensure greenways planning adopts appropriate measures
 - Factor in flooding and coastal inundation risks
 - Updates to the lease details





Examples for relevant management issues & intentions, and leases & licenses details

Examples – Track upgrades

Park name	Current classification	Management Issue (Draft)	Management Intention (Draft)
<p>Soldiers Bay Reserve, 20933-L100</p> 	<p>Local purpose (Esplanade) Reserve</p>	<p>Bridge crossing into Kauri Point Domain disappears under high tide.</p>	<p>Support track renewal and bridge upgrade to improve accessibility and safety of users.</p>
<p>Kauri Centennial Park, 22059-L100</p> 	<p>Scenic 19(1)(b) Reserve</p>	<p>Many tracks are in poor condition</p>	<p>Actively support and encourage track renewals.</p>





Examples – Pest Removal & Kauri Dieback

Park name	Current classification	Management Issue (Draft)	Management Intention (Draft)
<p>Brassey Reserve, 22129-L100</p> 	Recreation	Overgrown weeds present such as 5m high Arundo donax. Neighbours and Pest Free Kaipatiki have undertaken some weed removal and replanting.	Encourage and support opportunities for on-going community efforts for weed removal and native revegetation works.
<p>Kauri Glen Reserve, 22042-L100</p> 	Scenic 19(1)(a) Reserve	High risk of pathogen incursion such as kauri dieback, infecting kauri and other native vegetation	Support opportunities to protect the park from pathogen incursion such as kauri dieback, including track closure, track upgrades, discouraging any paths near kauri, fencing and hygiene measures.



Examples – Lease updates

Park name	Current classification	Lease and Licenses (Draft)
<p>Ross Reserve, 11137-L100</p> 	<p>Recreation</p>	<p>Current and contemplated leases and licences within existing footprints for:</p> <ul style="list-style-type: none"> • Provision of environmental education and restoration activities and facilities (Pest Free Kaipatiki)
<p>Hilders Park, 12942-L100</p> 	<p>Recreation</p>	<p>Current and contemplated leases and licences within existing footprints for:</p> <ul style="list-style-type: none"> • Organised Recreation activities and facilities, including activities for youth (Scout camping)



Reclassification of Kauri Point Domain

Proposed reclassification (Kauri Point Domain)



Large parcel outlined in blue: Allot 371
PSH OF Takapuna:
Classified as Recreation

- The park is currently classified as Recreation
- Proposed to be reclassified as Scenic 19(1)(b) – proposed reclassification notified 23 December 2021
- Submission closed 10 February 2022.
- One objection received – due to concerns related to prevention of opportunities for tracks for safe mountain biking.



Proposed reclassification (Kauri Point Domain) - Continue

- Factors to consider in deciding whether to proceed with the proposed re-classification:
 1. The reserve is predominantly regenerating native bush & part of a larger coastal forest network
 2. The primary values are scenic and natural amenities – Majority of management intentions focused on the protection of ecosystem and native plants.
 3. Reclassification will better cater for primary purpose and support restoration of the reserve, including pest control.
 4. Reclassification will not prevent the opportunity to establish mountain bike trails (either dedicated or dual purpose) – relevant management intentions to enable this are:
 - *Restrict bicycle and scooter use on the main pedestrian access to the beach.*
 - *Investigate options for mountain bike trails or vehicle access and parking in the park in a manner that does not compromise pedestrian safety and access*
 5. When implementing these management intentions, the local board would need to consider the impact of any trail(s) on the scenic and natural values of the reserve.



Proposed reclassification (Kauri Point Domain) - Continue

- PWG in a general agreement with proposed reclassification – requested that management intention be clarified to state what type of mountain biking is envisaged and to strengthen future development of official mountain bike trails.
- Management intention will be consulted on as part of the draft LPMP.
- Seeking full local board feedback to inform decision on reclassification – Option 1: To approve the proposed reclassification or Option 2: Revert to recreation reserve classification?
- Please advise if amendments to the management intentions are required, in relation to mountain biking track infrastructure.



Potential next steps

Further updates to draft plan following staff, local board, mana whenua and legal feedback

Complete icon methodology utilizing GIS datasets

Commence legal review of full plan (booked to start from 21 March 2022)

Further Local Board Workshop, if needed

In April or May 2022, political report to Kaipatiki Local Board recommending public notification of draft Kaipatiki LPMP

Reserves Act process and project timeline



Industrial Pollution Prevention Programme – Wairau sensor pilot

Bianca Lilley – Healthy Waters

Leon Blackburn – Proactive Compliance

Simon Wilkinson – Wilkinson Environmental Ltd



Background


Outcome 2: Environment

Our natural environment is protected and restored for future generations

		2018/2019	2019/2020	2020/2021	2021/2022	2022/2023	2023/2024
1181	Industrial pollution prevention programme	\$30,000	\$30,000	\$32,000	\$40,000	\$40,000	\$40,000

Background

- The Industrial Pollution Programme (IPPP) has run in the Wairau Creek catchment from 2018 through 2022.
- 450 businesses engaged and made aware of the impacts their practices could be having on water quality.
- The programme has resulted in the identification of 172 potential and actual, small to significant pollution issues.



WAIRAU

BUSINESS POLLUTION PREVENTION

All rainwater from the Wairau Valley area drains into underground stormwater drains and into the Wairau Creek. This creek flows through the Milford Estuary to its mouth at Milford Beach. The estuary is used by Milford Marina boats, and the beach is popular for walking, swimming and picnicking. The Hauraki Gulf off Milford Beach is home to a lot of marine life, including seabirds, fish and marine mammals like dolphins and whales.

One of the biggest potential sources of pollution entering the creek and Hauraki Gulf is from pollution incidents like spills on yards that get washed into stormwater drains, into streams and eventually into the harbour.

To help improve water quality in the Wairau Creek and the Hauraki Gulf, the Kaipātiki Local Board is working with community groups and businesses to reduce water pollution.

What you can do to help

As a local business in the Wairau area you have an opportunity to help protect and improve the quality of the Wairau Creek. To date, more than 3,500 Auckland businesses have participated in similar pollution prevention programmes. Hundreds of businesses have adopted ways to stop pollution as a result of these visits.


Please ensure areas of your site that flow to stormwater drains are kept free of contaminants, and that you have a plan in the event of a spill on your site.

Your efforts, together with the rest of our local community, will help to improve Wairau Creek and protect the sensitive marine environment and our fishing resources.

Photo: russellstreet

CALL THE POLLUTION HOTLINE ON 09 972 8107 TO REPORT POLLUTION INCIDENTS 24 HOURS A DAY 7 DAYS A WEEK

This programme is funded by the Kaipātiki Local Board as part of their commitment to improving the water quality in the Wairau Creek. The programme is being delivered by Wilkinson Environmental Ltd.



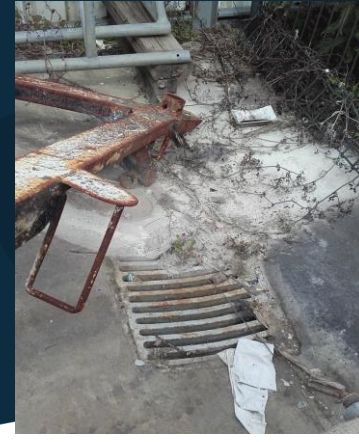
2021/2022 proposed Wairau sensor pilot:

- Originally proposed a continuation of business engagement and trial of investigative sampling.
- Following consultation with RIMU, a real-time sensor pilot approach is proposed to understand the frequency and location of pollution events within the Wairau catchment.
- Site visits for 2021/2022 programme will still start in March 2022 in Wairau (60 businesses) and Birkenhead (55 businesses).
- Sensors to be piloted in small sub-catchments to understand frequency of pollution events and general water quality.
- If successful, continue with sensor use into 2022/2023 financial year.

Industrial Pollution Prevention Programme Wairau

Typical issues observed throughout previous programmes

- No spill plans
- Poor storage
- Washing – Vehicles or Equipment
- Granite cutting
- Plastic raw materials/plastic waste

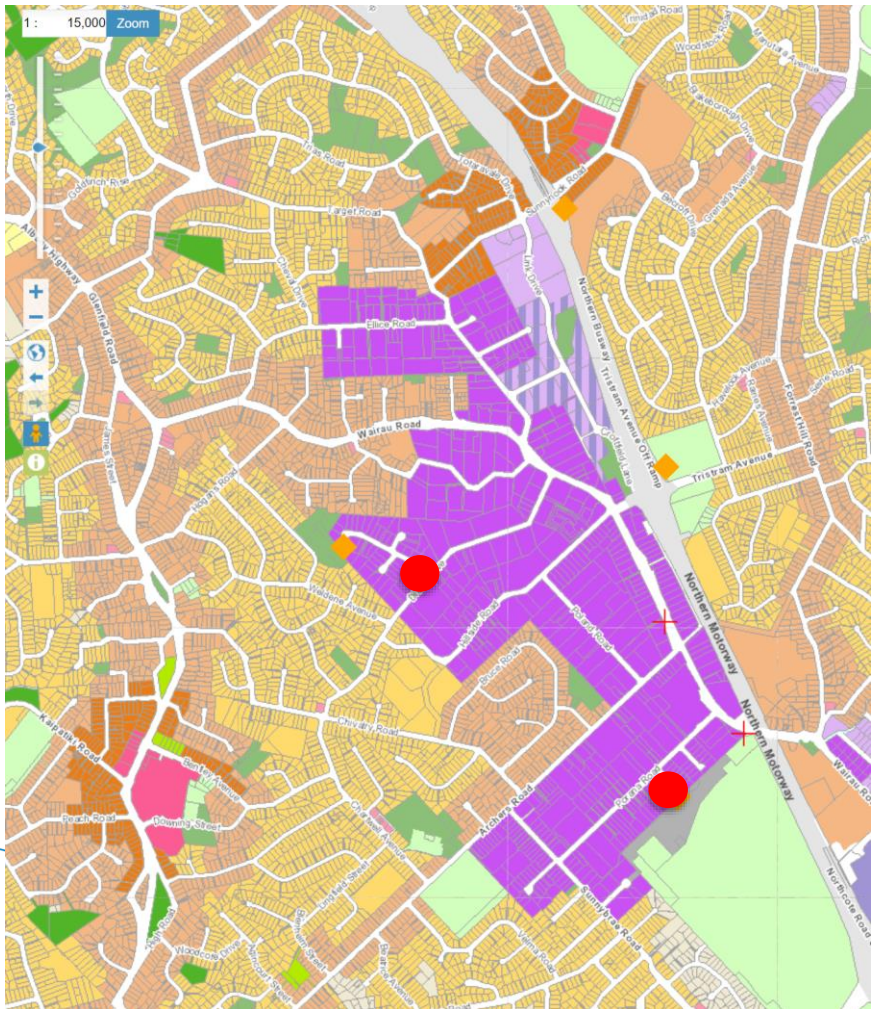


Reactive and Proactive Compliance in Wairau

- Industrial & Trade Activity Proactive Programme (ITAPP) in pilot stage, evaluating initial suitable catchment using range of information i.e. historic IPPP information, water quality data, land use zoning.
- Sensor pilot has potential to aid the prioritisation areas within catchments and enable IPPP and ITAPP to compliment each other based on catchment data (site risk, actual water quality issues).
- Reactive:
 - poor water quality, pollution incidents called into Regulatory Service pollution hotline, reporting from IPPP.
- Proactive:
 - 'okay' water quality but known catchment issues (high levels of non compliance, high risk business and industry type (zoning) .
 - Both of these approaches require correct application resourcing.
- Both approaches require quality data, cohesive and efficient application of resources

Benefits

- Real-time data collection across the catchment, with potential for samples to be automatically and/ or manually collected upon detection of pollution event.*
- Building on the work done through IPPP and ITA to address issues identified by council and local board, and consolidate response.
- Determine where we need to focus regulatory efforts and business engagement.
- Results from sampling may indicate contaminants associated with activities i.e., light industry, waste discharges, and whether ongoing, seasonal, diffuse, or sudden.
- Can be used to support and/ or measure effectiveness of interventions within the catchment i.e., past/present initiatives and devices.



Proposed locations:

- Corner of Ashfield Road & Diana Drive
- Entrance to Eventfinda Stadium

Locations based on:

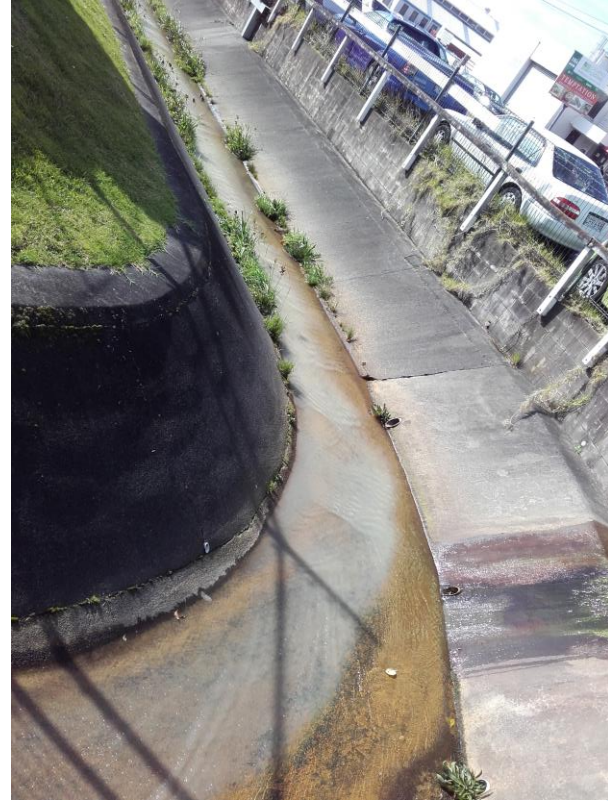
- Placement within the stream network and ability to represent sub-catchments.
- Unitary plan zoning (light industry zone)

◆ Known issues

● Proposed sensor locations



Ashfield Road





Next steps

- 'Wairau Creek sensor programme' LDI proposal will be brought to Kaipātiki Local Board for the 2022/2023 financial year instead of the original IPPP programme
- Site visits for the 2021/2022 programme will start in March 2022 in Wairau (60 businesses in addition to Devonport-Takapuna Local Board funded visits) and Birkenhead (55 businesses).
- Staff will present to Kaipātiki Local Board at a workshop in quarter one of 2022/2023 on the outcomes of the:
 - Birkenhead and Wairau site visits
 - Pilot sensor programme

Draft Auckland Parking Strategy 2022

Claire Covacich

Principal Transport Planner

March 2022

Let's go there 

We are reviewing our approach to parking management

Reflect Council strategy and government policy

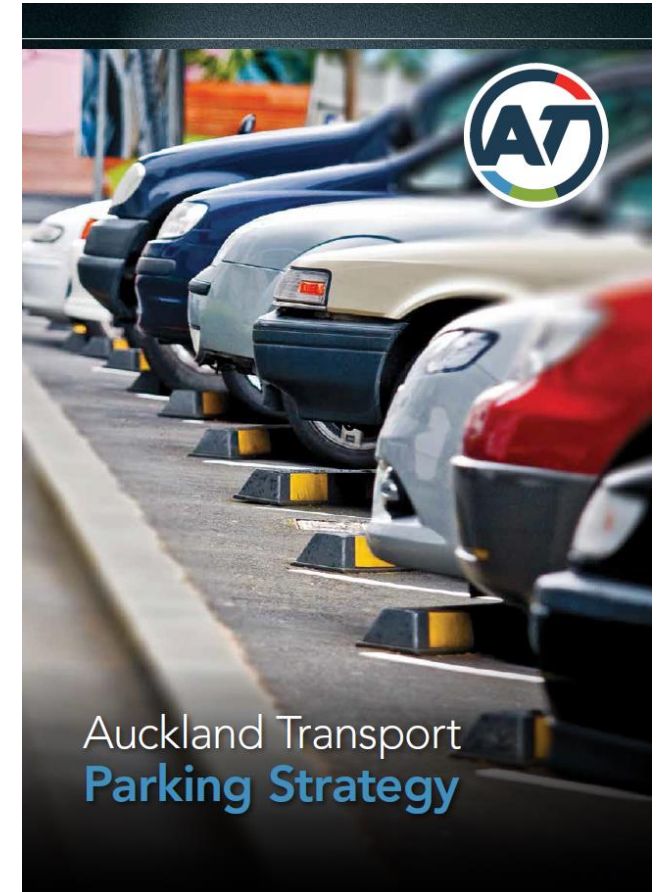
- National Policy Statement on Urban Development
- Te Tāruke-ā-Tāwhiri: Auckland's Climate Plan, & the developing Transport Emissions Reduction Plan

Provide a new community mandate

We need to have a conversation with the community about parking again, to reset expectations and set out the need for change

Enable delivery of our programme

Parking Strategy to enable their delivery



We've heard strong and mixed views on parking

There is no 'one size fits all' approach to parking management

Other key themes from local boards were:

- concern about significant or fast change
- strong concern about impacts that reduction in parking and increasing cost would have on the most disadvantaged
- desire to see implementation limited to areas with 'sufficient' public transport
- removing parking doesn't mean people will (or can) mode shift
- strong support for Comprehensive Parking Management Plans - wanting to have a say in any proposed changes
- support for better parking enforcement
- some calls for more parking availability



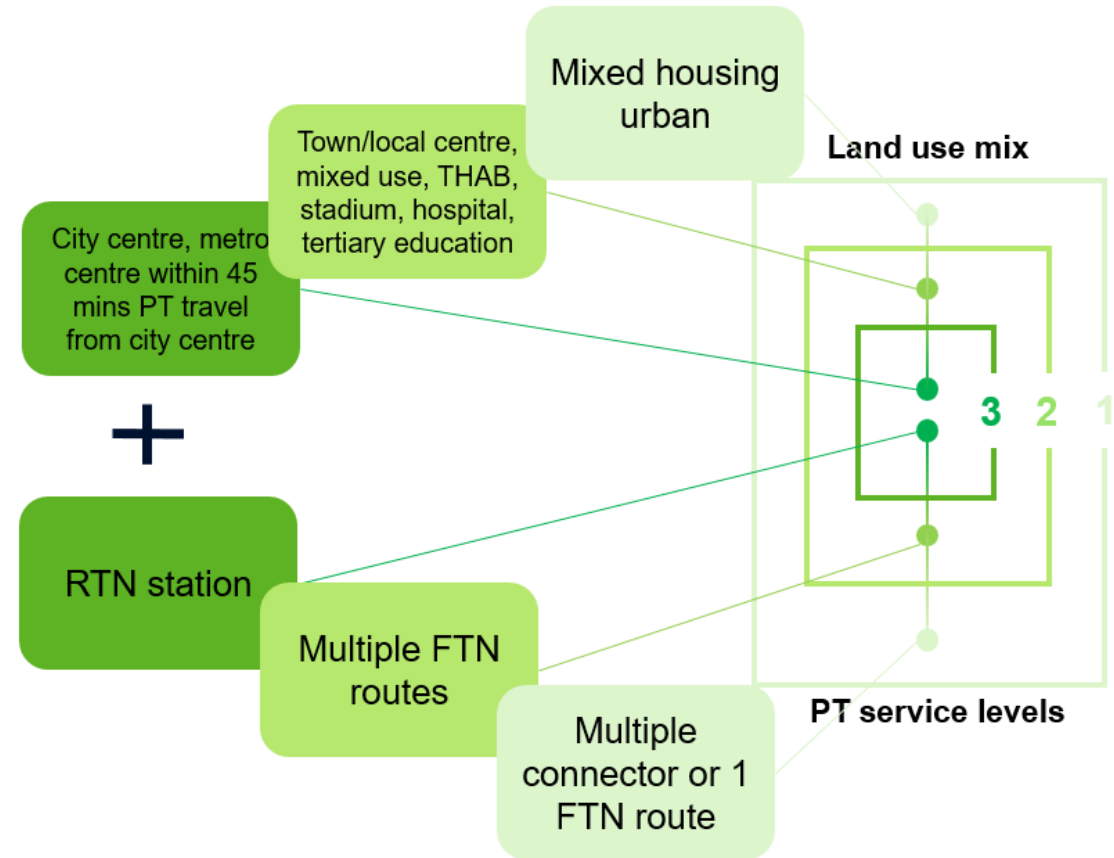
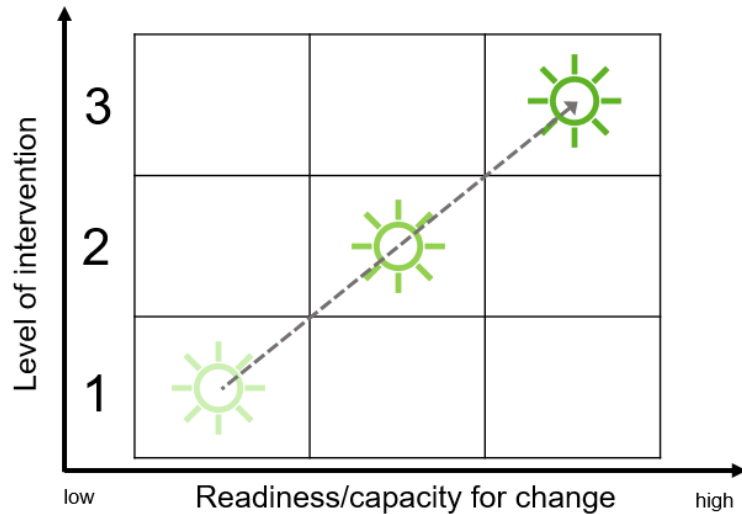
Setting the strategic direction: Principles for parking management

- the role of roads and streets – our valuable public space
- the role of parking within the context of roads and streets
- how we will engage with the community on changes to parking

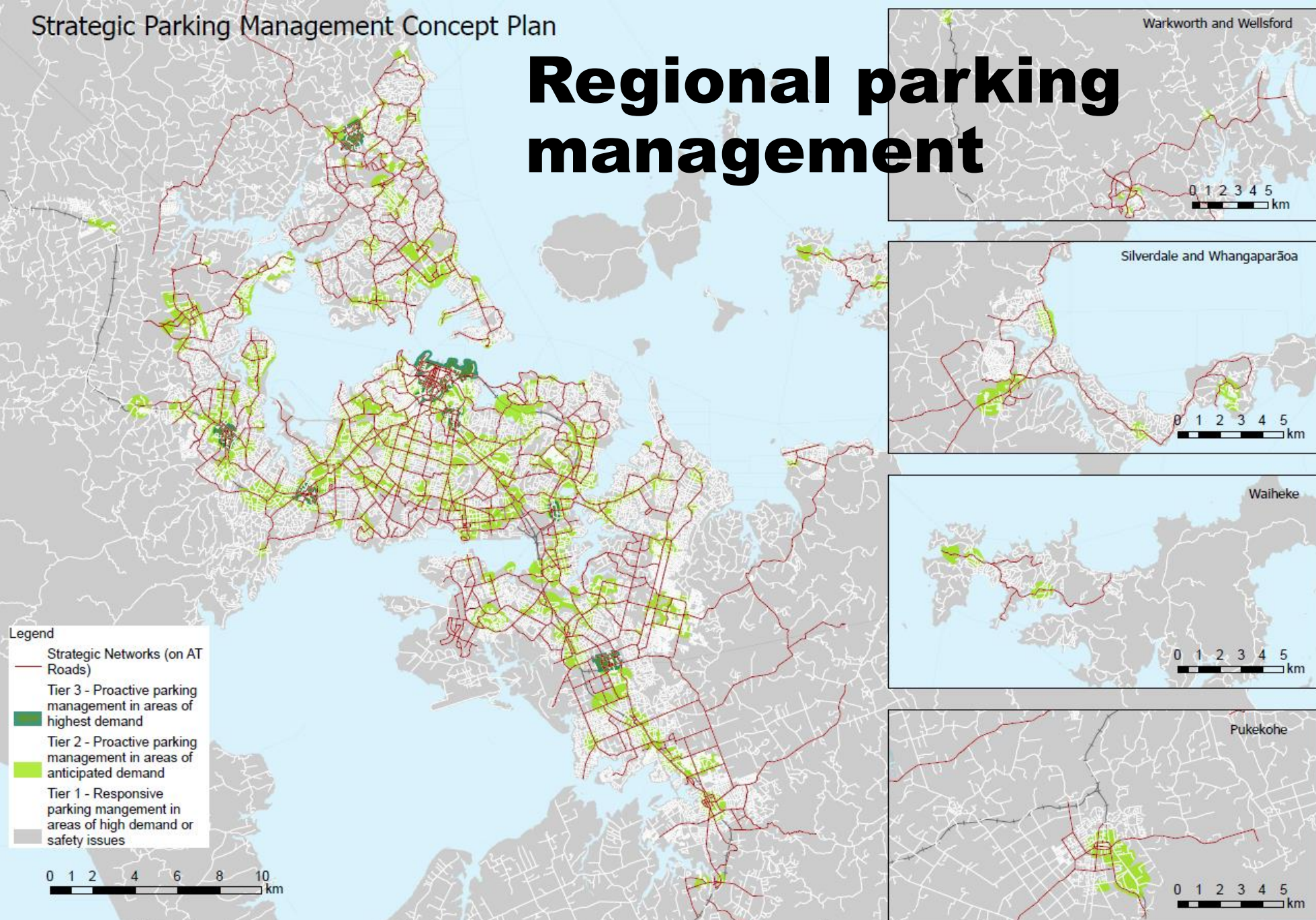


Regional approach to parking management - based on readiness for change

Readiness for change is assessed based on land use and transport in the area



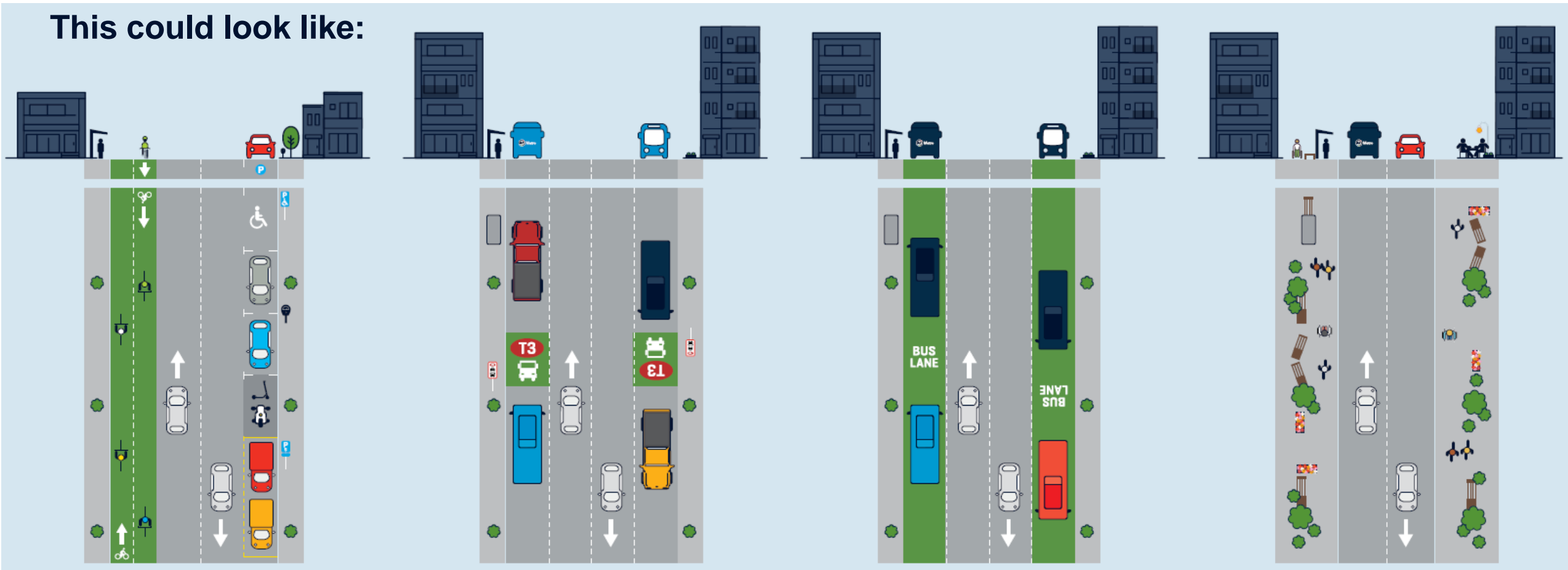
Regional parking management



Delivering a transformed transport system

To deliver at-pace the transport system of the future, we are seeking a mandate to convert parking lanes on the Strategic Transport Network

This could look like:



Communicating the strategic direction

Parking Discussion Document to 'start the conversation'

The Discussion Document was targeted at key stakeholders

- We heard majority **support for the strategic direction**
- Desire to **paint a balanced picture of parking**, reflecting it has both advantages and disadvantages
- The need for a very well developed and sophisticated **ongoing community engagement and communication** campaign, to address the need to 'reposition' parking



Draft Parking Strategy

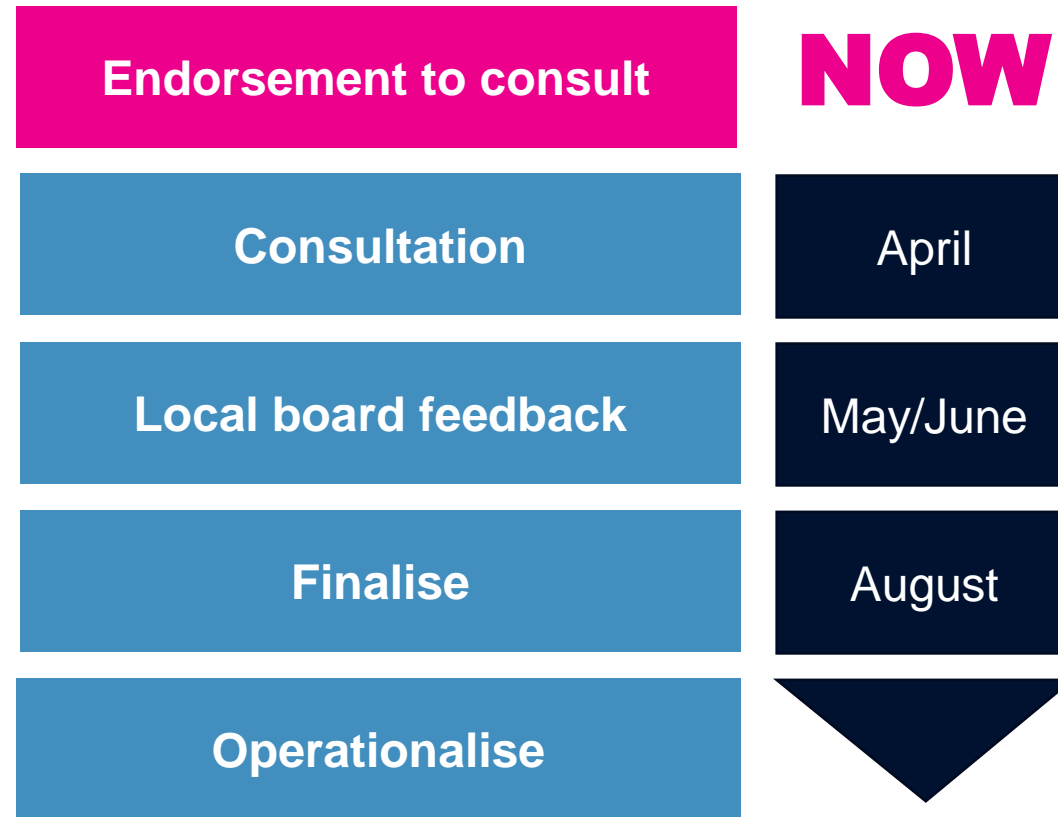
- Primary document
- Outlines the parking story and context
- Strategic direction and objectives
- Objective based policies



Other components of the Parking Strategy



Next steps



We want to hear your views

Go to our website: AT.govt.nz/parkingstrategy

We will report community feedback to you in May,
for you to formalise your feedback in June.

thank you