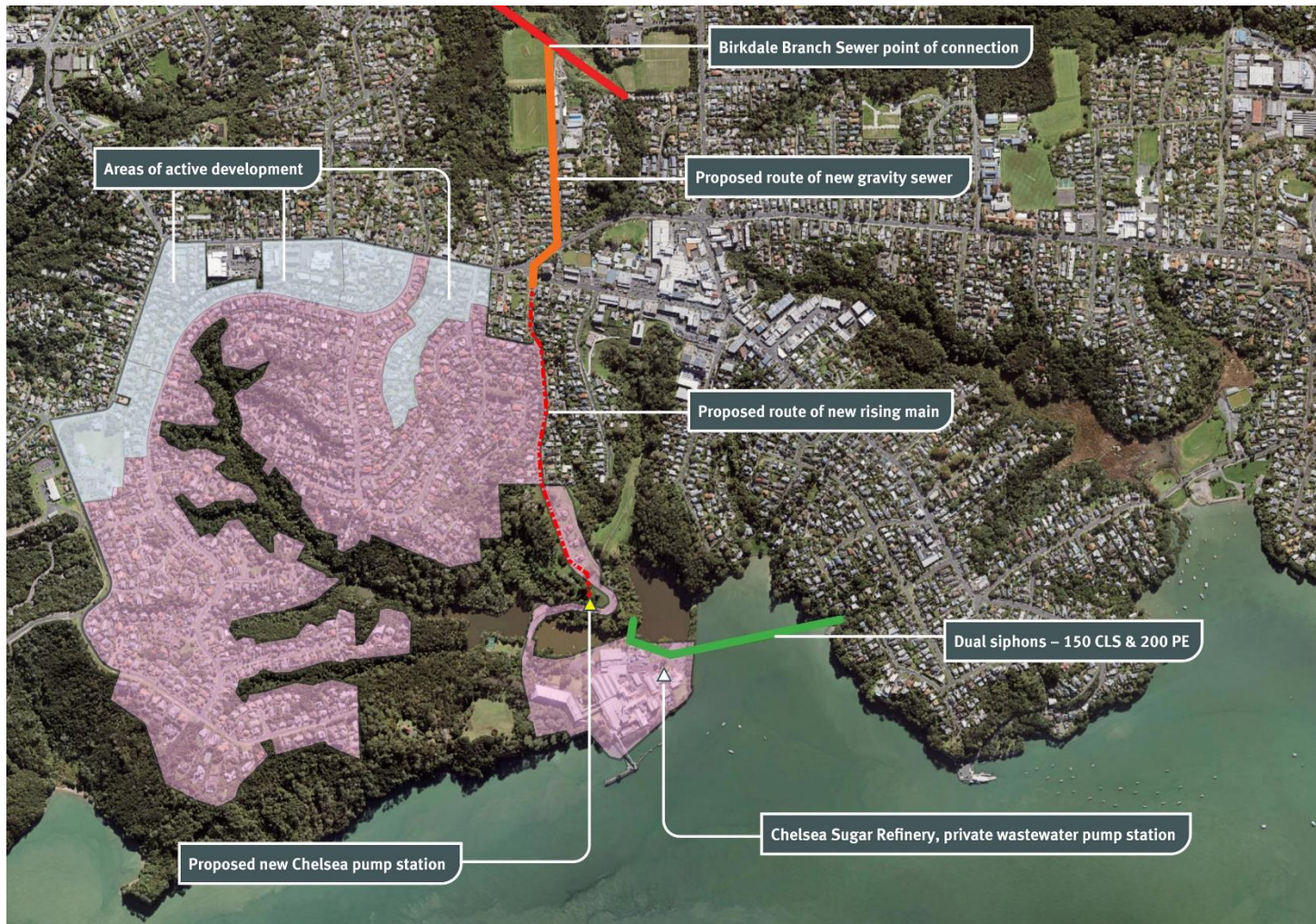


Kaipātiki Local Board

Watercare Briefing Northcote-Chatswood WW Network Upgrades New Chelsea Pump Station

7 July 2021

Project Details



Project Benefits

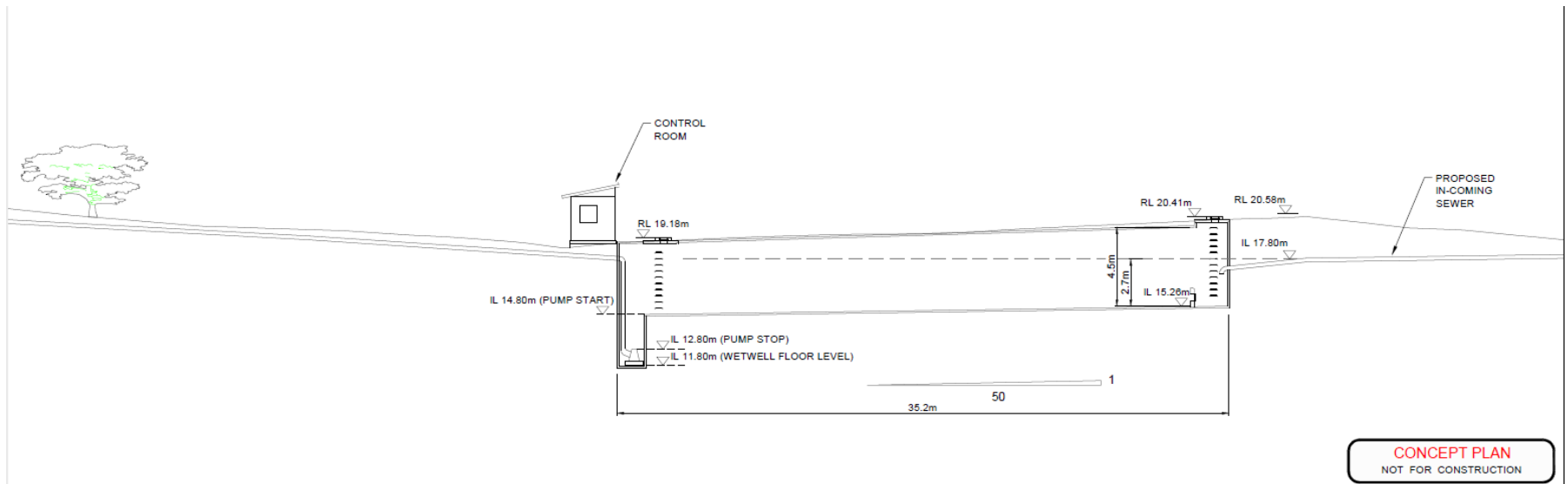
- Decommission existing wastewater siphon
- Underground temporary pipeline in Chelsea Park
- Increased network capacity
- Reduced wet weather overflows
- Renewed watermain

Project Details

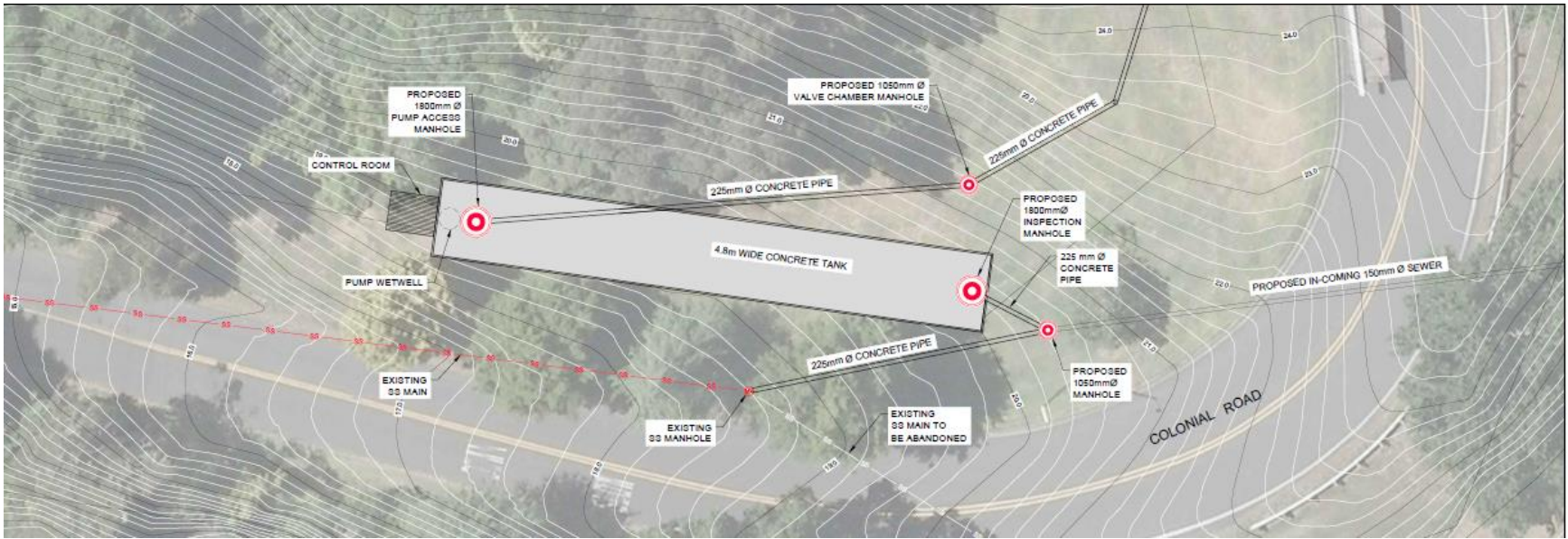
- New Pump Station
- New Rising Main
- New Gravity Pipe
- Decommission Wastewater Siphon
- New rising main from Chelsea Sugar Works
- New engineered overflow pipeline from pump station
- New watermain to Chelsea Sugar Works

New Assets- Pump Station

- New pump station and storage tank within the Chelsea Heritage Park, at the bottom corner of Colonial Road, neighbouring the Chelsea Sugar Company facility
- Storage tank capacity of 500m³
- An access road and easement will likely be required at the pump station site for future maintenance, and may require permanent site fencing to prevent unauthorised access for health and safety reasons



New Assets- Pump Station



New Assets- Rising Main

- A new rising main 790m in length. Extending from the pump station site, along Colonial Road to Highbury Bypass.



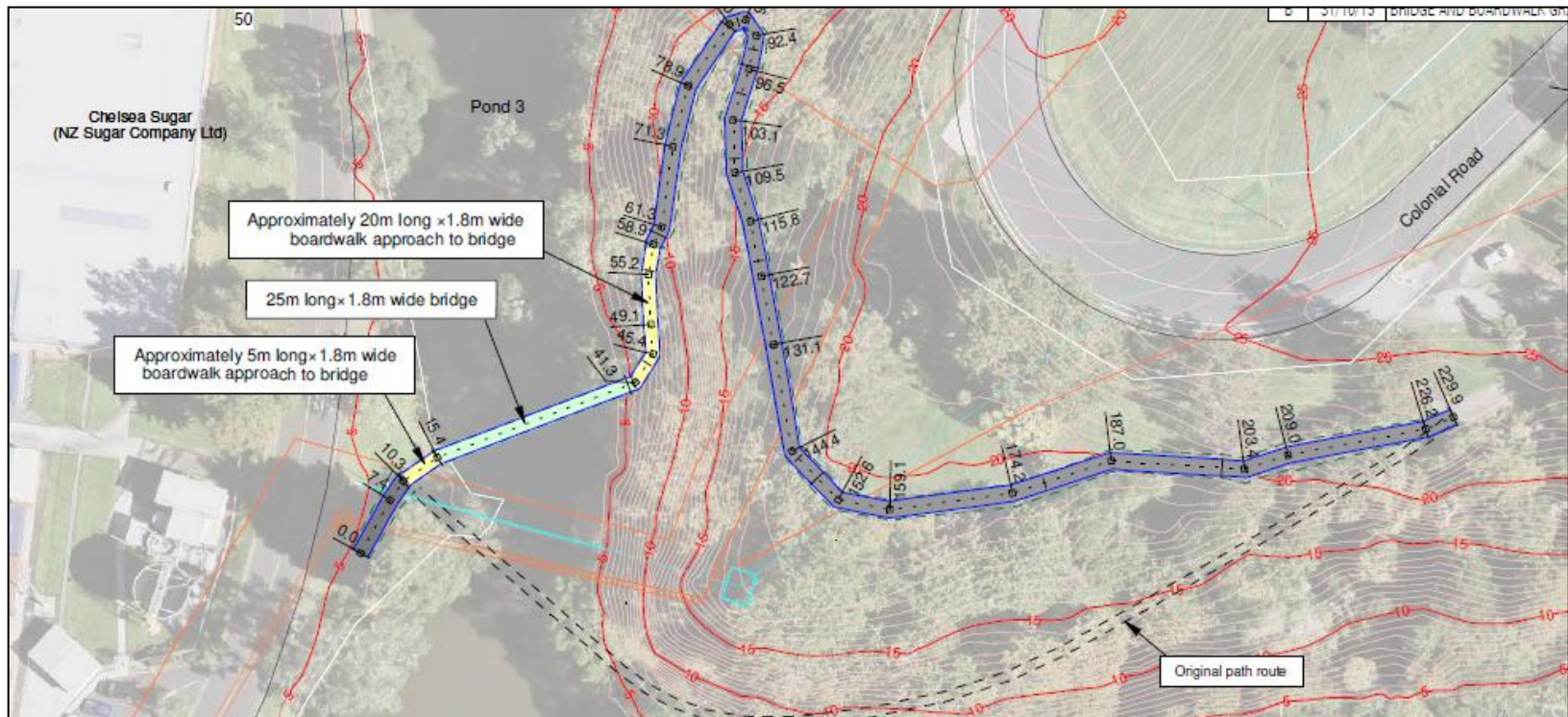
New Assets

- A new gravity pipeline 780m in length, connecting to the top end of the rising main which will then extend across Highbury Bypass to the Birkenhead War Memorial Park, terminating and discharging to the Birkdale Diversion Branch Sewer.



New Assets

- A wastewater servicing pipeline to the Chelsea Sugar factory which we are coordinating with Auckland Council to be underslung to the foot bridge and following the alignment of the walkway.



Our plan

