

Achievements Report

Māngere-Ōtāhuhu Local Board

2017 – 2019



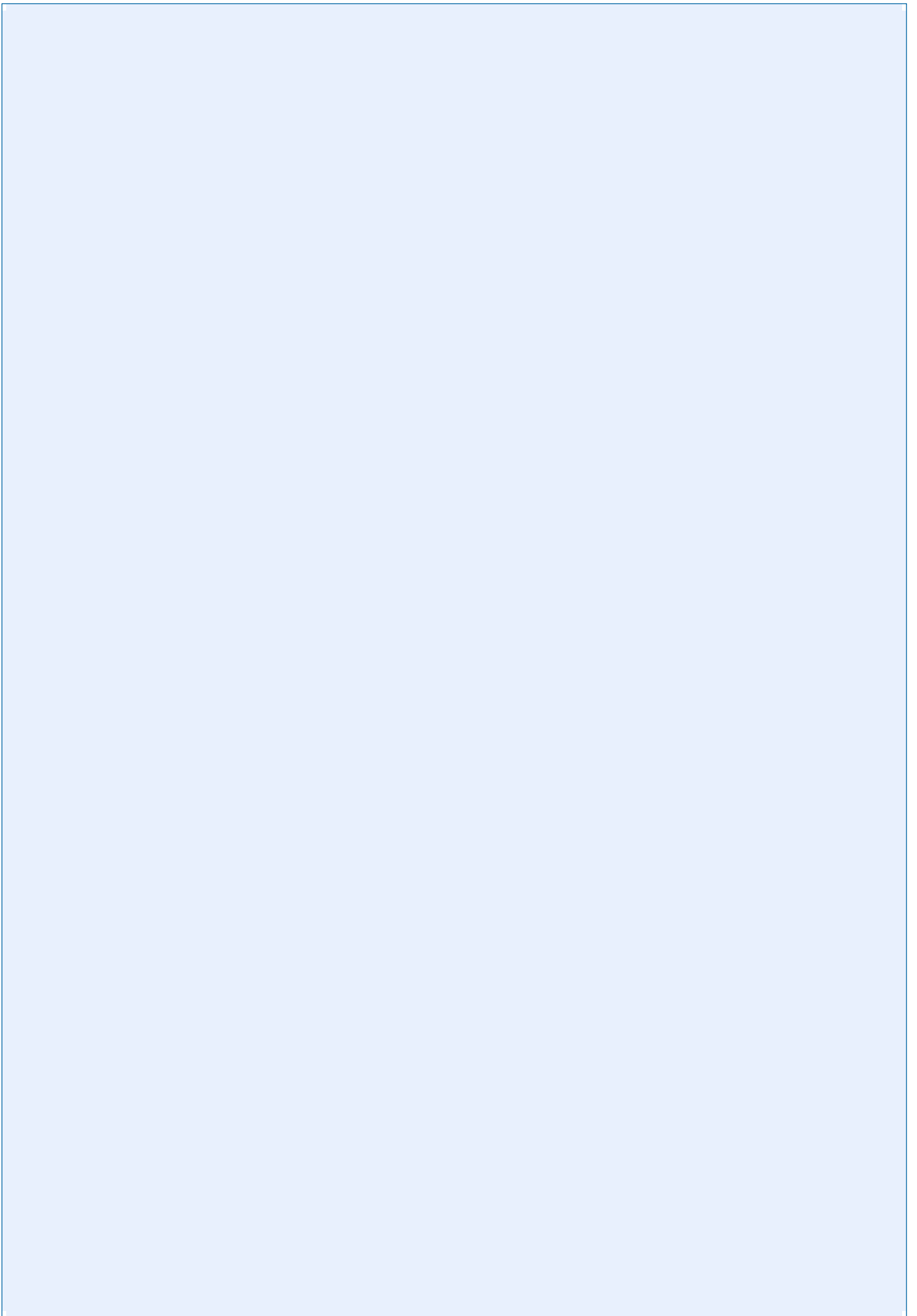


Table of Contents

Message from the Chair.....	4
Māngere-Ōtāhuhu Local Board members.....	29
1 Local Board Plan outcomes and achievements	7
1.1 A strong local economy	7
1.2 We are the heart of Māori and Pasifika culture	9
1.3 Protecting our natural environment and heritage	13
1.4 A well-connected area	17
1.5 Facilities to meet diverse needs.....	20
1.6 A place where everyone thrives and belongs	25

Message from the Chair

It is my pleasure to present this term's Achievements Report on behalf of Māngere-Ōtāhuhu Local Board. This is an opportunity for the local board to present its achievements and progress on projects and initiatives the board has taken in the last three years towards achieving our community's shared vision for the area.

At the start of the term, we consulted many on their vision for the area and adopted the Local Board Plan 2017 which sets out priorities. The board has achieved positive results on the set priorities via collaborative work with others including Māngere-Ōtāhuhu communities, Governing Body, Council Controlled Organisations, other local boards and local providers. For example, supporting youth via various programmes, upgrading community facilities and reviewing concepts for playground renewals, and supporting environmental initiatives. The board is continuously prioritising projects to deliver with a limited budget.

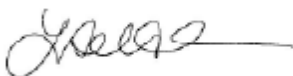
We are proud to see the progress we have made towards community safety. Our commitment is to work with key partners such as police, Māori and Pasifika wardens, and groups with our targeted focus in the local board area. We celebrate the diversity of people and continue to build strong relationships with local mana whenua and urban Māori.

We persist towards continuous improvement of local parks and specific provision of active play spaces, especially for our tamariki.

On behalf of the Māngere-Ōtāhuhu Local Board, I extend our sincere congratulations to local community members. We thank you for working alongside the board and encouraging many others to get involved to achieve outcomes for our area and its communities.

The board welcomes the ongoing opportunity to work closely with you.

Ia Manuia



Lemauga Lydia Sosene
Chairperson
Māngere-Ōtāhuhu Local Board

Māngere-Ōtāhuhu Local Board

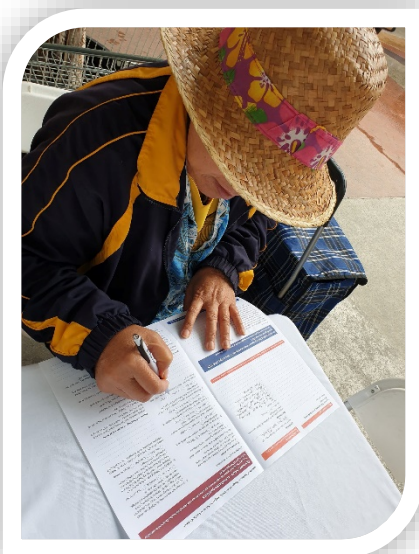
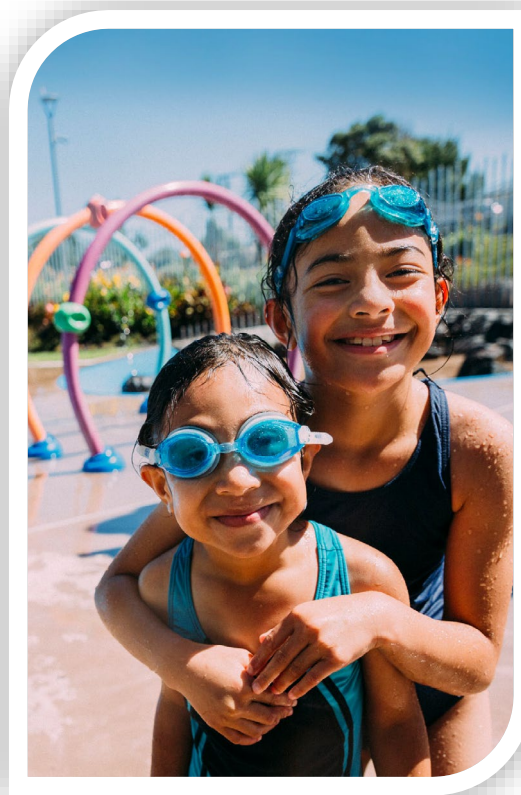
Auckland's unique governance model is made up of the Governing Body (Mayor and 20 Governing body members) and 21 local boards. Māngere-Ōtāhuhu Local Board, with seven elected members, serves one of the southern local board areas and is responsible for decision making on local issues, activities and services and providing input into regional strategies, policies and plans.

Māngere-Ōtāhuhu Local Board Plan 2017

The three-year Local Board Plan sets out the framework for local planning, action and advocacy for the local board area. The Māngere-Ōtāhuhu Local Board Plan 2017 focussed on the following six outcomes for the local area:

1. A strong local economy
2. We are the heart of Māori and Pasifika culture
3. Protecting our natural environment and heritage
4. A well-connected area
5. Facilities to meet diverse needs
6. A place where everyone thrives and belongs

The board has consulted with the local communities to develop its three-year plan, building on its previous two plans. The plan provides a basis for working towards the mayor's vision of 'Auckland to be a world class city where talent wants to live', at the local level.



Public engagement is an essential part of how the board sets direction, takes decisions on priorities and projects for the local area and communities.

Engagement, consultation and feedback from local communities also informed the 10- Year Budget, annual plans that lead to local board agreements every year with budgetary commitments.

In our advocacy role, Māngere-Ōtāhuhu Local Board has made presentations to hearing panels and governing body to ensure that local views are heard and considered for regional plans, policies, strategies and bylaws. The board has also made submissions to central government on matters relevant at a local level and communities.

The local board plan outcomes have provided direction for work programme development, projects and initiatives and also issues the board have advocated to the Governing Body and Council Controlled Organisations (CCOs), on behalf of communities.

Local Board Plan outcomes and achievements:

Māngere-Ōtāhuhu Local Board has been working collaboratively to progress and achieve results in the six outcomes areas of its Local Board Plan.

This document highlights the board's achievements from the last three years, including projects that have started and will be completed in the next term.

1. A strong local economy

Our area attracts and supports businesses. Our community has a range of opportunities to gain skills and employment.

Objectives:

- a) *Local town centres are attractive, lively and safe.*
- b) *Establish partnerships to increase tourism and investment and help achieve Māori economic development outcomes.*
- c) *Improve skills training, and increase employment opportunities for the local workforce, especially Māori and Pasifika youth.*

The local board sees the importance of fostering strong local economic development towards the benefit of all residents. Bustling communities in vibrant town centres and neighbourhoods are what reflects thriving communities in a growing economy, and opportunities for employment for local people. Each of our town centres has its own unique identity and gives our local community a sense of local pride within a large metropolitan city.

The local board has worked to build meaningful relationships with key stakeholders and five local business associations to enhance the local area. A few examples of projects described below highlight the board's work to promote and assist local economic development and employment:

24-hour South visitor promotion – this online-video campaign has been facilitated by Auckland Tourism, Events and Economic Development (ATEED) for last three years in partnership with the Airport Tourism Group. It leverages Māngere-Ōtāhuhu's strong Pacific and Māori culture, showcasing local attractions and significant sites in South Auckland to visitors as well as Auckland residents.

Young Enterprise Scheme (YES) – The scheme encourages year 12 and 13 students to develop creative ideas into actual businesses, complete with real products and services and experience real profit and loss. The board supported local secondary schools to take part in the programme.

PopUp Business school – In partnership with Ōtara-Papatoetoe Local Board, Ministry of Social Development and Auckland Tourism, Events and Economic Development (ATEED) the board supported this initiative of a 10-day business school programme. The project was taken-up and delivered, in the local work programme for the first time in FY 2018/19.

Youth Connections – Māngere-Ōtāhuhu Along with the neighbouring local board, OTThe programme focuses on meaningful youth engagement, training and education with aim of

viable employment pathways. Two achievements of significance are the projects, 'Passion to Profession' and Driving Licences for Students programme.

Capacity Building: Business Improvement Districts and community

– The board partners with the five local business associations and funds various activities in achieving economic and placemaking outcomes, e.g. funding for a Crime Prevention Officer for Māngere Town Centre and Māngere East Village, CCTV and safety initiative budget and ambassador subsidy. The board supported social enterprise development by local community groups, for instance, funding for Māngere Ōtāhuhu Social

The World Master Game programme – the board leveraged the opportunity of the international event, in collaboration with Auckland Tourism Employment and Economic Development (ATEED), by hosting a successful *Luau* event at the Samoa House in April 2017 to add a distinct Pasifika feature to the international programme.

Māngere Local Economic Development Forum and Business Series – a community-led programme that is building small businesses capacity and networking support for local individuals and groups; supported by arts broker and ATEED.

Enterprise Collective (MOSEC) to further develop Māori and Pasifika cultural enterprises' capacity and capability.



1.1 We are the heart of Māori and Pasifika culture

We celebrate, showcase and share our many cultures, which attract visitors to our area. Our cultural diversity and distinct Māori and Pasifika identities are reflected in, and enhance, the everyday life of our community.

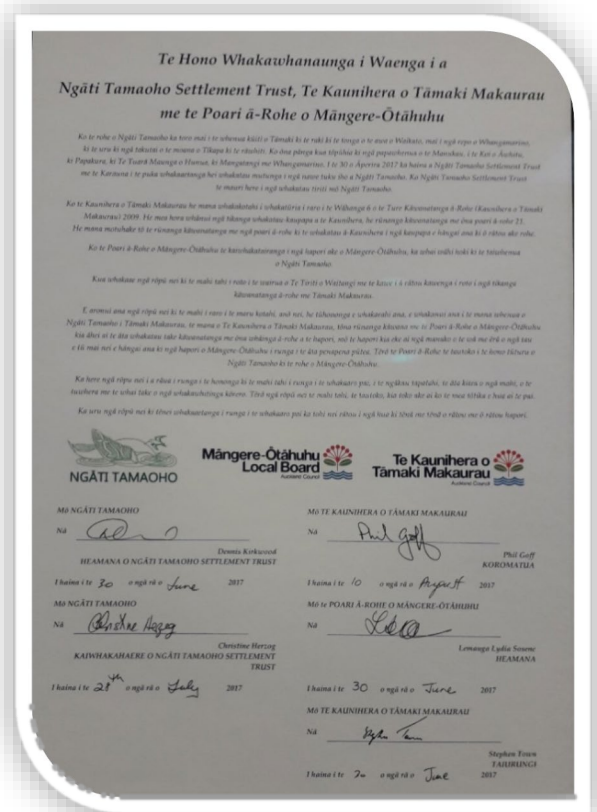
Objectives:

- a) *Our diverse communities enjoy arts and cultural facilities that are vibrant, creative hubs for connecting, engaging and learning, and expressing identity.*
- b) *Increase opportunities for expression of Māori and Pasifika arts and culture.*

Delivering on Auckland Council’s commitment to Pasifika and Māori at local level is a priority for our board. Māngere-Ōtāhuhu local board area has a large population that identify as Pasifika (60%) and Māori (16%) which gives a unique identity to our area.

The local board has continued to build its relationship with mana whenua and marae such as Pukaki Marae and Te Ākitai Waiohūa over the term. The board signed a relationship agreement with Ngāti Tamaoho 2017, board representatives on the Tūpuna Maunga o Tāmaki Makaurau Authority and Southern mana whenua Iwi steering groups. Other relationships were also established through projects like Wai Care programme, naming of new local streets with Māori names and Te Kete Rukuruku.

The board recognises the rich cultural history of the area and celebrates cultural diversity of our area by supporting events, language weeks in libraries and community efforts; e.g. Waitangi Day, Pasifika cultural events, Matariki, Christmas, Lunar New Year, Diwali events and language week programmes which are supported by local libraries.



A few projects are noted in this report to highlight achievements in this outcome area:

Community Arts Brokering – the board funds a local arts broker and a range of community art projects for local communities.

The annual programme of community-led arts and culture projects gives opportunities for local groups and individuals to deliver initiatives showcasing local talent and diversity. is facilitated by the arts broker and are The broker also supports building business capacity of artists.

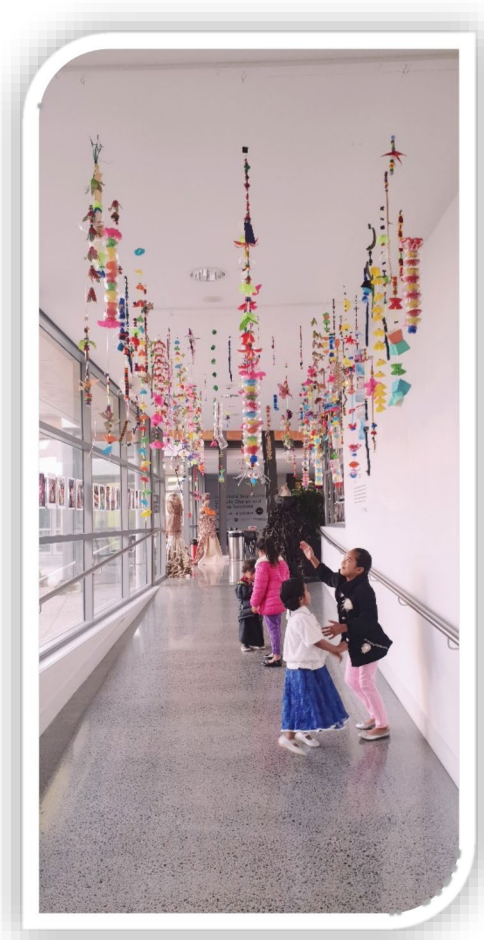


Pop-up arts activation – the aim of this initiative is to create opportunities for communities to engage through innovative art experience – ‘Pop-up Marble’ in Māngere town centre and Māngere Bridge Village and ‘Pop Riders’ at Toia and Māngere Bridge Village in May 2017 and March/April 2018.

Tuia Te Here Tangata Leadership Development Programme – the board has supported local rangitahi to take part in the national Tuia programme over the last three years. Young people build their leadership skills and board provides mentoring alongside. This in turn enables rangitahi to take up leadership in local communities.

Te Kete Rukuruku - Māori naming of reserves and places – The project involves inviting mana whenua to provide a Māori name and narrative for parks. It is expected that the gifted names and narratives will be adopted by the local board for use as dual names to enrich the stories of parks and support the Māori language to be visible, heard, spoken and learnt. The project aligns with the board’s strong support and advocacy for council’s Māori language policy to give visibility of te reo Māori. It seeks to capture and tell the unique Māori stories of Māngere-Ōtāhuhu and Tāmaki Makaurau. It is a partnership between Auckland Council and the 19 mana whenua of Tāmaki Makaurau. Te Kete Rukuruku responds to feedback from mana whenua about the current naming practices. A first list of names of park have been short listed and in the next term a second list will be finalised.

Signature arts and culture event – this event has evolved into a community-led series of small events to train and showcase local talent. These are free, family fun series of activities and events to raise profile and celebrate Māori and Pasifika culture of the local area.



Libraries – the board see local libraries as important community hubs for all age-groups, and have maintained opening hours in local libraries through local funding. A variety of programmes are delivered to celebrate local communities, cultural diversity, languages and heritage at our local libraries. Examples are, Matariki, Te Tiriti o Waitangi programmes, story time, Wriggle and Rhyme, summer reading programme, Pasifika T-Shirt Design competition, Book Clubs, Digital Literacy classes to customers with disabilities and language weeks for many languages such as Te reo Māori, Tongan, Samoan, Sign, Fiji, Niuen, Tuvalu and Tokelau.



1.2 Protecting our natural environment and heritage

Our environment is respected. Our spectacular natural heritage sites are national treasures. They are protected and enhanced for everyone to enjoy now and in the future.

Objectives:

- a) Manukau Harbour and its coastline is clean, improved and protected.
- b) Local heritage is protected, enhanced and recognised.
- c) Reduce waste by improving waste management practices in the local area.

Māngere-Ōtāhuhu Local Board is surrounded by Manukau Harbour and Tamaki Estuary on its three sides. The board is committed towards protecting its natural environment and heritage area and also improving waste management practices. With growth and development in the area, the board has placed priority on maintaining local green areas, riparian planting.

In this term the board has supported several projects to enhance water quality of our streams and Manukau harbour. The board is working collaboratively with Tūpuna Maunga o Tāmaki Makaurau Authority to preserve our maunga and history; and with mana whenua and matawaka to celebrate and increase Māori participation in council processes. Here are few projects that the board has delivered in this term to achieve this outcome:

Manukau Harbour and Tamaki Estuary Environmental Forums – The board supports both forums. The first is a joint committee comprising 9 local boards that border the Manukau Harbour, and the second is voluntary group. Both aim to advocate for thriving, dynamic and healthy ecosystems for Tamaki Estuary and Manukau Harbour. The forums have resulted in community involvement and partnerships for land-based projects and beach clean-ups (e.g. with enviro-schools, Conservation Volunteers New Zealand, Seacleaners and sailing clubs)

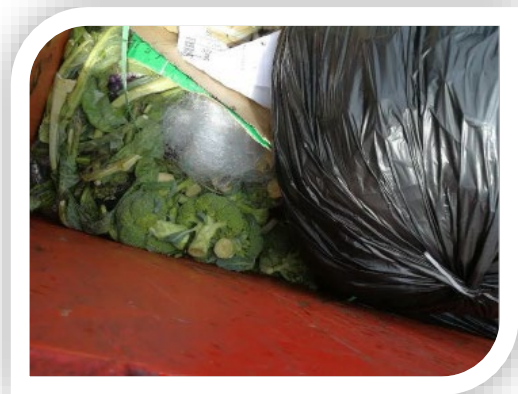


Pūkaki Crater Restoration – this programme is being co-delivered with Te Ākitai Waiohū, mana whenua will see revegetation of the south-west crater rim. This is a step towards local board's aspirations of supporting mana whenua to provide a Kaitiaki role over places such as Pukaki Crater to protect and enhance our heritage.

Auckland's Ngahere (Urban Forest) Strategy – The board supported spatial mapping of the tree canopy cover for the local board area, as the first stage of a three-year programme. The results will inform the board better understanding of the extent, type and age demographics of the urban Ngahere. The next steps will focus on specific programmes to identify potential sites for tree planting, with the aim of improving tree canopy coverage in the local area

Restoring Mauri of the Oruarangi Creek and Tararata Creek – the local board supports engaging with communities at both Makaurau and Papatuanuku Kokiri marae through this project leading to improving mauri of Oruarangi and Tararata Creek waterways.

Business waste minimisation education programme - focusses on collaborating with local businesses in the area to educate them on how to better manage their waste. This project compliments regionally funded waste minimisation education programmes that target individual households and community organisations, and help them to improve water quality in the area by reducing waste entering the storm water system as well as reducing the amount of waste that is going to landfill (assisting with the goal to have a zero waste Auckland by 2040).



Māngere-Ōtāhuhu Local Board Community Upcycling Initiative



Wai Care schools – the ongoing project is working with schools to undertake riparian restoration and water quality monitoring of waterways e.g. Harania, Tararata, and Oruarangi Awa. This project aims to connect students to their local places creating ownership while also improving water quality, biodiversity and aesthetics.

Tree planting programme aims to plant trees around playgrounds to provide shade and increase the tree canopy of our parks which will improve visual amenity as well as landscaping.

Ōtāhuhu Portage Route – this is a multi-year project and also part of the Greenways (Local Paths) Plan which aims to develop linkage from Māngere through to Onehunga and across the ‘portage’ to link with Maungakiekie-Tāmaki paths. The local board acknowledges the significance of the Portage Crossing and has been advocating actively for funding of this project.



Community capacity building for resource recovery – Local, community initiatives to build awareness, education and develop alternative actions for sustainable practices are actively supported by the board. This project supports local groups interested in being part of the resource recovery network and a trade and exchange community hub was set up to help with repurposing, upcycling and other waste minimisation initiatives.



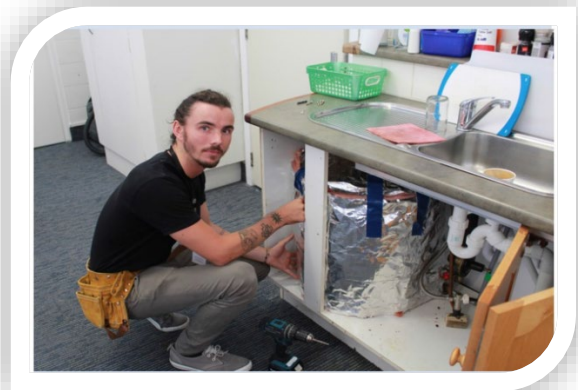
Ecological volunteer and environmental programme – groups of volunteers are supported under this programme to carry-out ecological restoration and environmental programmes in local parks including community planting events, plant and animal pest eradication, litter and green waste removal and beach/stream clean-ups.

Pest free Ihumatao – is an iwi-led, catchment-wide pest control and ecological restoration project which will see weed and animal control work in strategic areas of Oruarangi Awa.

Weed education – the programme encouraged residents to control weeds on their property through a customised brochure with photos, and information about weeds, for the local area was developed and 3,000 copies were distributed locally.

Healthy Rentals – a large percentage of our families in our area, live on low incomes and in rental accommodation. This programme targets private rental properties with housing quality issues. It delivers in-home advice and free installations for tenants and subsidies for landlords to create warmer, drier rental

homes along with reducing household energy use and associated carbon emissions.



1.3 A well-connected area

Māngere-Ōtāhuhu is well connected by public transport, cycleways and walkways, making it easy for everyone to get around.

Objectives:

- a) *A well-connected area, part of a great, affordable public transport network that makes it easy for all to move around.*
- b) *Attractive, accessible and safe cycleways and walkways.*
- c) *Safe, attractive and well-maintained streets for all.*

Provision of well-connected, accessible and affordable public transport continues to be a high priority for the local board. Our road and public transport infrastructure need to keep pace with the growth our area is experiencing. It is important for our young people to access education, training and employment as it is for families.

The board has successfully advocated to and worked in collaboration with the Governing Body, Auckland Transport on and also New Zealand Transport Agency (NZTA) for advocating for better infrastructure, safe and well-connected cycleways, attractive and well-maintained streets, heavy and light rail integration for central city to airport along with a co-ordinated investment for Māngere East precinct to achieve a high-quality built area for our community.

In this term the board prioritised delivery on significant projects, largely through its Local Board Transport Capital Fund. Projects to highlight achievements are as follows:



Te Ara Mua – Future Streets - a successful and award-winning project that aims to make neighbourhood streets safe for residents, walkers and cyclists and promote positive social and health outcomes. A number of organisations, including Auckland Transport and the Transport Agency, teamed up with the Māngere-Ōtāhuhu local board to fund this major initiative.

Windrush Close and Waddon Place Link– the project was delivered by Auckland Transport in the Māngere Town Centre with the aim of creating attractive, accessible and safe cycle ways and walkways.

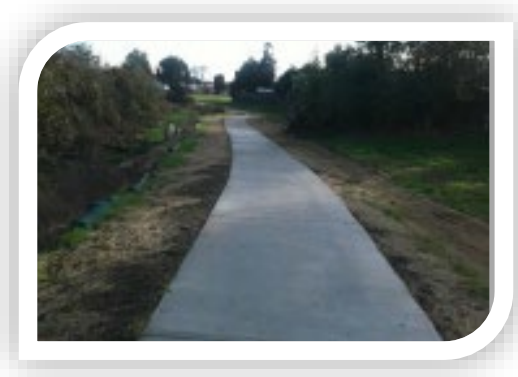
Māngere East town centre (Footpaths upgrade) – the board has committed \$338,000 from towards this project with will see footpath upgrade on Yates Road, east corner of Walter Massey Park and a new footpath from Yates Rd to Massey.

Māngere town centre Bus station upgrade – a safer and accessible bus station with significantly increased amount of seating, weather protection area for passengers, toilets and cycle racks was delivered under this project.

Bader Drive improvements includes two projects:

- Widening Bader Drive in front of the Cosmopolitan Club – which was delivered to improve safety and connections.
- Building a new two-lane roundabout at the intersection of Bader Drive and Idlewild Road – a new two-lane roundabout will be built at the intersection of Bader Drive and Idlewild Road. The project is progressing well and is scheduled for completion by end of 2019.

Māngere-Ōtāhuhu Local Paths (Greenways) Plan 2016 – The board has developed a comprehensive Local Path Plan (also referred to as the ‘Greenways’ plan), which aims to provide safe, pleasant and educational walking and cycling pathways through the local area. The plan incorporates priority routes for planning and delivery over the next ten years, clustered into long, medium- and short-term groups for planning and delivery.



The Norana Esplanade Walkway and Ōtāhuhu Portage route – Totōia, are both part of the Greenways network. The former is multi-year project with vision of connecting Kiwi Esplanade - Māngere Bridge, to Favona. Concept design for this project has been finalised and physical work will start in 2019. The Ōtāhuhu Portage route is of historical significance as the travelling route for early Māori, and later European settlers. The multi-year project aims to recreate the historic route and will open the area for recreation, walking and cycling. The board is working in partnership with mana whenua right from the start of the project.

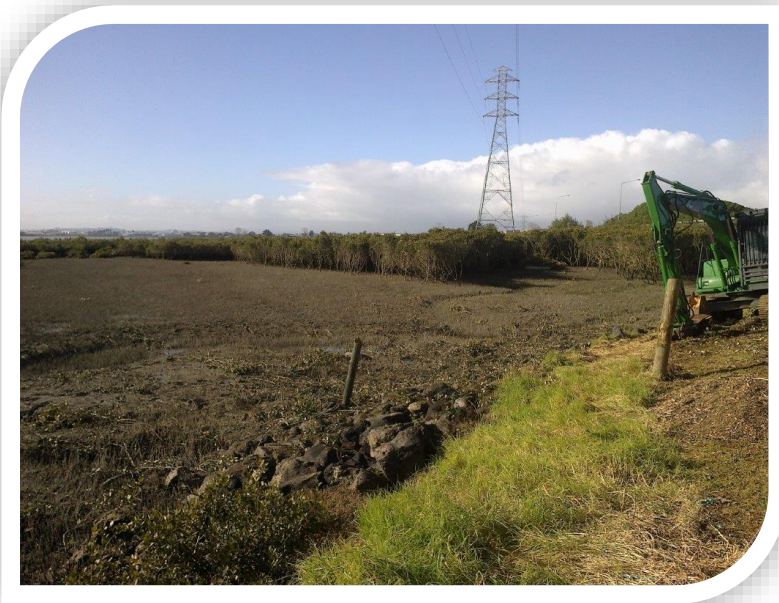
Ōtāhuhu town centre transformation and improvements to streetscapes is a major construction project. The detailed design are now finalised and contracts in place for works to commence, beginning on Station Road at the Walmsley Road end and continuing towards Great South Road, in a staged manner. Associated work also involves underground stormwater upgrade.

Boggust Park Walking and Cycling

Path – aim of the project is to improve the park and walking connections and is progressing well.

Bus Shelter project – the board prioritised investment to improve bus facilities in the area including building new shelters. is working with Auckland Transport to deliver this project. Aim of the project

Ashgrove Reserve Cycle Route – this project will provide a new walking and cycle path through Ashgrove Reserve and was originally part of the 'Future Streets' project. The works are expected to start during summer building season and continue in the next term.



Mangrove removal (seedlings and regrowth)

– An initiative of mangrove management from previous local board plans were completed to improve visual amenity and recreational access to the Manukau Harbour. Removal of mangroves for few sites that had consent within the Māngere Inlet, at Norana Park and Mahunga Drive were completed.

1.4 Facilities to meet diverse needs

Our community spaces are part of a first-class network. They are popular gathering places used for a variety of activities led by diverse local communities with many interests. They offer choices for people from different cultures and life-stages to take part in local life.

Objectives:

- a) *Existing facilities and parks and open spaces are high-quality, well maintained and accessible to diverse users.*
- b) *Collaboration and best use of local community assets and resources is encouraged.*
- c) *Local spaces are popular community gathering places that enhance our lives.*

The local area includes a variety of facilities, sports parks and gathering spaces along with coastal area, which also have significant cultural value for people to enjoy and connect. The board has responsibility towards enhancing these facilities along with developing new facilities, and for that the local board is always prioritising investment. The board's objective is to increase open spaces in the area and ensure the accessibility and amenity of existing parks.

A few projects are noted in this report to highlight achievements in this outcome area:

Facility Partnership grants – the board allocates this local grant for investment in facility improvements on council-owned land, the board have supported sport and recreation groups, e.g. Manukau Rovers Rugby Club towards the build of a new toilet facilities for women; upgrade of Māngere Bridge Bowling Club; and Māngere Centre Park Sports Association for club house renovations.

Community leases – the local board has been supporting several community groups through nominal-sum leases to achieve positive outcomes for our people. Local facilities are on high demand for places for people and groups to gather, meet, engage and participate in activities. These facilities are maintained by the council for wider community benefit.



One of the many examples is for instance that where the board granted a community licence to occupy and manage agreement to Ōtāhuhu Business Association Incorporated for the ground floor of the former Ōtāhuhu library building. The license allows for space to the Ōtāhuhu-Māngere Youth Group (OMYG) as an upcoming group, also with affiliation to the Ōtāhuhu Business Association Incorporated to carry out its activities. The OMYG is a network of youth groups whose focus is to provide an inclusive and accessible environment where young people can come together to connect, learn, interact and contribute to community wellbeing.

The board has ground leases granted to several sports clubs e.g. Walter Massey Park has ground lease given to Manukau City Association Football Club Incorporated, Samoa Atia'e I Magele Incorporated and House Park has ground lease given to Māngere Combined Tennis Club Incorporated.

Out and About active parks programme— this programme provides a range of 'free to attend' activities and events in local parks and spaces to increase physical activity in the community, e.g. Story times in various local parks, Amazing race at David Lange Park and Seaside Park, Kite day at Murphy Park, Wheels Amazing Race at Kiwi Esplanade etc.

Upgrades/renewals – the board has continued to allocate budget towards renewals e.g. sports fields, park and play area assets, Pool and Leisure Centre, libraries and several toilets were renewed/ build in this term, e.g. Māngere Town Centre Library, Moana-Nui-A-Kiwa Leisure Centre etc.

Provision of Library Service in the local board area— the board has four libraries in the area and continues to allocate local budget towards additional hours of operation which allows increased community access to services. The Māngere town centre library underwent major refurbishments and re-opened in July 2019.



Māngere Centre Park – renewing Māngere Central Park assets remains a priority for the board and includes carpark, path, rubbish bin and seats renewals. The draft concept plan for the park is to be finalised in the next year.

Kiwi Esplanade Reserve toilets – were recently replaced with a brand-new, wheelchair and parent-friendly facility, which features artwork designed by local primary school children.

Norana Park toilets – a new toilet block at Norana Park was installed as part of renewing local assets and amenities in FY 17/18; **Maimi Park toilets** and boat ramp toilets at Kiwi Esplanade were upgraded.

Boggust Park Toilet block – this was a two-year programme and the toilet block will be open in 2019.

Peninsula Point Reserve – renewal of bridge and footpath was a much-needed connection and a new bridge has been delivered in 2019.



Park improvements – the board has been continuously investing in playing fields upgrade e.g. Sturges Park, new playground at Windrush Park, equipment renewals at Bedingfield Memorial Park.

Swimming pools and leisure centres –

The board continues to place a priority on health and wellbeing, and through local targeted rates, provides free access to swimming pools for all adults over 16 years of age. A variety of programmes and services are delivered at the local pools and recreational centres - Tōia - Ōtāhuhu pool and Moana-Nui-ā-Kiwa) to keep local community active.



Māngere Mountain Education Trust -

The board continues to collaborate with the organisation to support delivery of educational programmes based at the centre, maunga and its surroundings. It reaches preschool and school out-of-classroom experiences, tertiary students, community groups and families. Many hands-on workshops, guided walks, displays, demonstrations are delivered here. The board has in previous terms, invested local funds towards restoring the historical Kiingi Tawhiao cottage, adjacent to the centre. As part of the Trust’s work programme the cottage is a focal point for new learning activities on history of the land.

Old School Reserve concept plan – the board has recently consulted on the future use and development of Old School Reserve. This feedback from you will be incorporated into development of concept plans for that reserve.





Tohu o Uenuku - Māngere Arts Centre) – is a state of art facility and vibrant local hub located in the heart of Māngere town centre and provides opportunity to local talent to express and showcase their rich culture. The board allocates budget for more localised programmes and have also supported improvements in the facility for technical equipment upgrades in the theatre and reception area. Many award-winning shows and performances were delivered in the

course of the past three years. The centre continues to be a busy community vibrant hub for art, culture and performance.



A place where everyone thrives and belongs

Our communities have safe and healthy neighbourhoods. Our actions ensure positive prospects for the future of children and young people. We come together to celebrate our cultures. We are active and involved in local matters.

Objectives:

- a) *Young people are engaged, have a voice and contribute positively in local matters.*
- b) *Increase the sense of safety in neighbourhoods and reduce harm from gambling, alcohol and synthetic drugs.*
- c) *Increase opportunities for active, healthy living, and community involvement and connectedness.*

Māngere-Ōtāhuhu local board area is unique in Auckland due to its large young population and strong cultural and family orientation. The local board has strong focus on education and employment of young people to build their leadership skills and foster our peoples' community spirit by supporting projects that connect people to places, neighbourhoods and across diverse cultures. The local board has been supporting projects that encourage intergenerational approach as well as projects towards reducing harm from alcohol and gambling. The board supports the 'Empowered Communities' approach to encourage community-led initiatives and collaborating with groups to achieve shared outcomes.

A few projects are noted as examples highlight the achievements in this outcome area.

Event partnership fund – board provides support to community groups to deliver community events through this non-contestable funding, e.g. Ōtāhuhu Family Fun Day, Māngere East Cultural Festival, Māngere Bridge Food & Wine Festival and Eye on Nature.

Community Volunteer Awards – every two years the board delivers volunteer awards to recognise and celebrate the work done by many passionate and committed volunteers in the community. The most recent awards function was held at Fale o Samoa with 155 awardees and around 250 supporters.



Citizenship, ANZAC and openings – The board supports civic events in the local area. Citizenship ceremonies in conjunction with the Department of Internal Affairs are held regularly for local residents. ANZAC Day services are held in partnership with Returned and Services Associations (RSA) Returning Service Officers Associations in the local area.

The board funded the installation of a new flagpole in partnership with the Ōtāhuhu RSA and Ōtāhuhu Business Association. ANZAC day celebrations are held in front of the World War 1 monument in Otahuhu and the pole will be used for civic commemoration services and to mark exceptional occasions of national significance.

The board supported **installation of a memorial plaque and bench at Kiwi Esplanade Reserve** following the request from the family of a prominent community member, Bridget Whitaker. The plaque memorialises the work she has done for local communities.



Community grants – numerous groups receive local grants through a contestable process and deliver a range of initiatives that are community led and focus on shared outcomes of the board.





Youth Capacity Building and Participation

– through this programme the board funds a youth scholarship and hosts a youth conference. ‘Voice it Out – Hackathon’ was delivered under this programme by Do Good Feel Good group at the Māngere Arts Centre in FY18/19.



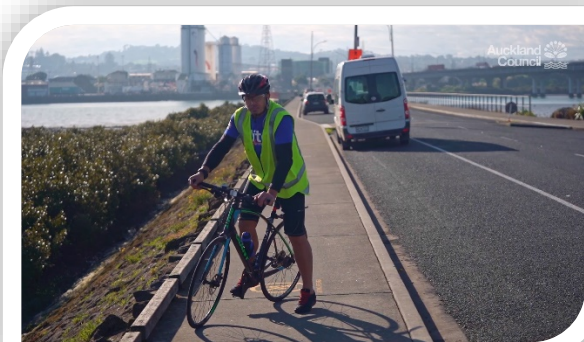
Youth Action Plan – As an area with the most youthful population in the city, the board is keen to deliver on strategic projects of interest to support youth. A comprehensive ‘Youth Action Plan’ is to be finalised to encourage youth participation in local decision making, empowering youth to have influence on issues they are passionate about, creating opportunities for youth sector collaboration.

Community-led response to alcohol licensing and advertising – reducing harm from alcohol and gambling remains a significant concern for the board. The board has continued in supporting the local communities to be equipped to make objections to alcohol license applications (new applications or renewals) with the idea of limiting new applications and seeking better conditions with regards to existing licences such as reduction of advertising. Over time the board and communities are seeing successes with examples where as applicants have agreed to changes or when license has been denied by the District Licensing Authority based on objections raised by communities.

Māngere-Ōtāhuhu Local Board Accessibility Action Plan 2017-2020 – the board prioritises accessibility and adopted this plan to improve outcomes for people with access needs. The principles and approach will inform many projects and initiatives in the coming years.



Māngere Bridge Community Safety Working Group (MBCSWG) – the ongoing noise and safety issues at the Māngere Bridge area, especially at night, resulted in community-led efforts to take leadership, with support from the local board. A working group made up of a cross section of stakeholders has formed, who discuss and initiate work to improve safety in the Māngere Bridge. The group has supported launch of a community-led project ‘Caring for Māngere Bridge’ which is a video campaign urging visitors to respect the area and its people.



Many projects were delivered and progress made to achieve outcomes in the Māngere-Ōtāhuhu Local Board Plan. The board maintains a consistent approach to build on previous plans and will continue to engage with local communities and stakeholders to get the best results possible for the area.

Māngere-Ōtāhuhu Local Board members



Lemauga Lydia Sosene - Chairperson

Shop 17, 93 Bader Drive
Māngere Town Centre
Māngere
Auckland 2022
Ph: 09 256 5133 or 021 287 2255
E: lemauga.sosene@aucklandcouncil.govt.nz



Togatolu Walter Togiama - Deputy Chairperson

Shop 17, 93 Bader Drive
Māngere Town Centre
Māngere
Auckland 2022
Ph: 09 256 5133 or 021 287 1122
E: walter.togiamua@aucklandcouncil.govt.nz



Tauanu'u Nick Bakulich

Shop 17, 93 Bader Drive
Māngere Town Centre
Māngere
Auckland 2022
Ph: 09 256 5133 or 021 835 820
E: nick.bakulich@aucklandcouncil.govt.nz



Carrol Elliott, JP

Shop 17, 93 Bader Drive
Māngere Town Centre
Māngere
Auckland 2022
Ph: 09 256 5133 or 021 729 611
E: carrol.elliott@aucklandcouncil.govt.nz



Makalita Kolo

Shop 17, 93 Bader Drive
Māngere Town Centre
Māngere
Auckland 2022
Ph: 09 256 5133 or 021 534 316
E: makalita.kolo@aucklandcouncil.govt.nz



Tafafuna'i Tasi Lauese, QSM, JP

Shop 17, 93 Bader Drive
Māngere Town Centre
Māngere
Auckland 2022
Ph: 09 256 5133 or 021 286 8855
E: tafafuna'i.lauese@aucklandcouncil.govt.nz



Christine O'Brien
Shop 17, 93 Bader Drive
Māngere Town Centre
Māngere
Auckland 2022

Ph: 09 256 5133 or 021 284 3333
E: christine.o'brien@aucklandcouncil.govt.nz

The board can also be contacted at the address below:

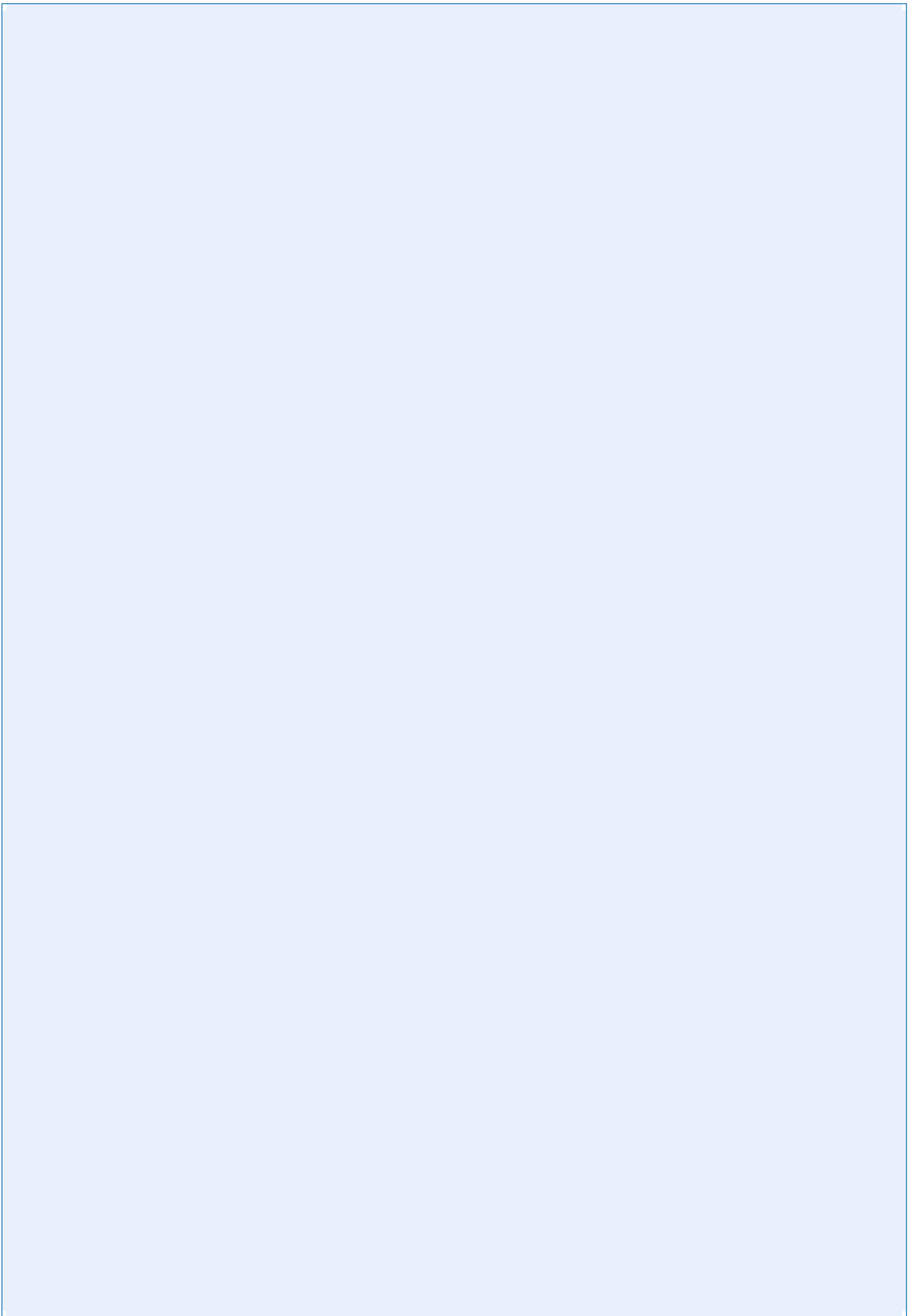
Address: Shop 17, 93 Bader Drive, Māngere Town Centre, Māngere, Auckland 2022

Postal address: Auckland Council, Private Bag 92300, Auckland 1142

Email: mangereotahuhulocalboard@aucklandcouncil.govt.nz

Phone: 09 256 5133

Facebook: www.facebook.com/mangereotahuhu



Find out more: phone **09 256 5133**
or visit aucklandcouncil.govt.nz/

