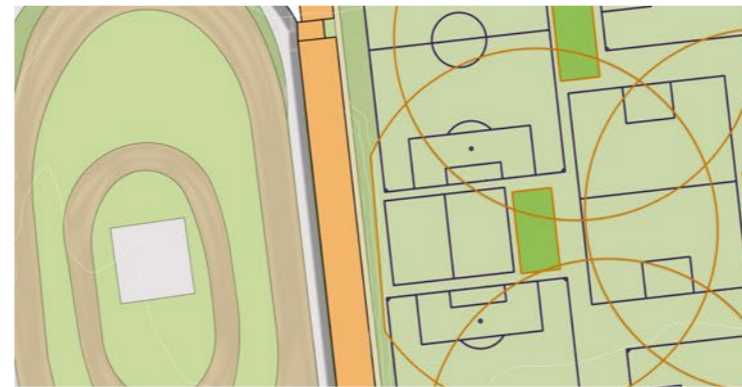


# TE MAHERE MATUA MŌ TE PAPA RĒHIA O WAIKARAKA WAIKARAKA PARK MASTERPLAN

ONEHUNGA, AUCKLAND



TE MAHERE MATUA – MASTERPLAN

ADOPTED FEBRUARY 2021  
UPDATED JULY 2021 FOR PUBLICATION

# RĀRANGI UPOKO

## TABLE OF CONTENTS

### TE MAHERE MATUA - MASTERPLAN

Kupu Whakataki - Introduction .....	01
Mahere Whenua Tauwāhi - Location Map .....	02
Te Mahere Matua Mō Te Papa Rēhia O Waikaraka - Waikaraka Park Masterplan .....	03

### HE HOAHOA MŌ TE MAHERE MATUA - MASTERPLAN DIAGRAMS

Ngā Kōpiringa Me Ngā Take E Mōhiotia Ana - Site Constraints and Known Issues .....	05
Te Hononga I Te Hunga Hīkoi Me Te Hunga Eke Paihikara - Pedestrian and Cycle Connectivity .....	06
Te Mātai Rauropi Me Te Mātai Arowai - Ecology and Hydrology .....	07
Te Whakarātonga Papa Whutupōro - Football Field Provision .....	08
Te Papa Tākaro Kirikiti Me Ngā Wāhi Whakaharatau - Cricket Playing Field and Practice Facilities .....	09
He Autakinga Ara Āmio Waka - Speedway Facilities .....	10
He Tūranga Waka E Marohitia Ana - Proposed Car Parking .....	11
He Whare Take-Tini E Marohitia Ana Me Ngā Āpitianga - Proposed Multi Use Buildings and Additions .....	12
He Hākinakina Kūpapa Noa - Passive Recreation .....	13
Tukunga Iho Onamata, Ā-Ahurea Hoki - Historic and Cultural Heritage .....	14
He Panonitanga Ki Ngā Pātū Me Ngā Taiapa - Modifications to Walls and Fences .....	15

### TE HĀNGAI O TE MAHERE MATUA MŌ TE PAPA RĒHIA O WAIKARAKA KI NGĀ HUA E HIAHIATIA ANA E TE RŌPŪ KAITIAKI MANA WHENUA - ALIGNMENT TO THE MANA WHENUA KAITIAKI FORUM POU OUTCOMES

Te Hāngai O Te Mahere Matua Mō Te Papa Rēhia O Waikaraka Ki Ngā Hua E Hiahiatia Ana E Te Rōpū Kaitiaki Mana Whenua - Waikaraka Park Masterplan Alignment to the Mana Whenua Kaitiaki Forum Pou Outcomes .....	17
---	----

## **KUPU WHAKATAKI**

### **INTRODUCTION**

Covering around 27 hectares of land in Onehunga, Waikaraka Park encompasses a wide variety of recreational uses that are highly valued by the community including a speedway facility sports fields and club facilities. The park also contains a cemetery and a number of historic built features, including its distinctive perimeter stone walls.

#### **Relationship with the reserve management plan**

A reserve management plan (RMP) and masterplan have been created to provide a more holistic approach to managing the social, recreational, natural, cultural and heritage values of the park. Refer to Section 6.0 of the RMP for a description of these values.

Developed concurrently, both plans reflect the wider strategic outcomes and objectives sought by the council, local board, mana whenua and the community. These outcomes are captured through the guiding principles in Section 7.0 of the RMP. This relationship between the masterplan and RMP ensures that the outcomes reflected in the masterplan align with the objectives and policies of the RMP.

#### **Introducing the masterplan**

The masterplan reflects the 30-year vision for the park and illustrates the priorities to guide the Maungakiekie-Tāmaki Local Board on future decisions to develop and invest in Waikaraka Park.

We've developed the masterplan with extensive involvement of mana whenua and current users of the park, and consulted with the wider community in June 2019 and June – August 2020. The importance of te ao Māori (Māori world view) in managing the park is highlighted in Section 4.0 of the RMP, and captured in this masterplan in the table to demonstrate its alignment with the Mana Whenua Kaitiaki Forum pou outcomes.

The local board will continue to work with mana whenua on future development and ongoing use of the park. The local board will also consult further on implementation of the masterplan with park users and the community as guided by the RMP. This process ensures that the aspirations of current and future communities for the park are captured.

#### **Reading the masterplan**

This masterplan document is designed to inform the community about the vision for the park and has been organised into three parts:

- The masterplan is shown on page 01, presenting a complete view of the design.
- The masterplan diagrams are contained within pages 03 to 13, with each plan reflecting a particular aspect and/or providing context for the design.
- The alignment with the Mana Whenua Kaitiaki Forum pou outcomes is shown on pages 15 to 18, which also includes plans of the original Onehunga coastline.









**LEGEND**

*Organised sport facilities*

- [FB] Full size football field
- [FBY] Youth football field
- [FBJ] Junior football field
- [ ] Winter line marking (football)
- [ ] Future all-weather practice field provision
- [CR] Grass cricket wicket
- [ ] Summer line marking (cricket)
- [ ] Additional sports storage area
- [ ] Speedway track

*Informal recreation zones*

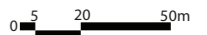
- [ ] Playspace location options
- [ ] Neilson Street entry plaza incorporating accessible controlled parking and drop-off during speedway events
- [ ] Informal, reflective areas
- [ ] Picnic / seating areas

*Buildings and structures*

- [ ] Existing buildings
- [ ] Potential new buildings
- [ ] Adaptive reuse of heritage buildings
- [ ] Potential new mixed-use buildings
- [ ] Transpower pylons
- [ ] Former grandstand footprint

**KEY**

- |   |   |
|---|---|
| <ul style="list-style-type: none"> <li>01. 3m wide east - west path connection</li> <li>02. 2m wide north - south path connection</li> <li>03. New speedway buildings</li> <li>04. New speedway spectator seating</li> <li>05. New multi-use buildings possibly incorporating speedway spectator seating, public toilet, change storage and indoor sport practice facilities</li> <li>06. New speedway pit area providing public car parking outside of speedway events</li> <li>07. Extend existing car park</li> <li>08. Expand existing toilet facilities to include changing facilities</li> <li>09. New off-street car park</li> <li>10. New Captain Springs Road footpath connection</li> </ul> | <ul style="list-style-type: none"> <li>11. Upgrade existing cricket nets</li> <li>12. Expanded car park including accessible parking</li> <li>13. New park storage building</li> <li>14. 2m wide walkway following approximate line of original Manukau Harbour coastline</li> <li>15. Areas for stormwater enhancement opportunities</li> <li>16. Daylighted puna / waterway</li> <li>17. Proposed controlled-access gate at cemetery entrance</li> <li>18. Proposed parking including accessible parking</li> <li>19. Proposed accessible cemetery parking</li> </ul> |
|---|---|





# TE MAHERE MATUA MŌ TE PAPA RĒHIA O WAIKARAKA WAIKARAKA PARK MASTERPLAN

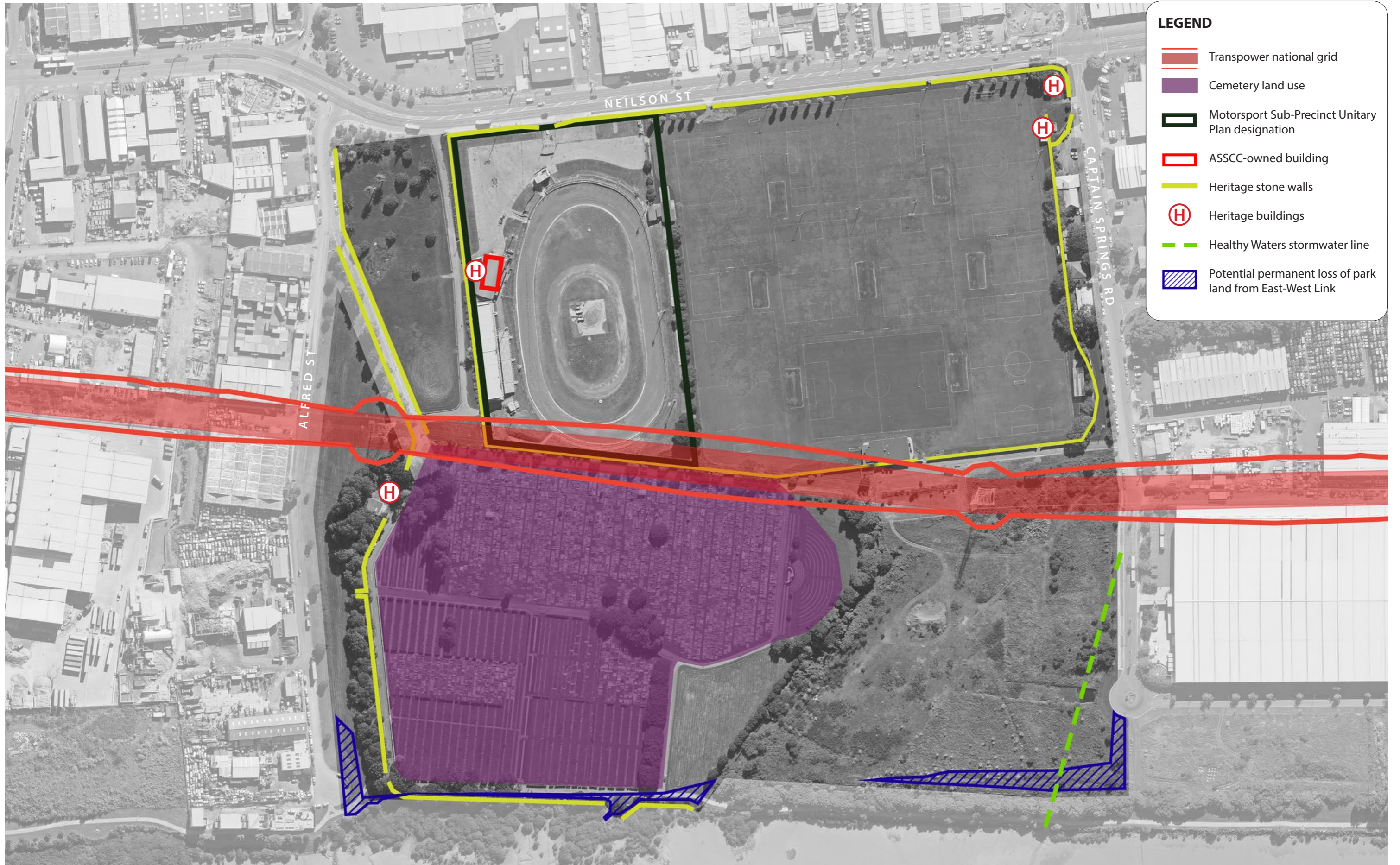
ONEHUNGA, AUCKLAND



HE HOAHOA MŌ TE MAHERE MATUA – MASTERPLAN DIAGRAMS

ADOPTED FEBRUARY 2021  
UPDATED JULY 2021 FOR PUBLICATION









**LEGEND**

- Primary pedestrian / cycle path (min. 3.0m wide)
- Secondary pedestrian path (typ. 2.0m wide)
- Original coastline path (typ. 2.0m wide)
- Minor cemetery path (<1.5m wide)
- Manukau Foreshore walkway / cycleway – alignment possibly subject to change as a result of the East West Link
- ▲ Potential future pedestrian and cycling connection to the East West Link







**LEGEND**

- Enhanced ecological corridors
- Daylighted piped puna / waterways
- Sustainable, water sensitive treatment of stormwater







**LEGEND**

- Maintain current football playing and training field provision**  
 6x full size fields (min. 90x60m)  
 2x youth fields (70x52m)  
 2x junior fields (40x30m)
- Provide future all-weather practice field provision**







**LEGEND**

- Maintain current 7x cricket playing fields (typ. 120m diameter)
- Upgrade existing cricket practice nets  
2x cricket practice nets (3.6x25m)
- New multi-use buildings possibly incorporating public toilet, change, storage, indoor sport practice facilities and speedway spectator seating





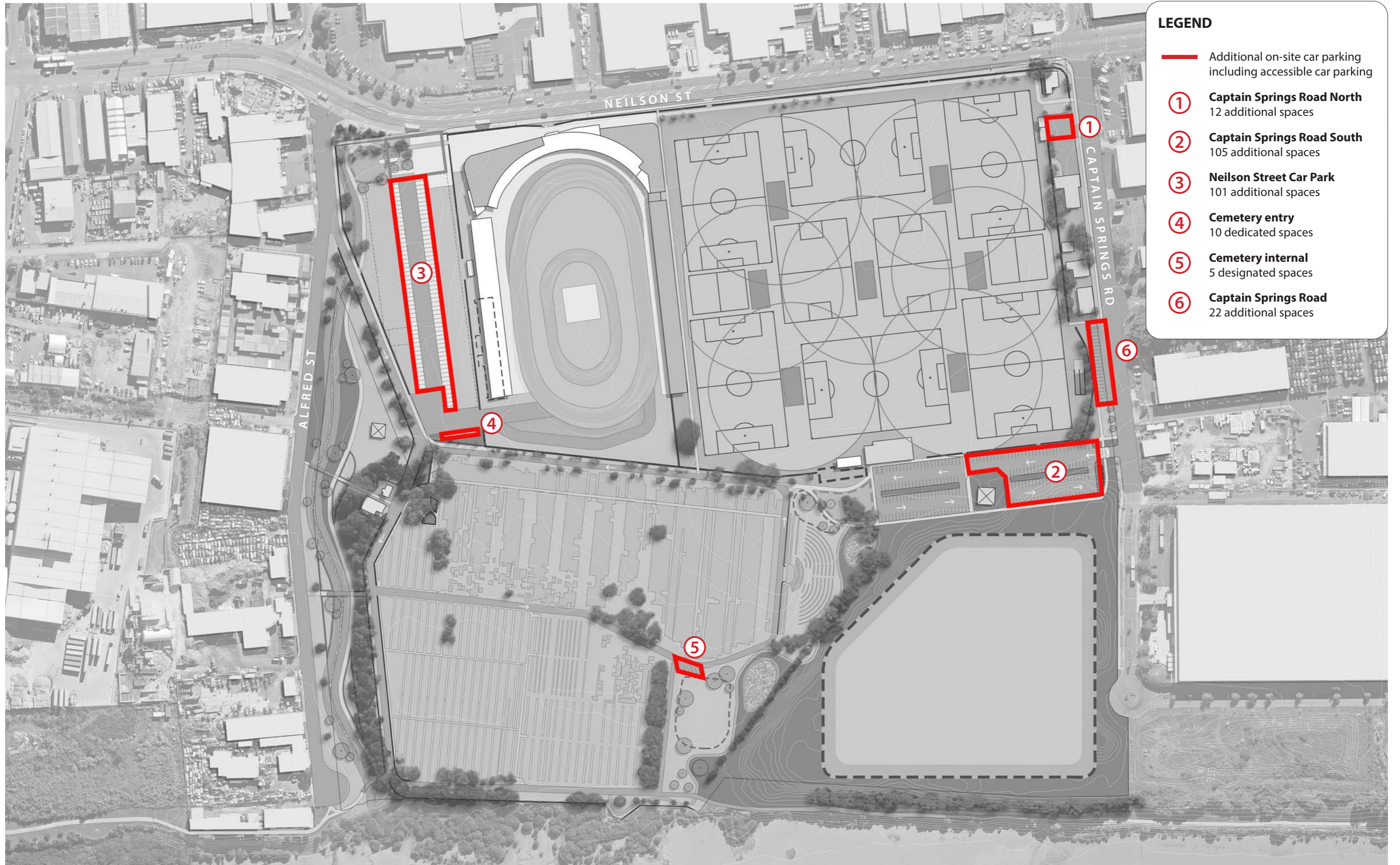


**LEGEND**

- Speedway track and grandstand spectator seating**
- Existing speedway track geometry retained
- Speedway pit area**





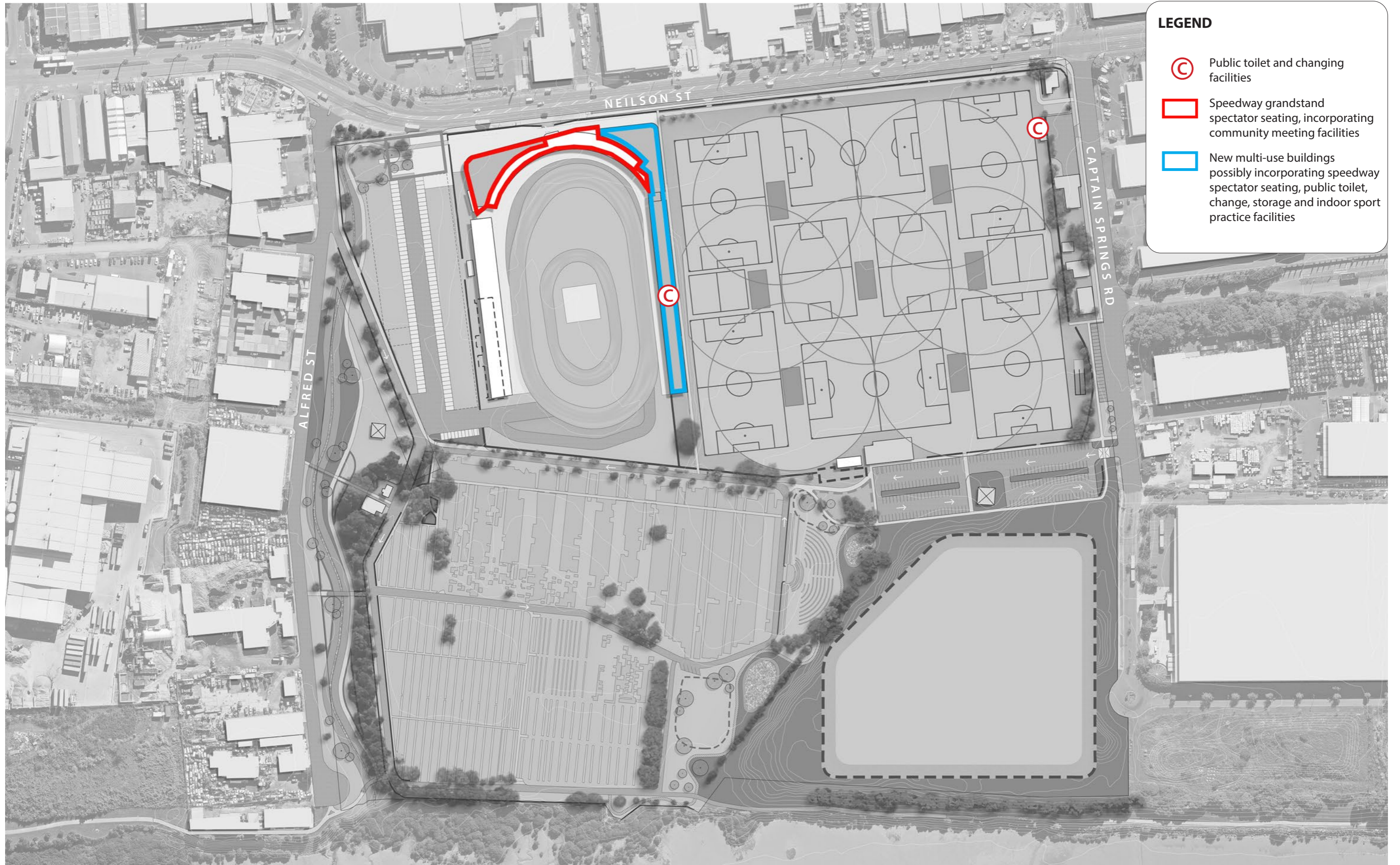


**LEGEND**




- Additional on-site car parking including accessible car parking
- ① **Captain Springs Road North**  
12 additional spaces
- ② **Captain Springs Road South**  
105 additional spaces
- ③ **Neilson Street Car Park**  
101 additional spaces
- ④ **Cemetery entry**  
10 dedicated spaces
- ⑤ **Cemetery internal**  
5 designated spaces
- ⑥ **Captain Springs Road**  
22 additional spaces





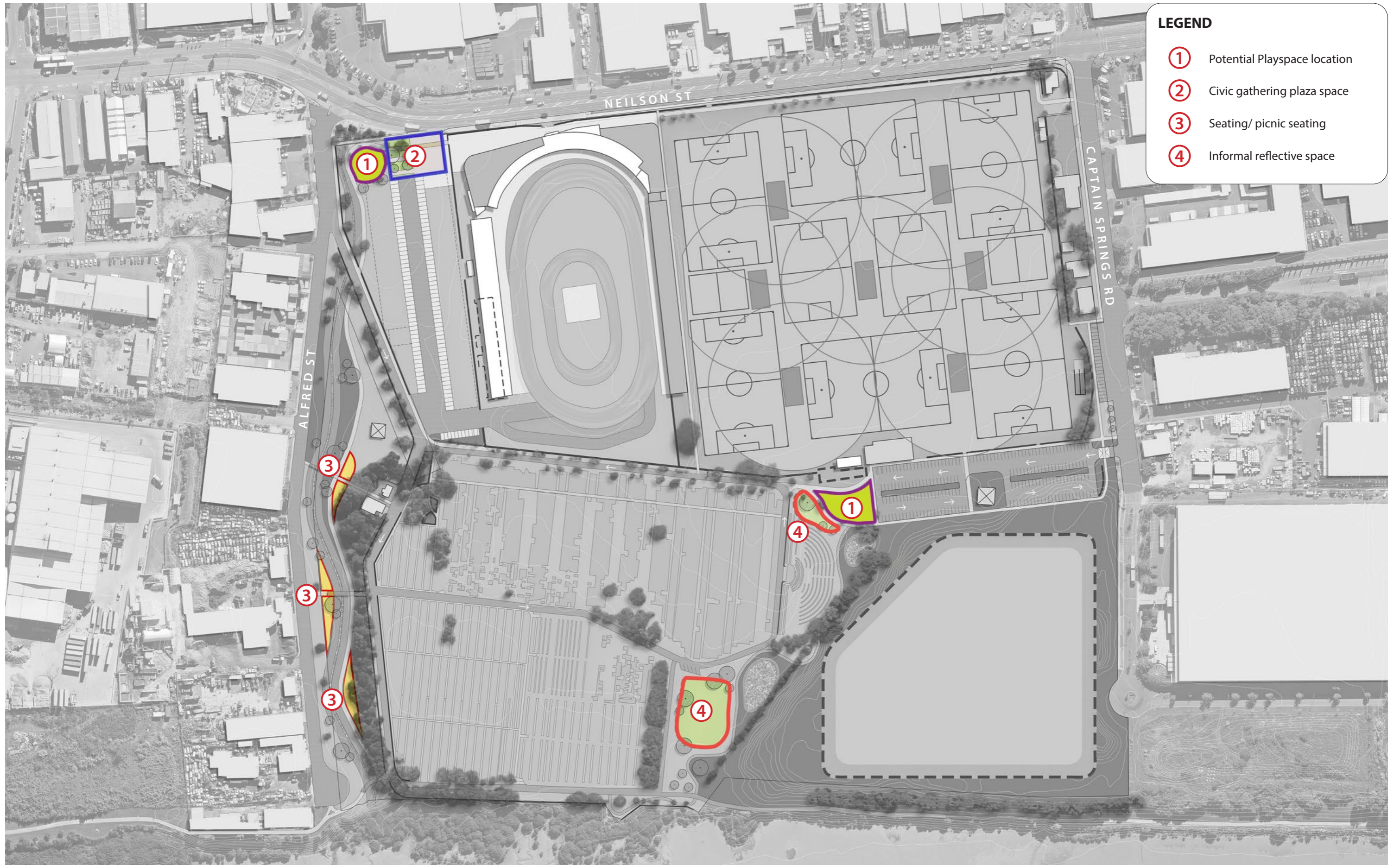


**LEGEND**

-  Public toilet and changing facilities
-  Speedway grandstand spectator seating, incorporating community meeting facilities
-  New multi-use buildings possibly incorporating speedway spectator seating, public toilet, change, storage and indoor sport practice facilities





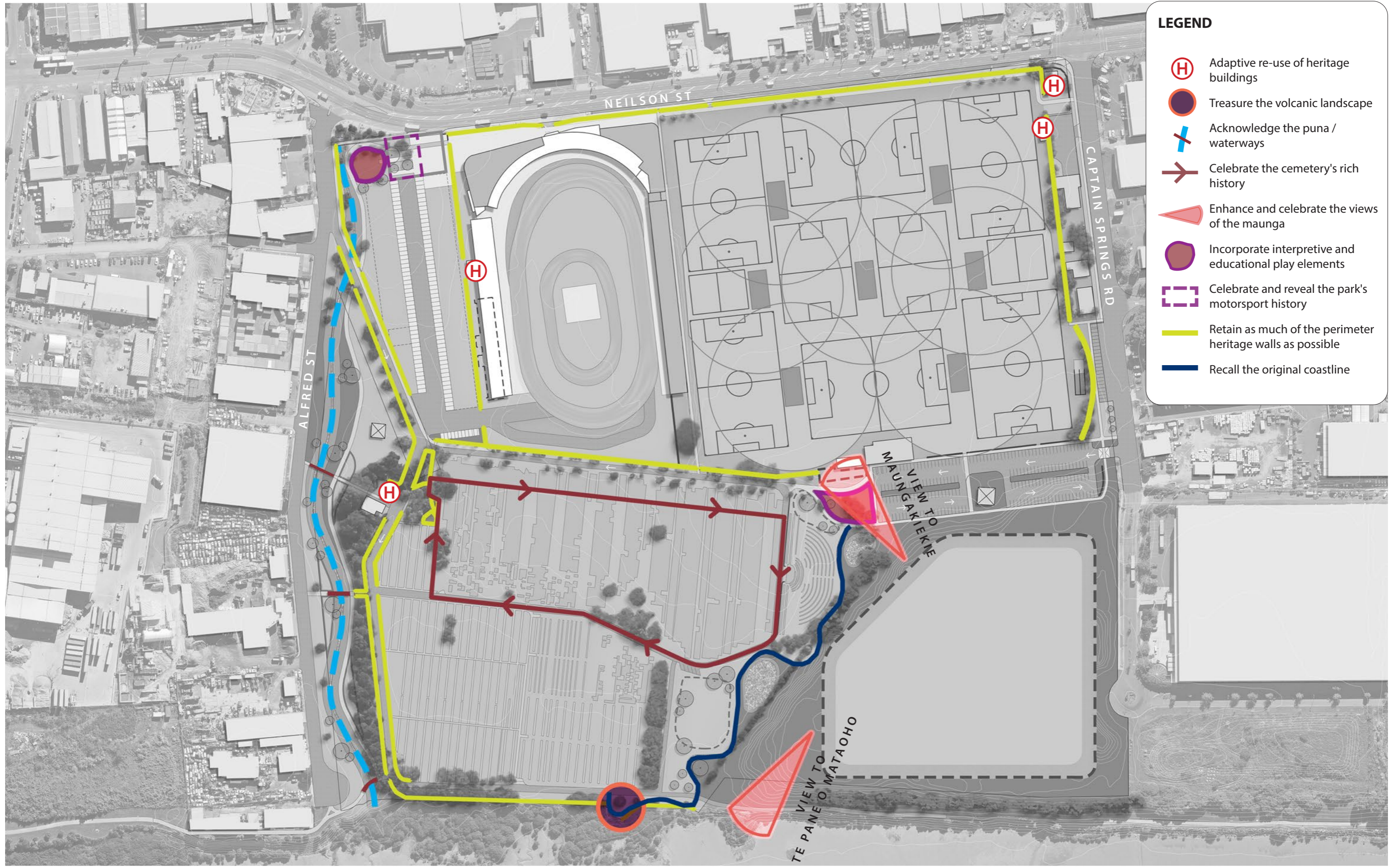


**LEGEND**

- ① Potential Playspace location
- ② Civic gathering plaza space
- ③ Seating/ picnic seating
- ④ Informal reflective space





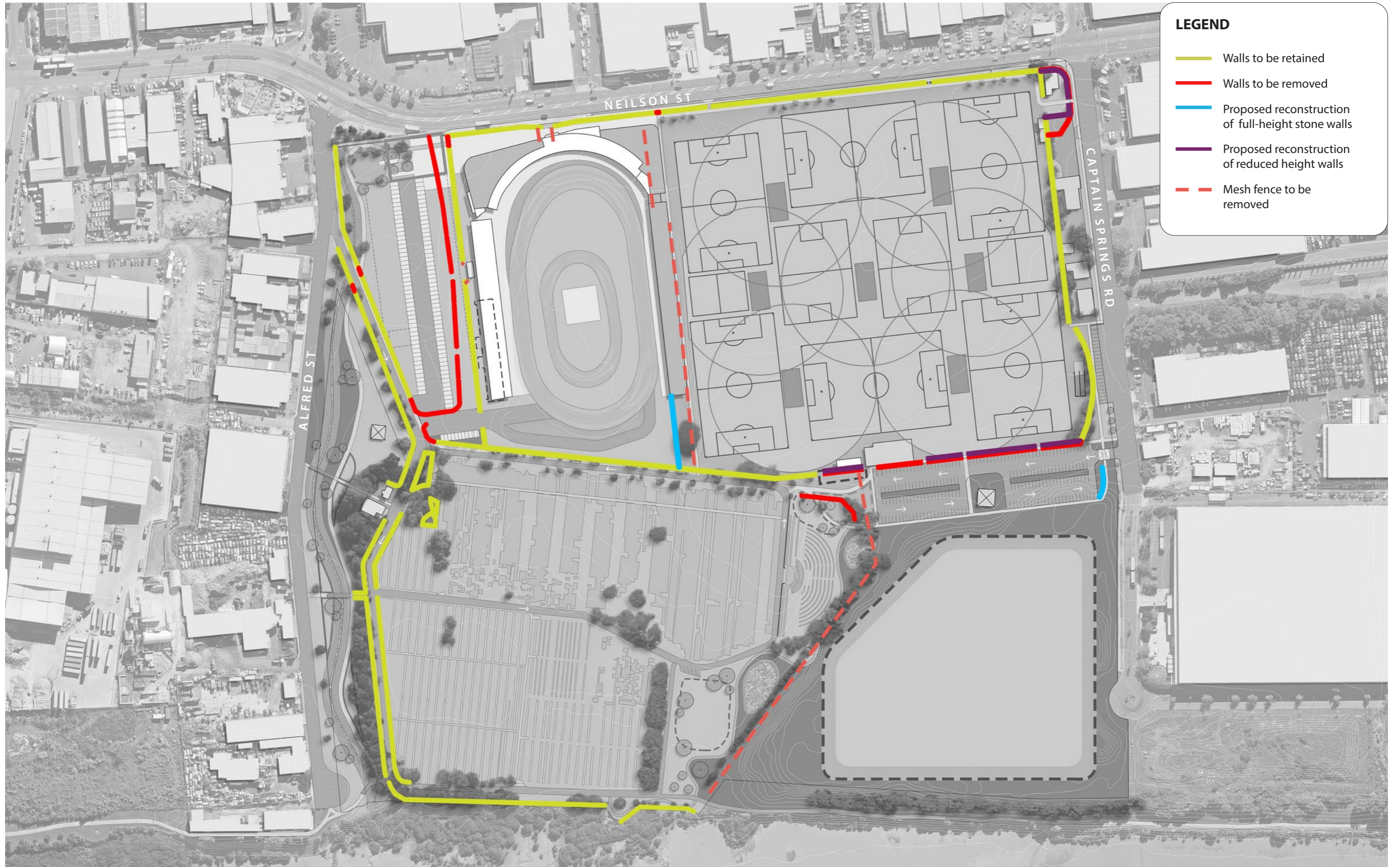


**LEGEND**

- H Adaptive re-use of heritage buildings
- Treasure the volcanic landscape
- Acknowledge the puna / waterways
- Celebrate the cemetery's rich history
- Enhance and celebrate the views of the maunga
- Incorporate interpretive and educational play elements
- Celebrate and reveal the park's motorsport history
- Retain as much of the perimeter heritage walls as possible
- Recall the original coastline







**LEGEND**

- Walls to be retained
- Walls to be removed
- Proposed reconstruction of full-height stone walls
- Proposed reconstruction of reduced height walls
- - Mesh fence to be removed





# TE MAHERE MATUA MŌ TE PAPA RĒHIA O WAIKARAKA WAIKARAKA PARK MASTERPLAN

ONEHUNGA, AUCKLAND



TE HĀNGAI O TE MAHERE MATUA MŌ TE PAPA RĒHIA O WAIKARAKA KI NGĀ HUA E HIAHIATIA ANA E TE RŌPŪ KAITIAKI MANA WHENUA  
WAIKARAKA PARK MASTERPLAN ALIGNMENT TO MANA WHENUA KAITIAKI FORUM POU OUTCOMES

ADOPTED FEBRUARY 2021  
UPDATED JULY 2021 FOR PUBLICATION



**TE HĀNGAI O TE MAHERE MATUA MŌ TE PAPA RĒHIA O WAIKARAKA KI NGĀ HUA E HIAHIATIA ANA E TE RŌPŪ KAITIAKI MANA WHENUA**  
**WAIKARAKA PARK MASTERPLAN ALIGNMENT TO THE MANA WHENUA KAITIAKI FORUM POU OUTCOMES**

Mana whenua have a strong and enduring relationship and connection to the whenua, being Papatūanuku. Mana whenua uphold their customary role and responsibility as kaitiaki to sustain, protect and enhance the te taiao taonga of the land, soil, water and air. Mana whenua manaaki and inform the Waikaraka Park project by providing their cultural knowledge to create restorative environments. This includes ecological enhancement allowing people and nature to restore balance and wellbeing. The impact of this will be seen in the wellbeing of people and the natural environment including the Manukau Harbour and local neighbourhoods.

Waikaraka Action	Outcome	Mana Whenua Kaitiaki Forum Pou Alignment	Mana Whenua Kaitiaki Forum Pou Outcomes	Te Aranga Principle <sup>i</sup>
Mana whenua partnering with council staff through plan creation process	The status of mana whenua is recognised and respected as a council partner	Governance	1.2 Mana whenua develop skills and knowledge to influence and participate in decision-making	Mana
		Culture and Identity	2.1.5 Visibility of mana whenua culture is improved through engagement of mana whenua endorsed technical experts (artists, designers, planners, etc)	
Opportunities for naming of park assets and proposed stream to reflect mana whenua involvement	The status of mana whenua is recognised and respected as a council partner	Culture and Identity	2.1 Mana whenua culture and identity is understood, respected, and visible 2.1.4 Where determined necessary by the Forum, mana whenua names are agreed and given to all new council facilities, public spaces, assets, etc	Mana
		Wellbeing	4.4 Mana whenua access appropriate wellbeing, healthcare and related support services and recreational activities	
Naming of the proposed daylighted waterway	Māori names are celebrated	Culture and Identity	2.1 Mana whenua culture and identity is understood, respected, and visible 2.3 Tāmaki Makaurau is a bilingual city 2.1.4 Where determined necessary by the Forum, mana whenua names are agreed and given to all new council facilities, public spaces, assets, etc	Whakapapa
		Wellbeing	4.4 Mana whenua access appropriate wellbeing, healthcare and related support services and recreational activities	
Signage to reflect correct names	People and places are connected through whakapapa	Wellbeing	4.4 Mana whenua access appropriate wellbeing, healthcare and related support services and recreational activities	Whakapapa
		Culture and Identity	2.1 Mana whenua culture and identity is understood, respected, and visible	
Acknowledge any ancestors in Waikaraka Cemetery	Remembrance, acknowledgement, respected, celebration and of our ancestors	Wellbeing	4.4 Mana whenua access appropriate wellbeing, healthcare and related support services and recreational activities	Whakapapa
		Culture and Identity	2.1 Mana whenua culture and identity is understood, respected, and visible	

<sup>i</sup> Te Aranga Design principles are outlined in the [Auckland Design Manual](#) and serve as a starting point for positive engagement with mana whenua (refer also to Section 4.0 of the Waikaraka Park Reserve Management Plan). Te Aranga Design principles have a general alignment with the Pou Outcomes as shown in the above table.



Waikaraka Action	Outcome	Mana Whenua Kaitiaki Forum Pou Alignment	Mana Whenua Kaitiaki Forum Pou Outcomes	Te Aranga Principle <sup>i</sup>
Highlighting the importance of the original coastline, including the headland <sup>ii</sup>	Improving the mauri of the Manukau Harbour by improving the receiving environment	Wellbeing	4.4 Mana whenua access appropriate wellbeing, healthcare and related support services and recreational activities	Tohu
		Natural Environment	3.2.2 Increasing number of initiatives developed which protect and improve the environment, improve air and water quality and reduce pollution	
		Culture and Identity	2.1 Mana whenua culture and identity is understood, respected, and visible	

<sup>ii</sup> Figure 01 below indicates the approximate location of the former coastline as interpreted from historical survey maps (including Figure 02) and aerial information.

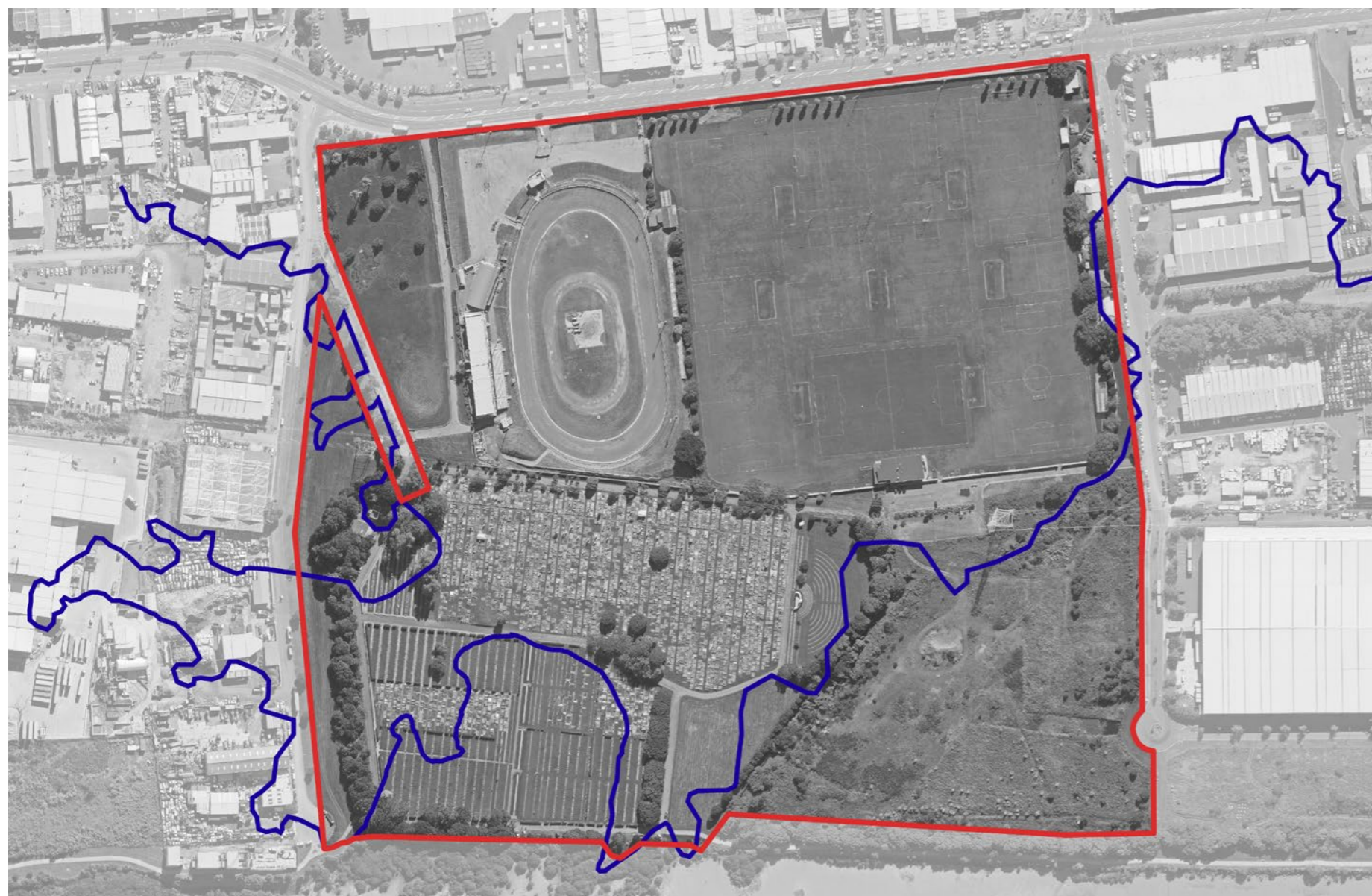


Figure 01 Tohu i te takutai i te tau 1907 – Indicative 1907 coastline

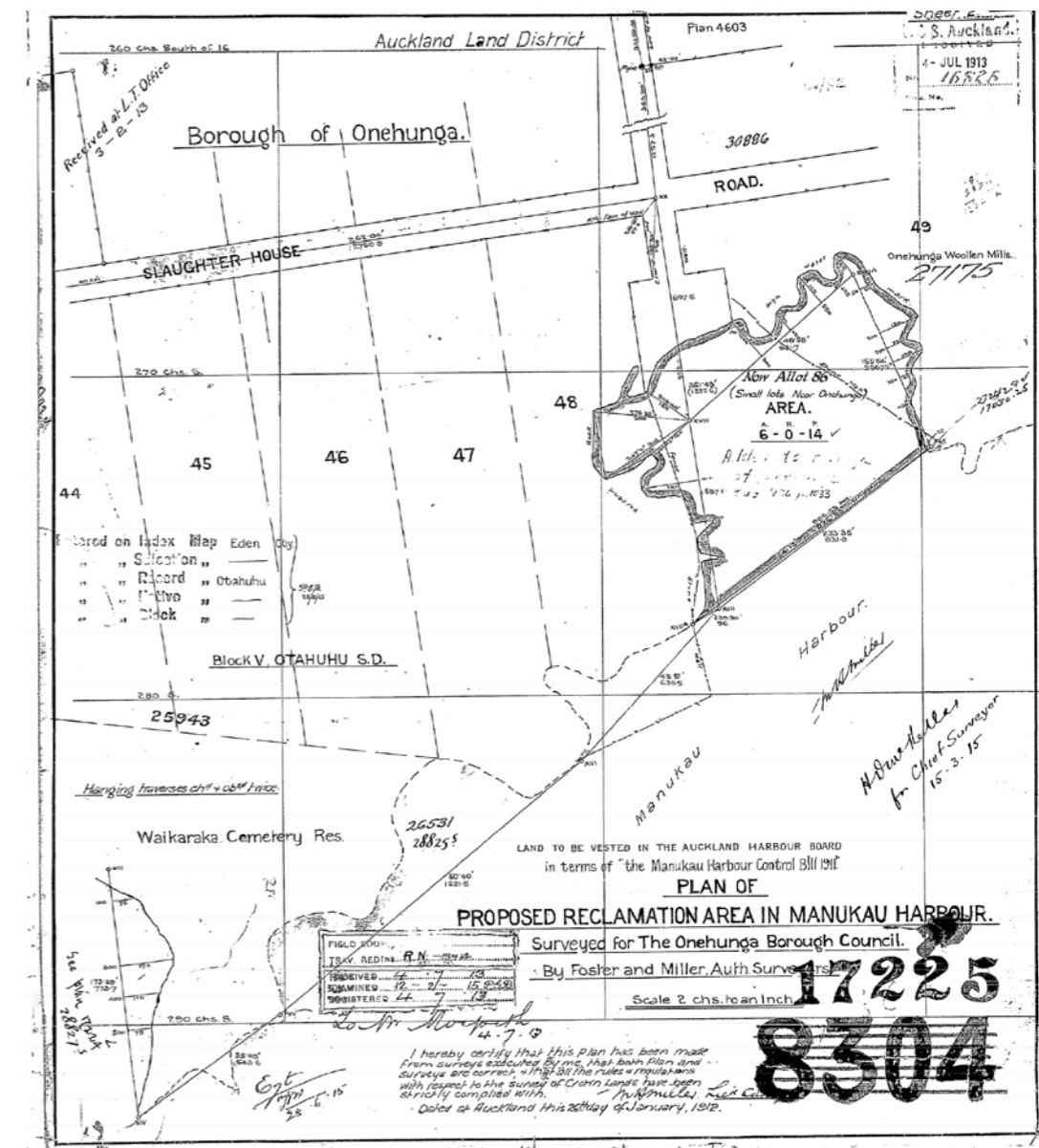


Figure 02 Survey Office (SO) 17223 cadastral map (1912)



Waikaraka Action	Outcome	Mana Whenua Kaitiaki Forum Pou Alignment	Mana Whenua Kaitiaki Forum Pou Outcomes	Te Aranga Principle <sup>i</sup>
Enhancing visual connections to the maunga	Provides for the connection between past and present of cultural landmarks	Wellbeing	4.4 Mana whenua access appropriate wellbeing, healthcare and related support services and recreational activities	Tohu
		Culture and Identity	2.1 Mana whenua culture and identity is understood, respected, and visible	
Signage and wayfinding	Use of mana whenua approved (traditional/original) names of significant sites and cultural landmarks are identified and visible Naming opportunity	Wellbeing	4.4 Mana whenua access appropriate wellbeing, healthcare and related support services and recreational activities	Tohu
		Culture and Identity	2.1 Mana whenua culture and identity is understood, respected, and visible 2.3 Tāmaki Makaurau is a bilingual city	
Any heritage trails to include iwi history, and whether any cemetery walks should include history of people buried there	Celebrating and acknowledging agreed cultural landmarks and cultural sites of significance	Wellbeing	4.4 Mana whenua access appropriate wellbeing, healthcare and related support services and recreational activities	Tohu
		Natural Environment	3.2 The mauri o te taiao, mauri o te wai and oranga o te hau is improved and enhanced 3.2.2 Increasing number of initiatives developed which protect and improve the environment, improve air and water quality and reduce pollution	
Protecting and enhancing native ecosystems	The natural environment is protected, restored and enhanced	Natural Environment	3.2 The mauri o te taiao, mauri o te wai and oranga o te hau is improved and enhanced 3.2.2 Increasing number of initiatives developed which protect and improve the environment, improve air and water quality and reduce pollution	Taiao
Better stormwater management	Stormwater management achieves above minimum standards	Natural Environment	3.2 The mauri o te taiao, mauri o te wai and oranga o te hau is improved and enhanced 3.2.2 Increasing number of initiatives developed which protect and improve the environment, improve air and water quality and reduce pollution	Taiao
Daylighting of waterway	The natural environment is protected, restored and enhanced	Natural Environment	3.2 The mauri o te taiao, mauri o te wai and oranga o te hau is improved and enhanced 3.2.2 Increasing number of initiatives developed which protect and improve the environment, improve air and water quality and reduce pollution	Taiao
Daylighting of waterway to improve water quality and management	Daylighting of stream by encouraging people to raise awareness and take responsibility for water quality and management	Wellbeing	4.4 Mana whenua access appropriate wellbeing, healthcare and related support services and recreational activities	Taiao
Ongoing work to improve water quality, leachate and managing the effects from the closed landfill and closed cemetery	Mitigate effects and manage any future risks associated with the closed landfill. Environmental health is managed, protected, maintained and/or enhanced	Natural Environment	3.2 The mauri o te taiao, mauri o te wai and oranga o te hau is improved and enhanced 3.2.2 Increasing number of initiatives developed which protect and improve the environment, improve air and water quality and reduce pollution	Mauri tu
Managing pest plants and animals to protect native species	Environmental health is protected, maintained and/or enhanced	Natural Environment	3.2 The mauri o te taiao, mauri o te wai and oranga o te hau is improved and enhanced	Mauri tu



Waikaraka Action	Outcome	Mana Whenua Kaitiaki Forum Pou Alignment	Mana Whenua Kaitiaki Forum Pou Outcomes	Te Aranga Principle <sup>i</sup>
Native planting is used for riparian margins	Native planting is used for riparian margins	Natural Environment	3.2 The mauri o te taiao, mauri o te wai and oranga o te hau is improved and enhanced 3.2.2 Increasing number of initiatives developed which protect and improve the environment, improve air and water quality and reduce pollution	
Predominant use of native planting in future	Guidance from mana whenua to restore the cultural and environmental landscape	Culture and Identity	2.1 Mana whenua culture and identity is understood, respected, and visible	Mauri tu
Opportunities to capture Māori narratives in new development, including interpretative information and signage (wayfinding), enhanced park entrance, pathways, etc.	Engagement with mana whenua to develop a visible cultural landscape	Wellbeing	4.4 Mana whenua access appropriate wellbeing, healthcare and related support services and recreational activities	Mahi toi
		Culture and Identity	2.1 Mana whenua culture and identity is understood, respected, and visible	
Provide opportunities to express manaaki	Mana whenua have a living and enduring presence and are secured and valued within their rohe	Wellbeing	4.4 Mana whenua access appropriate wellbeing, healthcare and related support services and recreational activities	Ahi ka
		Culture and Identity	2.1 Mana whenua culture and identity is understood, respected, and visible	
Hireable spaces available to use	Suitable spaces are available for mana whenua to participate and showcase in cultural practices and events	Culture and Identity	2.1 Mana whenua culture and identity is understood, respected, and visible 2.1.5 Visibility of mana whenua culture is improved through engagement of mana whenua endorsed technical experts (artists, designers, planners, etc)	
Māori design opportunities	Mana whenua narratives are captured and expressed creatively and appropriately through engagement with mana whenua	Wellbeing	4.4 Mana whenua access appropriate wellbeing, healthcare and related support services and recreational activities	Ahi ka
		Culture and Identity	2.1 Mana whenua culture and identity is understood, respected, and visible 2.1.5 Visibility of mana whenua culture is improved through engagement of mana whenua endorsed technical experts (artists, designers, planners, etc)	
Design and location of park buildings, infrastructure, pedestrian routes to be consistent with Crime Prevention Through Environmental Design Principles	Applying the environmental design principles and cultural design principles to achieve a safer environment	Culture and Identity	2.1 Mana whenua culture and identity is understood, respected, and visible 2.1.5 Visibility of mana whenua culture is improved through engagement of mana whenua endorsed technical experts (artists, designers, planners, etc)	
Council recognise Mana whenua sites of significance and observe cultural practices	Culturally sensitive areas in the park are identified by mana whenua and the correct tikanga is observed	Wellbeing	4.4 Mana whenua access appropriate wellbeing, healthcare and related support services and recreational activities	Tohu
		Culture and Identity	2.1 Mana whenua culture and identity is understood, respected, and visible	
Council identify economic opportunities for mana whenua	Mana whenua are provided opportunities to partner with Council	Economic	5.1.3 Increasing number of mana whenua-owned businesses contracted by council whanau from 2021 5.1.4 Increasing number of mana whenua-owned businesses from 2022	
		Wellbeing	4.3.1 Strategy to increase mana whenua employment opportunities and improve career pathways developed by 2022 4.3.2 Increasing number of mana whenua earning above the living wage from 2024	