

Ōrākei Urban Ngahere

Action Plan

September 2020





Contents

2	Introduction
10	The Whats, The Whys & The Whens
12	Tree Planting Principles
16	Partners
18	Goals
20	Objectives
24	Action Plans
30	References
32	Appendices

Introduction



Image 1: A rough day along the Tamaki Drive walk and cycleway

The Ōrākei Urban Ngahere Action Plan is a positive step towards seeking to recognise and replenish Auckland's urban forest. It is the result of determined advocacy of the Ōrākei Local Board, community groups and stakeholders.

We are proud to produce a localised urban ngahere action plan which is intended to deliver on Auckland Council's *Urban Ngahere (Forest) Strategy*¹. As a Board, we are also committed to enhancing the urban forest and biodiversity within our local board area.

We have developed the Ōrākei Local Board Urban Ngahere Action Plan to connect our parks and open spaces. We will also continue to explore planting opportunities through these corridors to increase biodiversity and will seek to encourage important community initiatives; such as native urban forest regeneration, pollinator paths and the planting of fruiting species. These planting opportunities can also complement the work being undertaken in association with the *Ōrākei Local Paths (Greenways) Programme Plan*².

The Ōrākei Local Board supported the development of a canopy analysis report to address the pressures on the urban forest and loss of tree cover, and to meet the

targets set in *Auckland's Urban Ngahere Strategy*¹.

This strategy has a stated target to increase Auckland's tree canopy cover from a regional estimate of 18% (as assessed in 2013) to 30% by 2050. In addition, the strategy also states an aim of having at least 15% tree canopy cover in every local board area within this timeframe. Given the above, it is clear that a coordinated approach to achieving the targets for both local board areas and region-wide is necessary.

With the extent of the urban forest in the Ōrākei Local Board area having now been assessed, we understand the need for a large number of planting projects to be committed to in the short and medium term as this will ensure that a flourishing urban forest can continue to develop into the future. Extensive national and international urban forest studies are in unison when extolling the benefits that the "lungs of a city" can bring to its inhabitants.

There are numerous benefits associated with having, developing and maintaining a flourishing urban forest.

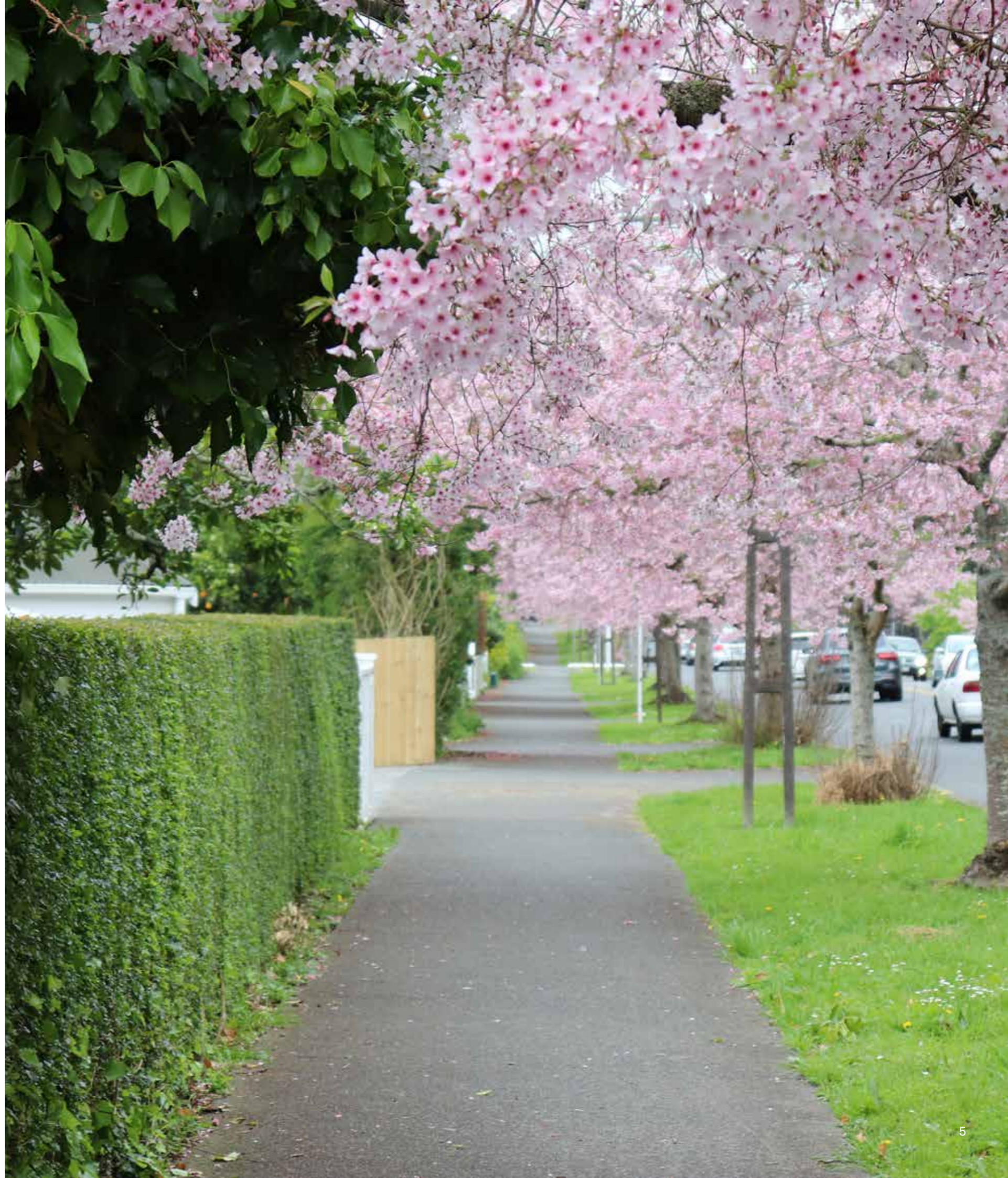
The *Auckland's Urban Forest Canopy Cover: State and Change (2013 – 2016/2018)* report states that the Ōrākei Local Board area has 20% canopy cover³; 5% above the desired minimum local board target detailed in *Auckland's Urban Ngahere (Forest) Strategy*¹ – please refer to the 'Ōrākei Local Board – Urban Tree Map' LiDAR map in the appendices of this report and Map 1 below.

With a significant percentage of the local board area's 'suburban' urban forest assessed as growing on private land (which is subject to little, if any, tree protection legislation, by-laws or policies), it is reasonable to assume that, since the data was last captured and with no coordinated tree planting plan in place, urban forest canopy coverage within the Ōrākei Local Board area will have declined.

Given the array of influences that can impact on our local natural environment, commitment to a well-considered tree planting action plan is required. For the betterment of our collective urban forest, the local board is pleased to make such a commitment.

A coordinated action plan, along with an effective long-term maintenance regime and well considered tree protection legislation, by-laws or policies will go a long way towards protecting, enhancing and maintaining a vibrant and essential urban forest within the Ōrākei Local Board area.

Ōrākei Local Board



Map 1: Canopy cover percentage by suburb (based on 2013 LiDAR)

Ngā painga o te ngahere ā-tāone o Tāmaki Makaurau

Benefits of Auckland's urban ngahere



Urban Forest Strategy

Objectives



Growing

Auckland needs to grow its urban ngahere to increase and amplify the benefits trees provide, along with addressing distributional inequity. By expanding and enriching its urban ngahere, Auckland will maximise the social, environmental, economic and cultural benefits that trees, shrubs and other vegetation bring to an urban environment.



Protecting

Protecting existing urban ngahere is crucial to safeguarding the added values and benefits larger mature trees provide. Caring for saplings is critical for ensuring older trees are replenished before the end of their life, ensures our urban ngahere grows over time and publicly-funded planting is successful.

Mechanisms



Engage

Engage with partners and stakeholders – with mana whenua, residents, private landowners, community organisations, network utility operators and the private sector to ensure the urban ngahere is well managed, its benefits are well recognised and that growing and protecting the urban ngahere on public and private land is widely supported.



Manage

Manage the city's urban ngahere on public land through coordinated planning, strategic planting and smart, innovative urban design while facilitating best practice standards for work on and around trees through vegetation maintenance contracts.



The Whats, The Whys & The Whens

What is an urban ngahere action plan?

Why is an urban ngahere action plan needed?

When does an urban ngahere action plan get implemented?

This section provides details and answers to the 'whats', the 'whys' and the 'whens' of an effective urban ngahere action plan.

The What

This urban ngahere action plan:

- Is a road map that spells out what steps are required in order to achieve the stated goals of the Ōrākei Local Board as they relate to the urban forest within the local board area boundaries.
- Details objectives and actions that support the Ōrākei Local Board's urban forest protection, development and maintenance goals.

The Why

This urban ngahere action plan:

- Is needed as currently there is no coherent tree planting plan to support the promotion, protection and enhancement of the urban forest within the boundaries of the local board area.
- Is required as a recent high level assessment has identified tree canopy cover loss throughout the local board area.
- Is necessary as a high level assessment of the current tree stock within the local board boundaries revealed vulnerabilities in the age spread, condition, species range and longevity of the existing tree canopy cover.

The When

This urban ngahere action plan:

- Outlines the requirements necessary to undertake to develop a ten year tree planting plan.
- Provides timeframes per key actions that support the goals and objectives of the Ōrākei Urban Ngahere Action Plan.

Tree Planting Principles



With the northern aspect of the Ōrākei Local Board area being constrained by a coastline, the presence of the motorway to the southwest and the suburbs containing intensive residential lots; a range of planting principles are required in order to establish new plantings that contribute long term to the board's overall urban forest canopy cover.

Examples of relevant tree planting principles are: planting the right tree in the right place; having a preference for native species; ensuring urban forest diversity; creating ecological corridors and connections; and seeking to manage the whole lifecycle of urban trees.

Tree planting principles are to be developed in a manner that address a range of issues (some being specific to the Ōrākei Local Board area) such as:

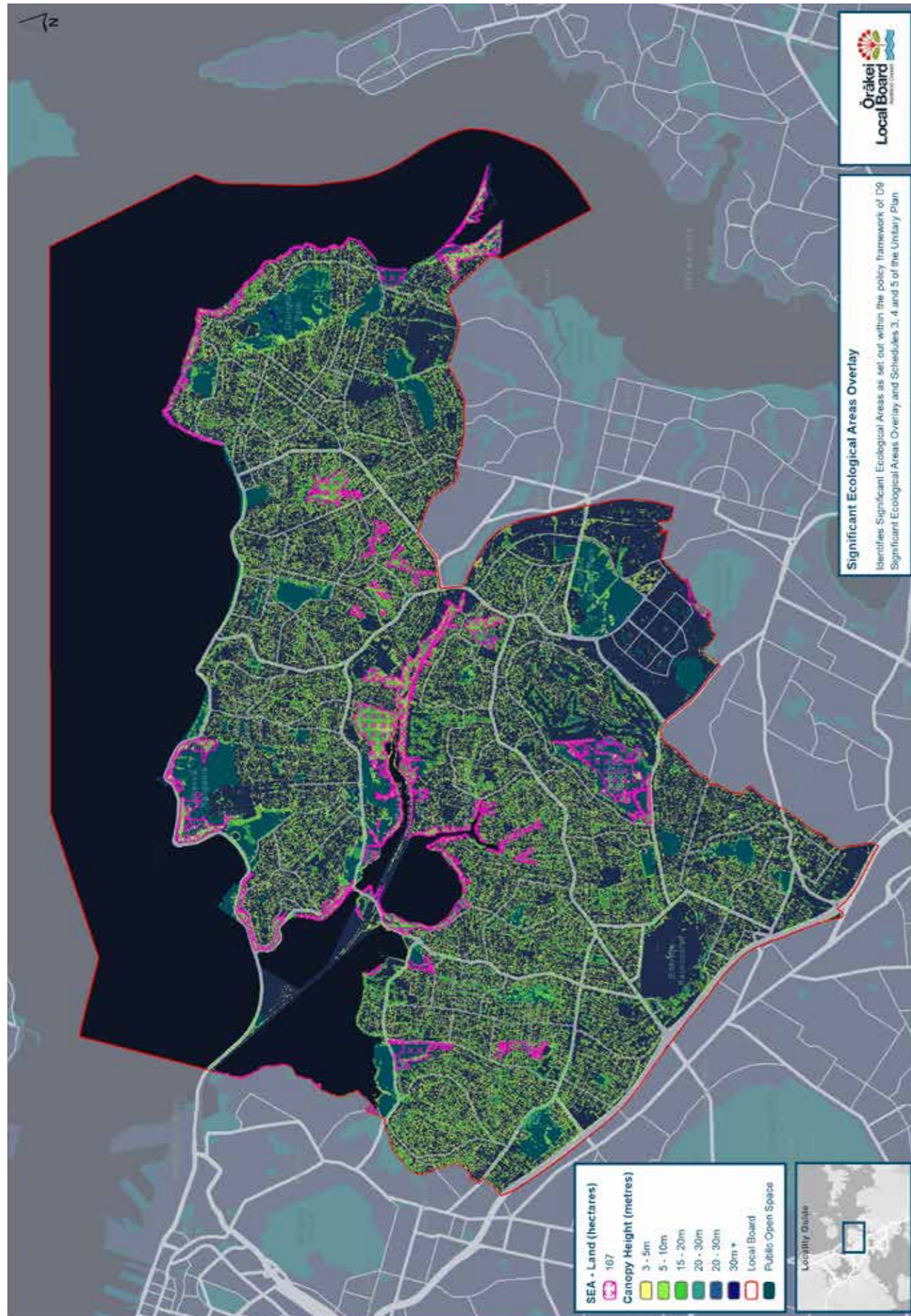
- Salt tolerance
- Soil type
- Structural form
- Plant large where we can
- Heritage context
- Climate change species susceptibility/effects resilience
- Availability of space above and below ground
- Shading
- Leaf drop
- Future sight and view lines
- Visual amenity
- Infrastructure conflict
- Private property planting opportunities/assistance
- Pest and disease resistance
- Maintenance requirements
- Increasing biodiversity
- Bird and wildlife corridor creation/enhancement/linkages
- Have a well-proportioned mix of saplings, semi mature and mature trees across the area
- A species composition of at least 70% native species, no more than 10% exotic species, 10% fruit-producing species and 10% of species with functional uses (i.e. carbon sequestrers)

When addressing species selection, the tree planting principles are to be supported by the Auckland Council *Indigenous Terrestrial and Wetland Ecosystems of Auckland* (published 2017) report⁴. This document identifies species that are part of the various terrestrial and wetland ecosystems (and their variants) that have been located through Auckland boundaries.

In addition, it is important to consider the extension, and/or creation of pollinator paths to help create corridors for birds, and insects to move along. Selecting tree varieties that provide flower sources for birds and insects are important to help build pathways for movement and to build the extent of habitat to support increased biodiversity at a local street and park scale.

Consideration is to be given to large trees that provide a diverse food source and habitat for native birds, as well as the maintenance of tall tree stumps that could provide nesting opportunities for birds.

Where appropriate, adopting the strategic principle of 'native first' when seeking to plant with appropriate species in ecologically relevant locations will assist in the enhancement of biological diversity, as well as aiding in ecological restoration.



Map 2: SEA and urban forest cover (based on 2013 LiDAR)

In addition, consideration relating to the effectiveness of individual species to remove carbon dioxide from the atmosphere and store it as carbon as part of their overall biomass over their lifetime is considered to be an important tree planting principle.

Planting platforms and opportunities can be found in the body of this report, for example:

- High level 'Suburb By Suburb Planting Opportunities'
- Survey Map; SEA and urban forest cover (based on the 2013 LiDAR)

When it comes to identifying planting locations and options, there are a wide range of opportunities to consider:

- Auckland Council sports fields, parks and reserves (i.e. Glover Park; the slopes have scattered trees and few trees providing shade over the playground)
- Auckland Transport land (i.e. grass berms, footpath tree pits, kerb build-outs, car parking spaces, new street gardens)
- Public cemeteries (note that some countries are now using trees as 'headstones')

- Government land (i.e. schools, hospitals, fallow sites)
- NZTA land
- Large planters along cycle lanes
- Future open space programmes and projects
- Green walls (i.e. amenity plantings that can be installed in planters/on fencing/on wires attached to sides of public/commercial buildings)

Where possible, consideration of planting large grade specimens helps ensure we get 'larger trees faster' so as to give rise to the urban forest benefits sooner.

Planting with a variety of species is particularly important when addressing resilience issues such as pest and disease, and climate change species vulnerabilities; a small species range could get decimated by a pest and/or disease infestation (i.e. Dutch Elm Disease and Kauri Dieback), just as a cooler, dryer climate-loving species may well suffer in the predicted warmer and more moist seasons that Auckland is likely to face in the future.

We will work with the community, Auckland Council, Ministry for Primary Industries and iwi to isolate incidents, prevent further spread of pest trees, educate and plant a diversity of tree species that are resilient to current disease to ensure the survival of our urban forest.

Of equal importance is ensuring that we address 'Seed to Succession' issues, with a focus on 'end of useful life' timing (as Kew Gardens in the UK found out in the 1987 storm, when they lost a large number of over-mature specimens and did not have sufficient middle age trees to carry them through), as well as providing bird and wildlife corridor creation and enhancement, along with linking Significant Ecological Areas (SEAs).

It is the combination of the above points that will ensure that, by introducing and maintaining a wide range of tree species, sizes and ages, a future healthy, vibrant and benefit-producing urban forest will be present for many years to come.

As stated in *Auckland's Urban Ngahere (Forest) Strategy*¹ – 'Together, growing Auckland's urban ngahere for a flourishing future.'

Partners

The results of this urban ngahere action plan will benefit not only the residents of the Ōrākei Local Board area but also the wider city community as a whole. Given this fact and the very relatable nature of planting a tree, creation of a viable and sustainable network of partners who can provide support in a myriad of ways is deemed important; so much so that it is listed as one of the goals of this plan.

Examples of those entities who could partner in the deliverables of this plan are:

- Ōrākei Community Association
- St Heliers/Glendowie Residents Association Inc.
- Meadowbank and St Johns Residents Association
- Ngāti Whātua Ōrākei
- Friends of St Johns Bush
- Friends of Churchill Park
- Friends of Tahuna Torea
- Other community volunteer groups
- Local school/community groups to operate eco-sourced nurseries
- Private land owners (possible for Auckland Council to fund the planting of trees on private properties)
- Commercial land owners (possible to install climbing green walls on/up sides of privately-owned buildings where trees can't be established)
- Auckland Council's Community Facilities department (by engaging with and supporting the renewals programme, create new planting locations by undertaking the removal of noxious trees/plants)
- Auckland Transport (engage with the maintenance programme i.e. retire hard stands to create new planting spaces)
- Healthy Waters (engage with the revegetation program, assist in the creation of educational rain gardens)
- Network Utility Operators (engage regarding planting location restrictions around network assets, support Vector's Overhead Improvement Program)
- Work with Panuku and Auckland Regional Facilities to develop and incorporate new planting opportunities within their new development and facility maintenance projects
- National environmental entities (Forest and Bird, Project Crimson, Trees That Count)
- Nursery Association (gain support by way of quality production donation/ price reduction)
- Government departments (opportunity to plant large trees for shading benefits in schools and hospitals, support from Department of Corrections to grow seedlings)
- NZTA (discuss species used in motorway plantings and their future long term protection and explore planting opportunities on surplus land)



Goals

Knowing, Growing, Protecting.

The goals of the Ōrākei Local Board in relation to the assessment, protection, management and development of the urban forest within the Ōrākei Local Board area are as follows:

- To create sustainable urban forest within the Ōrākei Local Board area that meets the needs of our community and surroundings
- To increase public awareness around the need to promote, protect and enhance the urban forest within the Ōrākei Local Board area
- To achieve 5% increase of tree canopy cover within the Ōrākei Local Board area boundaries by 2030
- To create a network of partners to support the development and maintenance of the urban forest within the Ōrākei Local Board area
- To achieve 30% increase of tree canopy cover within the Ōrākei Local Board area boundaries by 2050

FOR BOARD DISCUSSION



Objectives



Knowing, Growing, Protecting.

In order to achieve the Ōrākei Local Board's goals in relation to the assessment, protection, management and development of the urban forest within the Ōrākei Local Board area, the following objectives are required to be undertaken:

- Research and compile a list of planting opportunities within the road reserve, parks and reserves, and commercial environments within the Ōrākei Local Board area
- Develop a suitable species list of small, medium and large trees to be used in the identified list of planting opportunities
- Develop a urban forest tree planting promotional program that engages stakeholders and partners
- Review and set up an accurate tracking system of Auckland Council's tree planting and maintenance practices
- Auckland Council Call Centre can be contacted on 09 301 0101 or via the council website www.aucklandcouncil.govt.nz. They can log maintenance requests to attend to newly planted trees, to review a site for a replacement tree planting, and to request that a new tree is planted
- Develop a 10 Year Tree Planting Plan (supported by a suitable funding framework)
- Engage with tree nursery suppliers and develop a nursery 'Growing Plan' that will service the 10 Year Tree Planting Plan
- Provide a report to the local board that outlines the financial requirements to support the funding commitments of the 10 Year Tree Planting Plan
- Continue discussions with Auckland Council regarding current levels of tree protection rules and their effectiveness as they relate to the protection and enhancement of the urban forest
- Council's Governing Body has commenced discussions with Central Government to highlight the need for change to the Resource Management Act to enable new or better rules to protect large trees of importance in Auckland
- Work with Auckland Council and the Ōrākei Local Board to collaboratively explore the development of an advisory service for tree care to help provide advice to customers on tree care and maintenance. Promote the value of professional tree care and work with national organisation to develop advisory service

By implementing these objectives, and in line with the stated goals, this urban ngahere action plan intends to ensure that:

- We engage with all stakeholders, partners, schools & local community groups so as to seek support regarding the planting & maintenance of future urban forest plantings
- The right trees will be planted in the right places
- The tree supply and planting works will be cost effective
- We arrange annual tree planting events
- We explore the options for setting up a tree fund to help with maintenance of large notable trees in the local board area



Action Plans

Introduction

Tree planting 'Action Plans' will be developed in order to deliver on the planting aspirations of the Ōrākei Local Board. This will involve site-specific assessments and consultation with regard to planting opportunities that exist within the board's boundaries. New tree planting will assist with the local board's efforts on adaptation and mitigation measures to help respond to climate change by positively leveraging efforts to "become a low carbon community" and implement the Action Plan.

To undertake the required activities that support the delivery of the Action Plans, the following matters will be considered and implemented:

Action

- Undertake a detailed assessment of planting opportunities within the road reserves, parks and reserves, and commercial environments in order to continue the greening of the Ōrākei Local Board area
- In accordance with the principles outlined in *Auckland's Urban Ngahere (Forest) Strategy*¹, research and compile a 'suitable species list' and 'tree planting principles' that will apply to all identified planting opportunities
- Develop a detailed 'Planting Opportunities List' that will help to deliver the goal of providing 30 per cent of tree canopy cover within the Ōrākei Local Board area by 2050
- Develop a 1 - 3, a 4 - 6 and a 7 - 10 Year Funding Framework to deliver on the 'Planting Opportunities List'
- Record metrics that reflect estimated tree canopy cover percentage increase across the local board area post completion of all identified planting opportunities, as well as the estimated growth of existing trees up to 2050



Education

- Research, engage and enrol tree nursery suppliers regarding tree stock production standards, current stock availability and species selection for future plantings
- Undertake an assessment regarding the necessity for effective tree protection to support the long term protection, management and development of the urban forest
- Develop a promotional program that engages with identified stakeholders, partners and the wider public

Planting

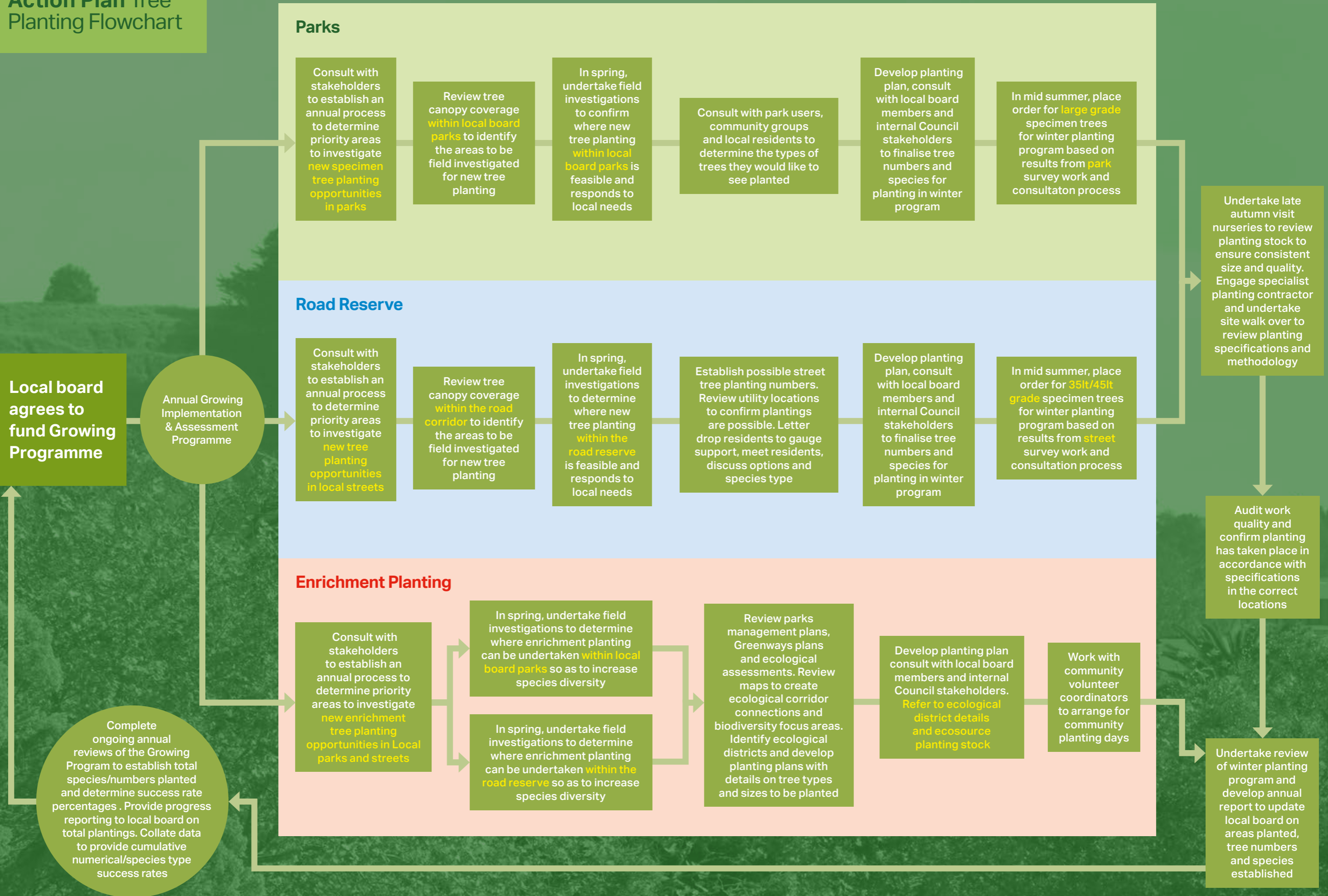
- Compile indicative tree supply and planting pricing (that includes 3 years post-planting maintenance, metrics assessments and reporting) to deliver on the 'Planting Opportunities List'
- Consider planting opportunities that include tree species that provide flowers, nectar and fruit to help support biodiversity
- Discuss and confirm best practice tree planting and ongoing maintenance methods with Auckland Council's Community Facilities department

Community Support

- Confirm with the Ōrākei Local Board a funding commitment for the 10 Year Tree Planting Plan and the 10 Year Funding Framework
- Immediately post adoption of the Action Plan, implement Year 1 of the 10 Year Tree Planting Plan
- Encourage and support volunteers in the community to be enabled to support the growth of the urban forest, working with contractors and local volunteer groups to deliver outcomes, e.g. through community grants
- Investigate opportunity to establish an annual resident scheme which would allow residents to nominate heritage and notable trees in the local board area
- Investigate opportunity to establish a contestable fund that would support private property owners to maintain large heritage and notable trees in their private property, enhancing bio- diversity in the local board area
- Investigate opportunities to establish an initiative that would provide the local board with a platform to acknowledge individuals for their contributions to making reserves and private properties pest plant free



Action Plan Tree Planting Flowchart



References



Image 2: A local park

1. Auckland Council Research and Evaluation Unit. (2019, March). *Auckland's Urban Ngahere (Forest) Strategy*. <https://www.aucklandcouncil.govt.nz/plans-projects-policies-reports-bylaws/our-plans-strategies/topic-based-plansstrategies/environmental-plans-strategies/documents/urban-ngahere-forest-strategy.pdf>
2. Auckland Council. (2016). *Ōrākei Local Paths (Greenways) Programme Plan*. <https://www.aucklandcouncil.govt.nz/about-auckland-council/how-auckland-council-works/local-boards/all-local-boards/orakei-local-board/Documents/orakei-local-path-programme-plan-2016.pdf>
3. Golubiewski, N., Lawrence, G., Zhao, J., & Bishop, C. (2020). *Auckland's Urban Forest Canopy Cover: State and Change (2013-2016/2018)*. <https://www.knowledgeauckland.org.nz/publications/auckland-s-urban-forest-canopy-cover-state-and-change-2013-20162018/>
4. Singers, N. J., Osborne, B., Lovegrove, T., Jamieson, A., Boow, J., Sawyer, J. W. D., & Webb, C. (2017). *Indigenous terrestrial and wetland ecosystems of Auckland*. Auckland Council, Te Kaunihera o Tāmaki Makaurau.

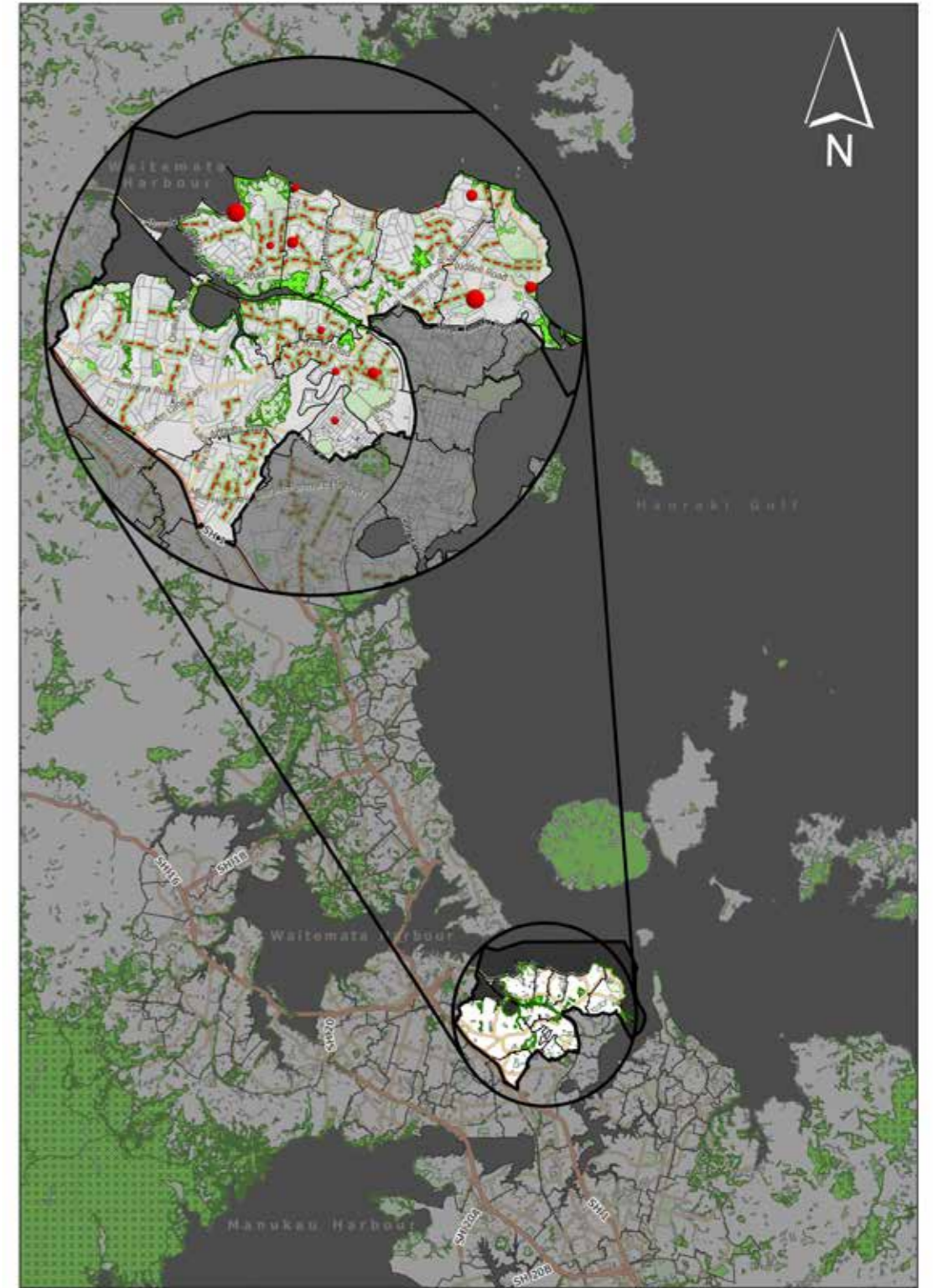
Auckland Council. (2017). *Ōrākei Local Board Plan 2017*. <https://www.aucklandcouncil.govt.nz/about-auckland-council/how-auckland-council-works/local-boards/all-local-boards/orakei-local-board/Documents/orakei-local-board-plan-2017.pdf>

Auckland Council. (2019). *Local Development Initiative - Ngahere Work Programme. Year 1: Knowing Phase. Urban Ngahere (Forest) Analysis Report September 2019*.

Wilcox, M. D. (2012). *Auckland's Remarkable Urban Forest*. Auckland Botanical Society.

Appendices

Potential Tree Planting Opportunities



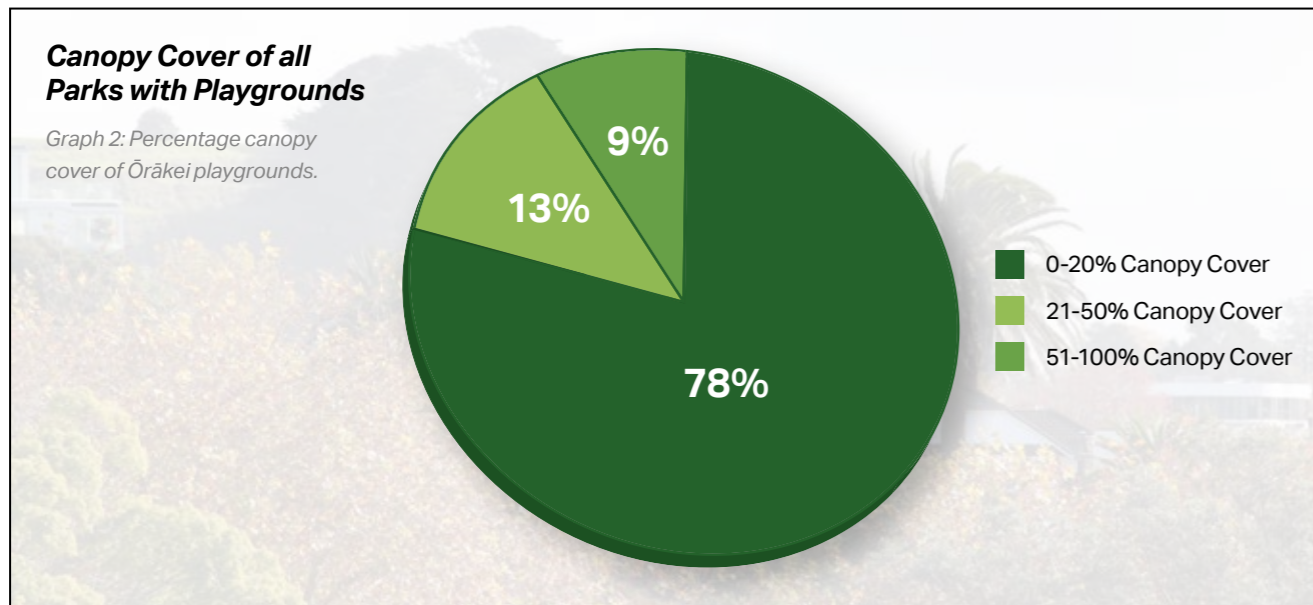
Map 3: Ōrākei Local Board area

Surveying and Data Collection

There are limitations with the data collected for potential planting opportunities. Upon review of the canopy analysis report³, a high level assessment within the Ōrākei Local Board area was undertaken within the road reserve and within parks that have playgrounds; shade over these structures was the motivating factor regarding which parks were assessed for potential planting opportunities.

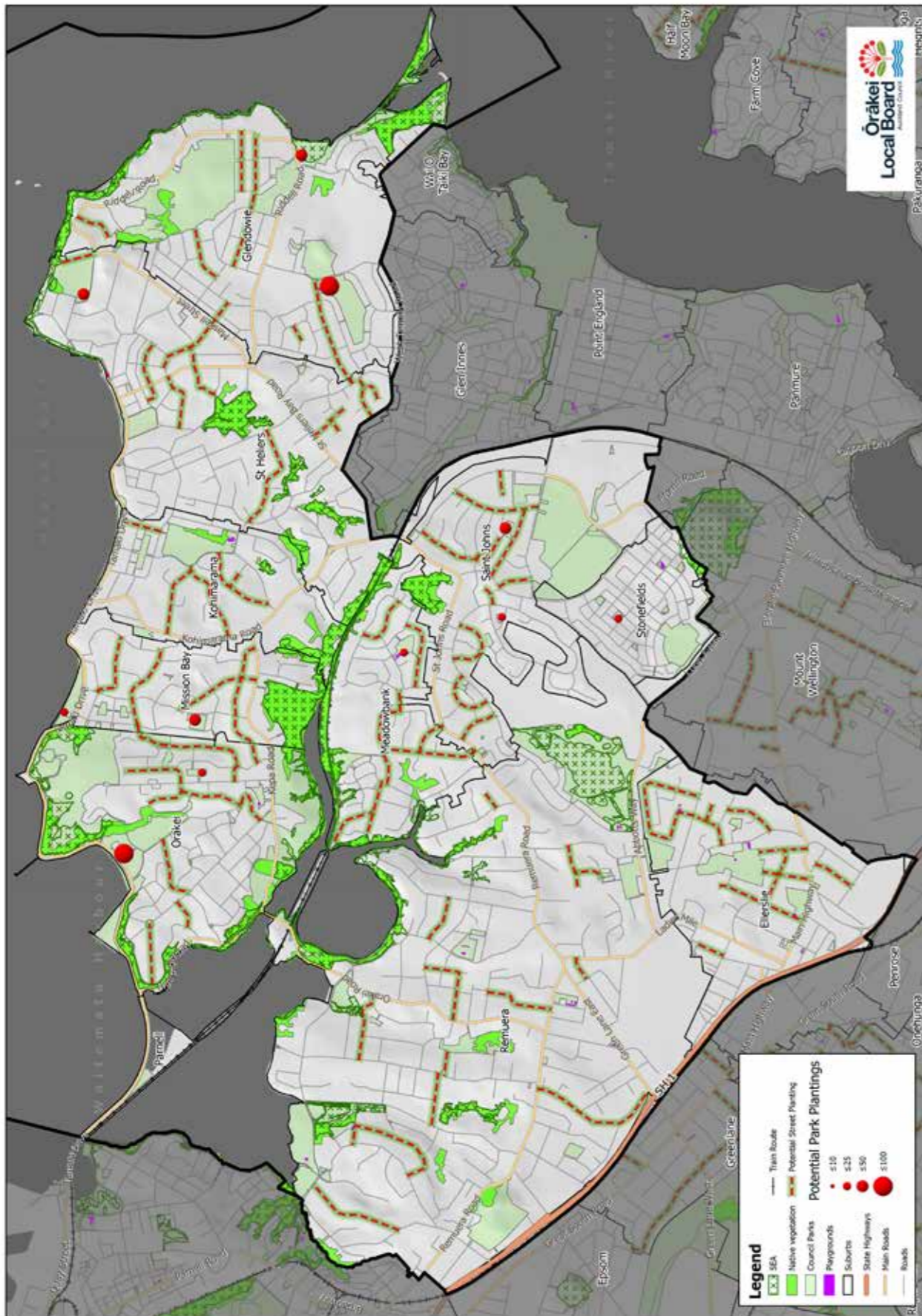
The private properties within the Ōrākei Local Board area have not been assessed. Berms measuring over 1 metre in width were assessed as suitable for potential tree planting. The location of potential tree planting sites are an approximation only and further detailed site investigations are required.

As outlined in the Action Plan Tree Planting Flowchart, a further detailed investigation is required to be undertaken so as to confirm suitability of locations; taking into account a variety of issues, i.e. consultation with all relevant stakeholders, underground services, visual amenity issues, plant species selection, future growth, form and site suitability.



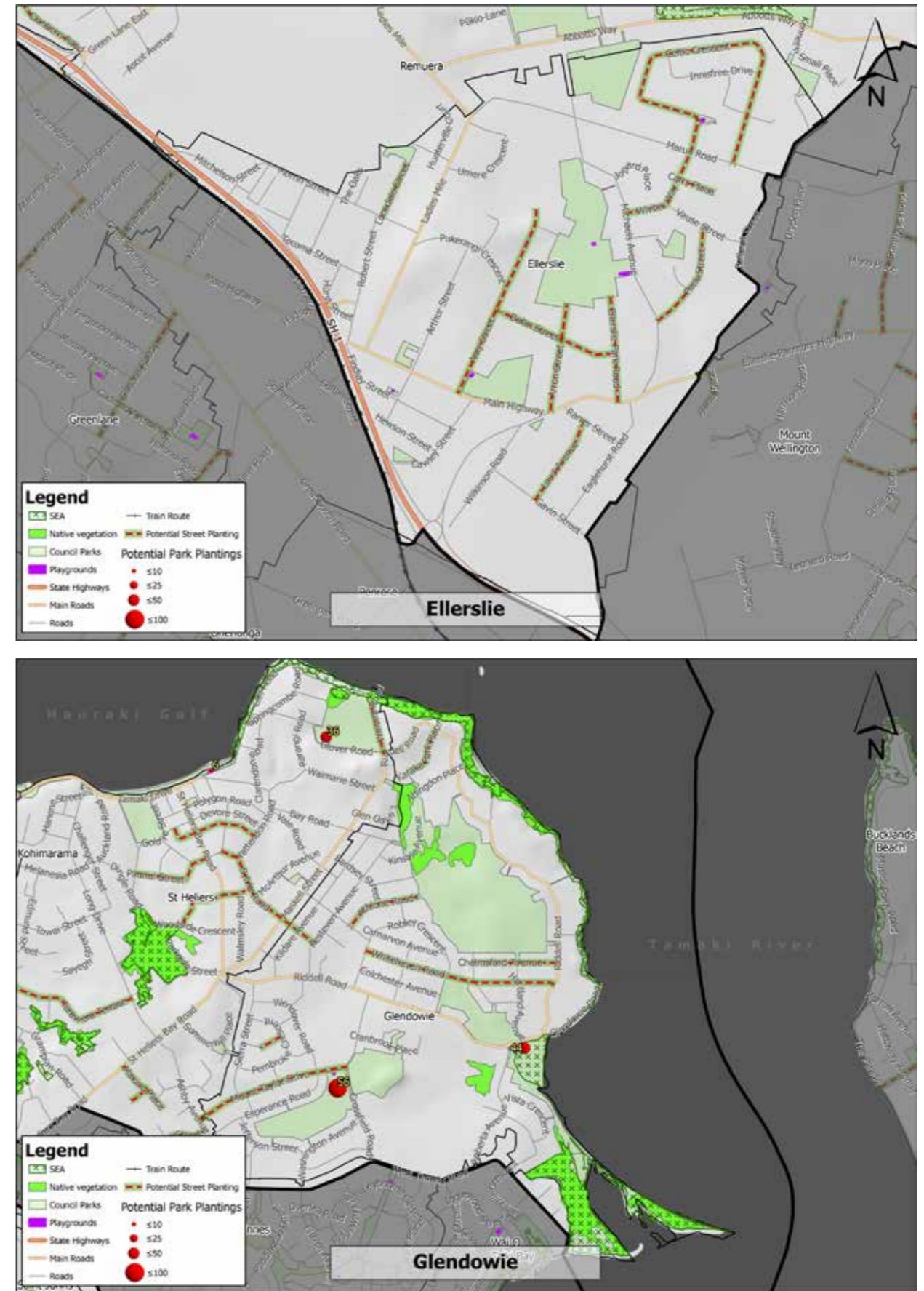
a) On-Site Data Capture Survey Form

b) Ōrākei Tree Planting Opportunities Map

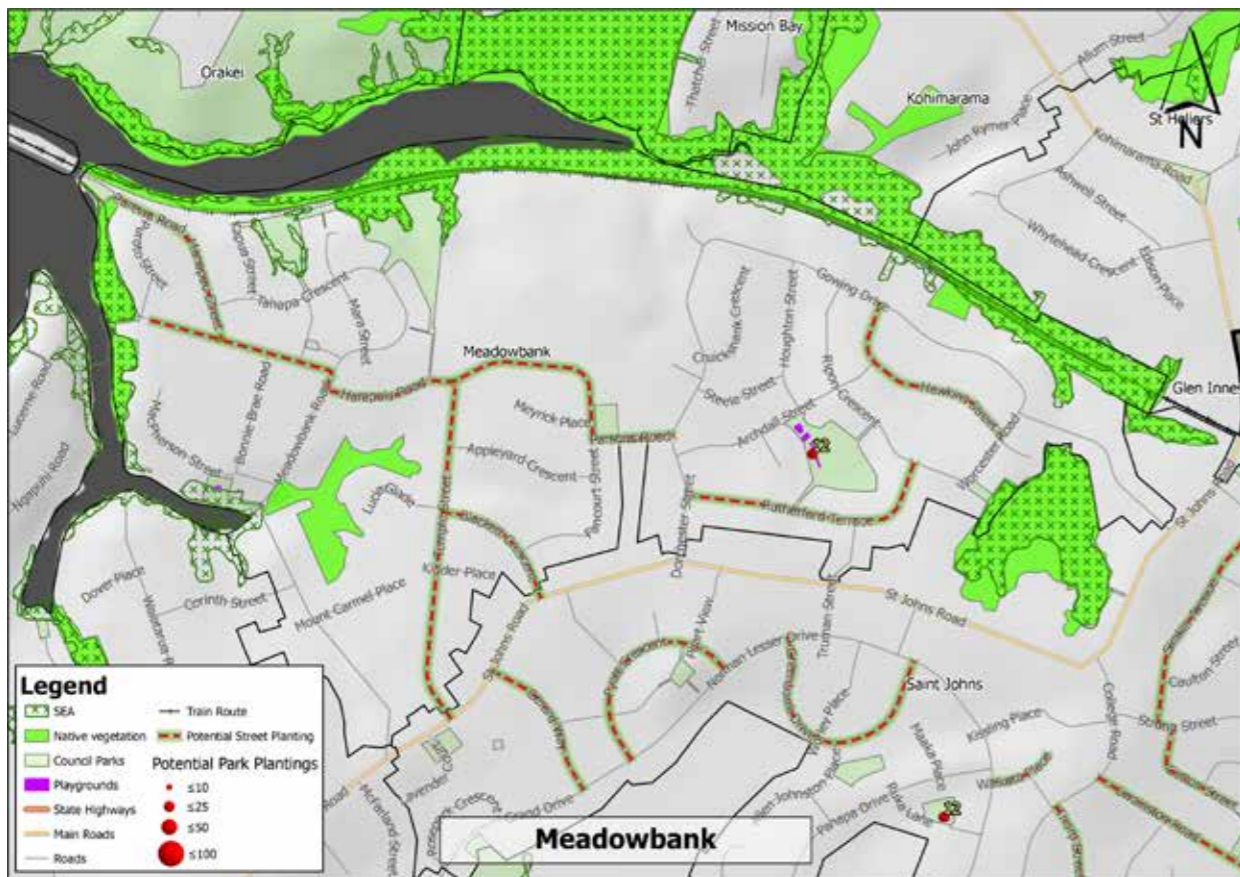
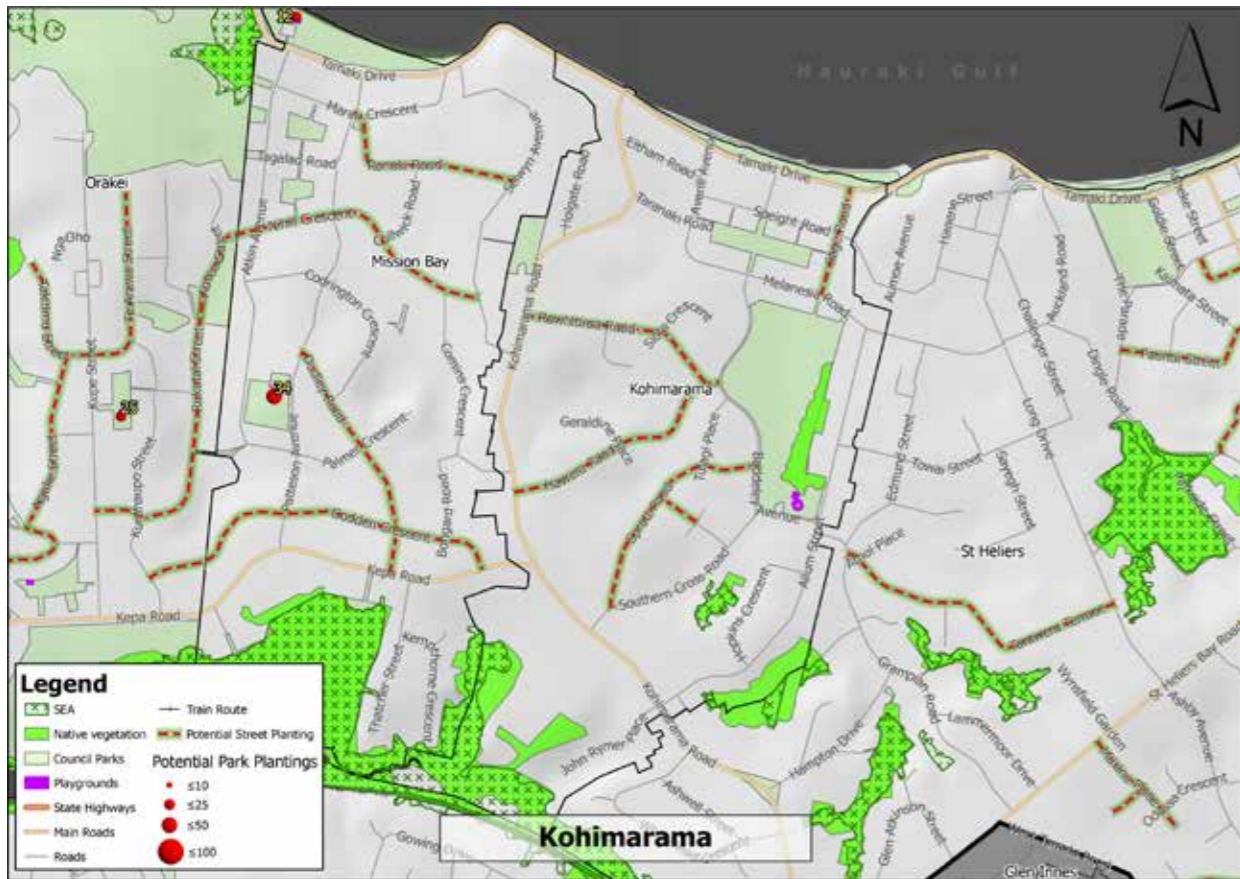


Map 4: Planting opportunity locations for the Ōrākei Local Board area

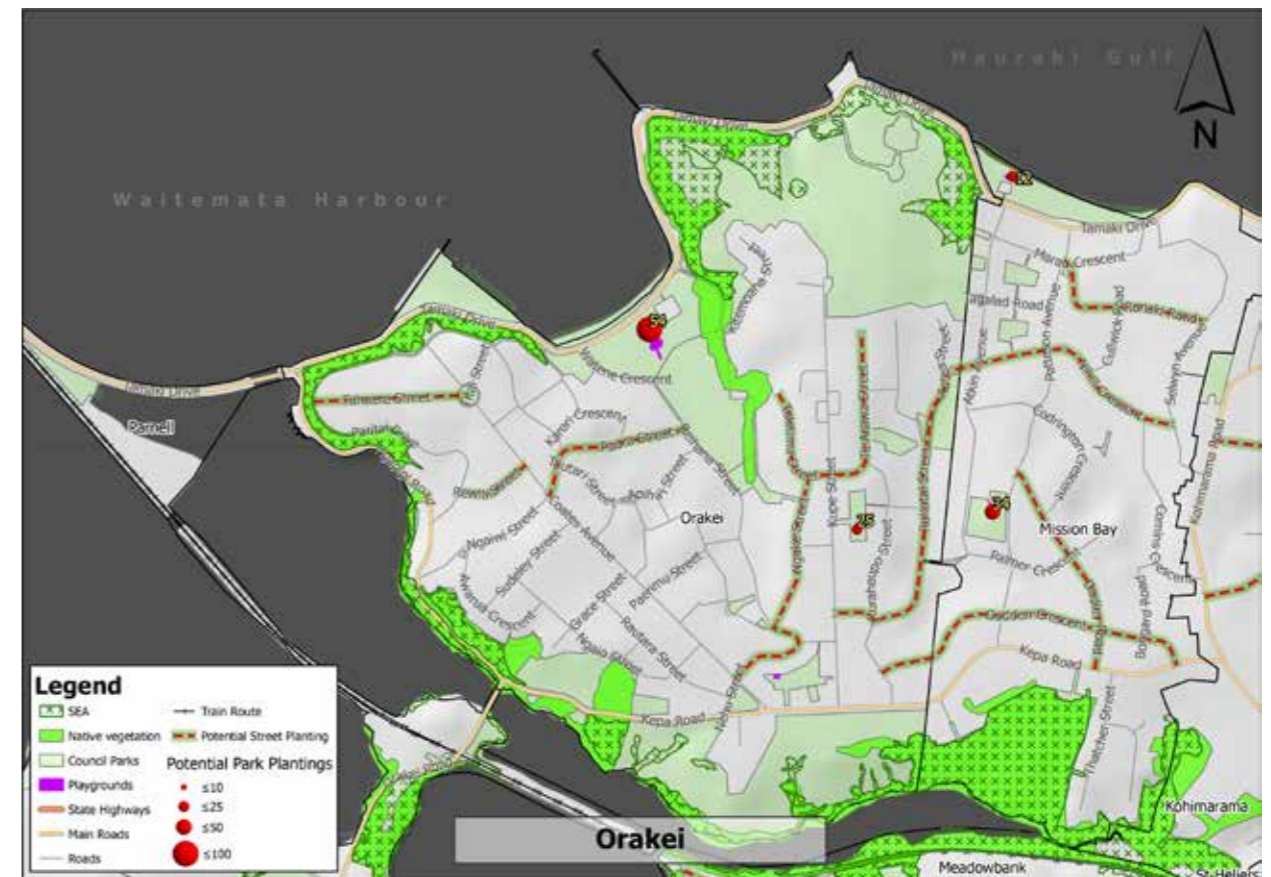
c) Suburb by Suburb Tree Planting Opportunities



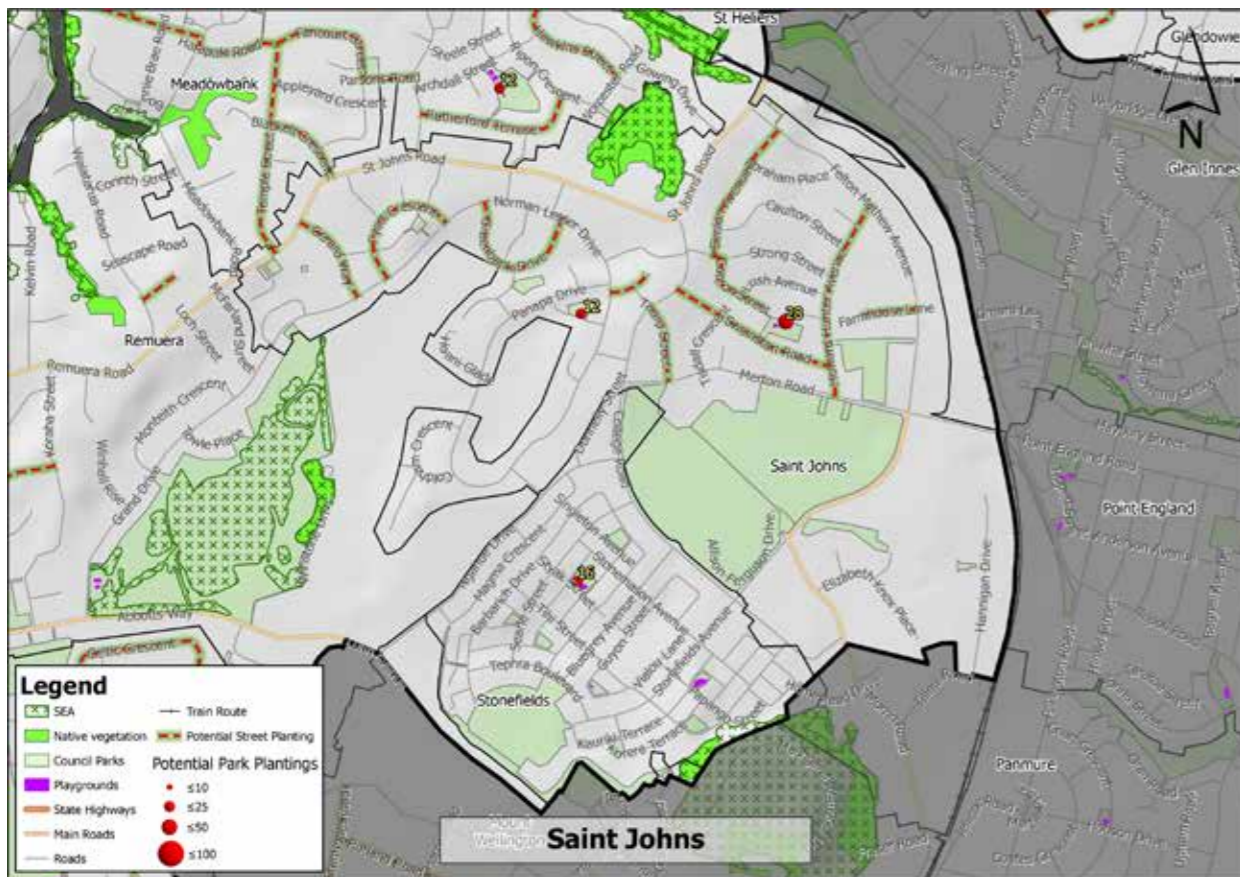
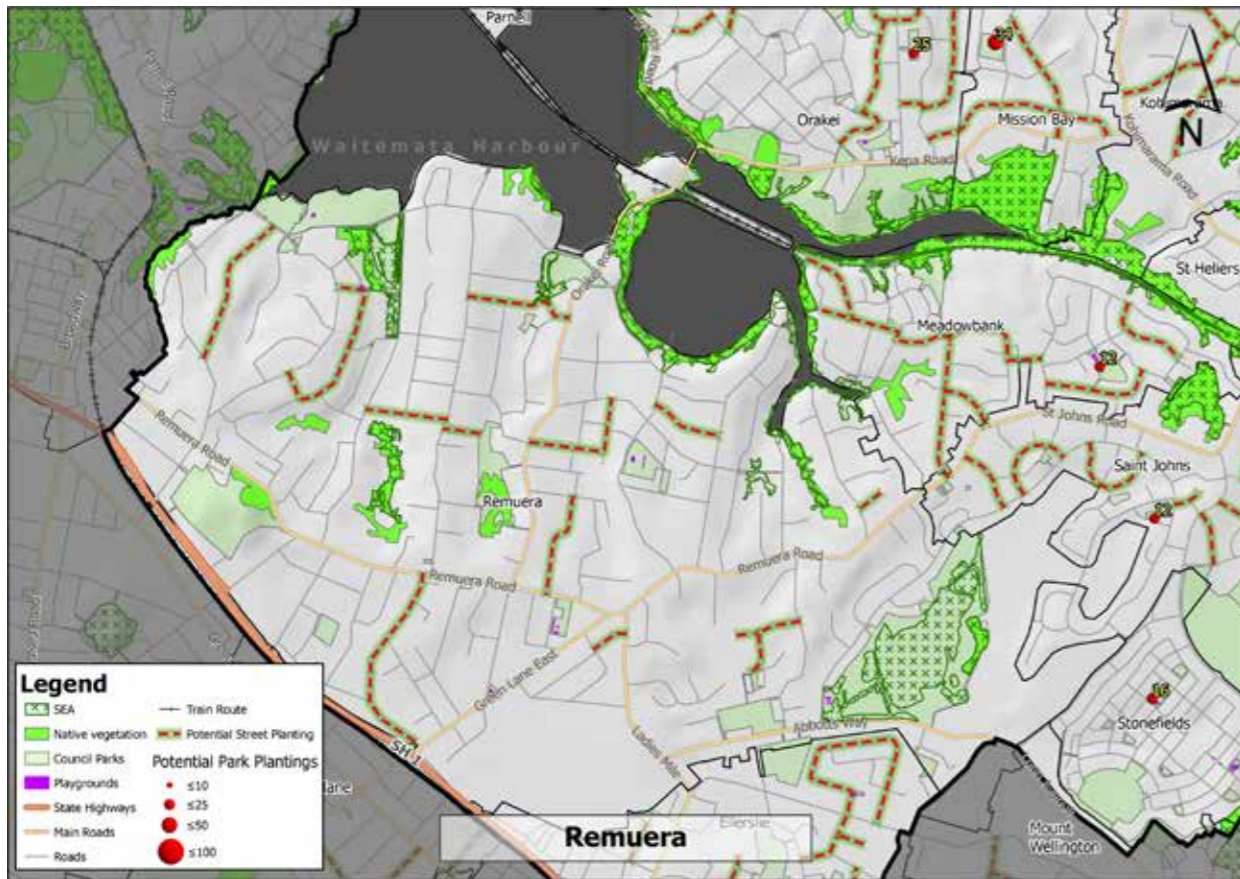
c) Suburb by Suburb
Tree Planting Opportunities (continued)



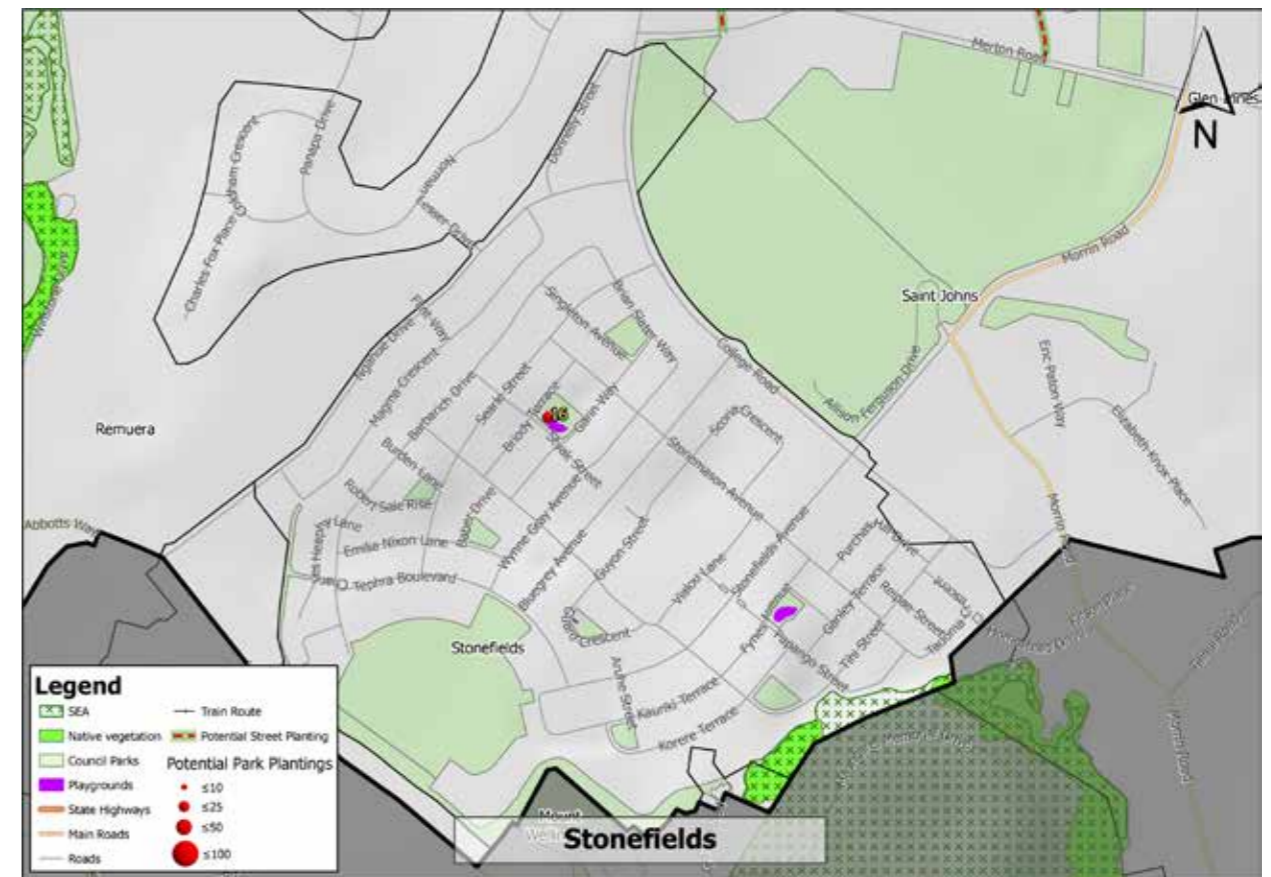
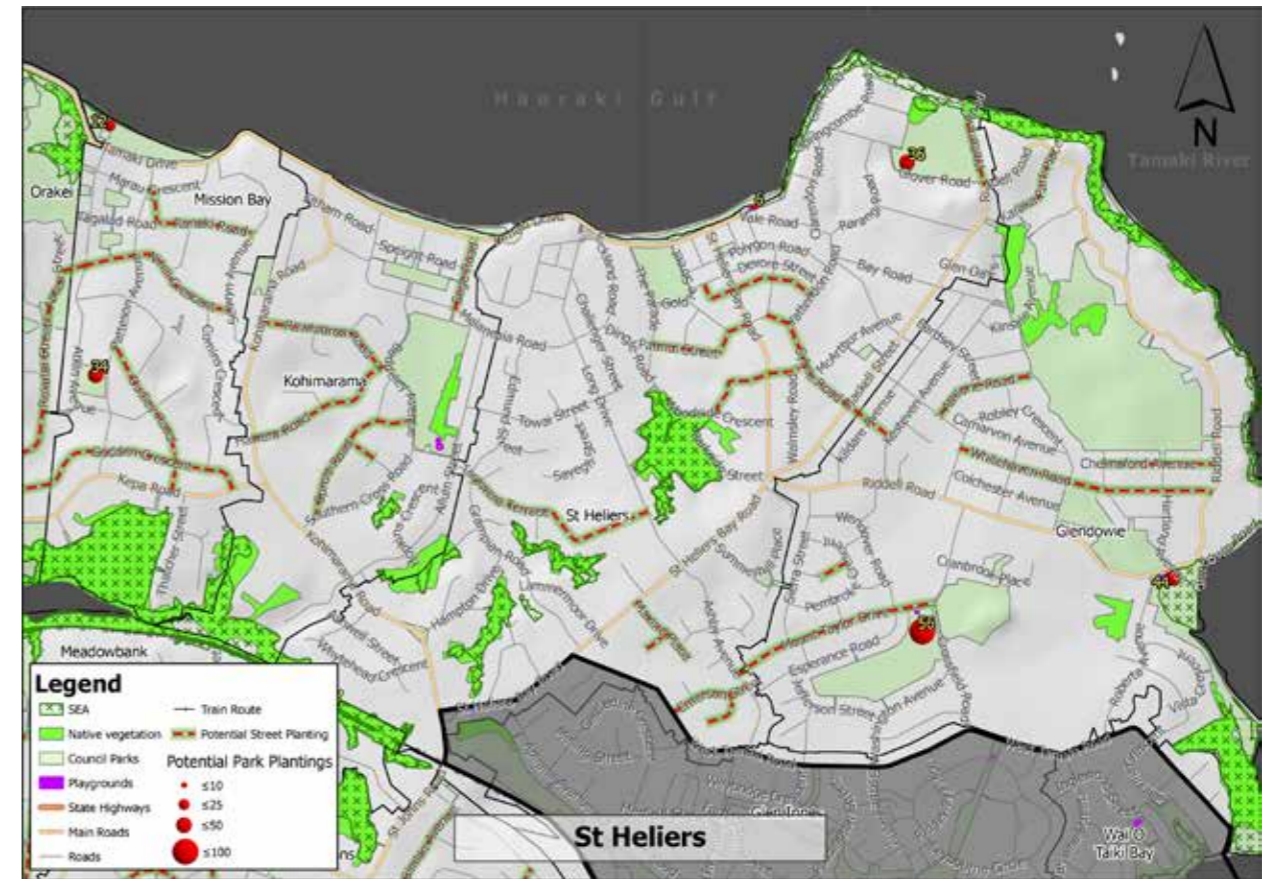
c) Suburb by Suburb
Tree Planting Opportunities (continued)



c) Suburb by Suburb
Tree Planting Opportunities (continued)



c) Suburb by Suburb
Tree Planting Opportunities (continued)



d) Ōrākei Park and Street Tree
Planting Opportunities'

The following tables detail the total number of planting opportunities within parks with playgrounds, along with possible planting sites within the road reserve.

In respect to recommended species to be planted within parks with playgrounds, this determination will occur when site-specific assessments are being undertaken. The tree species detailed in the 'Streets' table are a recommendation based on surrounding existing plantings.

Parks/Playgrounds Planting Opportunities

Name	Plantings Around Playgrounds	Plantings Throughout Park
Bluestone Park	8	8
Crossfield Reserve	18	38
Glover Park	6	30
Kupe North Reserve	8	17
Okahu Bay Reserve	8	46
Patteson Reserve	4	30
Roberta Reserve	6	38
Ruka Reserve	0	12
Rutherford Reserve	0	12
Swainston Reserve	6	22
Selwyn Reserve	12	0
St Heliers Bay Beach Reserve	6	0

Streets/Road Reserve Planting Opportunities

Name	Tree Species	Potential Planting Opportunities
Benbow Street	<i>Metrosideros excelsa</i>	19
Paunui Street	<i>Alectryon excelsus</i>	25
Sylvia Road	<i>Prunus</i> sp.	21
Gifford Street	<i>Alectryon excelsus</i>	3
Brilliant Street	<i>Sophora chathamica</i>	10
Waitara Road	<i>Sophora chathamica</i>	9
Maxine Place	<i>Sophora chathamica</i>	10
Helen Place	<i>Sophora microphylla</i>	5
Tarawera Terrace	<i>Michelia doltsopa</i>	37
Emerson Street	<i>Sophora chathamica</i>	14

d) Ōrākei Park and Street Tree
Planting Opportunities (continued)

Streets/Road Reserve Planting Opportunities continued

Name	Tree Species	Potential Planting Opportunities
Modena Crescent	<i>Sophora microphylla</i>	11
Sprott Road	<i>Olea europaea</i>	21
Godfrey Place	<i>Olea europaea</i>	5
Hawera Road	<i>Hymenosporum flavum</i>	17
Rawhitiroa Place	<i>Vitex lucens</i>	11
Sage Road	<i>Sophora chathamica</i>	5
Ronaki Road	<i>Vitex lucens</i>	11
Dudley Road	<i>Metrosideros excelsa</i>	23
Godden Crescent	<i>Metrosideros excelsa</i>	25
Tokomaru Street	<i>Sophora microphylla</i>	5
Rukutai Street	<i>Vitex lucens</i>	11
Aotea Street	<i>Vitex lucens</i>	4
Nihill Crescent	<i>Sophora chathamica</i>	11
Te Arawa Street	<i>Alectryon excelsus</i>	9
Takitimu Street	<i>Alectryon excelsus</i>	12
Reihana Street	<i>Alectryon excelsus</i>	9
Ngake Street	<i>Sophora chathamica</i>	9
Paora Street	<i>Magnolia</i> sp.	16
Rewiti Street	<i>Sophora microphylla</i>	7
Tuhaere Street	<i>Metrosideros excelsa</i> "Mistral"	11
Karaka Park Place	<i>Alectryon excelsus</i>	13
Athlone Road	<i>Sophora chathamica</i>	14
Whitehaven Road	<i>Sophora chathamica</i>	11
Chelmsford Avenue	<i>Melia azedarach</i>	9
Mount Taylor Drive	<i>Metrosideros excelsa</i> "Mistral"	9
Granada Place	<i>Pittosporum crassifolium</i>	9
Simkin Avenue	<i>Tristaniopsis laurina</i>	7
Cotton Street	<i>Lagerstroemia</i> sp.	11
Swainston Road	<i>Lagerstroemia</i> sp.	13
Howard Hunter Avenue	<i>Lophostemon confertus</i>	5
Farmhouse Lane	<i>Cordyline australis</i>	11
Thorp Street	<i>Prunus</i> sp.	4

d) Ōrākei Park and Street Tree
Planting Opportunities (continued)

Streets/Road Reserve Planting Opportunities *continued*

Name	Tree Species	Potential Planting Opportunities
Waikato Place	<i>Melia azedarach</i>	4
Greenbank Drive	<i>Sophora microphylla</i>	22
Pyatt Crescent	<i>Melia azedarach</i>	7
Gerard Way	<i>Melia azedarach</i>	6
Temple Street	<i>Prunus sp.</i>	12
Fancourt Street	<i>Sophora chathamica</i>	12
Parsons Road	<i>Alectryon excelsus</i>	4
Hawkins Street	<i>Michelia doltsopa</i>	20
Rutherford Terrace	<i>Metrosideros excelsa</i>	11
Blackett Crescent	<i>Alectryon excelsus</i>	5
Meadowbank Road	<i>Alectryon excelsus</i>	5
Manapau Street	<i>Pittosporum tenuifolium</i>	5
Purewa Road	<i>Pittosporum crassifolium</i>	6
Harapaki Road	<i>Sophora chathamica</i>	8
Keith Avenue	<i>Sophora chathamica</i>	6
Maungarei Road	<i>Sophora microphylla</i>	30
Hilltop Street	<i>Sophora microphylla</i>	4
Kenny Road	<i>Alectryon excelsus</i>	8
Raumati Road	<i>Melia azedarach</i>	8
Komarū Street	<i>Metrosideros excelsa</i>	11
Ranui Road	<i>Alectryon excelsus</i>	11
Ormonde Road	<i>Prunus sp.</i>	8
Clonburn Road	<i>Alectryon excelsus</i>	11
Waimea Lane	<i>Alectryon excelsus</i>	4
Seaview Road	<i>Sophora chathamica</i>	12
Wharua Road	<i>Lagerstroemia sp.</i>	7
Bell Road	<i>Sophora microphylla</i>	39
Aldred Road	<i>Magnolia sp.</i>	12
Manawa Road	<i>Magnolia sp.</i>	9

e) Planting Examples

Tree Pit Planting



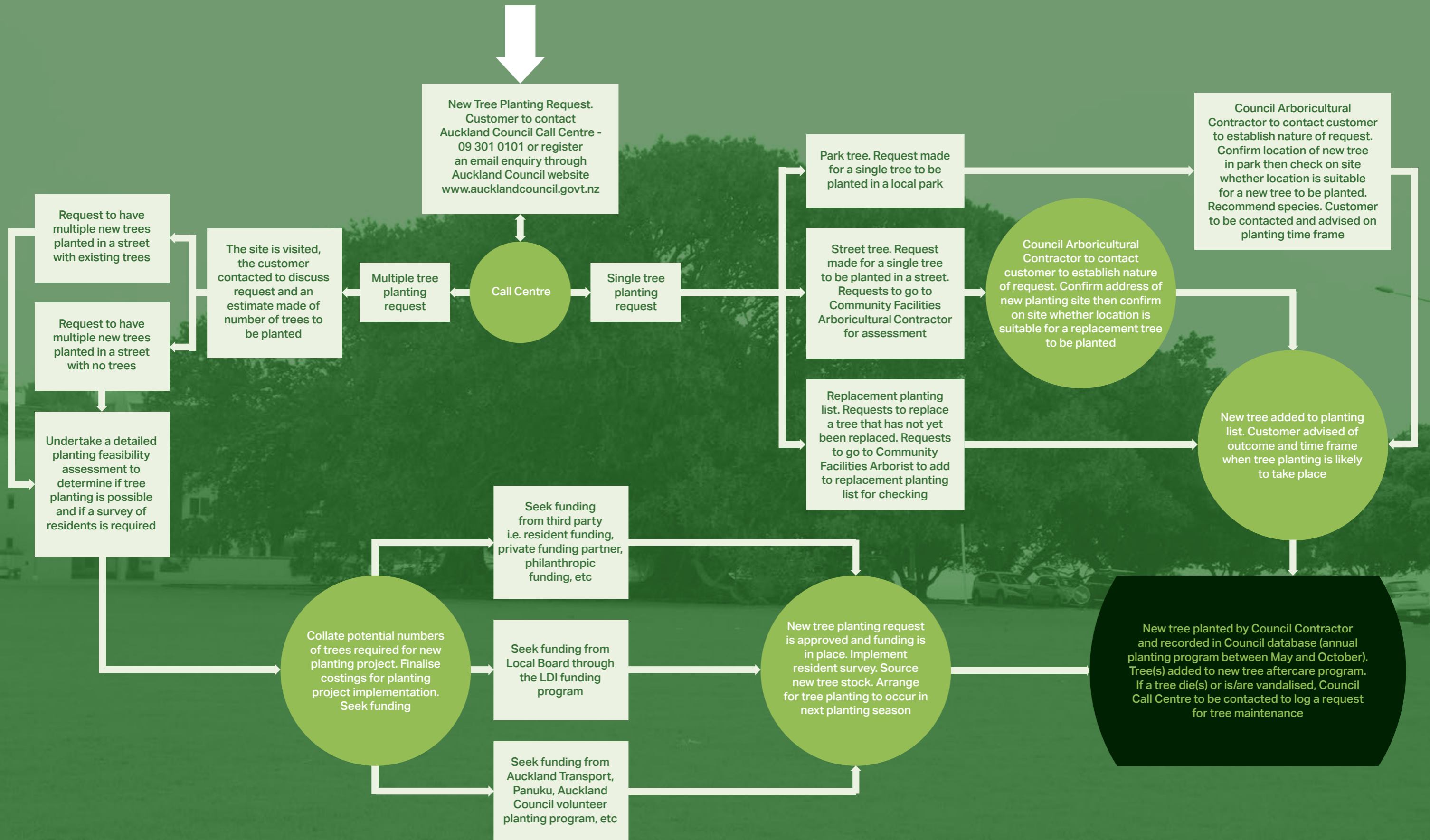
Park Planting



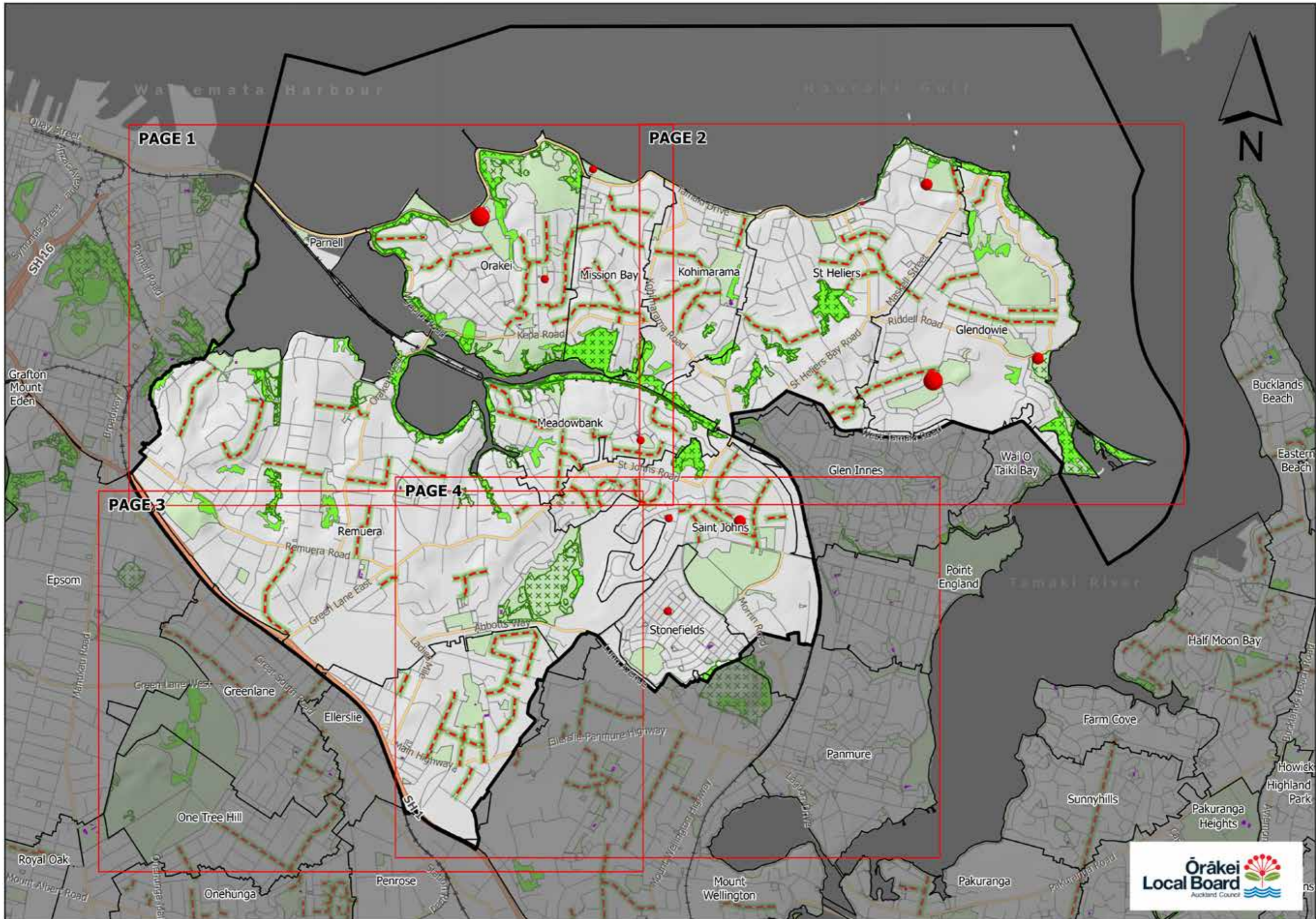
Berm Planting



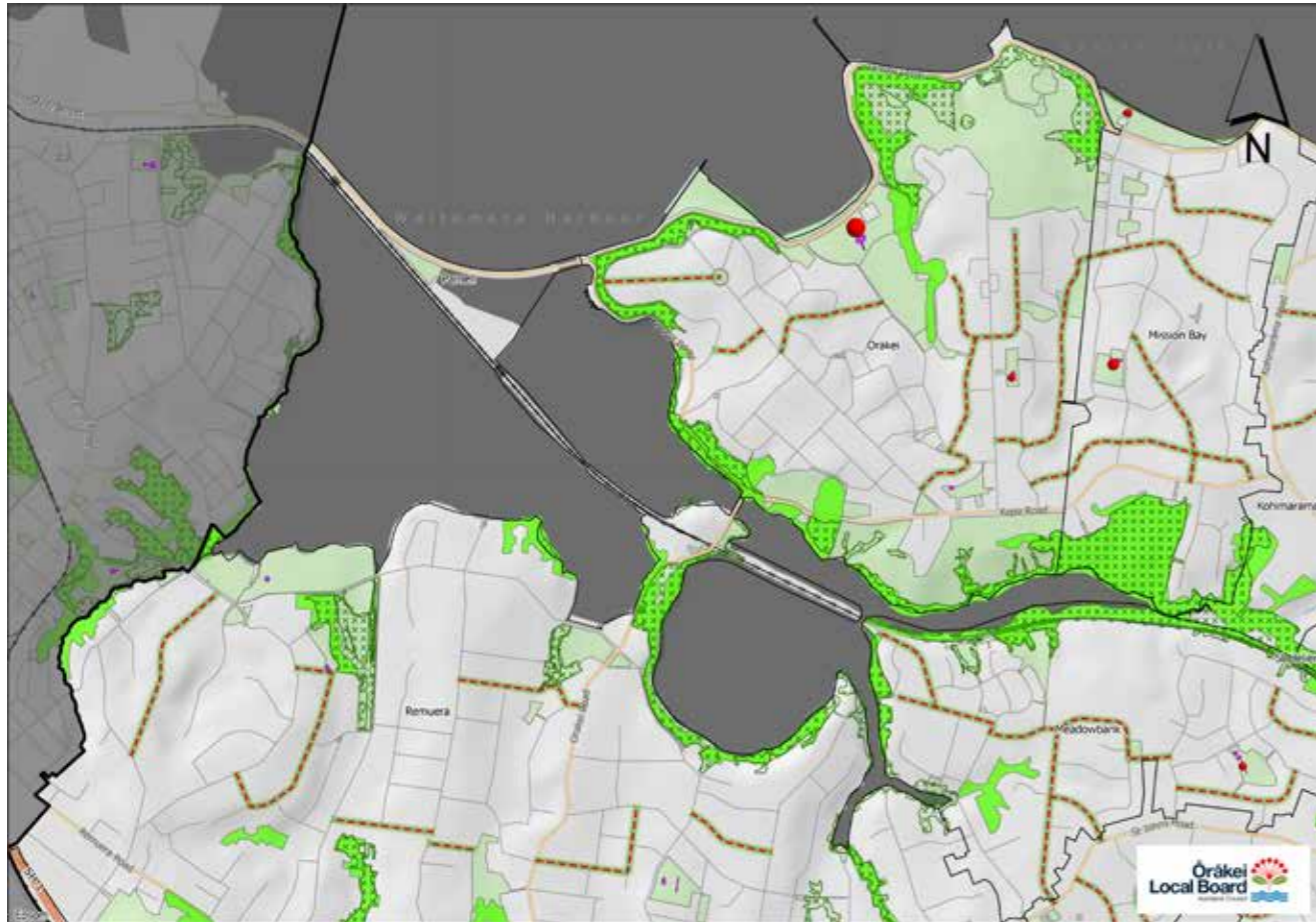
f) Auckland Council Tree Planting
Request Process



g) Local Board Overview Map

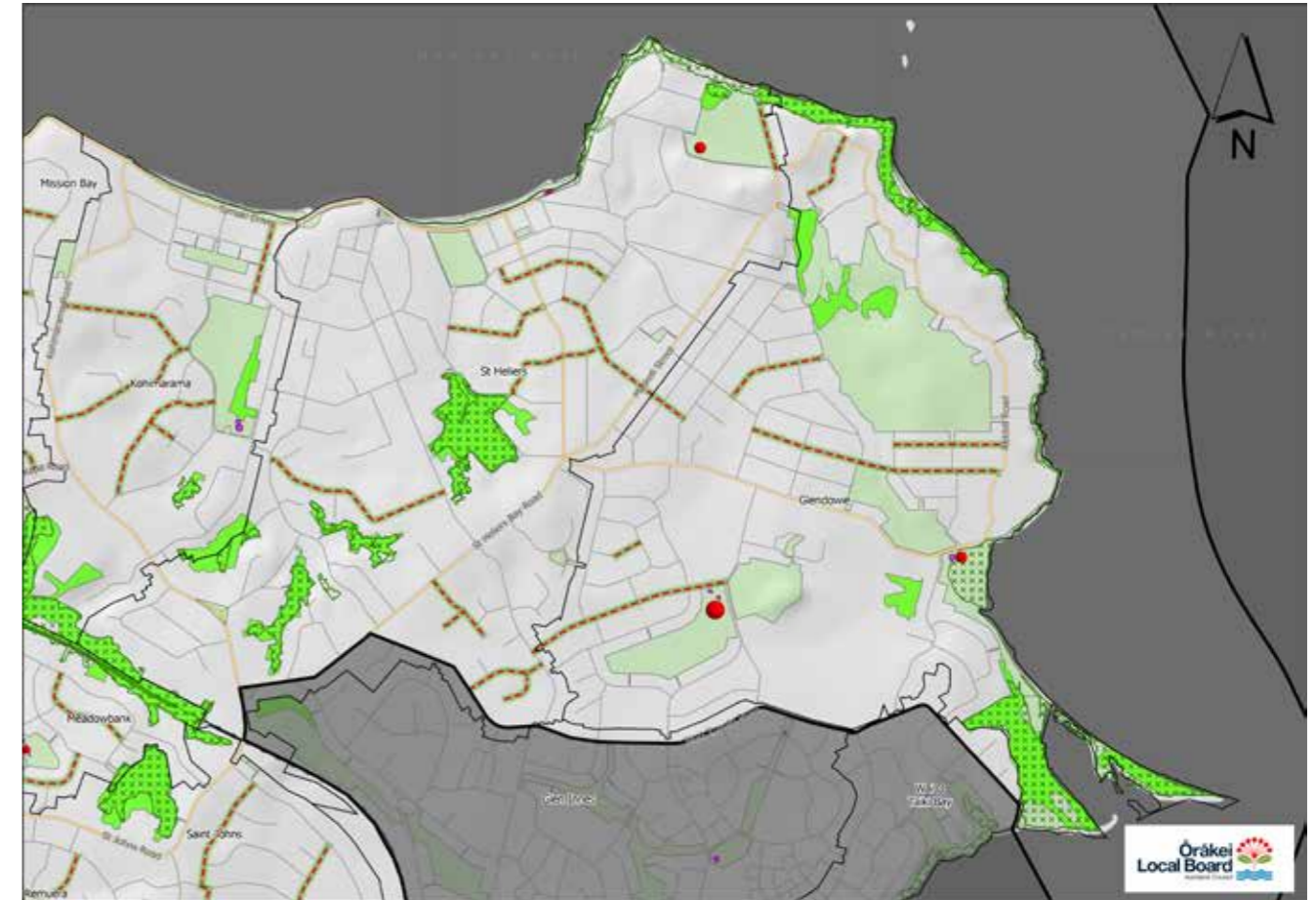


h) Tree Planting Opportunities Maps
Local Board Prioritisation



FOR BOARD DISCUSSION

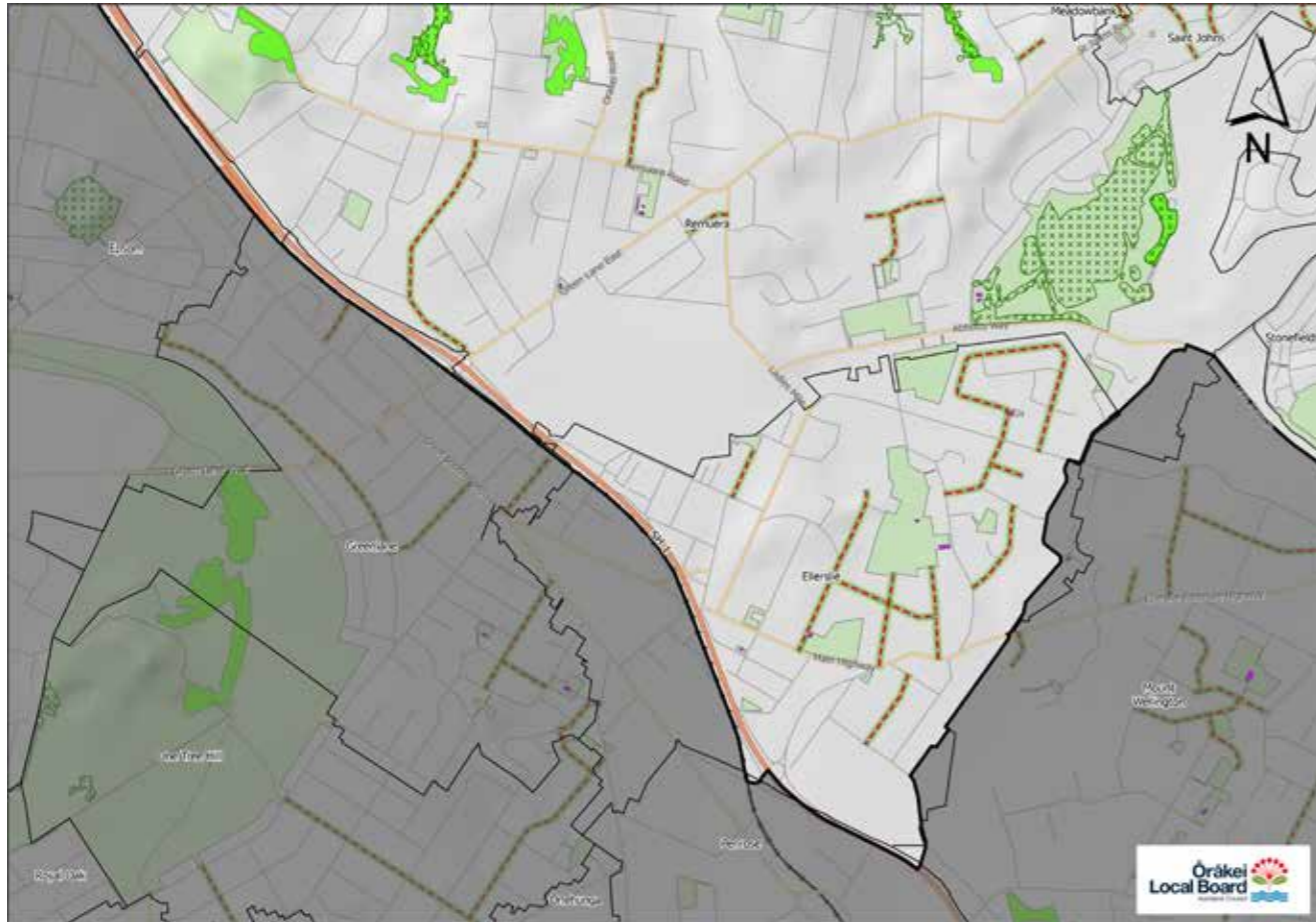
- ①
- ②
- ③
- ④
- ⑤



FOR BOARD DISCUSSION

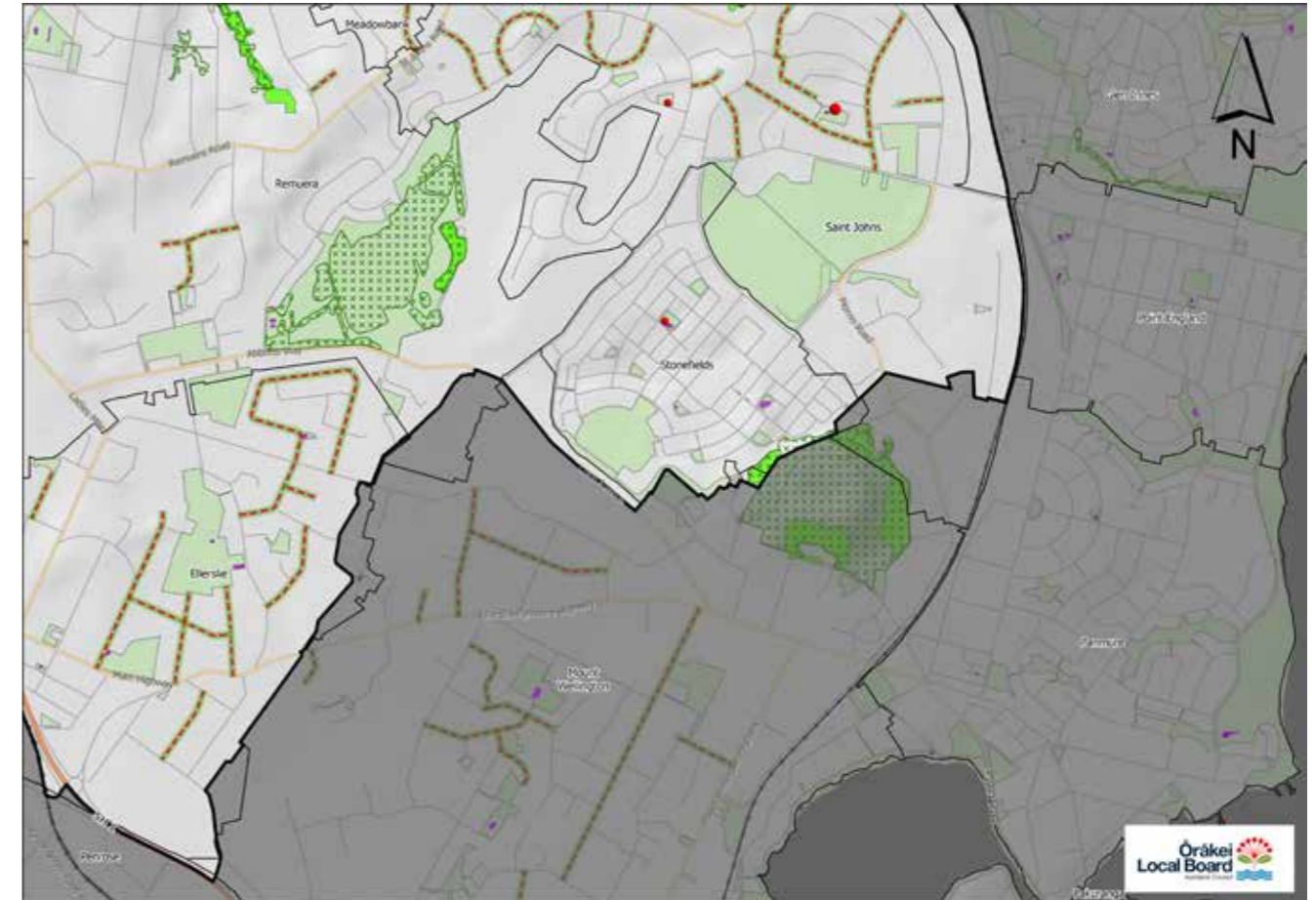
- ①
- ②
- ③
- ④
- ⑤

h) Tree Planting Opportunities Maps
Local Board Prioritisation (continued)



FOR BOARD DISCUSSION

- ①
- ②
- ③
- ④
- ⑤



FOR BOARD DISCUSSION

- ①
- ②
- ③
- ④
- ⑤

Printed on paper made
from 100% recycled
post-consumer waste.

