



Te Tohu o Te Auaunga

IMPLEMENTATION STRATEGY

REV_3 | February 2019

CONTENTS

1. CONTEXT

- 1.1 Te Auaunga Catchment
- 1.2 Te Auaunga Existing + Planned Projects
- 1.3 Sites of Significance
- 1.4 Character Areas

2. TE AUAUNGA TOHU IMPLEMENTATION STRATEGY

- 2.1 Implementation Strategy Applications
- 2.2 Implementation Strategy Catchment

3. APPENDICES

- Appendix A. Albert Eden Implementation Strategy
- Appendix B. Puketāpapa Implementation Strategy
- Appendix C. Whau Implementation Strategy

1

Te Tohu o Te Auaunga

CONTEXT

1.1

INTRODUCTION

Te Tohu o Te Auaunga is a project supported by all three local boards through which Te Auaunga flows (Puketāpapa, Albert-Eden, Whau). The purpose of the Tohu is to increase public awareness and engagement with the awa. The tohu is a symbol that was developed to represent the awa and the relationship of mana whenua with the awa. It was developed collaboratively among mana whenua and Whaotapu who are a collective of Tohunga Toi Ake and work across Tāmaki Makaurau and the motu.

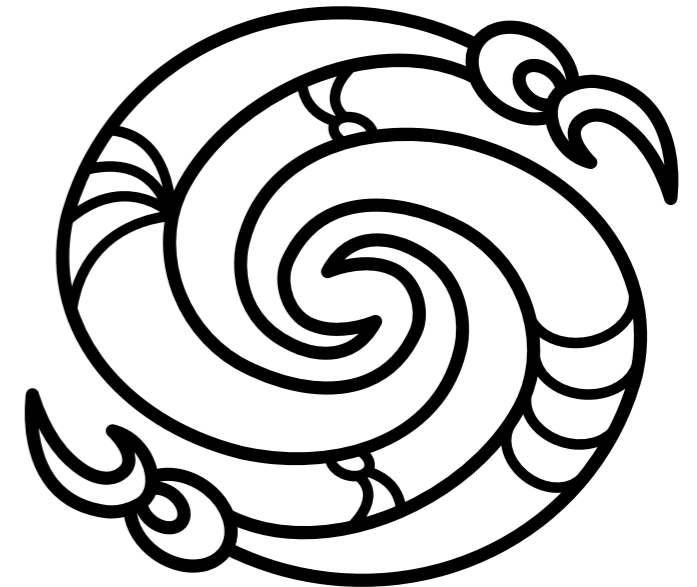
Mana whenua have been involved as partners in this project. Thirteen Mana whenua groups with interests in this area were invited to engage with the project. Mana whenua groups involved to date include: Te Akitai Waiohua, Ngāti Whātua o Ōrākei, Ngāi Tai ki Tāmaki, Te Kawerau A Maki, Te Ara Rangatahi o Te Iwi o Ngāti Te Ata Waiohua, Ngāti Tamaoho, Ngaati Whanaunga and Ngāti Te Ata Waiohua. Friends of Oakley Creek have also been engaged as a key stakeholder.

This document is a design guide for applications of the tohu across the length of the awa. This will ensure an integrated approach for use of the tohu across the entire catchment. Local board specific strategies will be developed to guide local implementation stages of the tohu. Underlying this project is the vision, mission and strategy developed for Te Auaunga:

“We aim to integrate mātauranga Māori and environmentally sustainable practices to restore the mauri of Te Auaunga so it becomes a thriving, flowing creek in a green corridor that is treasured and respected for generations to come.”

Additionally, this guide is underpinned by the two themes from the strategy - Restoration of Mauri and Empowerment.


TE AUAUNGA TOHU



Tohu concepts and drawings by Whaotapu Trust: Sunnah Thompson & Wikuki Kingi. Digital rendering and design by River: Marcus Tsang, Rainui Teihotua, & Isaac Rolfe

1.2 TE AUAUNGA CATCHMENT

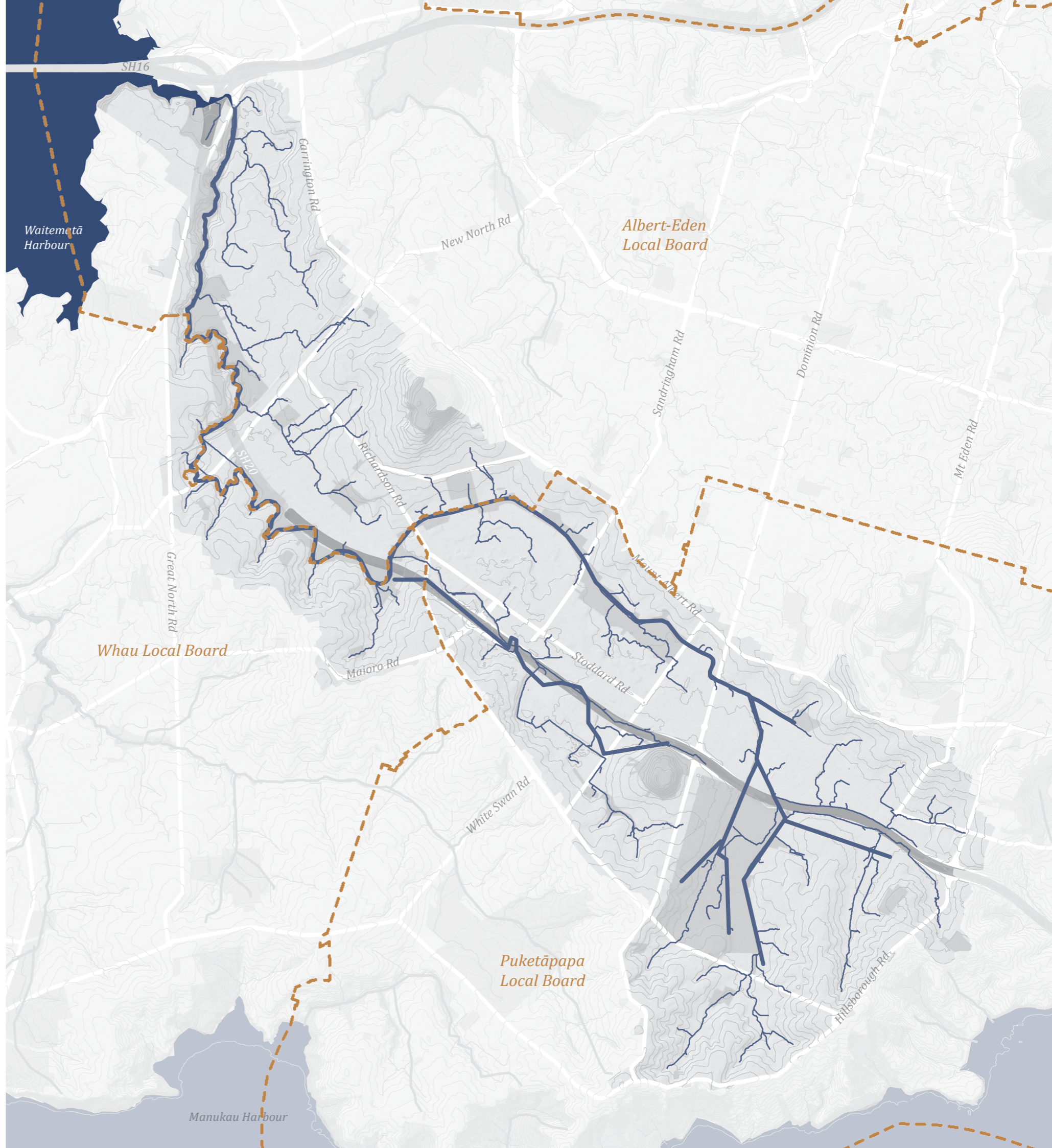
KEY

-  Local board boundaries
-  Te Auaunga
-  Te Auaunga feeders
-  Motorway
-  Main arterial road
-  Te Auaunga catchment
-  Open space
-  Te Auaunga receiving harbour



1:25,000 @ A3

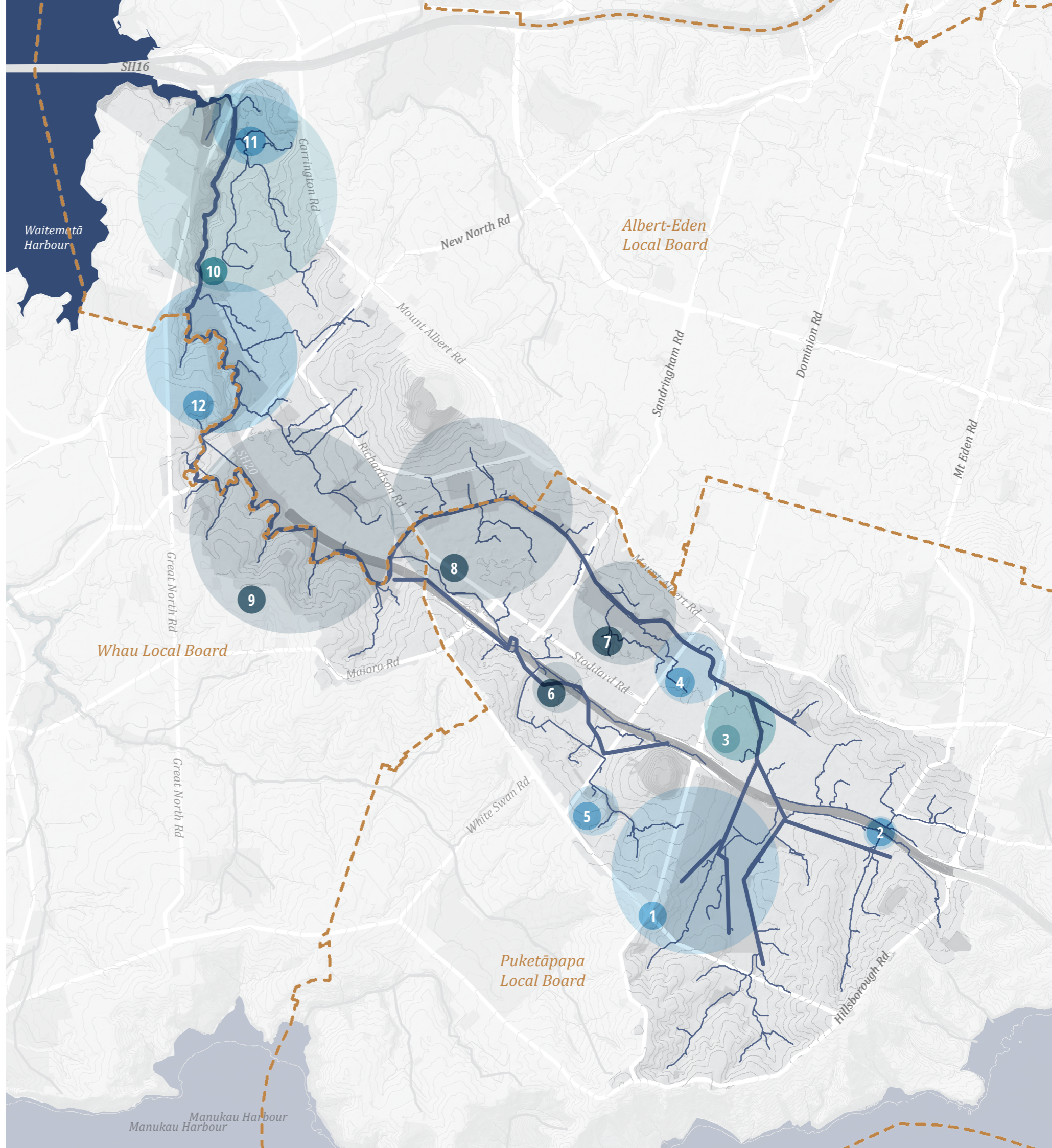
0 | 0.5 | 1km



1.3 TE AUAUNGA EXISTING + PLANNED PROJECTS













KEY

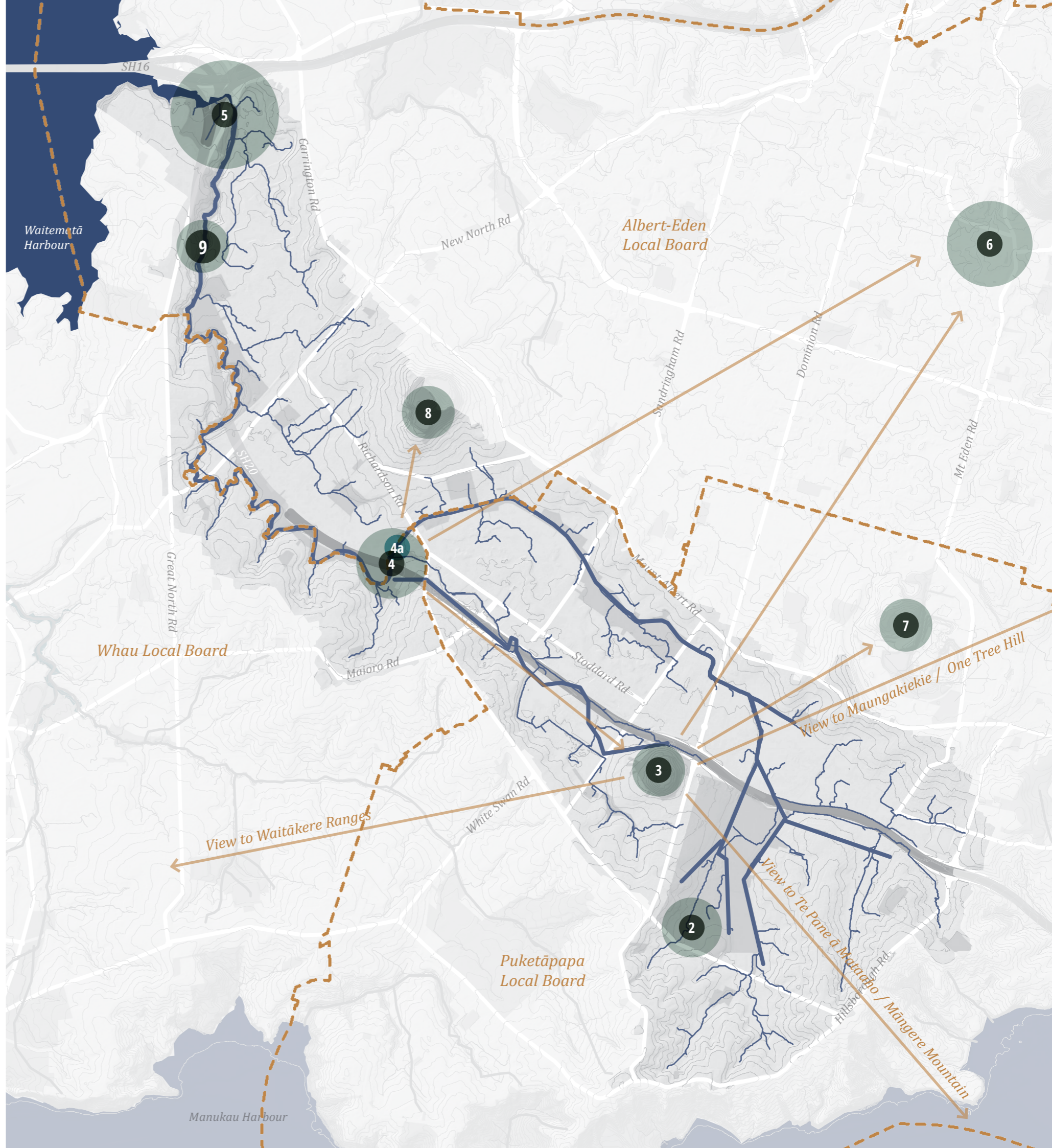
- Planned projects
- Existing / complete projects
- Combination of planned and existing / complete projects
- 1 Keith Hay Park - potential future naturalisation works
- 2 Along SH20 - potential habitat enhancement and bank stability works
- 3 Mount Roskill Intermediate - some riparian planting completed to date; Healthy Waters planning for comprehensive plan for the schools 2020 budget
- 4 Winstone to May Roads - potential future naturalisation works
- 5 Freeland Reserve - potential future naturalisation works
- 6 Along SH20 - potential habitat enhancement and bank stability works
- 7 Mt Roskill War Memorial Park naturalisation / mitigation Healthy Waters project and park concept plan
- 8 Walmsley / Underwood naturalisation works (underway)
- 9 Alan Wood and Kūkuwai Park naturalisation works (complete)
- 10 Open spaces from New North Rd to SH16/SH20 interchange - range of existing & potential habitat enhancement and bank stability projects
- 11 Unitec (Wairaka stream) restoration as part of housing development
- 12 Healthy Waters Erosion Control Works



1.4 SITES OF SIGNIFICANCE

KEY

-  Te Auaunga Catchment Borders
-  2 Molly Green Reserve - Place where Te Auaunga first emerges
-  3 Puketāpapa / Mount Roskill
-  4 Te Whitinga Bridge - Views of local Maunga
-  4a Convergence of two streams
-  5 Stream mouth to Waitematā Harbour
-  6 Maungawhau / Mount Eden
-  7 Te Tatuā a Riukiuta / Three Kings
-  8 Owairaka / Te Ahi ka roa a Raka / Mount Albert
-  9 Oakley Creek Waterfall
-  Views to Maunga
-  Local board boundaries

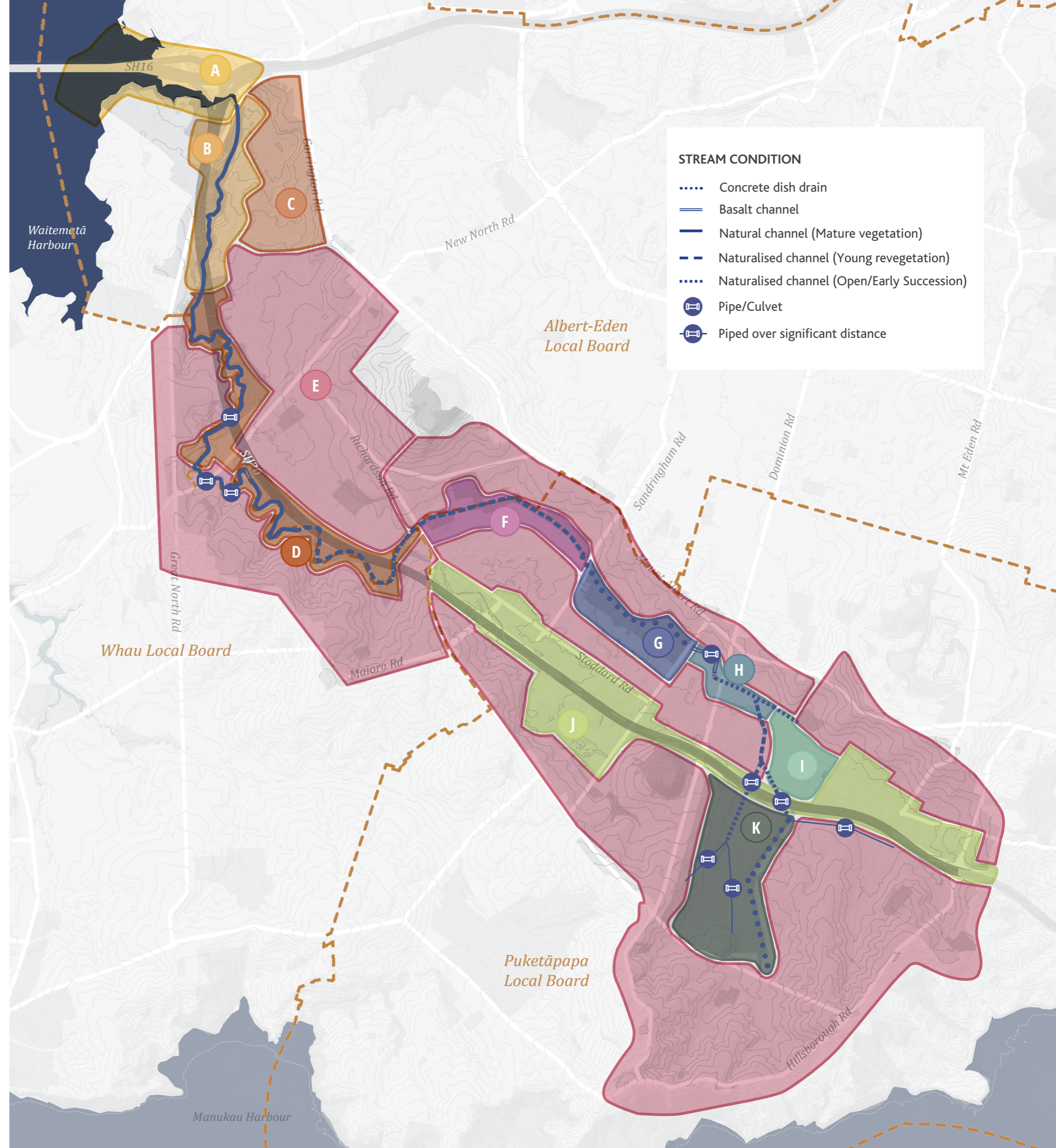


1.5 CHARACTER AREAS

There are 11 'character areas' along Te Auaunga with distinctive uses, spatial characteristics, environmental patterns and aesthetic experiences. Defining character areas helps to frame and organise the site into areas with similar opportunities and constraints which require similar management and maintenance.

KEY

- Character Area A - River Mouth / Estuarine
- Character Area B - Mixed Riparian Bush
- Character Area C - Institutional Infrastructure & Open Space (Future Residential)
- Character Area D - Parkland & Native Riparian Bush
- Character Area E - Residential with Pocket Parks
- Character Area F - Walmsley / Underwood Parks - Informal Recreation Zone
- Character Area G - War Memorial Park - Sport and Active Recreation Zone
- Character Area H - Residential / Suburban Open Channel
- Character Area I - Mt Roskill Schools - Institutional Infrastructure & Open Space
- Character Area J - Industrial & Motorway
- Character Area K - Keith Hay Park & Akarana Golf Course - Sport and Active Recreation Zone
- Local board boundaries



2

Te Tohu o Te Auaunga

IMPLEMENTATION STRATEGY

2.1 IMPLEMENTATION STRATEGY_ APPLICATIONS

1



MAURI STONE

The tohu is carved into locally sourced basalt either by itself or together with the name and/or story. The mauri stone can play a role in custom elements such as mahi toi, commissioned art, toka Māori and/or water features that might be incorporated along the awa. The purpose of the mauri stones will be confirmed by mana whenua in February 2019. The outcome may impact the proposed locations)

2



INTERPRETIVE SIGNAGE

The tohu is included in new interpretive media, including the story of its development, purpose and significance to mana whenua. This will help raise the understanding of local communities of the tohu symbol and it's story. All other interpretive signage should seek to incorporate the tohu as a wayfinding tool.

3



PAINTED SURFACES

Paint and stencilling may also be used in custom elements such as commissioned murals or on horizontal surfaces such as footpaths to indicate the presence of Te Auaunga.

4



ART INSTALLATION

The tohu and other elements can be integrated into stand alone contemporary mahi toi and commissioned art pieces. In the long term, large art installations could be considered at key sites along the awa. In the short term, local artists can be commissioned to produce smaller scale public artwork, or through ringatoi Māori mana whenua can create and install contemporary mahi toi applications.

5



MILESTONE MARKERS

The tohu is incorporated into milestone markers throughout the catchment, either onto existing markers and/or into new markers.

6



BOLLARD MARKINGS

The tohu is marked onto a bollard through several possible applications, as referred to in the Design Guide. Options include carving, routing, branding, etching or metal cut-outs.

7



POU WHENUA

Pou whenua are carved wooden posts used to mark territorial boundaries or places of significance and can be used as an application method in prominent, distinct places along the awa to mark specific sites. Carvings on the pou may or may not incorporate the tohu. Mana whenua will identify the carver(s) to engage.

8



RIPARIAN PLANTING

Planting along the awa can support and enhance other tohu applications and help restore the mauri of the awa. Many sections of the awa have steep banks and/or limited riparian canopy cover and the application of riparian planting as a tohu application would complement other applications by reinforcing cues to care.

9



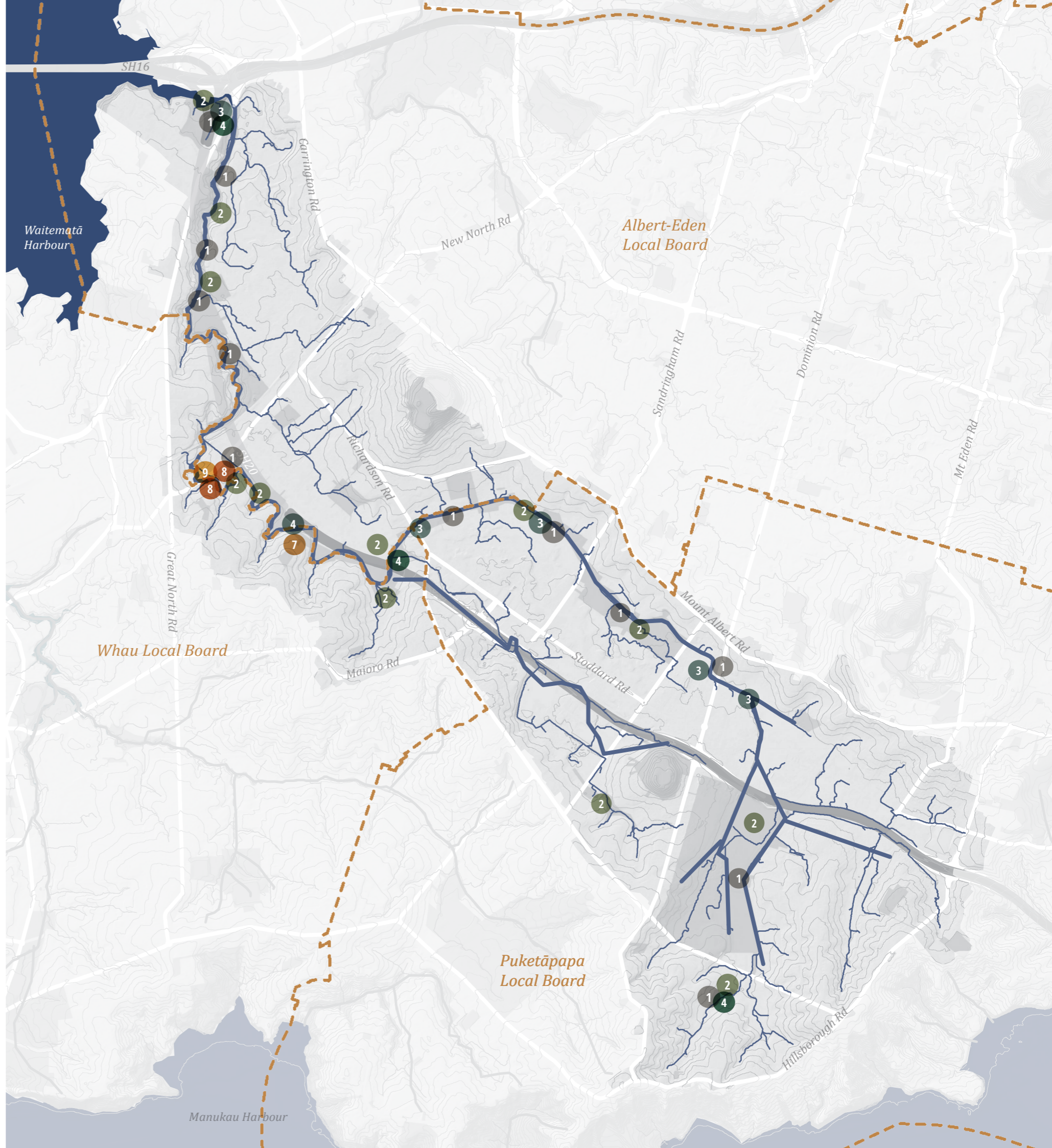
HORIZONTAL SURFACES*

Horizontal surfaces such as footpaths, roads and kerbs can be used to communicate supporting information about the tohu such as the name, story and/or map. The horizontal surfaces will utilised the tohu colour palette and font. Applications could include, but should not be limited to; bronze casting, stickers, sand-etching and projections etc. No part of the tohu itself shall be incorporated into the horizontal surface application.

2.2 IMPLEMENTATION STRATEGY_ CATCHMENT

KEY

- 1 MAURI STONE
- 2 INTERPRETIVE SIGNAGE
- 3 PAINTING SURFACES
- 4 ART INSTALLATION
- 5 MILESTONE MARKERS
- 6 BOLLARD MARKINGS
- 7 POU WHENUA
- 8 RIPARIAN PLANTING
- 9 HORIZONTAL SURFACES



Appendix A

Te Tohu o Te Auaunga Implementation Strategy

ALBERT EDEN LOCAL BOARD

REV_3 | February 2019

ALBERT EDEN IMPLEMENTATION STRATEGY_MAP

KEY

- 1 MAURI STONE**
 - 1a_ Beginning walkway Waterview Reserve
 - 1b_ Along walkway between mana whenua Sanctuary and awa
 - 1c_ Te Auaunga Waterfall
 - 1d_ Phyllis Street Reserve
 - 1e_ Harbutt Reserve

- 2 INTERPRETIVE SIGNAGE**
 - 2a_ Mouth of awa
 - 2b_ Site beside awa where the sound of running water is audible
 - 2c_ Te Auaunga Waterfall (funded)
 - 2d_ Alan Wood Reserve
 - 2e_ Te Whitinga Bridge

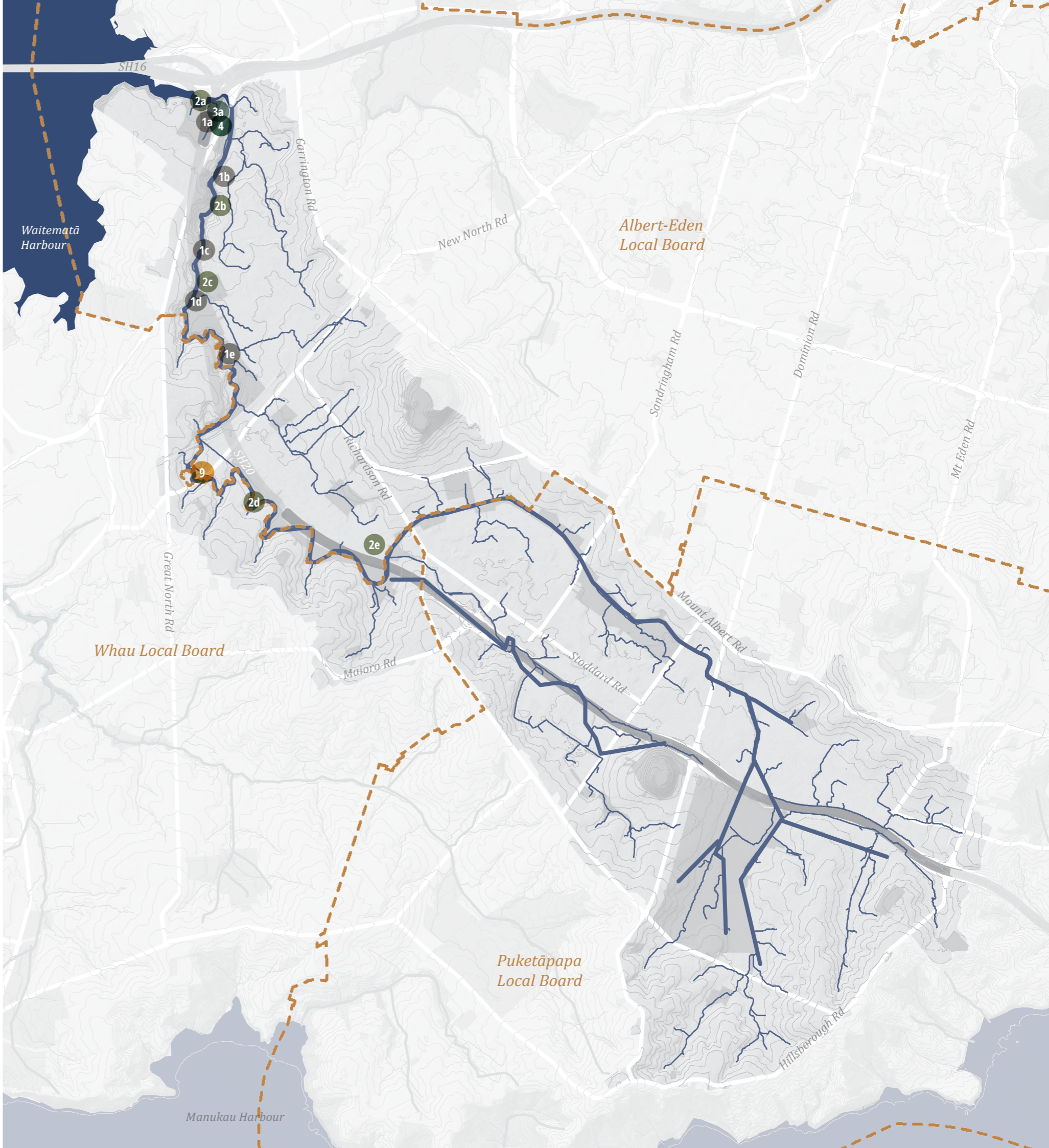
- 3 PAINTING SURFACES**
 - 3a_ Vertical concrete pillars of South-West Motorway

- 4 ART INSTALLATION**
 - Open space Waterview Reserve between South-West Motorway and Great North Road

- 5 MILESTONE MARKERS**
 - Located at defined positions along the walkway and awa (Locations TBC)

- 6 BOLLARD MARKINGS**
 - Installed on existing wayfinding bollards (Locations TBC)

- 9 HORIZONTAL SURFACES**
 - Horizontal surface painted to indicate path of Te Auaunga which runs culverted underneath.



Appendix B

Te Tohu o Te Auaunga Implementation Strategy

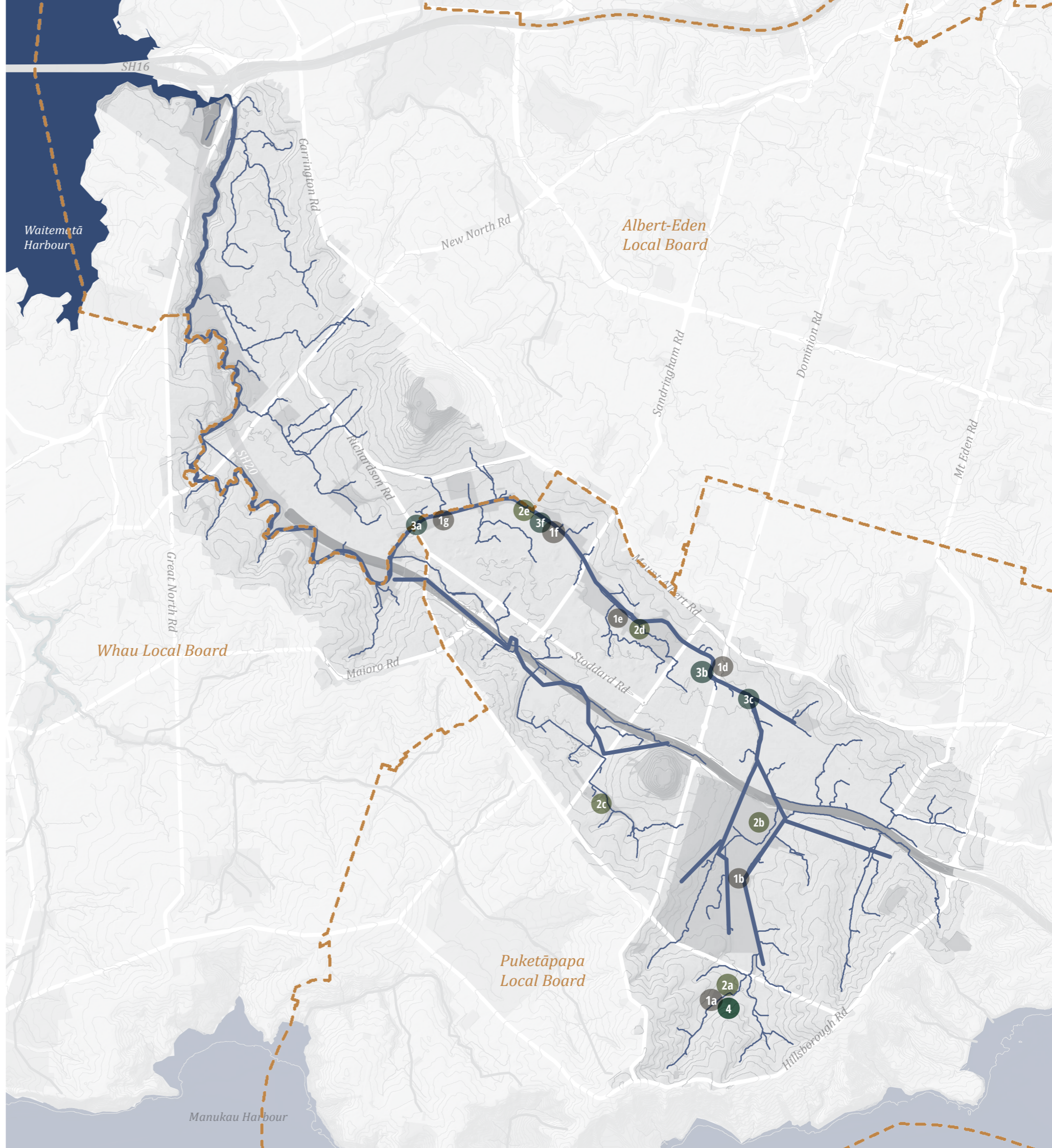
PUKETĀPAPA LOCAL BOARD

REV_3 | February 2019

PUKETĀPAPA IMPLEMENTATION STRATEGY_MAP

KEY

- 1 MAURI STONE**
 - 1a_ Molley Gren Reserve - Site where Te Auaunga first emerges
 - 1b_ Keith Hay Park
 - 1d_ May Road
 - 1e_ War Memorial Park
 - 1f_ Beagle Avenue
 - 1g_ Underwood Park
- 2 INTERPRETIVE SIGNAGE**
 - 2a_ Molley Gren Reserve
 - 2b_ Keith Hay Park
 - 2c_ Freeland Reserve
 - 2d_ War Memorial Park
 - 2e_ Walmsley / Underwood
- 3 PAINTED VERTICAL SURFACES (BRIDGES)**
 - 3a_ Richardson Road -Walmsley Underwood
 - 3b_ Memorial Avenue
 - 3c_ Winstone Road
- 4 ART INSTALLATION**
 - Molley Gren
- 5 MILESTONE MARKERS**
 - Located at defined positions along the walkway and awa (Locations TBC)



Appendix C

Te Tohu o Te Auaunga Implementation Strategy

WHAU LOCAL BOARD

REV_3 | February 2019

WHAU IMPLEMENTATION STRATEGY_MAP

KEY

- 1 MAURI STONE**
Channelised Te Auaunga at Bollard Avenue
- 2 INTERPRETIVE SIGNAGE**
2a_ Lookout at entrance to Te Auaunga Walkway at Methuen Road
2b_ Valonia Reserve
- 4 ART INSTALLATION**
4a_ Terraced walkway in Alan Wood Reserve south of Mokomoko Bridge
4b_ Wetland in Kukuwai Park
- 5 MILESTONE MARKERS**
Located at defined positions along the walkway and awa (Locations TBC)
- 7 POU WHENUA**
Entrance to walkway from Methuen Road
- 8 RIPARIAN PLANTING**
8a_ Channelised Te Auaunga at Bollard Avenue
8b_ Banks along Avondale Motor Camp

