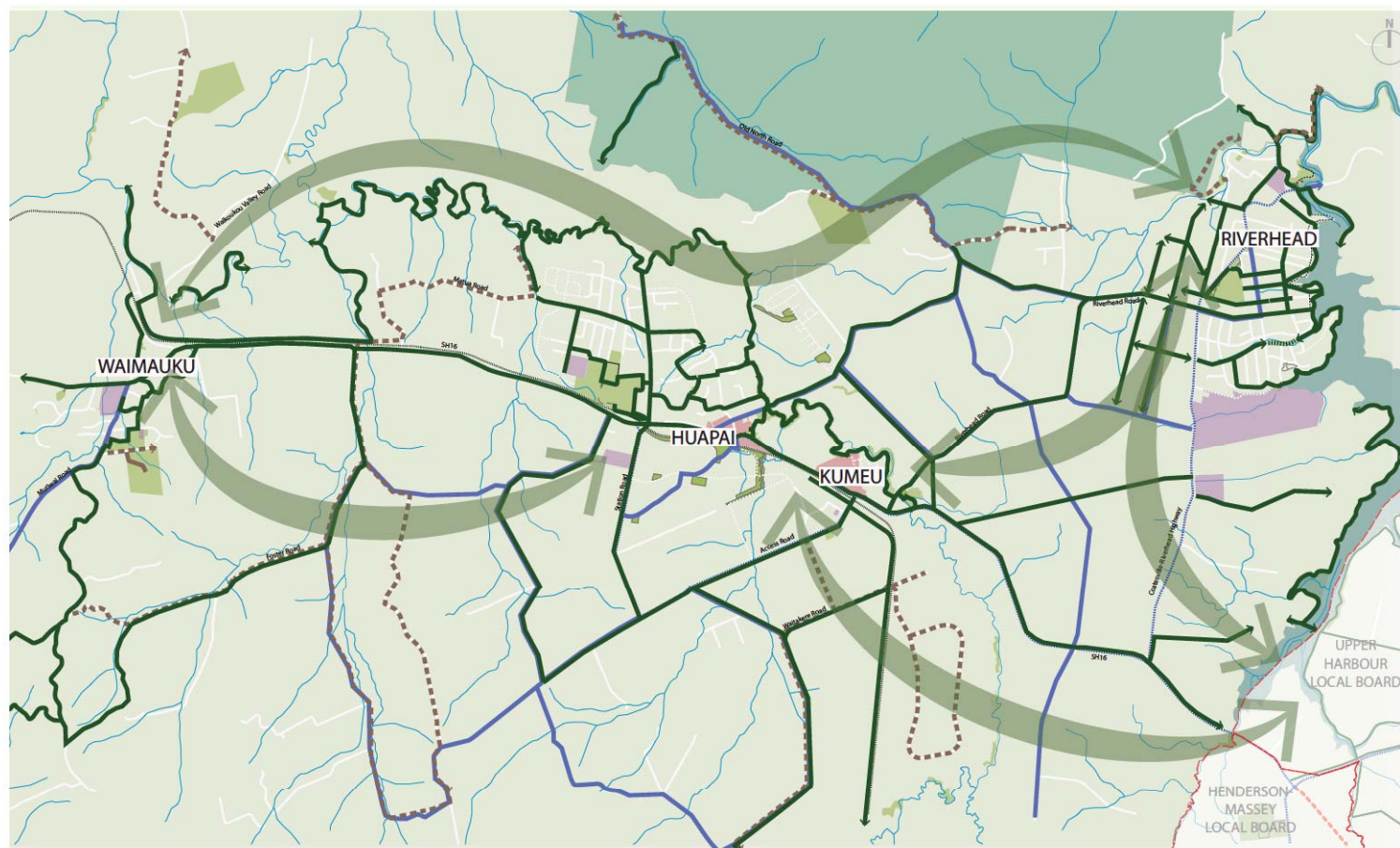

3.0 Greenways Mapping

3.1 Long-term Aspirational Greenways

This map shows the completed greenways vision identified by the Local Board, including both the priority sections as well as longer term routes. This vision is aspirational, and will be reviewed on a regular basis as priority sections are completed, and as other related projects are completed.



Base information

- Schools
- Parks and reserve land
- Rivers and Streams
- Roads
- Rail

Greenway connections

- Proposed greenway (long term aspiration)
- Proposed bridleway
- Proposed dedicated cycleway
- Proposed ecological link

Scale 1:40,000 @ A3

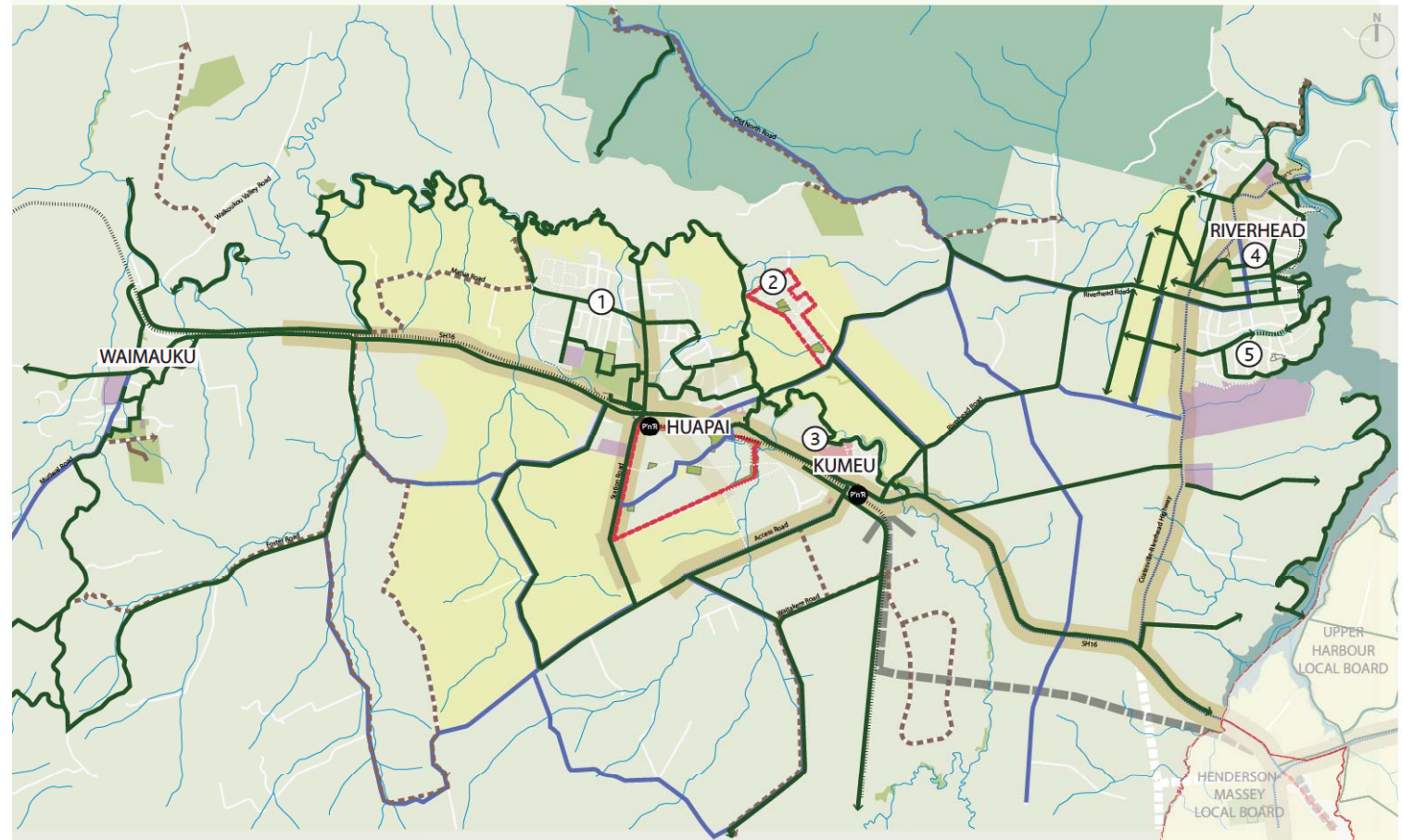
3.2 Long-term Aspirational Greenways with Additional Future Planning Overlays

This map shows the greenways network as it relates to the draft Auckland Cycle Network (ACN), and other long term planning overlays. The other planning overlays shown here include:

- Special Housing Areas (SHA)
- Structure Plan Areas
- Future Urban Zones
- Park and Ride (Auckland Transport)
- Rapid Transport Link (Auckland Transport)
- Road Improvements (Auckland Transport)
- Proposed roads (Auckland Transport, SHA and Structure Plans)

It is worth noting that the Greenways do not often overlap with the ACN's 'connector' routes, as these are predominantly on busy roads, where opportunities for amenity, recreational and ecological improvements are very difficult to achieve. Greenways overlap with the ACN's 'feeder' routes much more closely, however there are no 'feeder' routes planned by Auckland Transport within the study area at present.

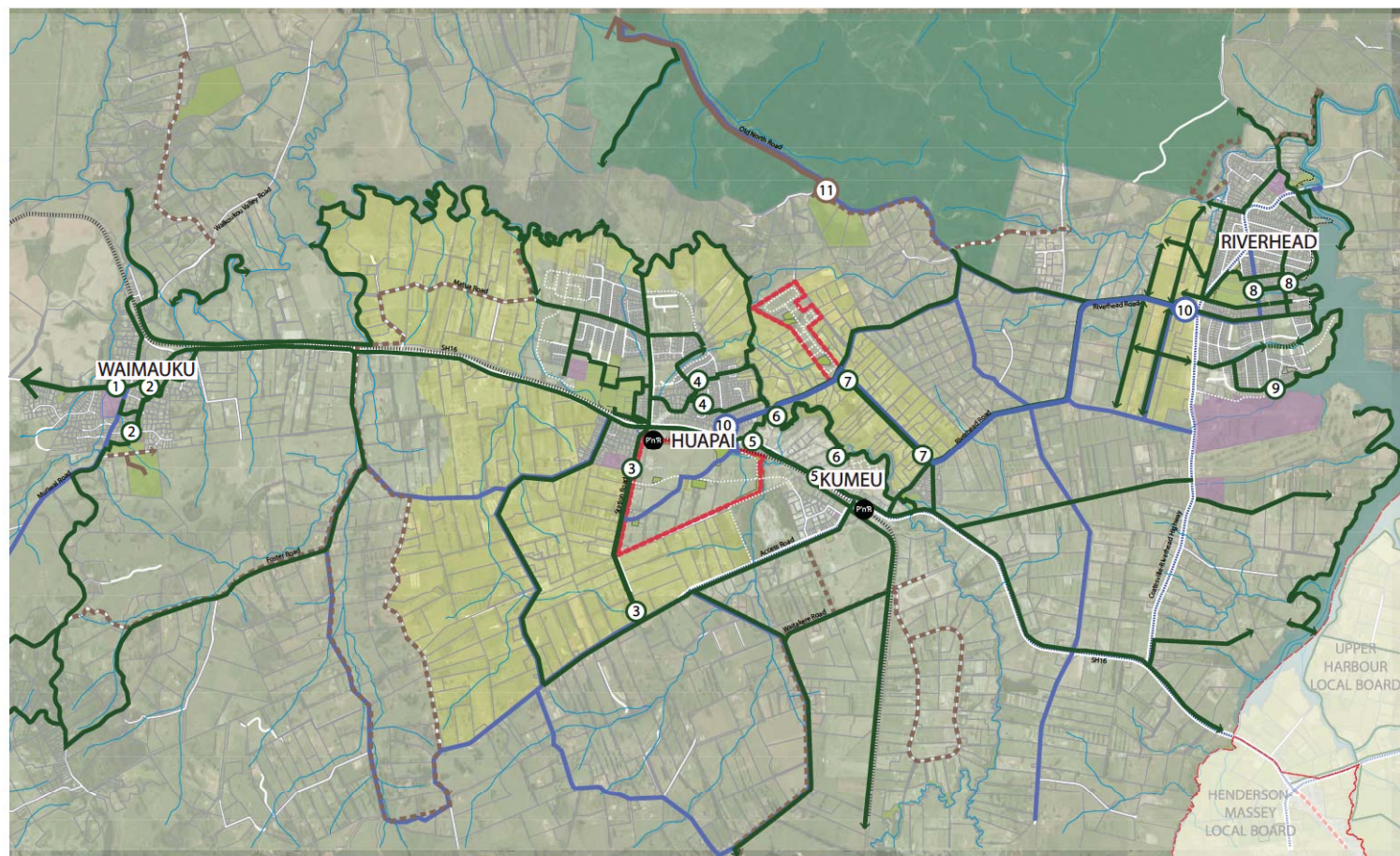
It is also of note that the ACN is currently in draft form, and a process to better align the 'feeder' routes with the various Local Board Greenways plans is currently underway. It is intended that both the ACN and the Greenways plans are 'live' documents, which will be updated at regular intervals. ACN routes shown on this map were current as of May 2016. In AT's definition of a feeder route, these routes are usually on low traffic volume, 'minor' streets where improvements to the streetscape are more practical to achieve.



Base information	Greenway connections	Future Planning Overlays	Auckland Transport Planned Projects	Scale 1:40,000 @ A3
<ul style="list-style-type: none"> Schools Parks and reserve land Rivers and Streams Roads Rail Local board boundary 	<ul style="list-style-type: none"> Proposed greenway (long term aspiration) Proposed bridleway Proposed dedicated cycleway 	<ul style="list-style-type: none"> Special Housing Areas (SHA) Future Urban Zone <p>Structure Plans:</p> <ul style="list-style-type: none"> 1 Huapai North 2 Precinct Plan 3 Kumeu Town Centre 4 Riverhead 5 Riverhead South 	<ul style="list-style-type: none"> Park and Ride Rapid Transport Link (location is indicative) Road Improvements Proposed roads ACN Connector route <p>Note: there are no ACN Feeders or Metro connections within the study area.</p>	

3.3 Proposed Priority Routes

As noted earlier, the greenways plan is a long term vision, and in order to deliver a tangible result, a number of routes have been prioritised for delivery and/or advocacy over the next 3-5 years. Not all of these routes will be delivered, due to financial constraints - but these routes give an indication of where attention will be focused in the short term. Further detail on these routes is contained within Appendix C.

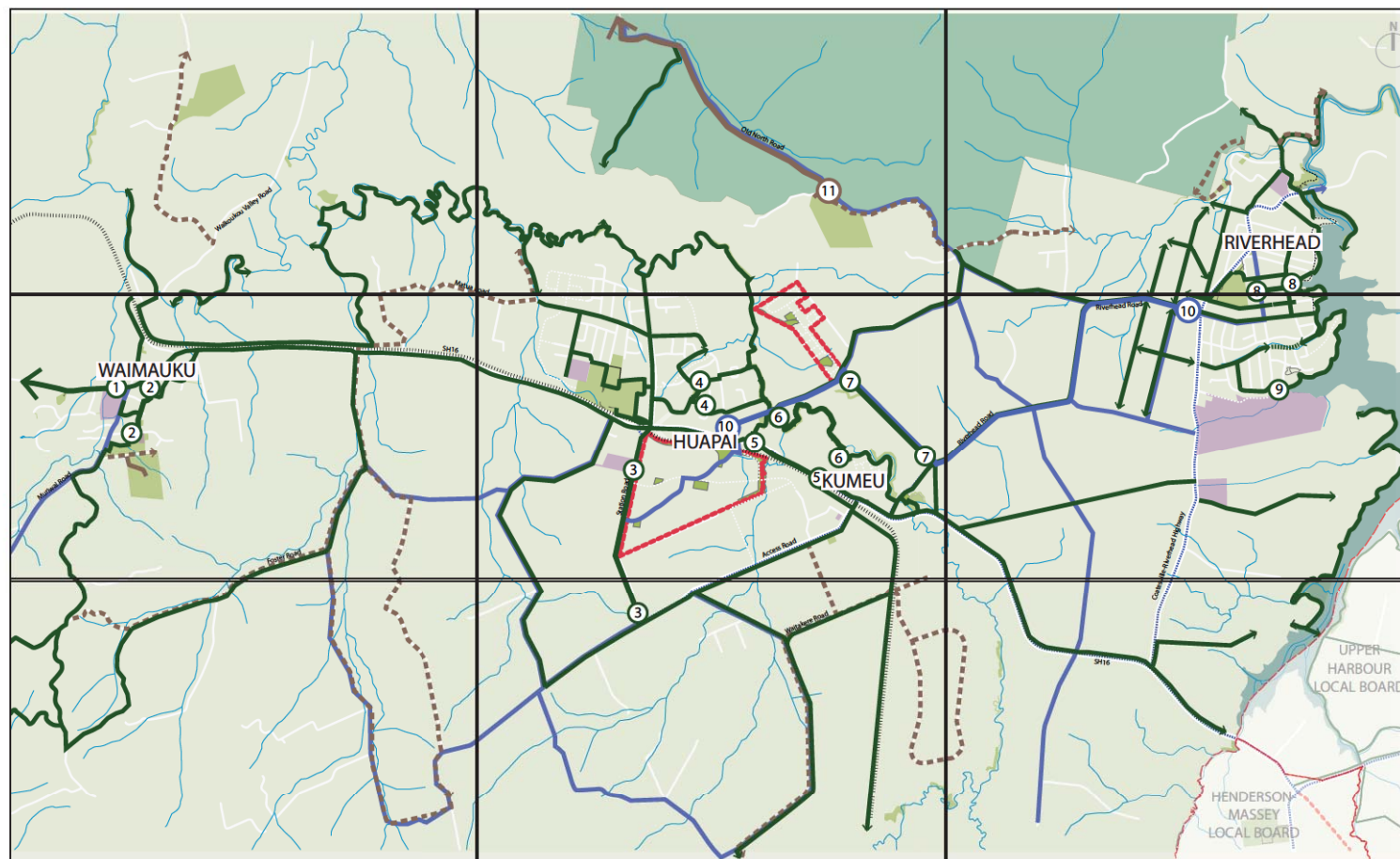


Scale 1:40,000 @ A3

Base information	Greenway connections	Future Planning Overlays
Schools	Proposed greenway (long term aspiration)	Special Housing Areas (SHA)
Parks and reserve land	Proposed bridledway	Future Urban Zone
Rivers and Streams	Proposed dedicated cycleway	Park and Ride
Roads		Proposed roads
Rail		ACN Connector route
Local board boundary		

3.4 Proposed Greenway Network Reference Plan

The network can be viewed at a closer scale on the following pages 24-32. The plan adjacent shows how the network is sectioned.

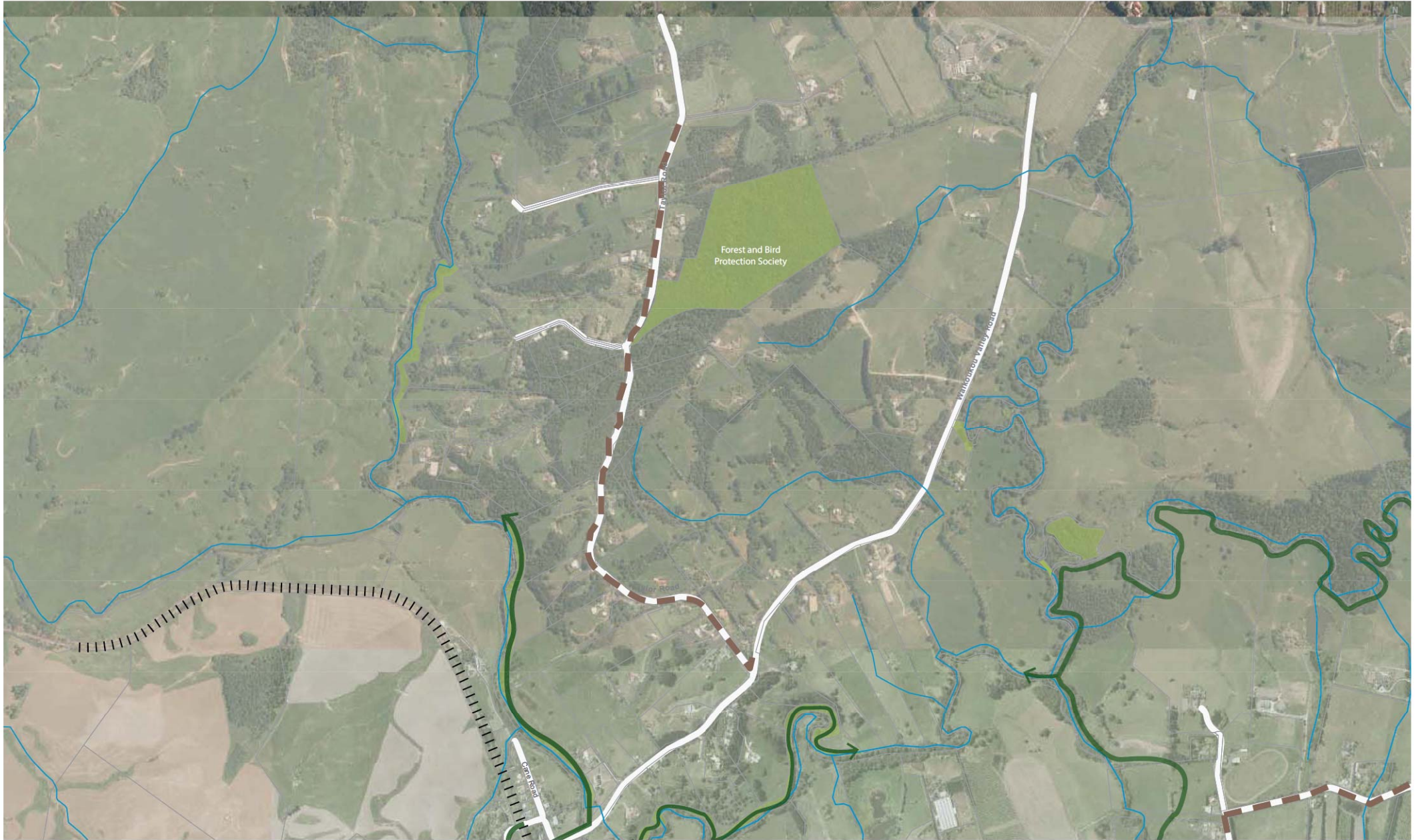


Scale 1:40,000 @ A3

map 1	map 2	map 3
map 4	map 5	map 6
map 7	map 8	map 9

3.5 Proposed Greenway Network Plan

Map 1 of 9



Base information

- Schools
- Rivers and Streams
- Proposed Roads
- Rail
- Parks and reserve land
- Roads
- Rail

Greenway connections

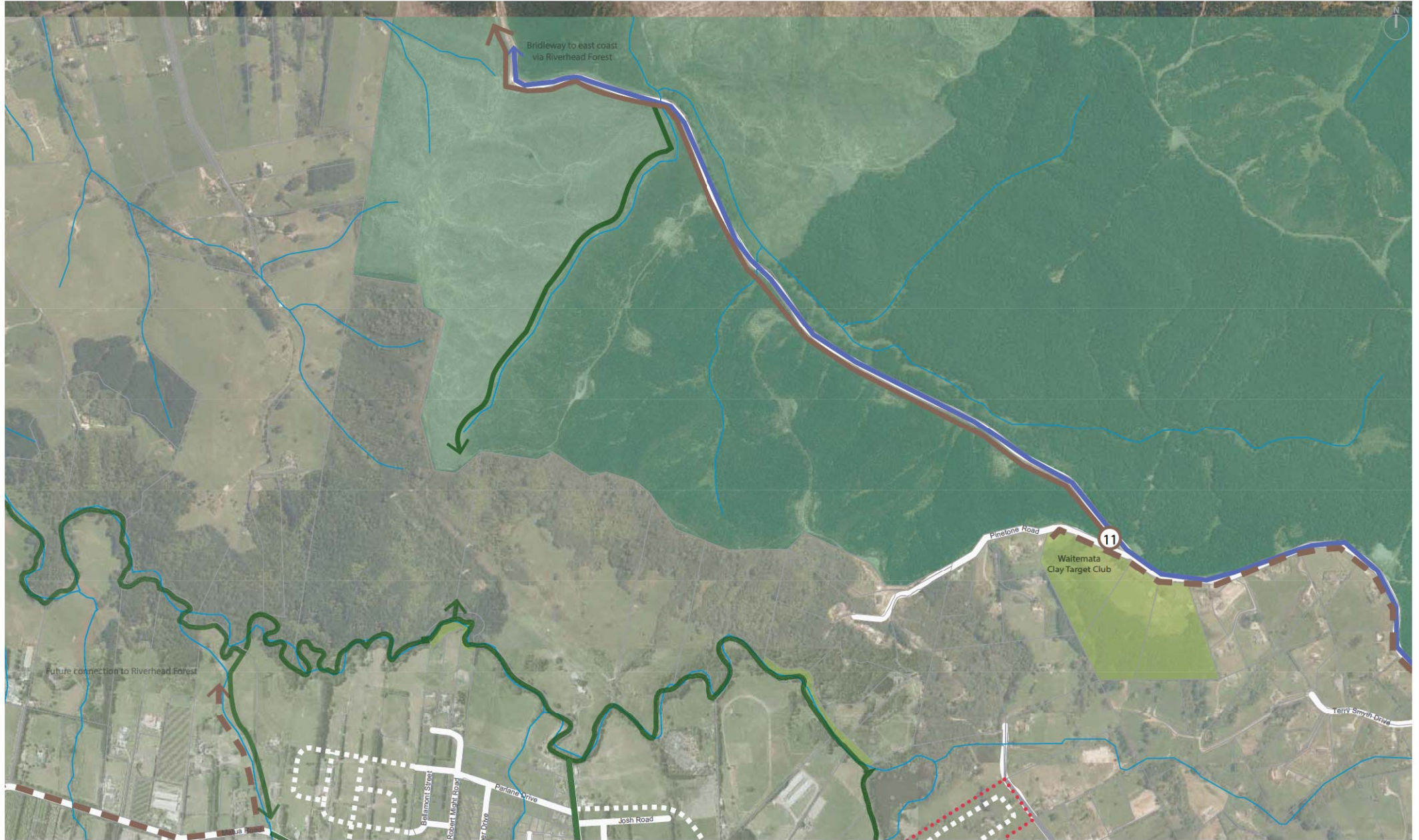
- Special Housing Areas (SHA)
- PnR Park and Ride
- ACN Connector route
- Proposed greenway (long term aspiration)
- Proposed bridleway
- Proposed dedicated cycleway
- Priority greenway project
- Proposed greenway on priority route where there is no current trail / footpath or cycleway

Scale 1:10,000 @ A3

map 1	map 2	map 3
map 4	map 5	map 6
map 7	map 8	map 9

3.6 Proposed Greenway Network Plan

Map 2 of 9



Base information

- Schools
- Rivers and Streams
- Proposed Roads
- Rail
- Parks and reserve land
- Roads
- ACN Connector route

Greenway connections

- Special Housing Areas (SHA)
- Park and Ride
- Proposed greenway (long term aspiration)
- Proposed bridleway
- Proposed dedicated cycleway

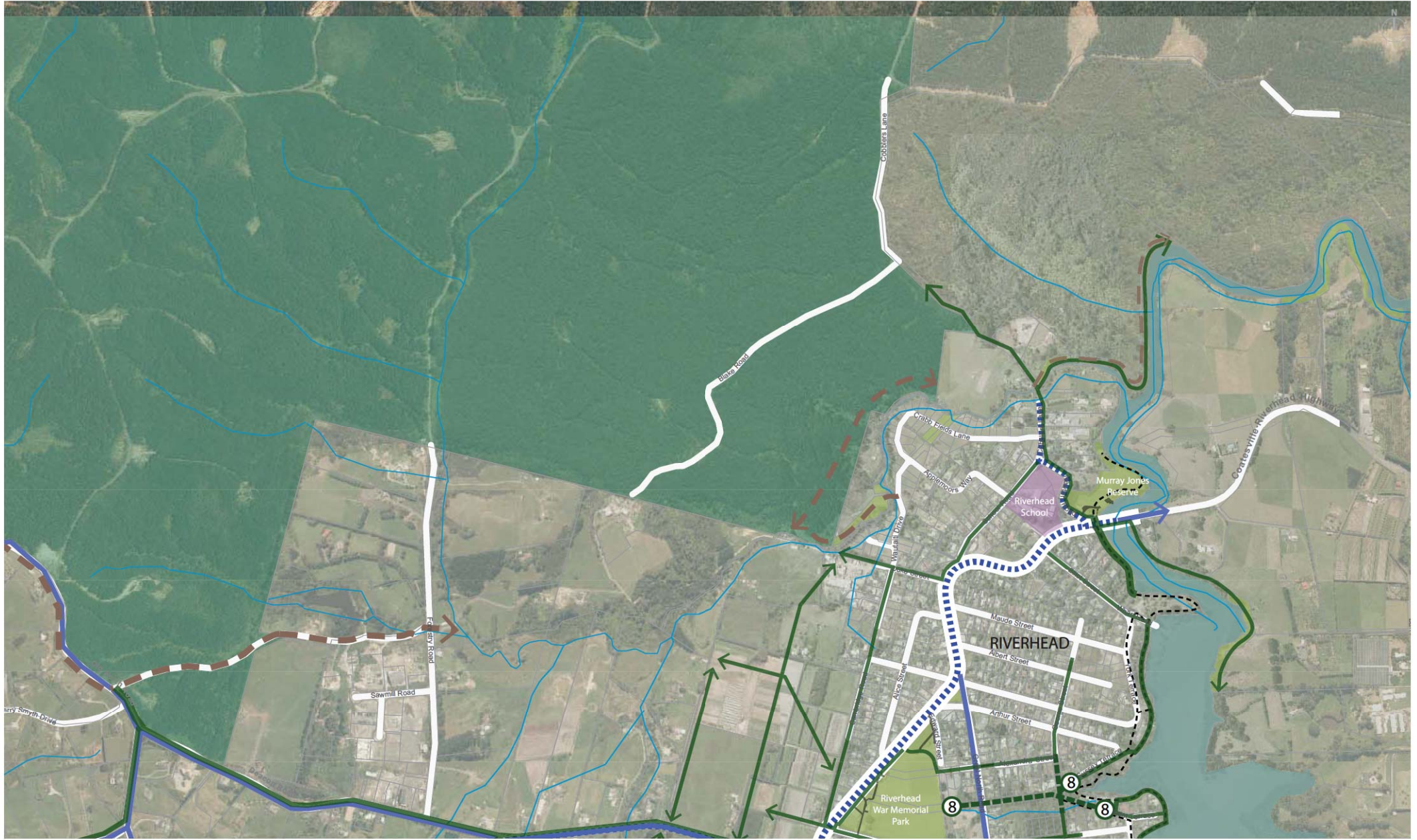
- Priority greenway project
- Proposed greenway on priority route where there is no current trail / footpath or cycleway

Scale 1:10,000 @ A3

map 1	map 2	map 3
map 4	map 5	map 6
map 7	map 8	map 9

3.7 Proposed Greenway Network Plan

Map 3 of 9



Base information

- Schools
- Rivers and Streams
- Proposed Roads
- Rail
- Parks and reserve land
- Roads
- Special Housing Areas (SHA)
- PnR Park and Ride
- ACN Connector route

Greenway connections

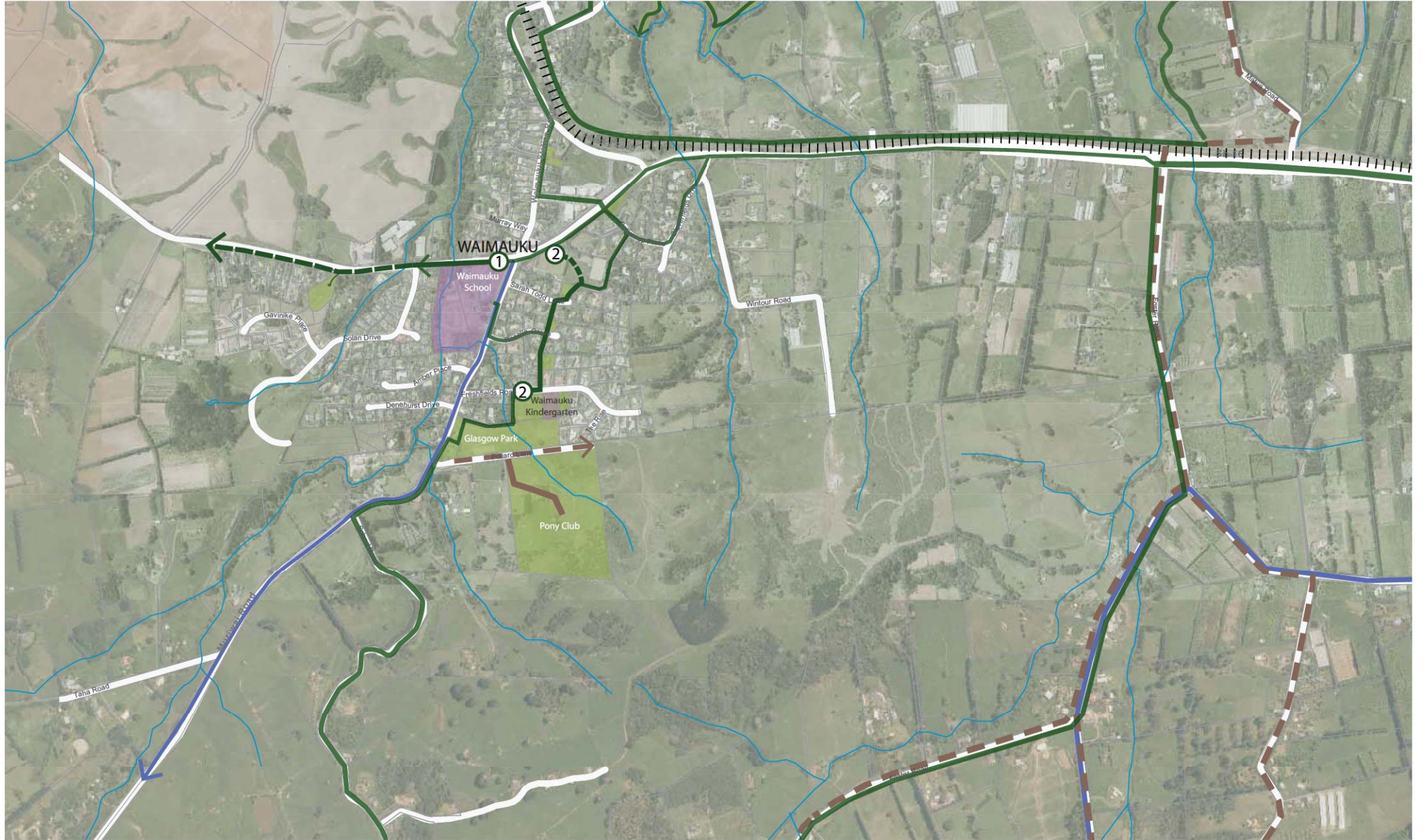
- Proposed greenway (long term aspiration)
- Proposed greenway on priority route where there is no current trail / footpath or cycleway
- Proposed bridledway
- Proposed dedicated cycleway
- 8 Priority greenway project

Scale 1:10,000 @ A3

map 1	map 2	map 3
map 4	map 5	map 6
map 7	map 8	map 9

3.8 Proposed Greenway Network Plan

Map 4 of 6



Base information

- Schools
- Parks and reserve land
- Rivers and Streams
- Roads
- Proposed Roads
- Rail

Greenway connections

- Special Housing Areas (SHA)
- Park and Ride
- ACN Connector route
- Proposed greenway (long term aspiration)
- Proposed bridledway
- Proposed dedicated cycleway

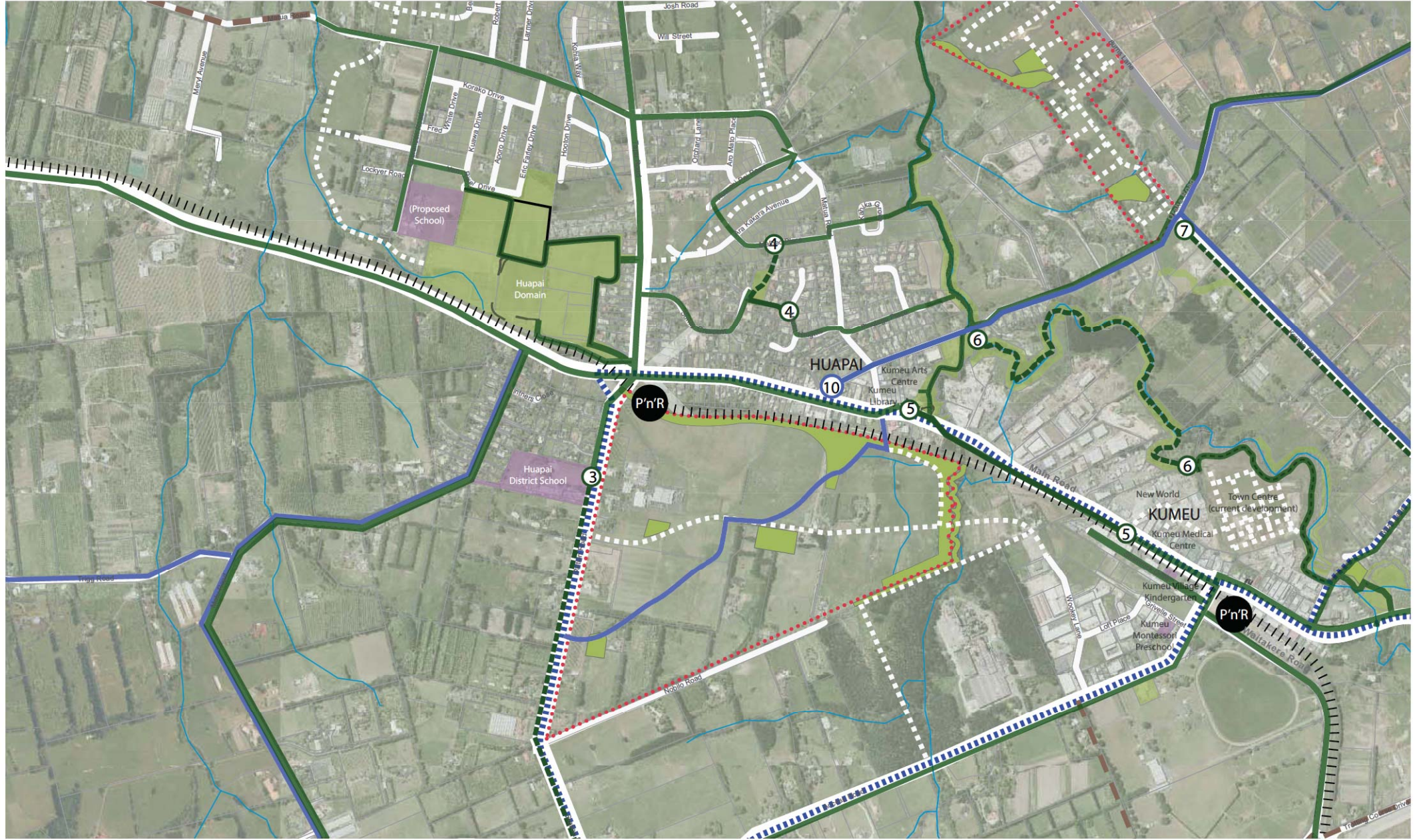
- Priority greenway project
- Proposed greenway on priority route where there is no current trail / footpath or cycleway

Scale 1:10,000 @ A3

map 1	map 2	map 3
map 4	map 5	map 6
map 7	map 8	map 9

3.9 Proposed Greenway Network Plan

Map 5 of 9



Base information

- Schools
- Parks and reserve land
- Rivers and Streams
- Roads
- Proposed Roads
- Rail

Greenway connections

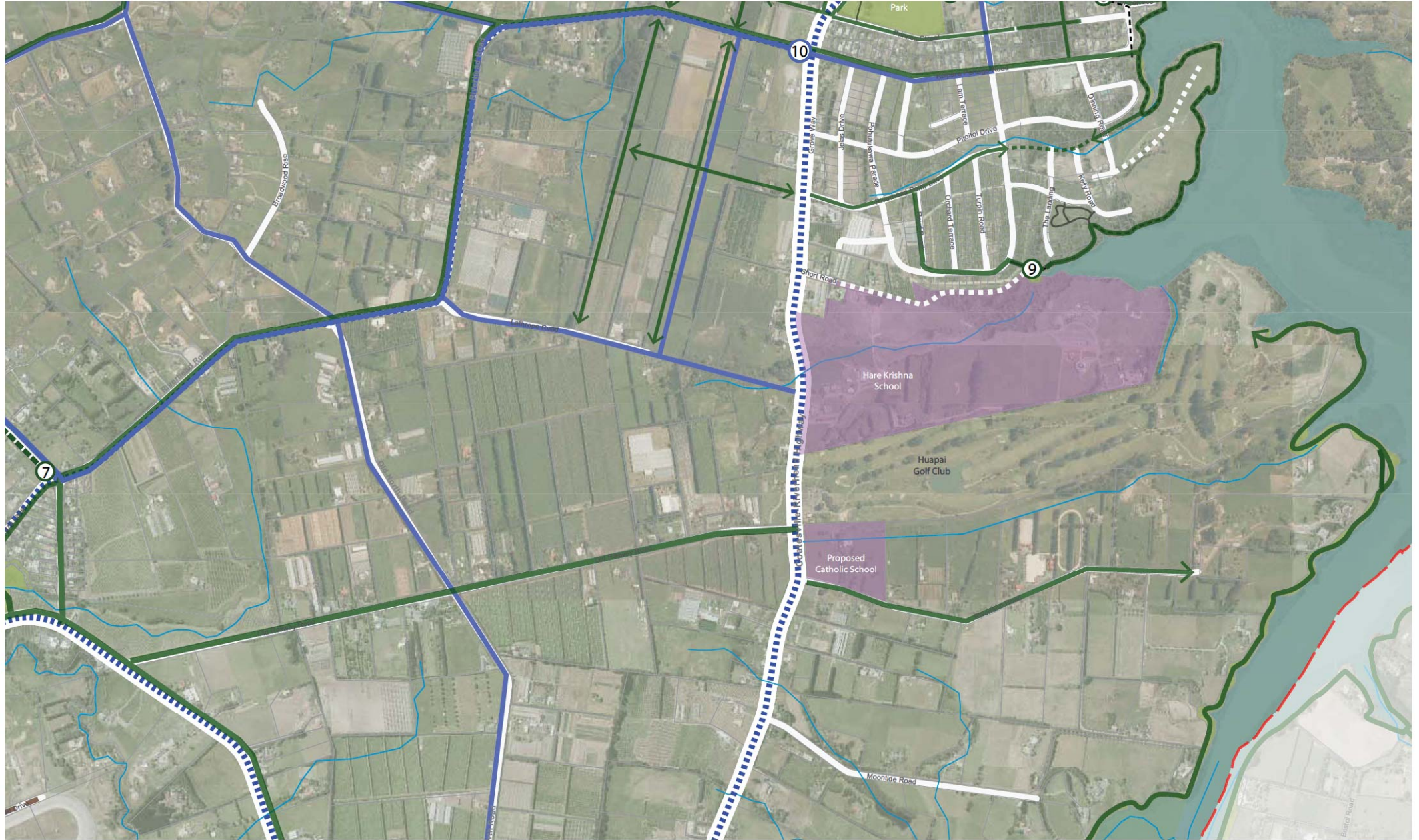
- Special Housing Areas (SHA)
- Park and Ride
- Proposed greenway (long term aspiration)
- Proposed bridledway
- Proposed dedicated cycleway
- Priority greenway project
- Proposed greenway on priority route where there is no current trail / footpath or cycleway
- ACN Connector route

Scale 1:10,000 @ A3

map 1	map 2	map 3
map 4	map 5	map 6
map 7	map 8	map 9

3.10 Proposed Greenway Network Plan

Map 6 of 9



Base information

- Schools
- Parks and reserve land
- Rivers and Streams
- Roads
- Proposed Roads
- Rail

- Special Housing Areas (SHA)
- PnR Park and Ride
- ACN Connector route

Greenway connections

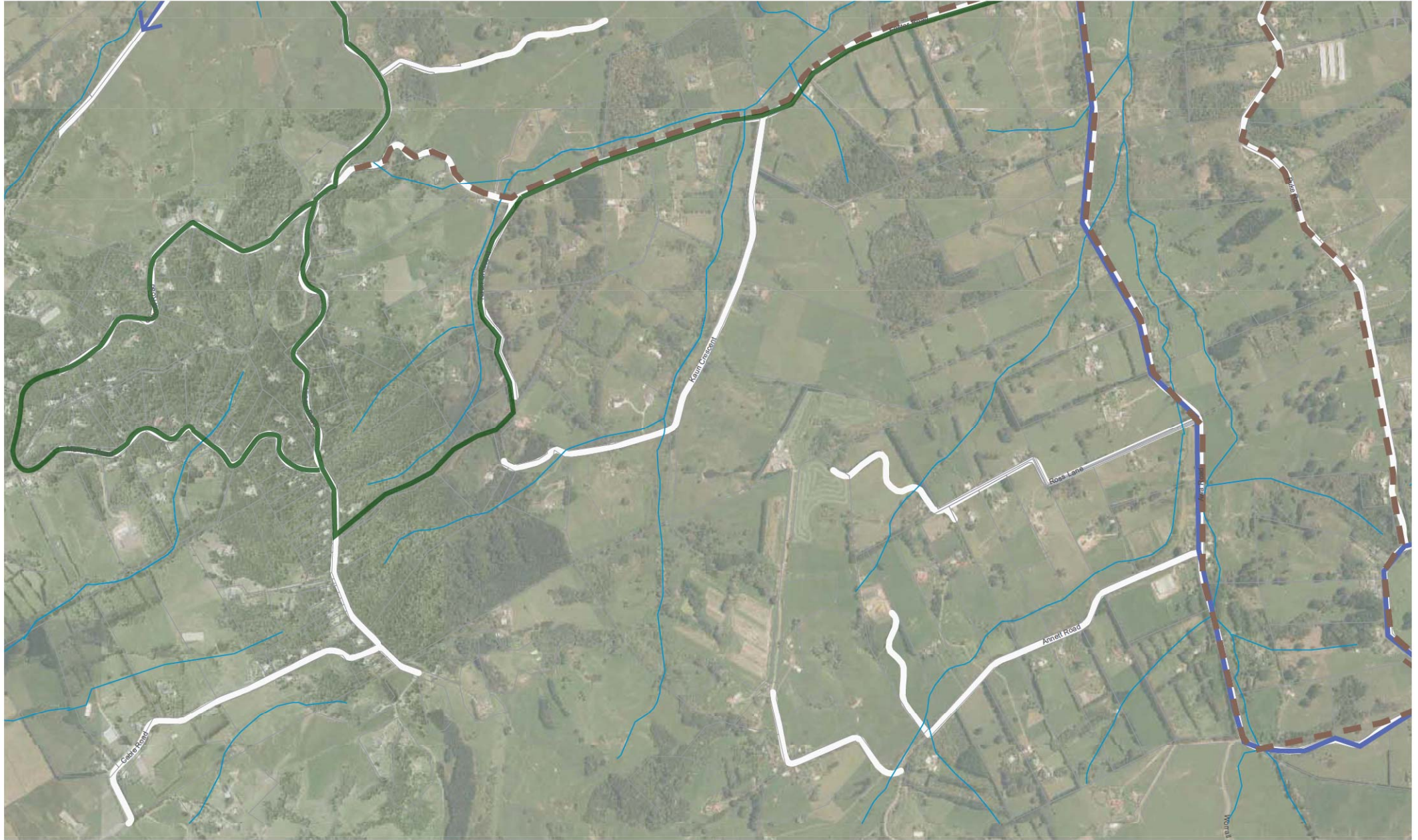
- Proposed greenway (long term aspiration)
- Proposed greenway on priority route where there is no current trail / footpath or cycleway
- Proposed dedicated cycleway
- Priority greenway project

Scale 1:10,000 @ A3

map 1	map 2	map 3
map 4	map 5	map 6
map 7	map 8	map 9

3.11 Proposed Greenway Network Plan

Map 7 of 9



Base information

- Schools
- Proposed Roads
- Parks and reserve land
- Roads
- Rail

Greenway connections

- Special Housing Areas (SHA)
- Proposed greenway (long term aspiration)
- Proposed bridledway
- Proposed dedicated cycleway
- Park and Ride
- Priority greenway project
- Proposed greenway on priority route where there is no current trail / footpath or cycleway
- ACN Connector route

Scale 1:10,000 @ A3

map 1	map 2	map 3
map 4	map 5	map 6
map 7	map 8	map 9

3.12 Proposed Greenway Network Plan

Map 8 of 9



Base information

- Schools
- Rivers and Streams
- Proposed Roads
- Parks and reserve land
- Roads
- Rail

Greenway connections

- Special Housing Areas (SHA)
- Park and Ride
- ACN Connector route
- Proposed greenway (long term aspiration)
- Proposed bridledway
- Proposed dedicated cycleway

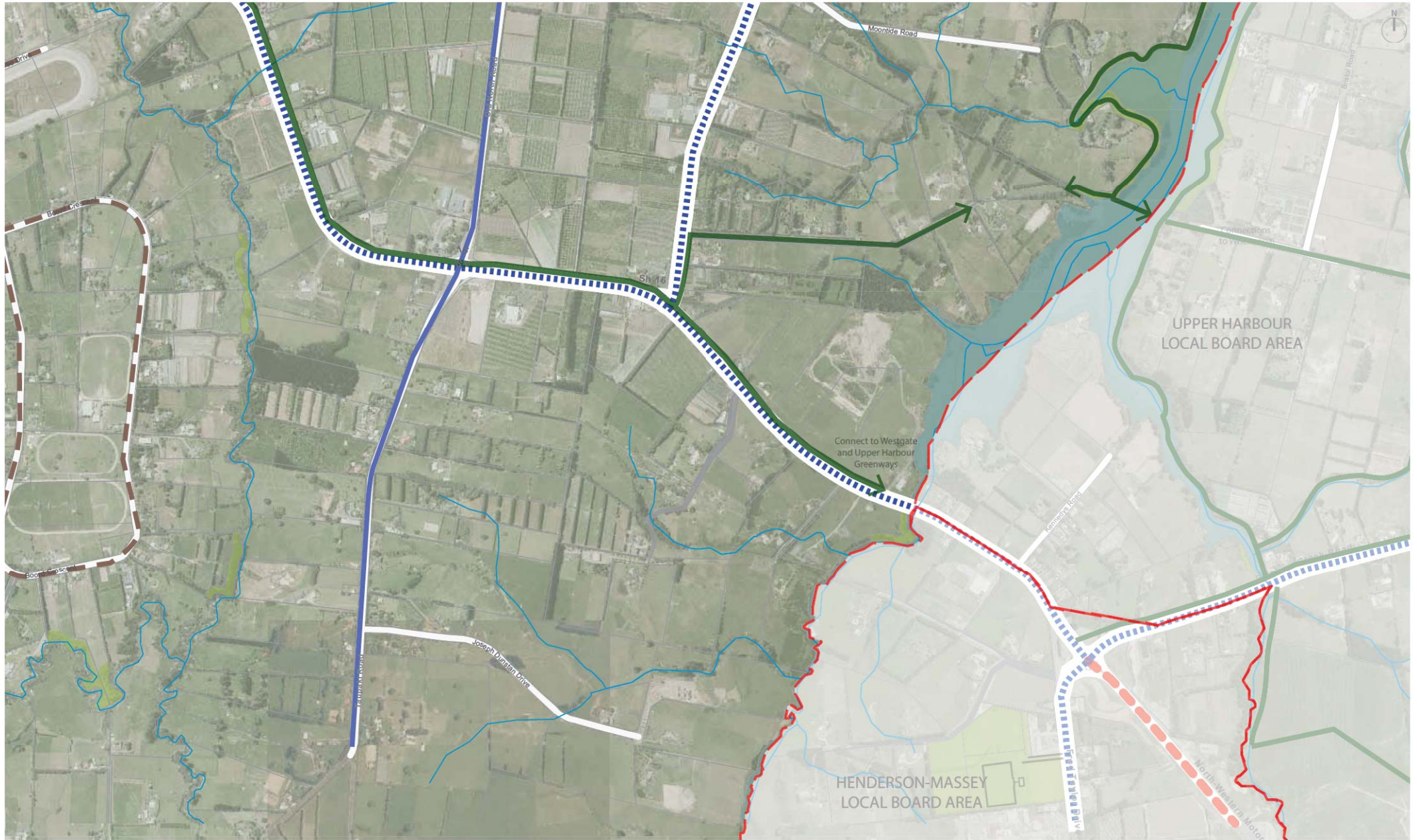
- Priority greenway project
- Proposed greenway on priority route where there is no current trail / footpath or cycleway

Scale 1:10,000 @ A3

map 1	map 2	map 3
map 4	map 5	map 6
map 7	map 8	map 9

3.13 Proposed Greenway Network Plan

Map 6 of 9



Base information

- Schools
- Rivers and Streams
- Proposed Roads
- Roads
- Rail

Greenway connections

- Special Housing Areas (SHA)
- Proposed greenway (long term aspiration)
- Proposed bridleway
- Proposed dedicated cycleway
- ACN Connector route

- Priority greenway project
- Proposed greenway on priority route where there is no current trail / footpath or cycleway

Scale 1:10,000 @ A3

map 1	map 2	map 3
map 4	map 5	map 6
map 7	map 8	map 9



View over Riverhead, the Riverhead Forest top right.