

Waiheke Local Board Workshop Agenda

Date of Workshop: Wednesday 13 March 2024

Time: 10:30

Location: Waiheke Local Board, 10 Belgium Street; MS Teams

Time	Workshop Item	Governance role	Purpose	Presenter(s)	Proposed Outcome(s)
10:30	Item 1 AT monthly update Attachment Memo	Keeping informed	Review progress with projects	Richard LaVille <i>Waiheke Manager</i>	Members will be updated on various projects across the island.
11:30	Item 2 Auckland Council approach to NPS – Freshwater Management (NPS-FM) discussion Attachment Setting our Direction for improving freshwater in Tāmaki Makaurau Auckland; National Policy Statement for Freshwater Management Auckland consultation document, November 2023	Keeping informed	Informal dissemination	Lorraine Gropper <i>Local Board Advisor</i>	Members will discuss the consultation document and options for providing feedback. Feedback will be formally adopted at the March business meeting.
12:30	Lunch Break				

Time	Workshop Item	Governance role	Purpose	Presenter(s)	Proposed Outcome(s)
13:00	Item 3 LBAP5 Performance measures Attachment Presentation	Local initiative / preparing for specific decisions	Provide direction on preferred approach	Audrey Gan <i>Lead Financial Advisor</i>	To present targets for performance measures to the local board for discussion and feedback
14:00	Item 4 Harbourmasters Building lease update Attachment Memo	Keeping informed	Informal dissemination	Emlyn Lloyd <i>Commercial Property Manager</i>	To inform and request feedback from the Waiheke Local Board on the proposal to grant a renewal and extend the term of the commercial lease to the existing operator, Harbourmasters Limited (t/a Ahipoa), for the use of the premises at 10 Ocean View Road, Matiatia (Harbourmasters Building), Waiheke.

This workshop session and material is required to be confidential.

Reason: The public conduct of the part of the workshop would be likely to result in the disclosure of information for which good reason for withholding exists under section 7.

Particular interest(s) protected:

LGOIMA s7(2)(b)(ii) - The withholding of the information is necessary to protect information where the making available of the information would be likely unreasonably to prejudice the commercial position of the person who supplied or who is the subject of the information.

LGOIMA s7(2)(i) - The withholding of the information is necessary to enable any local authority holding the information to carry on, without prejudice or disadvantage, negotiations (including commercial and industrial negotiations).

Waiheke Local Board Workshop Proceedings

Workshop record of the Waiheke Local Board held in person and via Teams on Wednesday 13 March 2024, commencing at 10:30am

Member attendance:

Cath Handley (Chair)	Bianca Ranson (Deputy)	Kylee Matthews	Robin Tucker	Paul Walden
Present	Present	Present	Present	Absent

Time	Workshop Item	Presenter(s)	Summary of Discussion
10:30	Item 1 AT monthly update Attachment Memo	Richard LaVille <i>Waiheke Manager</i>	Waiheke Area Manager for AT presented to members on the status of the following subjects: The Esplanade, koiwi sites and removal of the boat waste in Anzac Bay after a large vessel burnt on the shoreline.
11:30	Item 2 Feedback items Auckland Council approach to NPS – Freshwater Management (NPS-FM) discussion Attachment Setting our Direction for improving freshwater in Tāmaki Makaurau Auckland; National Policy Statement for Freshwater Management Auckland consultation document, November 2023	Janine Geddes <i>Senior Advisor</i>	Senior advisor presented two items for feedback that will come to the March business meeting: Auckland Council approach to NPS – Freshwater Management (NPS-FM) and the Draft Government Policy Statement on Land Transport. Feedback will be formally adopted at the March business meeting.
12:30	Lunch Break		

Time	Workshop Item		Presenter(s)	Summary of Discussion
13:00	Item 3	LBAP5 Performance measures Attachment Presentation	Audrey Gan <i>Lead Financial Advisor</i>	Lead Financial Advisor presented proposed targets for performance measures to the local board for discussion and feedback. Finalised performance measures will be adopted as part of the Local Board Agreement in June 2024.
14:00	Item 4	Harbourmasters Building lease update Attachment Memo	Emlyn Lloyd <i>Commercial Property Manager</i>	Commercial Property Manager presented members the proposal to grant a renewal and extend the term of the commercial lease to the existing operator, Harbourmasters Limited (t/a Ahipoa), for the use of the premises at 10 Ocean View Road, Matiatia (Harbourmasters Building), Waiheke. Feedback from members will be finalised at a future business meeting.
<p>This workshop session and material is required to be confidential.</p> <p>Reason: The public conduct of the part of the workshop would be likely to result in the disclosure of information for which good reason for withholding exists under section 7.</p> <p>Particular interest(s) protected: LGOIMA s7(2)(b)(ii) - The withholding of the information is necessary to protect information where the making available of the information would be likely unreasonably to prejudice the commercial position of the person who supplied or who is the subject of the information.</p> <p>LGOIMA s7(2)(i) - The withholding of the information is necessary to enable any local authority holding the information to carry on, without prejudice or disadvantage, negotiations (including commercial and industrial negotiations).</p>				

Governance Role

1. Accountability to the public
2. Engagement
3. Input to regional decision-making
4. Keeping informed
5. Local initiative / preparing for specific decisions
6. Oversight and monitoring
7. Setting direction / priorities / budget

Role of Workshop:

- (a) Workshops do not have decision-making authority.
- (b) Workshops are used to canvass issues, prepare local board members for upcoming decisions and to enable discussion between elected members and staff.
- (c) Workshops are not open to the public as decisions will be made at a formal, public local board business meeting.
- (d) Members are respectfully reminded of their Code of Conduct obligations with respect to conflicts of interest and confidentiality.
- (e) Workshops for groups of local boards can be held giving local boards the chance to work together on common interests or topics

Memorandum

To: Waiheke Local Board
From: Richard La Ville, Operations Manager Waiheke & Gulf Islands Airfields
Date: 13 March 2024
Subject: **AT monthly update 10.30am – 11.30am**

Purpose:

This workshop is to briefly update the local board on a selection of transport related topics.

Auckland Transport operations and projects:

Activity	New updates
Koiwi sites at Surfdale and Omiha	<p>Contract with Tonkin & Taylor to undertake seawall design and resource consent requirements for two sites at The Esplanade, Surfdale and McMillan Road, Omiha.</p> <p>Site visit with Chris Bailey, Grant Pearce (T&T) on Monday 11th March 2024.</p>
The Esplanade, Surfdale	<p>Contract with PTM Consultants to undertake the Statement of Proposal (SOP) for the Esplanade pedestrian mall.</p> <p>The project/proposal is to create a pedestrian and cycle friendly environment closing the unsealed section of this road to vehicular traffic (except for emergency services).</p> <p>The project is now to be progressed through external consultation and then for formal consideration by the AT Traffic Control Committee (TCC) for adoption and implementation.</p> <p>PTM are very familiar with this type of work having recently completed the pedestrian malls for five locations in Auckland. The company also undertook preparatory work on this specific site in early 2023.</p> <p>For discussion</p> <ul style="list-style-type: none">- Public consultation (1 month est.)- Consultation channels.
Belgium Street, Ostend	Bus stop relocation - signs and markings
Anzac Bay	<p>Boat removal from foreshore and clean up excess debris.</p> <p>Unlawful encroachment built on road reserve.</p> <p>Burnt out vessel is on road reserve with access only from the water. Contractor confirming whether they can bring in barge, or whether materials to be carried out to Wharf Rd.</p> <p>Additional vessel nearer boat ramp with people living on it – AC Compliance confirmed to deal with this.</p>

Memorandum

Koiwi sites – The Esplanade, Surfdale and McMillan Rd, Omiha



Hooks Lane, Surfdale

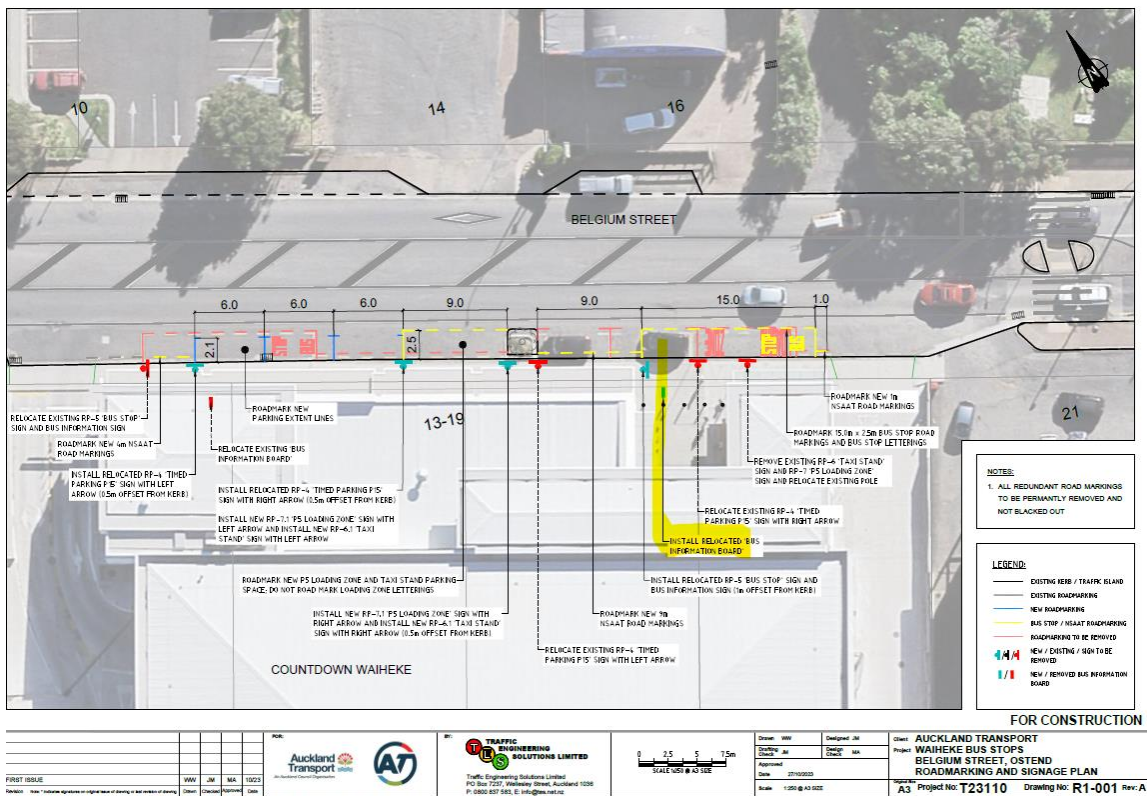


Memorandum

The Esplanade, Surfdale



Belgium Street, Ostend

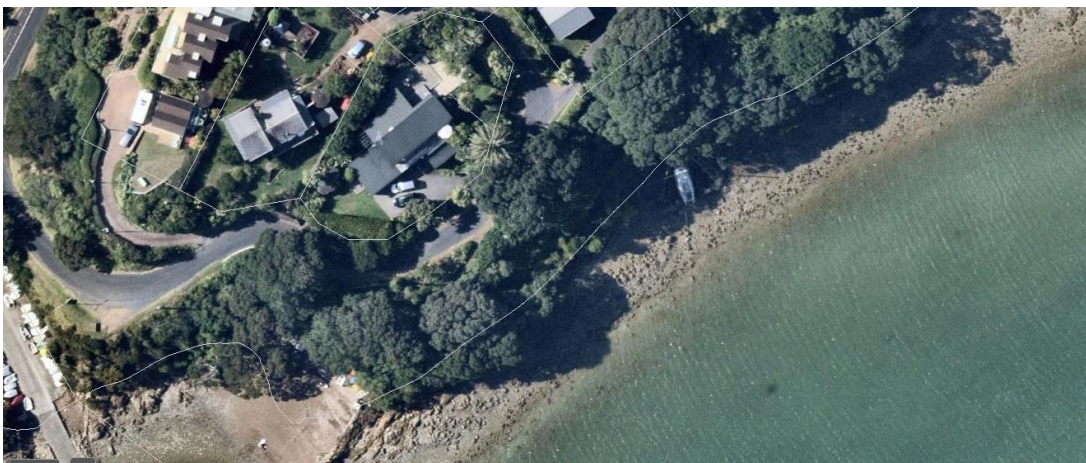


Memorandum

Anzac Bay



Additional vessel location



LBAP 5 – local performance measures recommendations

Audrey Gan

Waiheke



Purpose of today's workshop

Seek local board feedback on recommended performance measures for inclusion in your draft Local Board Agreement 2024/2025

Next steps:

- Staff recommend targets based on work programme direction
- Actual performance reported against target in Annual Report 2024/2025





Agenda

- Recap of where we left off in October/November 2023
- Briefing on historical measures and why they are discontinued
- Presenting list of new core measures for major local services
- Presenting list of recommendations for tailored local measures (per LB direction/feedback)
- Next steps to LBA adoption



Recap of October/November workshop (LBAP 2)

A new approach to local board performance measures:

- to improve performance transparency and accountability
- Better enable the public to assess delivery against identified levels of service and community outcomes
- Empower local boards to set service levels for locally funded services

Collectively, local boards provided over 160 pieces of feedback for staff to develop more meaningful measures

Staff have assessed and developed a set of recommended measures for local boards, which will be presented today.



Historical measures – summary of change

Measure wording	Status	Future state
The percentage of Empowered Communities activities that are community led	Replaced	No longer available
The percentage of Empowered Communities activities that build capacity and capability to assist local communities to achieve their goals	Replaced	No longer available
The percentage of park visitors who are satisfied with the overall quality of sportsfields	Replaced	Available annually*
The percentage of users who are satisfied with the overall quality of local parks	Replaced	Available annually*
The percentage of residents who visited a local park in the last 12 months	Replaced	Available annually*
The number of attendees at council-led community events	Replaced	Available on request ²
The number of visits to library facilities	Continue	Core measure

*results are from the Annual Auckland Residents Survey

²Available through departmental reporting channels



Historical measures – summary of change

Measure wording	Status	Future state
Percentage of Aucklanders that feel their local town centre is safe - day time	Discontinued	Available annually*
Percentage of Aucklanders that feel their local town centre is safe - night time	Discontinued	Available annually*
The percentage of local programmes, grants and activities that respond to Māori aspirations	Discontinued	No longer available
The number of internet sessions at libraries (unique sessions over public computing or public WIFI networks)	Discontinued	Available on request ²
The percentage of art facilities, community centres and hire venues network that is community led	Discontinued	Available on request ²
The number of participants in activities at art facilities, community centres and hire venues	Discontinued	Available on request ²
The percentage of arts, and culture programmes, grants and activities that are community led	Discontinued	No longer available
The percentage of attendees satisfied with a nominated local community event	Discontinued	No longer available
Percentage of customers satisfied with the quality of library service delivery	Discontinued	Available on request ²
The customers' Net Promoter Score for Pool and Leisure Centres	Discontinued	Available on request ²

*Annual Auckland Residents Survey

²Available through departmental reporting channels



Historical measures – summary of change

Measure wording	Status	Future state
The percentage of Business Associations meeting their Business Improvement District (BID) Partnership Programme targeted rate grant agreement obligations	Continue	Minor wording update
The percentage of low carbon or sustainability projects that have successfully contributed towards local board plan outcomes.	Replaced	Work programme reporting
The percentage of local water quality or natural environment improvement projects that have successfully contributed towards local board plan outcomes	Replaced	Work programme reporting
The percentage of local waste minimisation projects that have successfully contributed towards local board plan outcomes	Replaced	Work programme reporting



Local Board Core measures – community only

These core measures are for the most significant local community services identified and to be continued in the next Long-term Plan 2024-2034.

The associated measure(s) and targets will be included in your local board agreements if the service is funded by your local board.

The Long-term Plan consultation material included local board level targets and prior year comparatives - these were indicative and for benchmarking purposes to inform public consultation. Final targets will be agreed with local boards through Local Board Agreement process.



Local Board Core measures – Community only

Service	Measure wording	Measure description
<i>Enable a range of choices to access community services and recreation opportunities</i>		
Libraries	Library opening hours service uptime	Measuring accessibility of the service to customers at LB funded levels
	The number of visits to library facilities	Physical visits through council libraries
Pool and Leisure centres	Pool & Leisure centres main functions & facilities opening hours service uptime	Measuring accessibility of the service to customers at LB funded levels
	Pool and Leisure centre physical visits	Physical visits at Pool and Leisure sites, regardless of operator
Provision of community facilities	Community Facilities in poor or very poor condition	Auckland Council asset condition rating, condition 4 and 5.



Local Board Core measures – Community only

Service	Measure wording	Measure description
<i>Provide urban green spaces (local parks, paths and Ngahere) and access to the coast</i>		
Local Park operational maintenance	The percentage of quality audits achieved in local parks	Full Facilities maintenance quality audits for local parks which meet contractual service standards.
Provision of open space assets	Open space assets in poor or very poor condition	Auckland Council asset condition rating, condition 4 and 5.
Urban Ngahere canopy planting	Urban Ngahere Street planting Programme (number of trees)*	Planting done under the Urban Ngahere programme

**This measure is in the Long-term Plan consultation material but may be further refined and/or moved to tailored measures*



Local tailored measures – all local activities

Staff have considered the following key factors during the development of recommended tailored measures.

- Local Board feedback/direction
- Prioritising common themes across multiple boards
- Relevancy to investment levels in local board work programmes
- Low resourcing/cost requirement to measure
- Reliability of data collection/methodology
- Focusing on the ‘main’ service level indicator (noting there are many indicators for service levels)



LB feedback table – local community

What did the Local Board say?	Progressed	Why not?
Support local initiatives including volunteer groups, that enhance connection and diversity, reduce isolation, and promote community development via the <u>community grants programme</u> , endorsements and other activities	Maybe	There are some community delivery measures suggested
Support and empower our diverse communities by providing them with opportunities to engage with the local board and to apply for contestable funding via the <u>community grants programme</u>	No	Insufficient resourcing to explore at this stage
Implement the grow stage of the Waiheke Ngahere (Forest) Strategy to increase canopy cover, retain significant trees and improve Waiheke Island's carbon footprint and encourage carbon sequestration	Yes	
Support community-led housing initiatives that align with the reviewed Waiheke Housing Strategy	No	Insufficient resourcing to explore at this stage
Support community-led healthy homes projects for low-income residents to create warm, dry, energy efficient homes	No	Insufficient resourcing to explore at this stage
Support Piritahi Marae in its aspirations to further develop as a local community centre	No	Insufficient resourcing to explore at this stage



LB feedback table – local environment

What did the Local Board say?	Progressed	Why not?
Support initiatives which protect, restore, and enhance the island's indigenous biodiversity including sand dune restoration and planting	Yes	
Continue to implement the 'Waiheke Local Climate Action Plan: Waiheke ki uta, Waiheke ki tai, Waiheke ki tua' and maintain support to deliver priority climate actions identified in our local plan and TeTāruke-a-Tāwhiri - Auckland's Climate Plan	No	Insufficient resourcing to explore as this is a unique programme
Support academic and citizen science programmes to help understand and support the health of the aquatic environment	No	Insufficient resourcing to explore as this is a unique programme
Support stream restoration projects including reducing pollution, stream clean ups, fish passage barrier identification and remediation, habitat improvement, native riparian planting, and pest control	Yes	
Restore freshwater ecosystems to provide flood mitigation, habitats for native biodiversity, and carbon sequestration through riparian planting	Yes	
Support regional and community led initiatives that move Waiheke towards a zero-waste future	Yes	
Provide targeted funding to community groups that actively grow conservation volunteerism	No	



Recommended Local Board tailored measures

LTP activity	Measure wording	Measure description
Community	<i>Number of groups supported for capacity building activities</i>	<i>Groups funded through work programme for capacity building activities</i>
	<i>Number of groups engaged to deliver placemaking activities</i>	<i>Groups funded through work programme for placemaking activities</i>
	Number of trees planted in the Urban Ngahere programme	Measures activity delivered through the local board Urban Ngahere planting programme (capex)
Environment	Number of plantings for biodiversity enhancement	Planting through sustainability and healthy waters teams' programmes
	Number of participants in sustainable initiative programmes	Sustainability team programmes





**Discuss work
programmes at
workshop 6**

**Discuss targets after
workshop 6**

**Finalise and adopt
measures and targets in
June as part of the
Local Board Agreement**

