

Waiheke Local Board Workshop Agenda

Date of Workshop: Wednesday 3 April 2024
Time: 12:00pm
Location: Waiheke Local Board, 10 Belgium Street; MS Teams

Time	Workshop Item	Governance role	Purpose	Presenter(s)	Proposed Outcome(s)
12:00	<p>Artworks funding update</p> <p>Attachment Photos from: HeART of Christmas Creative Sundays in February</p>	Oversight and monitoring	Check in on performance / inform future direction	Kashmir Postel <i>Manager Artworks Theatre</i>	Provide members an update to funded events and future plans.
12:30	<p>24/25 grants programmes preview</p> <p>Attachment Presentation</p>	Local initiative / preparing for specific decisions	Provide direction on preferred approach	James Boyd <i>Senior Grants Advisor</i>	Senior Grants Advisor will discuss a proposal for the FY24/25 grant program.
13:30	<p>Community Facilities & Parks update</p> <p>Attachment Wharetana Presentation Urban Ngahere memo Planting scoping sites</p>	Keeping informed	Informal dissemination	Shane Hogg <i>Manager Area Operations</i> Bridget Velvin <i>Facilities Manager</i> Sue Gluskie <i>Facilities Coordinator</i> Jacqui Thompson-Fell <i>Parks & Places Specialist</i>	Members are updated on CF projects and activities in the last month, Wharetana Bay Reserve access challenges and the urban ngahere planting plans.

Waiheke Local Board Workshop Proceedings

Workshop record of the Waiheke Local Board held in person and via Teams on Wednesday 20 March 2024, commencing at 12:00pm

Member attendance:

Cath Handley (Chair)	Bianca Ranson (Deputy)	Kylee Matthews	Robin Tucker	Paul Walden
Present	Present (via MS Teams)	Present	Apology	Absent

Time	Workshop Item	Presenter(s)	Proposed Outcome(s)
12:00	Artworks funding update Attachment Photos from: HeART of Christmas Creative Sundays in February	Kashmir Postel <i>Manager Artworks Theatre</i>	Theatre manager gave an overview of the Christmas programme and Creative Sundays in February. These were all well attended and received positive feedback from community.
12:30	24/25 grants programmes preview Attachment Presentation	James Boyd <i>Senior Grants Advisor</i> Fiona Gregory <i>Community Broker</i>	Senior Grants Advisor discussed proposals for the 2024/25 grants program including timing of grant rounds, prioritised programmes and desired outcomes.

Time	Workshop Item		Presenter(s)	Proposed Outcome(s)
13:30	Item 3	Community Facilities & Parks update Attachment Wharetana Presentation Urban Ngahere memo Planting scoping sites	Shane Hogg <i>Manager Area Operations</i> Bridget Velvin <i>Facilities Manager</i> Sue Gluskie <i>Facilities Coordinator</i> Jacqui Thompson-Fell <i>Parks & Places Specialist</i> Howell Davies <i>Principal Specialist Urban Ngahere programme</i> Audrey Gan <i>Lead Financial Advisor</i>	Staff updated members on CF projects and activities in the last month, Wharetana Bay Reserve access challenges, vessel removal from Palm Beach and the urban ngahere planting plans.

Governance Role

1. Accountability to the public
2. Engagement
3. Input to regional decision-making
4. Keeping informed
5. Local initiative / preparing for specific decisions
6. Oversight and monitoring
7. Setting direction / priorities / budget

Role of Workshop:

- (a) Workshops do not have decision-making authority.
- (b) Workshops are used to canvass issues, prepare local board members for upcoming decisions and to enable discussion between elected members and staff.
- (c) Workshops are not open to the public as decisions will be made at a formal, public local board business meeting.
- (d) Members are respectfully reminded of their Code of Conduct obligations with respect to conflicts of interest and confidentiality.
- (e) Workshops for groups of local boards can be held giving local boards the chance to work together on common interests or topics

The HeART of Christmas 2023 Images













Creative Sundays in February

in the ArtWorks Courtyard



TREMOLO FESTIVAL
Sunday 4th February - 12-10pm

Day: Live music, live art, food carts & workshops
Night: Bands & DJ's (ticketed)

GLAMOUR UP & STRUT YOUR STUFF
Sunday 11th February - 4-8pm

Glamour up and then parade with us down
Oneroa and finish off with a pride party!



MAD HATTERS TEA PARTY
Sunday 18th February - 10am-12pm

A poncy morning tea with arty games,
interactive performance and music.
Bookings are required

THE TAMARIKI TREASURE HUNT
Sunday 25th February - 10am-12pm

A fun-filled pirate adventure
with performances, riddles and music!



FREE ENTRY TO ALL EVENTS!

For more information visit: artworkstheatre.org.nz



Poster Design by Zephir Delamore

TREMOLO





GLAMOUR UP AND STRUT YOUR STUFF





MAD HATTER'S TEA PARTY







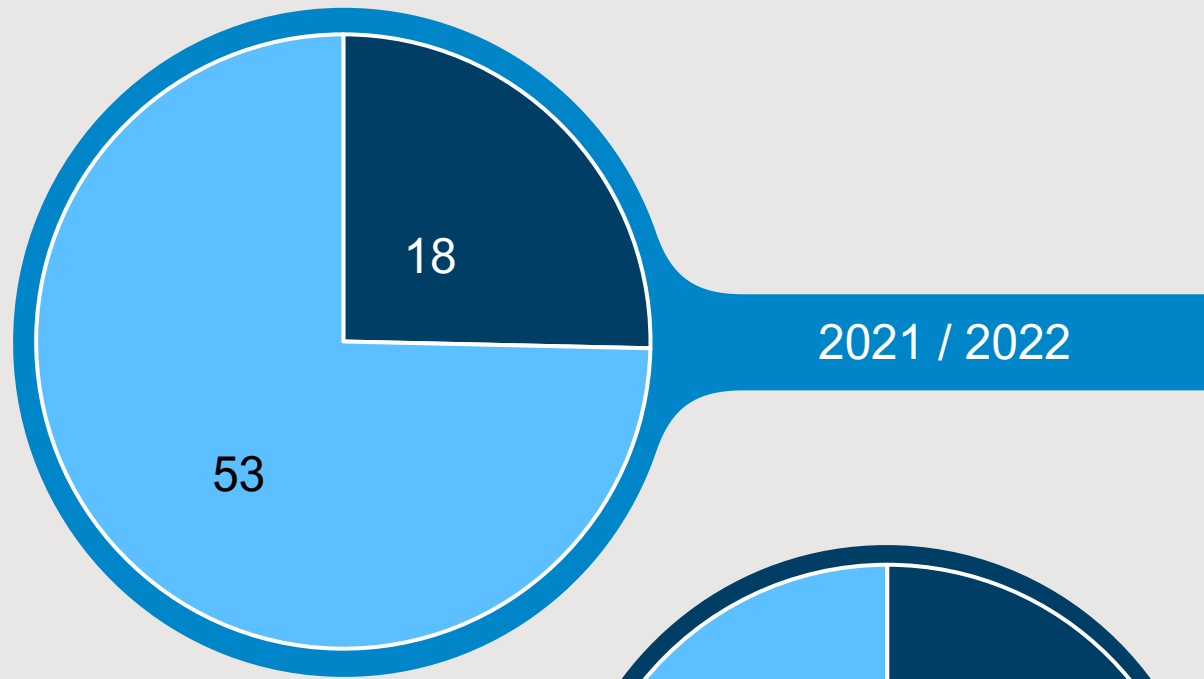
THE TAMARIKI TREASURE HUNT



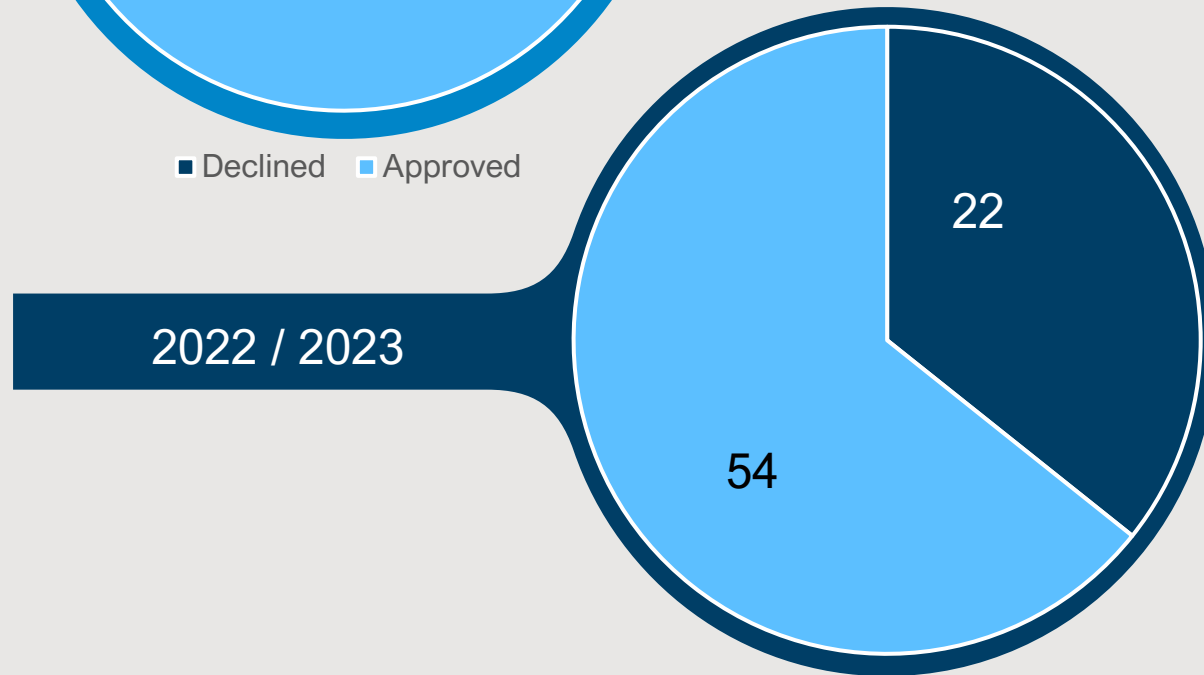


Review of Waiheke Grant Programme *2024/2025*





■ Declined ■ Approved



■ Declined ■ Approved



Largest applications of 22/23



Organisation	Project	Allocated
Waiheke Community Art Gallery - Te Whare Taonga o Waiheke	Two Ceramic Wheels	\$4,000
Waiheke Community Art Gallery - Te Whare Taonga o Waiheke	WCAG's ART MAP & SUMMER EXHIBITION 2023	\$4,000
Waiheke Amateur Radio Club	Resilient Civil Defense Community Messaging and Broadcasts	\$4,000
Lorna Maikara Ropata	Pūanga 2023 (teaching courses)	\$4,000
Geneva Alexander-Marsters	The Waiheke TV Archive and Launch Screening	\$4,000



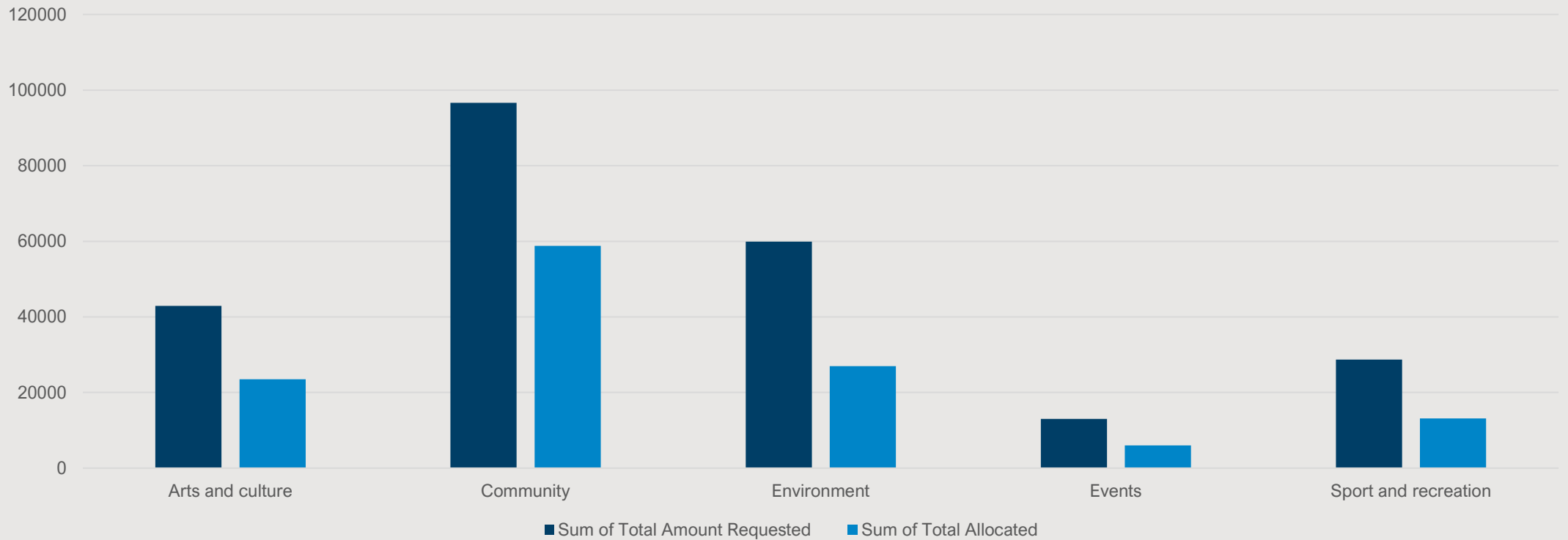
Largest Environmental applications of 22/23



Organisation	Project	Allocated
Waiheke Resources Trust	Love Our Wetlands Waiheke (LOWW)	\$9,360
Waiheke Resources Trust	Love Our Wetlands - GIS specialist	\$6,120
Newton Reserve Group	Restoration of Fisherman's Rock	\$4,000
Sally Horwood	Wildlife at Waiheke (W@W)	\$4,000
Lisa West on behalf of Rakino Snorkel Group	Rakino Sub-tidal Fish Counting Workshop	\$2,468



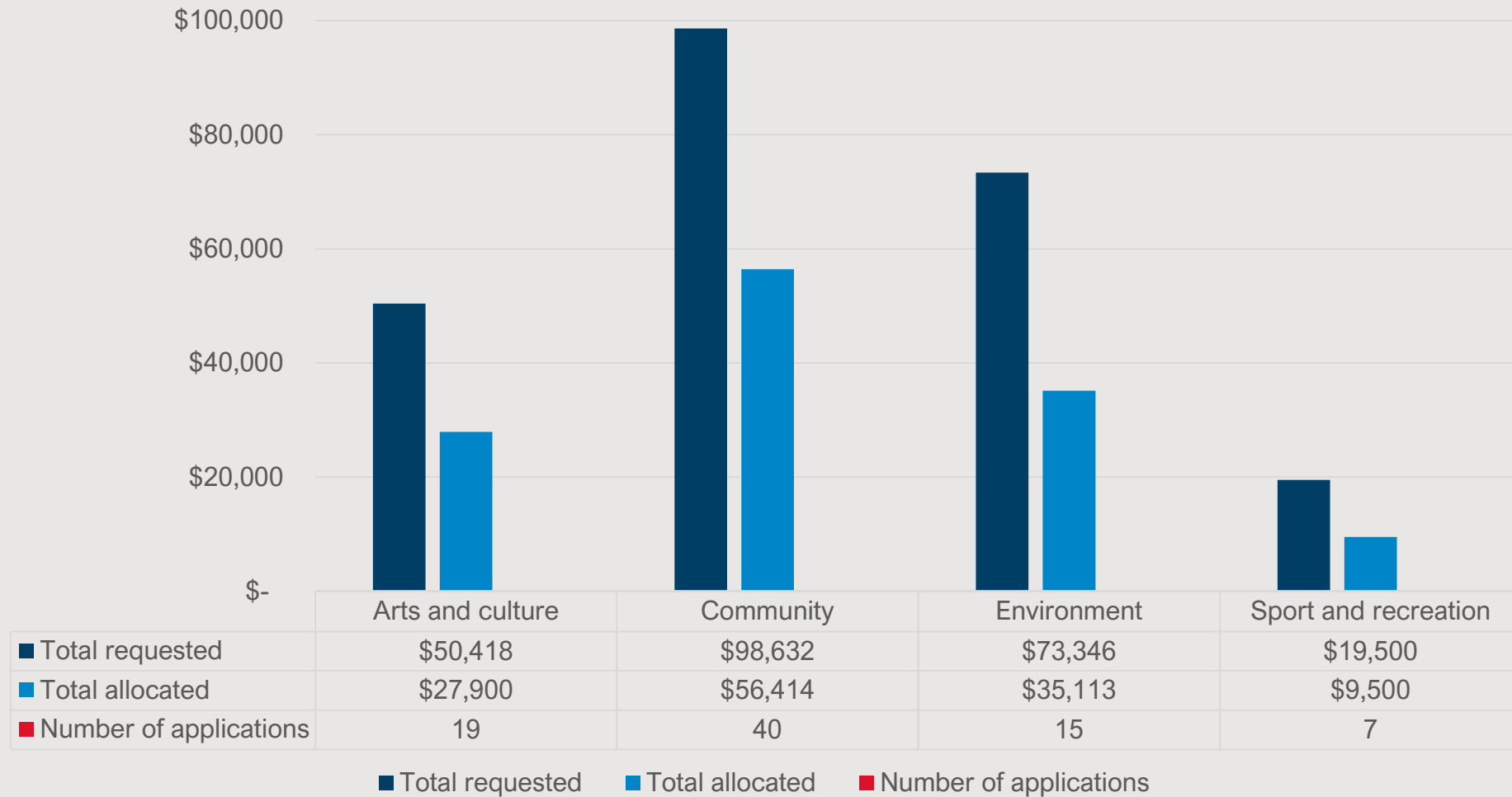
Allocations breakdown by focus for 21/22



Values	Arts	Community	Environment	Events	Sports
Total Requested	\$42,914	\$96,953	\$59,902	\$13,000	\$28,689
Total Allocated	\$23,491	\$58,810	\$26,978	\$6,000	\$13,139
Applications	18	34	12	3	8



Allocations breakdown by focus for 22/23



Grant Outcomes Our People – **new from 2023**

A resilient and connected community

A healthy and supportive society, where people feel there is care, respect and all people are valued

Strengthen collaboration and partnership with Māori

Enhance Māori wellbeing and potential

A flourishing arts sector that celebrates our unique island identity **and is recognised as an arts destination**

Youth are valued and have opportunities to thrive



Grant Outcomes Our Facilities and Open Spaces – **new from 2023**

Improve the open space network on the island

Improve our community's wellbeing by providing quality arts, recreational and community facilities

Embrace, **sustain and celebrate** Waiheke's rich Māori identity, **knowledge** and cultural history



Grant Outcomes Our Place – **new from 2023**

~~Planning that enables local placemaking~~

~~Safe, fit for purpose and low carbon environmentally friendly transport infrastructure~~

~~Mātiatia is redeveloped in consultation with mana whenua, and subsequently with the community and all other stakeholders~~

Sustainable living and healthy homes

~~Sustain and celebrate Māori identity, knowledge and practice~~

Marae are sustainable cultural centres



Grant Outcomes Our Economy – **new from 2023**

Economic development on Waiheke is environmentally, economically and socially sustainable

Our visitor industry is managed sustainably

~~Waiheke is recognised as an arts destination~~

Strengthen our economy in keeping with the island's character and our need to increase our resiliency

~~Enhance Māori wellbeing and potential~~



Grant Outcomes Our Environment – new from 2023

Restore, enhance, and protect our natural environment in partnership with our community

Respond to the challenge of climate change

Improve conservation of our marine and coastal environment

A water sensitive community through reducing the waste stream, managing stormwater sustainably and providing education to manage water systems.

~~Reduce the waste stream~~

~~Stormwater is managed sustainably~~



High Priorities – Any changes?

- Collaboration with other community organisations
- Local procurement



Low Priorities – Any changes?

- commercial entities and promotion of commercial entities
- ticketed events
- sporting uniforms and travelling for sports.
- activities that primarily benefit communities outside the Waiheke Local Board area
- activities that primarily benefit a third party (e.g. activity to gain money for an organisation)
- grants to support that purchase of or maintenance associated with motor vehicles
- wages and/or operational costs
- individuals with projects on private land



Exclusions – Any changes?

- Alcohol
- Applications for Liquor licenses



Investment approach – Any changes?

- Quick Response Grants: for grants \$500 to \$2,000
- Local Grants: For grants \$2,500 to \$10,000
- Environmental Grant: For grants \$2,000 to \$10,000 and a requirement for applicant contribution (financial, in-kind or voluntary labour) towards project costs



Multi-board changes

Issues with Multi-board applications:

- Lead to lower quality applications
- Frequently for ongoing costs like wages
- Forces rounds to close at similar times, increasing workload
- Worse for accountability as this must account for multiple boards
- Timelines are less clear for applicants
- Less chance to be funded (only 19.7% of all MB grants are funded vs the 81% of other grants)
- Delays applicant getting funding



Multi-board changes

Replacement options with applications

- Automatic sharing of information between applications
- Improving how we direct people around our website

Applicants have let us know the Multi-board process isn't helpful and will often use multiple individual applications instead

We are looking for feedback from the board with the plan to remove it before the next financial year



Proposed dates for 2024/2025

	LG	QR
June	R1 Open	
July	R1 Close	R1 Open
Aug	Decision	R1 Close
Sept		
Oct		Decision
Nov		
Dec		
Jan	R2 Open	
Feb	R2 Close	R2 Open
March	Decision	R2 Close
April		
May		Decision
June		

Quick Response

Opens	Closes	Decision Made
July 2024	August 2024	September 2024
January 2025	February 2025	May 2025

Local Board

Opens	Closes	Decision Made
June 2024	July 2024	August 2024
January 2025	February 2025	March 2025



Wharetana Bay Reserve

Workshop Date: 3/04/2024

Shane Hogg – Manager Area Operations, Parks & Community Facilities

Additional information if required



Purpose

To discuss the current access challenges to maintain Wharetana Bay reserve





Background

- Wharetana Bay Reserve is currently accessed through private property for maintenance.
- The private landowner has decline further access through his property.
- Only one alternative location can be used to access the reserve but is in poor condition for equipment.
- Alternative location private landowner has decline access.





Thank you

Ngā mihi

Memorandum

19 March 2024

To: Waiheke Local Board

Subject: Waiheke Urban Ngahere local implementation planting plan review

From: Howell Davies, Principal Specialist - Urban Ngahere (Forest), Parks and Community Facilities

Contact information: howell.davies@aucklandcouncil.govt.nz

Purpose

1. To seek support from the local board for implementation of Growing phase to plant new trees in parks identified in the Waiheke Island Urban Ngahere Action Plan 2023.

Summary

2. The regional Auckland's Urban Ngahere (Forest) Strategy¹ (2019) responds to the changes in the urban tree canopy cover and potential climate change impacts.
3. Since 2021, Waiheke Local Board has been involved in the local ngahere implementation planning to understand the current tree coverage and prepare a plan to plant in areas where trees are needed to provide shade, habitat and benefits to local communities.
4. The Waiheke Urban Ngahere Analysis Report outlining the canopy coverage analysis across the island of Waiheke was adopted in 2021. The analysis report identified that the average tree canopy cover across the island was 40 per cent.
5. The local board have allocated \$10,000 LDI OPEX in 2022/2023 for development of tree planting plans to help guide implementation of the Growing phase of the ngahere program.
6. This memo outlines the next steps for implementation of the Growing phase to plant new trees in local parks and streets to increase shade, provide habitat and provide future tree canopy cover.
7. Delivery of the Growing phase over the next three years will be led by Parks and Community Facilities (PCF) and will be funded by LDI OPEX and LDI CAPEX.
8. We are seeking local board direction on:
 - the priority rating used to determine the sequencing for new tree planting
 - any changes to the recommended priorities for the Growing phase and the delivery of new trees in the next planting season (2023/2024)
 - any preference of parks to add to the surveying and site analysis process for the planting program in 2025/2026.
 - the support for a local board funded community planting event in 2024 or 2025 to promote the environmental benefits of tree planting to create natural shade in local streets and parks.

¹ <https://www.aucklandcouncil.govt.nz/plans-projects-policies-reports-bylaws/our-plans-strategies/topic-based-plans-strategies/environmental-plans-strategies/Pages/urban-ngahere-forest-strategy.aspx>

Context

9. In 2016, staff studied the urban forest across the Auckland region using information captured from Light Detection and Ranging methods (LiDAR). A detailed report² was developed by staff from the Research Investigation Monitoring Unit (RIMU), with findings released in March 2017. A separate analysis of the data for Waiheke Island from LiDAR was completed in 2021. The analysis determined that the average tree canopy cover across the Waiheke Local Board had an average of 40 per cent tree canopy cover.
10. Auckland's Urban Ngahere (Forest) Strategy (2019) objective is to increase regional tree canopy cover from the current 18 per cent to 30 per cent. Local boards' role in this is to have local implementation plans to address the canopy loss in the local board area. Local implementation planning for the Ngahere programme has three phases: Knowing, Growing and Protecting.
11. The Waiheke Local Board commenced the Knowing phase in 2021/2022. The surveying for the second phase, Growing, commenced in FY 2023/2024 and the third phase, Protecting, is planned for future years.
12. The Waiheke Ngahere Analysis report was completed and approved 25 August 2021, (WHK/2021/85). The analysis report was the first of time this type of forest analysis work had been applied to the LiDAR data for the Island. The results provide fine grained detail on tree cover on public and private land across the Island. The report has established a tree canopy cover for the island of forty per cent, which represents the net overall tree canopy cover of the Waiheke Island.
13. The Waiheke Island Urban Ngahere (10 Year) Action Plan was approved at the business meeting on 29 November 2023 (WHK/2023/163) (. The ngahere action plan provides long-term direction on planting new trees across the board's area, targeted at raising the overall tree canopy coverage in streets.
14. Implementation of the ngahere action plan commenced in 2023 and had included meeting with the board to workshop areas to assess for new planting. The site investigations have taken place in a number of parks and streets across the board area to determine the suitability of locations to plant new large growing trees. The main objectives of the growing program are to provide direction on where to plant trees for future shade, help with climate adaptation, increase tree canopy cover, and contribute towards environmental improvements in local streets and parks.
15. Table 1 below provides an outline of the streets and parks surveyed and planting opportunities identified; a draft of the planting plans for the various areas surveyed is being presented to the board for feedback (Attachment A).

Table 1: New specimen tree planting sites

Place	Site assessment comments
Tawaipareira Reserve	<i>Location to plant 46 trees across the reserve to provide shade and shelter. New tree planting will increase the species diversity, help to create ecological linkages and increase tree canopy cover in the local area.</i>
Owhanake Reserve	<i>Location to plant 53 trees across the reserve to provide shade and shelter. New tree planting will increase the species diversity, help to create ecological linkages and increase tree canopy cover in the local area.</i>

² Auckland's urban forest canopy cover: state and change (2013-2016/2018). Revised April 2021
<https://www.knowledgeauckland.org.nz/publications/auckland-s-urban-forest-canopy-cover-state-and-change-2013-20162018-revised-april-2021/>

Place	Site assessment comments
Tui Street	<i>Locations to plant 18 trees along the length of the street. Surveying of residents will be necessary to agree on tree species and location. Opportunities to increase tree canopy cover along the street.</i>
Nikau Street	<i>Locations to plant 14 trees along the length of the street. Surveying of residents will be necessary to agree on tree species and location.</i>
Manuka Road	<i>Locations to plant 11 trees along the length of the street. Surveying of residents will be necessary to agree on tree species and location.</i>
Moa Avenue	<i>Locations to plant 12 trees along the length of the street. Surveying of residents will be necessary to agree on tree species and location.</i>
Matai Road	<i>Locations to plant 7 trees along the length of the street. Surveying of residents will be necessary to agree on tree species and location.</i>
Onetangi Sports Park	<i>Location to plant 100 trees across the reserve to provide shade and shelter. New tree planting will increase the species diversity, help to create ecological linkages, and increase tree canopy cover in the local area.</i>
The Strand	<i>Locations to plant 21 trees along the length of the street. Surveying of residents will be necessary to agree on tree species and location.</i>

16. Local board direction is sought on confirmation of the prioritisation process that should be applied to planting sites for sequencing of the delivery of annual tree planting to the sites identified in the action plan. The number of new trees planted will be dependent on the annual budget allocation to the Ngahere Growing program.

Discussion

17. The draft high-level analysis of the 2016-2018 data has shown a net overall coverage of 40%; this is the first time that LiDAR data has been available for the Hauraki Gulf Islands. The data has enabled a detailed evaluation of the tree canopy cover across the various land use types and Statistical Areas (SA2).
18. The results indicate the local board area has 33.5% Canopy cover on roads, 55.8% on public park land, 35% of other public land (DOC) and 41% on private land and overall, nearly three quarters of the ngahere on the island is on privately owned land.
19. The longer-term objectives are to increase tree canopy coverage across the board area in those areas of lower cover. To achieve tree canopy improvements will require sustained work to plant trees in the right locations to increase overall tree cover on public land across the board's area.
20. Staff recommend that efforts commence to plant large growing trees in local streets and on public reserve land to increase canopy cover and continue these efforts over a 10-year period. If annual efforts continue this will raise the overall net canopy cover across the board area.
21. The Waiheke Island Urban Ngahere (10-year) Action Plan 2023 identifies locations across the local board area in parks and along streets where new tree planting opportunities are located for planting new specimen sized trees to increase canopy cover and shade. The plan focuses on increasing large tree numbers by identifying areas where planting new trees is possible on public land, in parks and selected areas within the road corridor.

Growing Phase

22. The action plan set outs several goals to help grow the ngahere on public land and increase the overall tree canopy cover. The action plan includes a set of goals. One of these is to 'set up a sustained annual tree planting program within the road corridor and on public park land'.
23. The sites visited for assessment were part of a list of areas the board provided at the workshop arrange to discuss tree planting on the island. The details have helped inform and direct surveying efforts to ensure the focus on areas of low coverage in streets and on parks with low amounts of shade.
24. The board allocated LDI OPEX to develop planting plans to help give guidance of the areas where there are opportunities to plant new trees. The process is part of the annual process that has been recommended in the Ngahere Action Plan. Staff have completed a series of site evaluations in the road corridor and in a small number of parks and developed planting plans, along with basic site details.

Community planting events

25. There is an opportunity for the Local Board to consider holding a public planting event during winter program in 2024 or 2025 in one of the highlighted parks with large areas available to plant trees. Feedback from the board is sought to determine whether there is support for this type of community initiative to provide for more shade in parks and use the event to promote the values of planting trees for the local park environment and parks users' health and wellbeing.

New specimen tree planting

26. The planting sites outlined in Table 1 (page 2) are streets and reserves where opportunities exist to plant new trees. The reserve sites have a range of locations within where opportunities exist for new tree planting to increase tree canopy cover and provide future natural shade in parks. Desk top analysis, along with site assessments have taken place to assess the locations and develop the planting plans. The planting plans are in attachment A.
27. The plans are in a draft form and subject to changes pending feedback from stakeholders. The sites initially proposed will be crossed checked against the annual work program to ensure other project work being planned will not impact on new tree planting locations, or where opportunities may exist to incorporate new trees as part of a wider upgrade or renewal project in the park.
28. Planting new trees along streets will require further resident engagement and consultation with utility and transport representatives. The initial survey has established a number of locations that could potentially be suitable with resident approval. The initiative will require additional funding to complete work should any of the streets listed be chosen for a future planting project.

Next steps

29. Board members are invited to provide details of additional streets and parks, where future new tree planting would benefit park users. The ngahere growing program is based on identifying where to plant the right trees in the right places to provide benefits to local communities.
30. Staff seek feedback from the local board about:
 - confirmation on the priority rating used to outline the order of priority in which the tree locations identified are planted.
 - any changes to the recommended list of street and park locations for new trees outlined in the planting plans
 - the preference for a local board sponsored community planting event and possible locations.
31. If some of the locations proposed are supported by the local board a number of new trees will be planted in the 2023/2024 planting program.

32. Staff will provide a progress update later in the financial year on planting taking place in the winter of 2023 and advise on the assessment and development of annual planting plans for 2025/2026.

Attachments

Attachment A: Growing Program - draft site assessments for Waiheke Island ngahere planting plans.

Attachment B: Reference spreadsheet – overview for planting plans.



Alison Park - Waiheke

Newton Reserve

Little Oneroa Reserve

N

11

7

12

15

7

11

14

Wharoa Basin

Kiwi Moa Accessway

Blackpool Park

7

RATA STREET

18

21

Kiwi Moa Accessway

Makora Reserve Accessway

Te Huruhi Bay Reserve

Blackpool Cemetery Reserve

THE ESPLANADE

The Esplanade Blackpool

8

WAIHEKE

0 62.5 125 250 Meters

Piritaha Esplanade Reserve

Eagle Technology, Land Information New Zealand, GEBCO, Community maps contributors



N



Onetangi Road Quarry

OSTEND ROAD

ONETANGI ROAD

Onetangi Road O'Brien Road Bridl

WAIHEKE

O'Brien Road Te Whau Road Bridle

ONETANGI

Te Whau Esplanade Reserve 1

Onetangi Sports Park (Rangihoua) 100

RANGIHOA INLET

O'BRIEN ROAD

WAIHEKE EAST

GORDONS ROAD

MUSSO DRIVE

0 95 190 380 Meters





WAIHEKE

KORORA ROAD

Owhanake
Matiatia
Walkway

Owhanake
Reserve

ONEROA WEST

53

0 25 50 100 Meters



Tawaipareira Reserve

OSTEND

46

Tawaipareira Reserve

WAIHEKE

Anzac Bay Reserve

OSTEND ROAD

CALAIS TERRACE

TAHI ROAD

POTO ROAD

0 25 50 100 Meters



WAIHEKE

Local Board Report – February 2024

MAKING
GREAT PLACES
AUCKLANDERS LOVE
PARKS & COMMUNITY FACILITIES



PREPARED BY SHANE HOGG – AREA OPERATIONS MANAGER

Parks & Community Facilities | Customer and Community Services Directorate

Proudly supported by



PERFORMANCE REPORTING

Audit Results and Request for Service

Request for Service Received

Total raised for FY23/24 YTD **804**

Waiheke RFS Breakdown



*Only includes RFS that have resulted in a Work Order for action.

Breakdown of Top 5 Request for Service for February

Service Name	#Received
Berm Mowing / Maintenance	4
Carpentry Maintenance Service	12
Loose Litter Collection	2
Plumbing Maintenance Service	17
Tree Maintenance - General	34

Breakdown of Top 5 Request for Service FY23/24 YTD

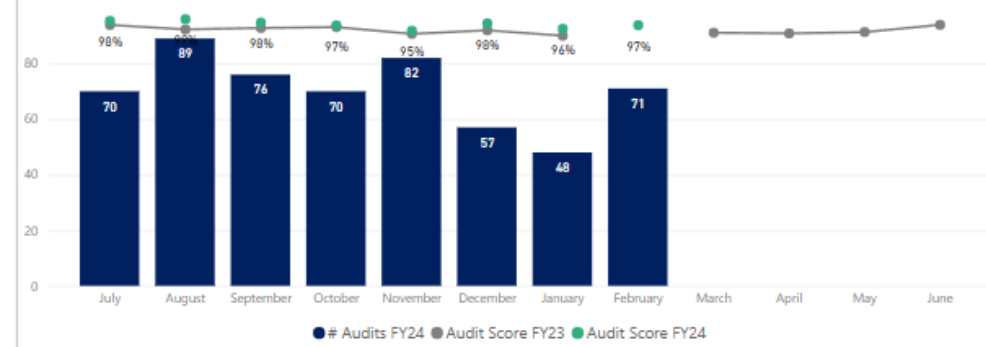
Service Name	#Received
Carpentry Maintenance Service	89
Electrical Maintenance Service	81
Plumbing Maintenance Service	140
Structure Maintenance and Repairs	34
Tree Maintenance - General	192

COMMENTARY

Requests for service are down this month than previous and back to normal levels. No major concerns have been noticed this month and over all so far this financial year nothing that is causing concern expect for the number of plumbing requests however plumbing is a non-scheduled activity in our contracts.

Audit Results

Waiheke Full Facilities Audits



The highlights and lowlights of audits undertaken FY23/24 YTD are:

Highlights YTD

Turf
Sportsfields
Response WO
Litter
Furniture, Playgrounds & Recreational Equipment

Lowlights YTD

COMMENTARY

No lowlights noted which is fantastic result for the month, audits are getting back to their usual level now staff are back in the office more from the summer break. Audit results are consistent in the high 90%'s which is what we want to see.



Track Signage

We have refreshed the signages along a number of walkways across the island

Catherine Mitchell Reserve - Onetangi

Before



After



Continue on the next slide...



Track Signage

Newton Reserve

Before



After



Continue on the next slide...



MAINTENANCE DELIVERY UPDATE

MAKING
GREAT PLACES
AUCKLANDERS LOVE
PARKS & COMMUNITY FACILITIES

Track Signage

Palm Beach Reserve

Before

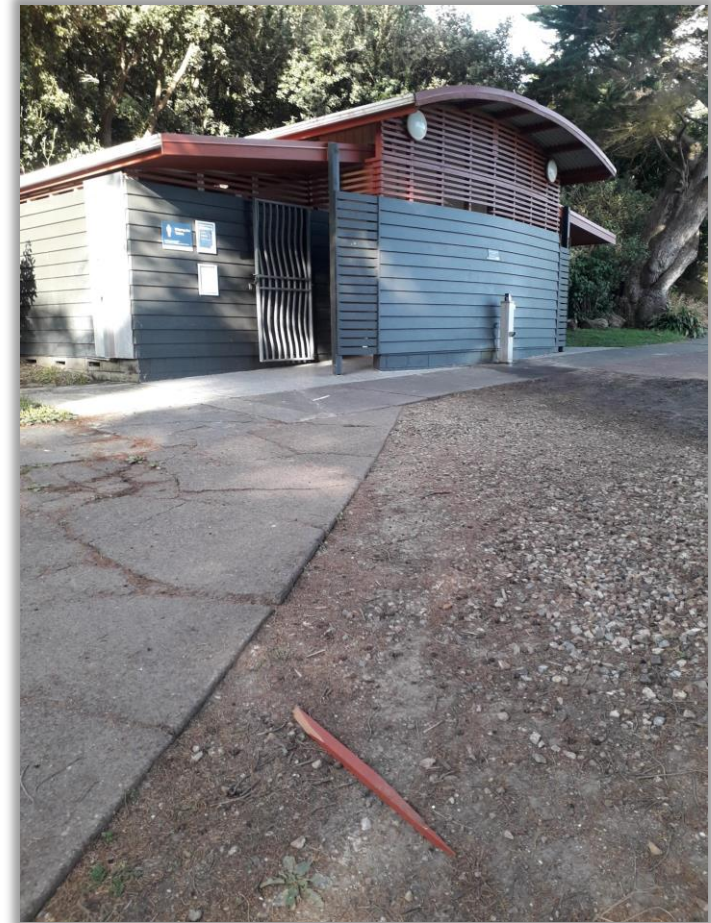


After



Little Oneroa Toilets

The Little Oneroa toilets were vandalised recently. We have completed the repairs this month with our contractor to keep the toilets looking good and operational.





Blackpool Beach

The Godwits have arrived at the beach





MAINTENANCE DELIVERY UPDATE

Oneroa toilets

We have completed the painting of the Permaloo doors as requested by the local board.

Before



After





MAINTENANCE DELIVERY UPDATE

Church Bay Esplanade Reserve

Macrocarpa seat has been replaced as the old one was looking tired, it is installed at the same location near the Foreshore.





MAINTENANCE DELIVERY UPDATE

Waiheke Backpacker Cottage

We have completed repairs to the rotten bay window in the kitchen at the backpackers cottage.

Before



After





MAINTENANCE DELIVERY UPDATE

Oneroa Beach Toilet

We have repaired and repainted the roof, Cleaned and patching-up the exterior and tidied up the interior to maintain a high standard appearance

Before

After



Continue on the next slide....



MAINTENANCE DELIVERY UPDATE

Oneroa Beach Toilet



Sustainability Centre

The root barrier has been installed in both areas one by the building and another by the concrete pad. The large visible roots by the door have also been grounded out. This allows stage two of the remedial works to commence securing the building foundations.





MAINTENANCE DELIVERY UPDATE

Scout Hall boat ramp

We have water-blasted the boat ramp off the Scout Hall.





MAINTENANCE DELIVERY UPDATE

Park Point Walkway - Te Wharau Bay



New signage to deter campers from using the reserve overnight.





MAINTENANCE DELIVERY UPDATE

Trig Hill Walkway

The route from Trig Hill to Awaawaroa had an issue with people leaving the gates open, we have added a new stile to the fence, we hope that this will prevent livestock from getting out.





MAINTENANCE DELIVERY UPDATE

Blackpool Park

We have completed the pickleball line markings to the unused hardstand area at Blackpool.



Whakanewha Regional Park – Poukaka Flats toilet block re-stain

Before



After



Works are commencing well on the exterior re-stain of the toilet block.

Current status:

- Works are 80% completed
- The exterior has been sanded down and two coats applied. Some areas require the final coat including the posts.
- We are experiencing some delays with product shipment.
- Scaffolding has been removed in the interim as well as the gutter moved to the side to make it safe for public use.
- Works will be completed once products arrive on site.

We have included the below items identified in the asset assessment report in the scope of works.

To be completed:

- Replace Clearlite sheeting
- Replace the current rear gutter
- installation of new Fire Exit signage
- fully stain the interior to match the exterior (ceiling and internal walls).

Tawaipareira Reserve Project Update

Works have been completed at Tawaipareira Reserve with construction fencing removed.

The following items were delivered as part of the current project scope:

- Learn to ride paths,
- pump track installation
- Shade sail with furniture and cycle stands
- Basketball Court with art-courts co-designed with Iwi
- Stencil painting – patterns co-designed with Iwi
- An opening ceremony is planned by the local board for March 17th 2024.

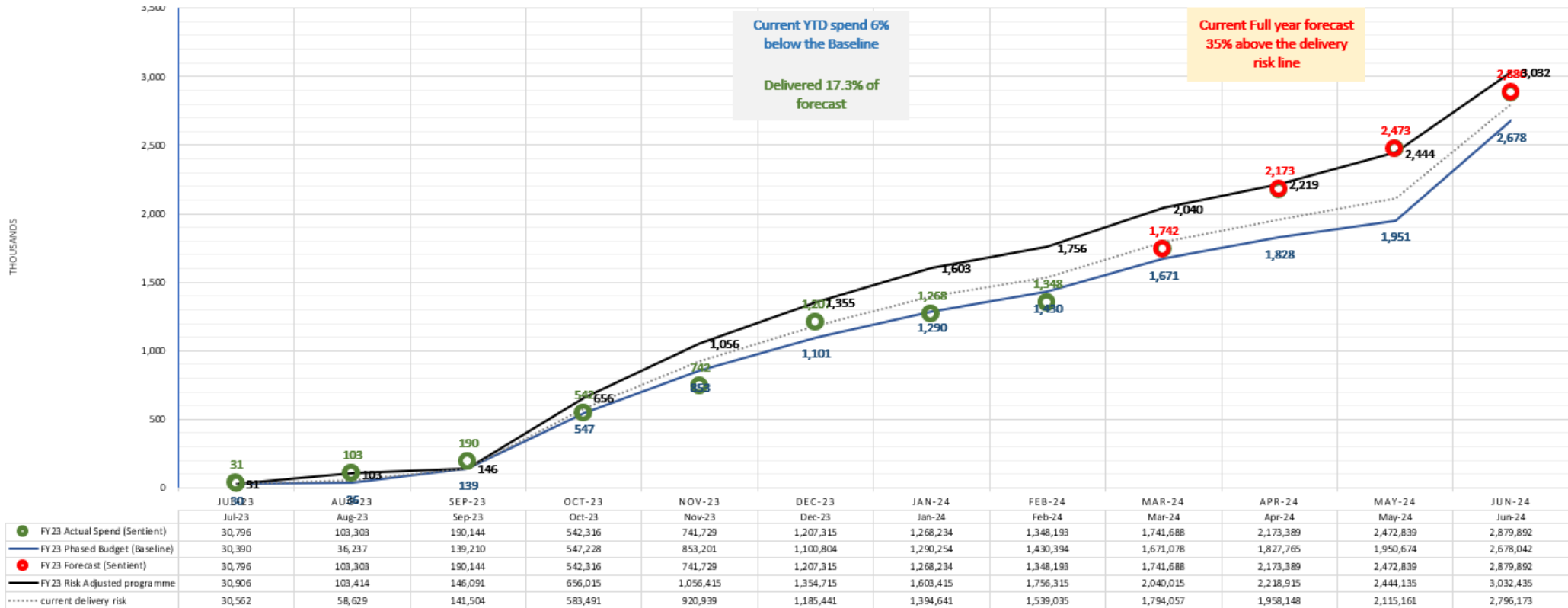
Works to be completed:

- Vehicle crossing – scheduled for May 2024 subjected to funding available at the end of the project
- Planting –scheduled for May 2024 during planting season



PROJECT DELIVERY UPDATE

Financial Year 2023/2024 Work Programme –Q3 delivery update



We are currently on track for our work programme delivery this financial year (Green Circles to the Blue Trendline). We are still forecasting to spend the budget (Red Circles).



Arboriculture Maintenance Request for Service (RFS)

Treescape completed the first part of reduction pruning on the Heritage Pohutukawa at Victoria Road South, Onetangi.

The tree had been highlighted that the large stem over the property appeared to be settling as a proactive approach and in conjunction with the council's Heritage Arborist and Senior Arborist the decision was made to undertake a large weight reduction over the client's house. We will also be carrying out further weight reduction on the other side of the tree, we will then monitor the tree and act accordingly over time as the tree reacts and grows.





Arboriculture Maintenance Request for Service (RFS)

Treescape carried out encroachment/boundary pruning to a Eucalyptus tree on Junction Road, Palm Beach





Arboriculture Maintenance Park/Reserve Work



Treescape removed an uprooted tree off a BMX track which was blocking the cycle path and causing a hazard.

A fallen storm damaged tree across the track on Church Bay Road, Treescape removed the tree and eco piled the debris and made the track safe.

Gorse removal to improve access for pest plant control on Rangihoua

A large area of dense gorse up to around seven feet high was mulched by tractor to enable faster initial control and easier access of moth plant, woolly nightshade, climbing asparagus and other pest plants growing in this area. This project was funded by NETR through Environmental Services and managed by PCF.

Rangihoua is a high value archaeological and cultural site. Control measures to prevent potential damage included:

- Work took place under cultural supervision (cultural briefing on tihi shown in photo, upper right)
- Work was overseen by experienced local Eco specialist operator (Free The Tree), whose staff have good site knowledge
- A light tractor operated by a local with good site knowledge prevented potential transfer of pathogens to the island
- Bar was set high to avoid scalping and area marked out with tape and GPS
- Job was delayed (for some time) until a sufficient period of dry weather meant suitable ground conditions were achieved.





ECOLOGICAL UPDATE

Gorse removal to improve access for pest plant control on Rangihoua

During day 2 of the operation, a potential kumara pit was located, indicating both weed density and that works were being undertaken in a manner that enabled the Accidental Discovery Protocol to be implemented.

Free The Tree taped off the potential kumara pit and PCF staff reported it to the Senior Archaeological Specialist in the Heritage Team.

Several native trees were found to have been girdled by pest plant vines. Improved access will help us manage them better.





WORK PROGRAMME UPDATE

Changes to agreed FY24 Project Delivery Programme

Minor Change

Projects affected by minor change over the previous month:

ID REF	Activity Name	Change
	Nothing to report	

Substantial Change

Projects affected subject to substantial change:

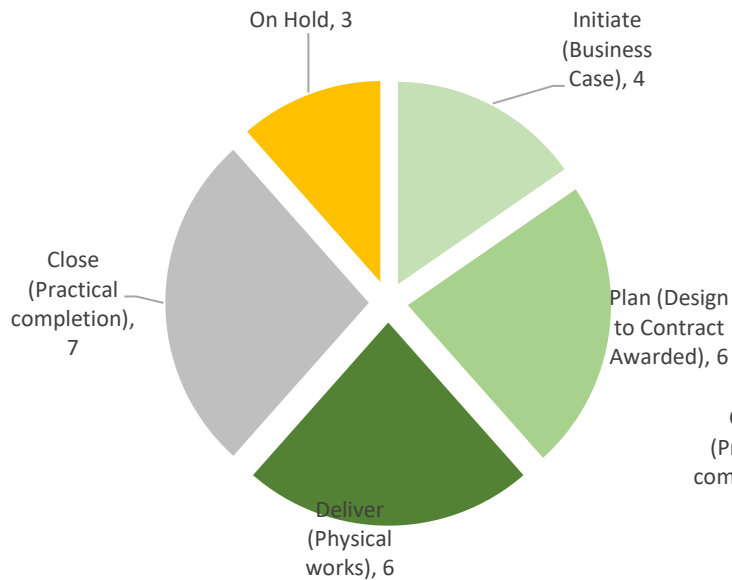
ID REF	Activity Name	Change
	Nothing to report	

PROJECT DELIVERY STATUS

Project Delivery

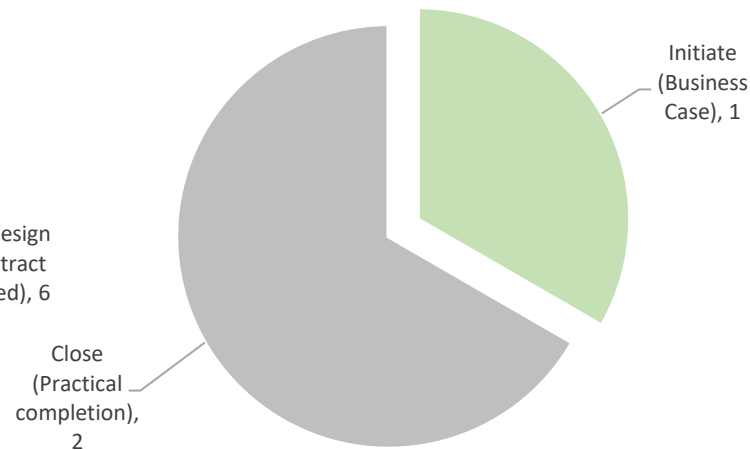
Waiheke Local Board - Project Status

Total Number of Projects - 26



Waiheke Local Board - Project Status

Total Number of LDI Projects - 3



Notifications - Next Month

OWNER: Shane Hogg

Our Facility Manager for the Whau Local Board area has taken a secondment to the Upper Harbor Local Board Area until December 2024. We are currently recruiting for a replacement.

TIMELINE: 12th April 2024



PROJECT DELIVERY STATUS

				Initiate	Preliminary design	Detailed Design	Tender Process	Construction	Defects
				2023/2024 - Current year					
Activity Name	RAG	Local Board Commentary	Timeline	Q1	Q2	Q3	Q4		
Albert Crescent to Wharf Road - renew walkway and retaining wall	Green - On Track	Project complete November 2022.	Baseline Forecast/Actual	[Gantt chart showing completion in Q4 2022]					
Artworks and Community Centre - Comprehensive Renewal	Green - On Track	Current status: Professional Services procurement nearly complete Next steps: Start Building consent documentation	Baseline Forecast/Actual	[Gantt chart showing completion in Q4 2023]					
Carpark and Roding - Renewals - Waiheke	Green - On Track	Current status: Scope of project has been reduced. Tender process underway. Next Steps: Review proposal and award physical works contract.	Baseline Forecast/Actual	[Gantt chart showing completion in Q4 2023]					
Catherine Mitchell Cultural Society building - interior and exterior renewals	Green - On Track	Project completed September 2023.	Baseline Forecast/Actual	[Gantt chart showing completion in Q3 2023]					
Citizens Advice Bureau - interior and exterior renewals - Waiheke	Green - On Track	Current status: Detailed design completed for structure remediation and building consent has been lodged. Next steps: Proceed with tender and physical works are expected to commence in March 2024.	Baseline Forecast/Actual	[Gantt chart showing completion in Q1 2024]					
Golf Clubhouse - interior and exterior renewals - Onetangi Sports Park	Amber - At Risk	Current status: Project to be put on hold. A site visit has taken place involving stakeholders and the engineer to establish the project scope. Next steps: Proceed to assign the engineering work and advance the design phase accordingly.	Baseline Forecast/Actual	[Gantt chart showing completion in Q4 2023]					
Hekerua Bay Reserve - renew path and install retaining wall	Amber - At Risk	Current status: Design works for the retaining wall are completed. Meet with stakeholders and discuss retaining wall alignment and current encroachment of the carpark. Retaining wall footings are being re-designed, access will be required from Neighbours land to install piles for retaining wall. Next steps: Discuss options for footings and get permission from the Neighbour to allow access. Building consent documentation is being prepared for lodgement. Site visit has been arranged with Neighbour to discuss options, and encroachment of carparking bay on Council land.	Baseline Forecast/Actual	[Gantt chart showing completion in Q4 2023]					
LDI minor capex fund FY2022/2023 - Waiheke	Green - On Track	Project completed October 2023.	Baseline Forecast/Actual	[Gantt chart showing completion in Q4 2023]					
Little Oneroa Reserve - renew play space, stairs and pathways	Green - On Track	Project completed.	Baseline Forecast/Actual	[Gantt chart showing completion in Q4 2023]					
Minor Capital works - Waiheke	Green - On Track	Current status: This budget is for the delivery of small works through the Facility Managers and items will be identified over the course of the financial year. Next steps: Delivery of minor capital works items.	Baseline Forecast/Actual	[Gantt chart showing completion in Q4 2023]					



PROJECT DELIVERY STATUS

			Initiate	Preliminary design	Detailed Design	Tender Process	Construction	Defects
			2023/2024 - Current year					
Activity Name	RAG	Local Board Commentary	Timeline		Q1	Q2	Q3	Q4
Onetangi Sports Park - general renewals	Green - On Track	Current status: Resource consent was obtained for installing an additional relocatable style changing room with toilets and utility connections. Design works progressing for the foundation and utility connection for the changing room. Next steps: Lodge building consent along and place order for a second changing room.	Baseline					
			Forecast/Actual					
Open space furniture, fixings, equipment, BBQs and signage - renew - 2023/2024 - Waiheke	Green - On Track	Current status: Investigation and scoping of project options are ongoing in collaboration with the contractor and operations staff. Next steps: Finalising project scoping and initiating procurement for physical works.	Baseline					
			Forecast/Actual					
Open space furniture, fixings, equipment, BBQs and signage - renew - 2024/2025 - Waiheke	Amber - At Risk	Current status: Investigations and scoping is currently underway. Next steps: Complete scoping and investigations and start procurement for physical works.	Baseline					
			Forecast/Actual					
Open space lighting - sports and amenity lighting - renew - Waiheke	Green - On Track	Project completed October 2023.	Baseline					
			Forecast/Actual					
Open space toilets - develop and renew stage two - Waiheke	Green - On Track	Current status: The physical works at Oneroa Village toilet have been completed. Investigation is underway at Omiha Beach toilet which has been closed due to recent slips. Next steps: Continue with investigation and design for Omiha Beach toilet and provide an update to stakeholders by February 2024.	Baseline					
			Forecast/Actual					
Parks LDI quick response fund - Waiheke	Green - On Track	Project completed October 2023.	Baseline					
			Forecast/Actual					
Rakino Hall relocation - Rakino Island	Green - On Track	Current status: the site investigations and initial planning assessment are under way. Next steps: develop Concept options after stakeholder consultation is completed.	Baseline					
			Forecast/Actual					
Tawaipareira Reserve stage two - replacement of play space, bike track, new flying fox	Green - On Track	Current status: Physical works have completed onsite and site has been handed over. Planting and vehicle crossing upgrade expected to commence in May 2024. Next steps: Monitor during defects liability period	Baseline					
			Forecast/Actual					



PROJECT DELIVERY STATUS

		Initiate	Preliminary design	Detailed Design	Tender Process	Construction	Defects
		2023/2024 - Current year					
Activity Name	RAG	Local Board Commentary	Timeline	Q1	Q2	Q3	Q4
Te Whau Esplanade Reserve - stabilise Hitapa track	Amber - At Risk	<p>Current status: This project is on hold. A walkover of the site with internal geotechnical specialists in October 2019 confirmed there are limited works required relating to slip repairs. This track renewal will be bundled with the track renewal programme, enabling a renewal of the walking track in its entirety. The project remains on hold until the landslips have been repaired. Resource consent has been extended to allow physical works to be completed in future years. Next steps: An existing design for the upgrade is being reviewed and cost. Once the slips have been remediated, work can be planned with the Waiheke Local Board.</p>	Baseline				
			Forecast/Actual				
Tracks and pathways - renew - 2021/2022+ - Waiheke	Green - On Track	<p>Current status:</p> <p>Priority 4: Matiatia Owhanake (Matiatia Wharf to Owhanake Bay) - Track completed.</p> <p>Priority 5: Te Aroha Walkway - Resource consent lodged and awaiting decision. Reprioritising projects with the local board.</p> <p>Priority 6: Glenbrook Reserve (Okoka Road through Glenbrook Reserve to Glenbrook Road - Resource consent granted. Physical works tender is currently being procured with the successful supplier. Reprioritising projects with the local board.</p> <p>Priority 11: Matiatia to Owhanake sidetrack (The entrance is opposite the car rental at Matiatia and traverses past the car garaging business to Delamore Drive) - Resource consent granted. Physical works tender is currently being procured with the successful supplier. Reprioritising projects with the local board.</p> <p>Priority 13: Trig Hill to Awaawaroa Bay- Resource consent granted. Physical works tender is currently being procured with the successful supplier. Reprioritising projects with the local board.</p> <p>Priority 14: Te Wharau Bay - Adjacent to the toilet - Resource consent lodged awaiting decision. Reprioritising projects with the local board.</p> <p>Priority 15: Te Wharau Bay - Southern Bay access - Resource consent lodged awaiting decision. Reprioritising projects with the local board.</p> <p>Priority 17: Park Point (From Church Bay Farm along the coast to Te Wharau Bay - Resource consent lodged awaiting a decision. Reprioritising projects with the local board.</p> <p>Next steps:</p> <p>Priority 2: Matiatia Owhanake (Matiatia Wharf to Owhanake Bay) - continue to build track during July.</p> <p>Priority 5: Te Aroha Walkway - Procuring physical works and award to the successful tenderer. Reprioritising projects with the local board.</p> <p>Priority 6: Glenbrook Reserve (Okoka Road through Glenbrook Reserve to Glenbrook Road - next to Petra's House.) - Reprioritising projects with the local board.</p>	Baseline				



PROJECT DELIVERY STATUS

			Initiate	Preliminary design	Detailed Design	Tender Process	Construction	Defects
			2023/2024 - Current year					
Activity Name	RAG	Local Board Commentary	Timeline		Q1	Q2	Q3	Q4
Tracks and pathways - renew - 2022/2023 - Waiheke	Amber - At Risk	Current status: Project to be On Hold.	Baseline					
			Forecast/Actual					
Waiheke - remediate 2023 storm and cyclone damaged assets	Green - On Track	Current status: Arrangements are being made for a site visit involving stakeholders to initiate the scoping process. Next steps: Coordinate a site visit with the engineer and proceed to award the design contract.	Baseline					
			Forecast/Actual					
Waiheke - Urban Forest (Ngahere) Strategy - Growing Phase	Green - On Track	Current status: The urban forest specialist is scheduled to engage in consultations with the Waiheke Local Board regarding recommendations for the action plan. Next steps: The next steps involve the identification of planting locations on a map and the initiation of procurement for physical works.	Baseline					
			Forecast/Actual					
Waiheke Community Art gallery - replacement art gallery floor	Green - On Track	Project completed September 2023.	Baseline					
			Forecast/Actual					
Waiheke Library - refurbish building	Green - On Track	Current status: Pricing for physical works currently underway. Next steps: Complete procurement of physical works contractor.	Baseline					
			Forecast/Actual					
Walkways and paths - Renewal - Waiheke	Green - On Track	Current status: The project is currently undergoing the scoping phase in collaboration with an engineer and various stakeholders. Next steps: The engineer will advance to the concept design phase as part of the project's progression.	Baseline					
			Forecast/Actual					