

Waiheke Local Board Workshop Agenda

Date of Workshop: Wednesday 31 January 2024

Time: 10:30

Location: Waiheke Local Board, 10 Belgium Street; MS Teams

Time	Workshop Item	Governance role	Purpose	Presenter(s)	Proposed Outcome(s)
10:30	<p>Infrastructure & Environmental Services (IES) monthly update</p> <p>Attachments</p> <p>Waiheke Climate Activation presentation</p> <p>Waiheke Waterways presentation</p>	Keeping informed	Informal dissemination	<p>Kartik Bhat <i>IES Relationship Advisor</i></p> <p>Greer Rasmussen <i>Low Carbon Specialist</i></p> <p>Donna Carter <i>Healthy Waters Specialist</i></p>	To update members on various IES programs and projects including the Climate Activation and Waiheke Waterways initiatives

Governance Role

1. Accountability to the public
2. Engagement
3. Input to regional decision-making
4. Keeping informed
5. Local initiative / preparing for specific decisions
6. Oversight and monitoring
7. Setting direction / priorities / budget

Role of Workshop:

- (a) Workshops do not have decision-making authority.
- (b) Workshops are used to canvass issues, prepare local board members for upcoming decisions and to enable discussion between elected members and staff.
- (c) Workshops are not open to the public as decisions will be made at a formal, public local board business meeting.
- (d) Members are respectfully reminded of their Code of Conduct obligations with respect to conflicts of interest and confidentiality.
- (e) Workshops for groups of local boards can be held giving local boards the chance to work together on common interests or topics

Waiheke Local Board Workshop Proceedings

Workshop record of the Waiheke Local Board held in person and via Teams on Wednesday 31 January 2024, commencing at 10:30am

Member attendance:

Cath Handley (Chair)	Bianca Ranson (Deputy)	Kylee Matthews	Robin Tucker	Paul Walden
Present	Present	Present	Present	Absent

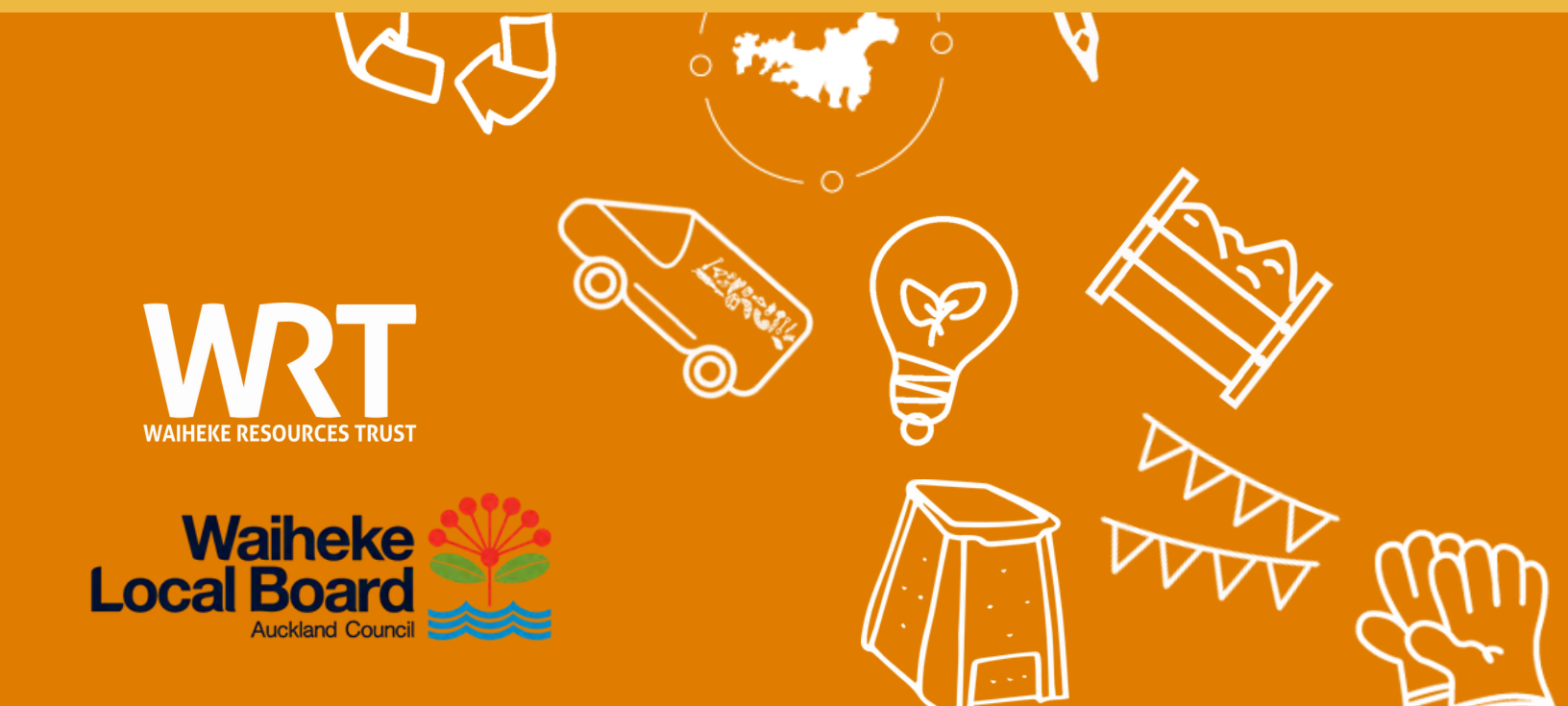
Staff present: Janine Geddes (MS Teams), Lorraine Gropper and Rebecca Law

Time	Workshop Item	Governance role	Purpose	Presenter(s)	Proposed Outcome(s)
10:30	<p>Infrastructure & Environmental Services (IES) monthly update</p> <p>Attachments Waiheke Climate Activation presentation Waiheke Waterways presentation</p>	Keeping informed	Informal dissemination	<p>Kartik Bhat <i>IES Relationship Advisor</i></p> <p>Greer Rasmussen <i>Low Carbon Specialist</i></p> <p>Donna Carter <i>Healthy Waters Specialist</i></p>	Members were updated on the Climate Activation and Waiheke Waterways initiatives supported by Waiheke Resources Trust (WRT).



Waiheke Climate Activation

Waiheke Local Board Workshop Jan 2024



WRT
WAIHEKE RESOURCES TRUST

Waiheke Local Board
Auckland Council



Waiheke Climate Activation

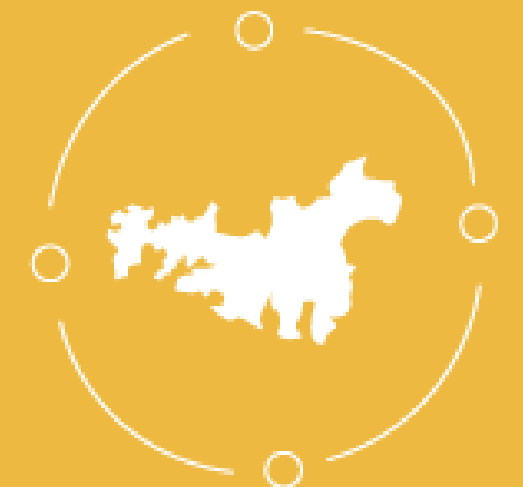
To contribute to global, national, regional and local climate goals

Global goal

Ensuring temperature rise is below 1.5c

Regional goal – Te Tāruke-ā-Tāwhiri

Reduce greenhouse gas emission's by 50% by 2023 and net zero by 2050



Waiheke Climate Activation

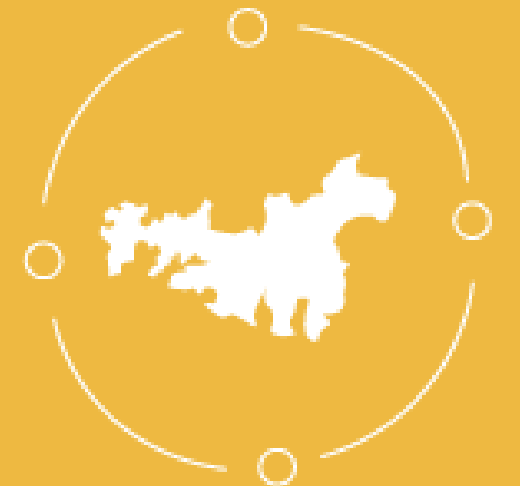
To contribute to global, national, regional and local climate goals

Waiheke Local Boards goal

Carbon positive by 2040*

- completing a Waiheke Local Board Area Carbon Inventory Model by 2023
- achieving a 100% circular food economy with 100% of all food and green waste composted on-island by 2025
- eliminating the environmental and economic impacts of fossil fuel based transport by 2030
- halving carbon emissions by 2030 (from 2016 baseline)
- reducing the average carbon footprint per resident to 2.5 tonnes by 2030
- achieving carbon positivity by 2040

**Goes beyond achieving net-zero carbon emissions to create an environmental benefit by removing additional carbon dioxide from the atmosphere*



Our proposal

One year contract
Project start date: 1st July 2023

Climate action content package

- Updated and redesigned Welcome to Waiheke pack, including climate action information and individual actions. The printing costs provided in-kind by WRT
- Website collateral for a digital presence
- Social media campaign scheduled to run across the year
- Video that encourages community engagement in climate action for social media
- Fullers on-board advertising for 19 weeks (additional \$3,000 budget needed)
- Acknowledgment of Waiheke Local Board and their commitment to Climate Action Plan

Total: \$9,000 / \$12,000

Project delivery and Community Hui

Integration with existing WRT projects

Community hui to assess progress of the Climate Action Plan, mapping out what is currently happening, planning to be implemented and what areas need prioritisation. This can give focus to Local Board spends going forward as well as community efforts.

IP developed through this project will be shared at the hui

Total: \$6,000



Grant writing

Support for WRT to seek additional climate related funding sources applied to the benefit of Waiheke Island

Total \$5000

Climate advisor for WITI (Waiheke Island Tourism Inc)

Attend and present at monthly WITI meetings providing consultation, advise and recommendations for members. Intention to move to other associations in 2024.

Total \$5000

GIS and Reporting

Apply a climate lens to the work of WRT's Regenerate Waiheke sub-catchments project
GIS mapping of catchments and engagement with local areas
WRT to seek additional ministry funds for catchments work

Total \$5000

Climate Action - Content package

Ready to take an action?
FREE resources are available!

FutureFit.nz
Find your carbon footprint

LiveLightly.nz
Tips to take climate action

Flood Viewer
Keep your home safe!

WRT 



Take Climate Action
**Protect your home,
know your flood risk!**



WRT

Take Climate Action
Try plant-based kai



WRT

Ready to take an action?
FREE resources are available!

FutureFit.nz
Find your carbon footprint

LiveLightly.nz
Tips to take climate action

Vegan Society NZ
Recipes and support going plant-based

WRT 



Take Climate Action
The Waiheke Way



WRT

Container ✓
Cup ✓
Cutlery ✓

**Check! You're
GOOD TO GO!**

When you visit Waiheke
always bring your reusables
with you for tasty and
waste-free takeaways!



WRT

Kai / Food

- Try delicious plant-based food
- Eat locally and seasonally
- Compost your food scraps and garden waste



WRT

Neke / Move

- Bike to work / school one day a week
- Take public transport instead of driving
- Offset your carbon emissions for any flights you take



WRT



IT'S YOUR COMMUNITY

Waiheke is a vibrant community with lots to get involved with. Here are some great ideas for places and things you might like to go and check out.

Waiheke Sustainability Centre
0 Mako St, Oneroa
Weekdays 9 – 4pm
Ph 09 372 2915 | info@wrt.org.nz

Ostend Market
Ostend Hall, Belgium St
Every Saturday 7.30am – 1pm
Rain or shine

Waiheke Library
Up the top of Oneroa at Artworks
2 Korora Rd, Oneroa
They have loads of information available and free internet too

Citizen Advice Bureau
141 Ocean View Rd, Oneroa
Phone 09 372 8640

Local Board Service Centre
10 Belgium St, Ostend
Phone 09 372 5099
A good place to go for Auckland Council information

Volunteer with the WRT
There are loads of ways to get involved! To learn more email info@wrt.org.nz

Waiheke Collective
A collective of people and organisations working together to activate and amplify efforts for a healthy and thriving Waiheke natural environment.
waihekecollective@gmail.com

Community Networks Waiheke
CNW is a network of, and collective voice for, non profit agencies and support groups. facebook.com/community-networkswaiheke

Residents Groups
There are many residents groups that meet regularly, run events, and are useful for issues relating to your particular corner of Waiheke. Call the WRT and we'll direct you to the appropriate group
09 372 2915

Waiheke Resources Trust
Volunteering is a really great way to get involved in your community. There's heaps of opportunities for volunteers on the island. For more info visit
• wrt.org.nz/take-action/volunteer
• foreverwaiheke.com/madabout-waiheke

Waiheke Resources Trust is here to help you live sustainably. We're your one stop shop for information about environmental restoration, waste minimisation, social connection and so much more. Give us a call or visit 9am – 4pm weekdays, to find out what's happening and for information about any of the topics in this pack.

Waiheke Local Board | 09 372 2915 | info@wrt.org.nz
Waiheke Sustainability Centre, 0 Mako St
wrt.org.nz | Facebook: The Waiheke Resources Trust

PLACES TO GO IN OUR COMMUNITY

Waiheke is a vibrant community with lots to get involved with. Here are some ideas for places to connect.

Waiheke Sustainability Centre
0 Mako St, Oneroa
Weekdays 9 – 4pm
Ph 09 372 2915 | info@wrt.org.nz

Ostend Market
Ostend Hall, Belgium St
Every Saturday 7.30am – 1pm
Rain or shine

Waiheke Library
Up the top of Oneroa at Artworks
2 Korora Rd, Oneroa
They have loads of information available and free internet too

Citizen Advice Bureau
141 Ocean View Rd, Oneroa
Phone 09 372 8640

Local Board Service Centre
10 Belgium St, Ostend
Phone 09 372 5099
A good place to go for Auckland Council information

Volunteer with the WRT
There are loads of ways to get involved! To learn more email info@wrt.org.nz

Waiheke Collective
A collective of people and organisations working together to activate and amplify efforts for a healthy and thriving Waiheke natural environment.
waihekecollective@gmail.com

Community Networks Waiheke
CNW is a network of, and collective voice for, non profit agencies and support groups. facebook.com/community-networkswaiheke

Residents Groups
There are many residents groups that meet regularly, run events, and are useful for issues relating to your particular corner of Waiheke. Call the WRT and we'll direct you to the appropriate group
09 372 2915

Waiheke Resources Trust
Volunteering is a really great way to get involved in your community. There's heaps of opportunities for volunteers on the island. For more info visit
• wrt.org.nz/take-action/volunteer
• foreverwaiheke.com/madabout-waiheke

Waiheke Resources Trust is here to help you live sustainably. We're your one stop shop for information about environmental restoration, waste minimisation, social connection and so much more. Give us a call or visit 9am – 4pm weekdays, to find out what's happening and for information about any of the topics in this pack.

Waiheke Local Board | 09 372 2915 | info@wrt.org.nz
Waiheke Sustainability Centre, 0 Mako St
wrt.org.nz | Facebook: The Waiheke Resources Trust

WE'RE A KAI CONSCIOUS COMMUNITY

The average NZ household is throwing out 86 kilos and \$664 worth of uneaten food a year.

All that food waste has huge environmental, social and economic consequences.

When you consider how much work, land, water, energy, transport and time goes into getting food to our plates, it makes sense to eat it, not throw it away.

Waiheke Resources Trust (WRT) runs a community food waste reduction project called Kai Conscious that hosts food waste reduction workshops and a community lunch each Friday at the Sustainability Centre where rescued food from local supermarkets and restaurants is turned into nutritious kai for all. In January 2021, the cafe had diverted over 37,000 tonnes of food waste from landfill. Volunteers can come from 11am to help prepare the lunch, which is served at 1pm. WRT has heaps of resources and tools on its website wrt.org.nz and check out Love Food Hate Waste NZ on Facebook for interesting links and great tips.

EASY THINGS YOU CAN DO

- Plan your meals and buy only what you need.
- Cook only what you will eat and let people serve themselves.
- Use your freezer as a pause button: many foods can be frozen before they go bad and defrosted to use.
- Store foods by using containers, jars, bag clips and honeywags to keep food fresh.
- Eat your leftovers for lunch.
- Compost your food scraps or feed them to chickens.
- Donate your edible left over food to the community fridge at the Sustainability Centre or Community Pantry at Waiheke Budgeting Service.

The Waiheke Resources Trust (WRT) runs a community food waste reduction project called Kai Conscious that hosts food waste reduction workshops and a community lunch each Friday at the Sustainability Centre where rescued food from local supermarkets and restaurants is turned into nutritious kai for all. In January 2021, the cafe had diverted over 37,000 tonnes of food waste from landfill. Volunteers can come from 11am to help prepare the lunch, which is served at 1pm. WRT has heaps of resources and tools on its website wrt.org.nz and check out Love Food Hate Waste NZ on Facebook for interesting links and great tips.

Waiheke Resources Trust is here to help you live sustainably. We're your one stop shop for information about environmental restoration, waste minimisation, social connection and so much more. Give us a call or visit 9am – 4pm weekdays, to find out what's happening and for information about any of the topics in this pack.

Waiheke Local Board | 09 372 2915 | info@wrt.org.nz
Waiheke Sustainability Centre, 0 Mako St
wrt.org.nz | Facebook: The Waiheke Resources Trust

REDUCE YOUR FOOD WASTE

Waiheke Resources Trust (WRT) runs a community food waste reduction project called Kai Conscious that hosts food waste reduction workshops and a community lunch each Friday at the Sustainability Centre where rescued food from local supermarkets and restaurants is turned into nutritious kai for all. In January 2021, the cafe had diverted over 37,000 tonnes of food waste from landfill. Volunteers can come from 11am to help prepare the lunch, which is served at 1pm. WRT has heaps of resources and tools on its website wrt.org.nz and check out Love Food Hate Waste NZ on Facebook for interesting links and great tips.

EASY THINGS YOU CAN DO

- Plan your meals and buy only what you need.
- Cook only what you will eat and let people serve themselves.
- Use your freezer as a pause button: many foods can be frozen before they go bad and defrosted to use.
- Store foods by using containers, jars, bag clips and honeywags to keep food fresh.
- Eat your leftovers for lunch.
- Compost your food scraps or feed them to chickens.
- Donate your edible left over food to the community fridge at the Sustainability Centre or Community Pantry at Waiheke Budgeting Service.

The Waiheke Resources Trust (WRT) runs a community food waste reduction project called Kai Conscious that hosts food waste reduction workshops and a community lunch each Friday at the Sustainability Centre where rescued food from local supermarkets and restaurants is turned into nutritious kai for all. In January 2021, the cafe had diverted over 37,000 tonnes of food waste from landfill. Volunteers can come from 11am to help prepare the lunch, which is served at 1pm. WRT has heaps of resources and tools on its website wrt.org.nz and check out Love Food Hate Waste NZ on Facebook for interesting links and great tips.

Waiheke Resources Trust is here to help you live sustainably. We're your one stop shop for information about environmental restoration, waste minimisation, social connection and so much more. Give us a call or visit 9am – 4pm weekdays, to find out what's happening and for information about any of the topics in this pack.

Waiheke Local Board | 09 372 2915 | info@wrt.org.nz
Waiheke Sustainability Centre, 0 Mako St
wrt.org.nz | Facebook: The Waiheke Resources Trust

WASTE IS A RESOURCE

Treated in the right way, most of what we are finished using could still be useful.

On Waiheke there is a strong culture of treating our waste as a resource – we compost, we share what we don't need and we recycle. It costs to transport things to and from Waiheke, including rubbish, so it makes sense for us to try and deal with as much of it here as possible.

Waiheke Resources Trust is here to help you live sustainably. We're your one stop shop for information about environmental restoration, waste minimisation, social connection and so much more. Give us a call or visit 9am – 4pm weekdays, to find out what's happening in your area, as well as give you more information about any of the topics in this pack.

Waiheke Local Board | 09 372 2915 | info@wrt.org.nz
Waiheke Sustainability Centre, 0 Mako St
wrt.org.nz | Facebook: The Waiheke Resources Trust

CARE FOR YOUR WASTEWATER SYSTEM

WHY SHOULD I TAKE CARE OF MY WASTEWATER SYSTEM?
First, it can be costly to repair or replace them. Second, it can be unhealthy for you, your family and our waterways should something go wrong with your system. Property owners also have a legal obligation to maintain their wastewater system. It is important that your wastewater system is functioning correctly so it can process your waste effectively.

TAKING CARE OF YOUR SEPTIC TANK
Know your obligations. Primary (older) systems must be inspected no less than every three years and pumped out if required when foam and sludge levels occupy 50% of the tank volume. Secondary and tertiary systems must be maintained by a suitably qualified person every six months. Records of each maintenance action must be retained and made available for inspection by Council or their agents. Reduce water use. Reducing amounts of water entering your system is the most important action to reduce solid waste being flushed into your drainage field. Using water flow limiters on taps, checking water ratings on washing machines and dish-washers, and spacing out showers and clothes washing will help to keep solids in your system from being disturbed and flushed out. Watch out for signs of a system failure, such as murky and smelly puddles on the property or wastewater surfacing. Use enviro-safe products. Not all products on supermarket shelves are safe for your system, even on Waiheke! Chemicals such as bleach, antibacterial and disinfectant cleaners can kill microorganisms in your system, causing it to fail. Also, most household products are designed to cut through hard water that contains a high mineral content. Properties on Waiheke that harvest their water from rain have soft water. Therefore we only need to use around 1/2 the recommended amount of product to achieve the same results.

FREE WORKSHOPS AND \$40 CHECKS
The WRT hosts free wastewater workshops to help you understand how to care for your systems and offers subsidised \$40 system checks. For more info or to book your spot email info@wrt.org.nz

Waiheke Resources Trust is here to help you live sustainably. We're your one stop shop for information about environmental restoration, waste minimisation, social connection and so much more. Give us a call or visit 9am – 4pm weekdays, to find out what's happening in your area and for information about any of the topics in this pack.

Waiheke Local Board | 09 372 2915 | info@wrt.org.nz
Waiheke Sustainability Centre, 0 Mako St
wrt.org.nz | Facebook: The Waiheke Resources Trust

CARE FOR YOUR WASTEWATER SYSTEM

Waiheke Resources Trust is here to help you live sustainably. We're your one stop shop for information about environmental restoration, waste minimisation, social connection and so much more. Give us a call or visit 9am – 4pm weekdays, to find out what's happening in your area and for information about any of the topics in this pack.

Waiheke Local Board | 09 372 2915 | info@wrt.org.nz
Waiheke Sustainability Centre, 0 Mako St
wrt.org.nz | Facebook: The Waiheke Resources Trust

FROM THE SKY TO YOUR TANK

Collect and conserve water with care for the sustainability of our island.

COLLECT
Maximise your rain catchment: clean all guttering regularly, check for leaks and blockages.

CONSERVE

- Keep showers short (2 minutes) and catch run-off in buckets for the garden (ensure the safety of young children around collected water).
- Reuse grey water from washing dishes to flush the toilet or water the garden.
- Turn off taps whilst brushing teeth/shaving/shampooing.
- Use the washing machine for full loads only and reduce cycle to single rinse.
- Reduce the need to wash towels by hanging in direct sunlight after use.
- Mulch your garden and water in the evening to conserve moisture.

AND IF YOU RUN LOW...
Help is at hand but don't wait until your tank is empty before ordering water; monitor your use and order when you have enough left for approximately 14 days; order with one company only and clearly state your current water level and details about tank access. If you are on a government benefit or a low income you may be entitled to financial assistance for water from Work and Income New Zealand – call 0800 559 009.

REGISTERED WATER DELIVERY COMPANIES
Waiheke Water – 372 3192
Wai Water – 372 2021
Island Water – 372 2325
Waiheke Aqua – 372 3080

Waiheke Resources Trust is here to help you live sustainably. We're your one stop shop for information about environmental restoration, waste minimisation, social connection and so much more. Give us a call or visit 9am – 4pm weekdays, to find out what's happening in your area and give you more information about any of the topics in this pack.

Waiheke Local Board | 09 372 2915 | info@wrt.org.nz
Waiheke Sustainability Centre, 0 Mako St
wrt.org.nz | Facebook: The Waiheke Resources Trust

WAIHEKE WATER WISDOM

FOR RESIDENTS AND VISITORS

Waiheke is a non-reticulated community which means we rely on the rain to fill our tanks and our property to dispose of our waste water.

Summer can be dry – these simple tips will help you make your water last and protect the island environment that we treasure.

Waiheke Resources Trust is here to help you live sustainably. We're your one stop shop for information about environmental restoration, waste minimisation, social connection and so much more. Give us a call or visit 9am – 4pm weekdays, to find out what's happening in your area and give you more information about any of the topics in this pack.

Waiheke Local Board | 09 372 2915 | info@wrt.org.nz
Waiheke Sustainability Centre, 0 Mako St
wrt.org.nz | Facebook: The Waiheke Resources Trust

WASTE IS A RESOURCE

Here are a bunch of ideas that can help you follow the waste hierarchy of reducing, reusing and recycling your waste.

Take reusable furniture, clothes and bric a brac to the op shop. The Red Cross at 112 Ocean View Rd Oneroa and WISCA at 85 Ocean Rd, Palm Beach and Community Resources Recovery Park, Ostend. Buy and sell second hand goods at the Ostend Market every Saturday or join local Facebook groups Waiheke Trading, Waiheke Clothing and Waiheke Demolition. Drop excess produce to the Grow stall at the Saturday market or the community fridge at the Sustainability Centre. Check out the Waiheke Island Community Resource Recovery Centre for recycling and upcycling at 108 Ostend Rd, Ostend.

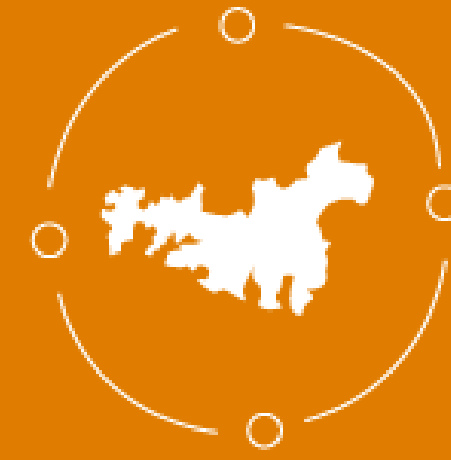
RUBBISH COLLECTION DAYS
The Auckland Council kerbside collection happens on different days depending on where you are. If your collection is on or after a public holiday, it will be one day later that week. Landfill is collected weekly on these days.

MONDAY: ONETANGI, DRAPIU
TUESDAY: ONEROA, BLACKPOOL
WEDNESDAY: PALM BEACH, LITTLE ONEROA
THURSDAY: SURFDALE
FRIDAY: OSTEND, ROCKY BAY
Recycling is collected fortnightly. For info on what's recyclable and your collection days check out: makethemostofwaste.co.nz.

BAGS VS. BINS
On Waiheke you can choose between bags and wheeie bins in how your rubbish is collected. Call the Waiheke Service Centre on (09) 372 5099 for more information. You also have the option to take your rubbish and recycling down to our local Waiheke Community Resource Recovery Park in Ostend directly. The WCRRC has active buyers for all the recyclables they accept and has separate bins for each item ensuring a higher rate and quality of recycling can take place. Most of their buyers are recycling in Aotearoa. Remember it's always better to not make waste in the first place. Ask yourself, "do I really need this?" or "can I get it second hand?" before buying new. Be a conscious consumer and help reduce your household waste.

Waiheke Resources Trust is here to help you live sustainably. We're your one stop shop for information about environmental restoration, waste minimisation, social connection and so much more. Give us a call or visit 9am – 4pm weekdays to find out what's happening in your area, as well as information about any of the topics in this pack.

Waiheke Local Board | 09 372 2915 | info@wrt.org.nz
Waiheke Sustainability Centre, 0 Mako St
wrt.org.nz | Facebook: The Waiheke Resources Trust

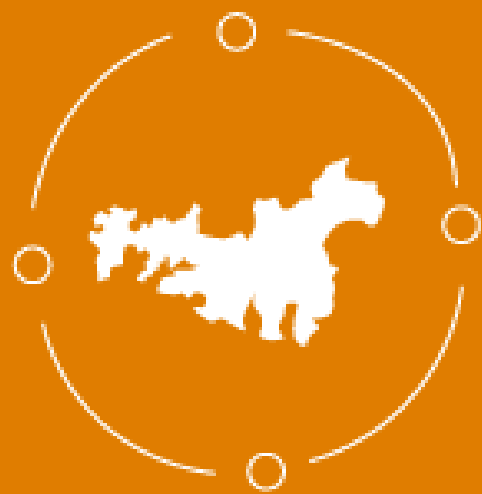


WHAT DOES WAIHEKE
NEED?

What's missing? — What would a food resilient island look like? — What initiatives/projects are needed?

Climate Hui

May 2024



Grant Writing

Auckland Council Climate Grant
WRT and Carbon Neutral Waiheke
To support the Waiheke base line data collection for the
Local Board Climate Action Plan monitoring framework

Auckland Council Climate Grant
Kai for Community Festival
Tanya Batt

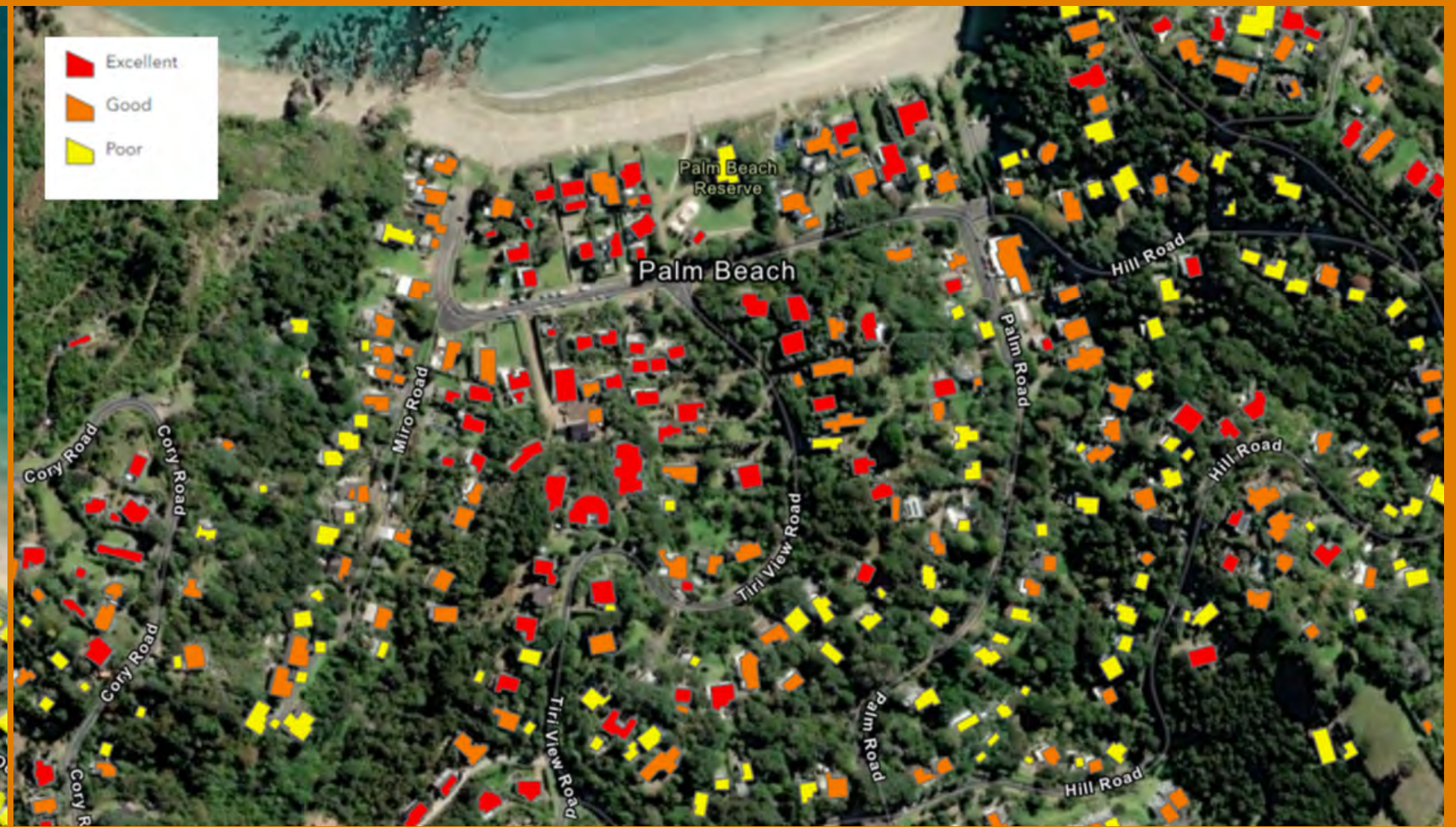
Sargood Bequest
Regrow program - Soil to Fork schools program

Advising
Wish Trust - Compost upscaling

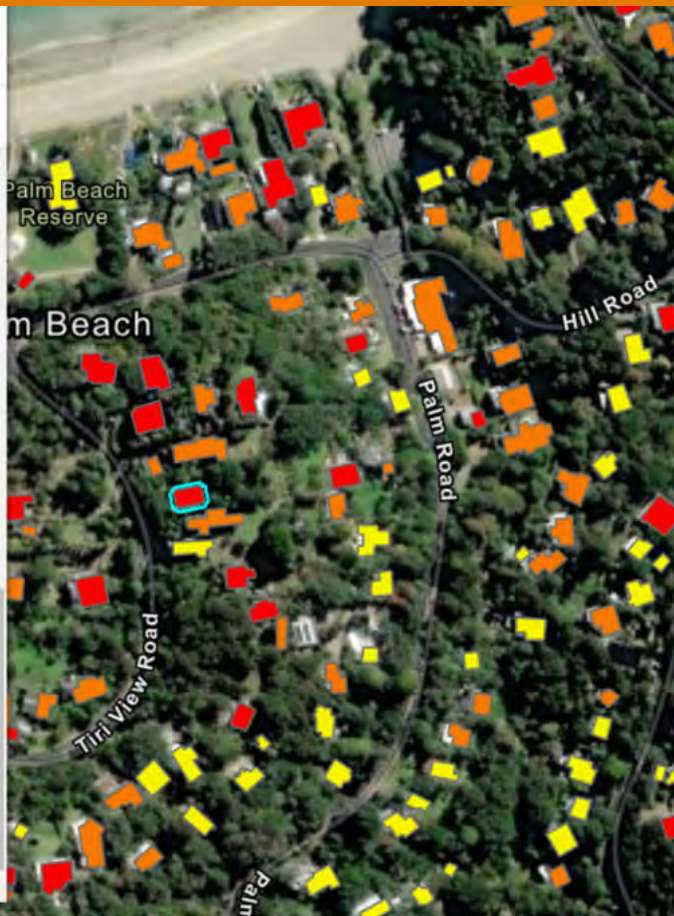
WITI

2 x WRT staff to join each WITI monthly hui



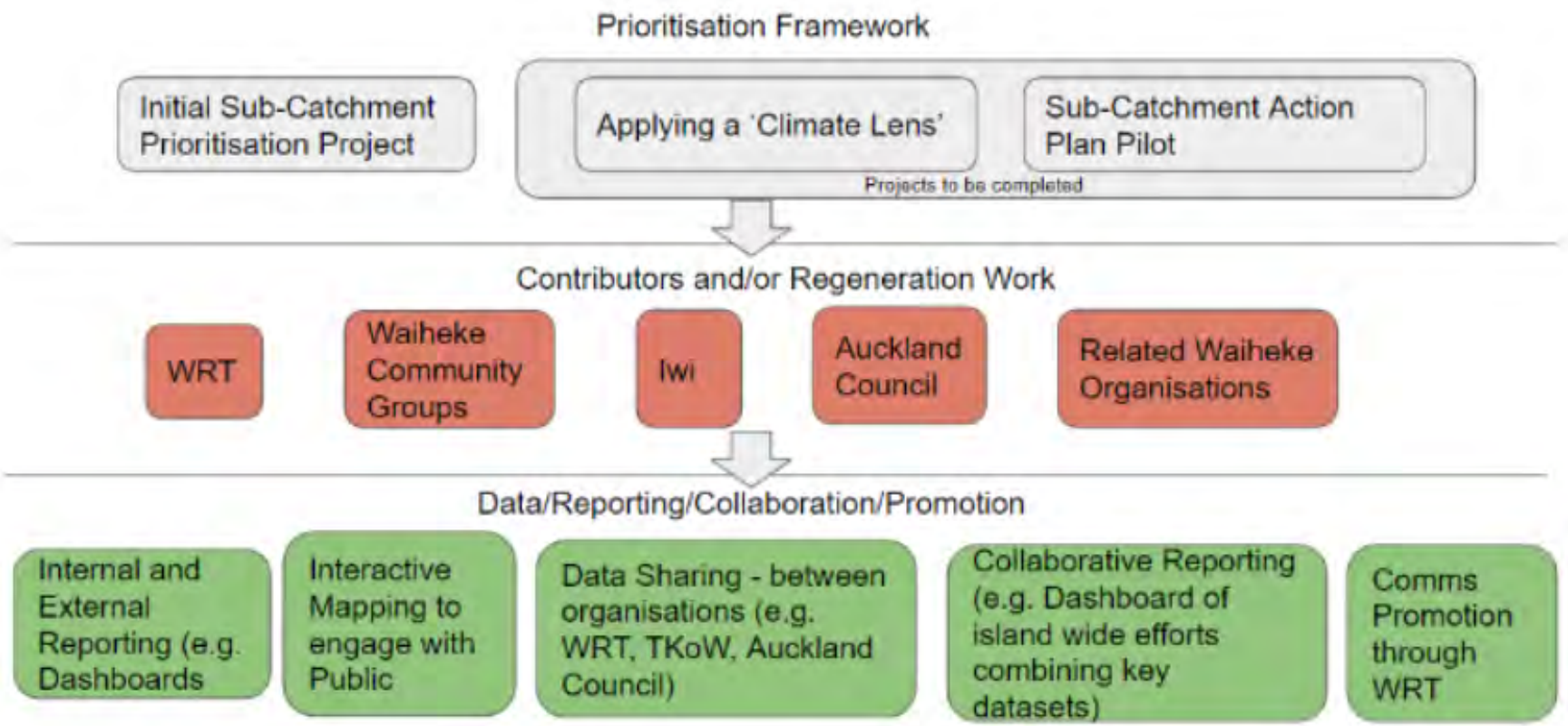


Property	Value
Electrical_solar_2kwh_system	2359.34
Electrical_solar_3kwh_system	3370.48
Electrical_solar_4kwh_system	4718.68
Electrical_solar_5kwh_system	6066.87
Electrical_solar_6kwh_system	7415.07
Cash_savings_2kwh_system	707.8018239212741
Cash_savings_3kwh_system	1011.1454627446772
Cash_savings_4kwh_system	1415.6036478425483
Cash_savings_5kwh_system	1820.061832940419
Cash_savings_6kwh_system	2224.52001803829
kwh_per_useful_solar_rad	168.52
Shape_Area	121.0830078125
Shape_Length	45.44680179058894

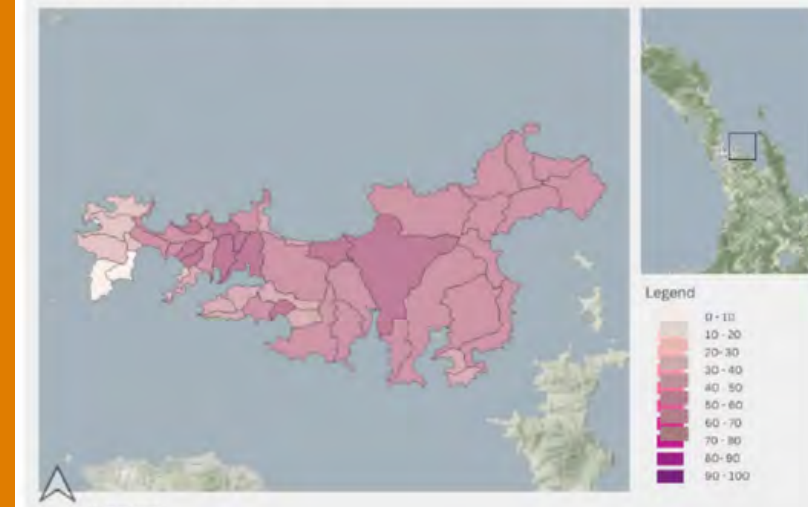


Waiheke Solar Potential

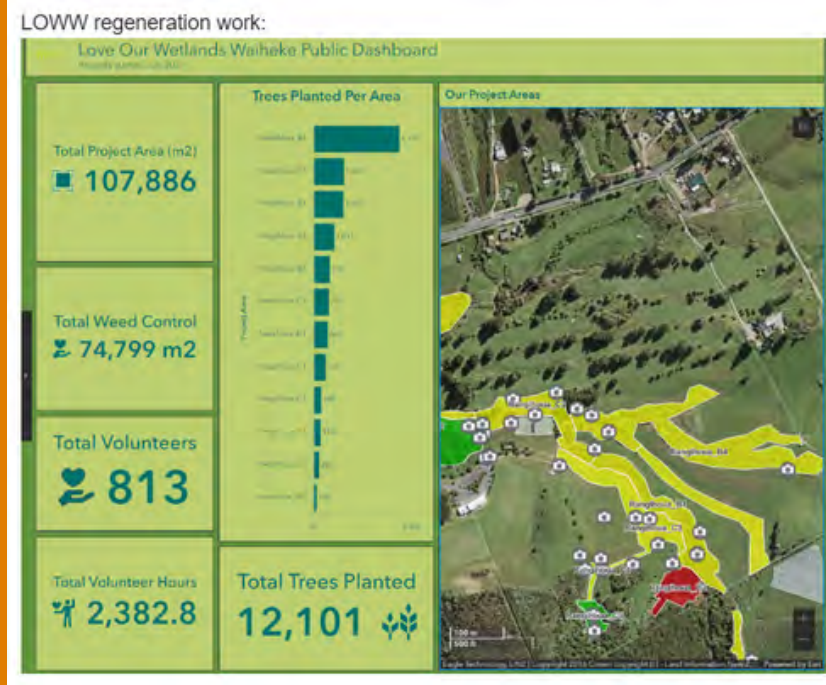
"Regenerate Waiheke"



Example of deprivation scoring across the island (Census data):
Deprivation (score)



	Ostend0 1		Ostend0 2		Ostend0 3		Anzac	
Water temperature	15.0	Good	15.9	Good	16.0	Good	16.2	Good
Water clarity	61 cm	Good	21 cm	Of concern	33 cm	Fair	30	Fair
pH	7.0	Excellent	8.0	Excellent	7.0	Excellent	7.0	Excellent
Dissolved oxygen	4.5	Fair	6.0	Fair	5.0	fair	8.0	Good
Nitrate	0.0 mg/L	Excellent	0.0 mg/L	Excellent	0.7 mg/L	Good	0.8 mg/L	Good
Phosphorous	0.2 mg/L	Fair	0.025 mg/L	Good	0.15 mg/L	Fair	0.15 mg/L	Fair
Ammonia	0.0 mg/L	—	0.0 mg/L	—	0.12 mg/L	—	0.25 mg/L	—



Geography and Land Use Characteristics
Stretching from the top of View Road, down the valley to Anzac Bay, this sub-catchment includes residential housing, larger parcels of lifestyle blocks, commercial areas (Placemakers and Waiheke Living) and the main industrial area of Waiheke Island.

Waterways and Wetlands
The Tawaipareira creek runs from the upper catchment, through the valley to the wetland sandwiched between the industrial areas east and west, and north of Tawaipareira Reserve and the refuse station. Another small stream runs from beside the school and connects into the wetland. Other small wetlands are present on the edge of the mangroves in Anzac Bay.

Significant Publicly Owned Land/Reserves
Tawaipareira Reserve - includes the skate park and the Wetland to the north of the reserve.

Other
Waiheke Recovery Park (dumpprefuse transfer station)
Light to heavy industry

People/Human Activity Overview
Population (2018 Census)
Estimated Population: 589
Deprivation level (Across NZ 1 is low, 10 is high. Source: 2018 Census deprivation data averaged across the sub-catchment)
5.8
Visitor Attractions
No major visitor attractions
Schools
1 - Waiheke Primary School
Medical Facilities
No medical facilities

Regenerate Waiheke

Whats next?

Hui planning

Relationship building with existing climate action groups

More grant writing

Continued intergration into WRT projects

Continued development of Regenerate Waiheke

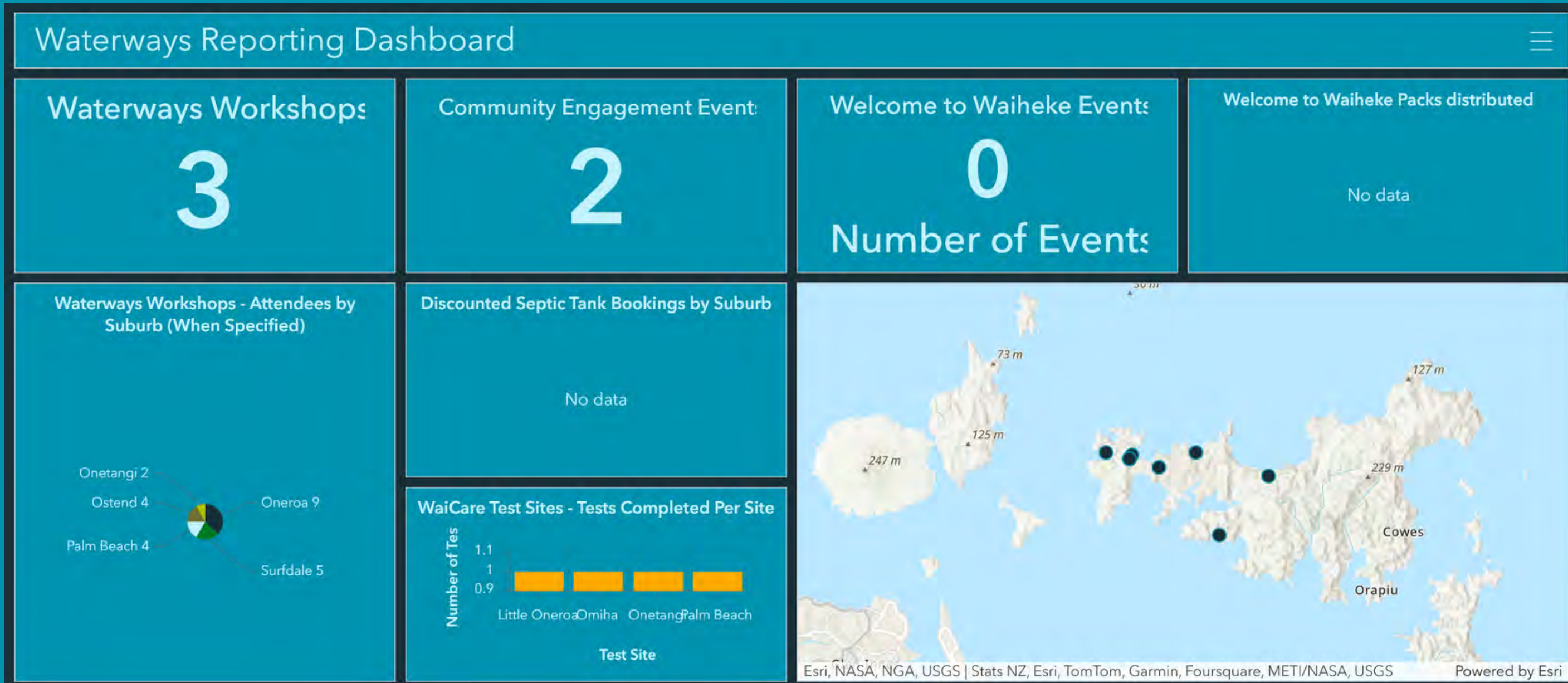
WRT WAIHEKE
RESOURCES
TRUST

Waiheke Waterways

Waiheke
Local Board
Auckland Council



We're currently working on an interactive GIS map to record and report our engagement and KPIs





Our
eDNA
journey

WRT



Finding kākahi at Little Oneroa Stream

This year's community event

Let's talk Kākahi!

With guest Neil Henderson from Kaipātiki Project

Sunday 11th Feb
11am to 2pm - Free

Join WRT to discover the story of the kākahi (freshwater mussels) in Little Oneroa stream.

Meet at Little Oneroa Reserve by the playground for an interactive stream walk and talk. Followed by free kai and prize giveaways!

Let's all learn more so we can protect this taonga species.

Contact us for more info:
info@wrt.org.nz
09 372 2915



WRT

Waiheke
Local Board
 Auckland Council

Environment
Hubs
Aotearoa

Kaipātiki Project
share in nature's revival

Article in the Gulf News

12

KĀWEPURONGO / NEWS

Gulf News, 23 November 2023

eDNA testing discovers native freshwater mussel at Little O'

The Waiheke Resources Trust has completed the first in a series of environmental DNA studies of Little Oneroa Stream which has revealed a surprising number of species that are currently present in the ecosystem. The study is being done alongside Wai Tuwhera o te Taiao/Open Waters Aotearoa, a programme that supports and connects local initiatives with science.

Open Waters Aotearoa says when different species move through the environment, they leave behind traces of DNA by taking water samples. By collecting and sequencing the DNA, it can reveal all the fishes, birds, insects, plants and animals present in the ecosystem.

Waiheke Resources Trust's Nathalya Larson says they found DNA of over 230 species of flora, fauna, plants and algae. Most surprisingly, they found kākahi, a native freshwater mussel.

"Kākahi are an at-risk, declining species and an indicator species of a healthy freshwater ecosystem. Other mahinga kai species are also present, such as tuna and kōura."

Nathalya says that the kākahi, or freshwater mussels, were a valuable food resource for Māori. They are now classified as a declining species, both in Aotearoa and worldwide. This decline has been attributed to the loss of habitat associated with river regulation, eutrophication, and other types of pollution, and possibly through the loss of the host fish on which the completion of the life cycle depends.



The Waiheke Resources Trust's Nathalya Larson is conducting an environmental DNA study of the Little Oneroa Stream. The report will show what lives in the stream and give a comprehensive understanding of its ecosystem.

Now that the trust has the baseline data, they are looking to apply for extra funding to complete more eDNA tests along the stream to gain a more comprehensive idea of the diversity of species and possible pest species that live in the Little Oneroa stream.

"This will help us to restore, monitor, and explore this catchment. When we learn more about our local ecosystems, we can make better decisions," says Nathalya.

"Scientists are studying whether kākahi rafts [floating devices containing mussels] can assist water restoration through biofiltration. If so, these kākahi could become part of the solution to return degraded, turbid, shallow lakes towards their original clear, native aquatic plant-dominated state."

At the same time, a NIWA bio-remediation project conducted research on Lake Ohnewai, near Huntly, and confirmed kākahi could filter-feed on rafts in this de-

Gulf News, 23 November 2023

KĀWEPURONGO / NEWS

13

graded lake, supporting the theory that, in large numbers, kākahi have a positive influence on water quality. These rafts included heavy-duty plastic baskets that were offset to maximise water exchange and can be added to by lake sediment, hessian matting or felting.

NIWA marine and freshwater ecologist Mark Fenwick has worked on kākahi genetics for over 20 years and says the study is critically important. "It shows that in the future, we could stock rafts with thousands of young, farmed mussels bred from surviving resident mussels to promote lake and river restoration and also build up kākahi populations," he says.

During the project, the NIWA team put adult kākahi on rafts elevated from the bottom waters to see if that affected how much water they could filter feed.

Fenwick says when the native freshwater mussels take in sediment, it passes through their systems, helping to clear the water and significantly improving kākahi survival rates.

"In very challenging environmental conditions the kākahi rafts promoted their survival rates to 97 percent," he says.

The Waiheke Resources Trust team is planning to repeat the test to get a more comprehensive idea of what lives on the stream, says Nathalya.

"We're sharing this information with our

community, Ngāti Pāoa, monitoring groups and Auckland Council. This is certainly a reason to celebrate," says Nathalya.

The trust will share the results of this study on Friday 8 December, at the Mak-

ing Room for Rivers hui at the Sustainability Centre in Mako Street. Starting at 6:30pm, the event will feature Forest and Bird's freshwater advocate Tom Kay. •
Silvia Massa

Work underway to widen Causeway



Work is underway to widen the shoulder area on the eastern side of Causeway Road. An Auckland Transport spokesman says this will create a 1.5-metre-wide sealed shoulder from the Waiheke Boating Club to Shelly Beach Road. The goal of the works, which are a joint project between Auckland Transport and the Waiheke Local Board, is to realign the intersection of Shelly Beach

and Causeway Roads to improve visibility and control speeds turning into or out of Shelly Beach Road. Contractors will also install rubber wheel stops to separate the shoulder from the live traffic lane and trim back some of the pōhutukawa trees along the roadside. Work began on Monday 20 November and Auckland Transport expects it be finished by the end of January. •



Collaborating with Forest and Bird



Making Room for Rivers



Tom Kay, Freshwater Advocate, will talk about how river management in New Zealand has worsened the impacts of flooding and degraded the health of our rivers. He'll discuss the impacts of flood protection engineering on our rivers and communities, and outline the approach we could be taking instead.



CELEBRATING
100
YEARS 1923-2023

Waiheke

6:30pm, Friday 8 December
Sustainability Centre,
1A Mako Street, Oneroa

Online workshop and content collateral



Splash to Sustainability

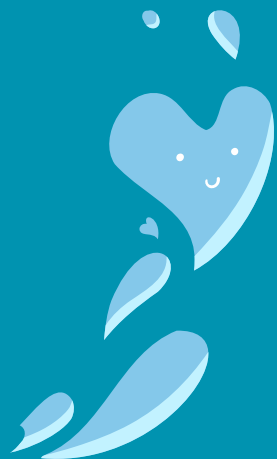
BECOME A WATER SAVING HERO!

WRT

HOW TO BE A WATER SAVING HERO THIS SUMMER

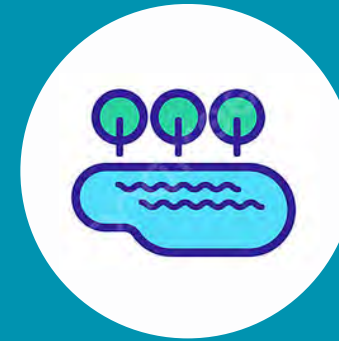
Waiheke Waterwise

Waiheke Resources Trust



WRT WAIHEKE RESOURCES TRUST

WAIHEKE WATERWISE - SAVE WATER! AND MONEY



Water and your septic system



Check your flow



Check for leaks



Water-saving tips

AND IF YOU RUN OUT?

Don't stress, these things happen. Thanks to Waiheke Local Board, **Community Water Stations** can be accessed for free at the locations listed below. Look for the blue tap and please bring your own container



ONETANGI SPORTS PARK
OUTSIDE THE MAIN
BUILDING BY THE CARPARK



MĀTIATIA WHARF
CARPARK
FAR EASTERN CORNER
BEHIND AHIPAO



Our Welcome to Waiheke Packs are under redevelopment

IT'S YOUR COMMUNITY

Waiheke is a vibrant community with lots to get involved with. Here are some great ideas for places and things you might like to go and check out.

Waiheke Sustainability Centre
0 Mako St, Oneroa
Weekdays 9 - 4pm
Ph 09 372 2915 | info@wrt.org.nz

Ostend Market
Ostend Hall, Belgium St
Every Saturday 7:30am - 1pm
Rain or shine

Waiheke Library
Up the top of Oneroa at Artworks
2 Korora Rd, Oneroa
They have loads of information available and free internet too

Citizen Advice Bureau
141 Ocean View Rd, Oneroa
Phone 09 372 8640

Local Board Service Centre
10 Belgium St, Ostend
Phone 09 372 5099
A good place to go for Auckland Council information

Volunteer with the WRT
There are loads of ways to get involved! To learn more email info@wrt.org.nz

Waiheke Resources Trust is here to help you live sustainably. We're your one stop shop for information about environmental restoration, waste minimisation, social connection and so much more. Give us a call or visit 9am - 4pm weekdays, to find out what's happening and for information about any of the topics in this pack.

Waiheke Local Board | 09 372 2915 | info@wrt.org.nz
Waiheke Sustainability Centre, 0 Mako St
wrt.org.nz | Facebook: The Waiheke Resources Trust

PLACES TO GO IN OUR COMMUNITY

Waiheke is a vibrant community with lots to get involved with. Here are some ideas for places to connect.

Waiheke Sustainability Centre
0 Mako St, Oneroa
Weekdays 9 - 4pm
Ph 09 372 2915 | info@wrt.org.nz

Ostend Market
Ostend Hall, Belgium St
Every Saturday 7:30am - 1pm
Rain or shine

Waiheke Library
Up the top of Oneroa at Artworks
2 Korora Rd, Oneroa
They have loads of information available and free internet too

Citizen Advice Bureau
141 Ocean View Rd, Oneroa
Phone 09 372 8640

Local Board Service Centre
10 Belgium St, Ostend
Phone 09 372 5099
A good place to go for Auckland Council information

Volunteer with the WRT
There are loads of ways to get involved! To learn more email info@wrt.org.nz

Waiheke Collective
A collective of people and organisations working together to activate and amplify efforts for a healthy and thriving Waiheke natural environment.
waihekecollective@gmail.com

Community Networks Waiheke
CNW is a network of, and collective voice for, non profit agencies and support groups. facebook.com/communitynetworkswaiheke

Residents Groups
There are many residents groups that meet regularly, run events, and are useful for issues relating to your particular corner of Waiheke. Call the WRT and we'll direct you to the appropriate group
09 372 2915

VOLUNTEERING
Volunteering is a really great way to get involved in your community. There's heaps of opportunities for volunteers on the island. For more info visit
• wrt.org.nz/take-action/volunteer
• foreverwaiheke.com/madabout-waiheke

Waiheke Resources Trust is here to help you live sustainably. We're your one stop shop for information about environmental restoration, waste minimisation, social connection and so much more. Give us a call or visit 9am - 4pm weekdays, to find out what's happening and for information about any of the topics in this pack.

Waiheke Local Board | 09 372 2915 | info@wrt.org.nz
Waiheke Sustainability Centre, 0 Mako St
wrt.org.nz | Facebook: The Waiheke Resources Trust

WE'RE A KAI CONSCIOUS COMMUNITY

The average NZ household is throwing out 86 kilos and \$664 worth of uneaten food a year.

All that food waste has huge environmental, social and economic consequences.

When you consider how much work, land, water, energy, transport and time goes into getting food to our plates, it makes sense to eat it, not throw it away.

Waiheke Resources Trust is here to help you live sustainably. We're your one stop shop for information about environmental restoration, waste minimisation, social connection and so much more. Give us a call or visit 9am - 4pm weekdays, to find out what's happening and for information about any of the topics in this pack.

Waiheke Local Board | 09 372 2915 | info@wrt.org.nz
Waiheke Sustainability Centre, 0 Mako St
wrt.org.nz | Facebook: The Waiheke Resources Trust

REDUCE YOUR FOOD WASTE

EASY THINGS YOU CAN DO

- Plan your meals and buy only what you need
- Cook only what you will eat and let people serve themselves
- Use your freezer as a pause button; many foods can be frozen before they go bad and defrosted to use
- Store foods by using containers, jars, bag clips and honeywax to keep food fresh
- Eat your leftovers for lunch
- Compost your food scraps or feed them to chickens
- Donate your edible left over food to the community fridge at the Sustainability Centre or Community Pantry at Waiheke Budgeting Service

diverted over 37,000 tonnes of food waste from landfill. Volunteers can come from 11am to help prepare the lunch, which is served at 1pm. WRT has heaps of resources and tools on its website wrt.org.nz and check out Love Food Hate Waste NZ on Facebook for interesting links and great tips.

GET COMPOSTING

When food waste goes to landfill it produces methane, a powerful greenhouse gas, so a priority of every Waiheke household should be keeping your food scraps out of the rubbish. Setting up a composting system is a great way to do this and produce a valuable resource at the same time. The WRT runs regular composting workshops on behalf of the Composting Collective. Join us to learn about Bokashi, traditional composting and worm farming.

FREE WORKSHOPS

Book your spot at the next free composting or food waste reduction workshop by emailing info@wrt.org.nz

The Waiheke Resources Trust (WRT) runs a community food waste reduction project called Kai Conscious that hosts food waste reduction workshops and a community lunch each Friday at the Sustainability Centre where rescued food from local supermarkets and restaurants is turned into nutritious kai for all. In January 2021, the cafe had

Waiheke Resources Trust is here to help you live sustainably. We're your one stop shop for information about environmental restoration, waste minimisation, social connection and so much more. Give us a call or visit 9am - 4pm weekdays, to find out what's happening in your area, as well as give you more information about any of the topics in this pack.

Waiheke Local Board | 09 372 2915 | info@wrt.org.nz
Waiheke Sustainability Centre, 0 Mako St, Oneroa
Web: www.wrt.org.nz | Facebook: The Waiheke Resources Trust

WASTE IS A RESOURCE

Treated in the right way, most of what we are finished using could still be useful.

On Waiheke there is a strong culture of treating our waste as a resource - we compost, we share what we don't need and we recycle. It costs to transport things to and from Waiheke, including rubbish, so it makes sense for us to try and deal with as much of it here as possible.

Waiheke Resources Trust is here to help you live sustainably. We're your one stop shop for information about environmental restoration, waste minimisation, social connection and so much more. Give us a call or visit 9am - 4pm weekdays, to find out what's happening in your area, as well as give you more information about any of the topics in this pack.

Waiheke Local Board | 09 372 2915 | info@wrt.org.nz
Waiheke Sustainability Centre, 0 Mako St
wrt.org.nz | Facebook: The Waiheke Resources Trust

CARE FOR YOUR WASTEWATER SYSTEM

WHY SHOULD I TAKE CARE OF MY WASTEWATER SYSTEM?

First, it can be costly to repair or replace them. Second, it can be unhealthy for you, your family and our waterways should something go wrong with your system. Property owners also have a legal obligation to maintain their wastewater system. It is important that your wastewater system is functioning correctly so it can process your waste effectively.

TAKING CARE OF YOUR SEPTIC TANK

Know your obligations. Primary (older) systems must be inspected no less than every three years and pumped out if required when foam and sludge levels occupy 50% of the tank volume. Secondary and tertiary systems must be maintained by a suitably qualified person every six months. Records of each maintenance action must be retained and made available for inspection by Council or their agents.

Reduce water use. Reducing amounts of water entering your system is the most important action to reduce solid waste being flushed into your drainage field. Using water flow limiters on taps, checking water ratings on washing machines and dishwashers, and spacing out showers and clothes washing will help to keep solids in your system from being disturbed and flushed out. Watch out for signs of a system failure, such as murky and smelly puddles on the property or wastewater surfacing.

Use enviro-safe products. Not all products on supermarket shelves are safe for your system, even on Waiheke! Chemicals such as bleach, antibacterial and disinfectant cleaners can kill microorganisms in your system, causing it to fail. Also, most household products are designed to get through hard water that contains a high mineral content. Properties on Waiheke that harvest their water from rain have soft water. Therefore we only need to use around 1/2 the recommended amount of product to achieve the same results.

FREE WORKSHOPS AND \$40 CHECKS

The WRT hosts free wastewater workshops to help you understand how to care for your systems and offers subsidised \$40 system checks. For more info or to book your spot email info@wrt.org.nz

Waiheke Resources Trust is here to help you live sustainably. We're your one stop shop for information about environmental restoration, waste minimisation, social connection and so much more. Give us a call or visit 9am - 4pm weekdays, to find out what's happening in your area and for information about any of the topics in this pack.

Waiheke Local Board | 09 372 2915 | info@wrt.org.nz
Waiheke Sustainability Centre, 0 Mako St
wrt.org.nz | Facebook: The Waiheke Resources Trust

CARE FOR YOUR WASTEWATER SYSTEM

Somehow in the depths of your property lies a very important, and often overlooked, part of your home - your septic system.

This is the system that you use to dispose and treat your household wastewater. It is a 'living' system and is sensitive to what you put in it. Whatever you wash into a drain will end up in the septic system.

If your system is not operating effectively it can cause untreated wastewater to overflow and get into waterways. Septic systems need maintenance in order to manage wastewater and protect our environment.

Waiheke Resources Trust is here to help you live sustainably. We're your one stop shop for information about environmental restoration, waste minimisation, social connection and so much more. Give us a call or visit 9am - 4pm weekdays, to find out what's happening in your area and give you more information about any of the topics in this pack.

Waiheke Local Board | 09 372 2915 | info@wrt.org.nz
Waiheke Sustainability Centre, 0 Mako St
wrt.org.nz | Facebook: The Waiheke Resources Trust

FROM THE SKY TO YOUR TANK

Collect and conserve water with care for the sustainability of our island.

COLLECT

Maximise your rain catchment; clean all guttering regularly, check for leaks and blockages.

CONSERVE

- Keep showers short (2 minutes) and catch run-off in buckets for the garden (ensure the safety of young children around collected water).
- Reuse grey water from washing dishes to flush the toilet or water the garden.
- Turn off taps whilst brushing teeth/shaving/shampooing.
- Use the washing machine for full loads only and reduce cycle to single rinse.
- Reduce the need to wash towels by hanging in direct sunlight after use.
- Mulch your garden and water in the evening to conserve moisture.

AND IF YOU RUN LOW...

Help is at hand but don't wait until your tank is empty before ordering water; monitor your use and order when you have enough left for approximately 14 days; order with one company only and clearly state your current water level and details about tank access.

If you are on a government benefit or a low income you may be entitled to financial assistance for water from Work and Income New Zealand - call 0800 559 009.

REGISTERED WATER DELIVERY COMPANIES

Waiheke Water - 372 3192
Wai Water - 372 2021
Island Water - 372 2325
Waiheke Aqua - 372 3080

Waiheke Resources Trust is here to help you live sustainably. We're your one stop shop for information about environmental restoration, waste minimisation, social connection and so much more. Give us a call or visit 9am - 4pm weekdays, to find out what's happening in your area and give you more information about any of the topics in this pack.

Waiheke Local Board | 09 372 2915 | info@wrt.org.nz
Waiheke Sustainability Centre, 0 Mako St
wrt.org.nz | Facebook: The Waiheke Resources Trust

WAIHEKE WATER WISDOM

FOR RESIDENTS AND VISITORS

Waiheke is a non-reticulated community which means we rely on the rain to fill our tanks and our property to dispose of our waste water.

Summer can be dry - these simple tips will help you make your water last and protect the island environment that we treasure.

Waiheke Resources Trust is here to help you live sustainably. We're your one stop shop for information about environmental restoration, waste minimisation, social connection and so much more. Give us a call or visit 9am - 4pm weekdays, to find out what's happening in your area, as well as give you more information about any of the topics in this pack.

Waiheke Local Board | 09 372 2915 | info@wrt.org.nz
Waiheke Sustainability Centre, 0 Mako St
wrt.org.nz | Facebook: The Waiheke Resources Trust

WASTE IS A RESOURCE

Here are a bunch of ideas that can help you follow the waste hierarchy of reducing, reusing and recycling your waste.

Take reusable furniture, clothes and bric a brac to the op shop. The Red Cross at 112 Ocean View Rd Oneroa and WISSA at 85 Ocean Rd, Palm Beach and Community Resources Recovery Park, Ostend.

Buy and sell second hand goods at the Ostend Market every Saturday or join local Facebook groups Waiheke Trading, Waiheke Clothing and Waiheke Demolition.

Drop excess produce to the Grow stall at the Saturday market or the community fridge at the Sustainability Centre.

Check out the Waiheke Island Community Resource Recovery Centre for recycling and upcycling at 108 Ostend Rd, Ostend.

RUBBISH COLLECTION DAYS

The Auckland Council kerbside collection happens on different days depending on where you are. If your collection is on or after a public holiday, it will be one day later that week. Landfill is collected weekly on these days.

BAGS VS. BINS

On Waiheke you can choose between bags and wheeled bins in how your rubbish is collected. Call the Waiheke Service Centre on (09) 372 5099 for more information. You also have the option to take your rubbish and recycling down to our local Waiheke Community Resource Recovery Park in Ostend directly. The WCRRC has active buyers for all the recyclables they accept and has separate bins for each item ensuring a higher rate and quality of recycling can take place. Most of their buyers are recycling in Aotearoa. Remember it's always better to not make waste in the first place. Ask yourself, "do I really need this?" or "can I get it second hand?" before buying new. Be a conscious consumer and help reduce your household waste.

Waiheke Resources Trust is here to help you live sustainably. We're your one stop shop for information about environmental restoration, waste minimisation, social connection and so much more. Give us a call or visit 9am - 4pm weekdays, to find out what's happening in your area, as well as give you more information about any of the topics in this pack.

Waiheke Local Board | 09 372 2915 | info@wrt.org.nz
Waiheke Sustainability Centre, 0 Mako St
wrt.org.nz | Facebook: The Waiheke Resources Trust

Septic Tank Check Subsidy

**\$50
OFF**

Subsidised septic tank checks
are available to residents
island-wide.



**Book your check
today!**

call 372 2915

email

info@wrt.org.nz

**Current challenge:
Getting homeowners
to trust the subsidy
scheme and take part
in this opportunity**

Acknowledgements

Thank you to our funders, sponsors and partners, interns and volunteers who made our work possible:

Funders and sponsors

