



Te Ture ā-Rohe Whakararata Waipiro 2014 Alcohol Control Bylaw 2014

(as at 29 April 2021)

made by the Governing Body of Auckland Council

in resolution GB/2014/121

on 30 October 2014

Bylaw made under [sections 145](#) and [147](#) of the Local Government Act 2002.

Summary

This summary is not part of the Bylaw but explains the general effects.

Sometimes drinking in public places can cause or worsen crime or disorder there. For example, drinkers may make too much noise, leave litter or graffiti, urinate in public, commit vandalism or theft, intimidate or assault others, trespass, or use vehicles recklessly.

This can negatively affect nearby residents' sleep, reduce the recreational or visual amenity of the place, make people feel unsafe, and place drinkers or those around them in danger of physical harm.

The purpose of this Bylaw is to reduce crime or disorder in certain public places that is caused or made worse by alcohol consumed there, by –

- using alcohol bans to prohibit people from consuming, bringing or possessing alcohol in certain public places at certain times (clause 6)
- setting out how council may make a new alcohol ban by resolution (clauses 7 and 8)
- specifying event-based temporary alcohol bans (Schedule 1)
- referencing the full list of alcohol bans and maps (viewable on council's [website](#)).

Other parts of this Bylaw assist with its administration by –

- stating its name, when it comes into force and where it applies (clauses 1, 2 and 3)
- stating the purpose of this Bylaw and defining key terms (clauses 4 and 5)
- referencing the powers of the New Zealand Police to enforce this Bylaw, including the issue of \$250 infringement fines (Part 4)
- ensuring existing resolutions continue to apply and incomplete enforcement action can continue where relevant (Part 5).

Contents

Clause	Description	Page
1	Title	4
2	Commencement	4
3	Application	4
Part 1		
Preliminary provisions		
4	Purpose	4
5	Interpretation	4
Part 2		
Alcohol consumption and possession in public places		
6	Alcohol prohibited in public places where an alcohol ban applies	6
Part 3		
Controls		
7	Council may make an alcohol ban	7
8	Procedure for making an alcohol ban	7
Part 4		
Enforcement powers, offences and penalties		
9	Police can use statutory powers and other methods to enforce this Bylaw	8
10	A person can be penalised for not complying with this Bylaw	8
Part 5		
Savings and transitional provisions		
11	Existing resolutions continue to apply	9
12	Existing inquiries to be completed under this Bylaw 9Error! Bookmark not defined.	
Schedules		
Schedule 1	Event-Based Temporary Alcohol Bans	10

1 Title

- (1) This Bylaw is Te Ture ā-Rohe Whakarangata Waipiro 2014 / the Alcohol Control Bylaw 2014.

Clause 1 amended in accordance with Clause 2(2).

2 Commencement

- (1) This Bylaw comes into force on 18 December 2014.
- (2) Amendments to this Bylaw by resolution GB/2021/32 come into force on 01 June 2021.

Related information about amendments

Council decided on 29 April 2021 to make various amendments to the Bylaw. The majority of the amendments were to make the Bylaw easier to read and understand. Key changes included:

- making new event-based temporary alcohol bans in Schedule 1
- using related information notes to replace clauses about alcohol ban signage and to replace clauses that duplicate legislative decision-making criteria
- clarifying exceptions to alcohol bans for licensed premises and the transport of alcohol, and clarifying council's ability to make temporary alcohol bans.

A comparison of the Bylaw before and after the amendments were made can be viewed in Item B of the Auckland Council Governing Body meeting agenda dated 29 April 2021.

Clause 2 amended in accordance with Clause 2(2).

3 Application

- (1) This Bylaw applies to Auckland.

Part 1

Preliminary provisions

4 Purpose

- (1) The purpose of this Bylaw is to reduce crime or disorder in certain public places that is caused or made worse by alcohol consumed there.

Clause 4 amended in accordance with Clause 2(2).

5 Interpretation

- (1) In this Bylaw, unless the context otherwise requires, –

Alcohol has the meaning given by [section 5\(1\)](#) of the Sale and Supply of Alcohol Act 2012.

Auckland has the meaning given by [section 4\(1\)](#) of the Local Government (Auckland Council) Act 2009.

Related information

The Local Government (Auckland Council) Act 2009 enabled the Local Government Commission to determine Auckland's boundaries in a map titled [LGC-Ak-R1](#). The boundaries were formally adopted by [Order in Council](#) on 15 March 2010, and came into effect on 1 November 2010.



Christmas / New Year holiday period means Christmas Eve (the day before Christmas Day) to the day after New Year's Day as determined by the [Holidays Act 2003](#).

Council means the Governing Body of the Auckland Council or any person delegated or authorised to act on its behalf.

Related information about who can make an alcohol ban

Council has delegated the making of alcohol bans by resolution under clause 7 to –

- local boards for local parks, streets and carpark as at 30 October 2014 (GB/2014/121)
- the Regulatory Committee for areas of regional significance as at 30 October 2014 (GB2/2014/121)
- the Auckland Domain Committee for the Auckland Domain as at 1 November 2016 (GB/2016/237).

The Governing Body of Auckland Council is responsible for making alcohol bans in all other public places, and for any alcohol bans in Schedule 1.

Public holiday has the same meaning given in the [Holidays Act 2003](#).

Public place has the meaning given by [section 147](#) of the Local Government Act 2002.

Related information

The Local Government Act 2002 (as reprinted on 1 July 2018) states a public place –

- (a) means a place that is open to or is being used by the public, whether free or on payment of a charge, and whether any owner or occupier of the place is lawfully entitled to exclude or eject any person from it; but
- (b) does not include licensed premises.

Vehicle has the meaning given by [section 2\(1\)](#) of the Land Transport Act 1998.

- (2) Related information and links do not form part of this Bylaw and may be inserted, changed or removed without any formality.
- (3) The [Interpretation Act 1999](#) applies to this Bylaw.

Clause 5 amended in accordance with Clause 2(2).

Part 2

Alcohol consumption and possession in public places

6 Alcohol prohibited in public places where an alcohol ban applies

- (1) A person must not consume, bring or possess alcohol in any public place or in any vehicle in any public place where –
 - (a) an alcohol ban made by council in accordance with clause 7 of this Bylaw applies; or
 - (b) an alcohol ban in a Schedule of this Bylaw applies.
- (2) However, subclause (1) does not apply in those circumstances described in section [147\(4\)](#) or section [147\(1\)\(b\)](#) of the Local Government Act 2002.

Related information about alcohol bans

A list of all alcohol bans made using clause 7 and related maps is attached at the end of this Bylaw for information only, and can be viewed on council's [website](#).

Related information about exceptions – Transport of alcohol

In [section 147\(4\)](#) of the Local Government Act 2002 (as reprinted on 26 March 2020), an alcohol ban does not apply in the case of alcohol in an unopened container to,—

- “(a) the transport of the alcohol from licensed premises next to a public place, if—
- (i) it was lawfully bought on those premises for consumption off those premises; and
 - (ii) it is promptly removed from the public place; or
- (b) the transport of the alcohol from outside a public place for delivery to licensed premises next to the public place; or
- (c) the transport of the alcohol from outside a public place to premises next to a public place by, or for delivery to, a resident of the premises or his or her bona fide visitors; or
- (d) the transport of the alcohol from premises next to a public place to a place outside the public place if—
- (i) the transport is undertaken by a resident of those premises; and
 - (ii) the alcohol is promptly removed from the public place.”

This may include for example, transporting alcohol from a supermarket to your home, from your home to a BYO restaurant or from your home to a friend's house.

Related information about exceptions – Licensed premises

In section [147\(1\)\(b\)](#) of the Local Government Act 2002 (as reprinted on 26 March 2020), exceptions apply to an alcohol ban where a licence is held under the Sale and Supply of Alcohol Act 2012 ([Subpart 1 of Part 2](#)). This may include for example, buying alcohol at an event at a park that holds a special licence or dining on the footpath at a restaurant that holds an on-licence providing for BYO alcohol.

Clause 6 amended in accordance with Clause 2(2).

Part 3 Controls

7 Council may make an alcohol ban

- (1) Council may make an alcohol ban for the purpose of prohibiting or otherwise regulating or controlling, either generally or for one or more specified periods, any or all of the following:
 - (a) the consumption, bringing or possession of alcohol in public places; and
 - (b) in conjunction with (a), the presence or consumption of alcohol in vehicles, or vehicles of stated kinds or descriptions, in public places.
- (2) Council may amend, replace or revoke an alcohol ban in accordance with clause 8 with all necessary modifications.

Clause 7 amended in accordance with Clause 2(2).

8 Procedure for making an alcohol ban

- (1) Council must, before making an alcohol ban in clause 7 –
 - (a) comply with decision-making requirements under the Local Government Act 2002; and
 - (b) consider using one of the following standard times where appropriate in relation to the requirements in subclause 1(a) –
 - (i) 24 hours, 7 days a week (at all times alcohol ban);
 - (ii) 7pm to 7am daily (evening alcohol ban);
 - (iii) 10pm to 7am daylight saving and 7pm to 7am outside daylight saving (night-time alcohol ban);
 - (iv) 7pm on the day before to 7am on the day after any weekend, public holiday or Christmas / New Year holiday period (weekend and holiday alcohol ban).

Related information about making an alcohol ban

- An alcohol ban may be permanent or temporary:
 - a permanent alcohol ban applies to a place for long periods (for example a town centre or park 24 hours 7 days a week or 7pm to 7am daily)
 - a temporary alcohol ban applies to large scale events (for example a major concert, festival or sporting event).
- Council may make a permanent or temporary alcohol ban under clause 7 at a meeting of a local board, the Auckland Domain Committee or the Regulatory Committee or directly in a bylaw. The process to amend, replace or revoke an alcohol ban is similar to the process that made the ban. The Local Government Act 2002 (as reprinted on 26 March 2020) prescribes the criteria to make an alcohol ban in sections [147B](#) (for resolutions) and [147A](#) (for bylaws). The criteria cannot be changed by council.
- For alcohol bans made by resolution or in a bylaw, the statutory criteria requires:
 - evidence of a high level of crime or disorder in the area caused by or made worse by alcohol consumption in that same area
 - the ban to be appropriate and proportionate in light of the crime or disorder

- the ban to be justified as a reasonable limitation on people's rights and freedoms.
- For temporary alcohol bans in Schedule 1, the statutory criteria requires the alcohol ban to be justified as a reasonable limitation on people's rights and freedoms.
- Before making a decision, council must also comply with the general decision-making requirements under [Subpart 1 of Part 6](#) of the Local Government Act 2002 (as reprinted on 26 March 2020). This could include considering –
 - complementary or alternative solutions to an alcohol ban, for example locking gates, public bins, lighting, CCTV and Māori or Pacific Wardens
 - views of people likely to be affected by or interested in the alcohol ban, for example nearby residents or businesses, community groups, and the New Zealand Police
 - the nature, severity and frequency of alcohol-related crime or disorder
 - whether the crime or disorder is a result of displacement from an existing alcohol ban
 - whether an alcohol ban would result in displacement of the crime or disorder
 - whether a [Crime Prevention through Environmental Design](#) assessment is needed.
- Council must under clause 8 consider standard times to improve consistency in Auckland, however it may also consider other times more appropriate and proportionate in light of evidence.

Related information about making an alcohol ban – making a request

- Members of the public (for example community groups, businesses and the New Zealand Police) may request council to make an alcohol ban at any time, with supporting evidence.

Related information about alcohol ban signage

- Council uses alcohol ban signage to inform, educate and assist with enforcement.
- The Governor General may use [section 147C](#) of the Local Government Act 2002 (as reprinted on 26 March 2020) to make rules about alcohol ban signage. No rules have been made to date.

Clause 8 replaced in accordance with Clause 2(2).

Part 4

Enforcement powers, offences and penalties

9 Police can use statutory powers and other methods to enforce this Bylaw

- (1) A Police constable may use their powers under the [Local Government Act 2002](#) to enforce this Bylaw.

Related information about enforcement

The New Zealand Police are responsible for enforcing alcohol bans and have powers relating to search, seizure and arrest under sections [169](#) and [170](#) of the Local Government Act 2002 (as reprinted on 26 March 2020).

Clause 9 amended in accordance with Clause 2(2).

10 A person can be penalised for not complying with this Bylaw

- (1) A person who fails to comply with Part 2 of this Bylaw commits an offence and is liable to a penalty under the [Local Government Act 2002](#).

Related information about penalties

A person who breaches an alcohol ban commits an offence and is liable to an infringement fee of \$250 under [section 4](#) of the Local Government (Alcohol Ban Breaches) Regulations 2013 (as printed on 18 December 2013).

Clause 10 amended in accordance with Clause 2(2).

Part 5

Savings and transitional provisions

11 Existing resolutions continue to apply

- (1) This clause applies to all resolutions made under this Bylaw prior to amendments in clause 2(2) coming into force.
- (2) Every resolution made continues to apply as if made after the amendments to this Bylaw until the expiration date specified in the resolution or until amended, replaced or revoked by council, whichever comes first.

Clause 11 inserted in accordance with Clause 2(2).

12 Existing inquiries to be completed under this Bylaw

- (1) Any compliance or enforcement action by council under this Bylaw that was not completed prior to amendments in clause 2(2) coming into force will continue to be actioned under this Bylaw as if the amendments had not been made.

Clause 12 inserted in accordance with Clause 2(2).

Schedule 1
Event-Based Temporary Alcohol Bans

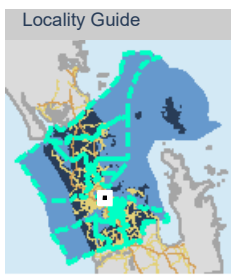
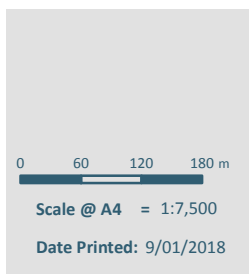
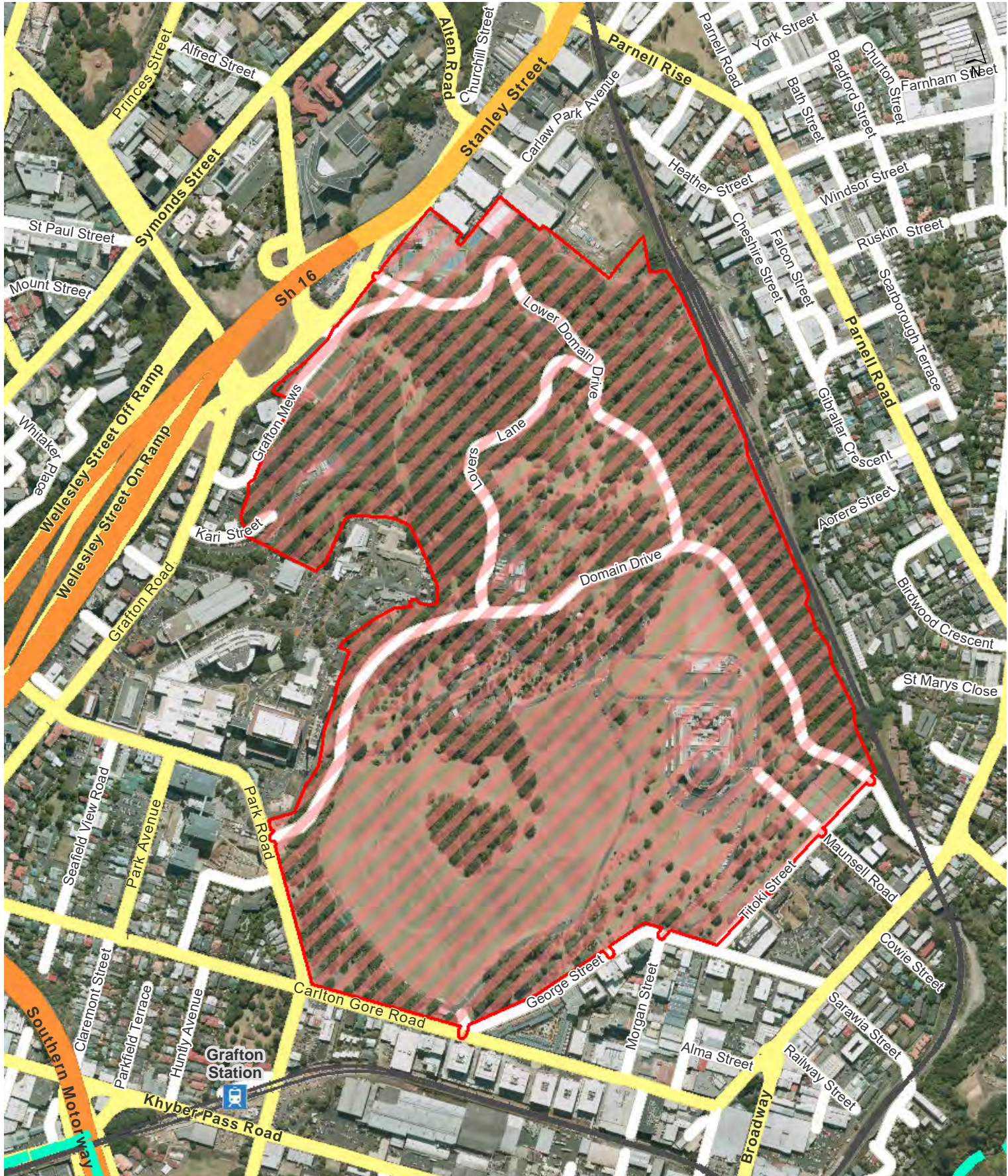
Name	Alcohol Ban Area	Operative Time	Map number
<ul style="list-style-type: none"> Pukekawa / Auckland Domain major events alcohol ban (excluding 'Christmas in the Park') 	<ul style="list-style-type: none"> Auckland Domain Associated carpark areas and sports fields Any fan trail activated as part of the event 	6am on the day of any major event at Auckland Domain to 6am on the day after that event	1
<ul style="list-style-type: none"> Pukekawa / Auckland Domain 'Christmas in the Park' alcohol ban 	<ul style="list-style-type: none"> Auckland Domain Associated carpark areas, sports fields and surrounding streets Any fan trail activated as part of the event 	4pm on the Friday before any 'Christmas in the Park' event at the Auckland Domain to 8am on the following Monday after that event	2
<ul style="list-style-type: none"> Eden Park major events alcohol ban 	<ul style="list-style-type: none"> Eden Park Surrounding streets Any fan trail activated as part of the event 	12 hours before any major event at Eden Park to 12 hours after that event	3
	<ul style="list-style-type: none"> Fan Trail 1: Ponsonby Road to Eden Park or Fan Trail 2: Queen Street to Eden Park, if activated as part of the event 		3A 3B
<ul style="list-style-type: none"> Rarotonga / Mt Smart Stadium major events alcohol ban 	<ul style="list-style-type: none"> Mt Smart Stadium Surrounding streets Any fan trail activated as part of the event 	6am on the day of any major event at Mt Smart Stadium to 6am on the day after that event	4
<ul style="list-style-type: none"> Waiōrea / Western Springs Stadium and Outer Fields major events alcohol ban 	<ul style="list-style-type: none"> Western Springs Stadium Western Springs Lakeside Western Springs Outer Fields Surrounding streets and zoo carpark Any fan trail activated as part of the event 	6am on the day of any major event at Western Springs Stadium and/or Outer Fields to 6am on the day after that event	5

In this Schedule:

- "Major events" has the same meaning as "large scale events" in section [147A](#) of the Local Government Act 2002.
- The alcohol bans in the table above apply if a major event is held on all or part of a venue stated.

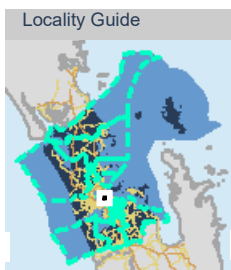
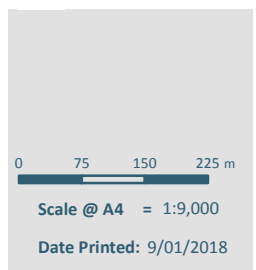
Related information about event-based (temporary) alcohol bans

- More information on major events can be found in council's [Events Policy](#). The policy describes major events as events that have a regional, national and international profile. Examples of major events where a temporary alcohol ban could apply include concerts (Six60 at Western Springs), festivals (Lantern Festival at Auckland Domain), and sporting events (Warriors at Mount Smart).
- A fan trail is an official route for event attendees to walk to an event venue and may include train stations, for example Newmarket Train Station or Mount Eden Train Station.
- There are two established Eden Park Fan Trails: a 2.3 kilometre walking route to Eden Park from Western Park on Ponsonby Road (activated on 'match days') and a 4 kilometre walking route to Eden Park from Queen Street (last activated during the 2011 Rugby World Cup).
- At this time, there are no other established 'fan trails' associated with any other venue in Schedule 1 of the Bylaw.



Pukekawa / Auckland Domain - Major events (excluding Christmas in the Park)
 Regional
 Hours of Operation: 6am on the first day of the event until 6am on the day after the event
 Alcohol ban does not apply to areas covered by a Sale and Supply of Alcohol Act 2012 licence.





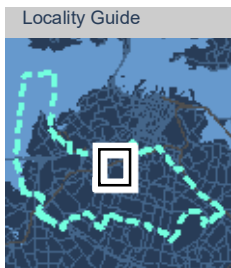
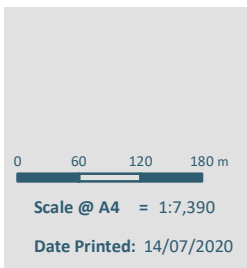
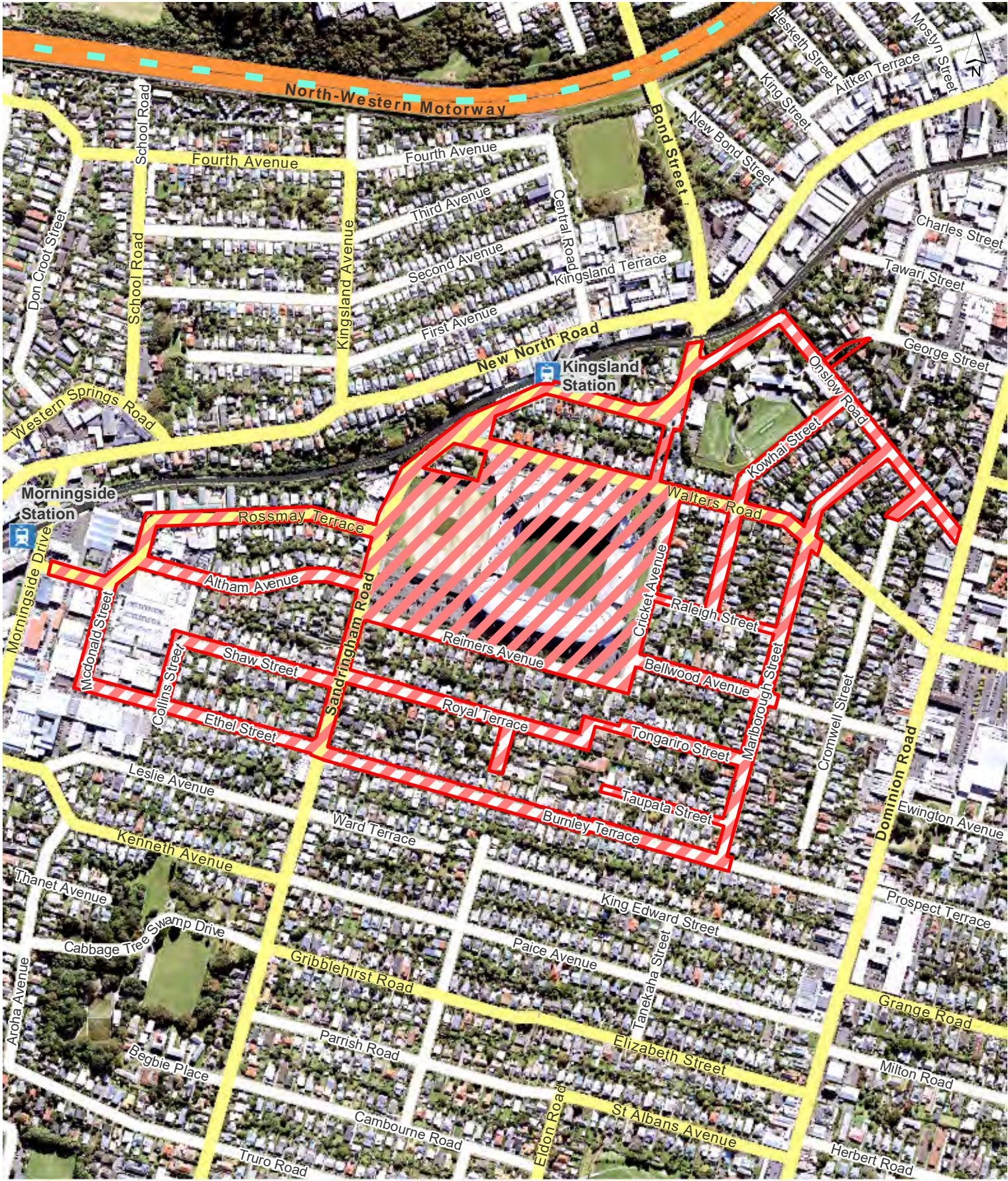
Pukekawa / Auckland Domain - Christmas in the Park

Regional

Hours of Operation: From 4pm on the Friday before the event to 8am on the following Monday after the event

Alcohol ban does not apply to areas covered by a Sale and Supply of Alcohol Act 2012 licence.



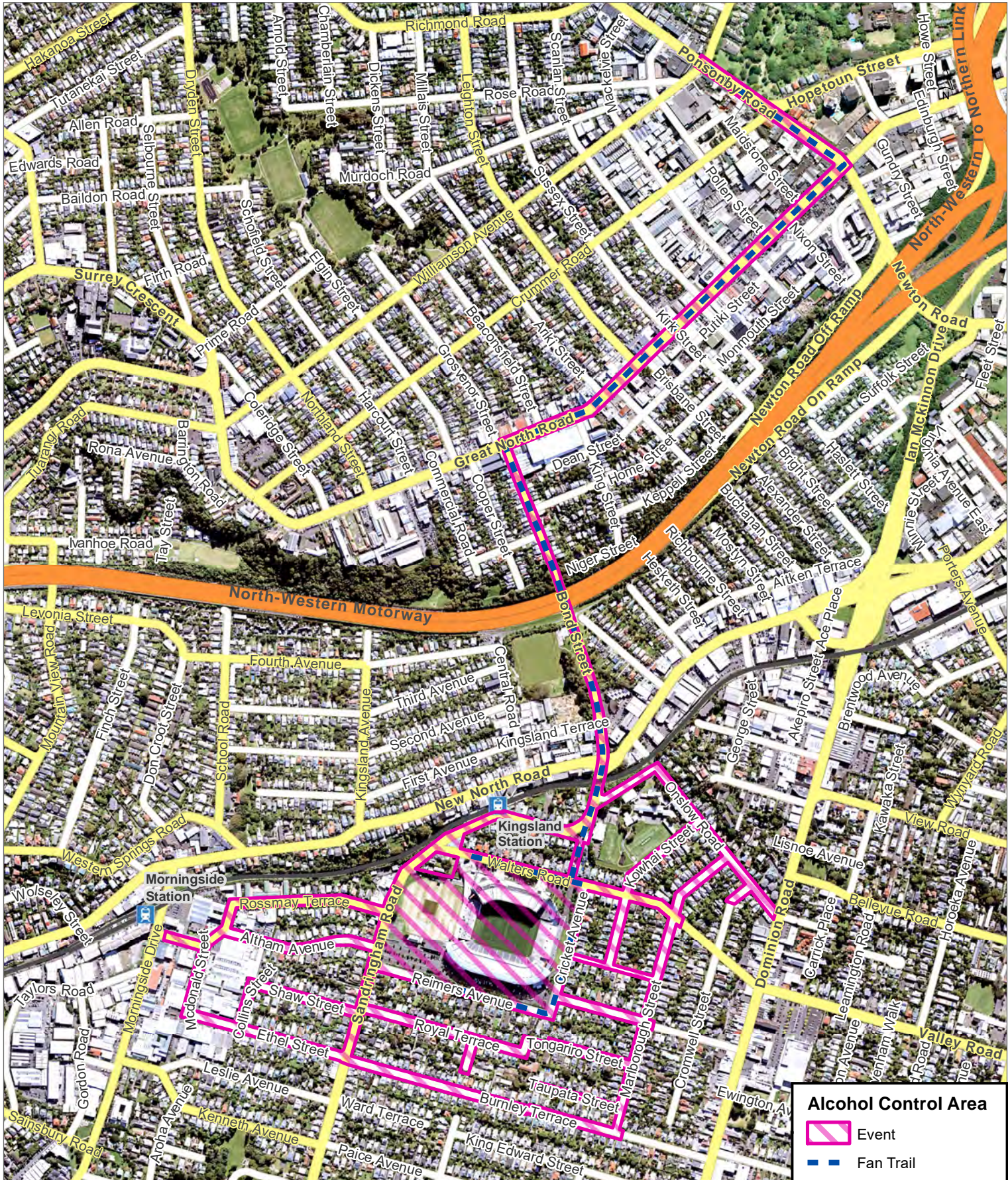


Eden Park - Major events


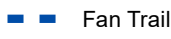
Regional
 Hours of Operation: 12 hours before and after an event

Alcohol ban does not apply to areas covered by a Sale and Supply of Alcohol Act 2012 licence.





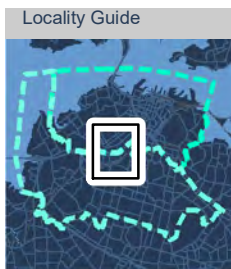
Alcohol Control Area

-  Event
-  Fan Trail

0 90 180 270 m

Scale @ A4 = 1:11,000

Date Printed: 30/07/2020

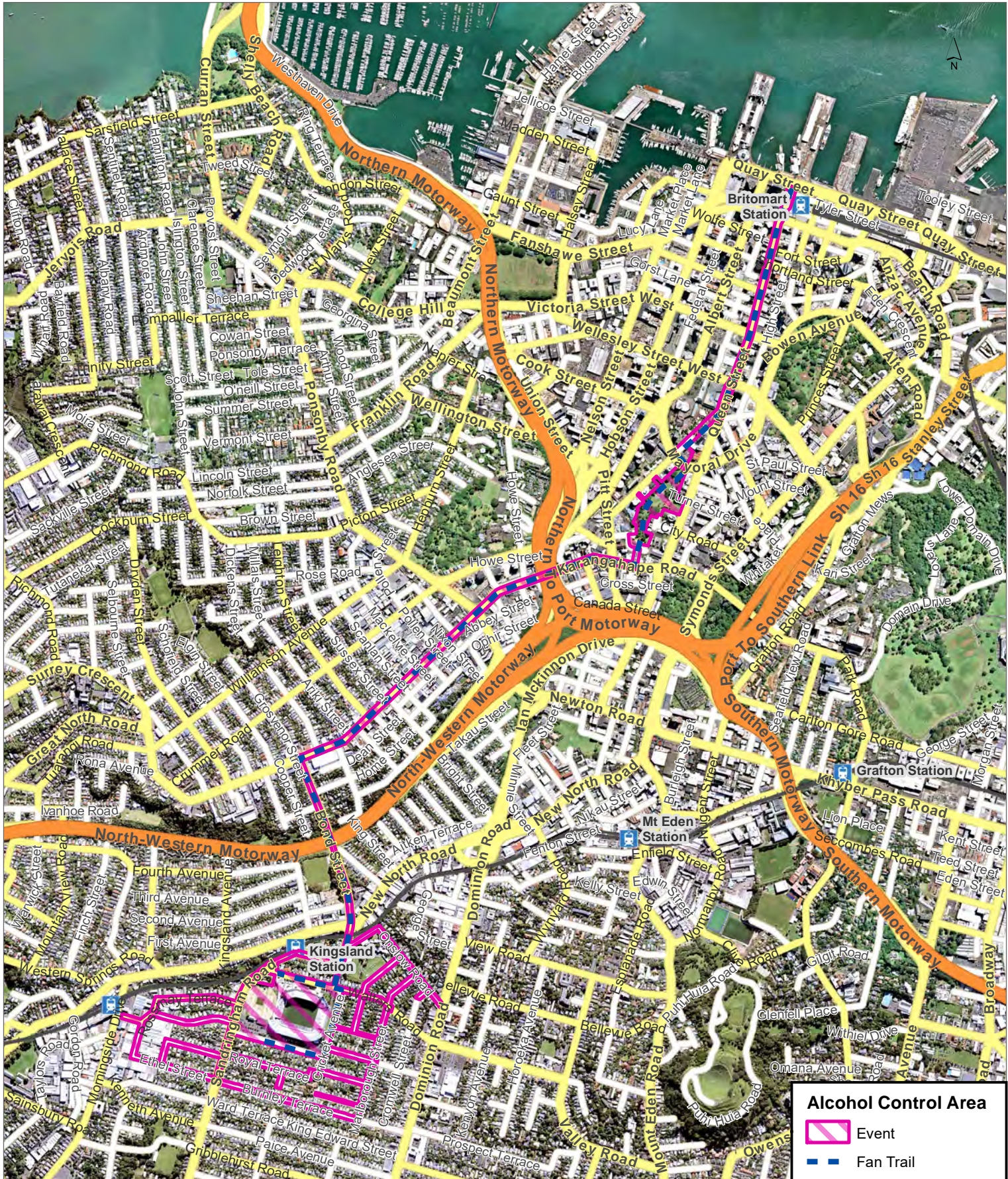


Fan Trail 1: Ponsonby Road to Eden Park

Applies if activated as part of a major event at Eden Park.

Alcohol ban does not apply to areas covered by a Sale and Supply of Alcohol Act 2012 licence





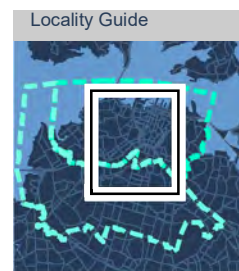
Alcohol Control Area

- Event
- Fan Trail

0 180 360 540 m

Scale @ A4 = 1:21,000

Date Printed: 30/07/2020

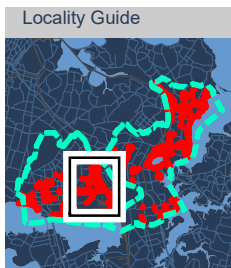
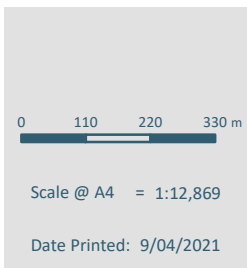
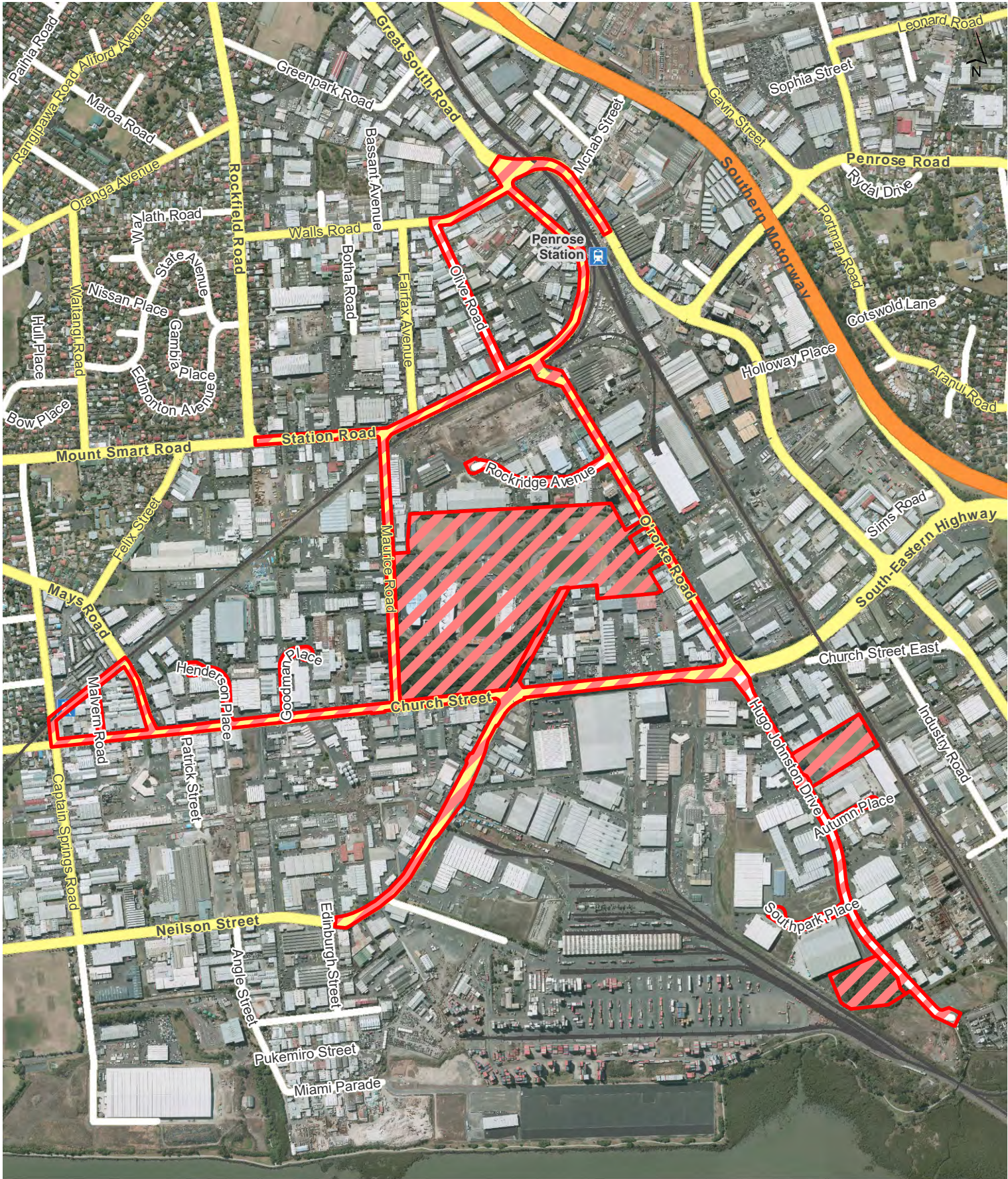


Fan Trail 2: Queen Street to Eden Park

Applies if activated as part of a major event at Eden Park.

Alcohol ban does not apply to areas covered by a Sale and Supply of Alcohol Act 2012 licence





Rarotonga / Mt Smart Stadium - Major events

Regional

Hours of Operation: 6am on the day of the event to 6am the day after the event

Alcohol ban does not apply to areas covered by a Sale and Supply of Alcohol Act 2012 licence.



Auckland Council

Te Kaunihera o Tamaki Makaurau



Locality Guide



Waiārea / Western Springs Stadium and Outer Fields - Major events

Regional

Hours of Operation: 6am on the day of the event to 6am on the day after the event.

Alcohol ban does not apply to areas covered by a Sale and Supply of Alcohol Act 2012 licence.



0 110 220 330 m

Scale @ A4 = 1:12,640

Date Printed: 12/04/2021

Related information, Bylaw history

Date	Description
01 November 2010	Made legacy bylaws about alcohol control ¹ (Section 63 Local Government (Auckland Transitional Provisions) Act 2010)
01 November 2010	Commencement of legacy bylaws about alcohol control (Section 63 Local Government (Auckland Transitional Provisions) Act 2010)
22 July 2014	Review of legacy bylaws about alcohol control completed (RBC/2014/27)
31 July 2014	Proposal to make new bylaw about alcohol control and to revoke legacy bylaws (GB/2014/70)
30 October 2014	Made the Auckland Council Alcohol Control Bylaw 2014 (GB/2014/121)
19 November 2014	Public notice of making of the Auckland Council Alcohol Control Bylaw 2014 and revocation of legacy bylaws
18 December 2014	Commencement of Auckland Council Alcohol Control Bylaw 2014 and revocation of legacy bylaws (GB/2014/121)
11 April 2019	Review of Auckland Council Alcohol Control Bylaw 2014 completed (REG/2019/19)
24 September 2020	Proposal to make a new bylaw about alcohol control (GB/2020/109)
29 April 2021	Amended the Auckland Council Alcohol Control Bylaw 2014 (GB/2021/32)
01 June 2021	Commencement of amendments to the Auckland Council Alcohol Control Bylaw 2014 (GB/2021/32)
July 2021	Public notice of amending the Auckland Council Alcohol Control Bylaw 2014.

¹ Legacy bylaws made: Auckland City Council No. 14 Liquor Control in Public Places Bylaw 2004, Franklin District Council Liquor Control Bylaw 2008, Chapter 11 (Liquor Control) of the Manukau City Consolidated Bylaw 2008, Part 24 (Control of consumption of liquor) of the North Shore City Council Bylaw 2000, Papakura District Council Liquor Control in Public Places Bylaw 2008, Chapter 16 (Liquor) of the Rodney District Council General Bylaw 1998 and Waitakere City Council Control of Liquor in Public Places Bylaw 2008.

Related information, existing temporary event alcohol bans made by resolution

Temporary event alcohol bans made by resolution exist for Eden Park (AE/2015/119), Rarotonga / Mount Smart Stadium (MT/2017/144), Christmas in the Park at Pukekawa / Auckland Domain (RBC/2015/41, WTM/2016/110) and Lantern Festival at Pukekawa / Auckland Domain (ADC/2017/43, expires after 2022 festival). The bans for the same venues in Schedule 1 however take precedence. This is because the bans in Schedule 1 apply to slightly greater areas and times.

Related information, next bylaw review

This Bylaw must be reviewed by 11 April 2029. If not reviewed by this date, the Bylaw will expire on 11 April 2031.

Find out more: **phone 09 301 0101**
or visit **aucklandCouncil.govt.nz**



Local board	Map number	Alcohol ban area	Operative time	Decision date	Decision reference	Commencement date
Albert-Eden	1	Anderson Park	24 hours, 7 days a week	20/10/2015	AE/2015/118	31/10/2015
Albert-Eden	2	Bellevue Reserve	24 hours, 7 days a week	20/10/2015	AE/2015/118	31/10/2015
Albert-Eden	3	Braemar Reserve	24 hours, 7 days a week	20/10/2015	AE/2015/118	31/10/2015
Albert-Eden	3a	Delphine Park	24 hours, 7 days a week	7/12/2016	AE/2016/2225	7/12/2016
Albert-Eden	4	Eden Valley Town Centre	24 hours, 7 days a week	20/10/2015	AE/2015/118	31/10/2015
Albert-Eden	5	Edendale Reserve	24 hours, 7 days a week	20/10/2015	AE/2015/118	31/10/2015
Albert-Eden	6	Eric Armishaw Park	24 hours, 7 days a week	20/10/2015	AE/2015/118	31/10/2015
Albert-Eden	7	Howlett Reserve	24 hours, 7 days a week	20/10/2015	AE/2015/118	31/10/2015
Albert-Eden	8	Kingsland Town Centre	24 hours, 7 days a week	20/10/2015	AE/2015/118	31/10/2015
Albert-Eden	8a	Monkey Hill Reserve	24 hours, 7 days a week	7/12/2016	AE/2016/222	7/12/2016
Albert-Eden	9	Mount Albert Town Centre	24 hours, 7 days a week	20/10/2015	AE/2015/118	31/10/2015
Albert-Eden	10	Mt Eden Town Centre	24 hours, 7 days a week	20/10/2015	AE/2015/118	31/10/2015
Albert-Eden	11	Oakley Creek Walkway	24 hours, 7 days a week	20/10/2015	AE/2015/118	31/10/2015
Albert-Eden	12	Pt Chevalier Town Centre	24 hours, 7 days a week	20/10/2015	AE/2015/118	31/10/2015
Albert-Eden	13	Raymond Reserve	24 hours, 7 days a week	20/10/2015	AE/2015/118	31/10/2015
Albert-Eden	13a	Roy Clements Treeway	24 hours, 7 days a week	7/12/2016	AE/2016/222	7/12/2016
Albert-Eden	14	Waterview Reserve	24 hours, 7 days a week	20/10/2015	AE/2015/118	31/10/2015
Albert-Eden	15	Alan Wood Reserve	7pm to 7am daily	17/02/2016	AE/2015/118 & WH/2016/5	31/10/2015
Albert-Eden	16	Claude Reserve	7pm to 7am daily	20/10/2015	AE/2015/118	31/10/2015
Albert-Eden	17	Fowlds Park	7pm to 7am daily	20/10/2015	AE/2015/118	31/10/2015
Albert-Eden	18	Gribblehirst Park	7pm to 7am daily	20/10/2015	AE/2015/118	31/10/2015
Albert-Eden	19	Harbutt Reserve	7pm to 7am daily	20/10/2015	AE/2015/118	31/10/2015
Albert-Eden	20	Heron Park	7pm to 7am daily	17/02/2016	AE/2015/118 & WH/2016/5	31/10/2015
Albert-Eden	21	Kerr-Taylor Park	7pm to 7am daily	20/10/2015	AE/2015/118	31/10/2015
Albert-Eden	22	Kuaka Park	7pm to 7am daily	20/10/2015	AE/2015/118	31/10/2015
Albert-Eden	23	Mt Albert War Memorial Reserve	7pm to 7am daily	20/10/2015	AE/2015/118	31/10/2015
Albert-Eden	24	Murray Halberg Park	7pm to 7am daily	20/10/2015	AE/2015/118	31/10/2015
Albert-Eden	25	Owairaka Park	7pm to 7am daily	20/10/2015	AE/2015/118	31/10/2015
Albert-Eden	26	Phyllis Reserve	7pm to 7am daily	20/10/2015	AE/2015/118	31/10/2015
Albert-Eden	27	School Reserve	7pm to 7am daily	20/10/2015	AE/2015/118	31/10/2015
Albert-Eden	28	Tutuki Reserve	7pm to 7am daily	20/10/2015	AE/2015/118	31/10/2015
Albert-Eden	29	Windmill Park	7pm to 7am daily	20/10/2015	AE/2015/118	31/10/2015

Local board	Map number	Alcohol ban area	Operative time	Decision date	Decision reference	Commencement date
Albert-Eden	30	Alverston St Esplanade Reserve	10pm to 7am daylight saving and 7pm to 7am outside daylight saving	20/10/2015	AE/2015/118	31/10/2015
Albert-Eden	31	Melville Park	10pm to 7am daylight saving and 7pm to 7am outside daylight saving	20/10/2015	AE/2015/118	31/10/2015
Albert-Eden	32	Moa Reserve	10pm to 7am daylight saving and 7pm to 7am outside daylight saving	20/10/2015	AE/2015/118	31/10/2015
Albert-Eden	33	Moa Reserve De Luen Road	10pm to 7am daylight saving and 7pm to 7am outside daylight saving	20/10/2015	AE/2015/118	31/10/2015
Albert-Eden	34	Nicholson Park	10pm to 7am daylight saving and 7pm to 7am outside daylight saving	20/10/2015	AE/2015/118	31/10/2015
Albert-Eden	35	Pasadena Reserve	10pm to 7am daylight saving and 7pm to 7am outside daylight saving	20/10/2015	AE/2015/118	31/10/2015
Albert-Eden	36	Sandringham Reserve	10pm to 7am daylight saving and 7pm to 7am outside daylight saving	20/10/2015	AE/2015/118	31/10/2015
Albert-Eden	37	Taylors Park	10pm to 7am daylight saving and 7pm to 7am outside daylight saving	20/10/2015	AE/2015/118	31/10/2015
Albert-Eden	38	Walmer Reserve North	10pm to 7am daylight saving and 7pm to 7am outside daylight saving	20/10/2015	AE/2015/118	31/10/2015
Albert-Eden	39	Walmer Reserve South	10pm to 7am daylight saving and 7pm to 7am outside daylight saving	20/10/2015	AE/2015/118	31/10/2015
Albert-Eden	40	Western Springs Gardens	10pm to 7am daylight saving and 7pm to 7am outside daylight saving	20/10/2015	AE/2015/118	31/10/2015
Albert-Eden	41	Coyle Park	9pm to 7am daylight saving and 7pm to 7am outside daylight saving	20/10/2015	AE/2015/118	31/10/2015
Albert-Eden	42	Harbour View Esplanade Reserve	9pm to 7am daylight saving and 7pm to 7am outside daylight saving	20/10/2015	AE/2015/118	31/10/2015
Albert-Eden	43	Harbour View Reserve	9pm to 7am daylight saving and 7pm to 7am outside daylight saving	20/10/2015	AE/2015/118	31/10/2015
Albert-Eden	44	Streets surrounding Eden Park (Major Events)	12 hours before & after a major event	20/10/2015	AE/2015/118	31/10/2015
Albert-Eden (made by Regulatory and Bylaws Committee)	4	Maungawhau (Mt Eden)	10pm to 7am daylight saving and 7pm to 7am outside daylight saving	13/10/2015	RBC/2015/41	31/10/2015
Devonport-Takapuna	1	Akoranga Bus Station	24 hours, 7 days a week	20/10/2015	DT/2015/206	31/10/2015
Devonport-Takapuna	2	Ngatarangi Park, Devonport	24 hours, 7 days a week	20/10/2015	DT/2015/206	31/10/2015

Local board	Map number	Alcohol ban area	Operative time	Decision date	Decision reference	Commencement date
Devonport-Takapuna	3	Smales Farm Bus Station	24 hours, 7 days a week	20/10/2015	DT/2015/206	31/10/2015
Devonport-Takapuna	4	Sunnynook Bus Station	24 hours, 7 days a week	20/10/2015	DT/2015/206	31/10/2015
Devonport-Takapuna	5	Takapuna Town Centre (including The Promenade extension)	24 hours, 7 days a week	20/10/2015 & 16/08/2016	DT/2015/206 & DT/2016/146	31/10/2015
Devonport-Takapuna	6	Castor Bay Beach Reserve	9pm to 7am daylight saving and 7pm to 7am outside daylight saving	20/10/2015	DT/2015/206	31/10/2015
Devonport-Takapuna	7	Killarney Park, Takapuna	9pm to 7am daylight saving and 7pm to 7am outside daylight saving	20/10/2015	DT/2015/206	31/10/2015
Devonport-Takapuna	8	Takapuna Beach	9pm to 7am daylight saving and 7pm to 7am outside daylight saving	20/10/2015	DT/2015/206	31/10/2015
Devonport-Takapuna	9	Bayswater Reserve	10pm to 7am daylight saving and 7pm to 7am outside daylight saving	20/10/2015	DT/2015/206	31/10/2015
Devonport-Takapuna	10	Belmont shops	10pm to 7am daylight saving and 7pm to 7am outside daylight saving	20/10/2015	DT/2015/206	31/10/2015
Devonport-Takapuna	11	Cheltenham Beach	10pm to 7am daylight saving and 7pm to 7am outside daylight saving	20/10/2015	DT/2015/206	31/10/2015
Devonport-Takapuna	12	Devonport Town Centre	10pm to 7am daylight saving and 7pm to 7am outside daylight saving	20/10/2015	DT/2015/206	31/10/2015
Devonport-Takapuna	13	George Gair Reserve	10pm to 7am daylight saving and 7pm to 7am outside daylight saving	20/10/2015	DT/2015/206	31/10/2015
Devonport-Takapuna	14	Kennedy Park, Castor Bay	10pm to 7am daylight saving and 7pm to 7am outside daylight saving	20/10/2015	DT/2015/206	31/10/2015
Devonport-Takapuna	15	Kitchener Park, Milford	10pm to 7am daylight saving and 7pm to 7am outside daylight saving	20/10/2015	DT/2015/206	31/10/2015
Devonport-Takapuna	16	Milford Beach (reserve and carpark)	10pm to 7am daylight saving and 7pm to 7am outside daylight saving	20/10/2015	DT/2015/206	31/10/2015
Devonport-Takapuna	17	Narrowneck Beach	10pm to 7am daylight saving and 7pm to 7am outside daylight saving	20/10/2015	DT/2015/206	31/10/2015
Devonport-Takapuna	18	Pupuke Reef, Takapuna	10pm to 7am daylight saving and 7pm to 7am outside daylight saving	20/10/2015	DT/2015/206	31/10/2015
Devonport-Takapuna	19	Quarry Lake Reserve, Takapuna	10pm to 7am daylight saving and 7pm to 7am outside daylight saving	20/10/2015	DT/2015/206	31/10/2015
Devonport-Takapuna	20	Rahopara Pa, Castor Bay	10pm to 7am daylight saving and 7pm to 7am outside daylight saving	20/10/2015	DT/2015/206	31/10/2015

Local board	Map number	Alcohol ban area	Operative time	Decision date	Decision reference	Commencement date
Devonport-Takapuna	21	St Leonards Beach	10pm to 7am daylight saving and 7pm to 7am outside daylight saving	20/10/2015	DT/2015/206	31/10/2015
Devonport-Takapuna	22	Sylvan Park and Henderson Park	10pm to 7am daylight saving and 7pm to 7am outside daylight saving	20/10/2015	DT/2015/206	31/10/2015
Devonport-Takapuna	23	The Lansdowne Road to Sandy Bay Reserve	10pm to 7am daylight saving and 7pm to 7am outside daylight saving	20/10/2015	DT/2015/206	31/10/2015
Franklin	1	Omana Esplande Reserve	24 hours, 7 days a week	29/09/2015	FR/2015/160	31/10/2015
Franklin	2	Maraetai	24 hours, 7 days a week	29/09/2015	FR/2015/160	31/10/2015
Franklin	3	Umupuia Coastal Reserve	24 hours, 7 days a week	29/09/2015	FR/2015/160	31/10/2015
Franklin	4	Broomfields Point Reserve	24 hours, 7 days a week	29/09/2015	FR/2015/160	31/10/2015
Franklin	5	Hamilton Estate	24 hours, 7 days a week	29/09/2015	FR/2015/160	31/10/2015
Franklin	6	Karioitahi Beach	24 hours, 7 days a week	29/09/2015	FR/2015/160	31/10/2015
Franklin	7	Maraetai Hall Grounds	24 hours, 7 days a week	29/09/2015	FR/2015/160	31/10/2015
Franklin	8	Orere Point Library Grounds	24 hours, 7 days a week	29/09/2015	FR/2015/160	31/10/2015
Franklin	9	Pine Harbour	24 hours, 7 days a week	29/09/2015	FR/2015/160	31/10/2015
Franklin	10	Potts Road Esplanade Reserve	24 hours, 7 days a week	29/09/2015	FR/2015/160	31/10/2015
Franklin	11	Shelly Bay Reserve	24 hours, 7 days a week	29/09/2015	FR/2015/160	31/10/2015
Franklin	12	Sunkist Bay Reserve	24 hours, 7 days a week	29/09/2015	FR/2015/160	31/10/2015
Franklin	13	Te Puru Park	7pm to 7am daily	29/09/2015	FR/2015/160	31/10/2015
Franklin	14	Beachlands Domain	7pm to 7am daily	29/09/2015	FR/2015/160	31/10/2015
Franklin	15	Pukekohe Central Business District Town Centre	7pm to 7am daily	29/09/2015	FR/2015/160	31/10/2015
Franklin	16	Pukekohe Hill Reserve	7pm to 7am daily	29/09/2015	FR/2015/160	31/10/2015
Franklin	17	Rosa Birch Park	7pm to 7am daily	29/09/2015	FR/2015/160	31/10/2015
Franklin	18	Waiuku Central Business District Town Centre	7pm to 7am daily	29/09/2015	FR/2015/160	31/10/2015
Franklin	19	Orere Point Beach Reserve	Holiday (7pm to 7am daily from Friday of Labour weekend to Tuesday of Easter)	29/09/2015	FR/2015/160	31/10/2015
Henderson-Massey	1	Henderson Park	24 hours, 7 days a week	17/09/2015	HM/2015/130	31/10/2015
Henderson-Massey	2	Henderson Town Centre	24 hours, 7 days a week	17/09/2015	HM/2015/130	31/10/2015
Henderson-Massey	3	Te Atatu Town Centre	24 hours, 7 days a week	17/09/2015	HM/2015/130	31/10/2015
Henderson-Massey	4	Te Pai Park	24 hours, 7 days a week	17/09/2015	HM/2015/130	31/10/2015
Henderson-Massey	5	Triangle Park	24 hours, 7 days a week	17/09/2015	HM/2015/130	31/10/2015

Local board	Map number	Alcohol ban area	Operative time	Decision date	Decision reference	Commencement date
Henderson-Massey	6	Westgate Town Centre	24 hours, 7 days a week	17/09/2015	HM/2015/130	31/10/2015
Henderson-Massey	7	Bruce McLaren Memorial Park	7pm to 7am daily	17/09/2015	HM/2015/130	31/10/2015
Henderson-Massey	8	Central Park	7pm to 7am daily	17/09/2015	HM/2015/130	31/10/2015
Henderson-Massey	9	Chapman Strand	7pm to 7am daily	17/09/2015	HM/2015/130	31/10/2015
Henderson-Massey	10	Harbourview Reserve	7pm to 7am daily	17/09/2015	HM/2015/130	31/10/2015
Henderson-Massey	11	Helena Park	7pm to 7am daily	17/09/2015	HM/2015/130	31/10/2015
Henderson-Massey	12	Henderson Valley Park	7pm to 7am daily	17/09/2015	HM/2015/130	31/10/2015
Henderson-Massey	13	Manutewhau Reserve	7pm to 7am daily	17/09/2015	HM/2015/130	31/10/2015
Henderson-Massey	14	Moire Park	7pm to 7am daily	17/09/2015	HM/2015/130	31/10/2015
Henderson-Massey	15	Paremuka Lakeside Reserve	7pm to 7am daily	17/09/2015	HM/2015/130	31/10/2015
Henderson-Massey	16	Ranui Domain	7pm to 7am daily	17/09/2015	HM/2015/130	31/10/2015
Henderson-Massey	17	Starling Park	7pm to 7am daily	17/09/2015	HM/2015/130	31/10/2015
Henderson-Massey	18	Taipari Strand	7pm to 7am daily	17/09/2015	HM/2015/130	31/10/2015
Henderson-Massey	19	Te Rangi Hiroa Reserve/ Birdwood Winery	7pm to 7am daily	17/09/2015	HM/2015/130	31/10/2015
Henderson-Massey	20	Riverpark Reserve	7pm to 7am daily	17/09/2015	HM/2015/130	31/10/2015
Henderson-Massey	21	Royal Reserve	7pm to 7am daily	17/09/2015	HM/2015/130	31/10/2015
Henderson-Massey	22	Rush Creek Walkway	7pm to 7am daily	17/09/2015	HM/2015/130	31/10/2015
Henderson-Massey	23	Woodside Park	7pm to 7am daily	17/09/2015	HM/2015/130	31/10/2015
Hibiscus and Bays	1	Orewa Central Business District	24 hours, 7 days a week	20/05/2015	HB/2015/54	31/10/2015
Hibiscus and Bays	2	Silverdale Village	24 hours, 7 days a week	20/05/2015	HB/2015/54	31/10/2015
Hibiscus and Bays	2A	Manly Esplanade including Lotus Walk, Canaan Way and Canaan Way Reserve	24 hours, 7 days a week	15/11/2017	HB/2017/186	15/11/2017
Hibiscus and Bays	3	Arkles Bay	10pm to 7am daylight saving and 7pm to 7am outside daylight saving	20/05/2015	HB/2015/54	31/10/2015
Hibiscus and Bays	4	Browns Bay	10pm to 7am daylight saving and 7pm to 7am outside daylight saving	20/05/2015	HB/2015/54 HB/2017/186	31/10/2015 15/11/2017
Hibiscus and Bays	5	Campbells Bay	10pm to 7am daylight saving and 7pm to 7am outside daylight saving	20/05/2015	HB/2015/54	31/10/2015
Hibiscus and Bays	6	Churchill Reserve	10pm to 7am daylight saving and 7pm to 7am outside daylight saving	20/05/2015	HB/2015/54	31/10/2015
Hibiscus and Bays	7	Mairangi Bay	10pm to 7am daylight saving and 7pm to 7am outside daylight saving	20/05/2015	HB/2015/54	31/10/2015

Local board	Map number	Alcohol ban area	Operative time	Decision date	Decision reference	Commencement date
Hibiscus and Bays	8	Manly	10pm to 7am daylight saving and 7pm to 7am outside daylight saving	20/05/2015	HB/2015/54	31/10/2015
Hibiscus and Bays	9	Murrays Bay	10pm to 7am daylight saving and 7pm to 7am outside daylight saving	20/05/2015	HB/2015/54	31/10/2015
Hibiscus and Bays	10	Okura Boat Ramp	10pm to 7am daylight saving and 7pm to 7am outside daylight saving	20/05/2015	HB/2015/54	31/10/2015
Hibiscus and Bays	11	Orewa North	10pm to 7am daylight saving and 7pm to 7am outside daylight saving	20/05/2015	HB/2015/54	31/10/2015
Hibiscus and Bays	12	Orewa South	10pm to 7am daylight saving and 7pm to 7am outside daylight saving	20/05/2015	HB/2015/54	31/10/2015
Hibiscus and Bays	13	Red Beach	10pm to 7am daylight saving and 7pm to 7am outside daylight saving	20/05/2015	HB/2015/54	31/10/2015
Hibiscus and Bays	14	Rothesay Bay Beach Reserve	10pm to 7am daylight saving and 7pm to 7am outside daylight saving	20/05/2015	HB/2015/54	31/10/2015
Hibiscus and Bays	15	Stanmore Bay	10pm to 7am daylight saving and 7pm to 7am outside daylight saving	20/05/2015	HB/2015/54	31/10/2015
Hibiscus and Bays	16	Torbay	10pm to 7am daylight saving and 7pm to 7am outside daylight saving	20/05/2015	HB/2015/54	31/10/2015
Hibiscus and Bays	17	Victor Eaves Park	10pm to 7am daylight saving and 7pm to 7am outside daylight saving	20/05/2015	HB/2015/54	31/10/2015
Hibiscus and Bays	18	Waiake Beach	10pm to 7am daylight saving and 7pm to 7am outside daylight saving	20/05/2015	HB/2015/54	31/10/2015
Hibiscus and Bays	19	Whangaparaoa Town Centre	10pm to 7am daylight saving and 7pm to 7am outside daylight saving	20/05/2015	HB/2015/54	31/10/2015
Howick	1	Barry Curtis Park	24 hours, 7 days a week	12/10/2015	HW/2015/146	31/10/2015
Howick	2	Bleakhouse Reserve	24 hours, 7 days a week	12/10/2015	HW/2015/146	31/10/2015
Howick	3	Blundell Park	24 hours, 7 days a week	12/10/2015	HW/2015/146	31/10/2015
Howick	4	Bowscale Place Walkway and Tarnica Park	24 hours, 7 days a week	12/10/2015	HW/2015/146	31/10/2015
Howick	5	Bucklands Beach	24 hours, 7 days a week	12/10/2015	HW/2015/146	31/10/2015
Howick	6	Cascades Walkway	24 hours, 7 days a week	12/10/2015	HW/2015/146	31/10/2015
Howick	7	Cockle Bay	24 hours, 7 days a week	12/10/2015	HW/2015/146	31/10/2015
Howick	8	Eastern Beach	24 hours, 7 days a week	12/10/2015	HW/2015/146	31/10/2015
Howick	9	Falstaff Place and Reserve	24 hours, 7 days a week	12/10/2015	HW/2015/146	31/10/2015
Howick	10	Howick Beach	24 hours, 7 days a week	12/10/2015	HW/2015/146	31/10/2015
Howick	11	Howick Village Town Centre	24 hours, 7 days a week	12/10/2015	HW/2015/146	31/10/2015

Local board	Map number	Alcohol ban area	Operative time	Decision date	Decision reference	Commencement date
Howick	12	Lloyd Elsmore Park	24 hours, 7 days a week	12/10/2015	HW/2015/146	31/10/2015
Howick	13	Marine Parade	24 hours, 7 days a week	12/10/2015	HW/2015/146	31/10/2015
Howick	14	McCahill Views Reserve	24 hours, 7 days a week	12/10/2015	HW/2015/146	31/10/2015
Howick	15	Meadowland Park	24 hours, 7 days a week	12/10/2015	HW/2015/146	31/10/2015
Howick	16	Mellons Bay	24 hours, 7 days a week	12/10/2015	HW/2015/146	31/10/2015
Howick	17	William Green Domain	24 hours, 7 days a week	12/10/2015	HW/2015/146	31/10/2015
Howick	18	Earnslaw Park	7pm to 7am daily	12/10/2015	HW/2015/146	31/10/2015
Howick	19	Howick Domain	7pm to 7am daily	12/10/2015	HW/2015/146	31/10/2015
Howick	20	Highbrook boat-ramp, carpark, Lady Fisher Place and part of Waiouru Road	24 hours, 7 days a week	8/12/2022	HW/2022/201	8/12/2022
Kaipātiki	1	Beach Haven Wharves	24 hours, 7 days a week	13/05/2015	KT/2015/70	31/10/2015
Kaipātiki	2	Northcote Central	24 hours, 7 days a week	13/05/2015	KT/2015/70	31/10/2015
Kaipātiki	3	Poenamo car park	7pm to 7am daily	13/05/2015	KT/2015/70	31/10/2015
Kaipātiki	4	Birkenhead Town Centre/ Birkenhead War Memorial Park	24 hours, 7 days a week (Town Centre)/10pm to 7am daylight saving and 7pm to 7am outside daylight saving (Park)	13/05/2015 17/11/2021	KT/2015/70 KT/2021/198	31/10/2015 17/11/2021
Kaipātiki	5	Birkenhead Wharf/Hinemoa Park	10pm to 7am daylight saving and 7pm to 7am outside daylight saving	13/05/2015	KT/2015/70	31/10/2015
Kaipātiki	6	Chelsea Estate Heritage Park	10pm to 7am daylight saving and 7pm to 7am outside daylight saving	13/05/2015	KT/2015/70	31/10/2015
Kaipātiki	7	Downing Street Domain	24 hours, 7 days a week	19/06/2019	KT/2015/70 & KT/2019/112	31/10/2015
Kaipātiki	8	Island Bay Reserve	10pm to 7am daylight saving and 7pm to 7am outside daylight saving	13/05/2015	KT/2015/70	31/10/2015
Kaipātiki	9	Little Shoal Bay Reserve car park	10pm to 7am daylight saving and 7pm to 7am outside daylight saving	13/05/2015	KT/2015/70	31/10/2015
Kaipātiki	10	Manuka Reserve	10pm to 7am daylight saving and 7pm to 7am outside daylight saving	13/05/2015	KT/2015/70	31/10/2015
Kaipātiki	11	Marlborough Park	10pm to 7am daylight saving and 7pm to 7am outside daylight saving	13/05/2015	KT/2015/70	31/10/2015
Kaipātiki	12	Shepherds Park	10pm to 7am daylight saving and 7pm to 7am outside daylight saving	13/05/2015	KT/2015/70	31/10/2015

Local board	Map number	Alcohol ban area	Operative time	Decision date	Decision reference	Commencement date
Kaipātiki	13	Sulphur Beach Reserve	10pm to 7am daylight saving and 7pm to 7am outside daylight saving	13/05/2015	KT/2015/70	31/10/2015
Kaipātiki	14	Tui Park	10pm to 7am daylight saving and 7pm to 7am outside daylight saving	13/05/2015	KT/2015/70	31/10/2015
Māngere-Ōtāhuhu	1	Blake Road Reserve and Radonich Reserve	24 hours, 7 days a week	16/09/2015	MO/2015/157	31/10/2015
Māngere-Ōtāhuhu	2	Calvert Park	24 hours, 7 days a week	16/09/2015	MO/2015/157	31/10/2015
Māngere-Ōtāhuhu	3	Cyclamen Park	24 hours, 7 days a week	16/09/2015	MO/2015/157	31/10/2015
Māngere-Ōtāhuhu	4	Hastie Avenue Reserve	24 hours, 7 days a week	16/09/2015	MO/2015/157	31/10/2015
Māngere-Ōtāhuhu	5	Lippiatt Reserve	24 hours, 7 days a week	16/09/2015	MO/2015/157	31/10/2015
Māngere-Ōtāhuhu	6	Luke Street Reserve	24 hours, 7 days a week	16/09/2015	MO/2015/157	31/10/2015
Māngere-Ōtāhuhu	7	Mangere Bridge Town Centre, Kiwi Esplanade Reserve, Waterfront Road Reserve and Rose Garden	24 hours, 7 days a week	12/12/2018	MO/2015/157 & MO/2018/217	31/10/2015
Māngere-Ōtāhuhu	8	Mangere Centre Park	24 hours, 7 days a week	16/09/2015	MO/2015/157	31/10/2015
Māngere-Ōtāhuhu	9	Mangere East Town Centre	24 hours, 7 days a week	22/02/2016	MO/2015/157 & OP/2016/9	31/10/2015
Māngere-Ōtāhuhu	10	Mangere Mountain Education Centre	24 hours, 7 days a week	16/09/2015	MO/2015/157	31/10/2015
Māngere-Ōtāhuhu	11	Mangere Town Centre	24 hours, 7 days a week	16/09/2015	MO/2015/157	31/10/2015
Māngere-Ōtāhuhu	12	Manukau Park (Muir Avenue)	24 hours, 7 days a week	16/09/2015	MO/2015/157	31/10/2015
Māngere-Ōtāhuhu	13	Moyle Park	24 hours, 7 days a week	16/09/2015	MO/2015/157	31/10/2015
Māngere-Ōtāhuhu	14	Old School Reserve	24 hours, 7 days a week	16/09/2015	MO/2015/157	31/10/2015
Māngere-Ōtāhuhu	15	Otahuhu Town Centre	24 hours, 7 days a week	16/09/2015	MO/2015/157	31/10/2015
Māngere-Ōtāhuhu	16	Seaside Park	24 hours, 7 days a week	16/09/2015	MO/2015/157	31/10/2015
Māngere-Ōtāhuhu	17	Sutton Park	24 hours, 7 days a week	16/09/2015	MO/2015/157	31/10/2015
Māngere-Ōtāhuhu	18	Te Puea Marae Reserve	24 hours, 7 days a week	16/09/2015	MO/2015/157	31/10/2015
Māngere-Ōtāhuhu	19	Williams Park	24 hours, 7 days a week	16/09/2015	MO/2015/157	31/10/2015
Māngere-Ōtāhuhu	20	Windrush Park (Pershore Reserve)	24 hours, 7 days a week	16/09/2015	MO/2015/157	31/10/2015
Māngere-Ōtāhuhu	21	Yates Park	24 hours, 7 days a week	16/09/2015	MO/2015/157	31/10/2015
Māngere-Ōtāhuhu	22	Boggust Park	7pm to 7am daily	16/09/2015	MO/2015/157	31/10/2015
Māngere-Ōtāhuhu	23	House Park	7pm to 7am daily	16/09/2015	MO/2015/157	31/10/2015
Māngere-Ōtāhuhu	24	Imrie Park	7pm to 7am daily	16/09/2015	MO/2015/157	31/10/2015

Local board	Map number	Alcohol ban area	Operative time	Decision date	Decision reference	Commencement date
Māngere-Ōtāhuhu	25	Island Road	7pm to 7am daily	16/09/2015	MO/2015/157	31/10/2015
Māngere-Ōtāhuhu	26	Mervan Street Reserve	7pm to 7am daily	16/09/2015	MO/2015/157	31/10/2015
Māngere-Ōtāhuhu	27	Norana Avenue Reserve	7pm to 7am daily	16/09/2015	MO/2015/157	31/10/2015
Māngere-Ōtāhuhu	28	Tilberg Park	7pm to 7am daily	16/09/2015	MO/2015/157	31/10/2015
Māngere-Ōtāhuhu	29	Vickers Park	7pm to 7am daily	16/09/2015	MO/2015/157	31/10/2015
Māngere-Ōtāhuhu	30	Otahuhu Cemetery	7pm to 7am daily	16/09/2015	MO/2015/157	31/10/2015
Māngere-Ōtāhuhu	31	Portage Canal Foreshore Reserve	7pm to 7am daily	16/06/2016	MO/2015/157 & MO/2016/79	31/10/2015
Māngere-Ōtāhuhu	32	Rock Daisy Crescent Reserve	7pm to 7am daily	16/09/2015	MO/2015/157	31/10/2015
Māngere-Ōtāhuhu	33	Schroffs Reserve	7pm to 7am daily	16/09/2015	MO/2015/157	31/10/2015
Māngere-Ōtāhuhu	34	Anarahi Park	10pm to 7am daylight saving and 7pm to 7am outside daylight saving	16/09/2015	MO/2015/157	31/10/2015
Māngere-Ōtāhuhu	35	Bedingfield Memorial Park	10pm to 7am daylight saving and 7pm to 7am outside daylight saving	16/09/2015	MO/2015/157	31/10/2015
Māngere-Ōtāhuhu	36	Convoy Lane	10pm to 7am daylight saving and 7pm to 7am outside daylight saving	16/09/2015	MO/2015/157	31/10/2015
Māngere-Ōtāhuhu	37	Frank Grey Foreshore	10pm to 7am daylight saving and 7pm to 7am outside daylight saving	16/09/2015	MO/2015/157	31/10/2015
Māngere-Ōtāhuhu	38	Luke Foreshore Reserve	10pm to 7am daylight saving and 7pm to 7am outside daylight saving	16/09/2015	MO/2015/157	31/10/2015
Māngere-Ōtāhuhu (made by Regulatory and Bylaws Committee)	1	Te Pane o Mataoho/Te Ara Puera (Māngere Mt)	24 hours, 7 days a week	13/10/2015	RBC/2015/41	31/10/2015
Manurewa	1	Alex Maich Park (Maich Park)	24 hours, 7 days a week	8/10/2015	MR/2015/197	31/10/2015
Manurewa	2	Alice Park	24 hours, 7 days a week	8/10/2015	MR/2015/197	31/10/2015
Manurewa	3	Anderson Park	24 hours, 7 days a week	8/10/2015	MR/2015/197	31/10/2015
Manurewa	4	Arline Schutz Park (Halver Park)	24 hours, 7 days a week	8/10/2015	MR/2015/197	31/10/2015
Manurewa	5	Aronia Park	24 hours, 7 days a week	8/10/2015	MR/2015/197	31/10/2015
Manurewa	6	Azalea Park	24 hours, 7 days a week	8/10/2015	MR/2015/197	31/10/2015
Manurewa	7	Beatty Ave Manurewa Railway Park & Ride	24 hours, 7 days a week	8/10/2015	MR/2015/197	31/10/2015
Manurewa	8	Beaumonts Park	24 hours, 7 days a week	8/10/2015	MR/2015/197	31/10/2015
Manurewa	9	Burundi Avenue Foreshore	24 hours, 7 days a week	8/10/2015	MR/2015/197	31/10/2015
Manurewa	10	Dalgety Drive Corner	24 hours, 7 days a week	8/10/2015	MR/2015/197	31/10/2015

Local board	Map number	Alcohol ban area	Operative time	Decision date	Decision reference	Commencement date
Manurewa	11	David Nathan Park	24 hours, 7 days a week	8/10/2015	MR/2015/197	31/10/2015
Manurewa	12	David Park	24 hours, 7 days a week	8/10/2015	MR/2015/197	31/10/2015
Manurewa	13	De Havilland Park (Everglade Drive No 4)	24 hours, 7 days a week	8/10/2015	MR/2015/197	31/10/2015
Manurewa	14	Druces Reserve	24 hours, 7 days a week	8/10/2015	MR/2015/197	31/10/2015
Manurewa	15	Felicia Park	24 hours, 7 days a week	8/10/2015	MR/2015/197	31/10/2015
Manurewa	16	Finlayson Ave Reserve	24 hours, 7 days a week	8/10/2015	MR/2015/197	31/10/2015
Manurewa	17	Frobisher Way Reserve	24 hours, 7 days a week	8/10/2015	MR/2015/197	31/10/2015
Manurewa	18	Gallaher Park	24 hours, 7 days a week	8/10/2015	MR/2015/197	31/10/2015
Manurewa	19	Hanford Place Foreshore	24 hours, 7 days a week	8/10/2015	MR/2015/197	31/10/2015
Manurewa	20	Hazards Road Foreshore	24 hours, 7 days a week	8/10/2015	MR/2015/197	31/10/2015
Manurewa	21	Homai Safety Corridor network of streets and parks	24 hours, 7 days a week	8/10/2015	MR/2015/197	31/10/2015
Manurewa	22	Honey Park	24 hours, 7 days a week	8/10/2015	MR/2015/197	31/10/2015
Manurewa	23	Hyperion Park	24 hours, 7 days a week	8/10/2015	MR/2015/197	31/10/2015
Manurewa	24	Innismara Avenue Reserve	24 hours, 7 days a week	8/10/2015	MR/2015/197	31/10/2015
Manurewa	25	Inverell Park	24 hours, 7 days a week	8/10/2015	MR/2015/197	31/10/2015
Manurewa	26	John Walker Park	24 hours, 7 days a week	8/10/2015	MR/2015/197	31/10/2015
Manurewa	27	Keith Park Reserve, Roys Road Manurewa	24 hours, 7 days a week	8/10/2015	MR/2015/197	31/10/2015
Manurewa	28	Keri Anne Park	24 hours, 7 days a week	8/10/2015	MR/2015/197	31/10/2015
Manurewa	29	Kirton Crescent Reserve	24 hours, 7 days a week	8/10/2015	MR/2015/197	31/10/2015
Manurewa	30	Leabank Park	24 hours, 7 days a week	8/10/2015	MR/2015/197	31/10/2015
Manurewa	31	Leaver Park	24 hours, 7 days a week	8/10/2015	MR/2015/197	31/10/2015
Manurewa	32	Manurewa Netball Complex	24 hours, 7 days a week	8/10/2015	MR/2015/197	31/10/2015
Manurewa	33	Manurewa Town Centre	24 hours, 7 days a week	11/02/2016	MR/2016/9	31/10/2015
Manurewa	34	McVilly Road Reserve	24 hours, 7 days a week	8/10/2015	MR/2015/197	31/10/2015
Manurewa	35	Mountfort Park	24 hours, 7 days a week	8/10/2015	MR/2015/197	31/10/2015
Manurewa	36	Pallant Park	24 hours, 7 days a week	8/10/2015	MR/2015/197	31/10/2015
Manurewa	37	Rata Vine Stream Reserve	24 hours, 7 days a week	8/10/2015	MR/2015/197	31/10/2015
Manurewa	38	Rowandale Reserve	24 hours, 7 days a week	8/10/2015	MR/2015/197	31/10/2015
Manurewa	39	Saralee Drive Reserve (Alfriston Park)	24 hours, 7 days a week	8/10/2015	MR/2015/197	31/10/2015
Manurewa	40	Shifnal Reserve	24 hours, 7 days a week	8/10/2015	MR/2015/197	31/10/2015
Manurewa	41	St Annes Foreshore	24 hours, 7 days a week	8/10/2015	MR/2015/197	31/10/2015

Local board	Map number	Alcohol ban area	Operative time	Decision date	Decision reference	Commencement date
Manurewa	42	Tadmire Park	24 hours, 7 days a week	8/10/2015	MR/2015/197	31/10/2015
Manurewa	43	The Dale	24 hours, 7 days a week	8/10/2015	MR/2015/197	31/10/2015
Manurewa	44	The Islay Walkways	24 hours, 7 days a week	8/10/2015	MR/2015/197	31/10/2015
Manurewa	45	Tington Park	24 hours, 7 days a week	8/10/2015	MR/2015/197	31/10/2015
Manurewa	46	Totara Park	24 hours, 7 days a week	8/10/2015	MR/2015/197	31/10/2015
Manurewa	47	Trevor Hosken Drive Reserve	24 hours, 7 days a week	8/10/2015	MR/2015/197	31/10/2015
Manurewa	48	Trimdon Street Reserve	24 hours, 7 days a week	8/10/2015	MR/2015/197	31/10/2015
Manurewa	49	Volante Reserve	24 hours, 7 days a week	8/10/2015	MR/2015/197	31/10/2015
Manurewa	50	Volta Park	24 hours, 7 days a week	8/10/2015	MR/2015/197	31/10/2015
Manurewa	51	Wattle Downs Esplanade Reserve	24 hours, 7 days a week	8/10/2015	MR/2015/197	31/10/2015
Manurewa	52	Wattle Farm Ponds Reserve	24 hours, 7 days a week	8/10/2015	MR/2015/197	31/10/2015
Manurewa	53	Weymouth Hall Grounds	24 hours, 7 days a week	8/10/2015	MR/2015/197	31/10/2015
Manurewa	54	Weymouth Park	24 hours, 7 days a week	8/10/2015	MR/2015/197	31/10/2015
Manurewa	55	Wiri Stream Reserve	24 hours, 7 days a week	8/10/2015	MR/2015/197	31/10/2015
Manurewa	56	Wordsworth Road Reserve	24 hours, 7 days a week	8/10/2015	MR/2015/197	31/10/2015
Manurewa	57	Feasegate Street Reserve	7pm to 7am daily	8/10/2015	MR/2015/197	31/10/2015
Manurewa	58	Finlayson Community House Reserve	7pm to 7am daily	8/10/2015	MR/2015/197	31/10/2015
Manurewa	59	Laurie Gibbons Memorial Park	7pm to 7am daily	8/10/2015	MR/2015/197	31/10/2015
Manurewa	60	Pitt Avenue Foreshore	7pm to 7am daily	8/10/2015	MR/2015/197	31/10/2015
Manurewa	61	Tington Wetlands Reserve	7pm to 7am daily	8/10/2015	MR/2015/197	31/10/2015
Manurewa	62	Totara Park and the grassed area of Eugenia Reserve adjoining Eugenia Rise	7pm to 7am daily	8/10/2015	MR/2015/197	31/10/2015
Maungakiekie-Tāmaki	1	Eastview Reserve	24 hours, 7 days a week	15/10/2015	MT/2015/164	31/10/2015
Maungakiekie-Tāmaki	2	Ellerslie State Highway 1 footbridge	24 hours, 7 days a week	15/10/2015	MT/2015/164	31/10/2015
Maungakiekie-Tāmaki	3	Elstree Reserve (including associated car parks)	24 hours, 7 days a week	15/10/2015	MT/2015/164	31/10/2015
Maungakiekie-Tāmaki	4	Fergusson Domain and Paihia Reserve (and surrounding streets)	24 hours, 7 days a week	15/10/2015	MT/2015/164	31/10/2015
Maungakiekie-Tāmaki	5	Flat Rock Reserve	24 hours, 7 days a week	15/10/2015	MT/2015/164	31/10/2015

Local board	Map number	Alcohol ban area	Operative time	Decision date	Decision reference	Commencement date
Maungakiekie-Tāmaki	6	Glen Innes Town Centre	24 hours, 7 days a week	15/10/2015	MT/2015/164 & OR/2016/55	31/10/2015
Maungakiekie-Tāmaki	7	Hillside Corner Reserve	24 hours, 7 days a week	15/10/2015	MT/2015/164	31/10/2015
Maungakiekie-Tāmaki	8	Ian Shaw Park	24 hours, 7 days a week	15/10/2015	MT/2015/164	31/10/2015
Maungakiekie-Tāmaki	9	Jolson Reserve	24 hours, 7 days a week	15/10/2015	MT/2015/164	31/10/2015
Maungakiekie-Tāmaki	10	Kotuku Reserve	24 hours, 7 days a week	15/10/2015	MT/2015/164	31/10/2015
Maungakiekie-Tāmaki	11	Maybury Reserve	24 hours, 7 days a week	15/10/2015	MT/2015/164	31/10/2015
Maungakiekie-Tāmaki	12	McManus Park	24 hours, 7 days a week	15/10/2015	MT/2015/164 RBC/2016/14	31/10/2015
Maungakiekie-Tāmaki	13	Onehunga Town Centre	24 hours, 7 days a week	15/10/2015	MT/2015/164	31/10/2015
Maungakiekie-Tāmaki	14	Panmure Town Centre	24 hours, 7 days a week	15/10/2015	MT/2015/164	31/10/2015
Maungakiekie-Tāmaki	15	Point England Reserve	24 hours, 7 days a week	15/10/2015	MT/2015/164	31/10/2015
Maungakiekie-Tāmaki	16	Talbot Park	24 hours, 7 days a week	15/10/2015	MT/2015/164	31/10/2015
Maungakiekie-Tāmaki	17	Taniwha Reserve	24 hours, 7 days a week	15/10/2015	MT/2015/164	31/10/2015
Maungakiekie-Tāmaki	18	Taurima Reserve	24 hours, 7 days a week	15/10/2015	MT/2015/164	31/10/2015
Maungakiekie-Tāmaki	19	Torino Reserve	24 hours, 7 days a week	15/10/2015	MT/2015/164	31/10/2015
Maungakiekie-Tāmaki	20	Vic Cowen Park	24 hours, 7 days a week	25/07/2017	MT/2017/119	25/07/2017
Maungakiekie-Tāmaki	21	Waipuna Recreation Area	24 hours, 7 days a week	15/10/2015	MT/2015/164	31/10/2015
Maungakiekie-Tāmaki	22	Wimbledon Reserve	24 hours, 7 days a week	15/10/2015	MT/2015/164	31/10/2015
Maungakiekie-Tāmaki	23	37a Fenchurch Street	10pm to 7am daylight saving and 7pm to 7am outside daylight saving	15/10/2015	MT/2015/164	31/10/2015
Maungakiekie-Tāmaki	24	Alcock Reserve	10pm to 7am daylight saving and 7pm to 7am outside daylight saving	15/10/2015	MT/2015/164	31/10/2015
Maungakiekie-Tāmaki	25	Apirana Reserve	10pm to 7am daylight saving and 7pm to 7am outside daylight saving	15/10/2015	MT/2015/164	31/10/2015
Maungakiekie-Tāmaki	26	Bertrand Reserve	10pm to 7am daylight saving and 7pm to 7am outside daylight saving	15/10/2015	MT/2015/164	31/10/2015
Maungakiekie-Tāmaki	27	Bill McKinlay Park	10pm to 7am daylight saving and 7pm to 7am outside daylight saving	15/10/2015	MT/2015/164	31/10/2015
Maungakiekie-Tāmaki	28	Buchanan Park	10pm to 7am daylight saving and 7pm to 7am outside daylight saving	15/10/2015	MT/2015/164	31/10/2015
Maungakiekie-Tāmaki	29	Captain Springs Reserve	10pm to 7am daylight saving and 7pm to 7am outside daylight saving	15/10/2015	MT/2015/164	31/10/2015
Maungakiekie-Tāmaki	30	Church Street Corner Reserve	10pm to 7am daylight saving and 7pm to 7am outside daylight saving	15/10/2015	MT/2015/164	31/10/2015

Local board	Map number	Alcohol ban area	Operative time	Decision date	Decision reference	Commencement date
Maungakiekie-Tāmaki	31	Church Street Reserve	10pm to 7am daylight saving and 7pm to 7am outside daylight saving	15/10/2015	MT/2015/164	31/10/2015
Maungakiekie-Tāmaki	32	Court Crescent Reserve	10pm to 7am daylight saving and 7pm to 7am outside daylight saving	15/10/2015	MT/2015/164	31/10/2015
Maungakiekie-Tāmaki	33	Dunkirk Reserve	10pm to 7am daylight saving and 7pm to 7am outside daylight saving	15/10/2015	MT/2015/164	31/10/2015
Maungakiekie-Tāmaki	34	Elstree North Reserve (including associated car park)	10pm to 7am daylight saving and 7pm to 7am outside daylight saving	15/10/2015	MT/2015/164	31/10/2015
Maungakiekie-Tāmaki	35	Hamlin Park (including associated car park)	10pm to 7am daylight saving and 7pm to 7am outside daylight saving	15/10/2015	MT/2015/164	31/10/2015
Maungakiekie-Tāmaki	36	Harrison Reserve	10pm to 7am daylight saving and 7pm to 7am outside daylight saving	15/10/2015	MT/2015/164	31/10/2015
Maungakiekie-Tāmaki	37	Hobson Reserve	10pm to 7am daylight saving and 7pm to 7am outside daylight saving	15/10/2015	MT/2015/164	31/10/2015
Maungakiekie-Tāmaki	38	Hochstetter Pond	10pm to 7am daylight saving and 7pm to 7am outside daylight saving	15/10/2015	MT/2015/164	31/10/2015
Maungakiekie-Tāmaki	39	Hornes Reserve	10pm to 7am daylight saving and 7pm to 7am outside daylight saving	15/10/2015	MT/2015/164	31/10/2015
Maungakiekie-Tāmaki	40	Jellicoe Park	10pm to 7am daylight saving and 7pm to 7am outside daylight saving	15/10/2015	MT/2015/164	31/10/2015
Maungakiekie-Tāmaki	41	Joe Wolfe Reserve	10pm to 7am daylight saving and 7pm to 7am outside daylight saving	15/10/2015	MT/2015/164	31/10/2015
Maungakiekie-Tāmaki	42	Johnson Reserve	10pm to 7am daylight saving and 7pm to 7am outside daylight saving	15/10/2015	MT/2015/164	31/10/2015
Maungakiekie-Tāmaki	43	Jordan Park	10pm to 7am daylight saving and 7pm to 7am outside daylight saving	15/10/2015	MT/2015/164	31/10/2015
Maungakiekie-Tāmaki	44	Lavas Reserve	10pm to 7am daylight saving and 7pm to 7am outside daylight saving	15/10/2015	MT/2015/164	31/10/2015
Maungakiekie-Tāmaki	45	Leybourne Circle Reserve	10pm to 7am daylight saving and 7pm to 7am outside daylight saving	15/10/2015	MT/2015/164	31/10/2015
Maungakiekie-Tāmaki	46	Longford Reserve	10pm to 7am daylight saving and 7pm to 7am outside daylight saving	15/10/2015	MT/2015/164	31/10/2015
Maungakiekie-Tāmaki	47	Martin Reserve	10pm to 7am daylight saving and 7pm to 7am outside daylight saving	15/10/2015	MT/2015/164	31/10/2015

Local board	Map number	Alcohol ban area	Operative time	Decision date	Decision reference	Commencement date
Maungakiekie-Tāmaki	48	Mauinaina West Reserve	10pm to 7am daylight saving and 7pm to 7am outside daylight saving	15/10/2015	MT/2015/164	31/10/2015
Maungakiekie-Tāmaki	49	Mt Wellington War Memorial Reserve	10pm to 7am daylight saving and 7pm to 7am outside daylight saving	15/10/2015	MT/2015/164	31/10/2015
Maungakiekie-Tāmaki	50	Onehunga Bay Reserve	10pm to 7am daylight saving and 7pm to 7am outside daylight saving	15/10/2015	MT/2015/164	31/10/2015
Maungakiekie-Tāmaki	51	Onehunga Foreshore restoration reserve (Taumanu Reserve)	10pm to 7am daylight saving and 7pm to 7am outside daylight saving	15/10/2015	MT/2015/164 & PKTPP/2016/118	31/10/2015
Maungakiekie-Tāmaki	52	Panmure Basin	10pm to 7am daylight saving and 7pm to 7am outside daylight saving	15/10/2015	MT/2015/164	31/10/2015
Maungakiekie-Tāmaki	53	Panmure Wharf Reserve	10pm to 7am daylight saving and 7pm to 7am outside daylight saving	15/10/2015	MT/2015/164	31/10/2015
Maungakiekie-Tāmaki	54	Riverside Reserve	10pm to 7am daylight saving and 7pm to 7am outside daylight saving	15/10/2015	MT/2015/164	31/10/2015
Maungakiekie-Tāmaki	55	Rockfield Reserve	10pm to 7am daylight saving and 7pm to 7am outside daylight saving	15/10/2015	MT/2015/164	31/10/2015
Maungakiekie-Tāmaki	56	Rowe Reserve	10pm to 7am daylight saving and 7pm to 7am outside daylight saving	15/10/2015	MT/2015/164	31/10/2015
Maungakiekie-Tāmaki	57	Station Road Pleasance	10pm to 7am daylight saving and 7pm to 7am outside daylight saving	15/10/2015	MT/2015/164	31/10/2015
Maungakiekie-Tāmaki	58	Sultan Street State Highway 1 underpass	10pm to 7am daylight saving and 7pm to 7am outside daylight saving	15/10/2015	MT/2015/164	31/10/2015
Maungakiekie-Tāmaki	59	Taiere Reserve	10pm to 7am daylight saving and 7pm to 7am outside daylight saving	15/10/2015	MT/2015/164	31/10/2015
Maungakiekie-Tāmaki	60	Thompson Park	10pm to 7am daylight saving and 7pm to 7am outside daylight saving	15/10/2015	MT/2015/164	31/10/2015
Maungakiekie-Tāmaki	61	Waikaraka Cemetery	10pm to 7am daylight saving and 7pm to 7am outside daylight saving	15/10/2015	MT/2015/164	31/10/2015
Maungakiekie-Tāmaki	62	Waikaraka Park	10pm to 7am daylight saving and 7pm to 7am outside daylight saving	15/10/2015	MT/2015/164	31/10/2015
Maungakiekie-Tāmaki	63	Waikaraka Walkway/Cycleway	10pm to 7am daylight saving and 7pm to 7am outside daylight saving	15/10/2015	MT/2015/164	31/10/2015
Maungakiekie-Tāmaki	64	Wai-o-taiki Nature Reserve (and adjoining car park area)	10pm to 7am daylight saving and 7pm to 7am outside daylight saving	15/10/2015	MT/2015/164	31/10/2015

Local board	Map number	Alcohol ban area	Operative time	Decision date	Decision reference	Commencement date
Maungakiekie-Tāmaki	65	West Tamaki Reserve	10pm to 7am daylight saving and 7pm to 7am outside daylight saving	15/10/2015	MT/2015/164	31/10/2015
Maungakiekie-Tāmaki	66	Concert Alcohol Ban on streets surrounding Mt Smart Stadium	6am on the day of a concert to 6am on the day after a concert	22/08/2017	MT/2017/144	22/08/2017
Maungakiekie-Tāmaki (made by Regulatory and Bylaws Committee)	5	Maungakiekie (One Tree Hill)	10pm to 7am daylight saving and 7pm to 7am outside daylight saving	13/10/2015	RBC/2015/41	31/10/2015
Orākei	1	Ellerslie Town Centre	24 hours, 7 days a week	1/10/2015	CP2015/19977	31/10/2015
Orākei	2	Glendowie Community Centre	24 hours, 7 days a week	1/10/2015	CP2015/19977	31/10/2015
Orākei	3	Michaels Avenue Reserve (artificial pitches, car parks and cricket nets)	24 hours, 7 days a week	1/10/2015	CP2015/19977	31/10/2015
Orākei	4	Remuera Town Centre	24 hours, 7 days a week	1/10/2015	CP2015/19977	31/10/2015
Orākei	5	St Heliers Town Centre	24 hours, 7 days a week	1/10/2015	CP2015/19977	31/10/2015
Orākei	6	Achilles Point	10pm to 7am daylight saving and 7pm to 7am outside daylight saving	1/10/2015	CP2015/19977	31/10/2015
Orākei	7	Cliff Road car parking; Springcombe Road; Glover Road; Waitara Road; Waimarie Street/Riddell Road car park	10pm to 7am daylight saving and 7pm to 7am outside daylight saving	1/10/2015	CP2015/19977	31/10/2015
Orākei	8	Allen Johnston Reserve	10pm to 7am daylight saving and 7pm to 7am outside daylight saving	1/10/2015	CP2015/19977	31/10/2015
Orākei	9	Andersons Beach Reserve	10pm to 7am daylight saving and 7pm to 7am outside daylight saving	1/10/2015	CP2015/19977	31/10/2015
Orākei	10	Aotea Reserve	10pm to 7am daylight saving and 7pm to 7am outside daylight saving	1/10/2015	CP2015/19977	31/10/2015
Orākei	11	Apihai Reserve	10pm to 7am daylight saving and 7pm to 7am outside daylight saving	1/10/2015	CP2015/19977	31/10/2015
Orākei	12	Ascot Park	10pm to 7am daylight saving and 7pm to 7am outside daylight saving	1/10/2015	CP2015/19977	31/10/2015
Orākei	13	Atkin Reserve A (North)	10pm to 7am daylight saving and 7pm to 7am outside daylight saving	1/10/2015	CP2015/19977	31/10/2015
Orākei	14	Atkin Reserve B (Middle)	10pm to 7am daylight saving and 7pm to 7am outside daylight saving	1/10/2015	CP2015/19977	31/10/2015

Local board	Map number	Alcohol ban area	Operative time	Decision date	Decision reference	Commencement date
Orākei	15	Atkin Reserve C (South)	10pm to 7am daylight saving and 7pm to 7am outside daylight saving	1/10/2015	CP2015/19977	31/10/2015
Orākei	16	Bassett Reserve	10pm to 7am daylight saving and 7pm to 7am outside daylight saving	1/10/2015	CP2015/19977	31/10/2015
Orākei	17	Bluestone Park	10pm to 7am daylight saving and 7pm to 7am outside daylight saving	1/10/2015	CP2015/19977	31/10/2015
Orākei	18	Bonnie Brae Reserve	10pm to 7am daylight saving and 7pm to 7am outside daylight saving	1/10/2015	CP2015/19977	31/10/2015
Orākei	19	Canon Park	10pm to 7am daylight saving and 7pm to 7am outside daylight saving	1/10/2015	CP2015/19977	31/10/2015
Orākei	20	Cawley Street Reserve	10pm to 7am daylight saving and 7pm to 7am outside daylight saving	1/10/2015	CP2015/19977	31/10/2015
Orākei	21	Celtic Crescent Reserve	10pm to 7am daylight saving and 7pm to 7am outside daylight saving	1/10/2015	CP2015/19977	31/10/2015
Orākei	22	Churchill Park	10pm to 7am daylight saving and 7pm to 7am outside daylight saving	1/10/2015	CP2015/19977	31/10/2015
Orākei	23	Cliff Face Park	10pm to 7am daylight saving and 7pm to 7am outside daylight saving	1/10/2015	CP2015/19977	31/10/2015
Orākei	24	Cliff Road	10pm to 7am daylight saving and 7pm to 7am outside daylight saving	1/10/2015	CP2015/19977	31/10/2015
Orākei	25	Colin Maiden Park	10pm to 7am daylight saving and 7pm to 7am outside daylight saving	1/10/2015	CP2015/19977	31/10/2015
Orākei	26	Cranbrook Reserve	10pm to 7am daylight saving and 7pm to 7am outside daylight saving	1/10/2015	CP2015/19977	31/10/2015
Orākei	27	Crossfield Reserve sportsgrounds	10pm to 7am daylight saving and 7pm to 7am outside daylight saving	1/10/2015	CP2015/19977	31/10/2015
Orākei	28	Derby Downs Domain	10pm to 7am daylight saving and 7pm to 7am outside daylight saving	1/10/2015	CP2015/19977	31/10/2015
Orākei	29	Dingle Dell Reserve	10pm to 7am daylight saving and 7pm to 7am outside daylight saving	1/10/2015	CP2015/19977	31/10/2015
Orākei	30	Ellerslie Domain	10pm to 7am daylight saving and 7pm to 7am outside daylight saving	1/10/2015	CP2015/19977	31/10/2015
Orākei	31	Fancourt Reserve	10pm to 7am daylight saving and 7pm to 7am outside daylight saving	1/10/2015	CP2015/19977	31/10/2015

Local board	Map number	Alcohol ban area	Operative time	Decision date	Decision reference	Commencement date
Orākei	32	Fenton Circus	10pm to 7am daylight saving and 7pm to 7am outside daylight saving	1/10/2015	CP2015/19977	31/10/2015
Orākei	33	Fissure Park	10pm to 7am daylight saving and 7pm to 7am outside daylight saving	1/10/2015	CP2015/19977	31/10/2015
Orākei	34	Gentlemans Walkway	10pm to 7am daylight saving and 7pm to 7am outside daylight saving	1/10/2015	CP2015/19977	31/10/2015
Orākei	35	Glen Atkinson Reserve A	10pm to 7am daylight saving and 7pm to 7am outside daylight saving	1/10/2015	CP2015/19977	31/10/2015
Orākei	36	Glen Atkinson Reserve B	10pm to 7am daylight saving and 7pm to 7am outside daylight saving	1/10/2015	CP2015/19977	31/10/2015
Orākei	37	Glendowie Park	10pm to 7am daylight saving and 7pm to 7am outside daylight saving	1/10/2015	CP2015/19977	31/10/2015
Orākei	38	Glendowie Park Berm	10pm to 7am daylight saving and 7pm to 7am outside daylight saving	1/10/2015	CP2015/19977	31/10/2015
Orākei	39	Glover Park	10pm to 7am daylight saving and 7pm to 7am outside daylight saving	1/10/2015	CP2015/19977	31/10/2015
Orākei	40	Grampian Road Retention Dam	10pm to 7am daylight saving and 7pm to 7am outside daylight saving	1/10/2015	CP2015/19977	31/10/2015
Orākei	41	Hapimana Reserve	10pm to 7am daylight saving and 7pm to 7am outside daylight saving	1/10/2015	CP2015/19977	31/10/2015
Orākei	42	Hapua Reserve	10pm to 7am daylight saving and 7pm to 7am outside daylight saving	1/10/2015	CP2015/19977	31/10/2015
Orākei	43	Heritage Rise Reserve	10pm to 7am daylight saving and 7pm to 7am outside daylight saving	1/10/2015	CP2015/19977	31/10/2015
Orākei	44	Hobson Bay Walkway 1	10pm to 7am daylight saving and 7pm to 7am outside daylight saving	1/10/2015	CP2015/19977	31/10/2015
Orākei	45	Hobson Bay Walkway 2	10pm to 7am daylight saving and 7pm to 7am outside daylight saving	1/10/2015	CP2015/19977	31/10/2015
Orākei	46	Judge Arney Reserve	10pm to 7am daylight saving and 7pm to 7am outside daylight saving	1/10/2015	CP2015/19977	31/10/2015
Orākei	47	Karaka Bay	10pm to 7am daylight saving and 7pm to 7am outside daylight saving	1/10/2015	CP2015/19977	31/10/2015
Orākei	48	Kelvin Reserve	10pm to 7am daylight saving and 7pm to 7am outside daylight saving	1/10/2015	CP2015/19977	31/10/2015

Local board	Map number	Alcohol ban area	Operative time	Decision date	Decision reference	Commencement date
Orākei	49	Kepa Bush Reserve	10pm to 7am daylight saving and 7pm to 7am outside daylight saving	1/10/2015	CP2015/19977	31/10/2015
Orākei	50	Kitemoana Corner	10pm to 7am daylight saving and 7pm to 7am outside daylight saving	1/10/2015	CP2015/19977	31/10/2015
Orākei	51	Kohimarama Beach Reserve	10pm to 7am daylight saving and 7pm to 7am outside daylight saving	1/10/2015	CP2015/19977	31/10/2015
Orākei	52	Kohimarama Rd Comins Crescent walkway	10pm to 7am daylight saving and 7pm to 7am outside daylight saving	1/10/2015	CP2015/19977	31/10/2015
Orākei	53	Kohimarama Reserve	10pm to 7am daylight saving and 7pm to 7am outside daylight saving	1/10/2015	CP2015/19977	31/10/2015
Orākei	54	Koraha Reserve	10pm to 7am daylight saving and 7pm to 7am outside daylight saving	1/10/2015	CP2015/19977	31/10/2015
Orākei	55	Kupe North Reserve	10pm to 7am daylight saving and 7pm to 7am outside daylight saving	1/10/2015	CP2015/19977	31/10/2015
Orākei	56	Kupe Reserve	10pm to 7am daylight saving and 7pm to 7am outside daylight saving	1/10/2015	CP2015/19977	31/10/2015
Orākei	57	Ladies Bay Beach	10pm to 7am daylight saving and 7pm to 7am outside daylight saving	1/10/2015	CP2015/19977	31/10/2015
Orākei	58	Lava Flow Park	10pm to 7am daylight saving and 7pm to 7am outside daylight saving	1/10/2015	CP2015/19977	31/10/2015
Orākei	59	Lawry Reserve	10pm to 7am daylight saving and 7pm to 7am outside daylight saving	1/10/2015	CP2015/19977	31/10/2015
Orākei	60	Lingarth Reserve	10pm to 7am daylight saving and 7pm to 7am outside daylight saving	1/10/2015	CP2015/19977	31/10/2015
Orākei	61	Liston Park	10pm to 7am daylight saving and 7pm to 7am outside daylight saving	1/10/2015	CP2015/19977	31/10/2015
Orākei	62	Little Rangitoto Reserve	10pm to 7am daylight saving and 7pm to 7am outside daylight saving	1/10/2015	CP2015/19977	31/10/2015
Orākei	63	Long Drive Road Reserve A	10pm to 7am daylight saving and 7pm to 7am outside daylight saving	1/10/2015	CP2015/19977	31/10/2015
Orākei	64	Long Drive Road Reserve B	10pm to 7am daylight saving and 7pm to 7am outside daylight saving	1/10/2015	CP2015/19977	31/10/2015
Orākei	65	Long Drive Road Reserve C	10pm to 7am daylight saving and 7pm to 7am outside daylight saving	1/10/2015	CP2015/19977	31/10/2015

Local board	Map number	Alcohol ban area	Operative time	Decision date	Decision reference	Commencement date
Orākei	66	Long Drive Road Reserve D	10pm to 7am daylight saving and 7pm to 7am outside daylight saving	1/10/2015	CP2015/19977	31/10/2015
Orākei	67	MacPherson Reserve	10pm to 7am daylight saving and 7pm to 7am outside daylight saving	1/10/2015	CP2015/19977	31/10/2015
Orākei	68	Madills Farm Recreation Reserve	10pm to 7am daylight saving and 7pm to 7am outside daylight saving	1/10/2015	CP2015/19977	31/10/2015
Orākei	69	Martyn Wilson Fields & Sonia Reserve	10pm to 7am daylight saving and 7pm to 7am outside daylight saving	1/10/2015	CP2015/19977	31/10/2015
Orākei	70	Mary Atkin Reserve	10pm to 7am daylight saving and 7pm to 7am outside daylight saving	1/10/2015	CP2015/19977	31/10/2015
Orākei	71	Maskell Reserve	10pm to 7am daylight saving and 7pm to 7am outside daylight saving	1/10/2015	CP2015/19977	31/10/2015
Orākei	72	Maungarei Springs Wetland	10pm to 7am daylight saving and 7pm to 7am outside daylight saving	1/10/2015	CP2015/19977	31/10/2015
Orākei	73	Meadowbank Community Centre	10pm to 7am daylight saving and 7pm to 7am outside daylight saving	1/10/2015	CP2015/19977	31/10/2015
Orākei	74	Meadowbank Reserve	10pm to 7am daylight saving and 7pm to 7am outside daylight saving	1/10/2015	CP2015/19977	31/10/2015
Orākei	75	Melanesia Reserve	10pm to 7am daylight saving and 7pm to 7am outside daylight saving	1/10/2015	CP2015/19977	31/10/2015
Orākei	76	Merton Reserve	10pm to 7am daylight saving and 7pm to 7am outside daylight saving	1/10/2015	CP2015/19977	31/10/2015
Orākei	77	Michael Joseph Savage Memorial	10pm to 7am daylight saving and 7pm to 7am outside daylight saving	1/10/2015	CP2015/19977	31/10/2015
Orākei	78	Michael Joseph Savage roundabout	10pm to 7am daylight saving and 7pm to 7am outside daylight saving	1/10/2015	CP2015/19977	31/10/2015
Orākei	79	Michaels Avenue Reserve (sportsgrounds)	10pm to 7am daylight saving and 7pm to 7am outside daylight saving	1/10/2015	CP2015/19977	31/10/2015
Orākei	80	Mission Bay Town Centre	10pm to 7am daylight saving and 7pm to 7am outside daylight saving	1/10/2015	CP2015/19977	31/10/2015
Orākei	81	Morrin Reserve	10pm to 7am daylight saving and 7pm to 7am outside daylight saving	1/10/2015	CP2015/19977	31/10/2015
Orākei	82	Mount Hobson Domain	10pm to 7am daylight saving and 7pm to 7am outside daylight saving	1/10/2015	CP2015/19977	31/10/2015

Local board	Map number	Alcohol ban area	Operative time	Decision date	Decision reference	Commencement date
Orākei	83	Nehu Triangle	10pm to 7am daylight saving and 7pm to 7am outside daylight saving	1/10/2015	CP2015/19977	31/10/2015
Orākei	84	Ngahue Reserve	10pm to 7am daylight saving and 7pm to 7am outside daylight saving	1/10/2015	CP2015/19977	31/10/2015
Orākei	85	Ngaiwi Reserve	10pm to 7am daylight saving and 7pm to 7am outside daylight saving	1/10/2015	CP2015/19977	31/10/2015
Orākei	86	Ngake Walkway	10pm to 7am daylight saving and 7pm to 7am outside daylight saving	1/10/2015	CP2015/19977	31/10/2015
Orākei	87	Ngapipi Cliff Reserve	10pm to 7am daylight saving and 7pm to 7am outside daylight saving	1/10/2015	CP2015/19977	31/10/2015
Orākei	88	Ngapipi Reserve	10pm to 7am daylight saving and 7pm to 7am outside daylight saving	1/10/2015	CP2015/19977	31/10/2015
Orākei	89	Ngapuhi Reserve	10pm to 7am daylight saving and 7pm to 7am outside daylight saving	1/10/2015	CP2015/19977	31/10/2015
Orākei	90	Nihill Reserve	10pm to 7am daylight saving and 7pm to 7am outside daylight saving	1/10/2015	CP2015/19977	31/10/2015
Orākei	91	Norman Lesser Reserve	10pm to 7am daylight saving and 7pm to 7am outside daylight saving	1/10/2015	CP2015/19977	31/10/2015
Orākei	92	NZ Native Park	10pm to 7am daylight saving and 7pm to 7am outside daylight saving	1/10/2015	CP2015/19977	31/10/2015
Orākei	93	Okahu Bay Reserve (Beach area)	10pm to 7am daylight saving and 7pm to 7am outside daylight saving	1/10/2015	CP2015/19977	31/10/2015
Orākei	94	Orākei Basin	10pm to 7am daylight saving and 7pm to 7am outside daylight saving	1/10/2015	CP2015/19977	31/10/2015
Orākei	95	Orākei Community Centre	10pm to 7am daylight saving and 7pm to 7am outside daylight saving	1/10/2015	CP2015/19977	31/10/2015
Orākei	96	Orākei Creek Esplanade Reserve	10pm to 7am daylight saving and 7pm to 7am outside daylight saving	1/10/2015	CP2015/19977	31/10/2015
Orākei	97	Orākei Domain A	10pm to 7am daylight saving and 7pm to 7am outside daylight saving	1/10/2015	CP2015/19977	31/10/2015
Orākei	98	Orākei Domain B	10pm to 7am daylight saving and 7pm to 7am outside daylight saving	1/10/2015	CP2015/19977	31/10/2015
Orākei	99	Orākei Road corner	10pm to 7am daylight saving and 7pm to 7am outside daylight saving	1/10/2015	CP2015/19977	31/10/2015

Local board	Map number	Alcohol ban area	Operative time	Decision date	Decision reference	Commencement date
Orākei	100	Orākei Wharf	10pm to 7am daylight saving and 7pm to 7am outside daylight saving	1/10/2015	CP2015/19977	31/10/2015
Orākei	101	Pamela Place Reserve	10pm to 7am daylight saving and 7pm to 7am outside daylight saving	1/10/2015	CP2015/19977	31/10/2015
Orākei	102	Paritai Reserve	10pm to 7am daylight saving and 7pm to 7am outside daylight saving	1/10/2015	CP2015/19977	31/10/2015
Orākei	103	Patteson Reserve	10pm to 7am daylight saving and 7pm to 7am outside daylight saving	1/10/2015	CP2015/19977	31/10/2015
Orākei	104	Platina Reserve	10pm to 7am daylight saving and 7pm to 7am outside daylight saving	1/10/2015	CP2015/19977	31/10/2015
Orākei	105	Playtime Park	10pm to 7am daylight saving and 7pm to 7am outside daylight saving	1/10/2015	CP2015/19977	31/10/2015
Orākei	106	Portland Reserve	10pm to 7am daylight saving and 7pm to 7am outside daylight saving	1/10/2015	CP2015/19977	31/10/2015
Orākei	107	Regents Park	10pm to 7am daylight saving and 7pm to 7am outside daylight saving	1/10/2015	CP2015/19977	31/10/2015
Orākei	108	Reihana Reserve	10pm to 7am daylight saving and 7pm to 7am outside daylight saving	1/10/2015	CP2015/19977	31/10/2015
Orākei	109	Riddell Road Beach Access	10pm to 7am daylight saving and 7pm to 7am outside daylight saving	1/10/2015	CP2015/19977	31/10/2015
Orākei	110	Roberta Reserve	10pm to 7am daylight saving and 7pm to 7am outside daylight saving	1/10/2015	CP2015/19977	31/10/2015
Orākei	111	Ronaki Reserve	10pm to 7am daylight saving and 7pm to 7am outside daylight saving	1/10/2015	CP2015/19977	31/10/2015
Orākei	112	Ruka Reserve	10pm to 7am daylight saving and 7pm to 7am outside daylight saving	1/10/2015	CP2015/19977	31/10/2015
Orākei	113	Rukutai Reserve	10pm to 7am daylight saving and 7pm to 7am outside daylight saving	1/10/2015	CP2015/19977	31/10/2015
Orākei	114	Rukutai Walkway	10pm to 7am daylight saving and 7pm to 7am outside daylight saving	1/10/2015	CP2015/19977	31/10/2015
Orākei	115	Rutherford Reserve	10pm to 7am daylight saving and 7pm to 7am outside daylight saving	1/10/2015	CP2015/19977	31/10/2015
Orākei	116	Scherff Road Reserve	10pm to 7am daylight saving and 7pm to 7am outside daylight saving	1/10/2015	CP2015/19977	31/10/2015

Local board	Map number	Alcohol ban area	Operative time	Decision date	Decision reference	Commencement date
Orākei	117	Shore Road Reserve East	10pm to 7am daylight saving and 7pm to 7am outside daylight saving	1/10/2015	CP2015/19977	31/10/2015
Orākei	118	Sierra Reserve	10pm to 7am daylight saving and 7pm to 7am outside daylight saving	1/10/2015	CP2015/19977	31/10/2015
Orākei	119	Springcombe Road Corner	10pm to 7am daylight saving and 7pm to 7am outside daylight saving	1/10/2015	CP2015/19977	31/10/2015
Orākei	120	St Heliers Bay Beach Reserve	10pm to 7am daylight saving and 7pm to 7am outside daylight saving	1/10/2015	CP2015/19977	31/10/2015
Orākei	121	St Johns Bush	10pm to 7am daylight saving and 7pm to 7am outside daylight saving	1/10/2015	CP2015/19977	31/10/2015
Orākei	122	Stones Throw Park	10pm to 7am daylight saving and 7pm to 7am outside daylight saving	1/10/2015	CP2015/19977	31/10/2015
Orākei	123	Swainston Reserve	10pm to 7am daylight saving and 7pm to 7am outside daylight saving	1/10/2015	CP2015/19977	31/10/2015
Orākei	124	Tagalad Reserve	10pm to 7am daylight saving and 7pm to 7am outside daylight saving	1/10/2015	CP2015/19977	31/10/2015
Orākei	125	Tahapa Crescent Hall	10pm to 7am daylight saving and 7pm to 7am outside daylight saving	1/10/2015	CP2015/19977	31/10/2015
Orākei	126	Tahapa Reserve	10pm to 7am daylight saving and 7pm to 7am outside daylight saving	1/10/2015	CP2015/19977	31/10/2015
Orākei	127	Tahapa Reserve East	10pm to 7am daylight saving and 7pm to 7am outside daylight saving	1/10/2015	CP2015/19977	31/10/2015
Orākei	128	Tahuna Torea Nature Reserve	10pm to 7am daylight saving and 7pm to 7am outside daylight saving	1/10/2015	CP2015/19977	31/10/2015
Orākei	129	Tamaki Drive (Kelly Tarltons)	10pm to 7am daylight saving and 7pm to 7am outside daylight saving	1/10/2015	CP2015/19977	31/10/2015
Orākei	130	Tamaki Drive (Kohimarama)	10pm to 7am daylight saving and 7pm to 7am outside daylight saving	1/10/2015	CP2015/19977	31/10/2015
Orākei	131	Tamaki Drive (The Landing)	10pm to 7am daylight saving and 7pm to 7am outside daylight saving	1/10/2015	CP2015/19977	31/10/2015
Orākei	132	Tautari Reserve	10pm to 7am daylight saving and 7pm to 7am outside daylight saving	1/10/2015	CP2015/19977	31/10/2015
Orākei	133	Taylors Hill Reserve	10pm to 7am daylight saving and 7pm to 7am outside daylight saving	1/10/2015	CP2015/19977	31/10/2015

Local board	Map number	Alcohol ban area	Operative time	Decision date	Decision reference	Commencement date
Orākei	134	Te Arawa Reserve	10pm to 7am daylight saving and 7pm to 7am outside daylight saving	1/10/2015	CP2015/19977	31/10/2015
Orākei	135	Thatcher Street Reserve	10pm to 7am daylight saving and 7pm to 7am outside daylight saving	1/10/2015	CP2015/19977	31/10/2015
Orākei	136	Thomas Bloodworth Park	10pm to 7am daylight saving and 7pm to 7am outside daylight saving	1/10/2015	CP2015/19977	31/10/2015
Orākei	137	Tonks Reserve	10pm to 7am daylight saving and 7pm to 7am outside daylight saving	1/10/2015	CP2015/19977	31/10/2015
Orākei	138	Vellenoweth Green	10pm to 7am daylight saving and 7pm to 7am outside daylight saving	1/10/2015	CP2015/19977	31/10/2015
Orākei	139	Ventnor Reserve	10pm to 7am daylight saving and 7pm to 7am outside daylight saving	1/10/2015	CP2015/19977	31/10/2015
Orākei	140	Volcano Park	10pm to 7am daylight saving and 7pm to 7am outside daylight saving	1/10/2015	CP2015/19977	31/10/2015
Orākei	141	Waiata Reserve	10pm to 7am daylight saving and 7pm to 7am outside daylight saving	1/10/2015	CP2015/19977	31/10/2015
Orākei	142	Waiatarua Reserve (Remuera)	10pm to 7am daylight saving and 7pm to 7am outside daylight saving	1/10/2015	CP2015/19977	31/10/2015
Orākei	143	Wairua Reserve	10pm to 7am daylight saving and 7pm to 7am outside daylight saving	1/10/2015	CP2015/19977	31/10/2015
Orākei	144	Waitaramoa Reserve	10pm to 7am daylight saving and 7pm to 7am outside daylight saving	1/10/2015	CP2015/19977	31/10/2015
Orākei	145	Watene Reserve	10pm to 7am daylight saving and 7pm to 7am outside daylight saving	1/10/2015	CP2015/19977	31/10/2015
Orākei	146	Wharua Reserve	10pm to 7am daylight saving and 7pm to 7am outside daylight saving	1/10/2015	CP2015/19977	31/10/2015
Orākei	147	Wilson Beach Reserve	10pm to 7am daylight saving and 7pm to 7am outside daylight saving	1/10/2015	CP2015/19977	31/10/2015
Orākei	148	Gollan Road carparks and green space	5pm to 7am daily	17/05/2018	OR/2018/85	17/05/2018
Ōtara-Papatoetoe	1	Allenby Park	24 hours, 7 days a week	19/10/2015	OP/2015/171	31 October 2015
Ōtara-Papatoetoe	2	Aorere Park	24 hours, 7 days a week	17/02/2016	OP/2015/171 & MO/2016/11	31 October 2015
Ōtara-Papatoetoe	3	Caringbah Park	24 hours, 7 days a week	19/10/2015	OP/2015/171	31 October 2015
Ōtara-Papatoetoe	4	Clayton Park	24 hours, 7 days a week	19/10/2015	OP/2015/171	31 October 2015

Local board	Map number	Alcohol ban area	Operative time	Decision date	Decision reference	Commencement date
Ōtara-Papatoetoe	5	Coombe Avenue	24 hours, 7 days a week	19/10/2015	OP/2015/171	31 October 2015
Ōtara-Papatoetoe	6	East Tamaki Reserve	24 hours, 7 days a week	19/10/2015	OP/2015/171	31 October 2015
Ōtara-Papatoetoe	7	Fergusson Oaks Reserve	24 hours, 7 days a week	19/10/2015	OP/2015/171	31 October 2015
Ōtara-Papatoetoe	8	Flinders Park	24 hours, 7 days a week	19/10/2015	OP/2015/171	31 October 2015
Ōtara-Papatoetoe	9	Hamill Reserve	24 hours, 7 days a week	19/10/2015	OP/2015/171	31 October 2015
Ōtara-Papatoetoe	10	Hunters Corner	24 hours, 7 days a week	19/10/2015	OP/2015/171	31 October 2015
Ōtara-Papatoetoe	11	James Watson Park	24 hours, 7 days a week	19/10/2015	OP/2015/171	31 October 2015
Ōtara-Papatoetoe	12	Kimpton Park	24 hours, 7 days a week	19/10/2015	OP/2015/171	31 October 2015
Ōtara-Papatoetoe	13	Kohuora Park, Ledenfield Reserve and Beaufort Reserve	24 hours, 7 days a week	19/10/2015	OP/2015/171	31 October 2015
Ōtara-Papatoetoe	14	Lappington Reserve	24 hours, 7 days a week	19/10/2015	OP/2015/171	31 October 2015
Ōtara-Papatoetoe	15	Manukau Metropolitan Centre	24 hours, 7 days a week	19/10/2015	OP/2015/171 & MR/2016/9	31 October 2015
Ōtara-Papatoetoe	16	Manukau Sports Bowl	24 hours, 7 days a week	19/10/2015	OP/2015/171	31 October 2015
Ōtara-Papatoetoe	17	Middlemore Park	24 hours, 7 days a week	19/10/2015	OP/2015/171	31 October 2015
Ōtara-Papatoetoe	18	Ngati Ōtara Park	24 hours, 7 days a week	19/10/2015	OP/2015/171	31 October 2015
Ōtara-Papatoetoe	19	Ōtara Town Centre	24 hours, 7 days a week	19/10/2015	OP/2015/171	31 October 2015
Ōtara-Papatoetoe	20	Othello Park	24 hours, 7 days a week	19/10/2015	OP/2015/171	31 October 2015
Ōtara-Papatoetoe	21	Papatoetoe Town Centre	24 hours, 7 days a week	19/10/2015	OP/2015/171	31 October 2015
Ōtara-Papatoetoe	22	Rangitoto Park	24 hours, 7 days a week	19/10/2015	OP/2015/171	31 October 2015
Ōtara-Papatoetoe	23	Rongamai Reserve and walkways	24 hours, 7 days a week	19/10/2015	OP/2015/171	31 October 2015
Ōtara-Papatoetoe	24	Sandbrook Reserve	24 hours, 7 days a week	19/10/2015	OP/2015/171	31 October 2015
Ōtara-Papatoetoe	25	Station Road Park and Ride	24 hours, 7 days a week	19/10/2015	OP/2015/171	31 October 2015
Ōtara-Papatoetoe	26	Sunnyside Domain	24 hours, 7 days a week	19/10/2015	OP/2015/171	31 October 2015
Ōtara-Papatoetoe	27	Billington Esplanade Reserve	7pm to 7am daily	19/10/2015	OP/2015/171	31 October 2015
Ōtara-Papatoetoe	28	Clover Park Community House Grounds	7pm to 7am daily	19/10/2015	OP/2015/171	31 October 2015
Ōtara-Papatoetoe	29	Cooper Park (Whitley No2 Reserve)	7pm to 7am daily	19/10/2015	OP/2015/171	31 October 2015
Ōtara-Papatoetoe	30	Crown Park	7pm to 7am daily	19/10/2015	OP/2015/171	31 October 2015
Ōtara-Papatoetoe	31	Farley and Latimer Reserve	7pm to 7am daily	19/10/2015	OP/2015/171	31 October 2015
Ōtara-Papatoetoe	32	Ferndown Park	7pm to 7am daily	19/10/2015	OP/2015/171	31 October 2015
Ōtara-Papatoetoe	33	Great South Rd 570 Grounds	7pm to 7am daily	19/10/2015	OP/2015/171	31 October 2015
Ōtara-Papatoetoe	34	Hillside South Park	7pm to 7am daily	19/10/2015	OP/2015/171	31 October 2015

Local board	Map number	Alcohol ban area	Operative time	Decision date	Decision reference	Commencement date
Ōtara-Papatoetoe	35	Kurt-Elsa Park	7pm to 7am daily	19/10/2015	OP/2015/171	31 October 2015
Ōtara-Papatoetoe	36	Maxwell Park	7pm to 7am daily	19/10/2015	OP/2015/171	31 October 2015
Ōtara-Papatoetoe	37	Milton Park	7pm to 7am daily	19/10/2015	OP/2015/171	31 October 2015
Ōtara-Papatoetoe	38	Motatau Park	7pm to 7am daily	19/10/2015	OP/2015/171	31 October 2015
Ōtara-Papatoetoe	39	Murdoch Park	7pm to 7am daily	19/10/2015	OP/2015/171	31 October 2015
Ōtara-Papatoetoe	40	Pearl Baker Reserve	7pm to 7am daily	19/10/2015	OP/2015/171	31 October 2015
Ōtara-Papatoetoe	41	Puhinui Reserve	7pm to 7am daily	19/10/2015	OP/2015/171	31 October 2015
Ōtara-Papatoetoe	42	Robert White Park	7pm to 7am daily	19/10/2015	OP/2015/171	31 October 2015
Ōtara-Papatoetoe	43	Sikkim Park (Pulman Place Reserve)	7pm to 7am daily	19/10/2015	OP/2015/171	31 October 2015
Papakura	1	Bruce Pulman Park	24 hours, 7 days a week	21/10/2015	PPK/2015/177	31/10/2015
Papakura	2	Central Park Reserve	24 hours, 7 days a week	21/10/2015	PPK/2015/177	31/10/2015
Papakura	3	Children's Forest area and Margan Bush	24 hours, 7 days a week	21/10/2015	PPK/2015/177	31/10/2015
Papakura	4	Clarice Reserve	24 hours, 7 days a week	21/10/2015	PPK/2015/177	31/10/2015
Papakura	5	Drury Domain (including the Drury Hall and Drury Library)	24 hours, 7 days a week	21/10/2015	PPK/2015/177	31/10/2015
Papakura	6	Gatland Road and Papakura South Cemetery	24 hours, 7 days a week	21/10/2015	PPK/2015/177	31/10/2015
Papakura	7	Kirks' Bush, Southern Park and Butterworth Block	24 hours, 7 days a week	21/10/2015	PPK/2015/177	31/10/2015
Papakura	8	Marybeth Reserve	24 hours, 7 days a week	21/10/2015	PPK/2015/177	31/10/2015
Papakura	9	Massey Park	24 hours, 7 days a week	21/10/2015	PPK/2015/177	31/10/2015
Papakura	10	McLennan Park	24 hours, 7 days a week	21/10/2015	PPK/2015/177	31/10/2015
Papakura	11	Papakura Cemetery, Recreation Centre and Chisholm Corner	24 hours, 7 days a week	21/10/2015	PPK/2015/177	31/10/2015
Papakura	12	Papakura Town Centre	24 hours, 7 days a week	21/10/2015 & 28/10/2020	PPK/2015/177 & PPK/2020/170	31/10/2015
Papakura	13	Prince Edward Park	24 hours, 7 days a week	21/10/2015	PPK/2015/177	31/10/2015
Papakura	14	Pukekiwiriki Pa	24 hours, 7 days a week	21/10/2015	PPK/2015/177	31/10/2015
Papakura	15	Ray Small Park	24 hours, 7 days a week	21/10/2015	PPK/2015/177	31/10/2015
Papakura	16	Rollerson Reserve	24 hours, 7 days a week	21/10/2015	PPK/2015/177	31/10/2015
Papakura	17	Takaanini Reserve	24 hours, 7 days a week	21/10/2015	PPK/2015/177	31/10/2015
Papakura	18	Red Hill Scenic Reserve	10pm to 7am daylight saving and 7pm to 7am outside daylight saving	21/10/2015	PPK/2015/177	31/10/2015

Local board	Map number	Alcohol ban area	Operative time	Decision date	Decision reference	Commencement date
Papakura	19	Slippery Creek Reserve	10pm to 7am daylight saving and 7pm to 7am outside daylight saving	21/10/2015	PPK/2015/177	31/10/2015
Puketāpapa	1	Fearon Park	24 hours, 7 days a week	24/09/2015	PKTPP/2015/216	31/10/2015
Puketāpapa	2	Harold Long Reserve	24 hours, 7 days a week	24/09/2015	PKTPP/2015/216	31/10/2015
Puketāpapa	3	Hillsborough Cemetery	24 hours, 7 days a week	24/09/2015	PKTPP/2015/216	31/10/2015
Puketāpapa	4	Hillsborough Reserve	24 hours, 7 days a week	24/09/2015	PKTPP/2015/216	31/10/2015
Puketāpapa	5	Keith Hay Park	24 hours, 7 days a week	24/09/2015	PKTPP/2015/216	31/10/2015
Puketāpapa	6	Lynfield Reserve	24 hours, 7 days a week	24/09/2015	PKTPP/2015/216	31/10/2015
Puketāpapa	7	Mount Roskill Town Centre	24 hours, 7 days a week	24/09/2015	PKTPP/2015/216	31/10/2015
Puketāpapa	8	Three Kings Reserve	24 hours, 7 days a week	24/09/2015	PKTPP/2015/216	31/10/2015
Puketāpapa	9	Underwood Park	24 hours, 7 days a week	24/09/2015	PKTPP/2015/216	31/10/2015
Puketāpapa	10	Wairaki Stream Reserve 1	24 hours, 7 days a week	24/09/2015	PKTPP/2015/216	31/10/2015
Puketāpapa	11	Walmsley Park	24 hours, 7 days a week	24/09/2015	PKTPP/2015/216	31/10/2015
Puketāpapa	12	War Memorial Park (including associated community facilities and car parks)	24 hours, 7 days a week	24/09/2015	PKTPP/2015/216	31/10/2015
Puketāpapa	13	Aldersgate Reserve	7pm to 7am daily	24/09/2015	PKTPP/2015/216	31/10/2015
Puketāpapa	14	Arkles Reserve	7pm to 7am daily	24/09/2015	PKTPP/2015/216	31/10/2015
Puketāpapa	15	Arthur Faulkner Reserve	7pm to 7am daily	24/09/2015	PKTPP/2015/216	31/10/2015
Puketāpapa	16	Arthur S Richards Memorial Park	7pm to 7am daily	24/09/2015	PKTPP/2015/216	31/10/2015
Puketāpapa	17	Bamfield Reserve	7pm to 7am daily	24/09/2015	PKTPP/2015/216	31/10/2015
Puketāpapa	18	Belfast Reserve	7pm to 7am daily	24/09/2015	PKTPP/2015/216	31/10/2015
Puketāpapa	19	Bob Bodt Reserve	7pm to 7am daily	24/09/2015	PKTPP/2015/216	31/10/2015
Puketāpapa	20	Boundary Road Reserve	7pm to 7am daily	24/09/2015	PKTPP/2015/216	31/10/2015
Puketāpapa	21	Buckley Road Reserve	7pm to 7am daily	24/09/2015	PKTPP/2015/216	31/10/2015
Puketāpapa	22	Captains Bush	7pm to 7am daily	24/09/2015	PKTPP/2015/216	31/10/2015
Puketāpapa	23	Eaton Road Reserve	7pm to 7am daily	24/09/2015	PKTPP/2015/216	31/10/2015
Puketāpapa	24	Fernleigh Avenue Reserve	7pm to 7am daily	24/09/2015	PKTPP/2015/216	31/10/2015
Puketāpapa	25	Frederick Street Esplanade Reserve 1	7pm to 7am daily	24/09/2015	PKTPP/2015/216	31/10/2015
Puketāpapa	26	Frederick Street Reserve	7pm to 7am daily	24/09/2015	PKTPP/2015/216	31/10/2015
Puketāpapa	27	Freeland Reserve	7pm to 7am daily	24/09/2015	PKTPP/2015/216	31/10/2015
Puketāpapa	28	Grannys Bay Reserve	7pm to 7am daily	24/09/2015	PKTPP/2015/216	31/10/2015
Puketāpapa	29	Halleys Road Drainage Reserve	7pm to 7am daily	24/09/2015	PKTPP/2015/216	31/10/2015

Local board	Map number	Alcohol ban area	Operative time	Decision date	Decision reference	Commencement date
Puketāpapa	30	Halsey Esplanade Reserve (Part of Manukau Domain)	7pm to 7am daily	24/09/2015	PKTPP/2015/216	31/10/2015
Puketāpapa	31	Halsey Reserve	7pm to 7am daily	24/09/2015	PKTPP/2015/216	31/10/2015
Puketāpapa	32	Haycock Avenue Reserve	7pm to 7am daily	24/09/2015	PKTPP/2015/216	31/10/2015
Puketāpapa	33	Hendry Reserve	7pm to 7am daily	24/09/2015	PKTPP/2015/216	31/10/2015
Puketāpapa	34	Hibiscus Reserve	7pm to 7am daily	24/09/2015	PKTPP/2015/216	31/10/2015
Puketāpapa	35	Hillsborough Park (including associated car park)	7pm to 7am daily	24/09/2015	PKTPP/2015/216	31/10/2015
Puketāpapa	36	Hillsdale Reserve (Part of Captains Bush)	7pm to 7am daily	24/09/2015	PKTPP/2015/216	31/10/2015
Puketāpapa	37	Himalaya Reserve	7pm to 7am daily	24/09/2015	PKTPP/2015/216	31/10/2015
Puketāpapa	38	John Moore Reserve	7pm to 7am daily	24/09/2015	PKTPP/2015/216	31/10/2015
Puketāpapa	39	John Rosser Reserve	7pm to 7am daily	24/09/2015	PKTPP/2015/216	31/10/2015
Puketāpapa	40	Kingswood Reserve (Part of Captains Bush)	7pm to 7am daily	24/09/2015	PKTPP/2015/216	31/10/2015
Puketāpapa	41	Lynfield Cove Reserve	7pm to 7am daily	24/09/2015	PKTPP/2015/216	31/10/2015
Puketāpapa	42	Manukau Domain	7pm to 7am daily	24/09/2015	PKTPP/2015/216	31/10/2015
Puketāpapa	43	Margaret Griffen Park	7pm to 7am daily	24/09/2015	PKTPP/2015/216	31/10/2015
Puketāpapa	44	Molley Green Reserve	7pm to 7am daily	24/09/2015	PKTPP/2015/216	31/10/2015
Puketāpapa	45	Monte Cecilia Park	7pm to 7am daily	24/09/2015	PKTPP/2015/216	31/10/2015
Puketāpapa	46	Mt Albert Reserve	7pm to 7am daily	24/09/2015	PKTPP/2015/216	31/10/2015
Puketāpapa	47	Nash Road walkway (Dominion Rd Extension)	7pm to 7am daily	24/09/2015	PKTPP/2015/216	31/10/2015
Puketāpapa	48	Newsome Park	7pm to 7am daily	24/09/2015	PKTPP/2015/216	31/10/2015
Puketāpapa	49	Nirvana Reserve	7pm to 7am daily	24/09/2015	PKTPP/2015/216	31/10/2015
Puketāpapa	50	Oriana Reserve (including associated car park)	7pm to 7am daily	24/09/2015	PKTPP/2015/216	31/10/2015
Puketāpapa	51	Pallister Reserve	7pm to 7am daily	24/09/2015	PKTPP/2015/216	31/10/2015
Puketāpapa	52	Plantation Reserve	7pm to 7am daily	24/09/2015	PKTPP/2015/216	31/10/2015
Puketāpapa	53	Quona Reserve	7pm to 7am daily	24/09/2015	PKTPP/2015/216	31/10/2015

Local board	Map number	Alcohol ban area	Operative time	Decision date	Decision reference	Commencement date
Puketāpapa	54	Ramelton Reserve	7pm to 7am daily	24/09/2015	PKTPP/2015/216	31/10/2015
Puketāpapa	55	Robinson Reserve	7pm to 7am daily	24/09/2015	PKTPP/2015/216	31/10/2015
Puketāpapa	56	Rose Garden	7pm to 7am daily	24/09/2015	PKTPP/2015/216	31/10/2015
Puketāpapa	57	Rowan Reserve	7pm to 7am daily	24/09/2015	PKTPP/2015/216	31/10/2015
Puketāpapa	58	Seacliffe Road Foreshore Reserve	7pm to 7am daily	1/05/2016	PKTPP/2015/216	31/10/2015
Puketāpapa	59	Seymour Park	7pm to 7am daily	24/09/2015	PKTPP/2015/216	31/10/2015
Puketāpapa	60	Smallfield Reserve	7pm to 7am daily	24/09/2015	PKTPP/2015/216	31/10/2015
Puketāpapa	61	St Andrews Reserve	7pm to 7am daily	24/09/2015	PKTPP/2015/216	31/10/2015
Puketāpapa	62	Stranolar Reserve	7pm to 7am daily	24/09/2015	PKTPP/2015/216	31/10/2015
Puketāpapa	63	Strathnaver Reserve	7pm to 7am daily	24/09/2015	PKTPP/2015/216	31/10/2015
Puketāpapa	64	Sylvania Crescent Esplanade Reserve	7pm to 7am daily	24/09/2015	PKTPP/2015/216	31/10/2015
Puketāpapa	65	Taylor's Bay Road Reserve	7pm to 7am daily	24/09/2015	PKTPP/2015/216	31/10/2015
Puketāpapa	66	The Avenue Reserve	7pm to 7am daily	24/09/2015	PKTPP/2015/216	31/10/2015
Puketāpapa	67	Turner Reserve	7pm to 7am daily	24/09/2015	PKTPP/2015/216	31/10/2015
Puketāpapa	68	Vagus Reserve	7pm to 7am daily	24/09/2015	PKTPP/2015/216	31/10/2015
Puketāpapa	69	Waikowhai Park	7pm to 7am daily	24/09/2015	PKTPP/2015/216	31/10/2015
Puketāpapa	70	Wairaki Stream Reserve 2	7pm to 7am daily	24/09/2015	PKTPP/2015/216	31/10/2015
Puketāpapa	71	Wattle Bay	7pm to 7am daily	24/09/2015	PKTPP/2015/216	31/10/2015
Puketāpapa	72	Wesley Bay Glade	7pm to 7am daily	24/09/2015	PKTPP/2015/216	31/10/2015
Puketāpapa	73	Wesley Reserve	7pm to 7am daily	24/09/2015	PKTPP/2015/216	31/10/2015
Puketāpapa	74	West Reserve	7pm to 7am daily	24/09/2015	PKTPP/2015/216	31/10/2015
Puketāpapa	75	White Bluff Reserve	7pm to 7am daily	24/09/2015	PKTPP/2015/216	31/10/2015
Puketāpapa	76	Wilson Corner Reserve	7pm to 7am daily	24/09/2015	PKTPP/2015/216	31/10/2015
Puketāpapa (made by Regulatory and Bylaws Committee)	6	Pukewīwi/Puketāpapa (Mt Roskill) (Winstone Park)	10pm to 7am daylight saving and 7pm to 7am outside daylight saving	13/10/2015	RBC/2015/41	31/10/2015
Rodney	1	Old Cement Works and Wilson Road, Warkworth	24 hours, 7 days a week	18/05/2015	RD/2015/60	31/10/2015
Rodney	2	Wellsford Centennial Park	24 hours, 7 days a week	18/05/2015	RD/2015/60	31/10/2015
Rodney	3	Wellsford Central Business District	24 hours, 7 days a week	18/05/2015	RD/2015/60	31/10/2015

Local board	Map number	Alcohol ban area	Operative time	Decision date	Decision reference	Commencement date
Rodney	4	Helensville Central Business District	3pm to 7am daily	18/05/2015	RD/2015/60	31/10/2015
Rodney	5	Parakai	3pm to 7am daily	20/07/2015	RD/2015/93	31/10/2015
Rodney	6	Warkworth Town Centre	3pm to 7am daily	18/05/2015	RD/2015/60	31/10/2015
Rodney	7	Lake Tomarata	7pm to 7am daily	18/05/2015	RD/2015/60	31/10/2015
Rodney	8	Muriwai	7pm to 7am daily	18/05/2015	RD/2015/60	31/10/2015
Rodney	9	Te Arai Point	7pm to 7am daily	18/05/2015	RD/2015/60	31/10/2015
Rodney	10	Omaha	7pm to 7am daily, daylight saving only	18/05/2015	RD/2015/60	31/10/2015
Rodney	11	Algies Bay	9pm to 7am daily, daylight saving only	18/05/2015	RD/2015/60	31/10/2015
Rodney	12	Snells Beach	9pm to 7am daily, daylight saving only	18/05/2015	RD/2015/60	31/10/2015
Rodney	13	Annual Kowhai Festival, Warkworth	At all hours of the day on the market days of the annual Kowhai Festival each year	18/05/2015	RD/2015/60	31/10/2015
Rodney	14A	Baddeleys Beach, Millon Bay	24 hours, 7 days a week	21/06/2018	RD/2018/73	21/06/2018
Rodney	14B	Campbells Beach, Millon Bay	24 hours, 7 days a week	21/06/2018	RD/2018/73	21/06/2018
Upper Harbour	1	Albany Park and Ride Bus Station	24 hours, 7 days a week	12/05/2015	UH/2015/44	31/10/2015
Upper Harbour	2	Constellation Park and Ride Bus Station	24 hours, 7 days a week	12/05/2015	UH/2015/44	31/10/2015
Upper Harbour	3	Bushlands Park Drive	7pm to 7am daily	12/05/2015	UH/2015/44	31/10/2015
Upper Harbour	4	Public area adjacent to Herald Island Wharf	7pm to 7am daily	12/05/2015	UH/2015/44	31/10/2015
Upper Harbour	5	Albany Centre	10pm to 7am daylight saving and 7pm to 7am outside daylight saving	12/05/2015	UH/2015/44	31/10/2015
Upper Harbour	6	Kell Park	10pm to 7am daylight saving and 7pm to 7am outside daylight saving	12/05/2015	UH/2015/44	31/10/2015
Waiheke	1	Oneroa Town Centre	24 hours, 7 days a week	24/09/2015	WHK/2015/33	31/10/2015
Waiheke	2	Miami Avenue car park	24 hours, 7 days a week	24/09/2015	WHK/2015/33	31/10/2015
Waiheke	3	131-133 Ocean View Road, Oneroa	10pm to 7am daylight saving and 7pm to 7am outside daylight saving	24/09/2015	WHK/2015/33	31/10/2015
Waiheke	4	Anzac Reserve - Waiheke Island	10pm to 7am daylight saving and 7pm to 7am outside daylight saving	24/09/2015	WHK/2015/33	31/10/2015

Local board	Map number	Alcohol ban area	Operative time	Decision date	Decision reference	Commencement date
Waiheke	5	Belle Terrace Foreshore Reserve	10pm to 7am daylight saving and 7pm to 7am outside daylight saving	24/09/2015	WHK/2015/33	31/10/2015
Waiheke	6	Burrell Ocean View Walkway	10pm to 7am daylight saving and 7pm to 7am outside daylight saving	24/09/2015	WHK/2015/33	31/10/2015
Waiheke	7	Citrus Corner	10pm to 7am daylight saving and 7pm to 7am outside daylight saving	24/09/2015	WHK/2015/33	31/10/2015
Waiheke	8	Garratt Road Access way	10pm to 7am daylight saving and 7pm to 7am outside daylight saving	24/09/2015	WHK/2015/33	31/10/2015
Waiheke	9	Homersham Reserve	10pm to 7am daylight saving and 7pm to 7am outside daylight saving	24/09/2015	WHK/2015/33	31/10/2015
Waiheke	10	Matapana Reserve	10pm to 7am daylight saving and 7pm to 7am outside daylight saving	24/09/2015	WHK/2015/33	31/10/2015
Waiheke	11	Oneroa Beach	10pm to 7am daylight saving and 7pm to 7am outside daylight saving	24/09/2015	WHK/2015/33	31/10/2015
Waiheke	12	Onetangi Beach Strand	10pm to 7am daylight saving and 7pm to 7am outside daylight saving	24/09/2015	WHK/2015/33	31/10/2015
Waiheke	13	Onetangi Sports Park	10pm to 7am daylight saving and 7pm to 7am outside daylight saving	24/09/2015	WHK/2015/33	31/10/2015
Waiheke	14	Palm Beach Reserve	10pm to 7am daylight saving and 7pm to 7am outside daylight saving	24/09/2015	WHK/2015/33	31/10/2015
Waiheke	15	Te Huruhi Bay Reserve	10pm to 7am daylight saving and 7pm to 7am outside daylight saving	24/09/2015	WHK/2015/33	31/10/2015
Waiheke	16	Third Reserve	10pm to 7am daylight saving and 7pm to 7am outside daylight saving	24/09/2015	WHK/2015/33	31/10/2015
Waiheke	17	Tin Boat Reserve	10pm to 7am daylight saving and 7pm to 7am outside daylight saving	24/09/2015	WHK/2015/33	31/10/2015
Waitakere Ranges	1	Glen Eden Town Centre	24 hours, 7 days a week	14/05/2015	WTK/2015/72	31/10/2015
Waitakere Ranges	2	Titirangi Town Centre	24 hours, 7 days a week	14/05/2015	WTK/2015/72	31/10/2015
Waitakere Ranges	3	Waikumete Cemetery	24 hours, 7 days a week	14/05/2015	WTK/2015/72	31/10/2015
Waitakere Ranges	4	Ceramco Park	7pm to 7am daily	14/05/2015	WTK/2015/72	31/10/2015
Waitakere Ranges	5	Glen Eden Picnic Area	7pm to 7am daily	14/05/2015	WTK/2015/72	31/10/2015
Waitakere Ranges	6	Harold Moody Park	7pm to 7am daily	14/05/2015	WTK/2015/72	31/10/2015
Waitakere Ranges	7	Kaurilands Domain	7pm to 7am daily	14/05/2015	WTK/2015/72	31/10/2015
Waitakere Ranges	8	Otitori Bay (French Bay)	7pm to 7am daily	14/05/2015	WTK/2015/72	31/10/2015
Waitakere Ranges	9	Parrs Park	7pm to 7am daily	14/05/2015	WTK/2015/72	31/10/2015

Local board	Map number	Alcohol ban area	Operative time	Decision date	Decision reference	Commencement date
Waitakere Ranges	10	Titirangi Beach	7pm to 7am daily	14/05/2015	WTK/2015/72	31/10/2015
Waitakere Ranges	11	Piha	Holiday (7pm to 7am daily from Friday of Labour Weekend to Tuesday after Easter)	14/05/2015	WTK/2015/72	31/10/2015
Waitematā	1	City Centre	24 hours, 7 days a week	8/09/2015	WTM/2015/139	31/10/2015
Waitematā	2	Grey Lynn Town Centre	24 hours, 7 days a week	8/09/2015	WTM/2015/139	31/10/2015
Waitematā	3	Newmarket Town Centre	24 hours, 7 days a week	8/09/2015	WTM/2015/139	31/10/2015
Waitematā	4	Newton Town Centre	24 hours, 7 days a week	8/09/2015	WTM/2015/139	31/10/2015
Waitematā	5	Parnell Town Centre	24 hours, 7 days a week	8/09/2015	WTM/2015/139	31/10/2015
Waitematā	6	Ponsonby Town Centre	24 hours, 7 days a week	8/09/2015	WTM/2015/139	31/10/2015
Waitematā	7	Basque Park	10pm to 7am daylight saving and 7pm to 7am outside daylight saving	8/09/2015	WTM/2015/139	31/10/2015
Waitematā	8	Bayfield Park	10pm to 7am daylight saving and 7pm to 7am outside daylight saving	8/09/2015	WTM/2015/139	31/10/2015
Waitematā	9	Costley Reserve	10pm to 7am daylight saving and 7pm to 7am outside daylight saving	8/09/2015	WTM/2015/139	31/10/2015
Waitematā	10	Coxs Bay Esplanade	10pm to 7am daylight saving and 7pm to 7am outside daylight saving	8/09/2015	WTM/2015/139	31/10/2015
Waitematā	11	Coxs Bay Reserve	10pm to 7am daylight saving and 7pm to 7am outside daylight saving	8/09/2015	WTM/2015/139	31/10/2015
Waitematā	12	Cremorne Road Reserve and car park	10pm to 7am daylight saving and 7pm to 7am outside daylight saving	8/09/2015	WTM/2015/139	31/10/2015
Waitematā	13	Dove Myer Robinson Park	10pm to 7am daylight saving and 7pm to 7am outside daylight saving	8/09/2015	WTM/2015/139	31/10/2015
Waitematā	14	England Reserve	10pm to 7am daylight saving and 7pm to 7am outside daylight saving	8/09/2015	WTM/2015/139	31/10/2015
Waitematā	15	Fraser Park	10pm to 7am daylight saving and 7pm to 7am outside daylight saving	8/09/2015	WTM/2015/139	31/10/2015
Waitematā	16	Freemans Bay Community Centre	10pm to 7am daylight saving and 7pm to 7am outside daylight saving	8/09/2015	WTM/2015/139	31/10/2015
Waitematā	17	Grey Lynn Park	10pm to 7am daylight saving and 7pm to 7am outside daylight saving	8/09/2015	WTM/2015/139	31/10/2015
Waitematā	18	Gwilliam Place Reserves	10pm to 7am daylight saving and 7pm to 7am outside daylight saving	8/09/2015	WTM/2015/139	31/10/2015

Local board	Map number	Alcohol ban area	Operative time	Decision date	Decision reference	Commencement date
Waitematā	19	Harry Dansey Park	10pm to 7am daylight saving and 7pm to 7am outside daylight saving	8/09/2015	WTM/2015/139	31/10/2015
Waitematā	20	Home Bay Beach Reserve	10pm to 7am daylight saving and 7pm to 7am outside daylight saving	8/09/2015	WTM/2015/139	31/10/2015
Waitematā	21	Ireland Reserve	10pm to 7am daylight saving and 7pm to 7am outside daylight saving	8/09/2015	WTM/2015/139	31/10/2015
Waitematā	22	Jacobs Ladder and St Marys Bay Walkway	10pm to 7am daylight saving and 7pm to 7am outside daylight saving	8/09/2015	WTM/2015/139	31/10/2015
Waitematā	23	Judges Bay Reserve	10pm to 7am daylight saving and 7pm to 7am outside daylight saving	8/09/2015	WTM/2015/139	31/10/2015
Waitematā	24	Leys Institute, Community Library and Hall	10pm to 7am daylight saving and 7pm to 7am outside daylight saving	8/09/2015	WTM/2015/139	31/10/2015
Waitematā	25	Middle Reserve	10pm to 7am daylight saving and 7pm to 7am outside daylight saving	8/09/2015	WTM/2015/139	31/10/2015
Waitematā	26	Newmarket Park	10pm to 7am daylight saving and 7pm to 7am outside daylight saving	8/09/2015	WTM/2015/139	31/10/2015
Waitematā	27	Norfolk Reserve	10pm to 7am daylight saving and 7pm to 7am outside daylight saving	8/09/2015	WTM/2015/139	31/10/2015
Waitematā	28	Old Mill Reserve	10pm to 7am daylight saving and 7pm to 7am outside daylight saving	8/09/2015	WTM/2015/139	31/10/2015
Waitematā	29	Outhwaite Park	10pm to 7am daylight saving and 7pm to 7am outside daylight saving	8/09/2015	WTM/2015/139	31/10/2015
Waitematā	30	Pt Erin Park	10pm to 7am daylight saving and 7pm to 7am outside daylight saving	8/09/2015	WTM/2015/139	31/10/2015
Waitematā	31	Renall Reserve	10pm to 7am daylight saving and 7pm to 7am outside daylight saving	8/09/2015	WTM/2015/139	31/10/2015
Waitematā	32	Ryle Reserve	10pm to 7am daylight saving and 7pm to 7am outside daylight saving	8/09/2015	WTM/2015/139	31/10/2015
Waitematā	33	Salisbury Reserve	10pm to 7am daylight saving and 7pm to 7am outside daylight saving	8/09/2015	WTM/2015/139	31/10/2015
Waitematā	34	Selby Square	10pm to 7am daylight saving and 7pm to 7am outside daylight saving	8/09/2015	WTM/2015/139	31/10/2015
Waitematā	35	Sentinel Road Reserve	10pm to 7am daylight saving and 7pm to 7am outside daylight saving	8/09/2015	WTM/2015/139	31/10/2015

Local board	Map number	Alcohol ban area	Operative time	Decision date	Decision reference	Commencement date
Waitematā	36	St Marys Reserve	10pm to 7am daylight saving and 7pm to 7am outside daylight saving	8/09/2015	WTM/2015/139	31/10/2015
Waitematā	37	St Stephens & Cemetery	10pm to 7am daylight saving and 7pm to 7am outside daylight saving	8/09/2015	WTM/2015/139	31/10/2015
Waitematā	38	Streetscape gardens on Wellington Street	10pm to 7am daylight saving and 7pm to 7am outside daylight saving	8/09/2015	WTM/2015/139	31/10/2015
Waitematā	39	Teal Park and car park	10pm to 7am daylight saving and 7pm to 7am outside daylight saving	8/09/2015	WTM/2015/139	31/10/2015
Waitematā	40	Tole Reserve	10pm to 7am daylight saving and 7pm to 7am outside daylight saving	8/09/2015	WTM/2015/139	31/10/2015
Waitematā	41	Wairangi Road Reserve	10pm to 7am daylight saving and 7pm to 7am outside daylight saving	8/09/2015	WTM/2015/139	31/10/2015
Waitematā	42	Wellington Street Reserve	10pm to 7am daylight saving and 7pm to 7am outside daylight saving	8/09/2015	WTM/2015/139	31/10/2015
Waitematā	43	Western Park	10pm to 7am daylight saving and 7pm to 7am outside daylight saving	8/09/2015	WTM/2015/139	31/10/2015
Waitematā	44	Western Springs Lakeside	10pm to 7am daylight saving and 7pm to 7am outside daylight saving	8/09/2015	WTM/2015/139	31/10/2015
Waitematā	45	Vermont Reserve	10pm to 7am daylight saving and 7pm to 7am outside daylight saving	8/09/2015	WTM/2015/139	31/10/2015
Waitematā	Regional 2	Auckland Domain (Park, sportsfields, car park and roads within the Domain)	10pm to 7am daylight saving and 7pm to 7am outside daylight saving	13/10/2015	RBC/2015/41 & WTM/2016/110	31/10/2015
Waitematā	Regional 3	Auckland Zoological Park (including associated car park)	10pm to 7am daylight saving and 7pm to 7am outside daylight saving	13/10/2015	RBC/2015/41	31/10/2015
Waitematā	Regional 7	Auckland Domain (Auckland Domain, car park areas, sportsfields and surrounding streets)	Second weekend of each December from 4.00pm of the Friday before the event (rehearsal day) to 8:00am on the following Monday (to incorporate a contingency day in the event of bad weather on the Saturday) event ban for Christmas in the Park.	13/10/2015	RBC/2015/41 & WTM/2016/110	31/10/2015

Local board	Map number	Alcohol ban area	Operative time	Decision date	Decision reference	Commencement date
Waitematā	ADC 1	Auckland Domain (Auckland Domain, car park areas, sports fields and internal roads)	For annual Auckland Lantern Festival events, from 7am on the first day of the event until 7am on the day after the event.	30/11/2017	ADC/2017/43	30/11/2017 (adopted for 5 years, expires after the 2022 event)
Whau	1	Archibald Park	24 hours, 7 days a week	16/9/2015	WH/2015/19	31/10/2015
Whau	2	Avondale Town Centre	24 hours, 7 days a week	16/9/2015	WH/2015/19	31/10/2015
Whau	3	Blockhouse Bay Town Centre	24 hours, 7 days a week	16/9/2015	WH/2015/19	31/10/2015
Whau	4	Chalmers Reserve	24 hours, 7 days a week	16/9/2015	WH/2015/19	31/10/2015
Whau	5	Green Bay Town Centre	24 hours, 7 days a week	16/9/2015	WH/2015/19	31/10/2015
Whau	6	Ken Maunder Park	24 hours, 7 days a week	16/9/2015	WH/2015/19	31/10/2015
Whau	7	New Lynn Town Centre	24 hours, 7 days a week	16/9/2015	WH/2015/19	31/10/2015
Whau	8	Rosebank Town Centre	24 hours, 7 days a week	16/9/2015	WH/2015/19	31/10/2015
Whau	9	Lawson Park	7pm to 7am daily	16/9/2015	WH/2015/19	31/10/2015
Whau	10	New Windsor Reserve	7pm to 7am daily	16/9/2015	WH/2015/19	31/10/2015
Whau	11	Northall Park	7pm to 7am daily	16/9/2015	WH/2015/19	31/10/2015
Whau	12	Riversdale Reserve	7pm to 7am daily	16/9/2015	WH/2015/19	31/10/2015
Whau	13	Avondale West Reserve	10pm to 7am daylight saving and 7pm to 7am outside daylight saving	16/9/2015	WH/2015/19	31/10/2015
Whau	14	Blockhouse Bay Beach Reserve	10pm to 7am daylight saving and 7pm to 7am outside daylight saving	16/9/2015	WH/2015/19 & WH/2020/22	31/10/2015
Whau	15	Eastdale Reserve	10pm to 7am daylight saving and 7pm to 7am outside daylight saving	16/9/2015	WH/2015/19	31/10/2015