

Shoreline
Adaptation Plans

Āwhitu

Community Objectives for
Consultation

February 2023



Contents

Āwhitu Community Objectives	2
Āwhitu Community Engagement Overview.....	2
Feedback.....	3
How will Community Objectives be used?.....	5
Informing Adaptation Strategies	5
Next steps & key dates	6

Āwhitu Community Objectives

Preservation of natural environment:

1. Adaptation strategies preserve and enhance the natural environment and ecosystems that support biodiversity, whilst protecting vulnerable flora/ fauna from adverse activities that damage these delicate systems

Connectivity and access

2. Open space areas provide for and maintain suitable paragliding and hang-gliding take-off and landing places

3. All tide access to the beach, coast and harbour is maintained to enable a range of recreational and water-based activities (e.g. swimming, paragliding, hang- gliding, walking, picnicking, sailing/boating, kiteboarding and surfing)

Asset resilience

4. Resilience of community facilities and assets in hazard zones is a priority

5. Community facilities in the Āwhitu area support community resilience and recovery

Management and maintenance of coastal spaces

6. Pedestrian safety and use of public coastal walkways and lookouts is supported by improvements to signage and maintenance of coastal spaces

Transport considerations

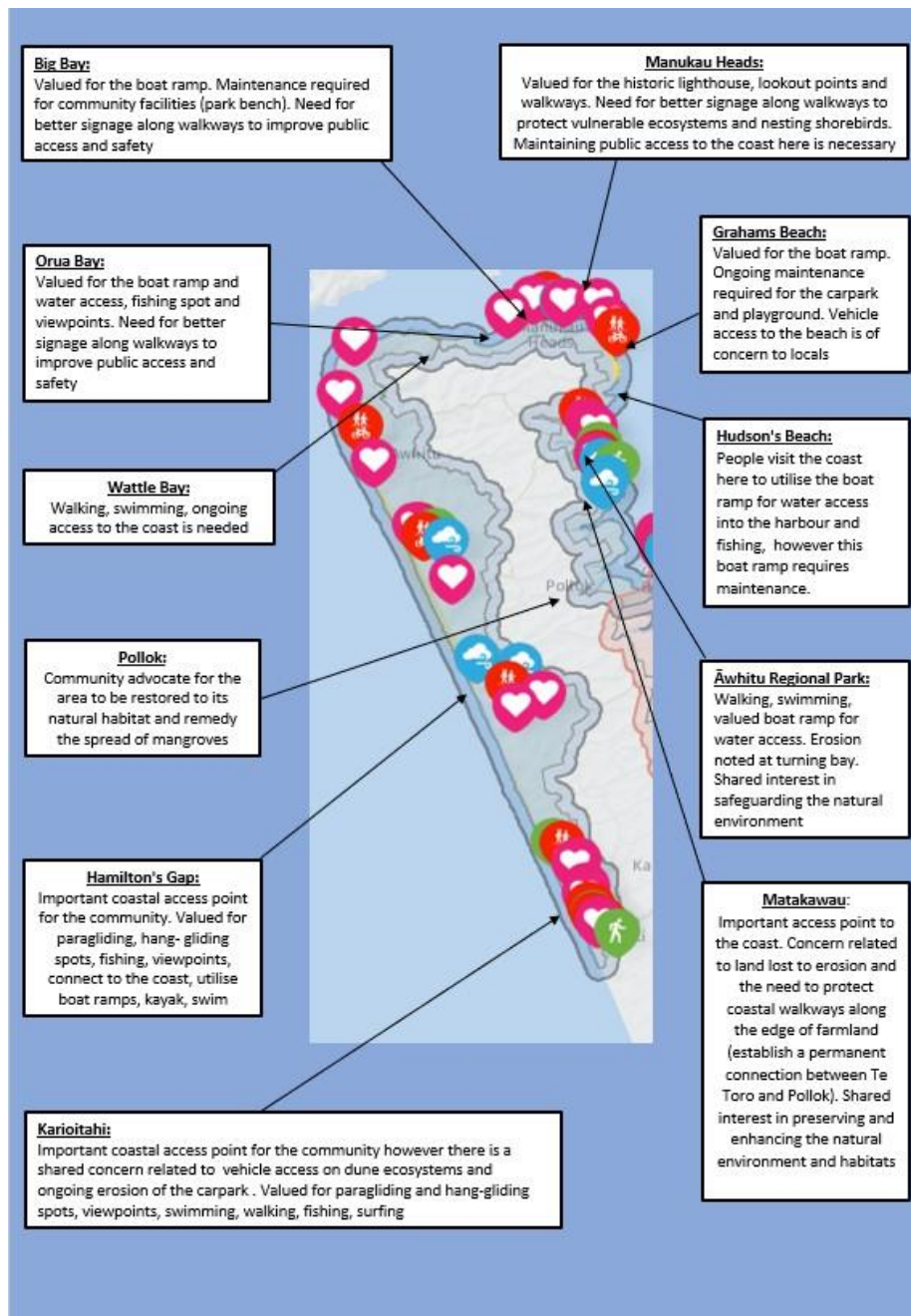
7. A resilient road network supports and maintains access for a diverse range of transport types (i.e., bikes, vehicles) to and along the coastal environment (improve/ support connectivity between coastal spaces).

Āwhitu Community Engagement Overview

The first round of public consultation on this project finished on the 14th October 2022, running for approximately three months. During this time three in person community engagement events hosted in Pollok, Grahams Beach and Waiuku took place. Close to 350 individuals provided feedback on what they value about the Manukau South and Āwhitu coastlines and how they utilize these coastal areas.

Submissions included:

- 145 comments left on our interactive digital Social Pinpoint map
- 114 surveys via Social Pinpoint and AK Have Your Say
- 5 emails with detailed coastal management recommendations and feedback



Feedback

All feedback was collated and sorted into the following major categories (Figure 1).

- Active recreation - how people utilise the coastal areas and provided amenities
- Passive recreation - how people connect to and enjoy the coast and reserve areas
- Environmental – concerns related to the care and protection of the natural environment
- Transport- concerns related to roading networks across the Manukau South and Awhitu Coastline
- Heritage, History and Community- comments related to the cultural and historic significance of the coast, along with those detailing the importance of the coast the community.
- Community memory- coastal hazards and/ or storm events that the local community remember, along with changes to the coastline over time.

- Coastal engineering and assets – values and concerns related to coastal engineering and assets (wharfs, seawalls etc.)
- Management and maintenance issues- management and maintenance concerns the community has for the coastline and its assets and facilities.

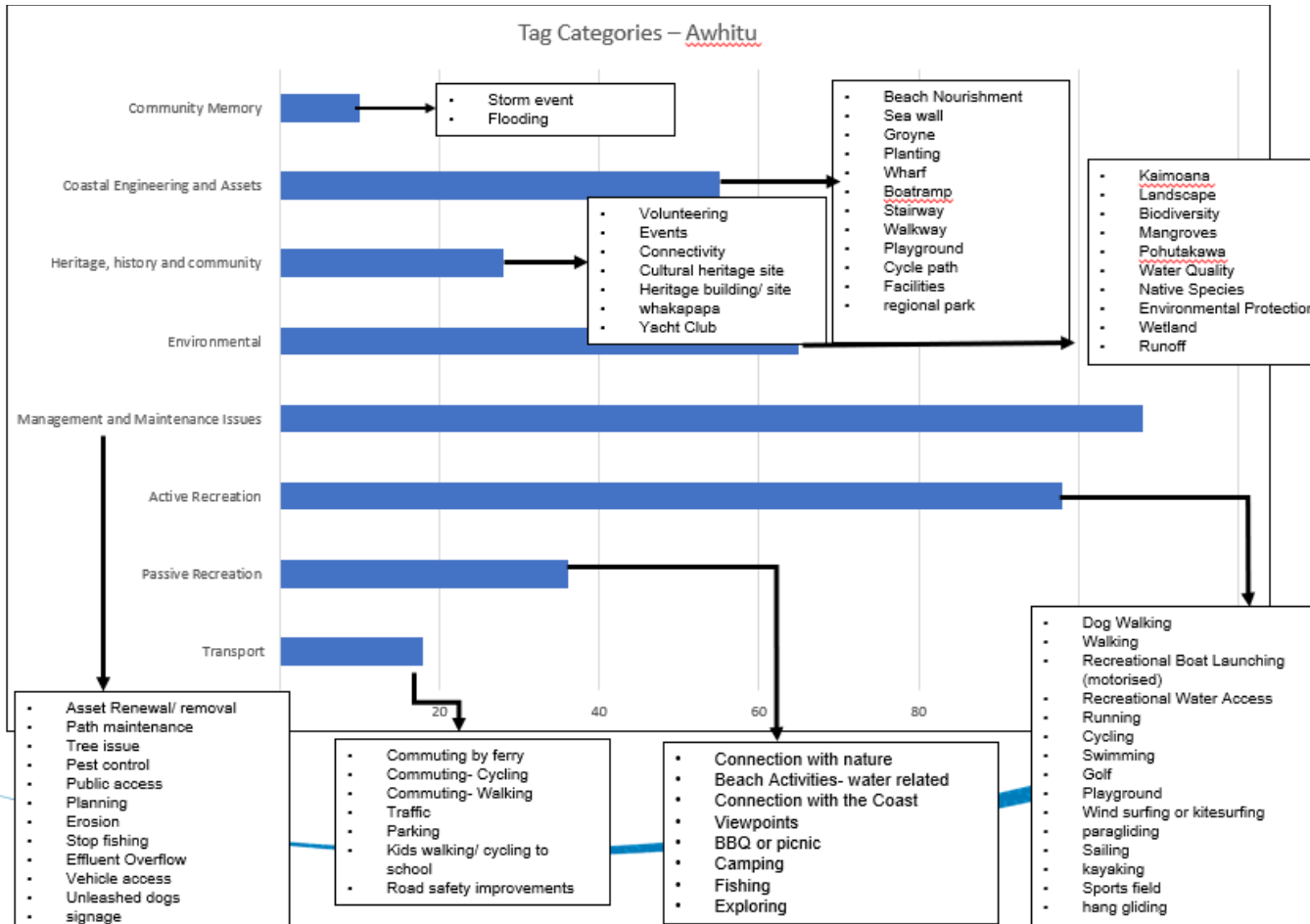


Figure 1: Break down of the number of times each high-level topic was tagged based on community comments and a summary of the results for Awhitu .

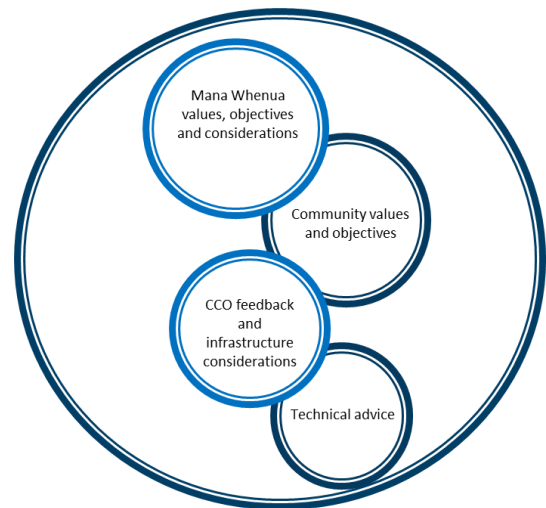
How will Community Objectives be used?

Informing Adaptation Strategies

To help us develop strategies to manage the Āwhitu coastline, we use:

- coastal hazard data
- climate change forecasts
- values from mana whenua
- input from infrastructure providers
- input from the local community

Through this process, we aim to identify and document the best options for managing our coastal areas over the next century.



Adaptation strategies are recommended across the short (0-20 years), medium (20-60 years), and long (60+ years) timeframes. However, when dealing with climate change impacts, it is important to note that the timing of when a change in strategy is required can be uncertain. While specific signals and triggers are not identified in this plan, we have endeavoured to provide high-level indications of potential impacts that would lead to a change in strategy. Four major adaptation strategies to set long term management approaches are considered which are outlined below:

- **No Active Intervention (NAI):**

Natural processes are allowed to continue. This includes no investment in the provision or maintenance of any defences. This strategy is automatically selected for areas of the coastline that are not owned by Auckland Council.



- **Limited Intervention (LI):** Limited works are undertaken to extend the existing asset life or to ensure assets remain safe, including localised realignment of individual assets. This approach acknowledges that the coastline's position will not be fixed into the future and may include small-scale, nature-based measures (e.g. dune planting) to support the coastline's resilience.



- **Hold the Line (HTL):** The coastal edge is fixed at a certain location, using nature-based options (e.g. beach nourishment) or hard structures (e.g. sea walls). Nature-based options are the preferred method where possible.



- **Managed Retreat (MR):** Assets and activities are moved away from hazard-prone areas in a controlled way over time. Managed Retreat allows greater space for natural buffers and reduces asset exposure to natural hazards.



Next steps & key dates

Once the community objectives are confirmed the team will evaluate adaptation strategies and options and write these findings into the body of the Manukau South Shoreline Adaptation Plan report.

Once the report is finalised, it will go to the Franklin Local Board for endorsement in April. A copy of the complete report will be sent to everyone who participated in this project via providing feedback. Additionally, the final outcomes of the consultation and the report will be available on the AK Have Your Say webpage.

If you have any questions or concerns regarding the community objectives for Manukau South and/ or Āwhitu please email the team at shorelineadaptationplans@aucklandcouncil.govt.nz

